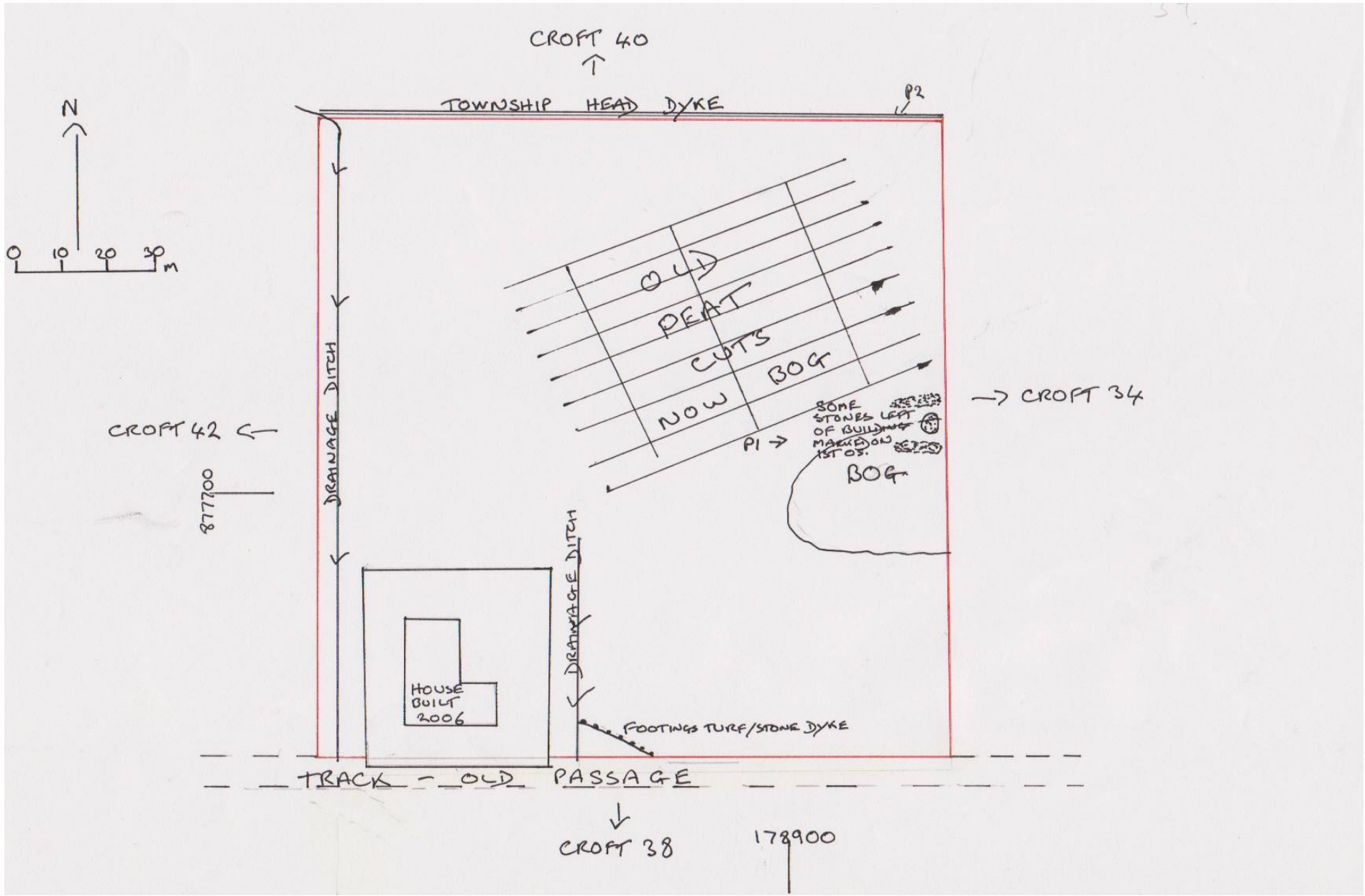


CROFT 39 LONEMORE CROFTING TOWNSHIP.



CROFT 39 LONEMORE TOWNSHIP.

There is little left on croft 39 apart from bog made worse by the old peat cuts which cover about a third of the 4.5 acre croft.

The buildings shown on the first and second edition OS have disappeared under a newly built house constructed in 2006.

The smaller building shown on the E edge of the croft are now visible only as jumbled stones due to the peat cuts.(Picture 1)

To the S of the croft runs a passage which has been encroached upon by the new build garden. To the N of the croft runs the township head dyke, and old gateposts show there was once an entrance onto croft 40.(picture 2)



Picture one showing jumbled stones disturbed by peat cuts.



Picture two, the old gateposts on the head dyke between crofts 39 and 40.