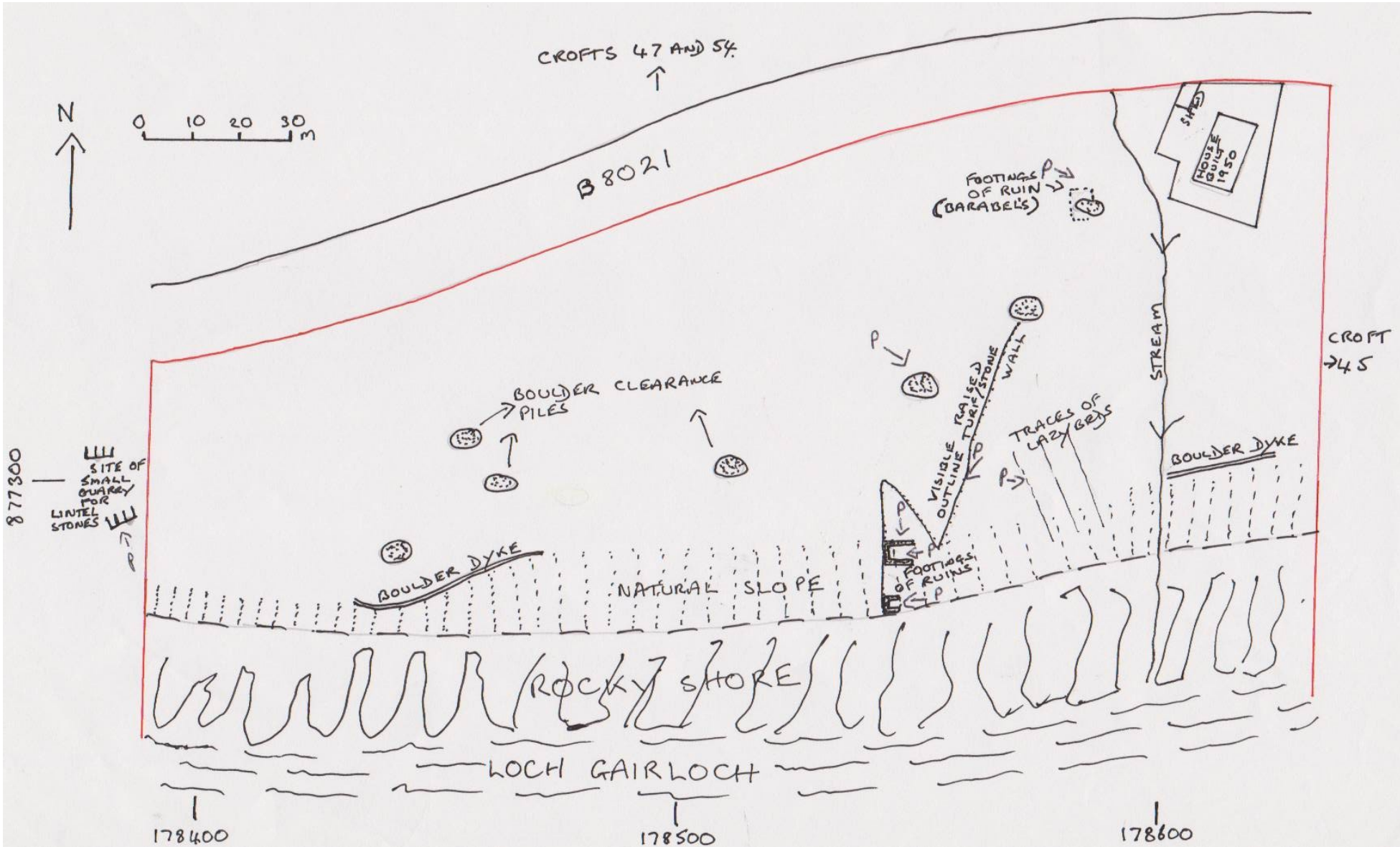


CROFT 46 LONEMORE CROFTING TOWNSHIP.



CROFT 46 LONEMORE TOWNSHIP.

Croft 46 is shown as 5.75 acres according to the estate map. It was known as “Poor Mans’s Croft” due to the quality of the ground, and today is used for grazing livestock. Although there are signs of former arable cultivation as old lazy beds (see plan)

On the croft are the remains of boulder dykes and the footings of older turf and stone walls (see plan)

TRACES OF LAZY
BEDS



FOOTINGS OF TURF AND STONE
WALLS

Scattered over the croft are large piles of big boulders as marked on plan. These were exposed when the new sewage pipeline was installed and the present crofter piled them up to create shelter for sheep from the strong prevailing winds that sweep up the sealoch.

Just outside the E boundary of the croft is evidence of the small quarry known to have existed where the large lintel stones found in some of the ruins were cut (78370 77300)

CROFT 46 LONEMORE TOWNSHIP



SHEEP SHELTER

OLD QUARRY WHERE LINTEL STONES
WERE CUT



The first and second OS maps show two roofed and one unroofed building.

The two buildings down at the shoreline are now ruinous (see pictures) but can be measured at 6x4m and 4x3m. Their original function is unknown.

The building at 78350 77480 was known to be a house. It is shown as having an enclosure on the first OS and an unroofed shed/byre on the second OS. It was known as Barabell's house after Annabel who lived there latterly, was converted into a museum for a short period in the 1970's, and was finally demolished to provide the foundations for the modern house built in 1950 (see plan). All that can be seen today are some footings at the edge of a shelter pile ,(see picture) but a picture of the original house shows its construction.

The B8021 runs along the N boundary of the croft.

CROFT 46 LONEMORE TOWNSHIP.



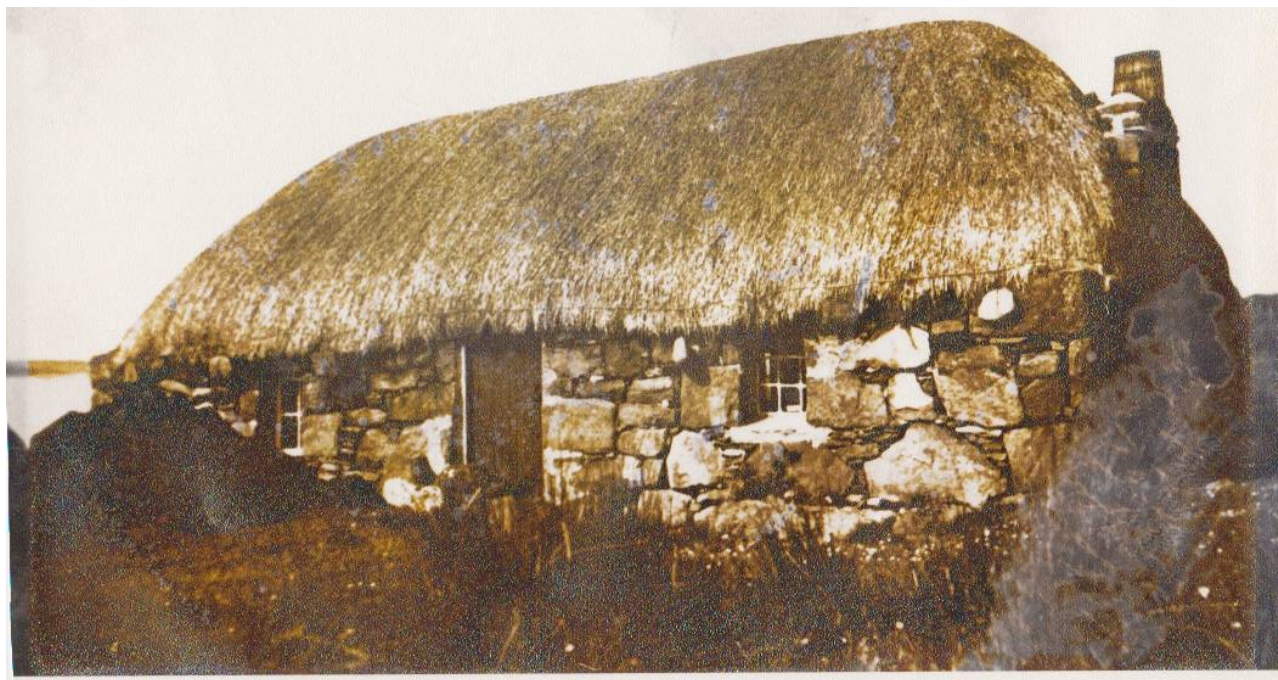
RUINS BY THE SHORE

UPPER RUIN



LOWER RUIN

CROFT 46 LONEMORE TOWNSHIP



BARABELS HOUSE



THE FOOTINGS THAT REMAIN