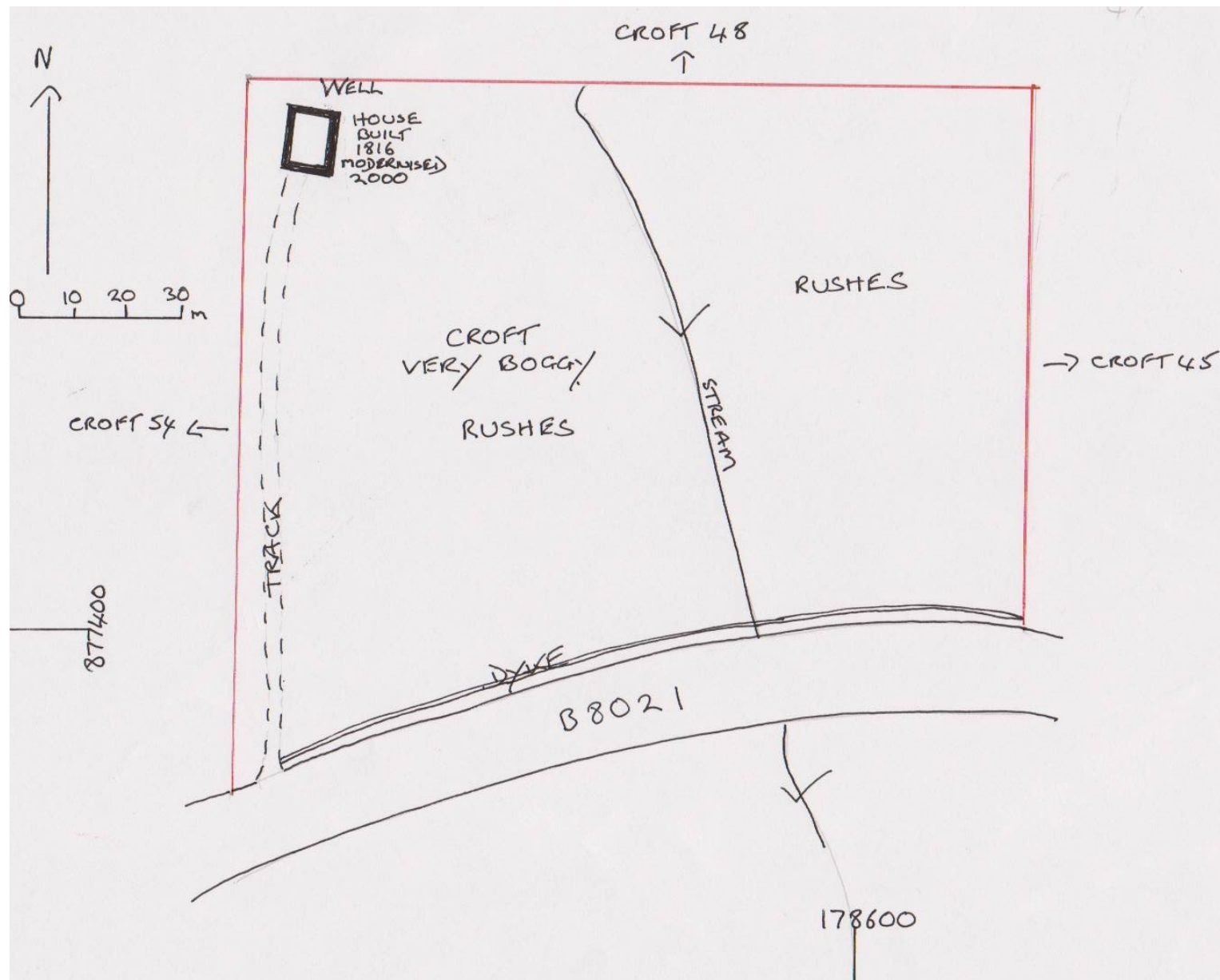


CROFT 47 LONEMORE CROFTING TOWNSHIP.



## CROFT 47 LONEMORE TOWNSHIP.

This croft is listed on estate records as 4.25 acres. Today apart from the area beside the track it is covered with rushes and reeds and is very boggy .

The house that is at the N end of the croft is shown as roofed on both the first and second OS. We are told by its current owner that it was built in 1816 and was modernised in 2000. As it is harled the stonework is not visible. It is still occupied on a permanent basis.

The other building shown as roofed on the second OS , S of the house has now disappeared. There is a ruined caravan in its place.

Behind the house is a well not marked on any OS maps.



The water in this well is still clear.

Running along the S edge of the croft is a stone dyke that runs along most of the N edge of the B8021 through the township.