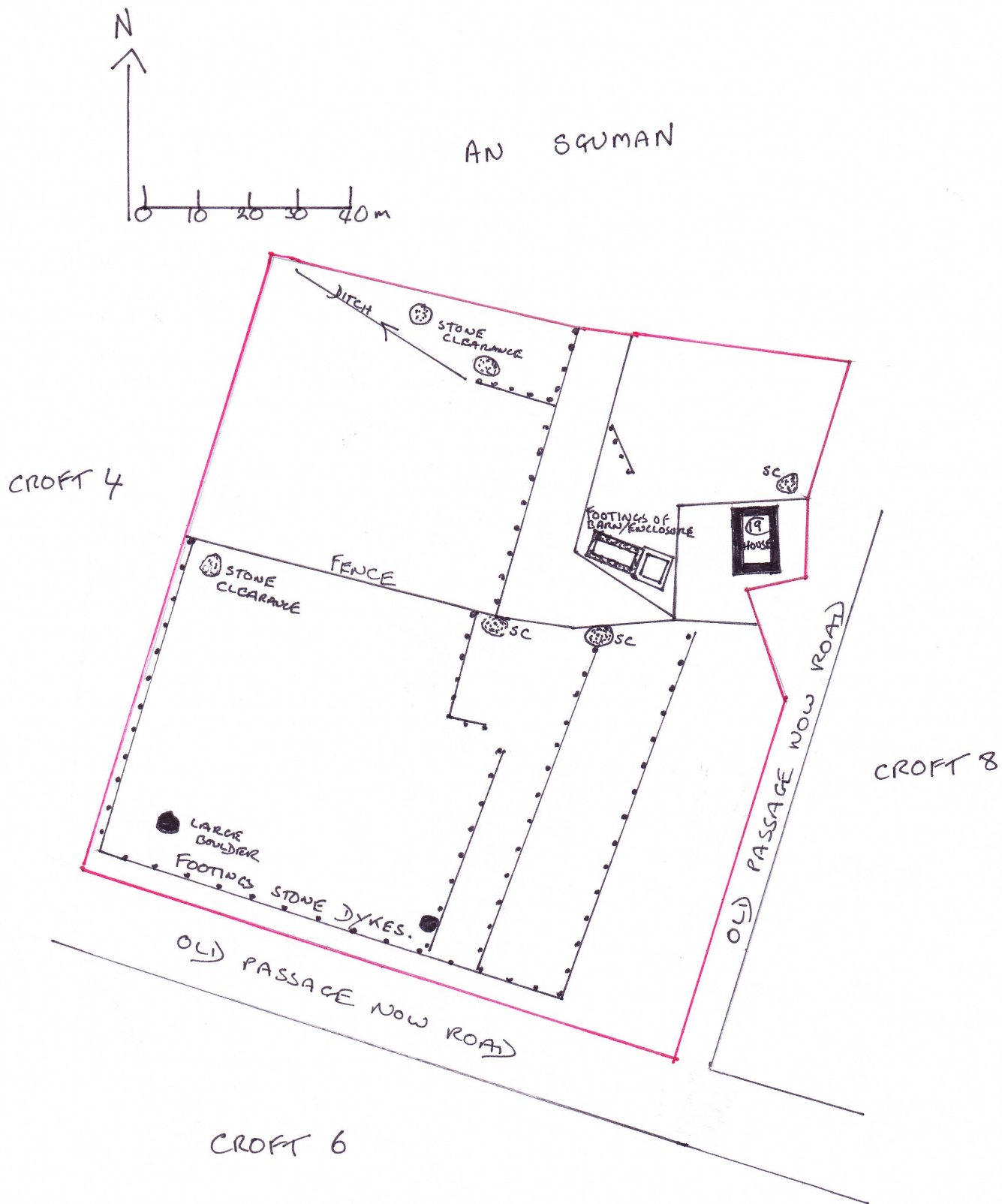


Plan of Croft 5 known as 'Lot a' Bhuidleir'  
Port Henderson  
Centred on NGR NG 7480 7369



## Croft 5, Port Henderson

The ground on this croft slopes gently from S to N, and although once used for arable cultivation as shown by stone clearance piles, footings of parallel stone dykes, and a drainage ditch, it is now used for occasional livestock grazing. The estate map of 1845 gives an acreage of 3.75. An original croft house shown on the 1st OS is still used as a holiday house, and there are the ruins of a barn and enclosure ( see separate description)



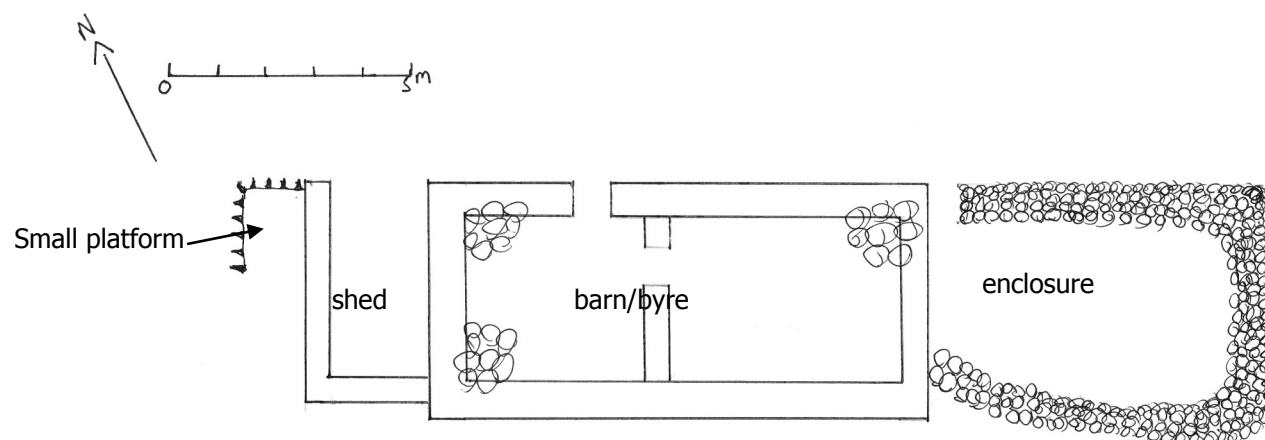
Croft house on croft 5



Footings of stone dykes croft 5



RUIN OF BARN/BYRE WITH ADJOINING SHED AND ENCLOSURE CROFT 5 PORT HENDERSON.NG 74831 73696 GPS.ELEVATION 16m  
SURVEYED 27-02-10



These ruins are built to the W of the house on croft 5 and were known to comprise a barn/byre, shed, and enclosure. The buildings had a thatched roof which was pulled down in the late 1960's, which the Aerial Photo's confirm showing the roof still in place in 1964. They are shown as unroofed on the 1st OS and roofed on the 2nd OS.

The stone in the buildings is local sandstone which is a mixture of chosen and dressed stone with rubble infill, that is layered. In places there is still evidence of lime mortar used for pointing between the stones. The walls vary in thickness from 0.5m to 0.7m, and in height from 0.5m to 1.3m.

The barn/byre has one entrance evident, and a dividing wall inserted so it has two parts, with the floor on the E side being higher than the floor on the W side. There is no evidence of any windows, or chimney.

The shed has the highest remaining walls but their construction is rougher than the barn/byre. Its entrance is full of debris/rubbish so difficult to survey. To the W of the shed is a small raised platform of small boulders.

The enclosure wall adjoining the E end of the buildings is made of boulders.

Some parts of the ruin have been rebuilt and repaired at various times.

RUIN OF BARN/BYRE WITH ADJOINING SHED AND ENCLOSURE CROFT 5 PORT  
HENDERSON



LOOKING SOUTH  
SHOWING RUIN OF SHED AND  
W END OF BARN BYRE.

LOOKING SW AT RUIN OF  
BARN/BYRE



LOOKING SE AT E END OF  
BARN/BYRE AND ENCLOSURE

RUIN OF BARN/BYRE WITH ADJOINING SHED AND ENCLOSURE CROFT 5 PORT  
HENDERSON



CONSTRUCTION OF S WALL OF BARN/BYRE  
SHOWING OUTER AND INNER FACES WITH RUBBLE  
INFILL.

LIME MORTAR USED TO POINT GAPS BETWEEN  
STONES

LIME MORTAR MIXED WITH SMALL STONES TO  
PACK BETWEEN LARGER STONES.

