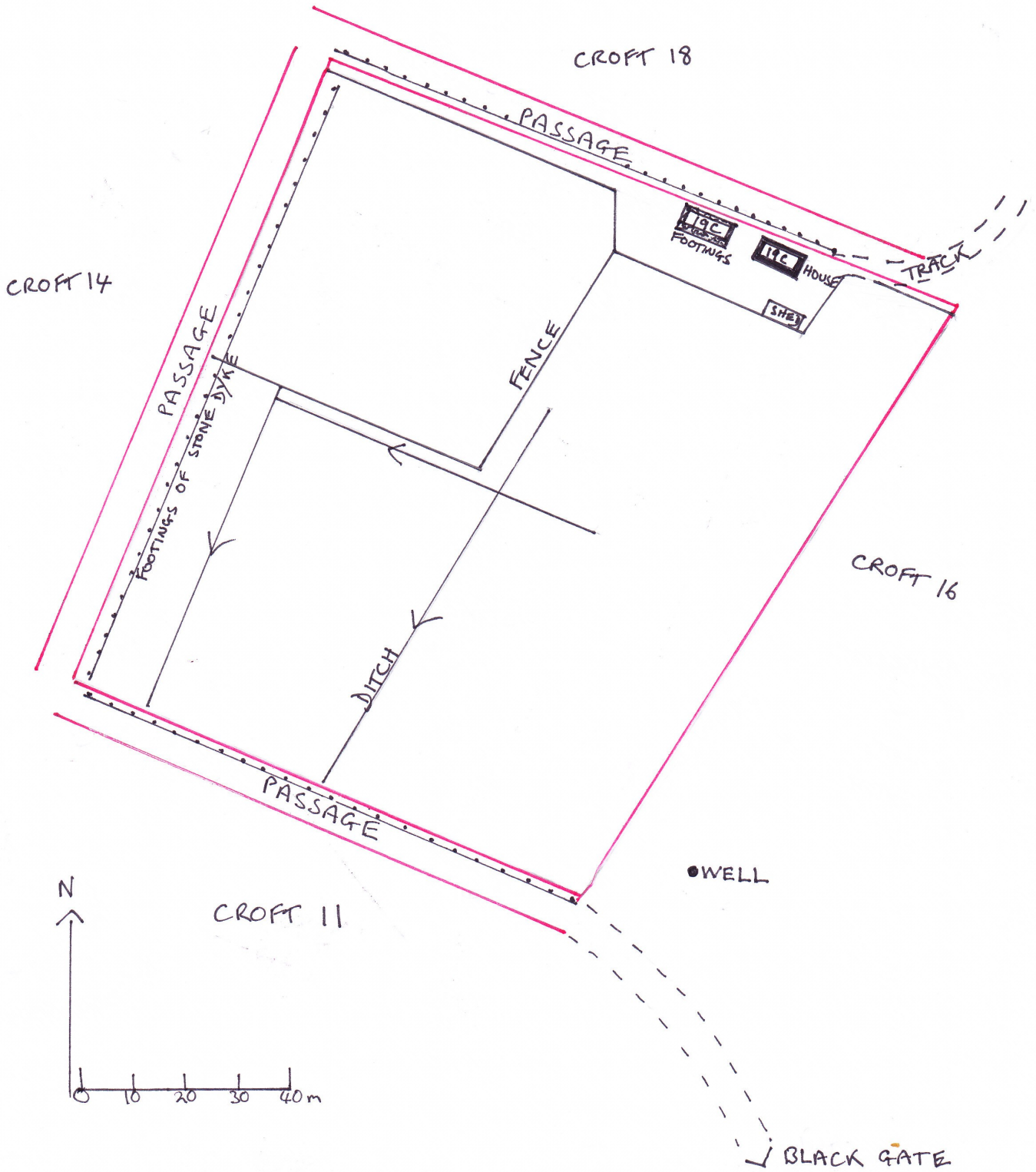


Plan of Croft 15 known as 'Lota Chrubaidh'
Port Henderson
Centred on NGR NG 7581 7393



Croft 15, Port Henderson.

This croft is unused today with most of the land being under rushes and nobody living on the croft. The 1845 estate map gives an acreage of 4.0. The 1st OS shows a house and three small buildings and the 2nd OS the same house and one larger outbuilding. Today the house is still roofed but derelict, and the outbuilding remains as footings. (see separate description). The footings of old boundary stone dykes can be seen on the W, N, and S edges of the croft, but today the boundaries are marked with post and wire fencing.

Several drainage ditches cross the croft, but are not maintained so the land is very boggy. It slopes gently from NE to SW.

To the E of the croft on common grazing lies a boggy area where the main well of this side of the township used to be. NG 75858 73828 GPS but this has been destroyed by grazing livestock. This was replaced by a small water tank sunk into the ground just up the slope from the well, which still pipes water to the byre on croft 14.

From the passage on the S boundary of croft 15 the outline of a track runs SE to join the main route between the townships in the area. Where the track met the estate iron fence was a gate called ' The Black gate' so called because of all the coats of creosote that coloured the wood black.



Derelict house on croft 15

Croft 15, Port Henderson.

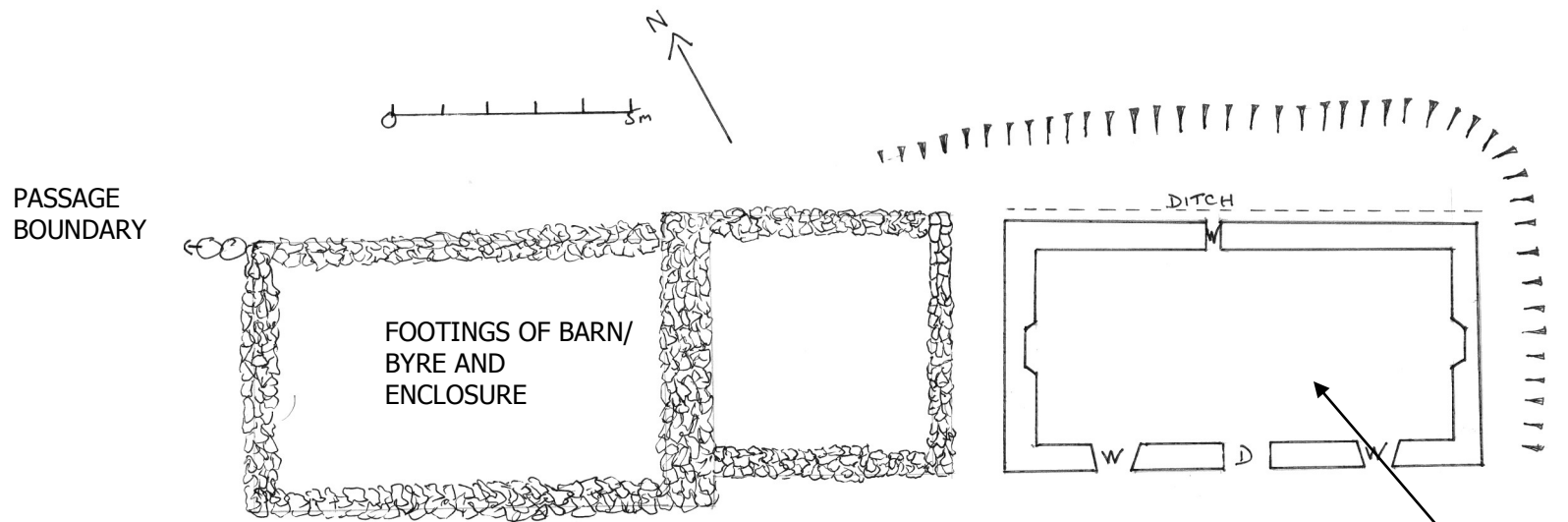


All that remains of the Black Gate are two strainer posts and metal fittings attached to the iron fence.

Looking along the old track towards the SE corner of croft 15 where it joins the passage. The rushes on croft 15 can be seen.



DERELICT HOUSE AND FOOTINGS OF BARN/BYRE CROFT 15 PORT HENDERSON.NG 75870 73954. ELEVATION 12m.
 SURVEYED ON 03-06-10.



This traditional croft house is shown as roofed on the 1st OS map. It is known as Crubaidh and Crusher's house after the two gentlemen who were the last residents. 'Crubaidh' was so known as he had lost a leg at 19 in an accident in S. America, and 'Crusher' his brother lived here until 1982 when they went to stay at 'Strathburn' the resource centre for the elderly in Gairloch. The house has 2 windows at the S side with 2 further dormer windows in the roof, and a small window on the N side. There is a door, and chimneys at each gable end. Although the house has been harled, where this is falling off the stonework can be seen as consisting of dressed and layered stone with snecking between the larger stones. The windows and door have concrete lintels and sills, indicating later work. The S and N walls stand 2.5m high and are 0.6m thick. To the W of the house are the footings of a barn/byre and small enclosure and behind the house a ditch improves drainage. At the W end of the footings a boulder wall continues marking the S boundary of the passage between crofts 15 and 18



DERELICT HOUSE AND FOOTINGS OF BARN/BYRE CROFT 15 PORT HENDERSON

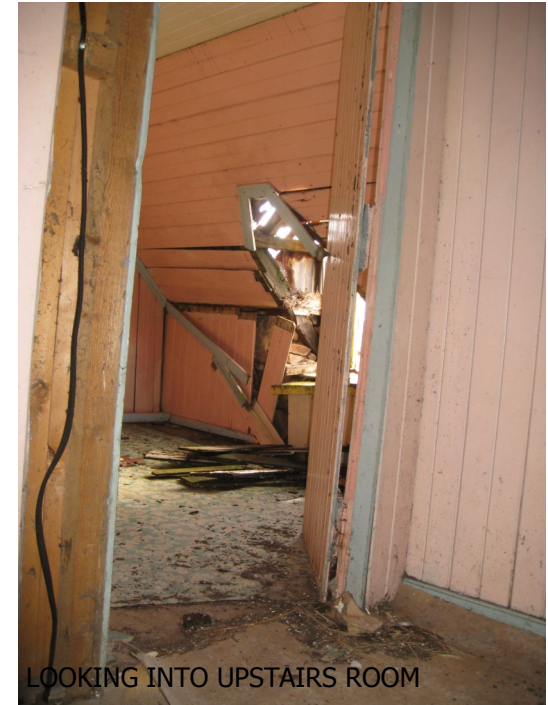


FIREPLACE

DETAILS OF DERELICT HOUSE



LOWER WINDOW BOARDED UP WITH NOTICE FROM HIGHLAND REGIONAL COUNCIL DECLARING HOUSE AS DANGEROUS.



LOOKING INTO UPSTAIRS ROOM



WALLPAPER BESIDE WINDOW



DOORHANDLE

DERELICT HOUSE AND FOOTINGS OF BARN/BYRE CROFT 15 PORT HENDERSON



LOOKING E OVER FOOTINGS TO HOUSE



Detail of stonework by lower W window

Small window in N wall

Looking W along footings with passageway stretching into distance

Footings of wall between barn/byre and enclosure

