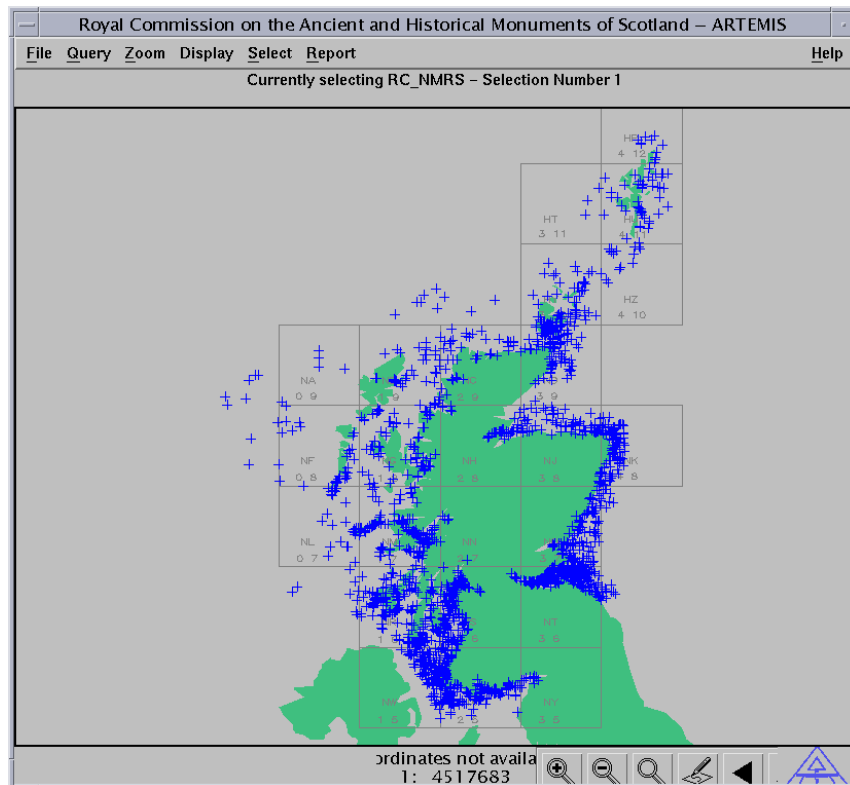


# The National Monuments Record of Scotland - Maritime Enhancement Project

Final Report for Historic Scotland and the Royal Commission on the Ancient and Historical Monuments of Scotland



Ian Oxley  
April 2001

Scottish Institute of Maritime Studies  
University of St Andrews  
St Andrews  
Fife  
KY16 9AJ

## **Acknowledgements**

The help and encouragement of a large number of people in maritime archaeology and its associated disciplines is gratefully acknowledged. As usual they are too numerous to refer to individually but particular contributors merit special mention: Gordon Barclay and Noel Fojut from Historic Scotland, Diana Murray, David Easton, Rebecca Moloney, Bob Mowat, and past and present members of the IT staff (all from RCAHMS), Robert Prescott from SIMS (University of St Andrews), and Julian Crowe from IT Services (University of St Andrews). The substantial input in the early stages of the project and for Project Management throughout represented the significant contribution of Deanna Groom, and the work of Colin Bain in the middle period is also gratefully acknowledged.

## **Introduction**

This report represents a summation of work carried out for Historic Scotland and the Royal Commission on the Ancient and Historical Monuments of Scotland (RCAHMS) by the Scottish Institute of Maritime Studies (SIMS) of the University of St Andrews. The initiative, entitled the National Monuments Record - Maritime Enhancement Project (henceforth referred to as the Project), has been actively collating information about inter-tidal and underwater sites in Scotland for the National Monuments Record (NMRS). The Project commenced by assisting the acquisition of data from the Hydrographic Office, Ministry of Defence, which has since been supplemented by historical research in public records.

This report concentrates on summarising the results of the second phase of the Project from late 1996 to March 2001. This extension of the original project sought to fill out information on the sites derived from the Hydrographic Office data and add new data from different sources. Information on relevant geophysical data would also be sought so that additional aspects of the maritime heritage such as evidence survival patterns in the marine environment could be assessed. An overall objective of the second phase was to attempt to maximise the number of maritime sites and references in the NMRS as a whole, rather than pursue research in depth on any one site or area of Scotland.

These aims and objectives have been achieved through the documents, studies and assessments referred to in this report, and the final deliverable is an additional database of historical references to wrecks and casualties supplied on the enclosed CD.

## **NMRS - Maritime development**

The first step for the Project, in 1995-6, was assisting in the design of an extension to the existing NMRS Oracle database (Groome and Murray 1996). While the Maritime Record has been built as an integral part of the NMRS Oracle database, a number of adaptations have been made to ensure that specialised information can also be included. Amongst other details, location co-ordinates are recorded in Latitude and Longitude as well as OS National Grid References. A conversion routine was developed which allowed an entry in either format to be calculated and displayed in the alternative system. Moreover, a new entry option has been added to record information specifically related to shipwrecks, such as details of the vessel at time of loss, depth of the water in which the remains lie, together with passage, cargo and origin data.

In the next stage data was acquired from the Hydrographic Office of the Ministry of Defence covering records of vessels which sank before 31 December 1945 and locations of known wrecks in Scotland's waters. Considerable editing of these records had to be undertaken to prepare the data for entry into the NMRS.

## **Maritime record enhancement**

A programme of information entry from published sources was carried out in 1996 and 1997. A mailshot to Scottish museums regarding maritime finds was carried out in 1997 that generated a 95% response rate. This coincided with the purchase for the Library and Reading Room of recommended publications relating to the maritime history and archaeology of Scotland. Material was also incorporated from these sources and the Archaeological Diving Unit's archive of information relating to sites in Scotland designated under The Protection of Wrecks Act 1973. Some of the former work was negated by subsequent problems with copyright when access to the record by the general public was enabled by CANMORE. As a result a significant proportion of the Project's time in late 1998 was devoted to amending text references in the existing NMRS records to published works. Further work in 1998 was done altering Maritime record numbers to accommodate changes in NMRS numbering procedures. Advice on the necessity and/or implications of purchasing shipwreck records from Richard Larn was also supplied in 1998 after the Project carried out a feasibility study of a sample of his data. During 1998 the Project made contact with Kingfisher Charts to lay the groundwork for the acquisition of fishermen's fastening data. Negotiations were then passed over to RCAHMS to pursue on an official basis.

### **Regional and Islands Archaeologists survey**

A mailing to Regional and Islands Archaeologists with regard to their SMRs' capabilities in recording maritime finds and sites produced a 90% response rate which was increased to 100% after telephone follow-up.

### **Named Locations**

This concept enables a degree of confidence to be generated from the variable level of detail usually found in the historical references to shipwrecks and casualties. Either OS or Latitude - Longitude co-ordinates or Named Locations are required for Maritime Record entries. In 1997, work began on defining named locations as a hand list, over seventy named locations have so far been defined. A spreadsheet of the list of Named Locations (to enable it to be imported into Access or ORACLE) with their relevant Latitude - Longitude and National Grid References was produced in 1997. This anticipated the possibility of the spreadsheet being available to Maritime Record or Geographical Information System (GIS) users so that they could assess the validity of locations and distribution patterns that might be displayed.

### **Maritime record research and data entry**

To facilitate record entry a Maritime Recording Manual was created at the end of the first phase in 1995 and an updated version was produced in 1997. In addition, during this period a considerable effort was put into assessing the feasibility of remote access to the NMRS to enable Project staff to amend and enhance the Maritime Record from outwith RCAHMS. The software PC ANYWHERE was explored, but the insufficient IT resources at RCAHMS could not take this forward at that time.

### **Shetland data**

In 1997 the Shetland Archive Service supplied the Project with a copy of a Manpower Services Commission database (in Access) of around a 1000 entries relating to shipwrecks in the area. These records were edited and amended to fit the NMRS Maritime Record model in 1998 and then translated into a form which could be incorporated into ORACLE using a Maritime Conversion routine developed at RCAHMS by Mark Bell. A database comprising 988 records was transferred to RCAHMS in April 1998. The successful transfer of the Shetland dataset using the Maritime conversion routine demonstrated that the methodology is suitable for incorporating Access databases into the NMRS.

### **Orkney data**

It appears that a donation of shipwreck data from local Orkney researcher David Ferguson has been lost in RCAHMS since 1996. Subsequent work with Mr Ferguson on NAS initiatives in Orkney revealed that he has supplied further copies to the Orkney SMR. Staff at RCAHMS were to explore the possibility of transferring the data to the NMRS through the reciprocal agreement the RCAHMS has with regional SMRs. Project staff are unsure if this has taken place.

### **Primary documentary research methodology**

Throughout 1996 and 1997, NMRS records were created and enhanced from sources such as existing publications such as diver guides, and resources such as salvage, lighthouse and other business archives. In the autumn of 1997 work began on the incorporation of primary references of shipwrecks and casualties in Scotland's waters. The initial sources were hard copies of Government publications from the Nineteenth Century held in the University of St Andrews Library. In the first instance references were transcribed onto paper and then typed into Word files. The next development involved typing the information into a purpose-built Access database (which included fields corresponding to those on the NMRS ORACLE

Maritime extension). A final refinement enabled the Access database to be taken into the Library on a portable computer. This system in turn allowed a significant increase in the rate of documentary source transcription to be achieved in early 1999 when the work transferred to the National Library of Scotland in Edinburgh.

Records of wrecks and casualties in Scotland's waters were transcribed word for word into the Report text field of an Access database from UK Government Parliamentary Papers and Lloyd's List. Each entry was comprehensively referenced and the complete list of sources covered is included in Appendix I. Any omissions from the complete run of Lloyd's List are listed separately in Appendix II. These volumes were unavailable either in the National Library of Scotland or the Guildhall Library, London.

Each entry in the documentary sources was transcribed as it was encountered without any searching of the dataset to see if the latest documentary record related to a vessel already entered on the database. It was thought that it would be more efficient to leave sorting for duplicate entries until the direct transcription phase was completed.

Work commenced on incorporating records from Lloyd's List in April 1999 beginning with the few existing hard copies from the late Eighteenth Century archived in the National Library of Scotland. Subsequent years were available on microfilm.

Throughout the work it became apparent that changes in the way the original shipwrecks and casualties were recorded by Lloyd's and their Agent's at the time, would affect the rate at which the records could be transcribed. Initially the records relating to Scotland could be easily and quickly differentiated. However, in the late Nineteenth Century the entries were switched from being indexed by Country then Vessel Name to by Vessel Name alone. This significantly increased the time needed to isolate Scottish records from the rest of the UK and overseas. In addition, the entries were becoming fewer but more detailed towards the end of the Nineteenth Century. This also increased the time necessary for transcribing each entry.

In the later stages of the project it became clear that there was not enough time to cover the complete run of Lloyd's List up to 1900 whilst still leaving time to clean the dataset (to eliminate duplicates) and to prepare the final report. Therefore direct transcription ceased when the end of 1884 of Lloyd's List was reached in early 2001.

At the end of the transcription stage the dataset was initially prepared by transcribing information about the vessel name and the date of loss from the Report text into their relevant fields. A query was then constructed and run which identified the duplicate records that related to the same wrecking or casualty incident. Duplicate records were eliminated by cutting and pasting text from one record into the earlier one.

The final deliverable is in the form of an Access 2000 database comprising 11,100 records. This database is included on the enclosed CD as ParlPapLL.mdb.

## **Regional initiatives**

In line with the Project's original aims a programme of initiatives to raise awareness and increase co-operation with the Regions of Scotland has been pursued. Concentrating on Fife, Orkney and Shetland and although promising to start with, these initiatives have stalled in the wider sphere of the RCAHMS' relationship with the regional SMRs. ~~Such initiatives seem to require substantial funds to sustain them and require constant monitoring and input~~

### **Fife**

The Project has provided a significant input into raising the understanding and protection of the maritime archaeological heritage in Fife through co-operation with the Maritime Fife initiative (Oxley 2000). The

steady development of the NMRS - Maritime Record paralleled the establishment of the Maritime Fife inventory produced in conjunction with Fife Council Archaeology Service. Through 1997 and 1998 Deanna Groom carried out editing work on the Maritime Fife database and records to enable full compatibility with the NMRS to be achieved. Further co-operative work was carried out on the Maritime Fife initiative to provide archaeological focal studies for the Fife Council Shoreline Management Plan (Oxley 1998, Oxley nd).

In 1998 the Project worked with a Scottish shipwreck researcher, Bob Baird, after he donated copies of extracts of Fife newspaper reports relating to local shipwrecks to Maritime Fife. Subsequently the information from these references was entered into the NMRS - Maritime. Throughout the period of the Maritime Fife initiative the Project assisted in research into the possibilities of a maritime archaeological GIS resource in Fife (Oxley & Groom nd).

Copies of all reports and database records generated throughout the five years of the Maritime Fife project were sent to RCAHMS for incorporation in the NMRS. The Maritime Fife project effectively ceased, together with Project co-operation in Fife, when the period of core-funding from Fife Council ended in 1998.

## **Orkney**

In March 1997 Deanna Groom carried out a four-day fieldwork and information gathering exercise to Orkney. Meetings were held with interested parties such as the Scapa Flow Harbour Master and local diving interests. The fieldwork report and results of information gathering were compiled as an unpublished report (Groom 1997a).

On behalf of the Project, Deanna Groom participated in an Nautical Archaeology Society Part I course in Heriot-Watt University's Orkney campus in 1997 and an additional survey of two of the Blockships was carried out. Survey data and copies of all recording forms were sent to RCAHMS. Deanna Groom participated in a further NAS fieldschool in 1998 and was able to liaise with the Orkney Archaeologist about adapting the local SMR to accept maritime sites.

A special meeting to discuss future opportunities for maritime archaeological recording in Orkney was organised on behalf of Historic Scotland and RCAHMS, and held in November 1997. Representatives from local dive boat operators, Local Authority, museum and tourist services, and other key local diving and environmental interests were invited. Although there was some initial suspicion and resistance, mainly from the dive boat operators, it was felt overall that they were reassured that any archaeological activities would not impinge on their business interests. They were less convinced that they could usefully incorporate archaeological projects into the latter.

## **Shetland**

A special Historic Scotland grant enabled a visit to be made to Shetland by Deanna Groom in 1997 to review the Shetland SMR and to suggest ways in which the database might be enhanced to include maritime records. The main conclusions were that technical computer expertise would be required to upgrade the SMR, support and training of staff would be necessary to enable an on-site practical capability to be established, and that the willingness of the Shetland Archive Service and the Shetland Museum would only be capitalised on if a strategy could be developed which dealt with local needs rather than one imposed from the centre.

In early 1998 Colin Bain carried out a second visit to Shetland for the Project, to ascertain the status and availability of shipwreck records for the area, and shipwreck artefacts in the Shetland Museum. A copy of a Manpower Services Commission generated database (supplied after the first visit) was checked at this time. This visit highlighted difficulties of gaining access to local records if the full co-operation of local organisations cannot be secured.

## **Geographical Information System research and development**

The Project has been involved in the development of RCAHMS' GIS capabilities initially by helping incorporate a GIS layer of the areas of Scotland's waters covered by Admiralty Charts. A feasibility study was carried out by SIMS on behalf of RCAHMS, in which the definition of specific maritime archaeological (GIS) layer were explored (Groom 1997b). The research analysed examples of marine and maritime GIS data worldwide that could be utilised to enable operations such as the predictive location modelling of submerged archaeological sites and the mitigation of developmental impacts. Current uses of GIS in the marine zone were assessed to discover what datasets were being used and how they were combined. It was discovered that much of the pioneering marine GIS work has been carried out in relation to military uses, hydrographic survey, and in the broader context of total coastal zone management.

A Specialist Seminar, entitled *Marine Digital Data For Scotland: Acquisition, Availability and Application*, was organised by the Project at the University of St Andrews on 29 November 1999. The seminar, hosted jointly by the SIMS and the RCAHMS, brought together the key players in the investigation of the marine environment of Scotland, plus UK representatives of organisations that have an interest Scotland's marine environmental data. The list of presenters and delegates (over 75 in total) usefully spanned originators, managers, suppliers and users of marine data in Scotland, with people coming from Government, academic and industrial organisations, and in their own right as individuals.

The seminar proved to be an important showcase for initiatives currently being developed (including the NMRS - Maritime), but also highlighted that there are many areas where dialogue and communication could improve efficiency and maximise the value of results. The urgent need to advance co-operation is especially apparent in the exponential growth in the collection, management, transfer, and use of data in digital form. The maximum value of the data collected about marine environments will only be realised if common standards and procedures can be agreed. The proceedings of the Seminar were subsequently compiled (see Groom & Oxley 2000) and disseminated by the Project to speakers and delegates, and University libraries in Scotland.

## **NMRS - Maritime Record access, interpretation and training**

Throughout the period the Project has attempted to raise the profile of the NMRS - Maritime initiative wherever possible.

## **Proposals for a Regional and Islands Archaeologists support pack**

In 1998 the Project drafted proposals for supplying a support pack to Regional and Islands Archaeologists. The contents of the pack included up-to-date guidance on the legal, administrative and professional frameworks that govern maritime archaeological practice together with information on the NMRS - Maritime Record. In 1998 attempts were made to interest the Association of Regional and Island Archaeologists in presentations on maritime archaeology and the NMRS Maritime. In 1999 RCAHMS undertook to take over responsibility for making such a presentation.

## **RCAHMS staff training and Project reporting**

An important aspect of the Project has been maintaining a high level of communication between Project and RCAHMS staff. In addition to regular submission of quarterly reports of progress, training sessions for RCAHMS staff in aspects of maritime archaeological practice and recording have taken place. Additional sessions on the use of Admiralty Charts were also offered

## **CANMORE**

In 1998 the Project provided an appraisal of CANMORE looking at the ways the NMRS could be searched online from the point of view of the average shipwreck researcher or diver. Suggestions were made as to how the interface could be improved, including a revision of the design and navigation of the web pages to include Maritime options. The report included examples of on-line shipwreck databases from other countries.

## **Library and Public Reading Room Resources**

A survey of sources relating to Scotland's maritime past and recommendations for Library purchases were made periodically by the Project team. The map collection also has been enhanced with Admiralty Charts and other photographic, text and documentary materials have been recommended.

## **Shipwreck researchers**

A survey of the principal shipwreck authors and researchers in Scotland was made at the beginning of the Project and attempts were made to contact each one.

## **Display and outreach**

During 1999 the Project drafted a maritime insert for the RCAHMS leaflet and sourced accompanying illustrative material. The Project also supplied to RCAHMS the display material developed for the *Digital Data for Scotland* Seminar Day.

## **Southernness Wreck Survey**

At the request of Historic Scotland an assessment was made of a recently exposed shipwreck on the foreshore at Southernness. A basic photographic and measured survey was carried out, and a report prepared (Oxley & Groom 1999). Copies were sent to the local SMR and the NMRS.

## **Conclusions**

Overall the Project has been a success. RCAHMS has been supplied with a substantial enhancement of the NMRS - Maritime that requires a minimum amount of adjustment. Further datasets have also been sourced or produced during the Project. Furthermore the Project has enhanced the supportive material to help users of the maritime records get best value from them. The areas of the Project's work which have proved most difficult (and ultimately disappointing) have been in developing the Regional initiatives.

Finally, the Project has been aware throughout the work of the constraints placed on RCAHMS in supporting the Project's efforts (whether through allocating staff time, accommodation and computer resources). Such problems at times caused significant delays and frustrations.

In November 2000, an outline programme for a regional pilot study in the Forth to build on the first two phases of the NMRS - Maritime Record Enhancement Project was submitted to Historic Scotland as a possible grant application (Connect Archaeology 2000). In addition to this document, the Project offers the following specific and general recommendations to capitalise on the advancements that have been made.



## **Recommendations**

### **NMRS specific recommendations**

#### **Parliamentary Papers and Lloyd's List records**

Prior to assimilating the enclosed records into the NMRS, it would be worth carrying out further refinements such as:

- Check Vessel name spelling variations for duplications
- Check Unknown vessel name records for duplication on the basis of date of casualty
- If required, transfer relevant data from Report text to relevant fields
- Check for casualties subsequently recorded as being recovered and delete from the database if required.

#### **Other records**

It is understood that a number of datasets are still awaiting assimilation into the NMRS

- Incorporate the Shetland records
- Check, verify and assimilate Larn records
- Locate Ferguson records or negotiate another copy via the Orkney Archaeologist
- Make links with active shipwreck researchers (e.g. Ian Whittaker) and generate working relationship with those recreational divers who have shown interest in wreck site reporting (e.g. Rod Macdonald)

Future enhancements of the NMRS might usefully be arranged from resources in local, public, university and business archives. In addition, there is still scope for arranging data exchanges with organisations like the Crown Estates (fish farms and other developments, historic boundaries on the foreshore), Seafish Industry Authority (fishermen's fastenings and other obstructions), and those responsible for licensing the extraction of oil and mineral resources (seabed industry structures).

In the future it will be necessary to develop structures to ensure that new information is added to the NMRS in a timely fashion, and that existing information is upgraded. This requires developing links with those persons who are actively gathering new information. In Scotland at this time this group is made up primarily of those sport divers with a particular motivation and interest in maritime history, and one or two active shipwreck researchers.

### **General recommendations**

The best overall strategy would be to pursue a policy of the integration of all aspects of maritime archaeology into the mainstream heritage management of Scotland. This would mean encouraging decision-makers at all levels (whether in Historic Scotland or RCAHMS) to treat the submerged resource in the same way as the terrestrial heritage. This is in agreement with Historic Scotland's published policy (Historic Scotland 1999). To achieve this aim requires training, awareness-raising and the supply of the appropriate tools and resources. One of the latter requirements is as comprehensive an inventory of known submerged sites as possible. The specific recommendations listed below are designed to further develop and refine the NMRS. The recommendations will require RCAHMS technical expertise and resources if they are to be fulfilled within a reasonable timescale.

## **GIS**

A key area of future development of the RCAHMS GIS lies in maximising the analytical power of GIS to enhance the investigation of data about existing or potential sites against the context of their marine environmental background. The inter-comparison of data derived from diverse survey and investigation methodologies coupled with innovative visualisation capabilities of GIS will also greatly enhance the utility of information in the NMRS – Maritime record, enabling future field investigations in the marine zone to be targeted more effectively.

If these benefits are to be realised high quality data about the marine environment of Scotland is required in a form which is compatible with the RCAHMS GIS. To this effect RCAHMS should be actively looking at where such data might be obtained, particularly through co-operative exchange agreements, thus avoiding unnecessary duplication of data capture exercises. This work should build on the contacts made during the Project's Specialist Seminar day and be integrated with any initiatives pending via the Scottish Coastal Forum, Scottish Executive Geographic Information Service or AGI Scotland etc..

### **Education, training and outreach**

There is a need for a programme of training, education and awareness-raising for all levels of decision-makers and staff (i.e. Historic Scotland and RCAHMS) centred around the maritime records which have been incorporated into the NMRS. This programme should be made available to external users such as Regional and Island Archaeologists, SMR Officers, Local Authority officials, academic researchers as appropriate. A further extension could be to the general public, particularly divers (through a strong integration with the NAS Scotland Co-ordinator) and shipwreck researchers.

This initiative could also help to raise public awareness of maritime archaeology, role of Historic Scotland, RCAHMS and the NMRS through a structure to inform users of marine environments e.g. recreational divers, developers, associated resource exploiters (e.g. fishermen). A further extension might take the education and participation initiatives into the marine environment itself (something which is lacking in Scotland) by developing opportunities such as shipwreck trails (coastal and submerged) and parks or reserves.

### **Regional initiatives**

Developing and sustaining effective Regional initiatives is probably the key recommendation with regard to ensuring the long-term success of the overall recommendation outlined above. If every sector of cultural resource management does not subscribe to the aim of establishing an effective maritime record and capability for management and protection then no amount of short-lived projects will achieve what is required.

Further work is required to gain best value of regional and local initiatives that are occurring at an increasing rate around the country. The concept of Integrated Coastal Zone Management is gaining in popularity at Government and Local Authority levels enabling a diverse range of projects and developments to consider incorporating aspects of the submerged cultural heritage in their interests. Although this phenomenon is to be welcomed in itself, it raises issues of data compatibility, security, confidentiality and access. Such advances can only increase the need for a high quality information source on the maritime and submerged heritage of Scotland and the development of the ways in which this resource is made available to potential users, whether developers, archaeologists or the general public.

Enhancing the programme of data exchange with SMRs to include the maritime records may generate short-term advances in the scope and quality of the NMRS. To be of lasting value local archaeological organisations should be enlisted to develop local initiatives (like Maritime Fife) to enable the quality of their local maritime records to be increased and enhanced for their direct benefit, and with advantages to national historic environment requirements.

### **The next phase**

The above recommendations could be carried forward piecemeal or by trying to integrate the tasks into the responsibilities of existing staff. However, it is recommended that a centrally-funded capability, with the relevant grade, authority and influence, is established to fulfil responsibilities such as:

- Organise and implement a schedule for verifying the NMRS - Maritime, with quality checks,
- Develop co-operative fieldwork opportunities for generating information about new sites in targeted areas,
- Supervise a detailed programme of awareness-raising throughout all levels of Scotland's heritage organisations,
- Push forward the protection of important sites,
- Develop monitoring, assessment and reporting capabilities for protected sites,
- Further research into the identification, monitoring and mitigation of processes which affect maritime sites in Scotland,
- Oversee of further enhancement of the NMRS - Maritime,
- Generate maritime archaeological training and education opportunities (both professional and avocational), integrating with existing initiatives,
- Organise and pursue Regional co-operation programmes.

### **Conclusions**

The first phase of the Project in 1995 enabled the database structure of the Maritime Record to be designed and implemented as an integrated but extended part of the NMRS. From 1996 to 2001 the second phase generated a substantial number of new records based upon an extensive (but not complete) survey of late Eighteenth Century to late Nineteenth Century official records of wrecks and casualties. At the same time attempts were made to establish Regional co-operation initiatives with local heritage organisations in three areas. The second phase also generated information about relevant marine environmental datasets and their originators, and assisted in the development of the RCAHMS GIS. Finally, the Project carried out a number of educational, training and public outreach objectives.

To build on this it is proposed that the next phase should pursue further the integration of maritime archaeological interests in Scotland into mainstream archaeology. Any new initiatives should be more widespread in scope than just the maritime record of the NMRS. They should extend the accuracy and utility of the record by including methods of verifying the existing record, as well as generating new information about previously unknown sites. New initiatives should also serve to enhance the RCAHMS GIS developments because of the widespread advantages of such applications in overcoming the traditional perceptions of environmental differences (i.e. marine and coastal) manifested by historical, administrative boundaries.

The time has come for adequate resources to be sought to force forward the integration of maritime cultural resource management in Scotland. The acceptance that there should be no difference in the care and protection of all sites regardless of their environmental situation is relatively widespread. What is lacking is the will, resources (human and monetary), structures and detailed policy to carry this forward. This report recommends that an adequately resourced capability is established to pursue the detailed recommendations outlined above, for the benefit of present and future generations.

## References

- Connect Archaeology, 2000, *Shipwrecks of the Forth: RCAHMS Maritime Record Enhancement Project Phase III Research Proposal*. Connect Archaeology, University of St Andrews. Unpublished document for Historic Scotland.
- Groom, D., 1997a, *Orkney's Maritime Archaeology: Fieldwork Report and Results of Information Gathering*. Scottish Institute of Maritime Studies, University of St Andrews. Unpublished report for Historic Scotland and RCAHMS.
- Groom, D., 1997b, *Maritime Archaeology and GIS: Sourcing Datasets for the National Monuments Record (Scotland)*. Scottish Institute of Maritime Studies, University of St Andrews. Unpublished report for Historic Scotland and RCAHMS.
- Groome, D. and Murray, D., 1996, The creation of the NMRS Maritime Record. In *Monuments On Record: Annual Review 1995-6* (Eds. RCAHMS). Royal Commission on the Ancient and Historical Monuments of Scotland, Edinburgh: 38-39.
- Groom, D. & Oxley, I. nd. Maritime Fife, Managing Fife's Underwater Heritage: a feasibility study for a Maritime Archaeological GIS. In *Contemporary Themes In Archaeological Computing*, (eds D. W. Wheatley, G. P. Earl and S. J. Poppy) Oxford: Oxbow Books. (In press).
- Groom, D. G. & I. Oxley, (eds.), 2000, *Marine Digital Data for Scotland: Acquisition, Availability and Application*. Proceedings of a Specialist Seminar held at the University of St Andrews, 29<sup>th</sup> November 1999. Unpublished report.
- Historic Scotland, 1999, *Conserving The Underwater Heritage*. Historic Scotland Operational Policy Paper HP 6. Historic Scotland, Edinburgh.
- Oxley, I., 1998, *Archaeological Shoreline Management Plans: Focal Studies for Historic Scotland*. Scottish Institute of Maritime Studies, University of St Andrews. Unpublished report.
- Oxley, I., 2000, Maritime Fife: An Integrated Study of the Maritime Archaeological and Historical Resource of Fife. In Aberg, A. & C. Lewis, (eds.), 2000, *The Rising Tide: Archaeology and Coastal Landscapes*. Oxbow Books, Oxford: 29-37
- Oxley, I., nd, Archaeological Focal Studies in advance of the Fife Council Shoreline Management Plan. In Ashmore, P. & T. Dawson, (eds.), *Coastal Archaeology in Scotland*. Historic Scotland, Edinburgh.
- Oxley, I. & D. Groom, 1999, *The Southernness Point Wreck Investigation*. Scottish Institute of Maritime Studies, University of St Andrews. Unpublished report for Historic Scotland.

## Appendix I: Documentary sources included in the data entry exercise

### Parliamentary Papers

List of Collisions at Sea 1845 (1846 (386) XLV.321)  
Return from Lloyd's books of Collisions, Accidents and Wrecks of Vessels 1847-50 (1851 (688) LII.1)  
Admiralty Register of Wrecks and other Casualties on Shores of UK 1850 and 1851 (1852 (XLIX.503))  
Admiralty Register of Wrecks and other Casualties on Shores of the UK 1852 (1852-53 (983) LXI.1)  
Return of all vessels lost through shipwreck in Royal Navy since 1st January 1816 to the latest period the same can be made out, stating likewise the lives that were preserved and the places where the vessels were severally lost. (1833 XXN.355)  
Admiralty Register of Wrecks and other Casualties on Shores of UK 1853 (1854 (337) XLII.647)  
Admiralty Register of Wrecks and other Casualties on Shores of UK 1854 (1854-55 (75) XXXIV.359)  
Abstract Return of Wrecks and Casualties on Coasts of the UK 1855 (1856 [2024] LI.395)  
Abstract Return of Wrecks and Casualties on Coasts of the UK 1856 Session 1 (1857 [2179] XVI.661)  
Abstract Return of Wrecks and Casualties on Coasts of the UK 1857 (1857-58 [2339] LII.465)  
Abstracts Returns of Wrecks and Casualties on Coasts of the UK 1858 (1859 Session 1 [2475] XXV.557)  
Abstracts Returns of Wrecks and Casualties on Coasts of the UK 1859 (1860 [2623] LX.501)  
Abstracts Returns of Wrecks and Casualties on Coasts of the UK 1860 (1861 [2811] LVIII.335)  
Abstracts Returns of Wrecks and Casualties on Coasts of the UK 1860 (1861 [2811] LVIII.335)  
Abstracts Returns of Wrecks and Casualties on Coasts of the UK 1861 (1862 [3028] LIV.845)  
Abstracts Returns of Wrecks and Casualties on Coasts of the UK 1862 (1863 [3216] LXIII.165)  
Abstracts Returns of Wrecks and Casualties on Coasts of the UK 1863 (1864 [3400] LV.1031)  
Abstracts Returns of Wrecks and Casualties on Coasts of the UK 1864 (1865 [3529] L.439)  
Abstracts Returns of Wrecks and Casualties on Coasts of the UK 1865 (1866 [3716] LXV.507)  
Abstracts Returns of Wrecks and Casualties on Coasts of the UK 1866 (1867 [3901] LXIV.367)  
Abstracts Returns of Wrecks and Casualties on Coasts of the UK 1867 (1867-68 [4055] LXIII.421)  
Abstracts Returns of Wrecks and Casualties on Coasts of the UK 1868-69 (1868 [4161] LV.667)  
Abstracts Returns of Wrecks and Casualties on Coasts of the UK 1869 (1870 [C.216] LX.657)  
Abstracts Returns of Wrecks and Casualties on Coasts of the UK 1870 (1871 [C.425] LXI.765)  
Abstracts Returns of Wrecks and Casualties on Coasts of the UK 1871 (1872 [C.605] LIII.583)  
Abstracts Returns of Wrecks and Casualties on Coasts of the UK 1872 (1873 [C.877] LX.1)  
Abstracts Returns of Wrecks and Casualties on Coasts of the UK 1873 (1874 [C.1069] LXI.219)  
Abstracts Returns of Wrecks and Casualties on Coasts of the UK 1873 - 74 (1875 [C.1260] LXX.161)  
Abstracts Returns of Wrecks and Casualties on Coasts of the UK 1874 - 75 (1875 [C.1341] LXX.501)  
Abstracts Returns of Wrecks and Casualties on Coasts of the UK 1875 - 76 (1876 [C.1632] LXVII.191)  
Abstracts Returns of Wrecks and Casualties on Coasts of the UK 1876 - 77 (1877 [C.1891] LXXV.181)  
Abstracts Returns of Wrecks and Casualties on Coasts of the UK 1877 - 78 (1878-79 [C.2314] LXIV.395)  
Abstracts Returns of Wrecks and Casualties on Coasts of the UK 1878 - 79 (1880 [C.2519] LXVI.47)  
List of British Steamships which have been reported to the Board of Trade as having foundered between the 1st of January 1873 and the 16th of May 1880. PP Abstracts Returns of Wrecks and Casualties on Coasts of the UK 1878 - 79 (1880 [C.2519] LXVI.47)  
Abstracts Returns of Wrecks and Casualties on Coasts of the UK 1878 - 79 (1880 [C.2519] LXVI.47)  
Abstracts Returns of Wrecks and Casualties on Coasts of the UK 1879-80 (1881 [C.2906] LXXXII.889)  
Abstracts Returns of Wrecks and Casualties on Coasts of the UK 1880-81 (1882 [C.3177] LXIII.251)  
Abstracts Returns of Wrecks and Casualties on Coasts of the UK 1881-82 (1883 [C.3487] LXIII.135)  
Abstracts Returns of Wrecks and Casualties on Coasts of the UK 1882-83 (1884 [C.4154] LXXI.621)  
Table III: List of the 184 Steamers totally lost included in Table 1 of this Appendix, with the Builder's Name and Address in each case if known. Abstracts Returns of Wrecks and Casualties on Coasts of the UK 1882-83 (1884 [C.4154] LXXI.621)  
Abstracts Returns of Wrecks and Casualties on Coasts of the UK 1883-84 (1884-85 [C.4493] LXX.421)  
List of Vessels Wrecked, Stranded, etc., in or near River Tay, from 1846 to 1865. PP Abstracts Returns of Wrecks and Casualties on Coasts of the UK 1866 (1867 [3901] LXIV.227)

Return of Shipwrecks on the Coast of Scotland (1836 (232) XLV.299)  
 Return of all shipwrecks on the Skerrynore Rock near the island of Tiree or within 20 miles from 1st January 1801(not found)  
 Report of joint committee of the Admiralty and the Board of Trade on floating derelicts. Appendix F. List of British vessels totally lost through striking floating or submerged wreckage during the ten years end 30 June 1893 (1894 LXXVI.97)  
 Abstracts of Shipping Casualties on Coasts, or in Rivers and Harbours of the UK July 1884-85 (1887 [C.5094] LXXIV.247)  
 Abstracts of Shipping Casualties on Coasts, or in Rivers and Harbours of the UK July 1885-86 (1887 [C.5196] LXXIV.449)  
 Abstracts of Shipping Casualties on Coasts, or in Rivers and Harbours of the UK July 1886-87 (1888 [C.5479] XC.735)  
 Abstracts of Shipping Casualties on Coasts, or in Rivers and Harbours of the UK July 1887-88 (1889 [C.5730] LXIX.597)  
 Abstracts of Shipping Casualties on Coasts, or in Rivers and Harbours of the UK July 1889-90 (1890-91 [C.6468] LXXVI.485)  
 Abstracts of Shipping Casualties on Coasts, or in Rivers and Harbours of the UK July 1891-92 (1893-94 [C.7069] LXXX.711)  
 Abstracts of Shipping Casualties on Coasts, or in Rivers and Harbours of the UK July 1891-92 (1893-94 [C.7069] LXXX.711)  
 Abstracts of Shipping Casualties on Coasts, or in Rivers and Harbours of the UK July 1892-93 (1894 [C.7324] LXXVI.505)  
 Abstracts of Shipping Casualties on Coasts, or in Rivers and Harbours of the UK July 1893-94 (1895 [C.7858] LXXXVII.327)  
 Abstracts of Shipping Casualties on Coasts, or in Rivers and Harbours of the UK July 1895-96 (1897 [C.8453] LXXVIII.693)  
 Abstracts of Shipping Casualties on Coasts, or in Rivers and Harbours of the UK July 1894-95 (1896 [C.8247] LXXV.489)  
 Abstracts of Shipping Casualties on Coasts, or in Rivers and Harbours of the UK July 1896-97 (1898 [C.8917] LXXXVIII.401)  
 Abstracts of Shipping Casualties on Coasts, or in Rivers and Harbours of the UK July 1897-98 (1899 [C.9384] LXXXVII.409)  
 Abstracts of Shipping Casualties on Coasts, or in Rivers and Harbours, of UK July 1898-99 (1900 (339) LXXVII.529)  
 Abstracts of Shipping Casualties on Coasts, or in Rivers and Harbours, of UK July 1898-99 (1900 [Cd. 318] LXXVII.531)  
 Return of Timber-laden ships reported to Bd. of Trade as Foundered or Missing 1873-89 (1890 [C.6087] LXVI.237)  
 PP Report and Evidence of Inquiry into Loss of Life from Shipwreck at or near Wick 1877 (94) LXXV.157

### **Lloyd's List**

New Lloyd's List, Tuesday 4 January 1785 No. 1635 - Friday 30 December 1785 No. 1738  
 New Lloyd's List, Tuesday 3 January 1786 No. 1739 - Friday 29 December 1786, No. 1842  
 New Lloyd's List, Tuesday 9 January 1787 No. 1845 - Friday 28 December 1787, No. 1945  
 New Lloyd's List, Tuesday 2 January 1787 No. 1843 - Tuesday 30 December 1788 No. 2051  
 Lloyd's List, Friday 2 January 1789 No. 2052 - December 30 1789 No. 2155  
 Lloyd's List, Friday 1 January 1790 No. 2156 - Tuesday 28 December 1790 No. 2259  
 Lloyd's List, Tuesday 4 January 1791 No. 2261 - Friday 30 December 1791 No. 2364  
 Lloyd's List, Tuesday 3 January 1792 No. 2363 - Friday 28 December 1792 No. 2466  
 Lloyd's List, Tuesday 1 January 1793 No. 2467 - Friday 27 December 1793 No. 2572  
 Lloyd's List, Tuesday December 31 1793 No. 2573 - Tuesday December 30 1794 No. 2677  
 Lloyd's List, Friday January 2 1795 No. 2678 - Tuesday December 29 1795 No. 2780  
 Lloyd's List, Friday January 1 1796 No. 2781 - Friday December 30 1796 No. 2885  
 Lloyd's List, Tuesday January 3 1797 No. 2886 - Friday December 29 1796 No. 2977  
 Lloyd's List, Tuesday January 2 1798 No. 2978 - Friday December 28 1798 No. 3048

Lloyd's List, Tuesday January 1 1799 No. 3049 - Tuesday December 31 1799 No. 4011  
 LL, No. 4012, London, Friday January 3 1800 - No. 4115, London, Tuesday December 30 1800  
 LL, No. 4116, London, Friday January 2 1801 - No. 4216, London, Tuesday December 29 1801  
 LL, No. 4218, London, Tuesday January 5 1802 - No. 4312, London, Friday December 31 1802  
 LL, No. 4217, London, Friday January 1 1801(?) - No. 4415, London, Friday December 30 1803  
 LL, No. 4416, London, Tuesday January 3 1804 - No. 4440, London, Friday March 30 1804  
 LL, No. 4440, London, Friday March 30 1804 - No. 1478, London, Friday December 28 1804  
 LL, No. 4179, London, Tuesday January 1 1805 - No. 4284, London, Tuesday December 31 1805  
 LL, No. 4072, London, Tuesday August 12 1806 - No. 4113, London, Tuesday December 30 1806  
 LL, No. 4114, London, Friday January 2 1807 - No. 4215, London, Tuesday December 29 1807  
 LL, No. 4216, London, Friday January 1 1808 - No. 4314, London, Friday December 30 1808  
 LL, No. 4319, London, Tuesday January 17 1809 - No. 4342, London, Friday April 7 1809  
 LL, No. 4343, London, Tuesday April 11 1809 - No. 4418, London, Friday December 29 1809  
 LL, No. 4419, London, Tuesday January 2 1810 - No. 4523, London, Friday December 28 1810  
 LL, No. 4524, London, Tuesday January 1 1811 - No. 4528, London, Tuesday January 15 1811  
 LL, No. 4529, London, Friday January 18 1811 - No. 4626, London, Tuesday December 31 1811  
 LL, No. 4627, London, Friday January 3 1812 - No. 4731, London, Friday December 25 1812  
 LL, No. 4733, London, Friday January 1 1813 - No. 4833, London, Friday December 31 1813  
 LL, No. 4834, London, Tuesday January 4 1814 - LL, London, Tuesday March 29 1814  
 Stopped volume numbers at 4853 (Friday March 18 1814)  
 LL, London, Friday April 1 1814 - No. 4934, LL, London, Friday December 30 1814  
 Volume numbers restarted No 4920 Friday November 4 1814  
 LL, No. 4935, London, Tuesday January 3 1815 - No. 5035, London, Friday December 29 1815  
 LL, No. 5036, London, Tuesday January 2 1816 - No. 5139, London, Tuesday December 31 1816  
 LL, No. 5140, London, Friday January 3 1817 - No. 5241, London, Tuesday December 30 1817  
 LL, No. 5242, London, Friday January 2 1818 - No. 5347, London, Tuesday December 29 1818  
 LL, No. 5348, London, Friday January 1 1819 - No. 5452, London, Friday December 31 1819  
 LL, No. 5453, London, Tuesday January 4 1820 - No. 5555, London, Friday December 29 1820  
 LL, No. 5556, London, Tuesday January 2 1821 - No. 5637, London, Friday October 19 1821  
 LL, No. 5637, London, Friday October 19 1821 - LL, No. 5649, London, Friday November 30 1821  
 LL, No. 5650, London, Tuesday December 4 1821 - LL, No. 5657, London, Friday December 28 1821  
 LL, No. 5658, London, Tuesday January 1 1822 - LL, No. 5764, London, Tuesday December 31 1822  
 LL, No. 5765, London, Friday January 3 1823 - LL, No. 5770, London, Tuesday January 21 1823  
 LL, No. 5771, London, Friday January 24 1823 - LL, No. 5868, London, Tuesday December 30 1823  
 LL, No. 5869, London, Friday January 2 1824 - LL, No. 5973, London, Friday December 31 1824  
 LL, No. 5974, London, Tuesday January 4 1825 - LL, No. 5980, London, Tuesday January 25 1825  
 LL, No. 5981, London, Friday January 28 1825 - LL, No. 6077, London, Friday December 30 1825  
 LL, No. 6078, London, Tuesday January 3 1826 - LL, No. 6181, London, Friday December 29 1826  
     Vols 6171, 6172  
 LL, No. 6182, London, Tuesday January 2 1827 - LL, No. 6285, London, Friday December 28 1827  
     Vols 6188, 6189, 6191, 6268, 6270  
 LL, No. 6286, London, Tuesday January 1 1828 - LL, No. 6390, London, Tuesday December 30 1828  
     Vols 6387, 6388  
 LL, No. 6391, London, Friday January 2 1829 - No. 6493, London, Thursday December 24 1829  
     Vols 6494  
 LL, No. 6495, London, Friday January 1 1830 - LL, No. 6598, London, Tuesday December 28 1830  
 LL, No. 6600, London, Tuesday January 4 1831 - LL, No. 6703, London, Friday December 30 1831  
 LL, No. 6704, London, Tuesday January 3 1832  
 LL, No. 6808, London, Tuesday January 1 1833 - LL, No. 6824, London, Tuesday February 26 1833  
 LL, No. 6825, London, Friday March 1 1833 - LL, No. 6912, London, Tuesday December 31 1833  
 LL, No. 6913, London, Friday January 3 1834 - LL, No. 7016, London, Tuesday December 30 1834  
 LL, No. 7017, London, Friday January 2 1835 - LL, No. 7098, London, Tuesday October 13 1835  
 LL, No. 7099, London, Friday October 16 1835 - LL, No. 7120, London, Tuesday December 29 1835  
 LL, No. 7121, London, Friday January 1 1836 - LL, No. 7130, London, Tuesday February 2 1836  
 LL, No. 7131, London, Friday February 5 1836 - LL, No. 7225, London, Friday December 30 1836  
 LL, No. 7226, London, Tuesday January 3 1837 - LL, No. 7433, London, Saturday December 30 1837

LL, No. 7434, London, Monday January 1 1838 - LL, No. 7488, London, Monday March 5 1838  
LL, No. 7489, London, Tuesday March 6 1838 - LL, No. 7743, London, Monday December 31 1838  
LL, No. 7744, London, Tuesday January 1 1839 - LL, No. 7764, London, Thursday January 24 1839  
LL, No. 7765, London, Friday January 25 1839 - LL, No. 7897, London, Saturday June 29 1839  
LL, No. 7898, London, Monday July 1 1839 - LL, No. 8054, London, Tuesday December 31 1839  
LL, No. 8055, London, Wednesday January 1 1840 - LL, No. 8062, London, Thursday January 9 1840  
LL, No. 8063, London, Friday January 10 1840 - LL, No. 8366, London, Thursday December 31 1840  
LL, No. 8367, London, Friday January 1 1841 - LL, No. 8677, London, Friday December 31 1841  
LL, No. 8678, London, Saturday January 1 1842 - LL, No. 8989, London, Saturday December 31 1842  
LL, No. 8990, London, Monday January 2 1843 - LL, No. 9299, London, Saturday December 30 1843  
LL, No. 9300, London, Monday January 1 1844 - LL, No. 9368, London, Wednesday March 20 1844  
LL, No. 9369, London, Thursday March 21 1844 - LL, No. 9610, London, Tuesday December 31 1844  
LL, No. 9611, London, Wednesday January 1 1845 - LL, No. 9874, London, Wednesday November 5  
1845  
LL, No. 9874, London, Tuesday November 4 1845 - LL, No. 9921, London, Wednesday December 31  
1845  
LL, No. 9922, London, Thursday January 1 1846 - LL, No. 10,122, London, Monday August 24 1846  
LL, No. 10,123, London, Tuesday August 25 1846 - LL, No. 10,232, London, Thursday December 31  
1846  
LL, No. 10,233, London, Friday January 1 1847 - LL, No. 10,319, London, Wednesday April 14 1847  
LL, No. 10,319, London, Wednesday April 14 1847 - LL, No. 10,385, London, Wednesday June 30 1847  
LL, No. 10,386, London, Thursday July 1 1847 - LL, No. 10,542, London, Friday December 31 1847  
LL, No. 10,543, London, Saturday January 1 1848 - LL, No. 10,563, London, Tuesday January 25 1848  
LL, No. 10,564, London, Wednesday January 26 1848 - LL, No. 10,847, London, Friday December 22  
1848  
LL, No. 10,848, London, Saturday December 23 1848 - LL, No. 10,853, London, Saturday December 30  
1848  
LL, No. 10,854, London, Monday January 1 1849 - LL, No. 11,093, London, Monday October 8 1849  
LL, No. 11,094, London, Tuesday October 9 1849 - LL, No. 11,163, London, Monday December 31 1849  
LL, No. 11,164, London, Tuesday January 1 1850 - LL, No. 11,252, London, Monday April 15 1850  
LL, No. 11,253, London, Tuesday April 16 1850 - LL, No. 11,445, London, Tuesday November 26 1850  
LL, No. 11,446, London, Wednesday November 27 1850 - LL, No. 11,475, London, Tuesday December  
31 1850  
LL, No. 11,476, London, Thursday January 2 1851 - LL, No. 11,783, London, Monday December 29  
1851  
LL, No. 11,786, London, Thursday January 1 1852 - LL, No. 12,097, London, Friday December 31 1852  
LL, No. 12,098, London, Saturday January 1 1853 - LL, No. 12,371, London, Thursday November 17  
1853  
LL, No. 12,372, London, Friday November 18 1853 - LL, No. 12,409, London, Saturday December 31  
1853  
LL, No. 12,410, London, Monday January 2 1854 - LL, No. 12,505, London, Monday April 24 1854  
LL, No. 12,506, London, Tuesday April 25 1854 - LL, No. 12,718, London, Saturday December 30 1854  
Vol. 12,713  
Vol. 12,717  
LL, No. 12,719, London, Monday January 1 1855 - LL, No. 12,772, London, Saturday March 3 1855  
LL, No. 12,773, London, Monday March 5 1855 - LL, No. 13,028, London, Monday December 31 1855  
LL, No. 13,029, London, Tuesday January 1 1856 - LL, No. 13,065, London, Tuesday February 12 1856  
LL, No. 13,066, London, Wednesday February 13 1856 - LL, No. 13,219, London, Tuesday August 12  
1856  
LL, No. 13,220, London, Wednesday August 13 1856 - LL, No. 13,358, London, Thursday January 22  
1857  
LL, No. 13,359, London, Friday January 23 1857 - LL, No. 13,390, London, Saturday February 28 1857  
LL, No. 13,391, London, Monday March 2 1857 - LL, No. 13,441, London, Thursday April 30 1857  
LL, No. 13,442, London, Friday May 1 1857 - LL, No. 13,649, London, Thursday December 31 1857  
LL, No. 13,650, London, Friday January 1 1858 - LL, No. 13,735, London, Monday April 12 1858  
LL, No. 13,736, London, Tuesday April 13 1858 - LL, No. 13,891, London, Monday October 11 1858



LL, No. 13,892, London, Tuesday October 12 1858 - LL, No. 13,960, London, Friday December 31 1858  
LL, No. 13,961, London, Saturday January 1 1859 - LL, No. 14,028, London, Monday March 21 1859  
LL, No. 14,028, London, Monday March 21 1859 - LL, No. 14,059, London, Wednesday April 27 1859  
LL, No. 14,060, London, Thursday April 28 1859 - LL, No. 14,206, London, Saturday October 15 1859  
LL, No. 14,206, London, Saturday October 15 1859 - LL, No. 14,272, London, Saturday December 31 1859  
LL, No. 14,273, London, Monday January 2 1860 - LL, No. 14,315, London, Monday February 20 1860  
LL, No. 14,316, London, Tuesday February 21 1860 - LL, No. 14,427, London, Saturday June 30 1860  
LL, No. 14,428, London, Monday July 2 1860 - LL, No. 14,513, London, Tuesday October 9 1860  
LL, No. 14,514, London, Wednesday October 10 1860 - LL, No. 14,583, London, Monday December 31 1860  
LL, No. 14,584, London, Tuesday January 1 1861 - LL, No. 14,640, London, Thursday March 7 1861  
LL, No. 14,641, London, Friday March 8 1861 - LL, No. 14,776, London, Wednesday August 14 1861  
LL, No. 14,777, London, Thursday August 15 1861 - LL, No. 14,885, London, Thursday, December 19 1861  
LL, No. 14,886, London, Friday, December 20 1861 - LL, No. 14,894, London, Saturday, December 31 1861  
LL, No. 14,892, London, Wednesday, January 1 1862 - LL, No. 15,048, London, Monday, June 30 1862  
LL, No. 15,049, London, Tuesday, July 1 1862 - LL, No. 15,151, London, Tuesday, October 28 1862  
LL, No. 15,152, London, Wednesday, October 29 1862 - LL, No. 15,228, London, Tuesday, January 27 1863  
LL, No. 15,229, London, Wednesday, January 28 1863 - LL, No. 15,290, London, Monday, April 13 1863  
LL, No. 15,291, London, Tuesday, April 14 1863 - LL, No. 15,399, London, Tuesday, August 18 1863  
LL, No. 15,400, London, Wednesday, August 19 1863 - LL, No. 15,464, London, Monday, November 2 1863  
LL, No. 15,465, London, Tuesday, November 3 1863 - LL, No. 15,492, London, Friday, December 4 1863  
LL, No. 15,493, London, Saturday, December 5 1863 - LL, No. 15,514, London, Thursday, December 31 1863  
LL, No. 15,515, London, Friday, January 1 1864 - LL, No. 15,555, London, Wednesday, February 17 1864  
LL, No. 15,556, London, Thursday, February 18 1864 - LL, No. 15,591, London, Thursday, March 31 1864  
LL, No. 15,592, London, Friday, April 1 1864 - LL, No. 15,669, London, Thursday, June 30 1864  
LL, No. 15,670, London, Friday, July 1 1864 - LL, No. 15,774, London, Monday, October 31 1864  
LL, No. 15,775, London, Tuesday, November 1 1864 - LL, No. 15,827, London, Saturday, December 31 1864  
LL, No. 15,828, London, Monday, January 2 1865 - LL, No. 15,981, London, Friday, June 30 1865  
LL, No. 15,982, London, Saturday, July 1 1865 - LL, No. 16,060, London, Saturday, September 30 1865  
LL, No. 16,061, London, Monday, October 2 1865 - LL, No. 16,138, London, Monday, January 1 1866  
LL, No. 16,139, London, Tuesday, January 2 1866 - LL, No. 16,212, London, Wednesday, March 28 1866  
LL, No. 16,213, London, Thursday, March 29 1866 - LL, No. 16,292, London, Saturday, June 30 1866  
LL, No. 16,293, London, Monday, July 2 1866 - LL, No. 16,431, London, Monday, December 10 1866  
LL, No. 16,432, London, Tuesday, December 11 1866 - LL, No. 16,448, London, Monday, December 31 1866  
LL, No. 16,449, London, Tuesday, January 1 1867 - LL, No. 16,493, London, Thursday, February 21 1867  
LL, No. 16,494, London, Friday, February 22 1867 - LL, No. 16,520, London, Monday, March 25 1867  
LL, No. 16,521, London, Tuesday, March 26 1867 - LL, No. 16,530, London, Friday, April 5 1867  
LL, No. 16,531, London, Saturday, April 6 1867 - LL, No. 16,693, London, Monday, October 14 1867  
LL, No. 16,692, London, Saturday, October 12 1867 - LL, No. 16,751, London, Friday, December 20 1867  
LL, No. 16,752, London, Saturday, December 21 1867 - LL, No. 16,785, London, Thursday, January 30 1868  
LL, No. 16,786, London, Friday, January 31 1868 - LL, No. 16,828, London, Friday, March 20 1868  
LL, No. 16,829, London, Saturday, March 21 1868 - LL, No. 16,884, London, Tuesday, May 26 1868  
LL, No. 16,885, London, Wednesday, May 27 1868 - LL, No. 17,062, London, Saturday, December 19 1868  
LL, No. 17,063, London, Monday, December 21 1868 - LL, No. 17,071, London, Thursday, December 31 1868

LL, No. 17,072, London, Friday, January 1 1869 - LL, No. 17,122, London, Monday, March 1 1869  
LL, No. 17,123, London, Tuesday, March 2 1869 - LL, No. 17,157, London, Monday, April 12 1869  
LL, No. 17,158, London, Tuesday, April 13 1869 - LL, No. 17,246, London, Saturday, July 24 1869  
LL, No. 17,247, London, Monday, July 25 1869 - LL, No. 17,382, London, Friday, December 31 1869  
LL, No. 17,383, London, Saturday, January 1 1870 - LL, No. 17,429, London, Friday, February 25 1870  
LL, No. 17,430, London, Saturday, February 26 1870 - LL, No. 17,588, London, Wednesday, August 31 1870  
LL, No. 17,589, London, Thursday, September 1 1870 - LL, No. 17,631, London, Thursday, October 20 1870  
LL, No. 17,632, London, Friday, October 21 1870 - LL, No. 17,693, London, Saturday, December 31 1870  
LL, No. 17,694, London, Monday, January 2 1871 - LL, No. 17,741, London, Saturday, February 25 1871  
LL, No. 17,742, London, Monday, February 27 1871 - LL, No. 17,794, London, Saturday, April 29 1871  
LL, No. 17,795, London, Monday, May 1 1871 - LL, No. 17,953, London, Thursday, November 2 1871  
LL, No. 17,954, London, Friday, November 3 1871 - LL, No. 18,002, London, Saturday, December 30 1871  
Lloyd's List, Monday January 1 1872 No. 18,003 - Feb 1872  
Lloyd's List, Thursday February 1872  
Lloyd's List, March 1872  
Lloyd's List, April 1872  
Lloyd's List, May 1872  
Lloyd's List, June 1872  
Lloyd's List, July 1872  
Lloyd's List, August, 1872  
Lloyd's List, September, 1872  
Lloyd's List, October, 1872  
Lloyd's List, November, 1872  
Lloyd's List, December, 1872  
Lloyd's List, January, 1873  
Lloyd's List, February, 1873  
Lloyd's List, March, 1873  
Lloyd's List, April, 1873  
Lloyd's List, May, 1873  
Lloyd's List, June, 1873  
Lloyd's List, July, 1873  
Lloyd's List, August, 1873  
Lloyd's List, September, 1873  
Lloyd's List, October, 1873  
Lloyd's List, November, 1873  
Lloyd's List, December, 1873  
Lloyd's List, January, 1874  
Lloyd's List, February, 1874  
Lloyd's List, March 1874  
Lloyd's List, April 1874  
Lloyd's List, May 1874  
Lloyd's List, June 1874  
Lloyd's List, July 1874  
Lloyd's List, August 1874  
Lloyd's List, September 1874  
Lloyd's List, October 1874  
Lloyd's List, November 1874  
Lloyd's List, December 1874  
Lloyd's List, January 1875  
Lloyd's List, February 1875  
Lloyd's List, March 1875  
Lloyd's List, April 1875  
Lloyd's List, May 1875

Lloyd's List June 1875  
Lloyd's List August 1875  
Lloyd's List September 1875  
Lloyd's List, October, 1875  
Lloyd's List, November, 1875  
Lloyd's List, December, 1875  
Lloyd's List, January, 1876  
Lloyd's List, February, 1876  
Lloyd's List, March, 1876  
Lloyd's List, April, 1876  
Lloyd's List, May, 1876  
Lloyd's List, June, 1876  
Lloyd's List, July, 1876  
Lloyd's List, August, 1876  
Lloyd's List, September, 1876  
Lloyd's List, October, 1876  
Lloyd's List, November, 1876  
Lloyd's List, December, 1876  
Lloyd's List, January 1877  
Lloyd's List, February, 1877  
Lloyd's List, March, 1877  
Lloyd's List, April, 1877  
Lloyd's List, May, 1877  
Lloyd's List, June, 1877  
Lloyd's List, July, 1877  
Lloyd's List, August, 1877  
Lloyd's List, September, 1877  
Lloyds List, October, 1877  
Lloyd's List, November, 1877  
Lloyd's List, December, 1877  
Lloyd's List, January, 1878  
Lloyd's List, February, 1878  
Lloyd's List, March, 1878  
Lloyd's List, April, 1878  
Lloyd's List, May, 1878  
Lloyd's List, June, 1878  
Lloyd's List, July, 1878  
Lloyd's List, August, 1878  
Lloyd's List, September, 1878  
Lloyd's List, October, 1878  
Lloyd's List, November, 1878  
Lloyd's List, December, 1878  
Lloyd's List, January, 1879  
Lloyd's List, February, 1879  
Lloyd's List, March, 1879  
Lloyd's List, April, 1879  
Lloyd's List, May, 1879  
Lloyd's List, June, 1879  
Lloyd's List, July, 1879  
Lloyd's List, August, 1879  
Lloyd's List, September, 1879  
Lloyd's List, October, 1879  
Lloyd's List, November, 1879  
Lloyd's List, December, 1879  
Lloyd's List, January, 1880  
Lloyd's List, February, 1880

Lloyd's List, March, 1880  
Lloyd's List, April, 1880  
Lloyd's List, May, 1880  
Lloyd's List, June, 1880  
Lloyd's List, July, 1880  
Lloyd's List, August, 1880  
Lloyd's List, September, 1880  
Lloyd's List, October, 1880  
Lloyd's List, November, 1880  
Lloyd's List, December, 1880  
Lloyd's List, January, 1881  
Lloyd's List, February, 1881  
Lloyd's List, March, 1881  
Lloyd's List, April, 1881  
Lloyd's List, May, 1881  
Lloyd's List, June, 1881  
Lloyd's List, July, 1881  
Lloyd's List, August, 1881  
Lloyd's List, September 1881  
Lloyd's List, October, 1881  
Lloyd's List, November, 1881  
Lloyd's List, December, 1881  
LL, No. 21,426, London, Monday, January 1 1883 - LL, No. 21,442, London, Friday, January 19 1883  
LL, No. 21,443, London, Saturday, January 20 1883 - LL, No. 21,471, London, Thursday, February 22 1883  
LL, No. 21,472, London, Friday, February 23 1883 - LL, No. 21,492, London, Monday, March 19 1883  
LL, No. 21,493, London, Tuesday, March 20 1883 - LL, No. 21,580, London, Saturday, June 30 1883  
LL, No. 21,581, London, Monday, July 2 1883 - Source, Casualties &c., LL, No. 21,633, London, Friday, August 31 1883  
LL, No. 21,634, London, Saturday, September 1 1883 - LL, No. 21,685, London, Wednesday, October 31 1883  
LL, No. 21,686, London, Thursday, November 1 1883 - LL, No. 21,736, London, Monday, December 31 1883  
LL, No. 21,737, London, Tuesday, January 1 1884 - LL, No. 21,806, London, Friday, March 21 1884  
LL, No. 21,807, London, Saturday, March 22 1884 - LL, No. 21,889, London, Friday June 27 1884  
Shipping & Mercantile Gazette and LL, No. 14,622, London, Tuesday July 1 1884 - Maritime Intelligence, Shipping & Mercantile Gazette and LL, No. 14,700, London, Tuesday September 30 1884  
Shipping & Mercantile Gazette and LL, No. 14,701, London, Wednesday October 1 1884 - Shipping & Mercantile Gazette and LL, No. 14,727, London, Friday October 31 1884  
Shipping & Mercantile Gazette and LL, No. 14,728, London, Saturday November 1 1884 - Shipping & Mercantile Gazette and LL, No. 14,778, London, Wednesday December 31 1884

## Appendix II: Volume numbers of LL not included in data entry exercise

Volumes not available either at the National Museum of Scotland or the Guildhall Museum, London.

1826	Vol 6175
1832	Vols 6708
	Vol 6723
	Vol 6726
	Vol 6741
	Vol 6747
	Vol 6759
	Vol 6775
	Vol 6791
	Vol 6806
1835	Vols 7031
	Vol 7069
1836	Vols 7135
	Vol 7149
	Vol 7200
	Vol 7216
	Vol 7224
1838	Vols 7682
1842	Vol. 8771
1846	Vol. 9965
1847	Vol. 10,238
1848	Vol. 10,567
	Vol. 10,668
	Vol. 10,678
1849	Vol. 10,960
	Vol. 11,010
1850	Vol. 11,245
1851	Vol. 11,557
	Vol. 11,560
	Vol. 11,736
	Vol. 11,757
	Vol. 11,780
	Vols. 11,784 - 5
1852	Vol. 11,909
	Vol. 11,988
	Vol. 12,004
	Vol. 12,021
	Vol. 12,023
	Vol. 12,025
	Vol. 12,027 - 30
	Vol. 12,033
	Vol. 12,035 - 40
	Vol. 12,043
	Vol. 12,057
	Vol. 12,059
	Vol. 12,068
	Vol. 12,079
	Vol. 12,082
1853	Vol. 12,167
	Vol. 12,174

Vol. 12,176  
Vol. 12,181  
Vol. 12,187  
Vol. 12,198  
Vols. 12,200 - 201  
Vols. 12,203 - 212  
Vols. 12,216 - 218  
Vol. 12,220  
Vol. 12,222  
Vol. 12,224  
Vols. 12,242 - 245  
Vol. 12,260  
Vols. 12,267 - 268  
Vol. 12,278  
Vol. 12,285  
Vol. 12,290  
Vol. 12,301 - 304  
Vol. 12,313  
Vol. 12,333  
Vol. 12,344  
Vol. 12,347  
Vol. 12,358  
Vol. 12,367  
1865 Vol. 15,828  
1866 Vol. 16,354  
1872 Tuesday October 22  
    Friday October 25  
    Wednesday November 6  
    Wednesday November 27  
1880 Tuesday June 8, pages missing