



Scottish Universities Environmental Research Centre

Director: Professor R M Ellam

Rankine Avenue, Scottish Enterprise Technology Park,
East Kilbride, Glasgow G75 0QF, Scotland, UK

Tel: +44 (0)1355 223332 Fax: +44 (0)1355 229898 www.glasgow.ac.uk/suerc

RADIOCARBON DATING CERTIFICATE

14 March 2013

Laboratory Code SUERC-44834 (GU29715)

Submitter Richard Tipping
Biological and Environmental Sciences
School of Natural Sciences
University of Stirling
FK9 4LA

Site Reference Dunragit
Context Reference 5-7cm depth
Sample Reference The Plots 3

Material Soil : Organic-rich clay with herb stems : Humic Acid Dated

$\delta^{13}\text{C}$ relative to VPDB -28.9 ‰

Radiocarbon Age BP 3497 \pm 33

N.B. The above ^{14}C age is quoted in conventional years BP (before 1950 AD). The error, which is expressed at the one sigma level of confidence, includes components from the counting statistics on the sample, modern reference standard and blank and the random machine error.

The calibrated age ranges are determined from the University of Oxford Radiocarbon Accelerator Unit calibration program (OxCal4).

Samples with a SUERC coding are measured at the Scottish Universities Environmental Research Centre AMS Facility and should be quoted as such in any reports within the scientific literature. Any questions directed to the Radiocarbon Laboratory should also quote the GU coding given in parentheses after the SUERC code. The contact details for the laboratory are email g.cook@suerc.gla.ac.uk or telephone 01355 270136 direct line.

Conventional age and calibration age ranges calculated by :-

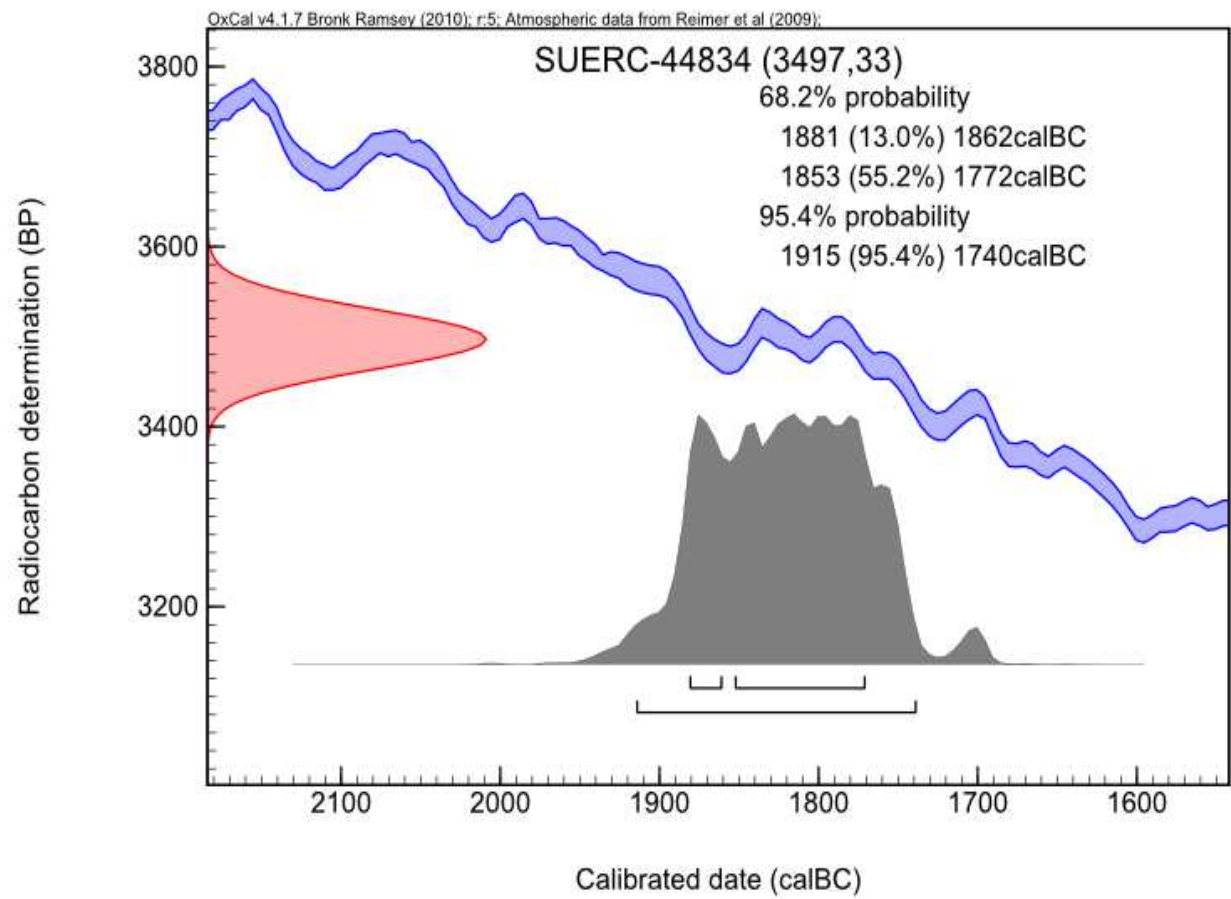
Date :-

Checked and signed off by :-

Date :-



Calibration Plot





Scottish Universities Environmental Research Centre

Director: Professor R M Ellam

Rankine Avenue, Scottish Enterprise Technology Park,
East Kilbride, Glasgow G75 0QF, Scotland, UK

Tel: +44 (0)1355 223332 Fax: +44 (0)1355 229898 www.glasgow.ac.uk/suerc

RADIOCARBON DATING CERTIFICATE

14 March 2013

Laboratory Code SUERC-44834 (GU29715)

Submitter Richard Tipping
Biological and Environmental Sciences
School of Natural Sciences
University of Stirling
FK9 4LA

Site Reference Dunragit
Context Reference 5-7cm depth
Sample Reference The Plots 3

Material Soil : Organic-rich clay with herb stems : Humic Acid Dated

$\delta^{13}\text{C}$ relative to VPDB -28.9 ‰

Radiocarbon Age BP 3497 \pm 33

N.B. The above ^{14}C age is quoted in conventional years BP (before 1950 AD). The error, which is expressed at the one sigma level of confidence, includes components from the counting statistics on the sample, modern reference standard and blank and the random machine error.

The calibrated age ranges are determined from the University of Oxford Radiocarbon Accelerator Unit calibration program (OxCal4).

Samples with a SUERC coding are measured at the Scottish Universities Environmental Research Centre AMS Facility and should be quoted as such in any reports within the scientific literature. Any questions directed to the Radiocarbon Laboratory should also quote the GU coding given in parentheses after the SUERC code. The contact details for the laboratory are email g.cook@suerc.gla.ac.uk or telephone 01355 270136 direct line.

Conventional age and calibration age ranges calculated by :-

Date :-

Checked and signed off by :-

Date :-



Calibration Plot

