

**Report of Archaeological Evaluation  
July 15<sup>th</sup> 2002  
Balloan Field, Inverness  
NH 6700 / 4249**

**By  
Stuart Farrell  
B.A A.I.F.A F.S.A.Scot.  
July 2002**

## Introduction

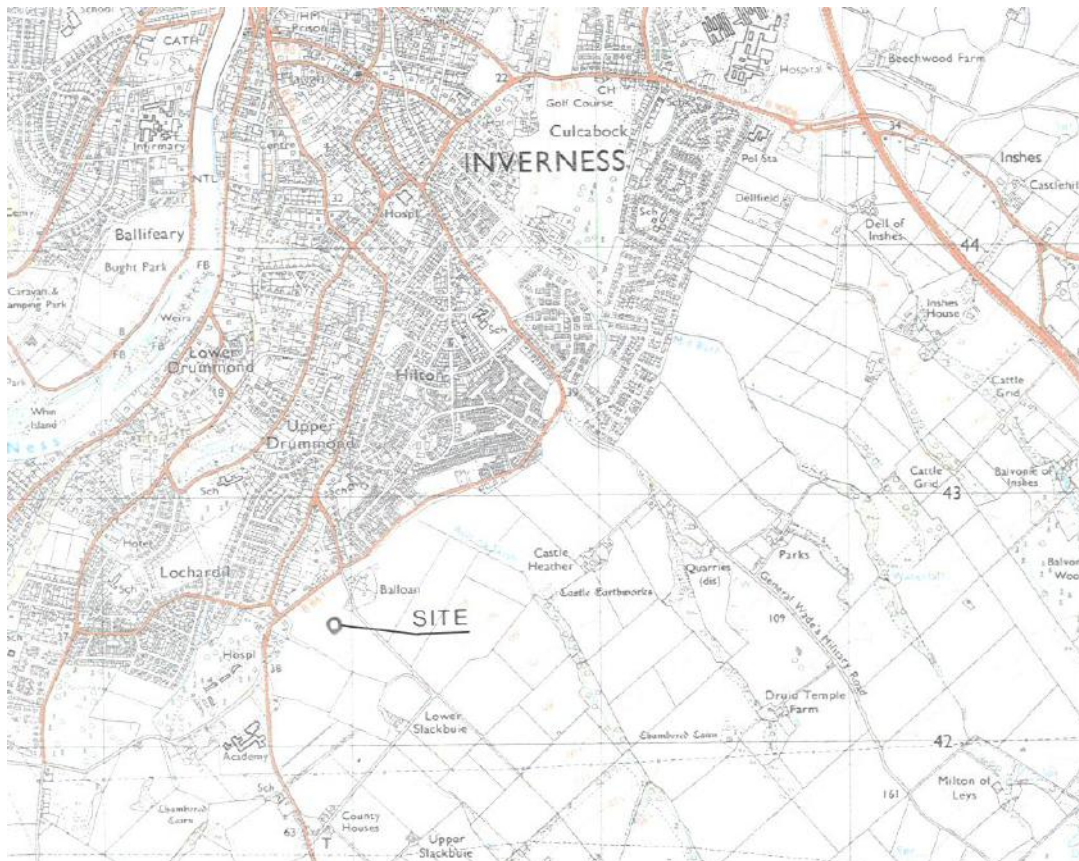
This report is for an archaeological evaluation conducted on behalf of Manda Healthcare Ltd by the author for a development at Balloan Field, Inverness conducted as part of scheduled monument consent.

## Acknowledgements

I would like to thank the following for their help during the work :

- Mr. T Manda, of Manda Healthcare Ltd;
- Dr. N Fojut, of Historic Scotland;
- Staff of Fairview Plant Hire for machining;
- Staff of Highland Council Archaeology Unit.

## Site Location



NOTES  
 Copyright belongs to Manda Inverness Construction Ltd  
 All rights reserved. No part of this publication may be reproduced, stored in a retrieval system, or transmitted in any form or by any means, electronic, mechanical, photocopying, recording, or by any information storage and retrieval system, without the prior written permission of Manda Inverness Construction Ltd.

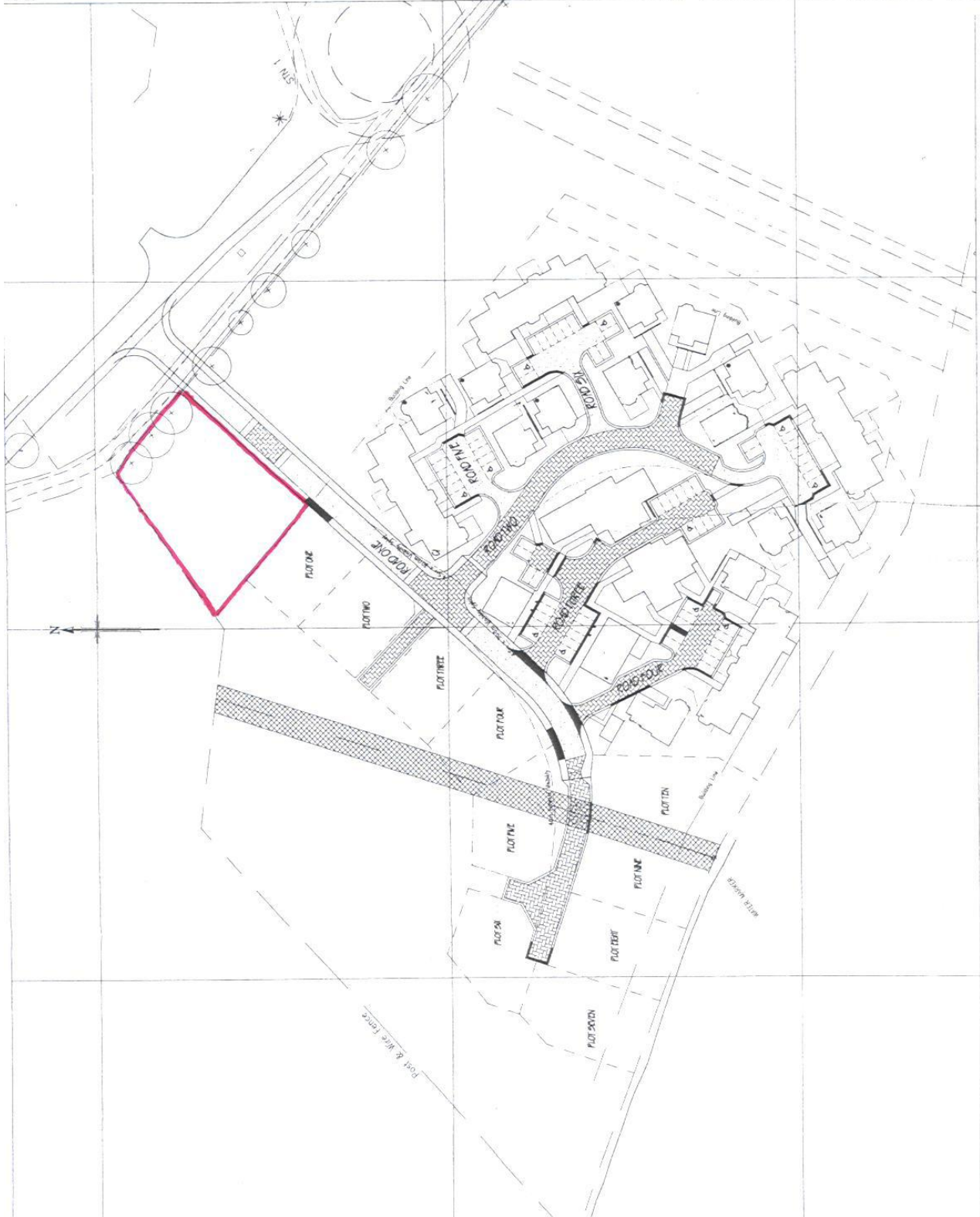
REV	DATE	DESCRIPTION
1	1.12.97	Site layout agreed
A	06.98	Site layout agreed

MANAHEAR ROAD LTD  
 BALLOON FIELDS,  
 HEATHCOTE VILLAGE,  
 SADDLEWELL, INVERNESS  
 GENERAL SITE LAYOUT

Scale: 1:500  
 Date: 21/1/98

MANDA CONSTRUCTION LTD  
 66-70 FAIRFIELD ROAD  
 INVERNESS IV3 5QP  
 Tel: 088 204511 Fax: 01463 201113  
 Email: manda@inverness.com

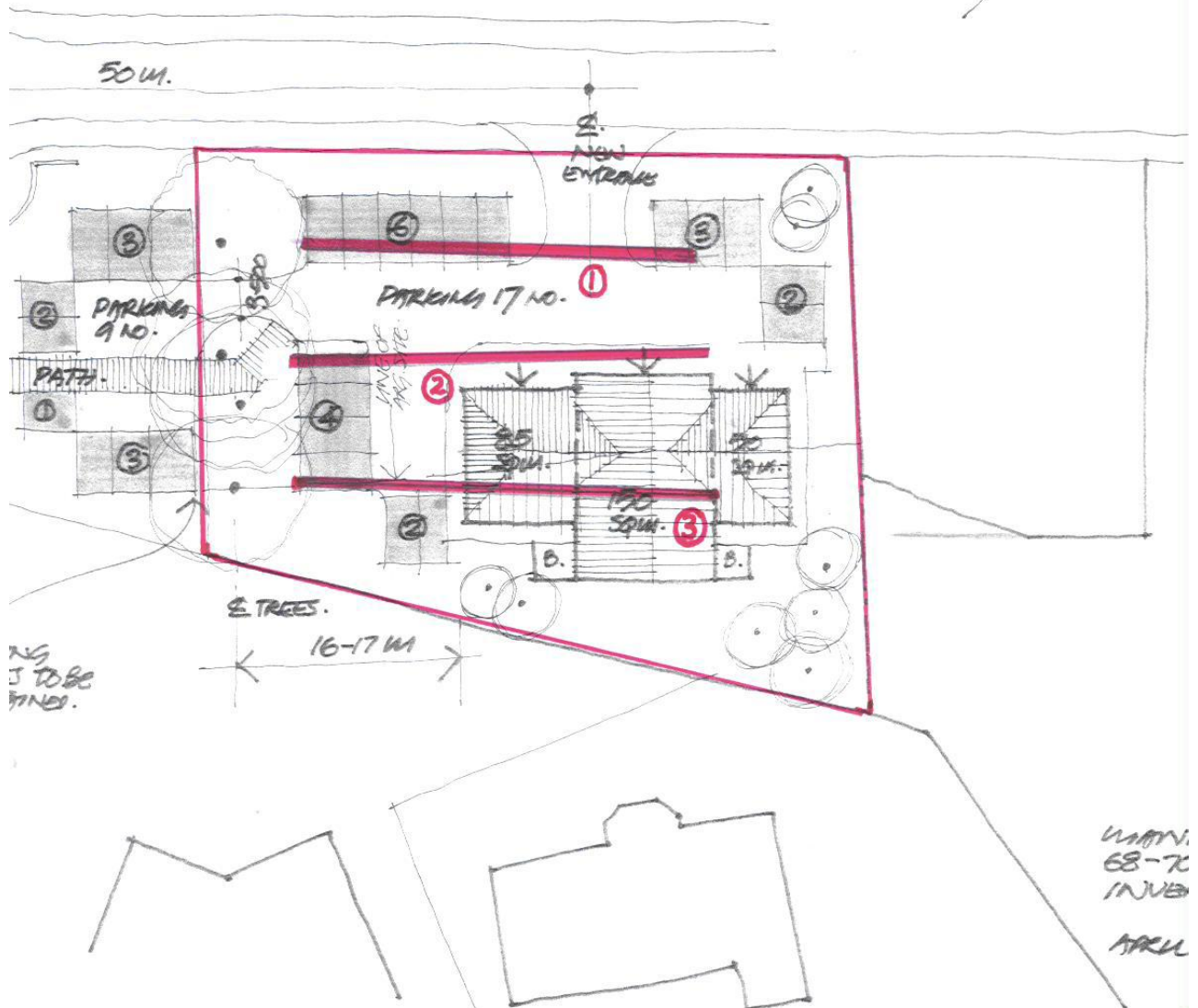
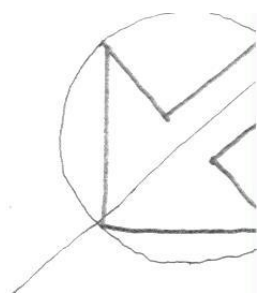
Drawing No: 998/001/002



Area of development.

Location of trenches

AMENDED SHED/PARKING LAYOUT  
(SCALE 1:500)



## Historical Background

The area of the watching brief lies adjacent to a number of recorded archaeological sites, most notably a cropmark site. The following sites lying in the adjacent area to the development are recorded in the National Monuments Record of Scotland:

- NH64SE 37 – NH 6704/4245 – pit circle and ring-ditch cropmark (possible unenclosed settlement) of 7m diameter and 13m respectively. Discovered by aerial photography in 1977. Northeast arc destroyed by road construction and scheduled as an ancient monument in 1991 to an area of 120m NNW-SSE by 50m NNE-SSW. (See photograph over)

No features or deposits were found during trial trenching (centred at NH 670/424) of 3 trenches to an area of 190m<sup>2</sup> to the north side of the cropmark during the construction of the access road to the site in 1994. (Wilson & Moore, 1994). This lies directly to the south of the current area of evaluation.

Previous work in this area has included the following:

- 1990 – 3 areas of excavation in adjacent field at NH 6710/4260 (Wordsworth, 1990) to the east and south of Culduthel Court (formerly Balloan Farm) revealed traces of a gully of a possible ha-ha or garden feature relating to Balloan House.

- 1991 – Area of excavation in adjacent field c.220m to east at NH 6735 / 4271 (Wordsworth, 1991 and 1999) revealed a ring-ditch and enclosure, with finds including a fragment of a shale bracelet dating between the Late Bronze Age to the middle Iron Age.

- 1992 - Trial excavation of 5 trenches at NH 6684/4255 (Wordsworth, 1992) revealed no archaeological deposits or features only glacial fill.

- 1993 – Trial excavation of 4 trenches to north (On site around W. Fraser, Funeral Home) at NH 669 / 426 (Wordsworth, 1993) revealed plough furrows of recent date.

- 1996 – Trial excavation of 5 trenches in adjacent field at NH 6705 / 4260 (Wordsworth, 1996) to the east and south of Culduthel Court (formerly Balloan Farm) revealed traces of a clay flooring of an 18<sup>th</sup> century date.

- 1999 – Watching brief carried out on Phase 1 of this development (Robins, 1999) centred at NH669 / 426 which was related to access road 1 & 2 and house plots to the west of the development site. No archaeological deposits or features were revealed only glacial fill. One possible archaeological feature was deemed as natural.

## **Evaluation Investigation**

The evaluation was carried out in accordance with accepted professional archaeological standards as published by the Institute of Field Archaeologists (IFA 1999). The work was carried out under the direct supervision of the author.

## **Methodology**

3 trenches running east-west were made by a back-acting machine with a straight edged bucket with the natural ground being hand cleaned to expose any features. All machining was directly supervised. The trenches were located to cover most of the proposed development covering a total of 132.8m<sup>2</sup> being 12.3% of the total development area. (Overall area is circa 39.5m NS by 41.5m EW)

Weather on the day of work was generally slightly overcast with sunny periods.

## **Results**

Details of trenches are as follows:

1 – 1.6m by 26.5m with turf, topsoil and subsoil to a depth of 0.65m onto a natural of orange-brown sandy gravels with some yellow-brown sand to west end of trench. No archaeological features or deposits revealed.

2 - 1.6m by 27m with turf, topsoil and subsoil to an average depth of 0.55m onto a natural of some yellow-brown sand. No archaeological features or deposits revealed.

3 - 1.6m by 29.5m with turf, topsoil and subsoil to an average depth of 0.55m onto a natural of yellow-brown sand with some orange-brown sandy gravels to west end of trench. No archaeological features or deposits revealed.

Excavation revealed no archaeological features or deposits only natural ground. Some white glazed pottery of a 19<sup>th</sup>/20<sup>th</sup> century date was occasionally found in the topsoil, possibly from the nearby site of Balloan Farm, but was not retained.

## **Recommendations**

No recommendations with regards to this project are to be proposed.

## **Archive**

Notebook of results and a set of colour slides showing the progress of the work to be deposited with National Monuments Record of Scotland, Edinburgh.

## **References**

IFA (1999) By-laws, Standards and Policy Statements of the Institute of Field Archaeologists. Reading.

National Monuments Record of Scotland CANMORE entries for NH64SE 37, 42, 68, 72

Robins, G (1999) Balloan Fields Healthcare Village Archaeological Watching Brief : Interim Report. Unpublished report, copy held by Highland Council Sites and Monuments Record.

Wilson, G & Moore, H (1994) Report on assessment excavation at Balloan Cottages, Slackbuie Avenue, Inverness. EASE. Edinburgh. Unpublished report, copy held by Highland Council Sites and Monuments Record.

Wordsworth, J (1990) Archaeological excavations at Balloan Farm, Inverness. Unpublished report, copy held by Highland Council Sites and Monuments Record.

Wordsworth, J (1991) Balloan Park, Inverness : The Archaeological assessment of the ring-ditch enclosure and associated features. Historic Scotland. Edinburgh. Unpublished report, copy held by Highland Council Sites and Monuments Record.

Wordsworth, J (1992) Archaeological Assessment at Slackbuie, Inverness. Unpublished report, copy held by Highland Council Sites and Monuments Record.

Wordsworth, J (1993) Slackbuie Avenue, Inverness 1993 : A report on the archaeological examination of this site prior to building construction. Unpublished report, copy held by Highland Council Sites and Monuments Record.

Wordsworth, J (1996) Archaeological trial trenching at Slackbuie Avenue, Inverness. Unpublished report, copy held by Highland Council Sites and Monuments Record.

Wordsworth, J (1999) A later prehistoric settlement at Balloan Park, Inverness. Proceedings of the Society of Antiquaries of Scotland 1999, 129, 239-249.

Stuart Farrell  
39a Park Street  
Fishertown  
Nairn  
IV12 4PP

## **Appendix 1 – Details of Slides**

- 1 – View of site prior to excavation facing east.
- 2 – View of site prior to excavation facing northeast.
- 3 - View of trench 1 facing east upon excavation.
- 4 – ibid.
- 5 – View of trench 1 facing west upon excavation.
- 6 – ibid.
- 7 – View of trench 2 upon excavation facing west.
- 8 – ibid.
- 9 – View of trench 2 upon excavation facing east.
- 10 – ibid.
- 11 – View of trench 3 upon excavation facing west.
- 12 – ibid but facing east.
- 13 – ibid.
- 14 – View of site upon excavation of trenches facing northeast.
- 15 – ibid but facing east.
- 16 – ibid.
- 17 – ibid but facing southeast.
- 18 – ibid but facing east.