

**Report of Rapid Pre-afforestation
Walkover & Desktop Survey
July 2002
Towleys Farm, Aberdeenshire
NJ 602/225 (centred)**

**By
Stuart Farrell
B.A A.I.F.A F.S.A.Scot.
July 2002**

Introduction

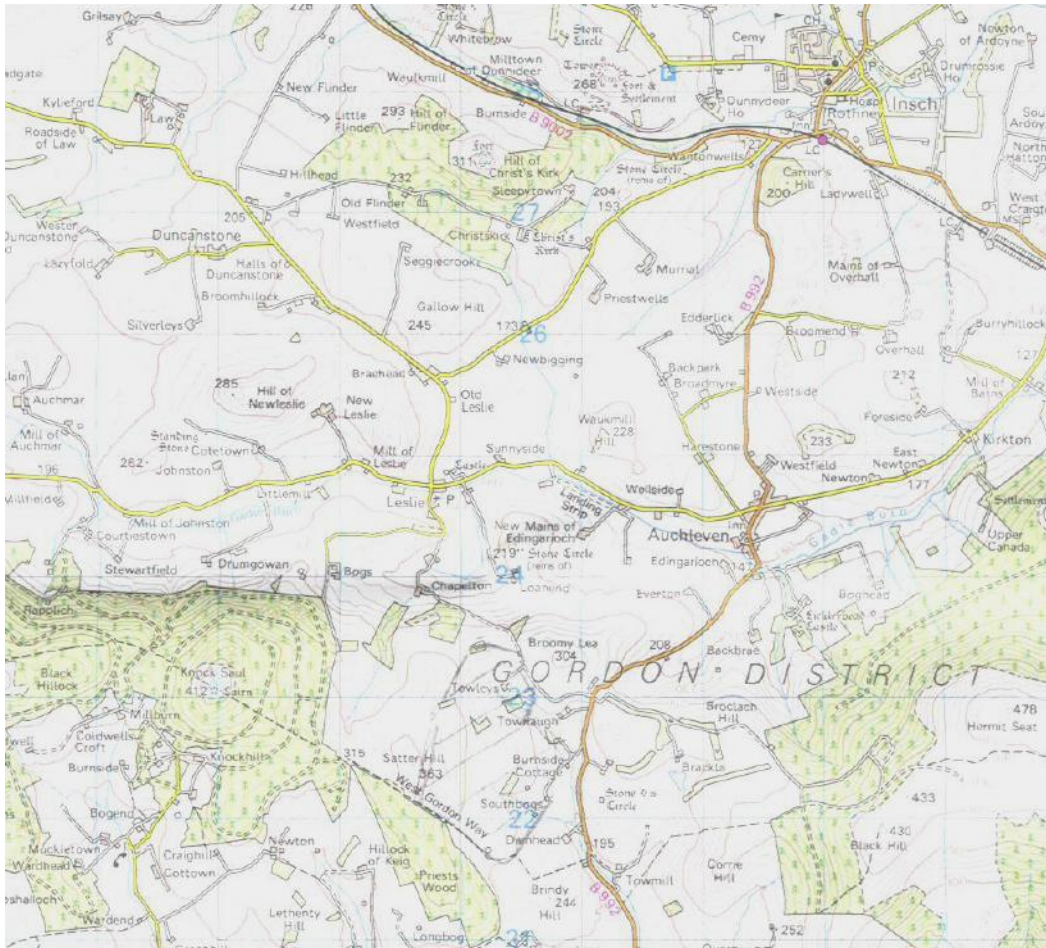
This report is for a desktop and rapid archaeological pre-afforestation survey for a Woodland Farm Scheme conducted by the author for Michael Scutt Bell Ingram Forestry Consultants on behalf of Brdrs Majland Ltd for Towley Farm, Aberdeenshire.

Acknowledgements

I would like to thank the following for their help during the work :

- Mr. D Robertson, of Michael Scutt Bell Ingram Forestry Consultants;
- Staff of the National Monuments Record of Scotland, Edinburgh;
- Mr. K McLaren, of the RCAHMS aerial photograph Unit, Edinburgh;
- Staff of the National Library of Scotland Map Room;
- Staff of Aberdeen City Council Archives;
- Staff of Aberdeenshire Council Archaeology Unit.

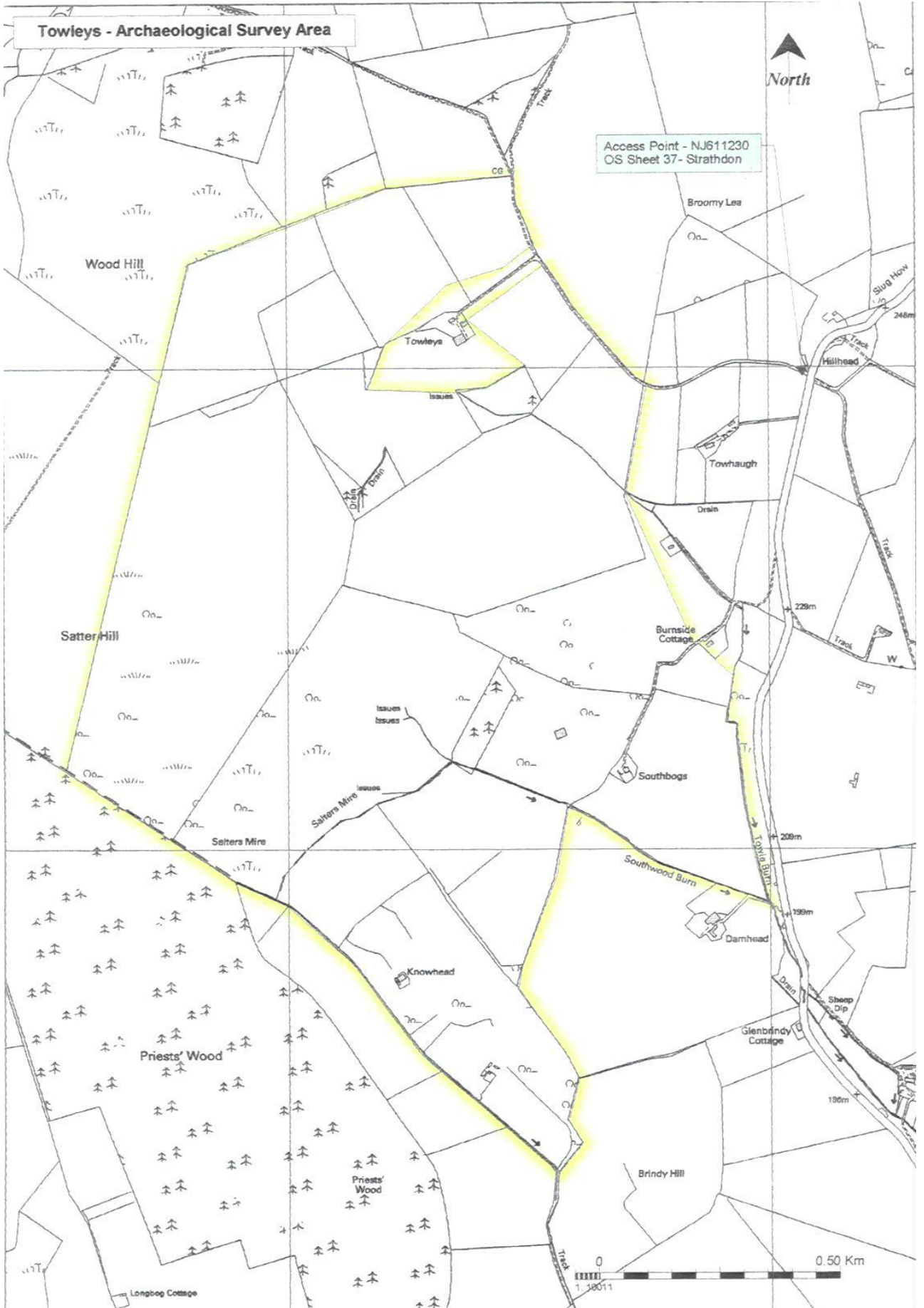
Site Location



Towleys - Archaeological Survey Area



Access Point - NJ611230
OS Sheet 37- Strathdon



Objectives

A rapid walkover survey was conducted to identify those archaeological sites that lie in the area of the proposed Woodland Farm Scheme. (See previous and enclosed map – scale 1:2500)

This followed on a desktop survey of records and to follow the specification of Highland Council Archaeology Unit (See enclosed).

A desktop survey was conducted using the following sources:

- Aberdeenshire Council Sites and Monuments Record;
- National Monuments Record of Scotland CANMORE database, Edinburgh;
- Royal Commission on the Ancient and Historic Monuments of Scotland – aerial photograph collection;
- National Map Library of Scotland, Edinburgh.

Most of the sites located appear on the 1st edition OS map of 1870 (surveyed 1865-7) sheet 53 and the 2nd edition OS map of 1901 (revised 1899) sheet 53 NW. See copy of both to rear.

Recommendations

Recommendation's are given per each site, where recommended.

Field Survey Results

Weather on the day of work (July 26th 2002) was partly cloudy with sunny periods. A walkover was made of all areas of the proposed WGS accessible. (It must be noted that some areas were not easily visible due to long grass)

Two additional archaeological sites were found to the area of the proposed WGS during the walkover survey.

Site Details

Currently the following sites were recorded in the Aberdeenshire Sites and Monuments Record or the National Monuments Record of Scotland CANMORE database to the area of the WGS:

1 – Towleys

NMRS – NJ62SW 93

ASMR – NJ62SW 42

Grid Ref: NJ 6060/2294

Type – Croft

Noted in NMRS as 'Nothing visible of cottage that stood c250m ESE of Towleys Farm. Depicted as roofed on both the 1st and 2nd edition OS maps of 1870 sheet 53 and 1901 sheet 53NW respectively and formed part of a range aligned NW-SE, to the SE a garden. Site visited by RCAHMS May 1999.'

Noted in ASMR as 'foundations visible on aerial photograph of 1977 (BKS NJ62S 2731031 flown 7 July 1977) uncertain if any remains visible on surface.

Aerial photographs from 1946 (RAF 106G/Scot/UK 139/2038 flown 3rd July 1946) visible as roofless ruin, by 1948 (RAF CPE Scot/313/3845) building still unroofed and just visible as rectangular outline. Not visible in 1968 (OS 68/181/006) or 1973 (OS 73/417/172). Not visible on latest aerial photograph of 1988 (OS 16/88/196).

Currently (July 2002) no trace was made of this building during walkover survey, lies in area of recent ploughing and tree planting.

2 – Towleys or Towhaugh

NMRS – NJ62SW 95

ASMR – NJ62SW 43

Grid Ref: NJ 6064/2273

Type – Croft

Noted in NMRS as 'Nothing is visible of cottage that stood 415m SE of Towleys Farm. Depicted as roofed on 1st edition OS of 1870 sheet 53, when accompanied by 2 enclosures to its NW side and a small roofed structure to the NW of its NE end. Still roofed in 1901, sheet 53NW but other features have been removed and a small detached garden has been added on the SE and a small roofed structure directly S of the SW gable.' Site visited by RCAHMS May 1999.

Noted in ASMR as 'Foundations visible on aerial photograph of 1977 (BKS NJ62S 273101 flown 7 July 1977) nothing now visible.'

Aerial photographs from 1948 (RAF CPE Scot/313/3845) show building unroofed visible as rectangular outline. Visible in 1968 (OS 68/181/006) as a rough mound in ploughed field. Partly visible as outline on photograph of 1973 (OS 73/417/172). Not visible on latest aerial photograph of 1988 (OS 16/88/196).

Currently (July 2002) no trace was made of this building during walkover survey, lies in area of recent ploughing and tree planting.

3 – Salters Hill or Southbogs

NMRS – NJ62SW 41

ASMR – NJ62SW 45

Grid Ref: NJ 6019/2245

Type – Building

Noted in NMRS as 'Nothing visible during site visit by RCAHMS 1996. Depicted as unroofed on 1st edition OS of 1870 sheet 53 but not shown on 2nd of 1901 sheet 53NW.'

Noted in ASMR as '1st edition shows building and enclosure at altitude of 270m. Faint traces of footings are visible on aerial photograph of 1977 (BKS NJ62S 2731031 flown 7 July 1977) nothing now visible.'

Aerial photographs from 1948 (RAF CPE Scot/313/3845) show building unroofed visible as rectangular outline. Visible in 1968 (OS 68/181/006) as an irregular mound of earth in ploughed field. Just partly visible as outline on photograph of 1973 (OS 73/417/171). Not visible on latest aerial photograph of 1988 (OS 16/88/196).

Currently (July 2002) no trace was made of this building during walkover survey, lies in area of recent ploughing and tree planting.

4 – Bogside

NMRS – NJ62SW 87

ASMR – NJ62SW 44

Grid Ref: NJ 6015/2221

Type – Croft

Noted in NMRS as 'Nothing visible of the steading of this croft – RCAHMS May 1999, 540m W of Sunnybogs Cottage. Depicted as roofed on both the 1st and 2nd edition OS maps of 1870 and 1901 sheet 53 and 53NW respectively. Of 2 buildings, the N probably a cottage and faced onto a garden immediately to the SE.'

Noted in ASMR 'Situated at 275m. The foundations are visible on aerial photograph of 1977 (BKS NJ62S 2731031 flown 7 July 1977) remains of 2 buildings marked on OS map of 1980.'

Noted in Ordnance Survey Name Book (book 54, page 43) as 'A crofters dwelling house and garden in good repair, the property of Sir Andrew Leith Hay, Leith Hall'.

Aerial photographs from 1948 (RAF CPE Scot/313/3845) show 2 buildings unroofed visible as rectangular outlines. Still visible in 1968 (OS 68/181/006) as 2 structures in ploughed field. Partly visible on photograph of 1973 (OS 73/417/171). Not visible on latest aerial photograph of 1988 (OS 16/88/196).

Currently (July 2002) no trace was made of this building during walkover survey, lies in area of recent ploughing and tree planting.

5 – Southbogs

NMRS – NJ62SW 156

ASMR – NJ62SW 49

Grid Ref: NJ 6046/2233 (centred)

Type – Hut circles

Noted in NMRS of 'Five hut circles are situated in an area of rough pasture and conifer woodland on a S-facing slope about 230m NW of Southbogs Cottage (site 7). They are described from W to E:

- a) – NJ 6041 2232 – traversed by the fence-line that works the NW boundary of the conifer plantation, only a small segment on the NW side of this hut-circle is not planted with trees. The interior, which measures about 7.9m in diameter, has been dug into the slope on the N to a depth of about 0.3m, and the enclosing stony bank is up to 2m in thickness and 0.3m in height.
- b) – NJ 6043 2231 – this hut circle lies entirely within the plantation about 16m SE of (a) and its position is marked by little more than a circular scooped depression, measuring about 8m in diameter and up to 0.5m in depth on the N, where the interior of the house was probably dug into the slope. There is a stony spread around the lip of the depression, which forms a low bank on the S.
- c) – NJ 6046 2227 – this hut circle is situated in improved pasture immediately SE of the plantation. It measures about 8m in diameter within a grass-grown bank up to 2.8m in thickness and 0.2m in height. A slight depression in the crest of the bank on the SE probably indicates the position of the entrance.
- d) – NJ 6048 2225 – this hut circle is situated in improved pasture 44m SE of the plantation and 22m SE of (c). It measures about 6.7m in diameter with a grass-grown bank up to 3m in thickness and 0.2m in height. The interior has been dug into the slope on the N to a depth of 0.4m and the entrance was probably on the S, where there appears to be a break in the bank.
- e) – NJ 6049 2232 – this hut circle is situated in pasture at the rear of a narrow terrace on the S-facing slope, and lies some 25m E of the NE corner of the plantation. It measures about 8.2m in diameter within a grass-grown stony bank up to 2m in thickness and 0.3m in height. A slight depression in the crest of the bank on the SE probably indicates the position of the entrance; a break in the bank on the NW is probably of comparatively recent origin.

Immediately NNE of the plantation, in the NW corner of the field, there are the remains of a field-system comprising at least four cultivation terraces or lynchets. The longest measures 50m in length and up to 15m in breadth and the scarps forming the leading edges are up to 1m in height. On the SW the lynchets die out on the slope within the plantation, and they do not appear to extend into the very rough ground on the NE. The relationship of the field-system to the hut-circles is not known. Visited by RCAHMS November 1996.

Noted in ASMR as 'the remains of hut circles and a field system lie NW of Southbogs Cottage. There are at least five hut circles in an area of rough pasture and coniferous woodland. One of the huts, at NJ 6041/2232 is cut by the fence-line which forms the NW boundary of the wood, while another lies within the wood c15m to the SE of it at NJ 6048 2225. Two other hut-circles lie to the SE of the wood at NJ6046 2227 and NJ6048 2225. A fifth lies to the east of the wood at NJ6049 2232. Four huts are roughly 8m in diameter while the other is slightly smaller at 6.7m in diameter. In the area E of the wood there are

the remains of at least four cultivation terraces or lynchets. The longest of these measures 50m long by 15m wide.

In June 2002 another hut-circle was identified c100m to the S. This area has been ploughed and planted with conifers. The hut circle is damaged but the trees have been removed. A worked flint was found lying on the surface to the E of the hut-circle. A possible smaller hut lies almost immediately to the SE. There are also 2 possible clearance cairns which have also been damaged by ploughing'.

Not visible on aerial photographs of 1946 & 1948. 4 hut circles are visible in 1968 (OS 68/181/006). Only 1 hut circle visible on photograph of 1973 (OS 73/417/171). Sites not visible on latest aerial photograph of 1988 due to large scale (OS 16/88/196).

Currently (July 2002) site is as noted by ASMR of being almost completely ploughed and ready planted. Plantation bank not easily accessible due to density of trees, the following sites were located:

1 – Hut circle at NJ 60488/22248 to SE edge of site (hut circle as noted by ASMR in June 2002) completely ploughed through. Situated at 860ft with 9m internal diameter with walls 0.5m thick with some upright stones still visible. No sign of entrance, trees already removed.



View of hut circle facing SW

2 – Possible structure at NJ 60467/22216 about 3m in diameter, possibly ploughed out clearance cairn. Situated on ridge above slope.



View of structure facing SW scales 1m x 1m

3 – Hut circle at NJ 60460/22272 of 7m in diameter, ploughed through at 883ft. Some upright stones to be seen.



View of hut circle facing W

4 – Hut circle at NJ 60470/22275 of 7.5m in diameter, ploughed through at 892ft.



View of hut circle facing N - scale 1m

5 – Hut circle at NJ 60499/22318 at 894ft with visible entrance to SE with walls 1m thick and 0.3m high with overall diameter 11.5m. Ploughed up to edge at SW.



View of hut circle facing S - Scales 1m x 1m

6 – Cultivation terraces as described by RCAHMS and ASMR, some slight damage by ploughing to SE and N edges.



View of Cultivation Terraces facing NE - Scale 2m

7 – Possible hut circle at NJ 60484/22300 at 895ft about 7m in diameter. Ploughed out completely. Sits well with site 5 as a pair.

It would be advisable for the following to be carried out for this site:

- *Removal of all trees to a 20m distance from each site; (all hut circle sites marked with canes and tapes)*
- *Conduct archaeological trial trenching/excavation of ploughed-out hut circles to ascertain damage and potential for future;*
- *Conduct an EDM survey of terraces and sites.*

6 – Southbog or Southbogs

NMRS – NJ62SW 92

ASMR – n/a

Grid Ref: NJ 6063/2216

Type – Cottage

Noted in NMRS of 'Nothing is visible of the cottage that stood at the edge of cultivated field 60m SW of Southbog Croft (site 7). Shown as roofed on the 1st edition OS map sheet 53 1870 but shown as unroofed on 2nd edition of 1910 sheet 53NW. Visited by RCAHMS May 1999'.

Not recorded in the Aberdeenshire SMR.

Aerial photographs from 1948 (RAF CPE Scot/313/3845) show building unroofed visible as rectangular outline. Still visible in 1968 (OS 68/181/006) as a square mound in ploughed field. Not visible on photograph of 1973 (OS 73/417/171). Not visible on latest aerial photograph of 1988 (OS 16/88/196).

Currently (July 2002) no trace was made of this building during walkover survey, lies in area of rough grass with no indication of location.

7 – Southbogs or Southbog

NMRS – NJ62SW 88

ASMR – n/a

Grid Ref: NJ 6070/2216

Type – House

Noted in NMRS of 'Steading of this croft is depicted as roofed on both the 1st and 2nd edition OS maps (1870 sheet 53, 1901 sheet 53NW) comprised of a cottage accompanied

by a detached garden to the SE and a long range to the W. The cottage is still inhabited as a private residence, but no trace of the range. Visited by RCAHMS May 1999'.
Not recorded in the Aberdeenshire SMR.

Noted in Ordnance Survey Name Book (book 54, page 43) as 'A crofters dwelling house and garden in good repair, the property of Sir Andrew Leith Hay, Leith Hall'.

Aerial photographs from 1946 to 1988 shows roofed building. Currently (July 2002) still a private dwelling.

8 – Southbogs or Southwood Burn

NMRS – NJ62SW 91

ASMR – n/a

Grid Ref: NJ 6059/2209

Type – Building

Noted in NMRS of 'Nothing visible of building that stood in cultivated ground 120m SW of Southbog Cottage (site 7). Depicted as roofed on both the 1st and 2nd OS maps (1870 sheet 53 and 1901 sheet 53NW). Visited by RCAHMS May 1999'.

Not recorded in the Aberdeenshire SMR.

Not visible on aerial photographs from 1946 to 1968. Partly visible on photograph of 1973 (OS 73/417/171) as a square grass covered mound. Not visible on latest aerial photograph of 1988 (OS 16/88/196).

Currently (July 2002) no trace was made of this building during walkover survey. Lies in corner of a field of barley, with no change to crop by colour or growth.

9 – Southwood Burn or Southbogs

NMRS – NJ62SW 89

ASMR – NJ62SW 46

Grid Ref: NJ 6045/2209

Type – Croft

Noted in NMRS of 'Long range reduced to pile of rubble in cultivated field 240m WSW of Southbogs Cottage (site 7). Depicted as roofed on 1st edition OS 1870 sheet 53, and probably contained a cottage with an outshot to its SW end and a garden to the SE side. Range still marked as roofed on 2nd edition OS of 1901 sheet 53 NW. Visited by RCAHMS May 1999'.

Noted in ASMR of 'Farmstead and small enclosure at 240m. The footings of an L-shaped building are visible on aerial photograph of 1977 (BKS NJ62S 2731031 flown 7 July 1077)'.

Aerial photographs from 1948 (RAF CPE Scot/313/3845) show 2 buildings unroofed visible as rectangular outlines, *ibid* for 1968 (OS 68/181/006). Still visible as L-shaped on photograph of 1973 (OS 73/417/171). Not visible on latest aerial photograph of 1988 (OS 16/88/196).

Currently (July 2002) no trace was made of this building during walkover survey, lies in area of recent ploughing and tree planting. Some large stones located in vicinity but no sign of anything structural, also find of 19th century glass and pottery as surface finds.



View of site 9 facing SW

10 – Knowhead

NMRS – NJ62SW 46

ASMR – NJ62SW 28

Grid Ref: NJ 6023/2173

Type – Farmstead

No information available in NMRS.

Noted in ASMR of 'a deserted farmstead with a whin-mill stone lying in the yard, a crusher stone of grey granite with shaft passage 0.17m diameter'.

Noted in Ordnance Survey Name Book (book 43, page 14) of 'A small farmstead situated N West of the Brindy Hill. The property of Col Leith Hay, Leith Hall'. Knowhead means the head of the knoll (Alexander, 1952, 314).

Aerial photographs from 1948 (RAF CPE Scot/313/3845) to 1988 show building to be roofed with enclosure to side.

Currently (July 2002) no trace was made of the millstone, the yard being heavily overgrown with vegetation. The building is L-shape in plan, rubble built with a slate roof with roof vents on ridgeline. Building has been modified internally to use with associated sheep dip pens in yard. No sign of internal features with the exception of boiler. Of interest are the lintels to the doorways that are of cast-iron. Dam to rear of building to gather water for sheep dipping, possibly used also for milling?

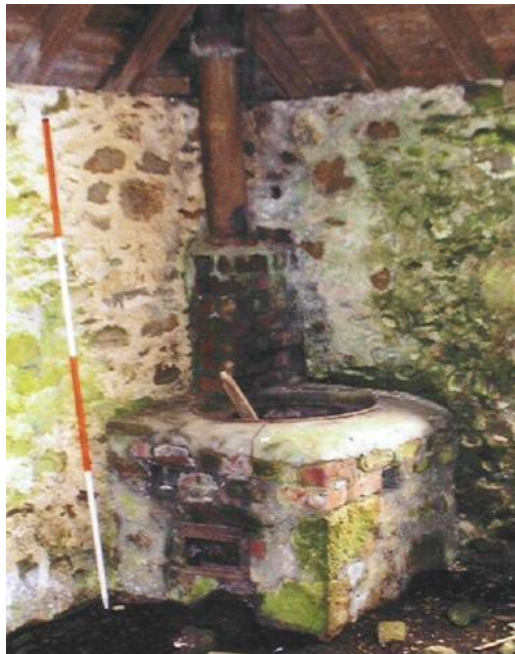
Site to have 20m exclusion from any future planting.



View of Farmhouse facing W



Detail of cartsheds entrance - scale 2m



View of Boiler - Scale 2m



View of sheep dip and pens for rear facing SE

11 – Sunnyside

NMRS – NJ62SW 78

ASMR – NJ62SW 47

Grid Ref: NJ 6041/2154

Type – Farmstead

Noted in NMRS as 'Remains of steading on S facing slope 520m SW of Damhead Farmstead. They comprise of a range aligned NE & SW with building set at right angles to it on the SE and a garden in the angle between them. The SW end of the range incorporates a cottage, which faces onto the garden. The cottage is 13m NE to SW by 5.5m wide with walls 0.6m thick and up to 1m in height, and central entrance to SE side. The rest of the range is made up of 2 compartments, which may have been independent structures. The 1st on the NW side of the cottage attached by a short wall is subrectangular in plan 5.4m x 4.9m with low stone footings. The 2nd compartment is 11.8m NE to SW by 5.6m standing to 1m in the NW. The building set at the right angle of the range at the NE measures 10.1m by 5.1m with walls 0.6m thick and 0.5m high entrance to SW and also likely to be a cottage. In the N corner of the garden is another building which is 7.6m NW to SE by 5.5m with walls 0.6m wide and up to 1m high.

The surviving buildings correspond to those depicted on 2nd edition OS of 1901 sheet 53NW although the cottage incorporated in the SW end of the range is shown as a free standing building on 1st edition OS of 1870 (sheet 53). The earlier map shows the garden and a small roofed building on the side of the latter cottage on its NE side. Visited by RCAHMS November 1996'.

Noted on ASMR as 'buildings at 240m shown on aerial photograph of 1977 (BKS NJ62S 2731031 flown 7 July 1977).

Aerial photographs from 1948 (RAF CPE Scot/313/3845) show 2 buildings unroofed visible as rectangular outlines. Ibid for aerial photographs for 1968 (OS 68/181/006) and 1973 (OS 73/417/70). Still visible on latest aerial photograph of 1988 (OS 16/88/196).

Currently (July 2002) site is still evident but not very discernible due to long grass. Photographs not clear.

Site to have 20m exclusion put in place for any future planting. It would also be advisable for site to be planned as part of an EDM survey during the winter when the vegetation has died back.

The following additional site was located as part of the desktop survey:

12 – Satter Hill

NMRS – n/a

ASMR – n/a

Grid Ref: NJ

Type – Cairn

'Pile of stones' marked on map sheet NJ52SE of 1959, not marked on 1st edition OS map of 1870 but is marked as 'pile of stones' on map of 1901 sheet 53NW. Not marked on map of 1965. Visible faintly on aerial photograph of 1968 (OS 68/181/006). Not evident on aerial photographs for 1973 or 1988, latter being too big a scale.

Small cairn 2m in diameter and 0.5m high at 1199ft. Not on summit of Satter Hill so function is unclear.

Site to have 20m exclusion put in place for any future planting.



View of cairn facing N - Scale 1m

13 – Satter Hill

NMRS – n/a

ASMR – n/a

Grid Ref: NJ 59683/22681

Type – Rectangular structure, possible

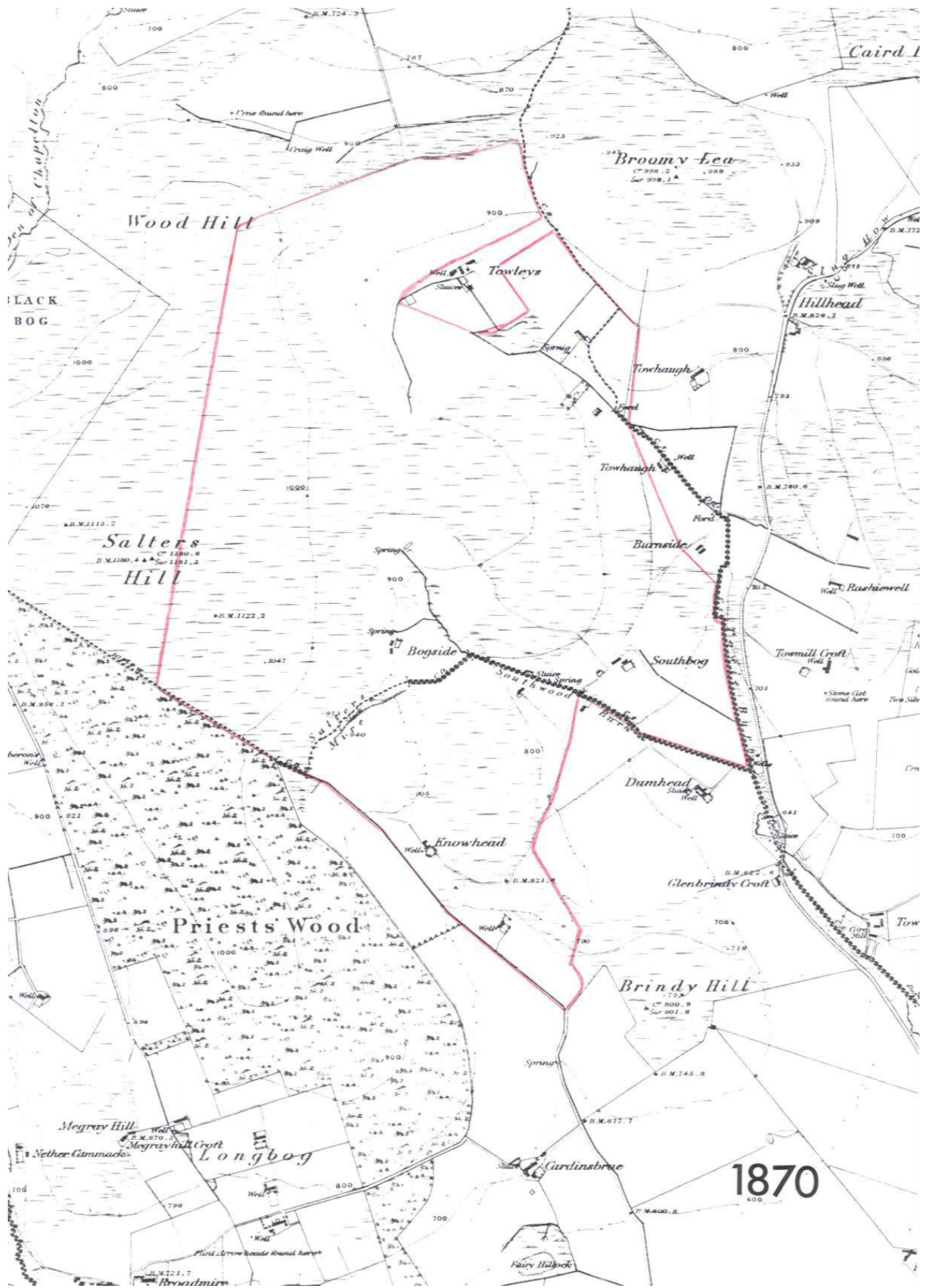
Not visible on aerial photographs from 1946-1988.

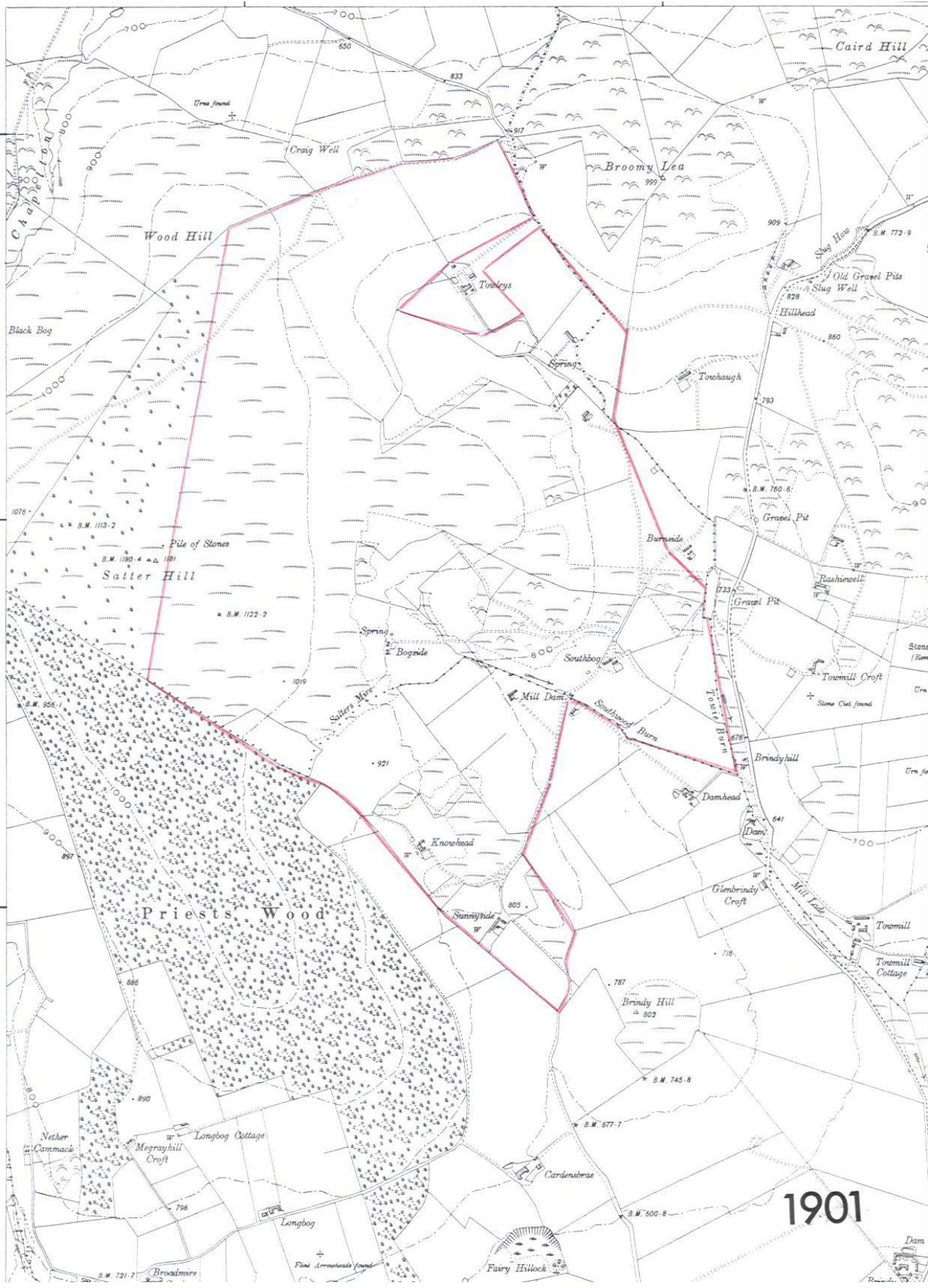
Site located during walkover survey. Possible rectangular structure aligned N-S of 9m NS x 5m EW at 1140ft. Large amount of dumped stoned to south, also a couple of small cairns of stones in vicinity of 2m diameter and 0.5m high. Possibly site of modern animal burials? Function of site is unknown.

Site to have 20m exclusion in place for any future planting.



View of site facing SE - scales 1m





1901

References

Aberdeenshire Council Sites and Monuments Record entries for NJ52SE and NJ62SW.

Alexander, W A (1952) The Placenames of Aberdeenshire. The Third Spalding Club. Aberdeen.

National Monuments Record of Scotland CANMORE database entries for NJ52SE and NJ62SW.

Ordnance Survey Map Aberdeenshire sheet 53 1870
Ordnance Survey Map Aberdeenshire sheet 53 NW 1901
Ordnance Survey Map NJ52SE 1959 and 1965.

Ordnance Survey Name Book (1867-71) – Parish of Leslie book 54. Parish of Keig book 43.

Thomson, John (1826) Map of Aberdeenshire.

Aerial Photographs consulted

RAF 106G/Scot/UK139	3.7.1946	2040-2038	1:10,000
RAF CPE/Scot/UK313	8.3.1948	3346-3344	1:10,000
OS OS/68/181	12.6.1968	008-005	1:7500
OS OS/73/417	21.8.1973	170-173	1:8000
OS 61688	14.5.1988	196-107	1:24,000

Stuart Farrell
39a Park Street
Nairn
Highland
IV12 4PP

Appendix 1 – Photograph Register

Copies of photographs have been submitted to the Aberdeenshire SMR and the NMRS.

- 1 – View of hut circle site 5.1 facing N – scale 1m
- 2 – ibid but facing W
- 3 – ibid but facing SW
- 4 – View of structure site 5.2 facing SW scale 1m x 1m
- 5 – View of hut circle site 5.3 facing W
- 6 – View of hut circle site 5.4 facing N
- 7 – View of hut circle site 5.5 facing SE
- 8 – ibid but facing S
- 9 – View of cultivation terraces site 5.6 facing NE
- 10 – View of site 9 facing SW
- 11 – View of Farm site 10 facing W
- 12 – Site 10 – View of cart sheds facing W
- 13 – Site 10 – detail of doorway – scale 2m
- 14 – Site 10 – detail of skylight and roof vent
- 15 – Site 10 – rear of farm facing NE
- 16 – Site 10 – rear of farm facing E
- 17 – Site 10 – pond for dam to rear facing SW
- 18 – Site 10 – detail of internal boiler – scale 2m
- 19 – Site 10 – view of sheep dip and pens facing S
- 20 – Site 12 – cairn facing N – scale 1m
- 21 – Site 13 – view of structure facing SSW
- 22 – Site 13 – ibid but facing NE
- 23 – Site 13 – ibid but facing SW