



RCAHMS

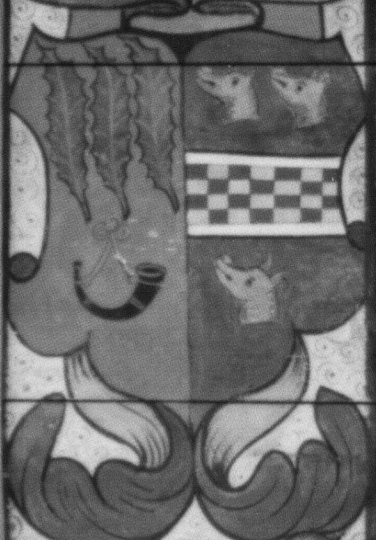
IMAGES *of* SCOTLAND

HMSO



A1.7

IMA



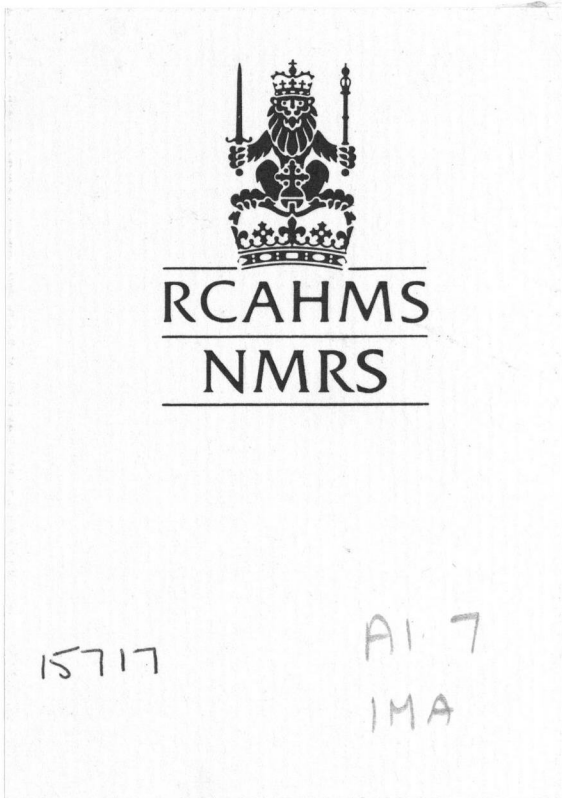
TT

A1.7 15717
IMA



RCAHMS

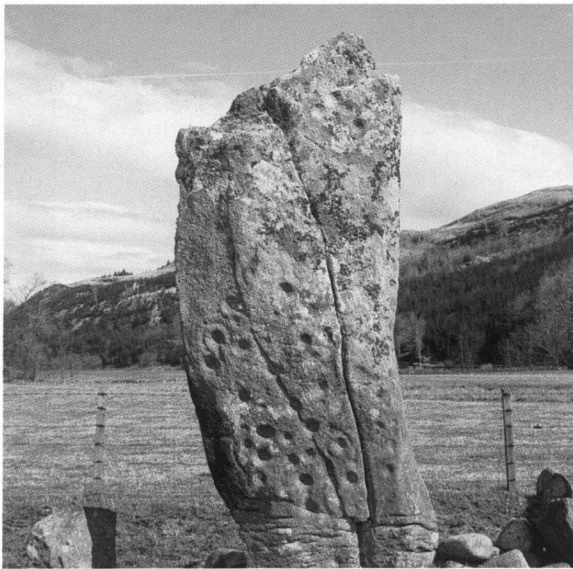
IMAGES *of* SCOTLAND



15717

A1.7
IMA

I M A G E S O F S C O T L A N D



Top Argyll: stone-built chamber of a burial cairn c.3000BC

Bottom Argyll: standing stone with neolithic cup markings
c.2500BC

Opposite Fife: impressive setting of standing stones c.2500BC





Buzzart Dikes, Kinloch, Perth and Kinross District: the spectacular scenery of a medieval hunting park

I M A G E S O F S C O T L A N D



Top Whitcastle Hill, Roxburgh District: fortifications and later prehistoric farmsteads c.100BC

Bottom Green Castle, East Lothian: earthwork defences of a medieval timber-built stronghold

I M A G E S O F S C O T L A N D

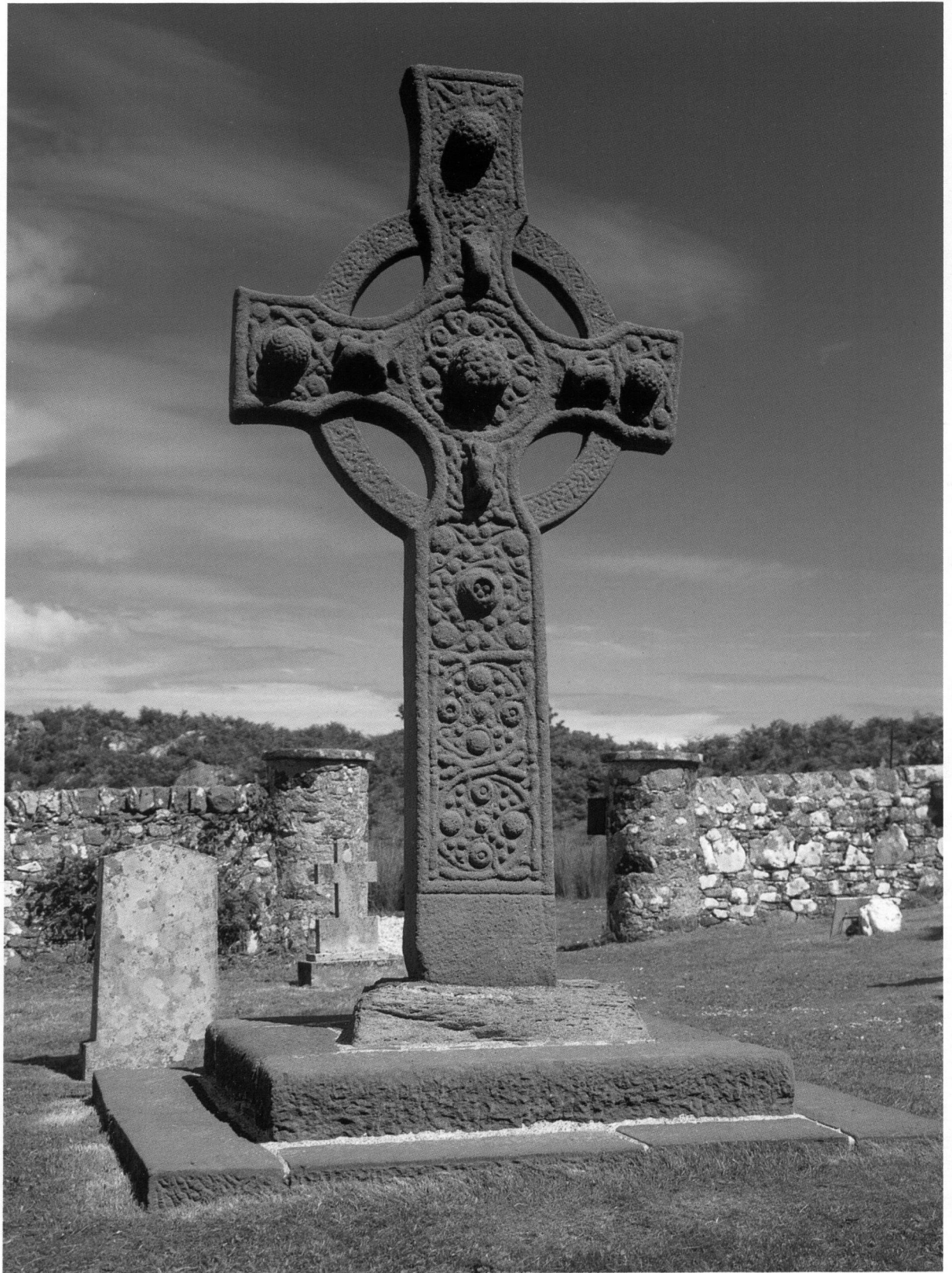


Top Broch, near Bragar, Lewis

Bottom Spittal of Glenshee, Perth and Kinross District: medieval cultivation strips around a long-abandoned farming settlement

Opposite Crannog, Loch Awe, Argyll: man-made island, originally supporting timber houses, of a type common in the Highlands c.800BC-AD1000







Left Pictish cross-slab, Meigle, Perth and Kinross District: rear face showing a group of characteristic symbols (*Historic Scotland*)

Right Pictish cross-slab, Fowls Wester, Perth and Kinross District: the richly detailed carving includes Jonah's digestion by the whale (*Historic Scotland*)

Opposite Kildalton Cross, Islay, Argyll (*Historic Scotland*)

I M A G E S O F S C O T L A N D



Top Thatched cottage, Bousd, Isle of Coll, Argyll

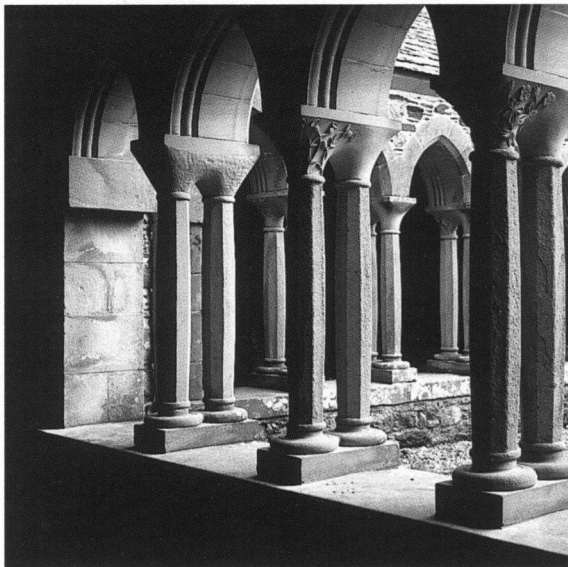
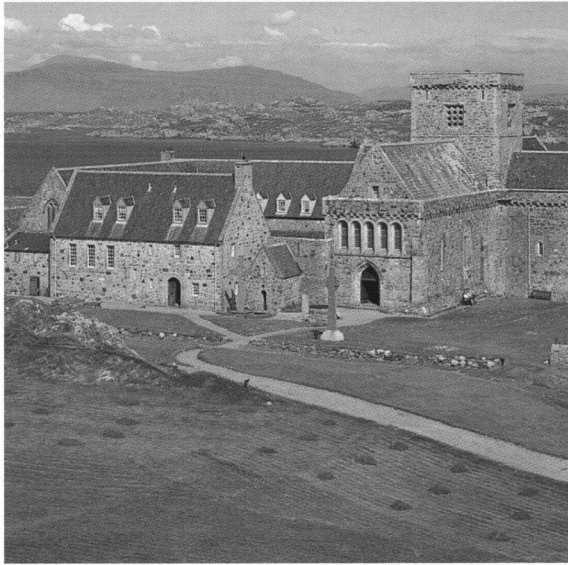
Bottom Tobermory, Mull, Argyll: harbour and waterfront of the planned village

I M A G E S O F S C O T L A N D



Inveraray Castle and Town: view down Loch Fyne from
Dùn na Cuaiche

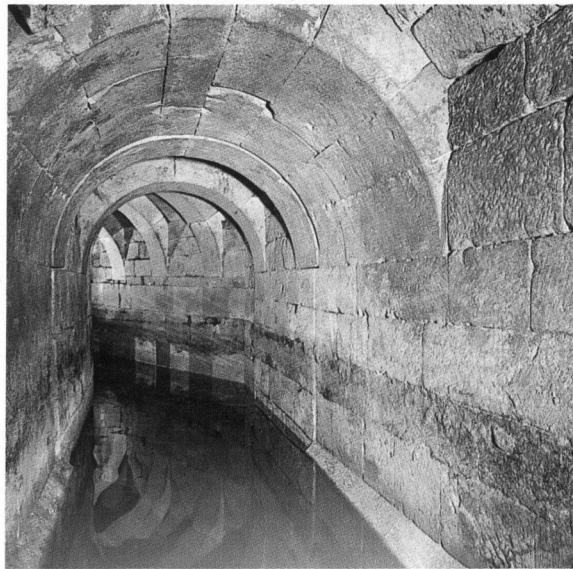




Top Iona Abbey and crosses, Argyll: general view
(*Crosses, Historic Scotland*)

Bottom Iona Abbey, Argyll: detail of restored cloister-arcade

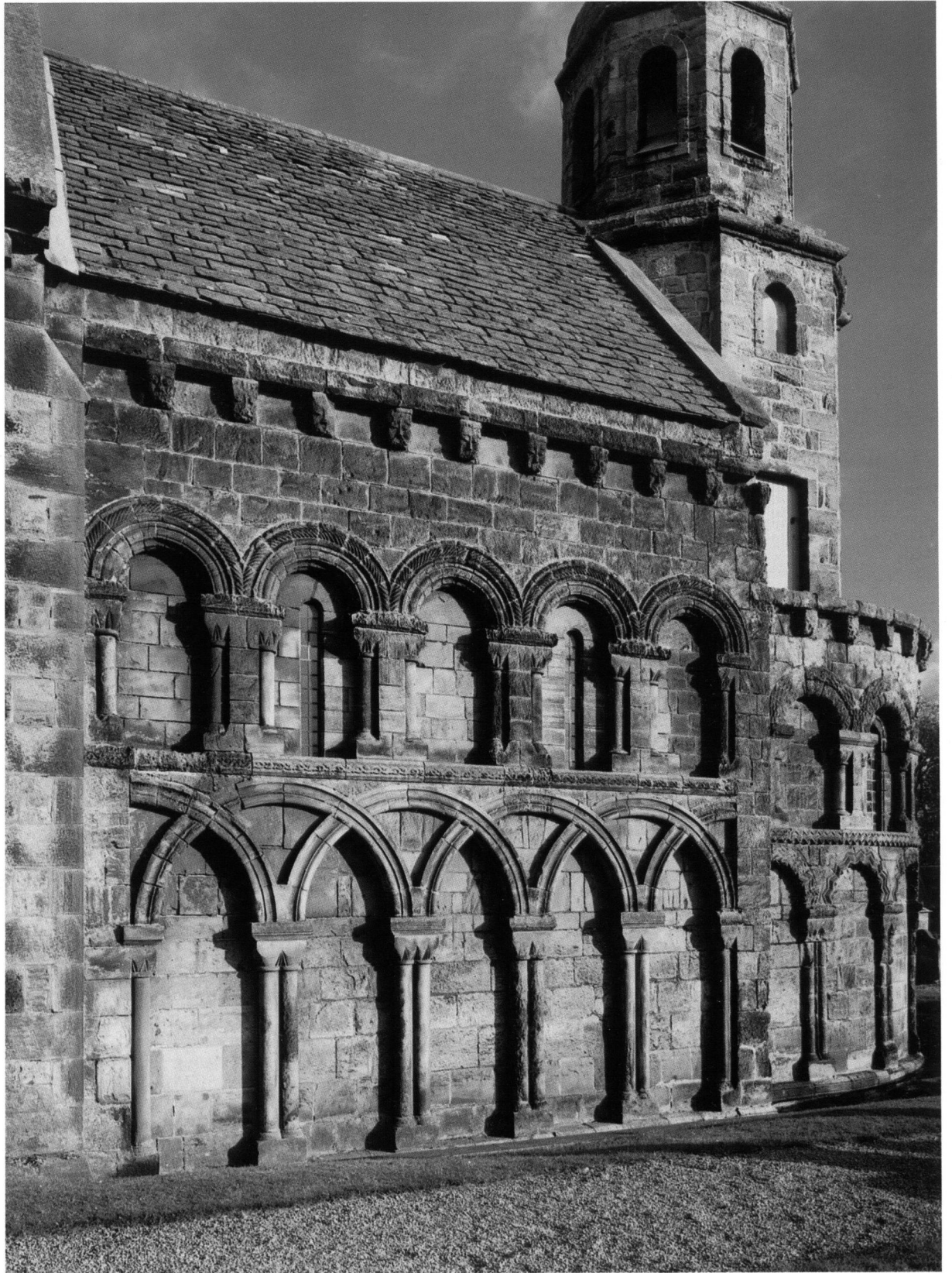
Opposite Coats Memorial Church, Paisley, Renfrew District:
celestial vault over east end of mill owners' church



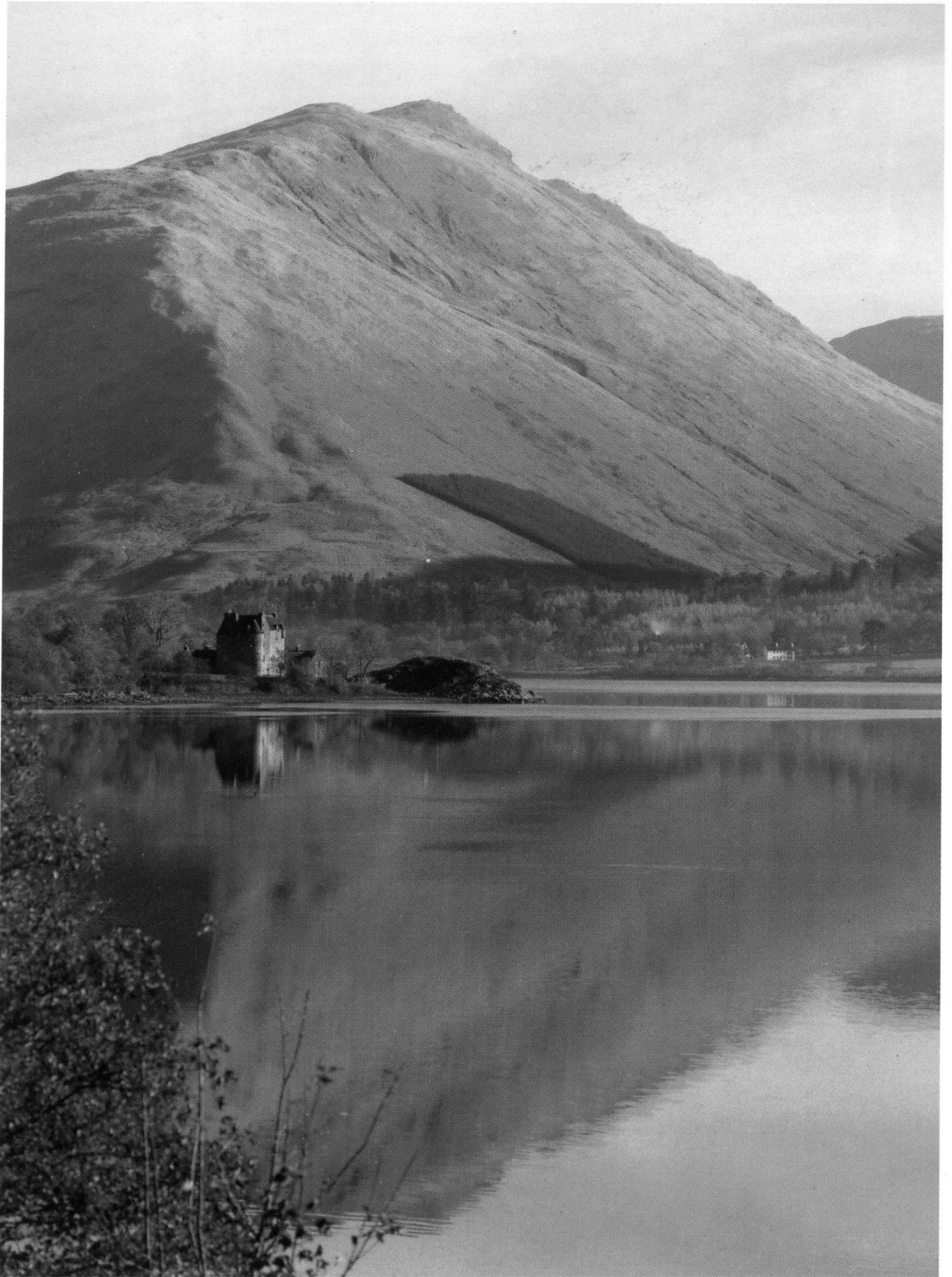
Top Medieval drain, Paisley Abbey, Renfrew District:
rib-vaulted cavern beneath the monastic precinct

Bottom Medieval drain, Paisley Abbey, Renfrew District:
round-arched bridge over eastern section

Opposite Leuchars Parish Church, North-East Fife: Romanesque
arcading on the south wall



I M A G E S O F S C O T L A N D





Top Caerlaverock Castle, Nithsdale: shield-shaped guardian of the Solway frontier (*Historic Scotland*)

Bottom Fort George, Ardersier, Inverness District: the ultimate in Hanoverian artillery fortification (*Historic Scotland*)

Opposite Dunderave Castle, Argyll: distant view of tower across Loch Fyne towards Glen Kinglas

I M A G E S O F S C O T L A N D



Top Glamis Castle, Angus: turreted entrance-front of Strathmore's noble pile

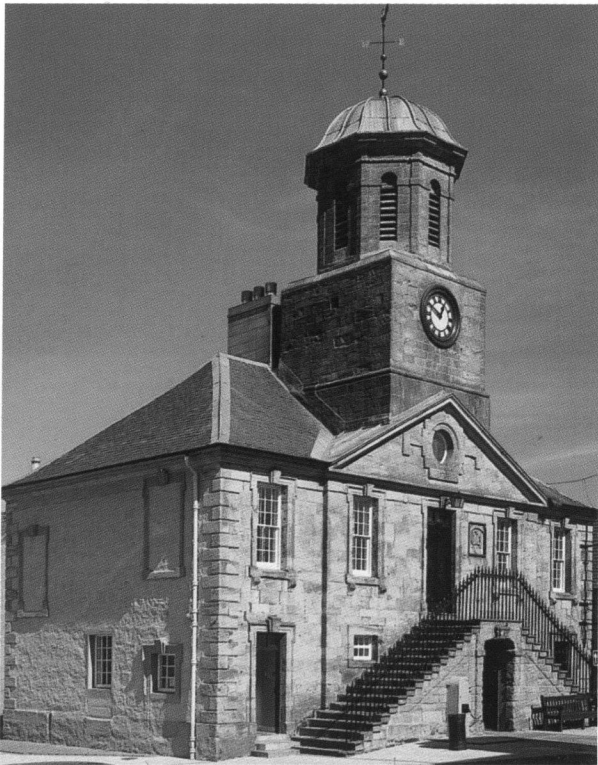
Bottom Kinnaird Castle, Perth and Kinross District: life in a late medieval tower, 20th-century style

I M A G E S O F S C O T L A N D

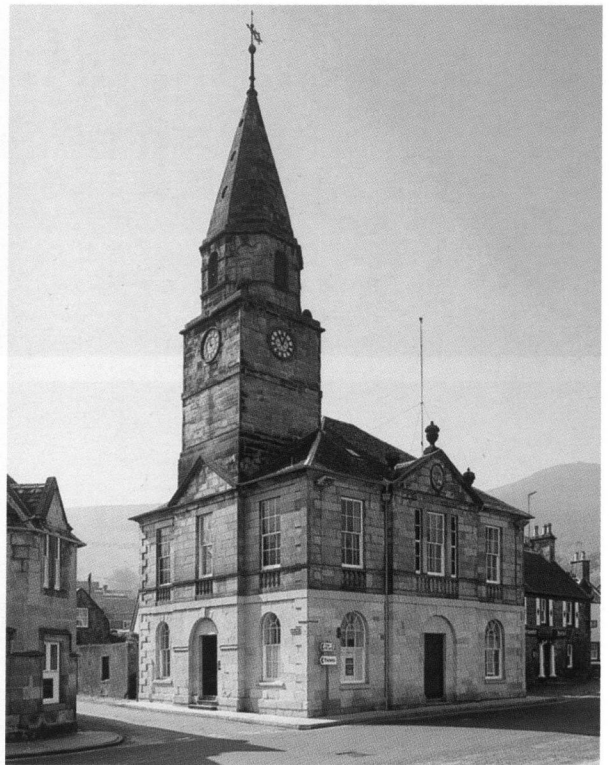


Top Falkland Palace, North-East Fife: French Renaissance on
Scottish soil, courtyard façade of south quarter
(*The National Trust for Scotland*)

Bottom Kilchurn Castle, Loch Awe, Argyll: one-time fastness of
the Glenorchy Campbells (*Historic Scotland*)



Left Sanquhar Tolbooth (Town House), Nithsdale: Georgian municipal building of William Adam design



Right Falkland Town House, North-East Fife: civic dignity
c.1800

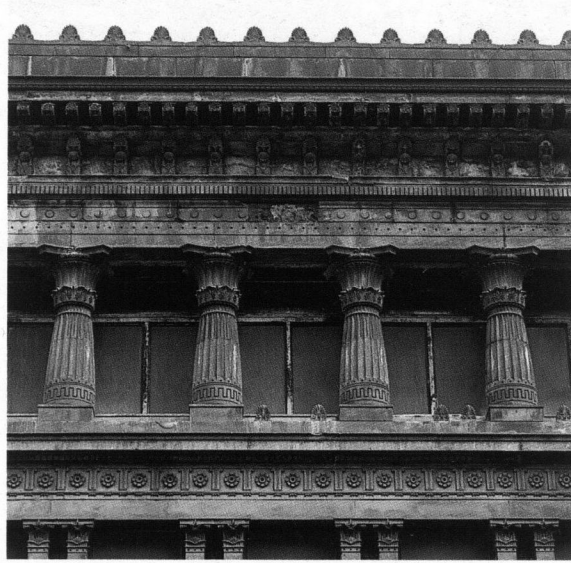
Opposite Culross Town House, Dunfermline District
(The National Trust for Scotland)





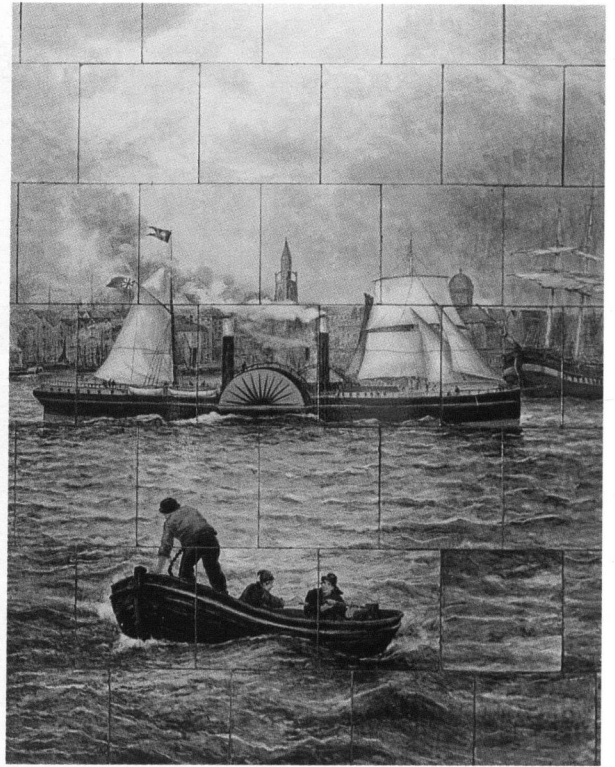
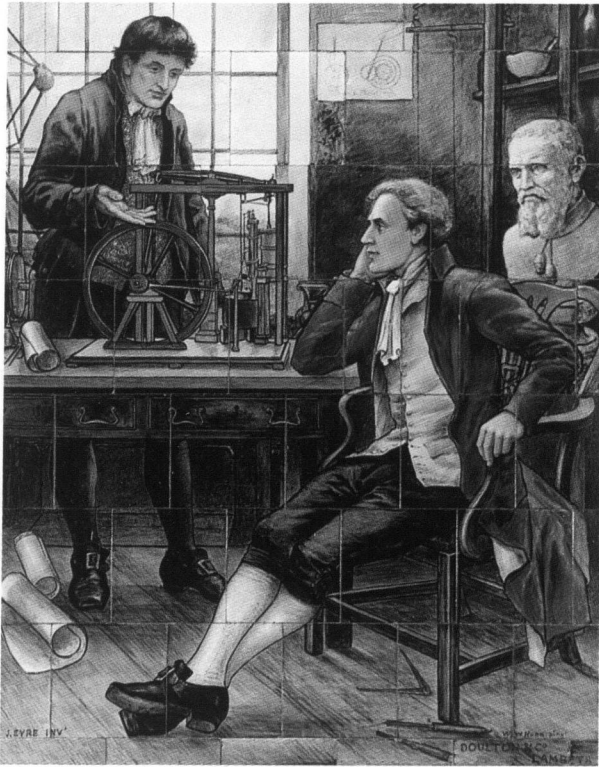
22 Park Circus, Glasgow: cast-iron cupola, the crowning glory
of a rich mid-Victorian interior

I M A G E S O F S C O T L A N D



Top Egyptian Halls, 84-100 Union Street, Glasgow: detail of third-floor colonnade and 'Greek' Thomson ornament

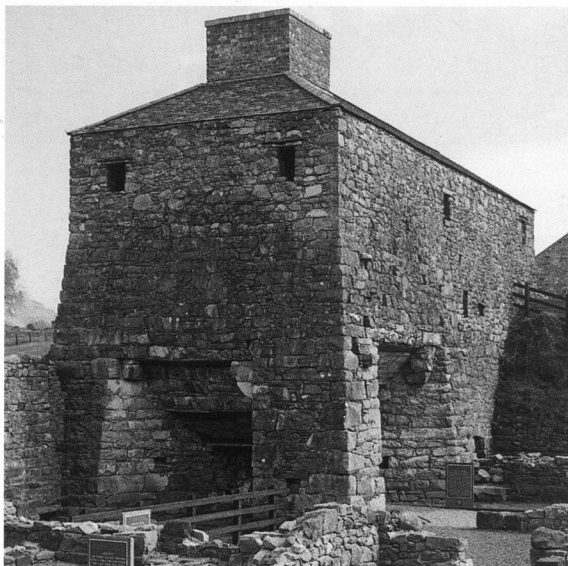
Bottom India Tyre Factory, Inchinnan, Renfrew District: main doorway to office-block



Café Royal, West Register Street, Edinburgh, sumptuous turn-of-the-century interior: specimen tile pictures and stained-glass window in Circle and Oyster Bars (James Watt; sailing scene; and window representing archery and shooting)







Top Charcoal-fired iron furnace, Bonawe, Argyll (*Historic Scotland*)

Bottom Lady Victoria Colliery, Newtongrange, Midlothian,
in its National Coal Board heyday

Opposite Still-house, Tamdhu Distillery, Knockando, Moray:
bank of copper stills and early spirit-safe



Top Ornamental drinking-fountain, Maconochie Road,
Fraserburgh, Banff and Buchan

Bottom Kibble Palace, Botanic Gardens, Glasgow: a triumph of
glass and iron in the conservatory named after its designer

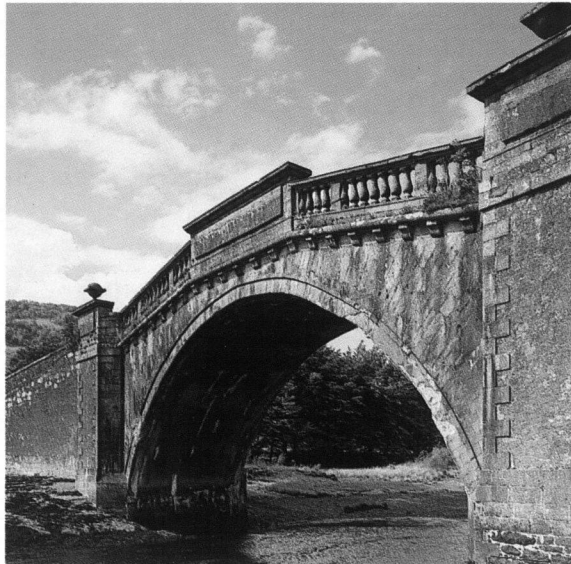
Opposite Glasgow School of Art, 167 Renfrew Street, Glasgow:
Charles Rennie Mackintosh insignia, window and bracket detail
on the north façade

I M A G E S O F S C O T L A N D





I M A G E S O F S C O T L A N D



Top Old bridge, Carrbridge, Badenoch and Strathspey District

Bottom Garron Bridge, Inveraray, Argyll

Opposite Forth Railway Bridge: track-level view through
lattice girders

Inclusion of sites within this booklet does not imply a right of public access. Properties in the custody of the Secretary of State for Scotland (Historic Scotland) and The National Trust for Scotland are indicated; most of the remainder are in private ownership.

Copies of the views reproduced in this booklet may be purchased on application to The Secretary, RCAHMS, John Sinclair House, 16 Bernard Terrace, Edinburgh EH8 9NX, citing the following reference numbers:

John Knox's House B 47850 CT Paisley, tile armorial B 44779 CN Crathes A 27226 CN Chamber of Burial Cairn: Argyll A 62844 CN Standing Stone: Argyll A 62927 CT Fife: standing stones B 77502 CT Buzzart Dikes A 55549 CN Whitcastle Hill B 17545 CN Green Castle A 56414 CN Broch B 77503 CN Spittal of Glenshee A 78041 CT Crannog AG 4907 CN Fowlis Wester A 35069 CN Meigle B 1472 CN Kildalton AG 11360 CT Cottage: Bousd B 55835 CT Tobermory B 00396 CN Inveraray B 45917 CT Iona A 45917 CT Iona, cloister B 77505 CN Paisley, Coats Church A 43514 CN Paisley drain B 56031 CN Paisley drain, east B 56030 CN Leuchars B 08166 CN Caerlaverock DF 3382 CN Fort George A 28616 CN Dunderave B8 CN Glamis B 77501 CN Kinnaird B 39101 CN Falkland Palace A 33073 CN Kilchurn B 08153 CT Sanguhar B 47664 CN Falkland Town House B 39220 CN Culross B 39165 CN Glasgow, Park Circus B 20163 CN Glasgow, Egyptian Halls B 00521 CN Inchinnan A 74204 CN Edinburgh, Café Royal, James Watt tile ED 5239 CN Edinburgh, Café Royal, sailing scene tile ED 5221 CN Edinburgh, Café Royal, stained glass ED 5223 CN Bonawe A 57323 CN Newtongrange ML 4040 CN Tamdhu MO 1725 CN Fraserburgh A 57235 CN Glasgow, Conservatory B 31913 CN Glasgow, School of Art A 37423 CT Carrbridge B 55833 CT Inveraray, Garron Bridge B 19136 CN Forth Railway Bridge B 03280 CN

Front Cover John Knox's House, Edinburgh
Back Cover Former Co-operative building, 25-9 Causeyside Street, Paisley, Renfrew
District: detail of tile armorial in entrance vestibule
End Papers Crathes Castle, Kincardine and Deeside: painted ceiling of the Muses'
Room *The National Trust for Scotland*

© Crown copyright 1993

First published 1993

Application for reproduction should be made to HMSO

Designed by Graham Galloway

HMSO Graphic Design Edinburgh

ISBN 0 11494274 9



HMSO publications are available from:

HMSO Bookshops

71 Lothian Road, Edinburgh, EH3 9AZ
031-228 4181 Fax 031-229 2734
49 High Holborn, London, WC1V 6HB
071-873 0011 Fax 071-873 8200 (counter service only)
258 Broad Street, Birmingham, B1 2HE
021-643 3740 Fax 021-643 6510
Southey House, 33 Wine Street, Bristol, BS1 2BQ
0272 264306 Fax 0272 294515
9-21 Princess Street, Manchester, M60 8AS
061-834 7201 Fax 061-833 0634
16 Arthur Street, Belfast, BT1 4GD
0232 238451 Fax 0232 235401

HMSO Publications Centre

(Mail, fax and telephone orders only)
PO Box 276, London, SW8 5DT
Telephone orders 071-873 9090
General enquiries 071-873 0011
(queuing system in operation for both numbers)
Fax orders 071-873 8200

HMSO's Accredited Agents
(see Yellow Pages)
and through good booksellers



...um tunc dieo fando la place au miffale tute ceptit All melode non ple



Images of Scotland

displays a startling heritage of buildings and monuments
in over 50 full-colour photographs.



Selected from the National Monuments Record of Scotland, the pictures capture the remarkable variety and beauty of the land. From mysterious standing stones to the grandeur of mighty castles, from the constructions of heavy industry to the amenities of towns and cities, these views combine to make this a fascinating and rewarding souvenir.

Scottish Interest/History

ISBN 0-11-494274-9



9 780114 942748

£3.95 net