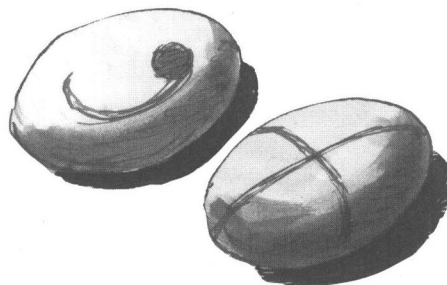
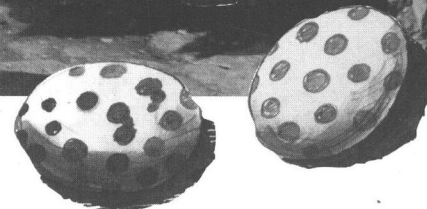
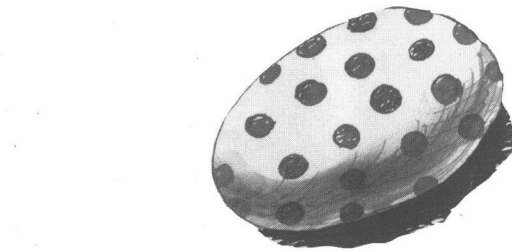
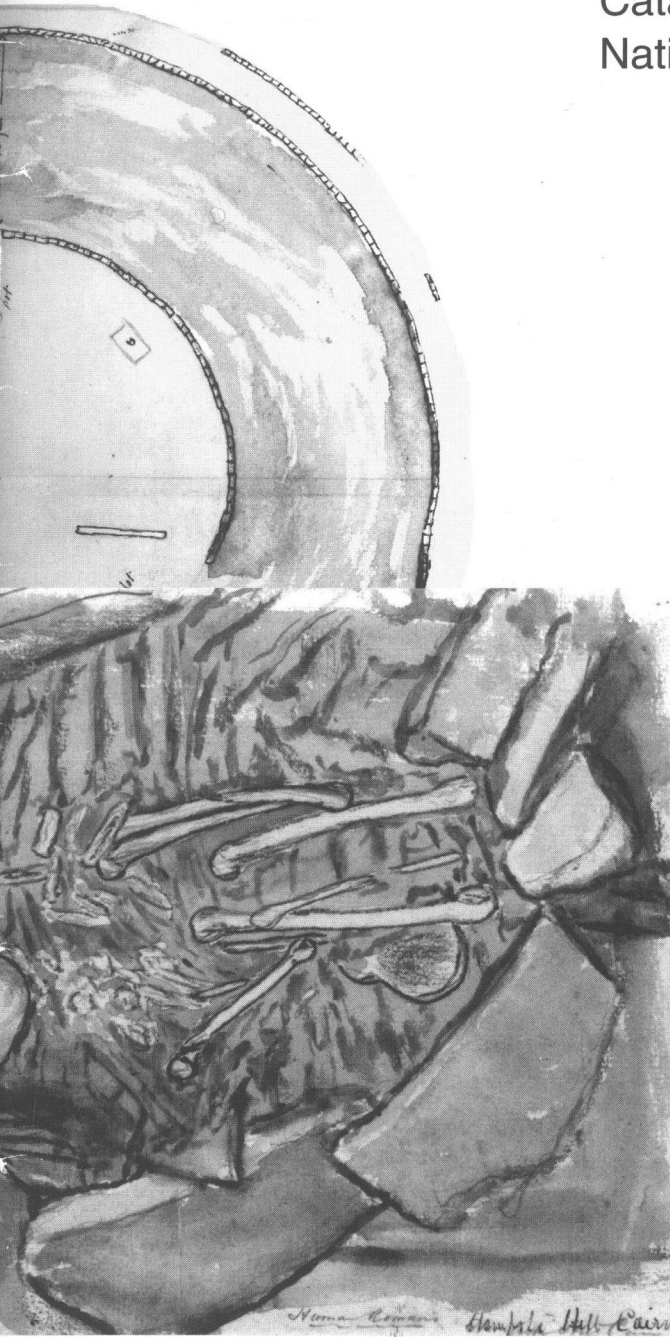




Royal
Commission on the
Ancient and
Historical
Monuments of
Scotland

The Sir Francis Tress Barry Collection

Catalogue of Material held in the
National Monuments Record of Scotland



A1.7
BAR



TR

RCAHMS
NMRS

22273

A1.7

BAR

42357

22273

TR

Content Acknowledgements

ALB

BAR

The Sir Francis Tress Barry Collection

A Catalogue of the Material held in the National Monuments Record of Scotland

PLAN OF BROOCH
AT
KEISS, CATHNESS



011 645 1830
011 645 1837
011 645 1809
011 645 1808

RCAHMS
1998

Preface and Acknowledgements

The purpose of this catalogue is to bring together the varied strands of material relating to the archaeological activity of Sir Francis Tress Barry in Caithness held in the National Monuments Record of Scotland (NMRS). A list of all the sites known to have been excavated by Barry has been included. The catalogue is organised by site, in chronological order by approximate date of excavation, and provides full details of all the photographs, drawings and manuscripts relating to each site.

Cataloguing of the collection has been undertaken by numerous volunteers through the years to whom we are much indebted. The compilation of the catalogue has been carried out by Iain Fraser, with additional text by Lesley Ferguson, and with the assistance of John Stevenson, Diana Murray, Graham Ritchie, Robert Shaw and Roger Mercer. Special thanks are due to Sir Edward Barry and to Lord Strathnaver for the loan of material in the collections of Dunrobin Castle Museum.

Assistance was also provided by A Dunnet, Dunnet and Company, Solicitors; E Macqueen, formerly Caithness Museums Service and I Robertson, Culture and Leisure Services, Highland Council.

Enquiries about the Sir Francis Tress Barry Collection should be addressed to:

The Secretary
The Royal Commission on the Ancient and Historical
Monuments of Scotland
John Sinclair House
16 Bernard Terrace
Edinburgh
EH8 9NX

Telephone: 0131 662 1456

Fax: 0131 662 1477

0131 662 1499

Email: nmrs @ rcahms.gov.uk

Page	
2	Preface and Acknowledgements
5	Introduction - Sir Francis Tress Barry
8	The Collection
9	References
10	List of excavated sites arranged chronologically
10	Map of excavated sites
11	Donations to the Royal Museum of Scotland
11	Addresses of other collections with F T Barry material
12	Catalogue

**PLAN OF BROCH
AT
KEISS - CAITHNESS**

- A Circular Wall.
- B Stairs in D^a upwards
- C D^a.
- D Dipping Hole.
- E Well, flagged over
- F Interior Entrance to stairs.
- G Reverse Path to do.
- H Wall about 4ft high built against the circular wall.
- I Steps in do.
- K Secondary buildings on debris
- L Stone slabs, standing on edge.
- M Outside rooms, not yet thoroughly examined.

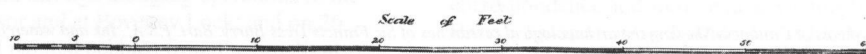


Figure 1: 'Plan of Broch at Keiss - Caithness'. Numerous examples of these printed excavation plans are held in the various collections, and were used to illustrate the sites in publication, but they also provided the basis from which later features could be added. This example is from midway through the excavations and has the broch entrance to the south-east pencilled in, along with additional features to the north-east, but still differs from the completed plan as published by Anderson (1901).

Introduction

Sir Francis Tress Barry

This catalogue contains details of the material held in the National Monuments Record of Scotland (NMRS) relating to the archaeological work of Sir Francis Tress Barry in Caithness from 1890 to 1904. Some of the material has been copied from other sources, but most is contained within the collections of the Society of Antiquaries of Scotland now deposited in the NMRS. Photography has been used extensively to illustrate some fifteen years of archaeological activity, making it one of few surviving archaeological collections from the late nineteenth century in Scotland using this medium; and with the correspondence and papers provides a fascinating insight into the work of Barry. His work has been referred to in several publications (e.g. Davidson and Henshall 1991; Graham 1978), sometimes criticising his excavation techniques and his lack of any proper recording, or Rooney and Rooney (1991) in relation to his magnificent mansion at St Leonard's Hill, Windsor. However, little has been written about Barry himself or the importance of this collection.

Barry was born on the 8th June 1825, the eldest son of Charles Barry of the Priory, Orpington, Kent. He was educated at the old Camberwell Collegiate School, affiliated to King's College, and by the age of sixteen he had entered a commercial house in Bilbao, in northern Spain. Here he established himself as a merchant and in 1859 became involved in the copper mines of San Domingo, Portugal, from which he acquired his wealth, becoming head of the successful mining firm of Mason and Barry. In 1846, he had become Vice-Consul for the Spanish Province of Biscay, and a year later was appointed Acting Consul for the Provinces of Biscay, Santander and Guipuzcoa. From 1872 he was the Consul-General for the Republic of Ecuador. Various honours were bestowed on him, including the Order of Christ of Portugal (1863), the Cross of Naval Merit of Spain and in 1876 he was created Baron de Barry of Portugal. In 1889, he was created a Baronet by Queen Victoria and in 1890 became the Member for Parliament for Windsor, a seat he held until 1906.

Barry had a distinguished diplomatic and business career, and seems to have become active in archaeology late in life, possibly after the purchase of the estate at Keiss, Caithness, from the Duke of Portland in 1881. His summer months were spent at Keiss where he became a Justice of the Peace and Deputy-Lieutenant for Caithness, while the remainder of the year was divided between his London town house and his magnificent residence at St Leonard's, Windsor, a house he acquired in 1872 and had rebuilt to designs by C H Howell. Barry himself states that his involvement in Caithness archaeology began in the summer of 1890 when his 'attention was attracted to a large green mound a few hundred yards to the north of the small harbour and fishing village of Keiss.' (1899 paper to the Society of Antiquaries of London - NMRS MS/821/2). Local enquiries ascertained that in 1863 Samuel Laing had opened the upper part of this mound and had discovered a series of stone features before abandoning the work due to lack of time. Barry acquired a copy of *Prehistoric Remains of Caithness* (1866) and was stimulated to continue the investigation of the mound. This site, 'Harbour Mound' or Keiss broch, was to be one of Barry's first excavations.

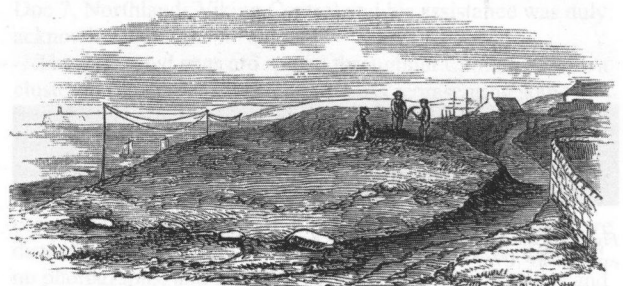
In 1892 Barry was elected a fellow of the Society of Antiquaries of London where on several occasions he spoke about his work in Caithness or exhibited objects in his possession. On 7 March 1895 and 5 May 1898 he exhibited various antiquities found through dredging operations in the River Thames at Windsor and at Boveney Lock; and on 26 May 1898 he exhibited painted pebbles from the brochs at Keiss and briefly gave an account of these and other artefacts excavated, promising to present a more detailed account of his

work at a future date. Further antiquities from the Thames, as well as Luce Bay were exhibited on 20 June 1901. It was to this Society that Barry personally gave two papers, on 8 June 1899 and 12 June 1902, describing his work, first at Keiss broch and then at Hillhead broch.

The paper read to the Society of Antiquaries of London in 1899 is interesting not only because of the description of Keiss broch itself but also for the insight into the character and working practices of Barry himself. Barry did not claim to be an archaeologist and explained his interest in the paper: 'It would be the height of assumption on my part to attempt to address the Fellows of our Society posing as a scientific man, or one in any way specially qualified to draw conclusions from the interesting facts that I shall have the honour of bringing to your notice this evening. I make no such profession, but having been all my life more or less connected with mining operations, I naturally take great interest in delving into the



Figure 3: 'The Pap', Hillhead, broch, 1901. Sir Francis Tress Barry in the entrance to the broch. (D5204)



Harbour Mound.

Figure 4: Keiss, broch or 'Harbour Mound' as depicted in *Pre-historic Remains of Caithness* by Samuel Laing, 1866.

crust of this material world, and endeavouring to ascertain what the result of such a search may be. I merely claim to have opened out these prehistoric ruins in a business and workman-like manner'.

From this and the correspondence it is apparent that Barry was not confident in this role as excavator and relied on others for archaeological advice. Two men, Dr Joseph Anderson and the Reverend James M Joass, feature regularly in the correspondence and were regular visitors to the excavations. Barry's association with Anderson is likely to have developed early in his time in Caithness, but certainly they were acquainted by 1890 when Barry accompanied Anderson, then Keeper of the National Museum of Antiquities, Edinburgh, to

various monuments in Caithness, including the chambered cairns and broch at Yarrows. The acquaintance with the Reverend James M Joass (1830-1914), minister at Golspie, was also developed by the early 1890s. Joass also had excavated brochs in Sutherland and was actively involved in the archaeology of the northern counties. In his 1899 paper to the Society of Antiquaries of London, Barry pays tribute to Joass and Anderson stating that *'it gives me the greatest pleasure to acknowledge their kindness and advice, without which I might - and probably should - have gone much astray.'*

This need for advice from others is reflected throughout the correspondence, for example, in a series of letters (NMRS MS/28/187) from Barry to Anderson.

3 September 1900 - work has stopped at the Barroch broch excavation because of the discovery of two skeletons in a chamber and Barry wants to await the arrival of Joass before continuing with the investigation of these remains.

13 September 1900 - Barry is still waiting for Joass and has written again to Anderson to provide further details of the site.

21 September 1900 - a general election has been called and Barry has to leave Caithness to return to Windsor. He writes to Anderson enclosing a sketch drawing by his son Edward showing the positions of the skeletons, and stating that he is closing the excavation down and has himself removed the skeletons to Keiss Castle.

In this instance, events had forced Barry to take a decision and to proceed on his own.

Barry himself describes his excavation methods *'Work was commenced by driving a cutting into the mound at the side facing the sea. Within a few yards we came upon the foundation of a cyclopean or uncemented stone wall, which, upon being uncovered and followed, proved to be circular. The wall was traced round on the inner side, the circle proving to be 37 feet in diameter. Having thus opened up the inner circle, several cuttings were made at a lower level into the mound, and the outer face of the wall was soon discovered'* 'Wall-chasing' was a standard excavation method amongst early archaeologists: the entry point being decided by probing, the site dug into until a wall was uncovered, the wall followed until another feature was found and so on until all the features were revealed. In effect, Barry cleared all debris from many of the sites until all the main features had become apparent,



Figure 5: Skitten, broch, 1904. The broch mound at the commencement of excavations. (C7614)



Figure 6: Keiss, broch, 1890. 'Outer circular wall'. Barry's 'wall-chasing' technique is clearly visible. (A53270)

noting in only a few instances where objects had been found or where he believed there to be a stratigraphic sequence.

It was a process of excavation that is now rightly criticised, but in some ways Barry was ahead of his contemporaries in appreciating the importance and value of recording his excavations by photography, stating himself *'Knowing how difficult it will be to preserve these ruins after having been once exposed to the effects of atmospheric alternations, I took photographs of the more important points of interest.... These will also serve the purpose of giving a better idea of the appearance and structure of these Brochs conjointly with the plans than any mere written description can possibly do.'* (1899 paper to the Society of Antiquaries of London, NMRS MS/821/2).

Although Barry became an Honorary Fellow of the Society of Antiquaries of Scotland in 1897, it was Joseph Anderson who presented to the Society an account of Barry's excavations of nine brochs (Anderson 1901) illustrating the paper with several examples of Barry's photographs and drawings. Again in the *Proceedings* (Anderson 1904) the ogam-inscribed stone that was recovered from a barn wall at Latheron and taken to Barry is described by Anderson, who also refers to a stay at Keiss Castle where he had been able to study the stone in detail. Graham (1978, 290) is perhaps a little harsh when he states the reason for Anderson presenting an account of Barry's work to the Society (1901) as being *'to save*



Figure 7: 'The Pap', Hillhead, broch, 1901. View towards entrance. Barry is standing in the passage to the right, with Mr Murdoch and John Nicolson to the left of the 'Danger' sign. (D5205)



Figure 8: Mervyn Tower, Nybster, 1971. The extraordinary monument constructed at Nybster and ornamented with an incredible variety of sculptures by John Nicolson. (CA1016 Photograph by R Lamb)



Figure 9: Keiss, broch, 1890. 'Shewing raised path to entrance to stairs'. Most photographs in the collection are mounted on board, numbered and captioned by Barry. (CA/645)

something from the wreck of improperly recorded excavations'. The inevitably partial nature of the surviving documentation can only provide limited evidence as to the role that Anderson took in all this, but it would seem that his influence was not inconsiderable and had been there from the time Barry started his investigations.

Barry excavated several sites simultaneously over a period of a few years, closing them down in some instances when he was not resident in Caithness. He employed a group of men to carry out the work and relied on his factor, John Nicolson, to supervise the excavations, as well as a Mr Murdoch, who is also regularly mentioned in the correspondence and appears in the photographs. Nicolson was interested in the history of Caithness, but it was not until the arrival of Barry that he became actively involved in archaeology. Nicolson was a skilled artist who sketched, painted and sculpted, using his talents to illustrate the excavations and many of the artefacts recovered. It was Nicolson who constructed 'Mervyn Tower' from the stone excavated from the broch at Nybster as a memorial to Barry. It is an extraordinary monument, with a stone plaque stating 'Sir F Tress Barry Bart. 1895' and decorated with several sculptured figures by Nicolson. Several of the photographs show the creation of dry-stone structures using stone from the excavations, a Barry/Nicolson trademark, and a cairn composed of quern-stones survives at the eastern edge of Keiss Castle gardens. It is the presence of such a monument at a mound known as The Carle (ND36SE 22) that suggests that it is possibly the site of a Barry (or Nicolson) excavation. After Barry's death, Nicolson continued with archaeological work becoming a corresponding member of the Society of Antiquaries of Scotland in 1911, and contributing various papers to its *Proceedings*.

The total number of sites excavated by Barry is unknown, but at least 25 are represented in the collection in the NMRS, fourteen of which are brochs. In 1911 the *Inventory of Caithness* states that Barry excavated 24 brochs (RCAHMS

1911, xxxi) while Anderson mentions twelve brochs (Anderson 1908), but there were numerous other sites that Barry uncovered, including two chambered cairns (South Yarrows, South and Shean, Stemster). In 1910, A O Curle consulted Nicolson about Barry's work, specifically enquiring whether he had any plans or photographs that he could make available to RCAHMS for inclusion in the publication (Aucam Doc 7, Northlands Viking Centre) and his assistance was duly acknowledged in the *Inventory*.

The excavated sites are spread throughout Caithness, with a cluster in the coastal area around Keiss representing some of the earliest work by Barry on his own estate. Further afield Barry was given permission to excavate by other landowners and there is only one instance known, at Bail a' Chairn, where disagreement arose, and the proprietor had the broch filled in before work was completed. It is noticeable that the sites more distant and inland from Keiss are the ones for which there are no photographs, and that Barry relied on written accounts and sketches by Nicolson for such sites as the chambered cairns at Shean and Heathercro.

Barry died on 28 February 1907 at the age of 81. The various collections of surviving material provide a fitting testimony to his years of work, and are all the more remarkable considering that Barry was aged 65 when he started his archaeological explorations.

'I have discovered little that is new, but every fresh investigation throws some further light upon these disappearing ruins, and tends to bring us nearer to a knowledge of who were the people who built and lived in them of whom at present absolutely nothing appears to be known'.

(1899 paper to the Society of Antiquaries of London, NMRS MS/821/2).

The Collection

Several collections of material relating to the archaeological work of Sir Francis Tress Barry survive in different archives or museums, a fact that is perhaps not surprising knowing that Barry himself wanted to share his discoveries, and in one instance had photographs of paintings of the 'painted pebbles' distributed 'to gain some information about them' (MS/821/7 letter 22 in the collection held in the Dunrobin Castle Museum). Although the photographs in all the collections largely duplicate each other, there are some differences, and within the NMRS a set has been built up which is, it is hoped, as complete as possible.

The Barry material within the Society of Antiquaries of Scotland collection comprises photographs, glass lantern slides, correspondence, maps and drawings, some donated to the Society (*Proc. Soc. Antiq. Soc.* 38 (1904), 252) and others sent to Joseph Anderson himself by Barry during his lifetime, keeping him informed of his work and all the Caithness discoveries. One of the letters (MS/28/470/9) suggests that Barry was supplying a copy of every photograph to Anderson, but that he had lost track of which number he had reached. The collection held in the Dunrobin Castle Museum comprises around 100 photographs, drawings and over 20 letters dating from 1895-98 between various individuals, although mainly Barry, Joass, Anderson and Nicolson. It is likely that this collection belonged originally to Joass and was acquired through regular contact and involvement with Barry. Certainly the correspondence contains frequent letters from Barry to Joass saying that photographs or finds are enclosed. Since Joass established a museum for the Duke of Sutherland which included material from brochs, the collection of Barry material would have been a natural inclusion. A hand-written list detailing Barry's photographs is in the collection and under the title the words 'received Jan. 14th 1909', possibly suggests a deposition date.

Two other collections comprising photographs are held in

Thurso Museum and Inverness Art Gallery and Museum, while the most remarkable collection is that in the Northlands Viking Centre at Auckengill. Originally the collection of John Nicolson, it contains over 500 items. The familiar Barry photographs and other material are present, interspersed with Nicolson's own personal drawings and paintings, illustrating many of the sites under excavation and the objects recovered. There are also maps, notes, correspondence, family papers and photographs, as well as a wealth of other material gathered together by Nicolson during his many years researching into the history of Caithness. The frequency with which Barry corresponded with Anderson, Nicolson and Joass has meant that in some instances material has been dispersed and separated. For example, six first edition Ordnance Survey maps in the Auckengill collection have been annotated by Barry with red spots to mark Caithness antiquities, while a further four annotated in precisely the same format are held in the NMRS. There is even correspondence at Auckengill from Barry dated 16 September 1906 to Nicolson, stating that he [Barry] has enclosed a 'plan [map] marked with red ink spots of all the archaeological places that I have been able to find upon it...I want you to go over the two plans in the same way'. Barry was trying to establish notes about all sites within the county and was using maps and newscuttings to build up a full record of what was known.

Numerous examples of printed excavation plans are dispersed through the collections, some annotated with additions from later excavations. A few of these plans and the paintings of the painted pebbles are in the collections of the Society of Antiquaries of London, as a result of Barry's direct association with the Society (Brown Portfolio 59, 67 and 79).

Through the years, Barry gifted many objects to the Society of Antiquaries of Scotland, including a stone ball from Watten, an ogam-inscribed sculptured stone from Latheron and an incised stone from Birkle Hills. Like many of his

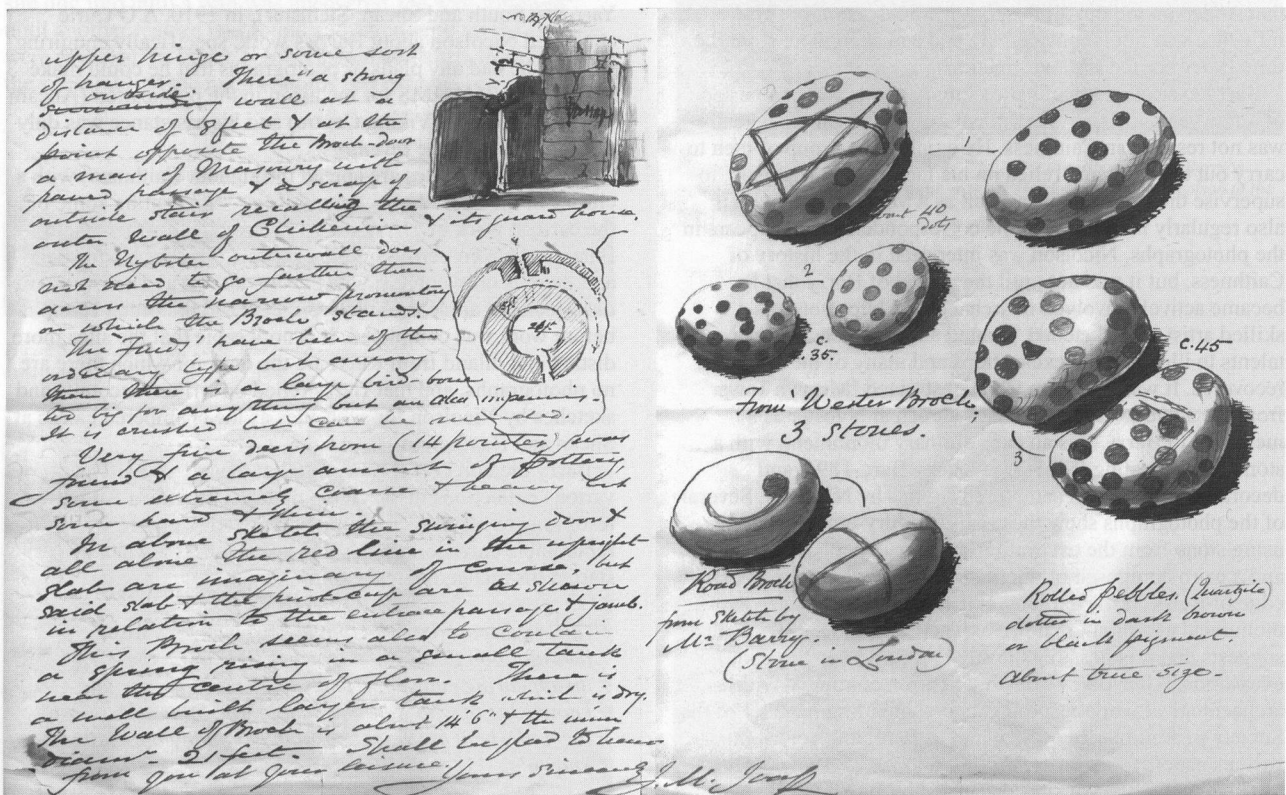


Figure 10: Letter from J Joass to J Anderson, September 30th 1895. One of several letters which demonstrate the regular communication between Barry, Joass and Anderson, discussing the excavations, significant features or artefacts. This letter discusses and illustrates the 'painted pebbles', as well as the ongoing excavations at Nybster broch. (MS/28/470/1). Anderson's reply to Joass is one of the letters amongst the material in the collection of the Dunrobin Castle Museum.

contemporaries, Barry was a collector of objects stating in a letter to Joass (MS/821/7 Letter 7) that he had been 'successful in purchasing the polished celt that you saw at the Wester for 20/-.' A collection of objects from the Sands of Luce, Wigtown, comprising flint and stone implements, jet and bronze objects and pottery, is also likely to have been acquired in this way. Other objects in the collection could represent stray finds acquired by Barry but could also reflect further trenching activity in the county. Following his death in 1907, his executors presented his extensive collection of objects, over 1400 in number, from all the Caithness excavations, to the Society of Antiquaries of Scotland.

The photographic collection in the NMRS can be divided into two, with large format photographs taken with a tripod mounted camera and 'Kodak' ones taken with a small handheld camera, which Barry is seen holding (figure 3). It is likely that Barry was responsible for much of the photography himself, devising a numbering sequence to keep track of his work, often referring to specific prints in the correspondence. Two sizes of large format prints survive - plate 6" x 8" mounted on 9" x 14" board and 9.5" x 11.5" mounted on 14" x 19" board. Sadly, the original glass negatives are not in any of the collections. Glass lantern slides were prepared from the photographs and were used by Anderson and later Barry himself to present to both the Societies of Antiquaries of London and Scotland accounts of work on the Caithness brochs.

The quality of most of the photographs is good, and the detail in many of the views, of the internal structures, the stonework or friable nature of the deposits for example, is excellent. Barry used natural light to photograph some of the excavated objects to avoid the complexities of using artificial light, photographing the stone objects on the lawn at Keiss Castle, or a skull from Ackergill on a table against the external house wall. There is only one photograph that has been taken using artificial lighting, but the delicate nature of some of the objects, particularly those of bone, would preclude moving them outside.

The catalogue of material is presented by site, and arranged in so far as possible chronologically by the approximate date of excavation as given on the material. Within each site the collections are presented in the order: photographs, drawings and manuscripts. Each entry is in the following format: NMRS item number, Barry's caption or description and his own index number (or letter), followed by an indication of the original source of the material. SAS indicates the original Society of Antiquaries of Scotland Collection number.

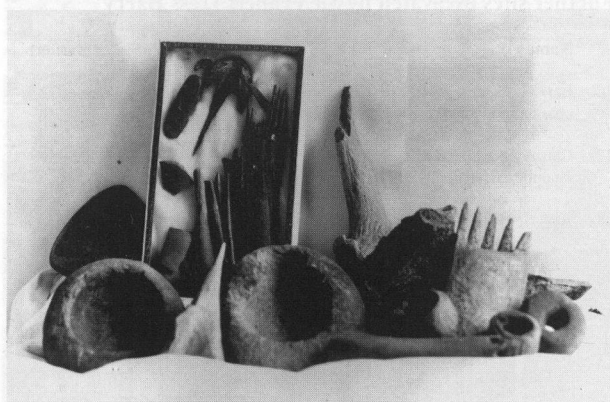


Figure 11: Photograph showing various stone and bone objects from Barry's excavations. The bone comb, seen in the right of the box, is just one of the many finds illustrated in watercolour by John Nicolson and held in the collection in the Northlands Viking Centre. (D5216)

References

- Anderson, J. (1901) Notices of nine brochs along the Caithness coast from Keiss Bay to Skirza Head, excavated by Sir Francis Tress Barry, Bart., M.P., of Keiss Castle, Caithness, *Proc. Soc. Antiq. Scot.*, 35 (1900-1), 112-149.
- Anderson, J. (1904) Notices of a sculptured stone with ogham inscription, from Latheron, presented to the National Museum by Sir Francis Tress Barry, Bart., M.P., Hon. F.S.A. Scot., Keiss Castle, Caithness; and of two sculptured stones, recently discovered by Rev. D. Macrae, B.D., at Edderton, Ross-shire, *Proc. Soc. Antiq. Scot.*, 38 (1903-4), 534-540.
- Anderson, J. (1908) Newscutting - The Brochs of Caithness. Additions to the Antiquarian Museum. *The Scotsman*, Tuesday July 21 1908.
- Barry, Sir F T. (1899) Notes on painted pebbles from the Keiss brochs, *Proc. Soc. Antiq. Lond.*, 17 (1897-9), 191-2.
- Batey, C.E. (1984) *Caithness Coastal Survey 1980-82: Dunnet Head to Ousdale*, Durham.
- Brown Portfolio. Brown Portfolio Scotland, MSS, Society of Antiquaries of London
- Davidson, J. L. and Henshall, A.S. (1991) *The Chambered Cairns of Caithness*, Edinburgh.
- Graham, A. (1978) The archaeology of Joseph Anderson, *Proc. Soc. Antiq. Scot.*, 107, 279-298.
- Laing, S. (1866) *Pre-historic Remains of Caithness*, Edinburgh.
- Nicolson, J. (1916) The exploration of the site known as Kirk Stones of Stroupster, in the parish of Wick, County of Caithness', *Proc. Soc. Antiq. Scot.*, 50, 314 -316.
- RCAHMS (1911) *Third Report and Inventory of Monuments and Constructions in the County of Caithness*, London.
- Rooney, S. and Rooney, P. (1991) *St Leonard's Hill, Windsor. House Hermitage and Hill*, Windsor.

Sites excavated by Sir Francis Tress Barry (and represented in catalogue)

Date (as suggested by material in the collection)	Site Name	NMRS no.	NGR (National Grid Reference)
1. 1890-93	Keiss, broch	ND36SE 2	ND3531 6108
2. 1890-91	Castle Linglas, broch (Wester Broch)	ND35NW 4	ND3385 5831
3. 1892-93	Whitegate, broch	ND36SE 3	ND3541 6120
4. 1893-95	'Road' Broch, Kirk Tofts, Keiss, broch	ND36SW 1	ND3488 6151
5. 1893	Keiss, buildings	ND36SE 17	ND3529 6102
6. 1894-5	Birkle Hills, Keiss middens	ND35NW 5	ND3392 5847
7. 1895-6	Nybster, broch	ND36SE 4	ND3702 6314
8. 1897	Everley, broch	ND36NE 6	ND3699 6828
9. 1897	Sgarbach, Auchingill, Promontory fort	ND36SE 5	ND3729 6375
10. 1897	Skirza Head, broch	ND36NE 2	ND3940 6844
11. 1898	Freswick Links, broch (Sands Broch)	ND36NE 5	ND3761 6761
12. 1898	Ness, broch	ND36NE 1	ND3814 6665
13. 1898	Nybster, mound	ND36SE 11	ND3665 6323
14. 1899	'Thorny Hillock', Barrock Mill, burnt mound	ND26SE 5	ND2960 6243
15. 1899	Freswick Links, midden	ND36NE 4	ND3760 6762
16. 1900	'Ring of Castle Hill', Lyth, fort	ND26SE 3	ND2828 6182
17. 1900	South Yarrows, South, chambered cairn	ND34SW 5	ND3045 4318
18. 1900-1	Hill of Works, broch	ND26SE 2	ND2903 6255
19. 1901-2	'The Pap', Hillhead, broch	ND35SE 5	ND3762 5140
20. 1902-3	'Cairn of Elsay', broch (Elsay Broch)	ND35SE 6	ND3871 5198
21. 1902	Ackergill Links, long cist cemetery	ND35SW 12	ND3487 5497
22. 1902	Ackergill Mound, cairn	ND35SW 13	ND3487 5437
23. 1904	Skitten, broch (Kilminster broch)	ND35NW 3	ND3234 5655
24. 1904	Shean, Stemster, chambered cairn	ND16SE 1	ND1742 6260

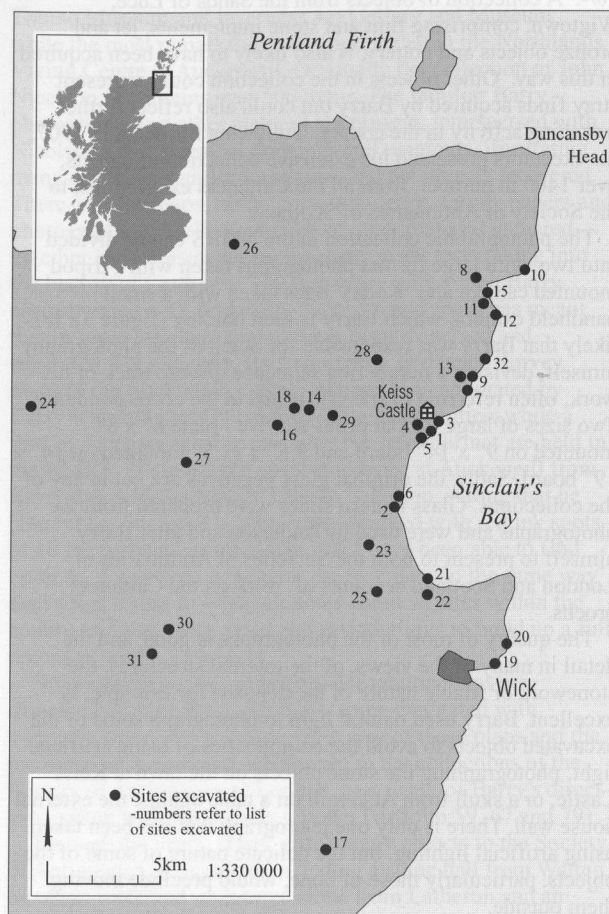


Figure 12: Map of Caithness showing the distribution of sites excavated by Barry.

Sites without dates

25. Green Hill, Reiss, broch
(Norwall broch) ND35SW 10 ND3266 5445
Position in Barry's numbering sequence would suggest 1904 or later.

Further sites excavated by Sir Francis Tress Barry

Name	NMRS No.	Source (of information)
26. Earl's Cairn, chambered cairn	ND26NE 2 ND 2629 6973	RCAHMS 1911, no. 72
27. Cairn of Heathercro, chamberedcairn, c. 1904	ND26SW 2 ND 2431 6017	RCAHMS 1911, no. 5
28. Kirk Stones, settlement	ND36SW 6 ND 3267 6475	Nicolson 1916, 314-16
29. Quintfall, Howe, cairn	ND36SW 4 ND 3091 6164	RCAHMS 1911, no. 579
30. Cuckoo Hill, cairn	ND25SW 5 ND 2357 5277	RCAHMS 1911, no. 480
31. Bail a' Chairn, broch, 1904	ND25SW 8 ND 2281 5171	RCAHMS 1911, no. 466
32. The Carle', mound ND 3780 6449	ND36SE 22	Batey 1984, no. 80 OS field investigator 1982.

Figure 13: Road Broch, Kirk Tofts, Keiss, 1893. 'Secondary wall'. This photograph was taken at an early stage in the excavations, and provides an indication of the massive scale of the work undertaken by Barry in clearing such a quantity of friable stone and soil to reveal the full broch structure as in figure 14. (C7609)

Donations to the Royal Museum of Scotland as detailed in *PSAS*

Watten, stone ball White Broch, Keiss, clay jar	<i>Proc. Soc. Antiq. Scot.</i> , 27 (1893), 42
Birkle Hills, sculptured stone Road Broch, Keiss, disc	<i>Proc. Soc. Antiq. Scot.</i> , 29 (1895), 272-4
Sands of Luce Bay, Wigtownshire Flint and stone implements, jet and bronze objects, pottery	<i>Proc. Soc. Antiq. Scot.</i> , 37 (1902-3), 143-4
Hill of Works, clay jar Photographs of brochs (94)	<i>Proc. Soc. Antiq. Scot.</i> , 38 (1904), 252
Latheron, ogham inscribed stone Smerral, oblong wooden dish	<i>Proc. Soc. Antiq. Scot.</i> , 39 (1905), 117-18
Large collection of over 1400 objects, mainly from the broch excavations	<i>Proc. Soc. Antiq. Scot.</i> , 43 (1908-9), 11-20

Other finds not associated with any of Barry's excavations and deposited in the Royal Museum of Scotland (as deposited and listed in *Proc. Soc. Antiq. Scot.*, 43 (1908-9), 11-20)

	NMRS no.	NGR
Harland, stone whorl	ND35SW 15	ND 328 536
Ackergill, spearhead (from cairn)	ND35SW 13	ND 3487 5437
Thuster, stone cup (from broch)	ND35SW 6	ND 3004 5254
Skitten, pottery	ND35NW 11	ND 318 570
Moss of Tannoch, wooden dish	ND34NW 9	ND 32 47
Loch Hempriggs, wooden dishes	ND34NW 8	ND34 47
Mey, bronze sword	ND27SE 10	ND 28 72
Keiss, flanged bronze axe	ND36SW 8	ND 34 61
Keiss, food vessel	ND36SW 9	ND 34 61
Keiss, stone whorl and glazed pebbles	ND36SW 10	ND 34 61
Green Hill of Clayton ² , bone pin, whorl, amber bead, jet ring, black glass bead	ND36SW 7	ND 3347 6335
Hollandmey, bone ring	ND27SE 3	ND 2929 7083

Brabster, bone needle	c.ND36/26	
Loch Alterwal, bone implements, jet armlet, candle stick	ND26SE 6	ND2794 6453
Swordale Hill, food vessel	NH56NE	NH57 66

Notes. The Carle and Green Hill of Clayton

1. There is no documentary evidence that this site was excavated by Barry. However, the presence of a stone monument constructed from excavation spoil is similar to others found on Barry's excavations.
2. These finds came from 'Keiss moor mound' which can possibly be identified with Green Hill of Clayton.

Other Collections holding Sir Francis Tress Barry Material

Inverness Museum and Art Gallery Castle Wynd Inverness IV2 3ED	<i>Excavation photographs</i>
---	-------------------------------

Northlands Viking Centre Auckengill Caithness KW1 4XP	<i>John Nicolson material including drawings, photographs, correspondence and artefacts</i>
--	---

Thurso Heritage Museum Town Hall High Street Thurso KW14 8AG	<i>Excavation photographs</i>
--	-------------------------------

Society of Antiquaries of London Burlington House London W1V 0HS	<i>Drawings, plans</i>
---	------------------------



Figure 14: Road Broch, Kirk Tofts, Keiss, 1893. 'Room in wall, entrance to second stairs'. The internal room divisions are emerging from the ground surface. (A53275)

Catalogue of the Sir Francis Tress Barry Collection

1890-3

Keiss Broch

ND 36 SE 2 ND 3531 6108

Photographs

1. **CA 635** Excavation photograph. 'Broch of Keiss. 1890. Interior entrance to stone steps in wall.' Additional annotations showing 'Well' and 'Building in debris.' F T Barry 'B'. Also glass lantern slide. SAS 187.
2. **CA 637** Excavation photograph. 'Keiss Broch. Stairs in wall. 1890.' Additional annotations showing 'Entrance from interior' and 'outside of wall.' F T Barry 'E'. SAS 187.
3. **CA 636** Excavation photograph. 'Keiss Broch. Interior. 1890.' Additional annotation showing 'modern wall.' F T Barry 'F'. Also glass lantern slide. SAS 187.
4. **CA 645** Excavation photograph. 'Keiss Broch. 1890. Showing raised path to entrance to stairs. Additional annotations showing position of 'Well' and 'Building on debris.' F T Barry no. 2 or 'C'. SAS 187.
5. **A 53272** Excavation photograph. 3 copies. 'Keiss Broch. Entrance viewed from inside. 1892.'; 'Keiss' Broch. Entrance as seen from inside.' and 'Keiss Broch. Entrance passage from inside. 1892.' F T Barry no. 7. SAS 187.
6. **CA 640** Excavation photograph. 2 copies. 'Keiss' Broch. Entrance as seen from inside. Stone door.' and 'Keiss Broch. Entrance viewed from inside. 1892.' F T Barry no. 8. Also glass lantern slide. SAS 187.
7. **C 7620** Excavation photograph. 2 copies. 'Keiss Broch. Foundation under secondary wall. 1892.' and 'Keiss' Broch. Debris under secondary wall.' This second copy was printed from a cracked glass negative. F T Barry no. 9. SAS 187.
8. **CA 639** Excavation photograph. 3 copies. 'Keiss Broch. Outside circular wall showing steps in wall. 1892.'; 'Keiss Broch. Outer wall showing steps in the wall. 1892.' and 'Keiss' Broch. Outside circular wall showing steps in wall.' F T Barry no. 10. Also glass lantern slide. SAS 187.
9. **C 7530** Excavation photograph. 2 copies. 'Keiss Broch. Junction of secondary wall with inner circle. 1892.' and 'Keiss' Broch. Junction of secondary wall with inner broch wall.' F T Barry no. 11. SAS 187.
10. **CA 643** Excavation photograph. 3 copies. 'Keiss Broch. Entrance viewed from outside.'; 'Keiss Broch. Outer circular wall. Entrance. 1892.' and 'Keiss Broch. Supposed entrance viewed from outside. 1892.' F T Barry no. 12. SAS 187.
11. **A 53270** Excavation photograph. 4 copies. 'Keiss Broch. Outside circular wall. 1892.'; 'Keiss Broch'. Outside circular wall. 1892.'; 'Keiss Broch. Outer circular wall. 1892.' and 'Keiss' Broch. Outside circular wall of broch.' F T Barry no. 13. Also glass lantern slide. SAS 187.
12. **CA 638** Excavation photograph. 3 copies. 'Keiss' Broch. Circular chamber outside.'; 'Keiss Broch. Circular habitation. Outside. 1892.' and 'Keiss Broch. Circular room at end of outside passage. 1892.' F T Barry no. 14. Also glass lantern slide annotated 'Circular room at end of outside passage.' SAS 187.
13. **CA 644** Excavation photograph. Large format. 'Keiss Broch. 1891.' Additional annotations showing positions of the 'Entrance to stairs in wall.'; the 'Well'; 'Construction on debris' and 'Cavity where Samian Ware was found.' F T Barry no. 26. Also glass lantern slide. SAS 187.
14. **A 40435** Excavation photograph. 4 copies. 'Keiss' Broch. Entrance from outside. Stone slab door in situ. 1893.' and 'Keiss' Broch. Secondary entrance. Stone door in situ.' F T Barry no. 52. Also glass lantern slide. SAS 187.
15. **C 9105** Excavation photograph. 'Entrance from inside. Stone slab door in situ. 1893.' F T Barry no. 54. Copied from original photograph in collection in Dunrobin Castle Museum.
16. **C 9106** Photograph. 'Querns, Stone Vessels, Worked Stones, etc. 1893.' F T Barry no. 63. Copied from original photograph in collection in Dunrobin Castle Museum.
17. **A 53271** Photograph. 2 copies. 'Keiss' Broch. Querns, stone vessels, worked stones etc. 1894.' F T Barry no. 65. Also glass lantern slide. SAS 187.

Drawings

18. **DC 33648** Photo-litho print (by Whiteman & Bass, London) titled 'Plan of Broch at Keiss, Caithness'. Excavated features are listed and briefly described. Pencil annotations illustrate additional features. Size: 336mm x 212mm. SAS 410.
 19. **DC 33649** Tracing of a plan of the broch at Keiss. Black ink on tracing paper. Scale: 1/8":1'. Size: 292mm x 335mm. SAS 410.
 20. **DC 33650** Plan of the broch at Keiss titled '4th October 1890. Plan of broch at Keiss, N.B. Scale _ inch to the foot.' Black ink. Size: 765mm x 559mm. SAS 410. (Photographic copy is number B75575).
 21. **DC 33656-8** Three coloured prints, two annotated by Barry 'Painted pebbles from the Keiss Brochs, 1895-7' and signed C Pretorius. Size 316mm x 254mm. SAS 187.
 22. **DC 33659** Print showing drawings of painted pebbles from the Keiss Brochs, 1895-7, signed C Pretorius. 380mm x 255mm. SAS 187. Also glass lantern slide D5301. A further copy annotated by Barry 'Painted stones from the Keiss Brochs 1895-7' is amongst miscellaneous papers held in the collection in Dunrobin Castle Museum and photocopied by the NMRS (MS 821/6).
- ### Manuscripts
23. **MS 821/6** Included amongst miscellaneous drawings and sketches relating to the archaeological work of Sir Francis Tress Barry and copied from the collection in Dunrobin Castle Museum is a photo-litho 'Plan of Broch at Keiss, Caithness' with excavated features listed and briefly described. Earlier than DC 33648 (above).
 24. **MS 821/2** Photocopy of booklet 'Prehistoric Brochs of Caithness. A Paper. Read by Sir Francis Tress Barry, Bart., F.S.A., and Hon. Mem. S.A.S., at a meeting of the Society of Antiquaries in London on June the 8th 1899'. Copied from an original booklet in the collection in Dunrobin Castle Museum.
 25. **MS 28/470/2** Descriptive hand-written account of various stone artefacts headed 'From Golspie Links, Oct. 1895' by the Reverend J Joass. Stone objects likely to be from the Keiss brochs. Account proceeds to analyse possible runic inscription from Keiss. SAS 470.



Figure 15: Everley, broch. Workmen feature regularly in Barry's photographs, sometimes as human scales, but this is the only 'posed' example. (C7562)



Figure 16: 'The Pap', Hillhead, broch. 'Entrance passage from inside'. Barry realised the need to photograph significant features which could not be recorded visually in any other way. This is one of several photographs which show the use of timber supports, a reminder of Barry's mining background. (C7591)



Figure 17: Nybster, broch, 1895. 'Entrance passage at centre of broch, excavated'. John Nicolson stands in the broch centre in a position similar to one adopted 4 years later when Erskine Beveridge visited the site (see Figure 18). (A53265)

1890-1891

Castle Linglas, Caithness Broch

ND 35 NW 4 ND 3385 5831

Photographs

26. C 9407 Photograph of drawing of painted pebbles. Copied from original photograph in collection in Dunrobin Castle Museum.
27. C 7606 Excavation photograph. 'Keiss "Wester Broch". Entrance.' F T Barry print 'A'. SAS 187.
28. C 9450 Excavation photograph. 'Foundation of outer wall.' 2 copies. F T Barry no.3 or 'D'. SAS 187.
29. C 7611 Excavation photograph. 2 copies. 'Wester Broch. Outside circular wall' F T Barry no. 3 or 'D'. 'Keiss "Wester Broch". Foundation of outer wall. 1890.' F T Barry 'D'. SAS 187.
30. C 7621 Excavation photograph. 'Wester Broch. Keiss. Outside habitation. 1891.' Additional annotations showing 'Sand Hills', 'Centre of broch' and 'Circular wall of broch'. Also glass lantern slide annotated 'Outside habitation 1891 showing sandhills, centre of broch and circular wall of broch.' F T Barry no. 23. SAS 187.
31. C 7622 Excavation photograph. Large format. 'Keiss Wester Broch. Interior looking S. 1891.' Additional annotation showing position of 'cist'. F T Barry no. 24. SAS 187.
32. A 53285 Excavation photograph. Large format. 'Keiss Wester Broch. Interior looking W. Entrance passage. 1891.' F T Barry no. 25. Also glass lantern slide. SAS 187.
33. C 7623 Excavation photograph. Large format. 2 copies. 'Keiss, Wester Broch. Interior looking E. 1891.' and 'Keiss "Wester Broch". Interior looking east.' F T Barry no. 27. SAS 187.
34. C 7624 Excavation photograph. Large format. 'Keiss "Wester Broch". Interior looking north.' F T Barry no.28. SAS 187.
35. C 7612 Excavation photograph. Large format. 'Keiss "Wester Broch". The mound at commencement of excavation. 189[?]. F T Barry no. 29. SAS 187.
36. A 53284 Photograph. 3 copies. Illustrates stone objects from 'Keiss "White Broch" and "Wester Broch" 1894.' F T Barry no. 75 or 'O'. SAS 187.

Drawings

37. DC 33654 Photo-litho print (by Whiteman & Bass, London) titled 'Plan of broch at Wester Keiss, Caithness'. Yellow wash highlighting features. 336mm x 212mm. SAS 187.
38. D 5303 S Glass lantern slide: 'Plan of Broch at Wester, Keiss, Caithness.' SAS 187.

Manuscripts

39. MS 28/470/1 Letter from Reverend J Joass, Golspie to Dr J Anderson, September 30 1895, containing sketch drawings of the painted pebbles found at Wester and Road Broch. The letter also describes the ongoing excavations at the Freswick broch [he means Nybster] and includes a sketch plan and reconstruction of the door. SAS 470.



Figure 18: Nybster, broch, 1899. Photograph by Erskine Beveridge. (CA/78)

1892-1894 Whitegate Broch

ND 36 SE 3 ND 3541 6120

Photographs

40. C 7615 Excavation photograph. 2 copies. 'Keiss "White Broch". Slab roof over part of room. 1892.' and 'Keiss White Broch. Portion of roof. Outer habitation. 1892.' F T Barry no. 1. SAS 187.
41. C 7616 Excavation photograph. 2 copies. 'Keiss White Broch. Outer habitation. 1892.' and "'White" Broch. Interior of outside habitation.' F T Barry no. 2. SAS 187.
42. C 7617 Excavation photograph. 2 copies. 'Keiss White Broch. Slab roof over outside habitation. 1892.' and 'Keiss White Broch. Portion of roof to outer habitation. 1892.' F T Barry no. 3. SAS 187.
43. C 7618 Excavation photograph. 2 copies. 'Keiss White Broch. Large stones in wall of outside habitation. 1892.' and 'Keiss White Broch. Large stones in wall. Outer habitation. 1892.' F T Barry no. 4. SAS 187.
44. C 7529 Excavation photograph. 2 copies. 'Keiss White Broch. Outside habitation showing part of roof. 1892.' and 'Keiss White Broch. Outer habitation. 1892.' F T Barry no. 5. SAS 187.
45. C 7619 Excavation photograph. 'Keiss White Broch. Large stones in wall. Outer habitation. 1892.' F T Barry no. 6. SAS 187.
46. C 7531 Excavation photograph. 3 copies. 'Keiss White Broch. Interior.'; "'White" Broch. Slab enclosure where urn found.' and 'Keiss White Broch. Slab enclosure where pieces of urn were found. 1892.' F T Barry no. 15. SAS 187.
47. C 7532 Excavation photograph. 3 copies. "'White" Broch. Entrance viewed from inside.'; 'Keiss White Broch. Entrance viewed from inside. 1892.' and 'Keiss White Broch. Interior.' F T Barry no. 16. SAS 187.
48. C 7607 Excavation photograph. 2 copies. "'White" Broch. Circular room on top of ruined wall.' and 'Keiss White Broch. Inner circle. Circular room on the top of the wall (secondary). 1892.' F T Barry no. 17. SAS 187.
49. C 7608 Excavation photograph. 2 copies 'Keiss White Broch. Outside entrance. The inner circle of the broch is on the other side of the stone dyke. 1892.' and "'White Gate" Broch. Outside entrance.' F T Barry no. 18. SAS 187.
50. A 40436 Excavation photograph. 2 copies. "'White" Broch. Entrance passage. Lintel.' and 'Keiss "White Broch". Entrance passage. 1893.' F T Barry no. 53. Also glass lantern slide. SAS 187.
51. A 53284 Photograph. 3 copies. Illustrates stone objects from 'Keiss "White Broch" and "Wester Broch" 1894.' F T Barry no. 75 or 'O'. SAS 187.
52. C 7551 Excavation photograph. 2 copies. 'Keiss "White" Broch. Stones on the shore, below spring tides. 1895.' F T Barry no. 84. Also glass lantern slide. SAS 187.

Drawings

53. DC 33656-8 Three coloured prints, two annotated by Barry 'Painted pebbles from the Keiss Brochs, 1895-7' and signed C Pretorius. Size 316mm x 254mm. SAS 187.
54. DC 33659 Print showing drawings of painted pebbles from the Keiss Brochs, 1895-7, signed C Pretorius. 380mm x 255mm. Also glass lantern slide D5301. A further copy annotated by Barry 'Painted stones from the Keiss Brochs 1895-7' is amongst miscellaneous papers held in the collection in Dunrobin Castle Museum and copied by the NMRS (MS 821/6). Also glass lantern slide D5301. SAS 187.

55. D 5302 S Glass lantern slide. 'Plan of White Gate Broch, Keiss, Caithness.' SAS 187.

Manuscripts

56. MS 28/470/2 Descriptive hand-written account of various stone artefacts headed 'From Golspie Links, Oct. 1895' by the Reverend J Joass. Stone objects likely to be from the Keiss brochs. Account proceeds to analyse possible runic inscription from Keiss. SAS 470.

1893-1895

'Road' Broch, Kirk Tofts, Keiss Broch

ND 36 SW 1 ND 3488 6151

Photographs

57. C 9410 Photograph of inscribed sandstone disc. Copied from original photograph in collection in Dunrobin Castle Museum. Also glass lantern slide in SAS 187.

58. C 9411 Photograph of inscribed sandstone disc. Dated 1893. Copied from original photograph in collection in Dunrobin Castle Museum. Also glass lantern slide in SAS 187.

59. C 7533 Excavation photograph. 2 copies. 'Keiss "Road Broch"'. Spot where excavations commenced. 1893.' F T Barry no. 33. Also glass lantern slide. SAS 187.

60. C 7609 Excavation photograph. 'Keiss "Road Broch"'. Secondary wall. 1893.' F T Barry no. 34. Also glass lantern slide. SAS 187.

61. C 7610 Excavation photograph. 2 copies. "'Keiss Road Broch"'. Entrance from the interior during excavation. 1893.' F T Barry no. 36. Also glass lantern slide. SAS 187.

62. C 7534 Excavation photograph. 3 copies. "'Road" Broch. Interior. Guard room in passage.' and 'Keiss "Road Broch" Interior. Guard room in entrance passage. 1893.' Barry is in the centre of the photograph. F T Barry no. 37. Also glass lantern slide. SAS 187.

63. C 7535 Excavation photograph. 2 copies. 'Keiss "Road Broch"'. Interior showing entrance passage. 1893.' F T Barry no. 38. SAS 187.

64. A 53278 Excavation photograph. 2 copies. 'Keiss "Road Broch"'. Entrance passage from outside circle. 1893.' F T Barry no. 39. SAS 187.

65. A 53273 Excavation photograph. 4 copies. 'Keiss "Road Broch"'. Room in wall. Entrance to second stairs.; "'Road" Broch. Chamber in wall. Entrance 2nd stairs.; and 'Keiss "Road Broch"'. Rooms in wall. 1893.' F T Barry no. 40. Also glass lantern slide annotated 'Room in wall and entrance to second stairs.' SAS 187.

66. C 7536 Excavation photograph. 2 copies. 'Keiss Road Broch. Interior, standing slabs. 1893.' and "'Road" broch. Interior. Standing stones.' Barry is standing in centre of photograph. F T Barry no. 41. Also glass lantern slide. SAS 187.

67. C 7537 Excavation photograph. 2 copies. "'Road" Broch. Recess in wall. Water tank.' F T Barry no. 42. SAS 187.

68. A 53273 Excavation photograph. 2 copies. 'Keiss "Road Broch"'. Entrance to steps in wall. 1893.' F T Barry no. 43. Also glass lantern slide annotated SAS 187.

69. C 7538 Excavation photograph. 4 copies. 'Keiss "Road" Broch. Entrance to steps in wall. 1893.' F T Barry no. 44. Also glass lantern slide. SAS 187.

70. C 7539 Excavation photograph. 'Keiss "Road Broch"'. Large slab. Secondary buildings. 1893.' F T Barry no. 45. Also glass lantern slide. SAS 187.

71. A 53279 Excavation photograph. 'Keiss "Road Broch"'. Circular construction outside entrance. 1893.' F T Barry no. 46. Also glass lantern slide. SAS 187.

72. C 7541 Excavation photograph. "'Road" Broch. Circular construction outside entrance.' F T Barry no. 47. Also glass lantern slide. SAS 187.

73. C 7542 Excavation photograph. 3 copies. 'Keiss "Road Broch"'. Steps in wall. 1893.' and "'Road" Broch. 12 steps in wall.' F T Barry no. 48. Also glass lantern slide. SAS 187.

74. A 53276 Photograph. 3 copies. "'Keiss Road Broch"'. Saddle querns, querns, stone vessels. 1894.' 1 copy annotated on reverse 'Saddle querns 2 feet by 1 average.' F T Barry no. 64. Also glass lantern slide. SAS 187.

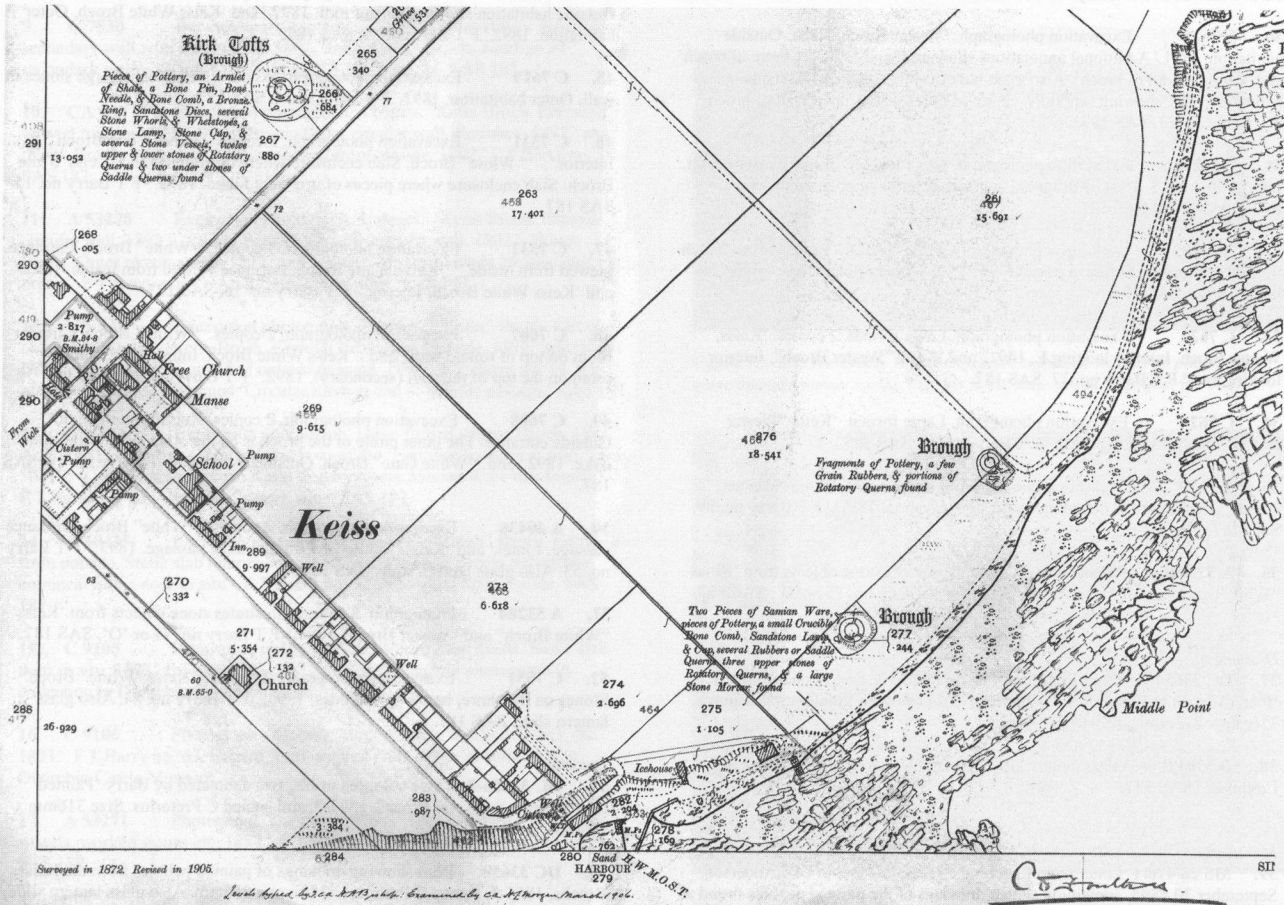


Figure 19: OS second edition map of Caithness, 1:2500, sheets xiv.9. & 13, surveyed 1872, revised 1905. Outline plans and brief listings of artefacts recovered from Barry's excavations were depicted on the map.

75. C 7544 Excavation photograph. 2 copies. 'Keiss "Road Broch"'. Encircling wall to right. 1894.' F T Barry no. 68. SAS 187.
76. C 7545 Excavation photograph. 2 copies. 'Keiss "Road Broch"'. North steps in wall. 1894.' F T Barry no. 69. SAS 187.
77. C 7546 Excavation photograph. 2 copies. 'Keiss "Road Broch"'. Underground habitations outside broch. 1894.' and "'Road" Broch. Beehive habitations outside.' F T Barry no. 70. SAS 187.
78. C 7547 Excavation photograph. 2 copies. 'Keiss "Road Broch"'. Outside habitation near entrance in encircling wall. 1894.' F T Barry no. 71. SAS 187.
79. A53277 Excavation photograph. 3 copies. 'Keiss "Road Broch"'. Corner of encircling wall on the right. 1894.' F T Barry no. 72. SAS 187.
80. C 7548 Excavation photograph. 3 copies. 'Keiss "Road Broch"'. Outer and inner wall. 1894.' F T Barry no. 73. SAS 187.
81. A 53274 Excavation photograph. 2 copies. 'Keiss "Road Broch"'. Entrance encircling wall. 1894.' and "'Road" Broch. Main entrance of encircling wall. F T Barry no. 74. SAS 187.
82. C 7549 Excavation photograph. 'Keiss "Road Mound"'. Upstanding stone. 2 feet wide. 1895.' F T Barry no. 80. SAS 187.
83. C 7550 Excavation photograph. 2 copies. 'Keiss "Road Mound"'. Upstanding stone. 2 feet high. 1895.' and 'Keiss "Road Mound"'. Inscribed stone. 1895.' F T Barry no. 81. SAS 187.
84. C 9115 Excavation photograph. 'Underground habitation near Well. 1895.' F T Barry no. 82. Copied from original photograph in collection in Dunrobin Castle Museum.

Drawings

85. DC 33651 Photo-litho print (by Whiteman & Bass, London) titled 'Plan of the Road Broch at Keiss, Caithness.' Annotated in ink by Barry with the date '1897' and a sketch of the discovered grave. Size: 336mm x 212mm. Originally included in letter from Barry as caption reads 'Grave that we opened when you were here and found empty.' SAS 187.



Figure 20: 'Road' Broch, Kirk Tofts, Keiss, 1991. The RCAHMS aerial photograph clearly shows the outline of the broch and surrounding structures as revealed by Barry's excavations. (B49636)



Figure 21: 'The Pap', Hillhead, broch, 1901. (A53283)

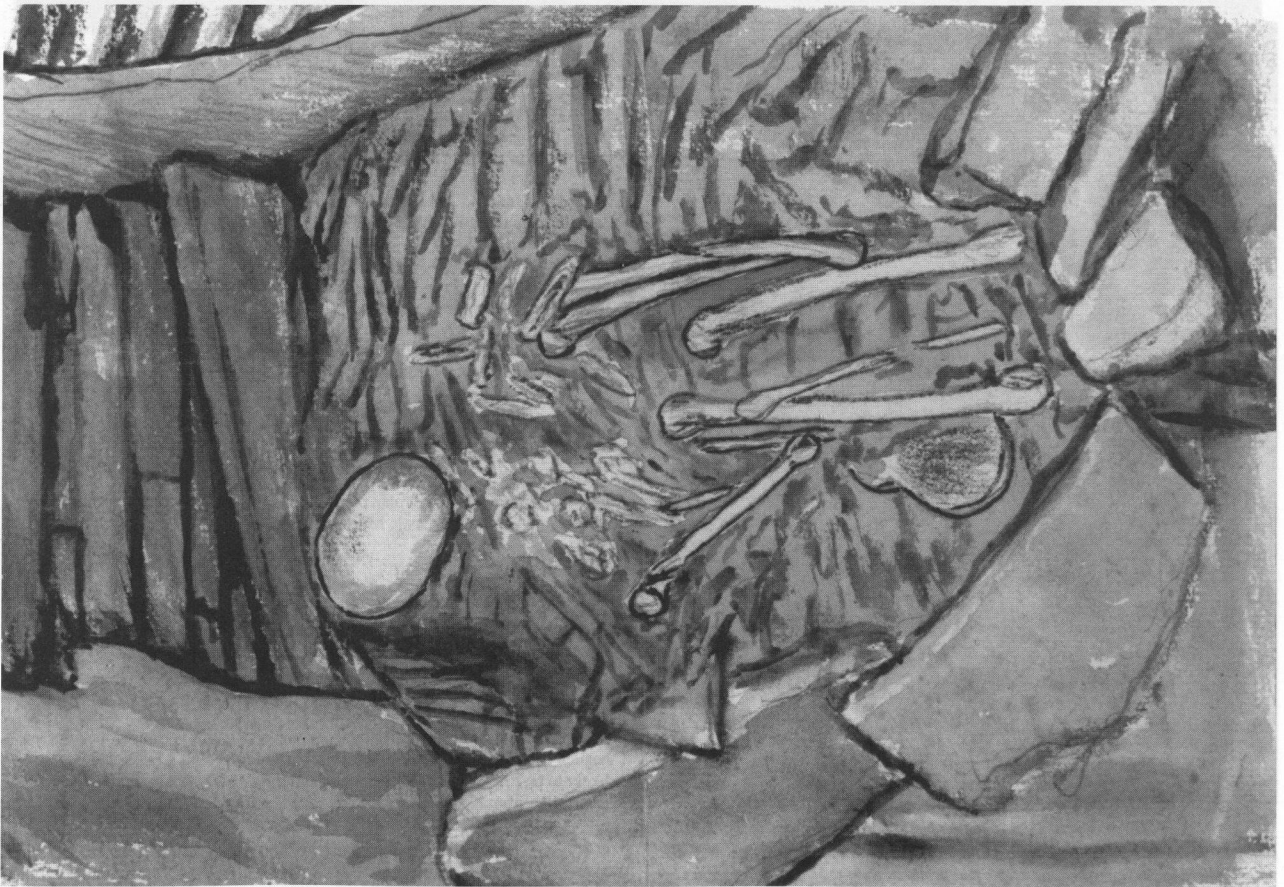


Figure 22: Shean, Stemster, chambered cairn, 1904. Watercolour drawing by John Nicolson, showing the crouched skeleton discovered by Barry. This is only one of several examples which show how the various collections in different locations complement each other. This watercolour is from the collection in the Northlands Viking Centre, but several sketches, as well as correspondence within the NMRS provide additional details. (B13575/CN)



Figure 23: Road Broch, Kirk Tofts, Keiss, 1893. 'Interior, standing slabs'. Barry (in sola tope) leaning against an upright slab at the broch entrance. His home, Keiss Castle, is in the top left of the picture with the ruined castle to the right. (C7536)

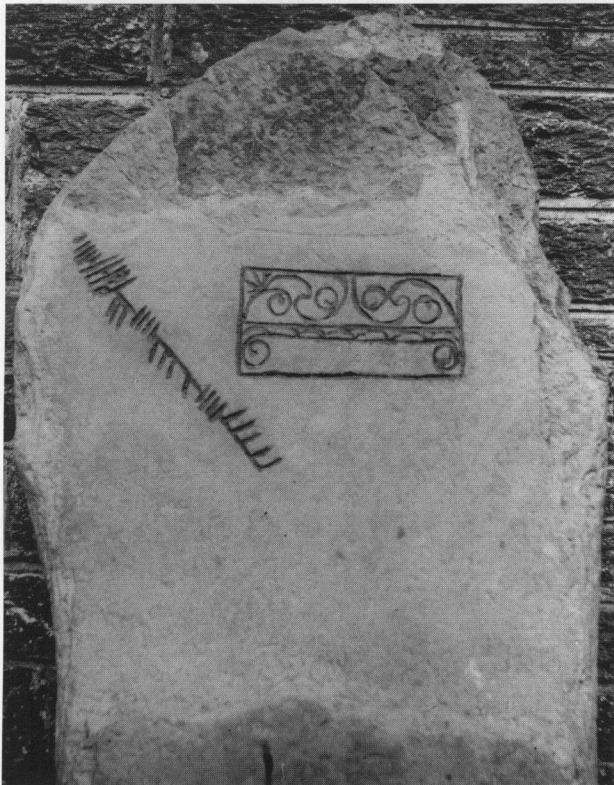


Figure 24: Ackergill Links, Pictish symbol stone. The details of the rectangular symbol and ogam inscription have been highlighted for photography, probably with chalk. The surviving section of the fish symbol along the upper edge of the slab has not been recognised. (C9412)

86. DC 33652 Photo-litho print (by Whiteman & Bass, London) titled 'Plan of Road Brock at Keiss, Caithness'. Yellow wash highlighting features. Size: 336mm x 212mm. SAS 187.

87. DC 33653 Photo-litho print (by Whiteman & Bass, London) titled 'Plan of "Road Brock" at Keiss, Caithness'. Yellow and blue wash highlighting features. Size: 336mm x 212mm. SAS 187.

88. DC 33656-8 Three coloured prints, two annotated by Barry 'Painted pebbles from the Keiss Brochs, 1895-7' and signed C Pretorius. Size 316mm x 254mm. SAS 187.

89. DC 33659 Print showing drawings of painted pebbles from the Keiss Brochs, 1895-7, signed C Pretorius. 380mm x 255mm. Also glass lantern slide D5301. A further copy annotated by Barry 'Painted stones from the Keiss Brochs 1895-7, is amongst miscellaneous papers held in collection in Dunrobin Castle Museum and copied by the NMRS (MS 821/6). Also glass lantern slide D5301. SAS 187.

90. D 5304 S Glass lantern slide. 'Plan of Road Brock at Keiss, Caithness.' SAS 187.

91. B 75576 Rough plan of broch. Copied from original drawing in the collection in Dunrobin Castle Museum.

Manuscripts

92. MS 28/470/1 Letter from Reverend J Joass, Golspie to Dr J Anderson, September 30 1895, containing sketch drawings of the painted pebbles found at Wester and Road Broch. The letter also describes the ongoing excavations at the Freswick broch [he means Nybster] and includes a sketch plan and reconstruction of the door. SAS 470.

93. MS 28/470/2 Descriptive hand-written account of various stone artefacts headed 'From Golspie Links, Oct. 1895' by the Reverend J Joass. Stone objects likely to be from the Keiss brochs. Account proceeds to analyse possible runic inscription from Keiss. SAS 470.



Old Keiss Castle
 "Keiss Broch" Entrance from outside. Stone slab in situ.

Figure 25: Keiss, broch, 1893. 'Entrance from outside. Stone slab in situ'. (A40435)

1893
Keiss
Buildings
 ND 36 SE 17 ND 3529 6102

Photographs
 94. C 7543 Excavation photograph. 2 copies. "'Castle Linglas'? Keiss Village. 1893.' FT Barry no. 55. Also glass lantern slide. SAS 187.

1895-6
Nybster
Broch
 ND 36 SE 4 ND 3702 6314

Photographs
 95. C 7552 Excavation photograph. 2 copies. "'Nybster Broch'. Entrance through outer wall. 1895.' FT Barry no. 85. SAS 187.

96. A 53263 Excavation photograph. 3 copies. "'Nybster Broch'. Showing the entrance passage. 1895.' FT Barry no. 86. SAS 187.

97. A 53265 Excavation photograph. 2 copies. "'Nybster Broch' during excavations. 1895.' FT Barry no. 87. SAS 187.

98. C 7553 Photograph showing ribbed quern. "'Nybster Broch' 1896.' FT Barry no. 90. SAS 187.

99. C 7555 Excavation photograph. 2 copies. "'Nybster Broch'. Underground habitations. Tanks. 1896.' Second copy printed from cracked glass negative. FT Barry no. 94. SAS 187.

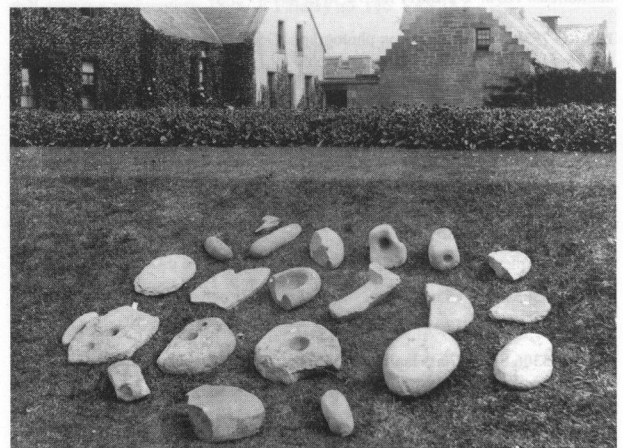


Figure 26: Keiss, broch, 1894. 'Querns, stone vessels, worked stones, etc.' In 1894, Barry displayed and photographed the stone objects from his excavations at Keiss, Whitegate and 'Road' brochs on a lawn bank in his garden. This was a method he used on several other occasions, presumably to utilise natural light. (C9106, copied from an original photograph in the collection in the Dunrobin Castle Museum).

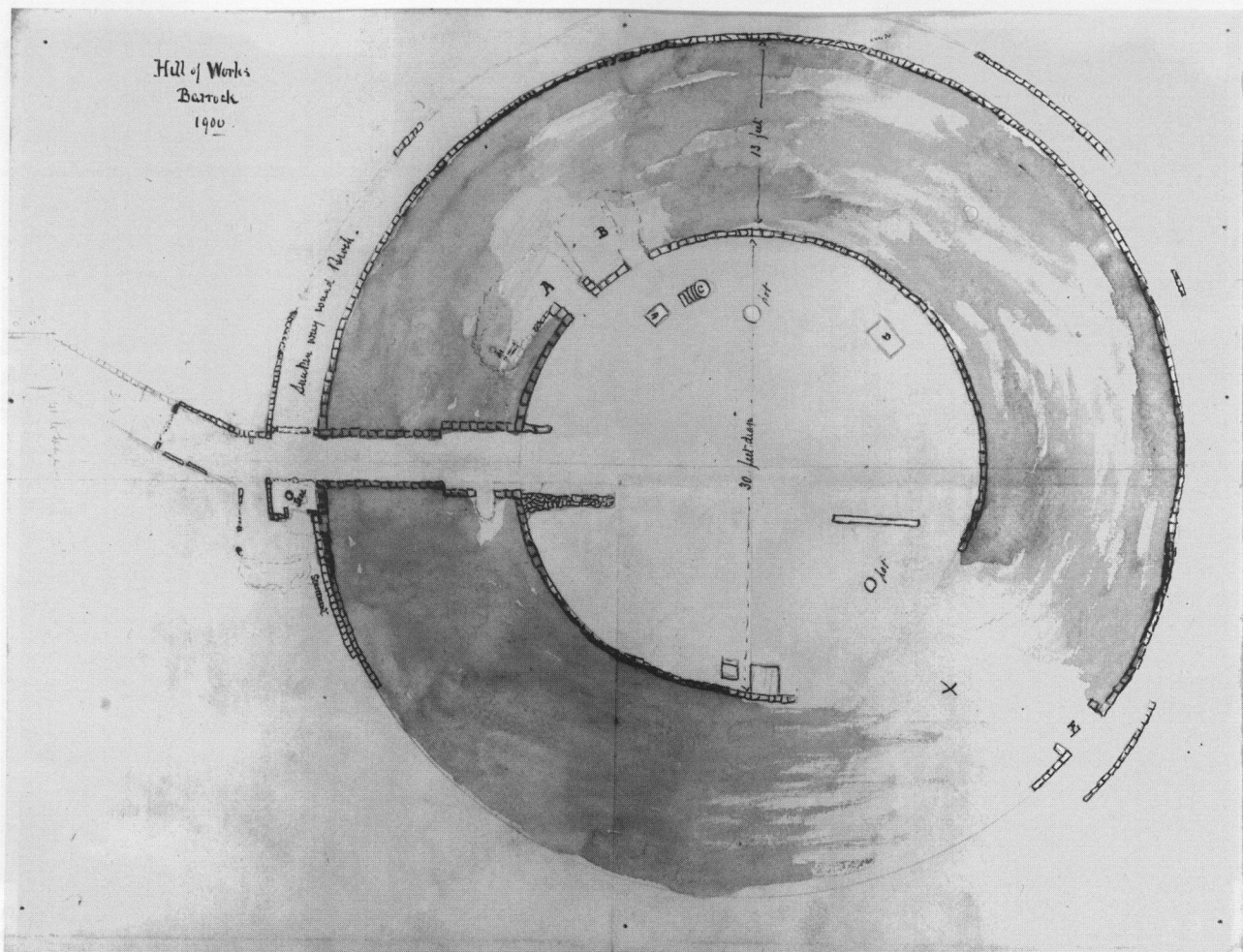


Figure 27: Hill of Works, broch, 1900. One of several original drawings in the collection prepared in ink and wash, showing the plan of excavations, with measurements and annotated features. (D5202)

100. C 7556 Excavation photograph. "Nybster" Broch. Underground habitations.' F T Barry no. 96. SAS 187.

101. C 7557 Excavation photograph. "Nybster Broch". Interior. Entrance and stone seat. 1896.' F T Barry no. 97. SAS 187.

102. C 7558 Excavation photograph. "Nybster" Broch. Outlying habitations. 1896.' F T Barry no. 98. SAS 187.

103. C 7559 Excavation photograph. General view towards broch showing monument constructed on the site by J Nicolson. "Nybster" Broch. Where figure is.' F T Barry no. 99. SAS 187.

104. C 7560 Excavation photograph. 2 copies. "Nybster" Broch. Entrance thro' outer wall. 1896.' One copy has the additional annotation in pencil 'This wall was rebuilt by Mr Nicolson.' F T Barry no. 100. SAS 187.

105. A 53264 Photograph. "Nybster Broch". Worked stone objects.' F T Barry no. 102. SAS 187.

Drawings

106. D 5305 S Glass lantern slide. 'Plan of Broch at Nybster, Caithness.' SAS 187.

107. D 5306 S Glass lantern slide. 'Plan of Broch at Nybster, Caithness.' with archaeological features highlighted. SAS 187.

Manuscripts

108. MS 28/470/1 Letter from Reverend J Joass, Golspie to Dr J Anderson, September 30 1895, containing sketch drawings of the painted pebbles found at Wester and Road Broch. The letter also describes the ongoing excavations at the Freswick broch [he means Nybster] and includes a sketch plan and reconstruction of the door. SAS 470.

109. MS 821/6 Included amongst miscellaneous photocopies of drawings and sketches relating to the archaeological work of Sir Francis Tress Barry are two printed plans of the broch at Nybster, one annotated by Barry '1896. Dr Joass from F Tress Barry, Keiss'. Copied from the original drawings held in collection in Dunrobin Castle Museum.

1897 Everley Broch

ND 36 NE 6 ND 3699 6828

110. C 9109 Photograph of 'Everley Long Mound' from the collection relating to the work of Sir Francis Tress Barry. This is possibly Everley broch. F T Barry no. 106. SAS 187.

111. A 53260 Excavation photograph. 2 copies. "Everley Broch". Entrance, from outside. 1897.' F T Barry no. 107. Also glass lantern slide. SAS 187.

112. C 7562 Excavation photograph. "Everley" Broch. Wall built over it.' F T Barry no. 108. SAS 187.

113. A 53258 Excavation photograph. 2 copies. "Everley Broch". Entrance from inside. 1897.' F T Barry no. 111. SAS 187.

114. A 53259 Photograph. Stone artefacts from "Everley" Broch.' F T Barry no. 135. SAS 187

1897 Sgarbach, Auchingill Fort: Promontory

ND 36 SE 5 ND 3729 6375

Photographs

115. A 53280 Excavation photograph. 2 copies. "Sgarbach" Mound. Passage from inside.' and "Sgarbach Mound" Entrance from inside. 1897.' F T Barry no. 103. Also glass lantern slide. SAS 187.

116. A 53281 Excavation photograph. 2 copies. "Sgarbach Mound". Entrance from outside. 1897.' and 'Sgarbach Mound. Passage from outside.' F T Barry no. 104. SAS 187.



Figure 28: Keiss, broch, 1893. 'Entrance from inside. Stone slab door in situ'. This was one of the first brochs excavated by Barry in the years 1890-93 and is visible from Keiss Castle, seen here looking along the entrance passage. (C9105)

117. C 7567 Excavation photograph. 3 copies. "'Sgarbach". Cut into mound. Heavy flooring.' F T Barry no. 120. SAS 187.

118. C 7568 Excavation photograph. 2 copies. 'Sgarbach. Cut into mound. Passage.' F T Barry no. 121. SAS 187.

119. C 7561 Excavation photograph. General view of mound. 'Sgarbach Mound.' F T Barry no. 101. SAS 187.

1897

Skirza Head Broch

ND 36 NE 2 ND 3940 6844

Photographs

120. C 7564 Excavation photograph. "'Skirsa" Broch. Entrance to chamber in wall.' F T Barry no. 112. SAS 187.

121. A 53268 Excavation photograph. "'Skirsa" Broch. Entrance seen from inside.' F T Barry no. 115. Also glass lantern slide. SAS 187.

122. A 53269 Photograph. Worked stone artefacts discovered during excavation. "'Skirsa" Broch.' F T Barry no. 133. SAS 187.

Old Keiss Castle Castle

ND 36 SE 1 ND 3569 6164

Photograph

123. C 7563 Photograph. 'Keiss Castle. Side view. 1897.' F T Barry no. 109. SAS 187.

Nybster

Cup-markings

ND 36 SE 10 ND 369 638

Photographs

124. C 7569 Photograph. 2 copies. 'Keiss. Cup-marked stone. 1897.' F T Barry no. 125 or 'p'. SAS 187.

1898

Freswick Links Broch

Also known as Sands Broch

ND 36 NE 5 ND 3761 6761

Photographs

125. CA 716 Excavation photograph. 2 copies. "'Sands" Broch. Entrance, and "'Sands" Broch. Entrance and bottom of steps. 1898.' F T Barry no. 139. SAS 187.

126. CA 717 Excavation photograph. 2 copies. "'Sands" Broch. Outbuilding. 1898.' F T Barry no. 140. SAS 187.

127. CA 718 Excavation photograph. 2 copies. "'Sands" Broch. Entrance from outside. 1898.' F T Barry no. 141. SAS 187.

128. A 53282 Excavation photograph. 3 copies. "'Sands" Broch. Steps and chamber in wall. 1898.' F T Barry no. 142. SAS 187.

129. CA 720 Excavation photograph. 2 copies. "'Sands" Broch. Steps in wall. 1898.' F T Barry no. 143. SAS 187.



Figure 29: Castle Linglas, broch. 'The mound at commencement of excavation'. (C7612)

130. CA 721 Excavation photograph. 2 copies. "'Sands" Broch. Chamber in wall. 1898.' F T Barry no. 144. SAS 187.

Drawings

131. DC 33641 'Rough sketch of Freswick Broch, 1895' showing excavations by Sir Francis Tress Barry. Pen and wash on blue waxed linen paper. Scale: 1/8": 1'. Size: 529mm x 560mm. SAS 187. (Photographic copy is number D5201).

Manuscripts

132. MS 28/470/3 Letter from Sir Francis Tress Barry, St Leonard's Hill, Windsor, to Dr J Anderson, January 1900. Enclosed are 5 photographs taken on a trip to Yarhouse in 1890 with Anderson (CA/623-7). Contents also include the report with sketch of the discovery of a small ring and whorl from the 'Sands Broch'. SAS 470.

1898

Ness

Broch

ND 36 NE 1 ND 3814 6665

133. C 7570 Excavation photograph. 2 copies. "'Ness". Chamber at side of the Goe. 1898.' F T Barry no. 128. SAS 187.

134. C 7571 Excavation photograph. 3 copies. 'Ness. From opposite of the Goe.' and "'Ness". Chamber from the opposite side of the Goe. 1898.' F T Barry no. 129. SAS 187.

135. C 9414 Excavation photograph. "'Ness". Steps to well. 1898.' F T Barry no. 130. SAS 187.

136. A 53267 Photograph of worked stone artefacts discovered during excavations by Sir Francis Tress Barry. F T Barry no. 134. SAS 187.

137. C 7575 Excavation photograph. 3 copies. "'Ness". Upper steps leading to well. 1898.' F T Barry no. 145. SAS 187.

138. C 7574 Excavation photograph. "'Ness" Steps to well outside the wall crossing promontory. 1898.' F T Barry no. 146. SAS 187.

139. C 7576 Excavation photograph. 2 copies. "'Ness". Circular habitation with division up the centre. 1898.' F T Barry no. 147. Also glass lantern slide. SAS 187.

140. A 53267 Photograph. Worked stone artefacts discovered during excavations from 'Ness'. F T Barry no. 134. Also glass lantern slide. SAS 187.

Drawings

141. CAD/ 8/1 Plan showing the broch at Ness as excavated by Sir Francis Tress Barry and drawn by John Nicolson. Scale: 1":12'. Size: 283mm x 242mm.

Nybster

Mound

ND 36 SE 11 ND 3665 6323

Although the photographs are captioned 'Freswick' the description of the excavation of the mound by RCAHMS (1911, p.188) matches the features in these photographs and the location is also confirmed by Nicolson's map (Figure 2).

142. C 7572 Excavation photograph. 2 copies. 'Freswick Chambered Cairn. Cremation. 1898.' F T Barry no. 136. SAS 187.

143. C 7573 Excavation photograph. 3 copies. "'Freswick" Chambered Cairn. Cremation. 1898.' and 'Freswick Chambered Cairn. Side View. 1898.' F T Barry no. 137. SAS 187.



Figure 30: Skitten, broch, 1903. 'View of interior'. Barry only excavated the western half of this broch, at the entrance passage. (A53266)

1899

**'Thorny Hillock', Barrock Mill, Caithness
Burnt Mound**

ND 26 SE 5 ND2960 6243

Drawing

144. MS 28/470/7 Sketch of the 'Howe Mound, near Mill of Barroch, 1899' by Sir Francis Tress Barry. Pencil and pen sketch, mounted on card. SAS 470.

Freswick Links

Settlement; Midden

ND 36 NE 4 ND 3760 6762

Photographs

145. C 7577 Excavation photograph. 3 copies. "'Shore" Ruins. Entrance to inner room. 1899.' Original photographs are printed from a broken glass negative. F T Barry no. 150. SAS 187.

146. C 7580 Excavation photograph. 3 copies. "'Shore" Ruins. Side wall to room. 1899.' F T Barry no. 151. SAS 187.

147. CA 1019 Excavation photograph. 3 copies. "'Shore" Ruins. Freswick. 1899.' and "'Shore" Ruins. Entrance to first room. 1899.' F T Barry no 152 or 'G'. SAS 187.

148. C 7579 Excavation photograph. 2 copies. "'Shore" Ruins. General view. 1899.' F T Barry no. 153. SAS 187.

1900

Yarrows

Broch; Settlement

ND 34 SW 1 ND 3083 4349

Photographs

149. CA 626 Photograph contained in letter from Sir Francis Tress Barry to J Anderson, January 1900 (MS/28/470/3) from their visit to Yarrows in 1890. F T Barry no. 10. SAS 470.

Manuscripts

150. MS 28/470/3 Letter from Sir Francis Tress Barry, St Leonard's Hill, Windsor, to Dr J Anderson, January 1900. Enclosed are 5 photographs taken on a trip to Yarhouse in 1890 with Anderson (CA/623-7). Contents also include a report with sketch of the discovery of a small ring and whorl from the 'Sands Broch' (also known as Freswick Broch ND36NE 5). SAS 470.

South Yarrows, South, Caithness

Chambered Cairn

ND 34 SW 5 ND 3045 4318

Photographs

151. CA 624 Photograph contained in letter from Sir Francis Tress Barry to J Anderson, January 1900 (MS/28/470/3) from their visit to Yarrows in 1890. F T Barry no. 6. SAS 470.

152. CA 623 Photograph contained in letter from Sir Francis Tress Barry to J Anderson, January 1900 (MS/28/470/3) from their visit to Yarrows in 1890. F T Barry no. 7. SAS 470.

153. CA 625 Photograph contained in letter from Sir Francis Tress Barry to J Anderson, January (MS/28/470/3) from their visit to Yarrows in 1890. F T Barry no. 8. SAS 470.

154. CA 627 Photograph contained in letter from Sir Francis Tress Barry to J Anderson, January (MS/28/470/3) from their visit to Yarrows in 1890. F T Barry no. 9. SAS 470.

Drawings

155. CAD 53/1 'No. 1 Ground plan' of South Yarrows South chambered cairn contained within letter from Sir Francis Tress Barry, House of Commons, to Dr J Anderson, 29 June 1900 (MS/28/470/4). Pen, ink and pencil on tracing paper. 145mm x 90mm. SAS 470. (Photographic copy is number D5213).

156. CAD 53/2 'No. 3. West end'. Sketch elevation of chamber in South Yarrows South chambered cairn contained within letter from Sir Francis Tress Barry, House of Commons, to Dr J Anderson, 29 June 1900 (MS/28/470/4). Drawing by John Nicolson. Pencil and brown wash mounted on white paper and card mounted. 110mm x 180mm. SAS 470. (Photographic copy is number D5214).

157. CAD 53/3 'No. 2. East end'. Sketch elevation of chamber in South Yarrows South chambered cairn contained within letter from Sir Francis Tress Barry, House of Commons, to Dr J Anderson, 29 June 1900 (28/470/4). Drawing by John Nicolson. Pencil and brown wash on white paper and card mounted. 110mm x 180mm. SAS 470. (Photographic copy is number D5215).

Manuscripts

158. MS 28/470/3 Letter from Sir Francis Tress Barry, St Leonard's Hill, Windsor, to Dr J Anderson, January 1900. Enclosed are 5 photographs taken on a trip to Yarhouse in 1890 with Anderson (CA/623-7). Contents also include a report with sketch of the discovery of a small ring and whorl from the 'Sands Broch' (also known as Freswick Broch). SAS 470.

159. MS 28/470/4 Letter from Sir Francis Tress Barry, House of Commons, to Dr J Anderson, 29 June 1900. Contents include the report of a preliminary investigation of a possible side chamber in South Yarrows South chambered cairn (ND34SW 5) by Murdoch and J Nicolson of Nybster on behalf of Sir Francis Tress Barry, in preparation for the latter's visit with J Anderson later in the year. Enclosed are three sketches made by Nicolson (CAD/53/1-3). Also included is a report of a preliminary investigation of a broch at 'Hill of Works', Barrock (ND26SE 2) by Murdoch on behalf of Sir Francis Tress Barry; and a mound described as 'beyond the entrance to Barroch drive and which is said to have stood in an old loch before it was drained some years ago. I suspect it is an old tower'. The most likely identification of this site is 'Ring of Castle Hill', Lyth (ND26SE 3). SAS 470.

1900

Sandside House

Pictish Symbol Stones

NC 96 NE 10.00 NC 951 651

Drawings

160. CAD 54/1 Sketch drawing of inscribed slab by John Nicolson enclosed in letter from Sir Francis Tress Barry, St Leonard's Hill, Windsor, to Dr J Anderson, 11 December 1900 (MS/28/470/5). SAS 470.

Manuscripts

161. MS 28/470/5 Letter from Sir Francis Tress Barry, St Leonard's Hill, Windsor, to Dr J Anderson, 11 December 1900. Contains a report of the discovery of an inscribed slab and enclosed sketch by J Nicolson (CAD/54/1). The stone is described as being situated in a dyke near the ruins of St Benedictine's chapel at Shurrery, but it is now built into a wall at Sandside House (NC96NE 10.01). SAS 470.

'Ring of Castle Hill', Lyth, Caithness

Fort

ND 26 SE 3 ND 2828 6182

Manuscript

162. MS 28/470/4 Letter from Sir Francis Tress Barry, House of Commons, to Dr J Anderson, 29 June 1900. Contents include the report of a preliminary investigation of a possible side chamber in South Yarrows South chambered cairn (ND34SW 5) by Murdoch and J Nicolson of Nybster on behalf of Sir Francis Tress Barry, in preparation for the latter's visit with J Anderson later in the year. Enclosed are three sketches made by Nicolson (CAD/53/1-3). Also included is a report of a preliminary investigation of a broch at 'Hill of Works', Barrock (ND26SE 2) by Murdoch on behalf of Sir Francis Tress Barry; and a mound described as 'beyond the entrance to Barroch drive and which is said to have stood in an old loch before it was drained some years ago. I suspect it is an old tower'. The most likely identification of this site is 'Ring of Castle Hill', Lyth (ND26SE 3). SAS 470.

1901

Taversoe Tuick, Orkney Chambered Cairn

HY 42 NW 2 HY 4257 2761

Photographs

163. C 9406 Photograph of pottery fragments. Dated 1901. Copied from original photograph in collection in Dunrobin Castle Museum.

1900-1

Hill of Works, Bridge of Lyth, Caithness Broch

ND 26 SE 2 ND 2903 6255

Photographs

164. C 7581 Excavation photograph. 3 copies. "Hill of Works". Barrock. 1900.' F T Barry, no. 154. SAS 187.

165. C 7584 Excavation photograph. "Hill of Works" Barrock.' Photograph in collection in Dunrobin Castle Museum has annotation 'Sir John and Lady Sinclair of Dunbeath at the broch, 1901.' F T Barry no. 159. Also glass lantern slide. SAS 187.

Drawing

166. DC 33642 Plan of the broch at Hill of Works, with pencil additions, 1900, showing excavations by Sir Francis Tress Barry. Pen, pencil and wash on cartridge paper. 504mm x 490mm. SAS 187. (Photographic copy is number D5202). SAS 187.

Manuscripts

167. MS 28/470/4 Letter from Sir Francis Tress Barry, House of Commons, to Dr J Anderson, 29 June 1900. Contents include the report of a preliminary investigation of a possible side chamber in South Yarrows South chambered cairn (ND34SW 5) by Murdoch and J Nicolson of Nybster on behalf of Sir Francis Tress Barry, in preparation for the latter's visit with J Anderson later in the year. Enclosed are three sketches made by Nicolson (CAD/53/1-3). Also included is a report of a preliminary investigation of a broch at 'Hill of Works', Barrock (ND26SE 2) by Murdoch on behalf of Sir Francis Tress Barry; and a mound described as 'beyond the entrance to Barrock drive and which is said to have stood in an old loch before it was drained some years ago. I suspect it is an old tower'. The most likely identification of this site is 'Ring of Castle Hill', Lyth (ND26SE 3). SAS 470.

168. MS 28/187/1 Letter from Sir Francis Tress Barry, Keiss Castle, Wick to Dr J Anderson, 3rd Sept. 1900. The letter describes the discovery of chambers and two skeletons at Barrock. Barry is awaiting a visit from Dr Joass before continuing. SAS 187.

169. MS 28/187/2 Letter from Sir Francis Tress Barry, Keiss Castle to Dr J Anderson, 13th Sept. 1900. The letter describes the continuing work at Barrock and includes a very rough section sketch. Barry is still awaiting a visit from Joass and will excavate the chambers himself if he cannot come. SAS 187.

170. MS 28/187/3 Letter from Sir Francis Tress Barry, Keiss Castle to Dr J Anderson, 21st Sept. 1900. Barry has been called back to Windsor for an election. The excavations at Barrock are not finished and he intends to remove the skeleton to Keiss. Enclosed is a pencil sketch plan of the broch interior drawn by Edward Barry. The chamber has been blocked up. Also enclosed is a sketch of a drinking cup found in the centre area. SAS 187.

171. MS 28/187/4 Letter from Sir Francis Tress Barry, St Leonard's Hill, Windsor to Dr J Anderson, 22 October 1902. Letter describes a visit by Dr Joass to see the excavations at the Hillhead (ND35SE 5) and Barrock brochs (ND26SE 2), before visiting Orkney. Enclosed are photographs of Hillhead. Barry has sent a drawing by Joass of the painted pebbles to Anderson, and has sent finds from Hillhead to the Museum of the Carnegie Free Library at Wick. Photographs numbered in Barry's sequence 73, 79, 96 and 97 are also included. SAS 187.

172. MS 821/6 Included amongst miscellaneous photocopies of drawings and sketches relating to the archaeological work of Sir Francis Tress Barry are two sketch drawings. One annotated 'Barrock Ruins. 21 Sept. 1900' and the other 'Section of wall of Barrock Ruin and Forse 1900'. Copied from original drawings in collection in Dunrobin Castle Museum.

1901-2

'The Pap', Hillhead Broch

ND 35 SE 5 ND 3762 5140

Photographs

173. D 5217 S Glass lantern slide from excavations by Sir Francis Tress Barry. Dated 1901. F T Barry no. K72. SAS 187.

174. D 5204 Excavation photograph. 'Entrance. 1901.' contained in letter from Sir Francis Tress Barry to Dr J Anderson, 22 October 1902 (MS/28/187/4). Barry is standing in the broch entrance. F T Barry no. 73. Also glass lantern slide. SAS 187.

175. D 5203 Excavation photograph dated 1901 contained in letter from Sir Francis Tress Barry to Dr J Anderson, 22 October 1902 (MS/28/187/4). Barry is standing in the broch entrance. F T Barry no. 79. Also glass lantern slide. SAS 187.

176. D 5205 Excavation photograph dated 1901 contained in letter from Sir Francis Tress Barry to Dr J Anderson, 22 October 1902 (MS/28/187/4). F T Barry no. 96. SAS 187.

177. D 5206 Excavation photograph 'Steps in wall to the left. 1901.' contained in letter from Sir Francis Tress Barry to Dr J Anderson, 22 October 1902 (MS/28/187/4). F T Barry no. 97. SAS 187.

178. C 9108 Excavation photograph. 'Broken stair wall. 1901.' Copied from original photograph in collection in Dunrobin Castle Museum. F T Barry no. 155.

179. C 7582 Excavation photograph. 2 copies. "Hillhead" Broch. Chamber inside entrance. 1901.' F T Barry no. 156. SAS 187.

180. C 7583 Excavation photograph. 2 copies. "Hillhead" Broch. Steps to well. 1901.' F T Barry no. 157. SAS 187.

181. A 53283 Excavation photograph. 2 copies. "Hillhead" Broch. Entrance. 1901.' F T Barry no. 158. Also glass lantern slide annotated 'Entrance from outside.' SAS 187.

182. C 7585 Excavation photograph. 3 copies. "Hillhead" Broch. Entrance from inside. 1901.' F T Barry no. 160. SAS 187.

183. C 7586 Excavation photograph. 3 copies. "Hillhead" Broch. Debris in centre of broch. 1901.' F T Barry no. 161. SAS 187.

184. C 7587 Excavation photograph. 3 copies. "Hillhead" Broch. Entrance to steps in wall. 1901.' F T Barry no. 162. SAS 187.

185. C 7588 Excavation photograph. "Hillhead" Broch. Entrance to steps in wall.' F T Barry no. 163. SAS 187.

186. C 7591 Excavation photograph. "Hillhead" Broch. Entrance passage from inside.' F T Barry no. 164. SAS 187.

187. C 7589 Excavation photograph. 2 copies. "Hillhead" Broch. Entrance passage from outside.' and "Hillhead" Broch. Entrance. 1901.' F T Barry no. 165. SAS 187.

Manuscripts

188. MS 28/187/4 Letter from Sir Francis Tress Barry, St Leonard's Hill, Windsor to Dr J Anderson, 22 October 1902. Letter describes a visit by Dr Joass to see the excavations at the Hillhead (ND35SE 5) and Barrock brochs (ND26SE 2), before visiting Orkney. Enclosed are photographs of Hillhead. Barry has sent a drawing by Joass of the painted pebbles to Anderson, and has sent finds from Hillhead to the Museum of the Carnegie Free Library at Wick. Photographs numbered in Barry's sequence 73, 79, 96 and 97 are also included. SAS 187.

189. MS 28/187/6 Typescript, probably of lecture to the Society of Antiquaries of London, June 12 1902 describing the excavations of the broch at Hillhead, Caithness, by Sir Francis Tress Barry. Typescript in foolscap format, 10 pages. SAS 187

1902

"Cairn of Elsay", Staxigoe, Caithness Broch (Also known as Elsay Broch)

ND 35 SE 6 ND 3871 5198

Photographs

190. C 7613 Excavation photograph. 'Elsay'. F T Barry print 'b'. SAS 187.

191. CA 631 Excavation photograph. 'Ambry in secondary construction inside' enclosed in a letter from Sir Francis Tress Barry to Dr Joseph Anderson, August 1902 (MS/28/470/6). F T Barry no. 125. SAS 470.

192. CA 630 Excavation photograph. 'Entrance passage from inside' enclosed in a letter from Sir Francis Tress Barry to Dr Joseph Anderson, August 1902 (MS/28/470/6). F T Barry no. 126. SAS 470.

193. C 7590 Excavation photograph. 2 copies. "Elsay" Broch. The entrance. 1902.' F T Barry no. 169. SAS 187.

194. C 7593 Excavation photograph. "Elsay" Broch. Entrance.' F T Barry no. 170. SAS 187.

- 195. C 7594** Excavation photograph. "Elsay" Mound. Land side. 1902.' FT Barry no. 174. SAS 187.
- 196. C 9107** Excavation photograph. Seaward side. Copied from original photograph in collection in Dunrobin Castle Museum. F T Barry no. 175.
- 197. C 7595** Excavation photograph. 3 copies. "Elsay" Broch. Entrance. 1902.' FT Barry no. 177. SAS 187.
- 198. A 53261** Excavation photograph. 3 copies. "Elsay" Broch. Entrance. 1902.' FT Barry no. 178. SAS 187.
- 199. C 7596** Excavation photograph. 3 copies. "Elsay" Broch. Chamber inside on top of debris. 1902.' FT Barry no. 179. SAS 187.
- 200. C 7597** Excavation photograph. 3 copies. "Elsay" Broch. Inside wall. Entrance to steps.; "Elsay" Broch. Interior of.' and "Elsay" Broch. Entrance to.' FT Barry no. 180. SAS 187.

201. A 53262 Excavation photograph. 2 copies. "Elsay" Broch. Entrance passage from inside.' and "Elsay" Broch. Inside entrance. 1903.' FT Barry no. 187. SAS 187. (A further copy is contained in SAS 291).

202. C 7598 Excavation photograph. 2 copies. "Elsay" Broch. Chamber in wall inside.' and "Elsay" Broch. Chamber in wall. 1903.' FT Barry no. 188. SAS 187. (A further copy is contained in SAS 291).

203. C 7599 Excavation photograph. "Elsay" Broch. Steps in wall. 1903.' FT Barry no. 189. SAS 187. (A further copy is contained in SAS 291).

Manuscripts

204. MS 28/187/5 Letter from Sir Francis Tress Barry, St Leonard's Hill, Windsor to Dr J Anderson, 28 October 1902. Barry encloses some photographs showing excavations at Elsay broch (ND35SE 6), Ackergill Links (ND35SW 12) and Ackergill mound (ND35SW 13). Two photographs are enclosed numbered in Barry's sequence 129 and 131, as well as small sketch of arrowhead. Original envelope. SAS 187.

205. MS 28/291 Letter from Sir Francis Tress Barry, St Leonard's Hill, Windsor to Dr J Anderson, 8 December 1904. Barry is interested in Anderson's report on work at Dunadd and encloses some photographs showing excavations at the brochs at Elsay (ND35SE 6) and Skitten (ND35NW 3). SAS 291.

1902

Ackergill Links

Long Cist Cemetery; Pictish Symbol Stones

ND 35 SW 12 ND 3487 5497

Photographs

206. B 75578 Photograph of skull possibly from Ackergill Links (ND35SW 12). Dated 1902. Copied from original photograph in collection in Dunrobin Castle Museum.

207. C 9412 Photograph of excavation of cist. 'ACK Links - Cist No.5.' Copied from original in collection in Dunrobin Castle Museum.

208. B 75577 Photograph of skull labelled 'ACK Links Cist No.4.' Dated 1902. Copied from original photograph in collection in Dunrobin Castle Museum.

209. C 9500 Photograph of ogam-inscribed symbol stone. F T Barry no.91. SAS 187.

210. C 7554 Photograph of ogam-inscribed symbol stone. F T Barry no. 92. SAS 187.

211. C 9413 Photograph of ogam-inscribed symbol stone. F T Barry no.93. SAS 187

212. CA 628 Excavation photograph dated 1902 enclosed in a letter from Sir Francis Tress Barry to Dr Joseph Anderson, August 1902 (MS/28/470/6). FT Barry no. 103. SAS 470.

213. CA 629 Excavation photograph dated 1902 enclosed in a letter from Sir Francis Tress Barry to Dr Joseph Anderson, August 1902 (MS/28/470/6). FT Barry no. 105. SAS 470.

214. D 5207 Excavation photograph. 'Cist No. 3' contained in letter from Sir Francis Tress Barry to Dr J Anderson, 28 October 1902 (MS/28/187/5). FT Barry no. 129. SAS 187.

Manuscripts

215. MS 28/187/5 Letter from Sir Francis Tress Barry, St Leonard's Hill, Windsor to Dr J Anderson, 28 October 1902. Barry encloses some photographs showing excavations at Elsay broch (ND35SE 6), Ackergill Links (ND35SW 12) and Ackergill mound (ND35SW 13). Two photographs are enclosed numbered in Barry's sequence 129 and 131, as well as small sketch of arrowhead. Original envelope. SAS 187.

216. MS 28/470/6 Letter from Sir F T Barry, Keiss Castle, Wick, 7 August 1902 to Dr J Anderson in which Barry describes his discoveries at Ackergill Mound and Ackergill Links. SAS 470.

Ackergill Mound

Cairn

ND 35 SW 13 ND 3487 5437

Photographs

217. D 5208 Excavation photograph. 'Circle of stones. 1902.' contained in letter from Sir Francis Tress Barry to Dr J Anderson, 28 October 1902 (MS/28/187/5). FT Barry no. 131. SAS 187.

218. C 7592 Photograph of skull fragments. "Ackergill" Mound. 1902.' FT Barry no. 167. SAS 187.

Manuscripts

219. MS 28/187/5 Letter from Sir Francis Tress Barry, St Leonard's Hill, Windsor to Dr J Anderson, 28 October 1902. Barry encloses some photographs showing excavations at Elsay broch (ND35SE 6), Ackergill Links (ND35SW 12) and Ackergill mound (ND35SW 13). Two photographs are enclosed numbered in F T Barry's sequence 129 and 131 and dated 1900, as well as small sketch of arrowhead. Original envelope. SAS 187.

220. MS 28/470/6 Letter from Sir F T Barry, Keiss Castle, Wick, 7 August 1902 to Dr J Anderson in which Barry describes his discoveries at Ackergill Mound and Ackergill Links. SAS 470.

1903

Latheron

Pictish Symbol Stone: Ogam-inscribed

ND 13 SE 27 ND 1981 3315

Photographs

221. B 75579 Photograph of 'Barry' Stone, from J. Nicolson's squeeze. Copied from original photograph in collection in Dunrobin Castle Museum. Dated 1903.

222. C 9402 Photograph of ogam-incised symbol stone. Copied from original photograph in collection in Dunrobin Castle Museum.

223. C 9403 Photograph of ogam-incised symbol stone. Copied from original photograph in collection in Dunrobin Castle Museum.

224. C 9404 Photograph of ogam-incised symbol stone. Copied from original photograph in collection in Dunrobin Castle Museum.

225. C 9405 Photograph of ogam-incised symbol stone. Copied from original photograph in collection in Dunrobin Castle Museum.

226. C 9110 Photograph of symbol stone. Copied from original photograph in collection in Dunrobin Castle Museum. FT Barry, no. 182.

227. C 9111 Photograph of symbol stone. Copied from original photograph in collection in Dunrobin Castle Museum. FT Barry, no. 183.

228. C 9114 Photograph of symbol stone. Copied from original photograph in collection in Dunrobin Castle Museum. FT Barry, no. 184.

229. C 9117 Photograph of symbol stone. Copied from original photograph in collection in Dunrobin Castle Museum. FT Barry, no. 185.

230. C 9112 Photograph of symbol stone. Copied from original photograph in collection in Dunrobin Castle Museum. FT Barry, no. 186.

231. C 9113 Photograph of symbol stone. Copied from original photograph in collection in Dunrobin Castle Museum. FT Barry, no. 194.

Manuscripts

232. MS/821/4 Typescript draft of article 'Notice of a Sculptured Stone with Ogham Inscription, from Latheron now in possession of Sir Francis T Barry, Bart., M.P., Hon. FSA Scot, at Keiss Castle, Caithness and of Two Sculptured Stones recently discovered by Rev. D Macrae at Edderton, Ross-shire' by Joseph Anderson and published in PSAS 38 (1903-4), 534-540.

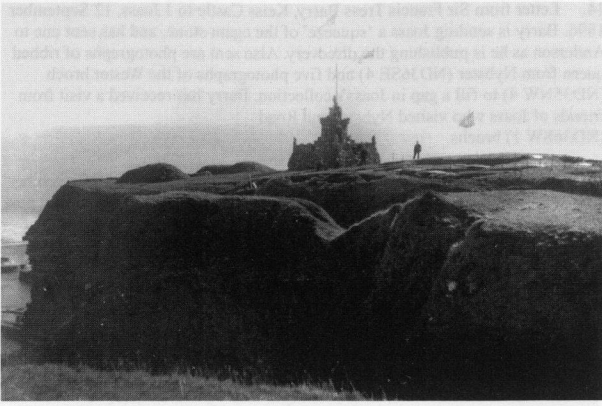


Figure 31: Nybster, broch. Flags are flying at the broch site and at Mervyn Tower. Although the print is undated, Barry's numbering sequence would suggest that it dates to c. 1896 and possibly commemorates the completion of Mervyn Tower (C7559).

Skitten, Caithness Broch

ND 35 NW 3 ND 3234 5655

Photographs

233. **C 9401** Excavation photograph. "Kilminster" Broch. Entrance. 1904.' SAS 187.

234. **C 7614** Excavation photograph. 'Kilminster Mound, 1904.' F T Barry print. 'h'. SAS 187.

235. **C 9116** Excavation photograph. "Kilminster" Mound. 1904.' F T Barry no. 198. SAS 291.

236. **C 7603** Excavation photograph. "Kilminster" Broch. 1904.' F T Barry no. 200. SAS 187. (A further copy is contained in SAS 291).

237. **C 7604** Excavation photograph. "Kilminster" Broch. Entrance passage. 1904.' F T Barry no. 203. SAS 187. (A further copy is contained in SAS 291).

238. **A 53266** Excavation photograph. "Kilminster" Broch. 1903.' F T Barry no. 204. SAS 187. (A further copy is contained in SAS 291).

239. **C 7605** Excavation photograph. "Kilminster" Broch. 1904.' F T Barry no. 205. A further copy is contained in SAS 291. SAS 187.

Manuscripts

240. **MS 28/291** Letter from Sir Francis Tress Barry, St Leonard's Hill, Windsor to Dr J Anderson, 8 December 1904. Barry is interested in Anderson's report on work at Dunadd and encloses some photographs (Barry numbers 187, 188, 189, 198, 200, 203, 204 and 205) showing excavations at the brochs at Elsay (ND35SE 6) and Skitten (ND35NW 3). SAS 291.

1904

Shean, Stemster, Caithness Chambered Cairn

ND 16 SE 1 ND 1742 6260

Drawings

241. **B 13599** Sketch of bowl and cover stone as uncovered during the course of excavations by Sir Francis Tress Barry. Drawings by John Nicolson, 1904. Original drawings held in the Northlands Viking Centre, Auckengill.

242. **CAD/50/1** Plan of chamber at Shian, Stemster from excavations by Sir Francis Tress Barry, 1904. Contained within letter MS/28/470/9. Black, red ink and pencil on blue waxed linen paper. Scale: 3/4":1'. 390mm x 275mm. SAS 470. (Photographic copy is number D5210). SAS 470.

243. **CAD/50/2** Plan of burial in south west corner of chamber at Shian, Stemster from excavations by Sir Francis Tress Barry, 1904. Contained within letter MS/28/470/9. Black ink on blue waxed linen paper. 198mm x 252mm. SAS 470. (Photographic copy is number D5211).

244. **CAD/50/3** Elevation drawing of South side of chamber showing doorway at Shian, Stemster, chambered cairn, from excavations by Sir Francis Tress Barry, 1904. Contained within letter MS/28/470/9. Black ink on blue waxed linen paper. 169mm x 159mm. SAS 470. (Photographic copy is number D5212).

Manuscripts

245. **MS 28/470/8** Letter from Sir Francis Tress Barry to Dr J Anderson, St Leonard's Hill, Windsor, 16 October 1904 describing the position of pottery and bones in the chambered cairn at Shean, Stemster. SAS 470.

246. **MS 28/470/9** Letter from Sir Francis Tress Barry to Dr J Anderson, St Leonard's Hill, Windsor, no date. Enclosed is a copy of a letter from John Nicolson to Sir F T Barry, 4 November 1904, describing his excavation, with Murdoch, of the chambered cairn at Shean, Stemster. Also enclosed are 3 sketches of the excavation (CAD/50/1-3) and a description of the structure with measurements and contents of the cairn. SAS 470.

247. **MS 28/470/10** Report on the human remains from the chambered cairn at Shian, Stemster, by Thomas H Bryce. SAS 470.

Birkle Hills, Keiss, Caithness Shell Midden; Pictish Symbol Stone ND 35 NW 5 ND 3392 5847

Drawing

248. **DC 33655** Photo-litho print (by Whiteman & Bass, London) titled 'Inscribed stone from Birkle Hill, Keiss, Caithness'. 336mm x 212mm. SAS 187. (Photographic copy is number C9409).

Green Hill, Reiss Norwall Broch Broch

ND 35 SW 10 ND 3266 5445

Photographs

249. **C 7600** Excavation photograph. "Norwall" Broch. Entrance passage.' F T Barry no. 191. SAS 187.

250. **C 7601** Excavation photograph. "Norwall" Broch. Entrance passage.' F T Barry no. 193. SAS 187.

251. **C 7602** Excavation photograph. "Norwall" Broch. Chamber in passage.' F T Barry no. 197. SAS 187.

Other material

Callanish, Lewis Stone Circle; Stone Alignments NB 23 SW 1 NB 2130 3300

Photographs

252. **B 75580** Photograph of stone circle. Copied from original photograph in collection in Dunrobin Castle Museum.

Skirsa Cliffs

ND 36 NE ND 39 68

253. **C 7565** Photograph. 'Skirsa Cliffs.' F T Barry no. 114. SAS 187.

254. **C 7566** Photograph. 'Skirsa Head. 1897.' F T Barry no. 117. SAS 187.

Miscellaneous

Photographs

255. **D 5216** Photograph showing a selection of bone, antler and stone objects from the excavations of Sir Francis Tress Barry. From MS/28/187/8. SAS 187.

256. **C9408** Photographic copy of watercolour sketch of a stone 'from Keiss, Caithness. Scale c.1/2', dated January 1897. The stone seems to be incised with a leaf pattern and some symbols. Referred to in letters 5 and 21 in MS 821/7 below. Copied from original drawing in collection in Dunrobin Castle Museum.

Drawings

257. **DC 33644** 1st Edition Ordnance Survey six-inch Map, 1877, Caithness Sheet VIII with adhesive spots marking location of sites. Annotation for a bronze spearhead find spot by F T Barry. Annotated on reverse 'Freswick No. 8, 6-'. SAS 420.

258. **DC 33645** 1st Edition Ordnance Survey six-inch Map, 1877, Caithness Sheet XIII with adhesive spots marking location of sites. Annotated on reverse 'Barroch No. 13, 6-'. SAS 420.

259. **DC 33646** 1st Edition Ordnance Survey six-inch Map, 1877, Caithness Sheet VI with adhesive spots marking location of sites. Annotated on reverse 'Sheet 6, 6-, Dunnet Bay, Castletown'. SAS 420.
260. **DC 33647** 1st Edition Ordnance Survey six-inch Map, 1877, Caithness Sheet XXIII with adhesive spots marking location of sites. Annotated on reverse 'No. 23. 6-. Toftingal, Scouthal, Acharole, Ballacharn'. SAS 420.
261. **DC 33643** Watercolour map by John Nicolson, scale 1":1mile, 1906, titled 'Map of the Northeast of Caithness Shewing the Archaeological Researches of Sir F Tress Barry, Bart. F.S.A.'. Size: 763mm x 562mm. Map also illustrates the archaeological work of others including J Rhind, Dr Anderson, Dr Davidson, Samuel Laing, Mr Traill and Mr Brown. SAS 410. (Photographic copies are numbered B75949/CN and D5209).

Manuscripts

262. **MS 28/187/7** List of photographs of Caithness brochs excavated by Sir Francis Tress Barry. SAS 187.
263. **MS 821/1** Four page typescript 'Suggested Points to be Considered in Estimating the Age of the Caithness Brochs.' Typescript follows Dr J Anderson's classification scheme. Copied from original typescript in the collection in Dunrobin Castle Museum.
264. **MS 821/5** Hand-written list of 'Sir Francis Tress Barry's Photographs (Received Jan 14th 1909).' Copied from the original list in the collection in Dunrobin Castle Museum.
265. **MS 821/6** Miscellaneous photocopies of drawings and sketches relating to the archaeological work of Sir Francis Tress Barry, including a drawing of an unidentified brooch. Copied from original drawings in the collection in Dunrobin Castle Museum.
266. **MS/821/7** Copies of original correspondence held in the collections at Dunrobin Castle Museum.
1. Letter from Sir Francis Tress Barry, Keiss Castle, to Dr Joass, 2 September 1895. Barry is preparing for a visit by Joass, and suggests that the Duke [of Sutherland] may wish to see his archaeological work. Work at a mound at Freswick [Barry actually means Nybster] is revealing a broch.
 2. Letter from Sir Francis Tress Barry, Keiss Castle, to Dr Joass, 9 September 1895. Barry is sending 'by parcel post' 2 photographs.
 3. Letter from Sir Francis Tress Barry, Keiss Castle, to Dr Joass, 23 September 1895. Barry has received a letter from Joass and has organised a carriage to meet him at the station.
 4. Letter from J W Cursiter, Kirkwall to Dr Joass, 29 September 1895. Cursiter has been visiting Joass and staying at Keiss Castle and is writing to thank Joass for his hospitality, and inviting him to visit Orkney.
 5. Letter from H F Morland Simpson, 80 Hamilton Place, Aberdeen to Dr Joass, 5 October 1895. The letter discusses possible inscriptions on a stone (256 above) and disc (Road Broch ND36SW 1) from Keiss.
 6. Letter from J Anderson to Dr Joass, 9 October 1895. Anderson thanks Joass for the account of the new broch at Nybster (ND36SE 4) and the description of the painted pebbles.
 7. Letter from Sir Francis Tress Barry, St Leonard's Hill, Windsor to J Joass, 11 December 1895. Barry mentions that he has sent 3 new photographs of the Nybster broch (ND36SE 4) and has been successful in purchasing a polished celt.
 8. Letter from J Nicolson, Nybster to J Joass, 11 December 1895. The letter discusses the possible bridges over the Wester river.
 9. Letter from Lord Southesk, Kinnaid Castle, Brechin, to J Joass, 19 November 1895. Southesk has received photographs of the disc from Keiss (Road broch, ND36SW 1) and is examining the inscription with interest.
 10. Letter from Lord Southesk, Carberry Tower, to J Joass, 16 December 1895. Southesk thanks Joass for his letter about the Keiss disc (Road broch, ND36SW 1), and is preparing to travel to England for the winter.
 11. Letter from J Nicolson, Nybster, by Wick to J Joass, 27 December 1895. The letter is continuing on from number 8 above, and focuses on the Loch of Wester.
 12. Letter from Sir Francis Tress Barry, Keiss Castle to J Joass, 13 August 1896. Barry is expecting Anderson to stay and is inviting Joass to join them. He mentions that Nybster broch (ND36SE 4) is 'opening out well'.
 13. Letter from Sir Francis Tress Barry, Keiss Castle to J Joass, 5 September 1896. Barry is sorry that the Duke [of Sutherland] has not been able to visit, as work at Nybster (ND36SE 4) is continuing. Another stone with spots from Keiss broch has just been noticed amongst 'slingstones' on Barry's table.

14. Letter from Sir Francis Tress Barry, Keiss Castle to J Joass, 12 September 1896. Barry is sending Joass a 'squeeze' of the ogam stone, and has sent one to Anderson as he is publishing the discovery. Also sent are photographs of ribbed quern from Nybster (ND36SE 4) and five photographs of the Wester broch (ND35NW 4) to fill a gap in Joass's collection. Barry has received a visit from friends of Joass who visited Nybster and Road (ND36SW 1) brochs.
15. Letter from Sir Francis Tress Barry, Keiss Castle to J Joass, 19 September 1896. Barry will photograph inscribed stone again, and is sending by parcel post two or three stones, one of which may be spotted.
16. Letter from Sir Francis Tress Barry, Keiss Castle to J Joass, 26 September 1896. Barry is preparing to leave Keiss for St Leonard's, Windsor and asks that Joass forwards the stones to that address. Barry has closed the brochs down for winter. Photographs of the ogam stone are in the post.
17. Letter from Sir Francis Tress Barry, Keiss Castle to J Joass, 29 September 1896. A stone covered in scratches has been found on the Wester Broch (ND35NW 4) and Barry believes it to be the work of a visitor but has sent a tracing to Joass for an opinion.
18. Letter from Sir Francis Tress Barry, St Leonard's Hill, Windsor to J Joass, 14 October 1896. Barry is contacting Keiss to ask that the stone from Wester Broch (ND35NW 4) be sent to Joass as there is the suggestion that the marks may be genuine. Barry's son, William, is going to Kinnaid Castle and will take with him enlarged photographs of the Keiss disc (Road Broch ND 36SW 1) for analysis by Lord Southesk.
19. Letter from Sir Francis Tress Barry, St Leonard's Hill, Windsor to J Joass, 20 October 1896. Barry writes that because his factor, Mr Nicolson, is in Edinburgh that the stone will not be posted on for a while.
20. Letter from Sir Francis Tress Barry, St Leonard's Hill, Windsor to J Joass, 29 October 1896. Two photographs have been sent by parcel post, including number 100 which shows Murdoch standing on a wall which has been restored by Nicolson.
21. Letter from J Joass, Golspie to F T Barry, 2 November 1896. Joass thanks Barry for three photographs of Nybster broch (ND36SE 4) and suggests that next year a photograph of the pivot stone in situ would be useful. The stone with a flower has arrived and Joass discusses whether the markings are runes and the flower indicating St Margaret's Day as on an early calendar. He plans to consult others but suggests that there might be another part of the stone still to be found.
22. Letter from Sir Francis Tress Barry, 1 South Audley Street, to J Joass, 22 April 1898. Barry has enclosed photographs of the painting of the painted stones and is distributing them in the hope to gain some information about them. He has compared them to those found in France in the Caves de Mas d'Azil. Dr Woodward in the British Museum has found a bears canine from amongst teeth found in the buildings around the Road Broch (ND36SW 1).
23. Post Office telegram from Barry, Keiss to J Joass, 12 March 1895 inviting Joass to visit next week, as Barry leaves after that for Windsor.

