



North Fort Street
Leith
Edinburgh

0 100km

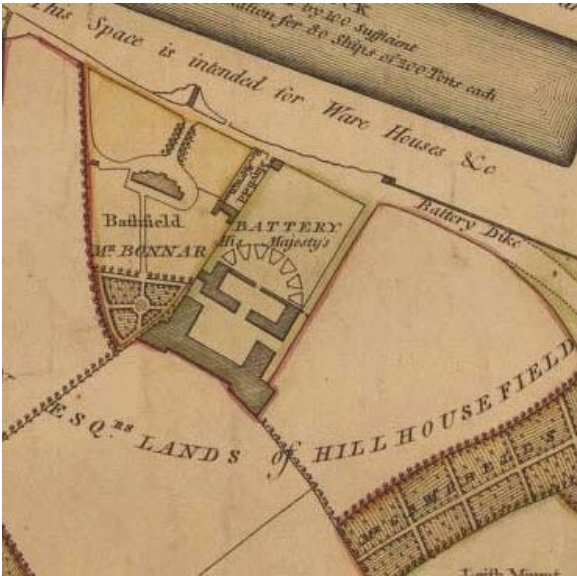


Reproduced using 2010 OS 1:50,000 Landranger Series No. 66 and digital data. Ordnance Survey © Crown copyright 2011 All rights reserved. Licence No. AL 100013329. OS 1st edition reproduced by permission of the Trustees of the National Library of Scotland.

Scale 1:1,250 @ A4



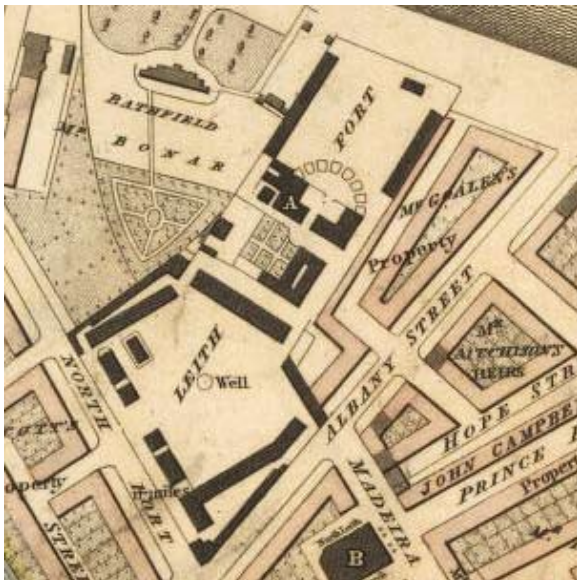
0 50m



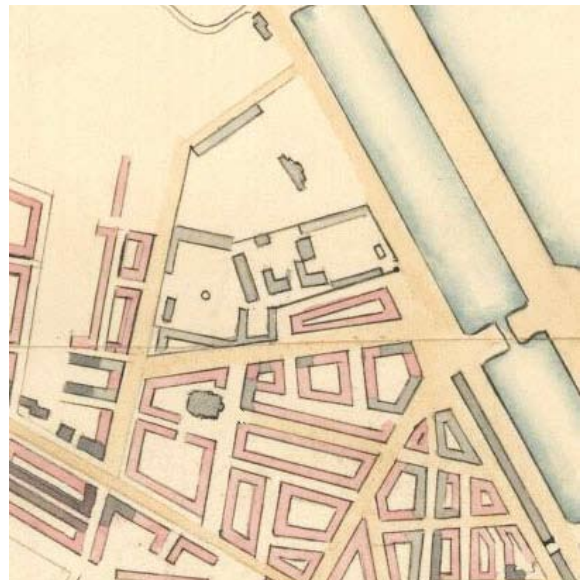
Illus 2
Ainslie 1804



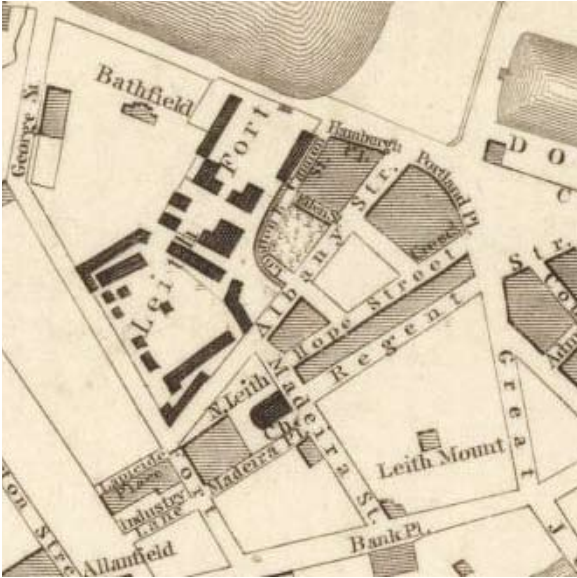
Illus 3
Scott 1805



Illus 4
Kirkwood 1817



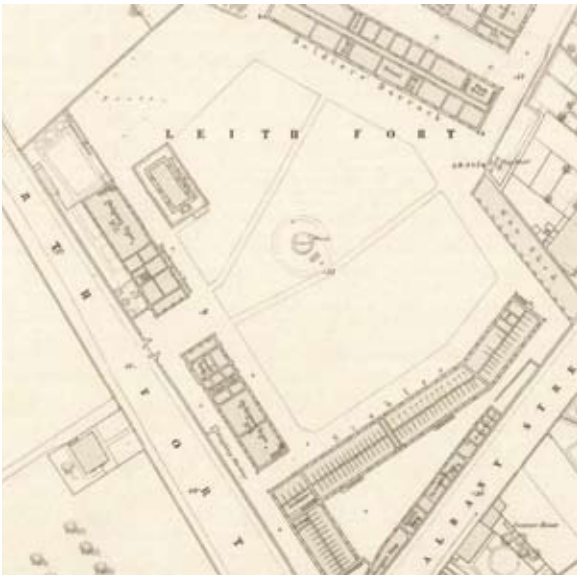
Illus 5
Crawford 1824



Illus 6
Stevenson & Son 1837



Illus 7
Ordnance Survey 1853



Illus 8
Ordnance Survey 1853 detail



Illus 9
Ordnance Survey 1878



Illus 10
Ordnance Survey 1895



Illus 11

Boundary Wall at corner of Portland Street



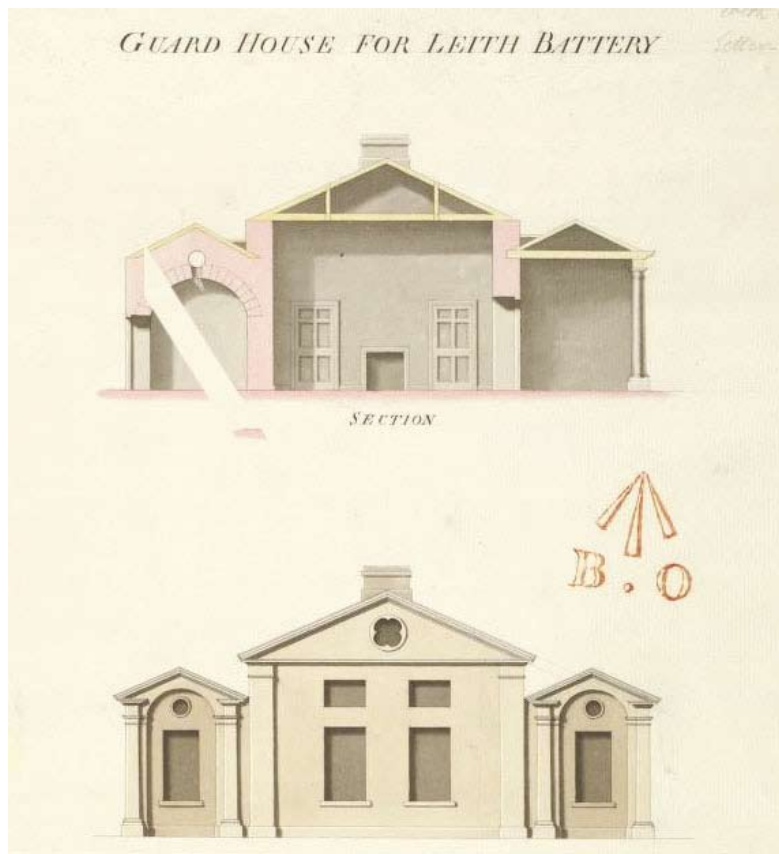
Illus 12

Gate piers and pedestrian arches



Illus 13

Old Photo of Leith Fort
© RCAHMS, licensor SCRAN



Illus 14

Guard House Section and Elevation (Watt pre-1804)



Illus 15
Eastern guardhouse looking SE

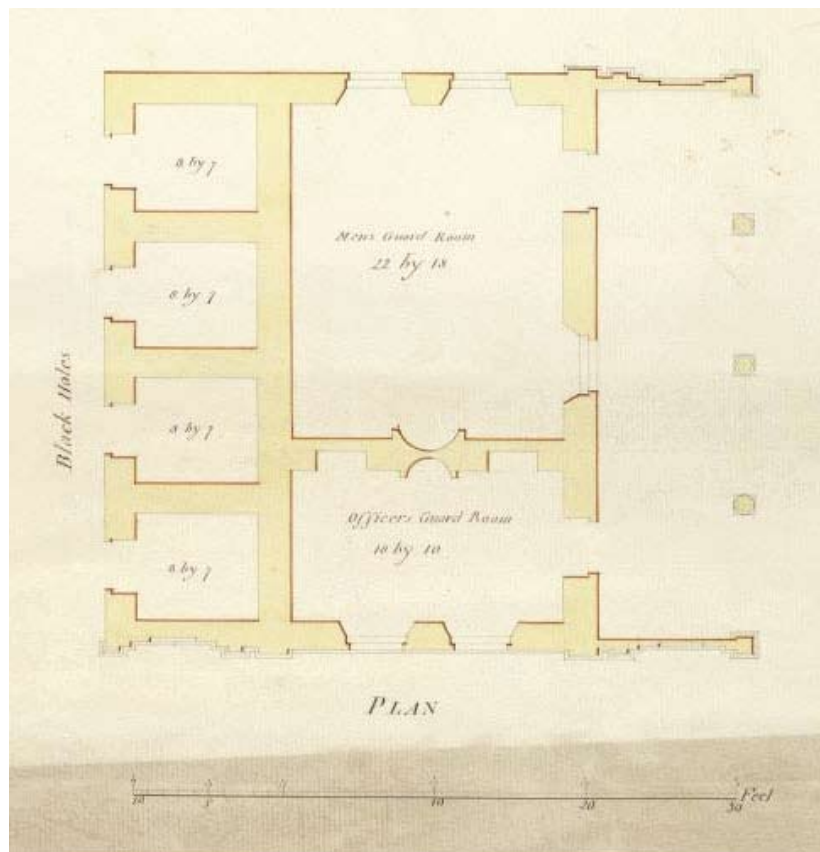


Illus 16
Eastern guardhouse, E elevation showing blocked doorways



Illus 17

Eastern guardhouse, E elevation showing blocked doorway to N, detail



Illus 18

Guard House Plan (Watt pre-1804)



Illus 19

Eastern guardhouse, Room 1, blocked windows in north wall



Illus 20

Eastern guardhouse, Transformer 2 in Room 2



Illus 21
Western guardhouse, N elevation



Illus 22
Western guardhouse, circular windows in west wall