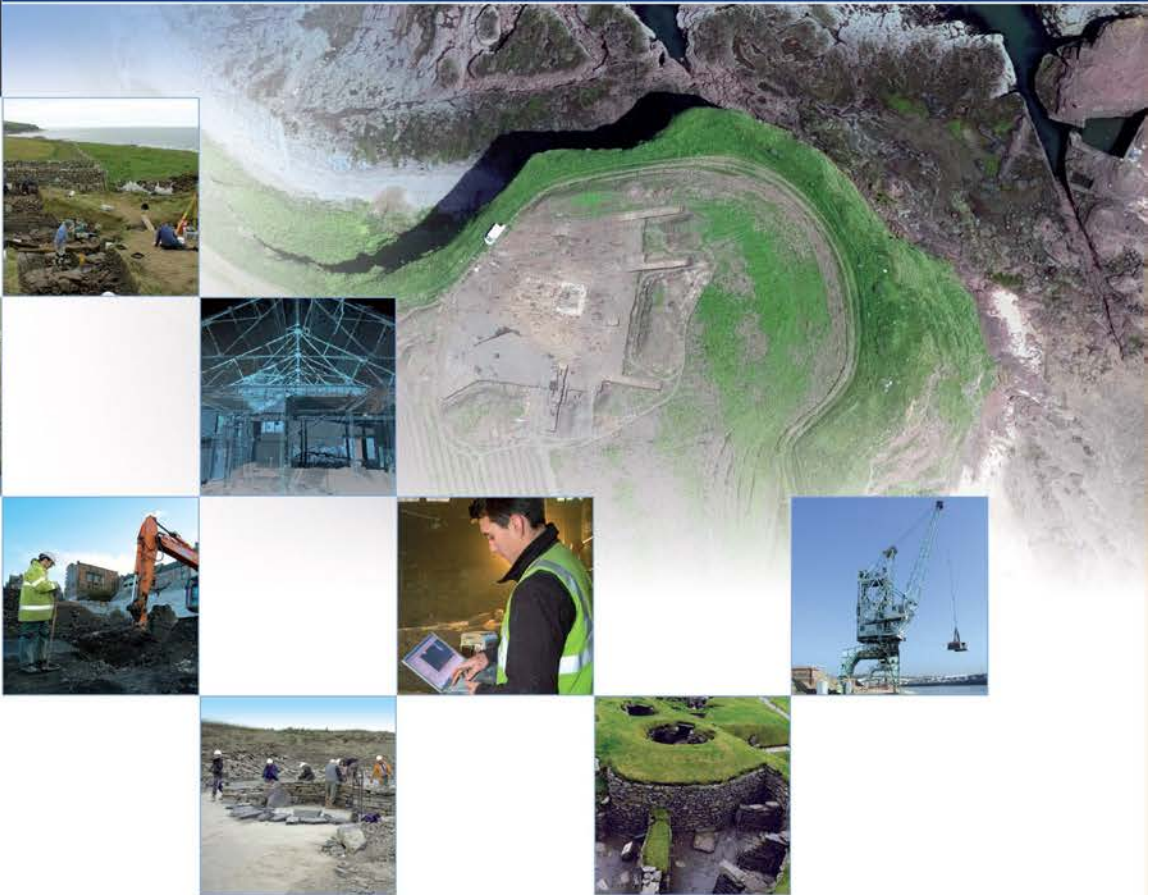


South Church, Moray Street, Elgin: Historic Building Recording Report

AOC 22857
19th November, 2014



ARCHAEOLOGY

HERITAGE

CONSERVATION

South Church, Moray Street, Elgin: Historic Building Recording Report

On Behalf of:	Grant & Geoghegan Unit 4 Westerton Road Business Centre 4 Westerton Road South Keith AB55 5FH For: J Maunder
National Grid Reference (NGR):	NJ 21510 62538
AOC Project No:	22857
Planning Application No:	14/01399/LBC
OASIS No:	194999
Prepared by:	Diana Sproat
Date:	19th November 2014

This document has been prepared in accordance with AOC standard operating procedures.

Author: Diana Sproat

Date: 19th November 2014

Approved by: Martin Cook

Date: 19th November 2014

Draft/Final Report Stage: Draft

Date: 19th November 2014

Enquiries to: AOC Archaeology Group
Edgefield Industrial Estate
Edgefield Road
Loanhead
EH20 9SY

Tel. 0131 440 3593
Fax. 0131 440 3422
e-mail. admin@aocarchaeology.com

Contents

	Page
List of Figures.....	2
List of Plates	2
List of Appendices.....	3
<i>Summary</i>	3
1 INTRODUCTION	3
1.1 Project Background	3
1.2 Site Location	3
2 OBJECTIVE	3
3 METHODOLOGY	3
4 HISTORICAL BACKGROUND	4
5 RESULTS.....	7
6 DISCUSSION.....	9
7 CONCLUSIONS	9
8 REFERENCES	9
8.1 Bibliographical references	9
8.2 Cartographic references	9
APPENDIX 1: PHOTOGRAPHIC REGISTER	10
APPENDIX 2: DISCOVERY AND EXCAVATION IN SCOTLAND (DES) REPORT	13

List of Figures

- Figure 1: Site Location plan
- Figure 2: Extract from Roy's map, ca. 1747 – 55
- Figure 3: Extract from Wood's map, 1822
- Figure 4: Extract from Ray's map, 1838
- Figure 5: Extract from Ordnance Survey map, 1868
- Figure 6: Extract from Ordnance Survey map, 1906
- Figure 7: South Church, north-west elevation
- Figure 8: South Church, north-east elevation
- Figure 9: South Church, south-west elevation
- Figure 10: South Church, south-east elevation
- Figure 11: South Church, ground floor plan
- Figure 12: South Church, first floor plan

List of Plates

- Plate 1: General view from the north-west
- Plate 2: General view from the north
- Plate 3: General view from the west
- Plate 4: General view from the south
- Plate 5: North-east elevation, general view from the east
- Plate 6: South-east elevation, general view from the south-east
- Plate 7: South-east elevation, detail of decorative stonework above main door
- Plate 8: South-east elevation, detail of capitals to the main doorcase on the south-west side, from the north
- Plate 9: South-east elevation, detail of capitals to the main doorcase on the north-east side, from the east
- Plate 10: South-east elevation, detail of the carved figure/stop to the hood mould on the main doorcase on the north-east side, from the north-west
- Plate 11: South-east Elevation, detail of the carved figure/stop to the hood mould on the main doorcase on the south-west side, from the north-west
- Plate 12: Detail clock tower and spire from the east
- Plate 13: Detail of clock tower and spire from the south-west
- Plate 14: South-west elevation, detail of small porch window in the north-west side, from the south-west
- Plate 15: North-east elevation, general view from the north
- Plate 16: South-west elevation, general view from the south
- Plate 17: North-east elevation, detail of corner buttress from the north
- Plate 18: North-east elevation, detail of hood mould over north-westernmost window from the north-east
- Plate 19: North-east elevation, detail of hood mould over second north-westernmost window from the north-east
- Plate 20: North-east elevation, detail of hood mould over second south-easternmost window from the north-east
- Plate 21: North-east elevation, detail of hood mould over central window from the north-east
- Plate 22: North-east elevation, detail of hood mould over south-easternmost window from the north-east
- Plate 23: South-west elevation, detail of hood mould over north-westernmost window from the south-west
- Plate 24: South-west elevation, detail of hood mould over second north-westernmost window from the south-west
- Plate 25: South-west elevation, detail of hood mould over central window from the south-west
- Plate 26: South-west elevation, detail of hood mould over second south-easternmost window from the south-west
- Plate 27: South-west elevation, detail of hood mould over south-easternmost window from the south-west
- Plate 28: South-west elevation, detail of north-westernmost window from the south-west
- Plate 29: South-west elevation, detail of vent below window from the south-west
- Plate 30: South-east elevation, general view from the east
- Plate 31: North-east elevation, general view of the south-east end showing doorway through to the small corridor 0/2, from the north-east
- Plate 32: South-west elevation, detail of bricked-up doorway on the south-east end from the south-west
- Plate 33: South-east elevation, detail of the windows to the south-west side from the south-east
- Plate 34: South-east elevation, detail of vent on the original building from the south-west
- Plate 35: South-east elevation, detail of circular first floor window to the upper gallery from the SSE
- Plate 36: Detail of vent on the apex of the roof of the main body of the church for the east
- Plate 37: North-east elevation, general view of the later 19th century extension and doorway to the basement from the north-east
- Plate 38: Room -1/1, general view showing boarded-up window from the north-west
- Plate 39: Room -1/1, general view from the south-east
- Plate 40: Room 0/1, general view from the south-east
- Plate 41: Room 0/1, general view from the north-west
- Plate 42: Room 0/1, general view from the north
- Plate 43: Room 0/1, general view of the south-west wall from the north
- Plate 44: Room 0/1, general view from the east
- Plate 45: Room 0/1, detail of the excavation trial pit in the western corner showing the stone foundation walls from the NNE
- Plate 46: Room 0/1, detail of the shapes of the pews leftover after their removal on the timber panelling of the north-east wall, from the south-west

- Plate 47: Room 0/1, detail of the column capital and frieze and balcony to the upper gallery from the north-east
- Plate 48: Room 0/2, detail of the present main entrance to the side (north-east) wall, from the SWW
- Plate 49: Room 0/3, general view from the SEE
- Plate 50: Room 0/3, general view from the NNW
- Plate 51: Room 0/3, general view from the north
- Plate 52: Room 0/3, general view from the SWW
- Plate 53: Room 0/4, detail of windows in the south-east wall, from the NWW
- Plate 54: Room 0/4, detail of small window in the south-east wall from the north
- Plate 55: Room 0/5, general view from the south
- Plate 56: Room 0/5, general view from the south-west
- Plate 57: Room 0/5, detail of main entrance doorway from the south
- Plate 58: Room 0/5, detail of main entrance porch from the south-east
- Plate 59: Room 0/5, detail of floor to main porch from the south-east
- Plate 60: Room 0/5, detail of window in north-east wall of porch from the south-west
- Plate 61: Room 0/5, detail of decorative roof of porch
- Plate 62: Room 0/5, detail of decorative moulding of porch in the north corner from the south
- Plate 63: Room 0/5, detail of railing to the stairwell window in the south-west wall from the north
- Plate 64: Room 1/1, general view from the north
- Plate 65: Room 1/1, general view from the west
- Plate 66: Room 1/1, general view from the south
- Plate 67: Room 1/1, general view of the rear seating gallery from the south
- Plate 68: Room 1/1, general view of roof from the north
- Plate 69: Room 1/1, detail of corbel and base of rafter on the south-west wall from the north
- Plate 70: Room 1/1, detail of circular vent in the roof
- Plate 71: Room 1/1, detail of louvered window of the main window in the north-east wall from the west
- Plate 72: Room 1/1, detail of mechanism for operation of the ventilation system in front of window in the north-east wall from the west
- Plate 73: Room 1/1, detail of stained glass window in the north-east side of the south-east wall from the north
- Plate 74: Room 1/1 detail of stained glass window in the south-west side of the south-east wall from the west

List of Appendices

- Appendix 1: Photographic Record
- Appendix 2: Discovery and Excavation in Scotland (DES) Entry

Summary

AOC Archaeology Group was commissioned by Grant and Geoghegan on behalf of their client to undertake an historic building survey prior to the development of the former South Church on Moray Street in Elgin. The works were required as part of the planning condition on the development which will see the conversion of the Church into a climbing wall centre.

The church was built as the South Free Church between 1852 – 1854 by A & W Reid as a five-by-one bay Gothic style church with a main nave, vestry to the south-east and porch to the north-west, with large clock tower and spire. In the later 19th century, a small extension was added to the south-east side. Made redundant in about 2000, the church has had all of its pews removed as well as some areas of flooring and panelling, although the timber columns and decorative work to the balcony of the upper gallery still remain.

1 INTRODUCTION

1.1 Project Background

- 1.1.1 AOC Archaeology Group was commissioned by Grant & Geoghegan, on behalf of their client, to undertake an historic building survey at the former South Church, Moray, Elgin. The works were required as part of the planning consent and listed building consent on the development (Refs: 14/01398/APP and 14/01399/LBC) by the Moray Council who are advised on archaeology planning matters by the Aberdeenshire Council Archaeology Service. The works were undertaken in keeping with the policies outlined in *Scottish Planning Policy* (2010) and *PAN 2/2011 Planning and Archaeology* (2011) and all nationally recognised guidance for such work, including standards laid down by the Institute for Archaeologists (IfA).
- 1.1.2 The church is a B-Listed building and lies just outside of the Elgin South Conservation Area to the east and Elgin High Street Conservation Area to the north.

1.2 Site Location

- 1.2.1 South Church is located at the top of South Guildry Street and to the south side of Moray Street, Elgin, and is located at NGR: NJ 21510 62538 (Figure 1).

2 OBJECTIVE

- 2.1 The main objective of the historic building recording survey was to record the existing building as a 'preservation by record' through photography, written and drawn record prior to its modification and conversion. A more detailed objective was to create a general history and development of the site.

3 METHODOLOGY

- 3.1 All Ordnance Survey and pre-Ordnance Survey maps were viewed to create a general history and development of the site. Archive research was also undertaken to place the findings in context, the results of which can be found in Section 4. All references can be found in Section 8.
- 3.2 A general and detailed exterior and interior photographic survey was taken in black and white print and colour digital using a 35mm SLR and digital SLR respectively to a minimum 10 mpxl resolution. A discreetly placed 2m or 1m scale was placed in all shots where access and health and safety allowed for scale. General shots of each elevation were taken (both head-on and oblique) as well as the building in its setting. Detailed shots of individual features such as doors, windows, architectural detail, etc, were also undertaken. Internally, a general photographic record was taken of the church on a room-by-room basis. Internal detail shots were also taken of some features of architectural or historic interest, such as the decorative columns and stained glass windows. A running register of photographs was taken on site and can found in Appendix 1. A selection of digital photographs have been used as plates to illustrate the report.
- 3.3 A written survey was undertaken of the church using AOC *pro forma* recording sheets with comment on condition, construction, architectural features, modern interventions, and any evidence for phasing and function. Each floor was given a unique reference number (-1 = basement, 0 = ground floor, 1 = first floor). Each room within that floor was then given a unique identifier which can be cross-referenced with the photographs, plates and the floor plans.
- 3.4 A drawn record was also required of the site and these consist of annotated architects' elevations and floor plans which have been reproduced here as Figures 7 - 12.

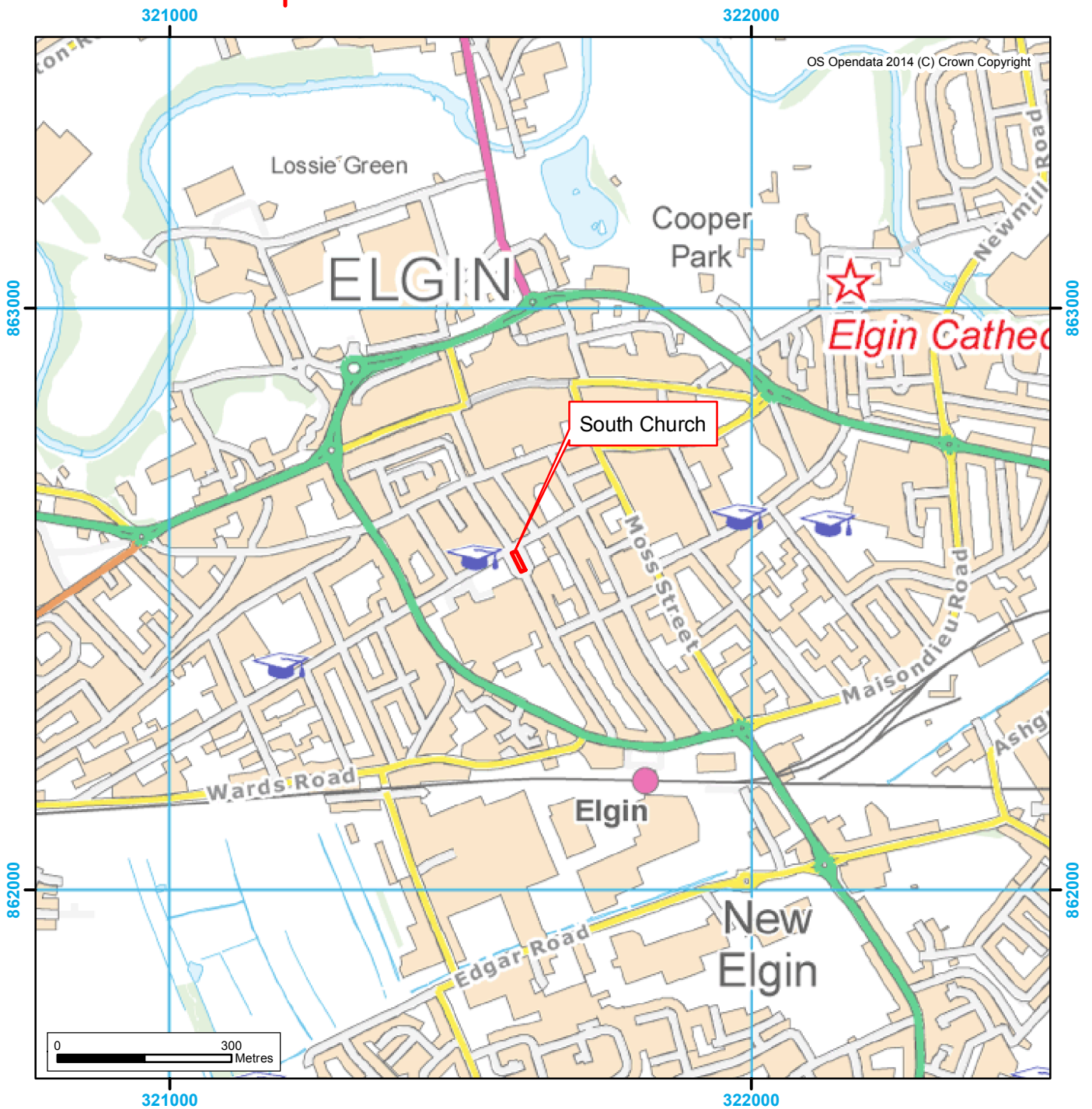
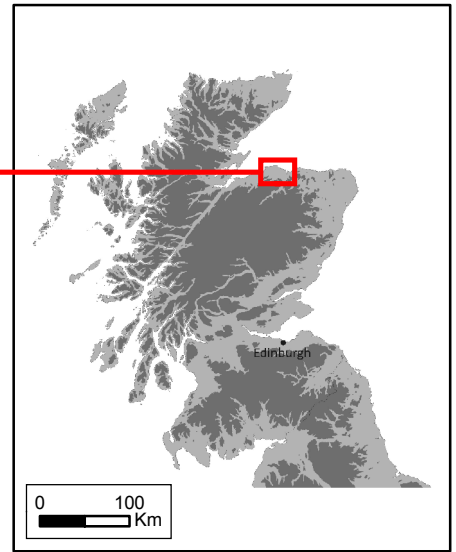
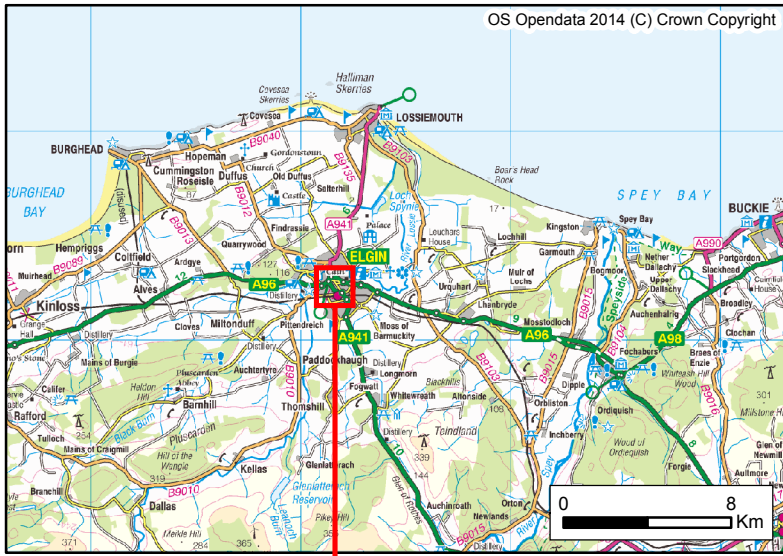


Figure 1: Site location plan

4 HISTORICAL BACKGROUND

4.1 Prior to the South Church being constructed, the area in which it was to be built was previously an area of open farming land reaching back from the 'Back Street' (which is now called South Street). Indeed, Roy's map of ca. 1747 – 55 depicts the area as cultivated land (Figure 2) and the earliest detailed town plan of Elgin – John Wood's map of 1822 – describes the area simply as 'Crofts with Runrigg' with a diagonal lane running from the rear of some properties at Back Street (Figure 3). However, Ray's later 1838 map goes into a little more detail and marks out the ownership of the lands (Figure 4). The diagonal road looks now to be little used, and Moray Street is marked out as a dashed line, indicating it is now being used as a thoroughfare linking Academy Street to Hay Street. The position of the future church, and indeed Guildry Street, is located in the plot annotated as 'The Guildry'.



Figure 2: Extract from Roy's map, ca. 1747 – 55



Figure 3: Extract from Wood's map, 1822

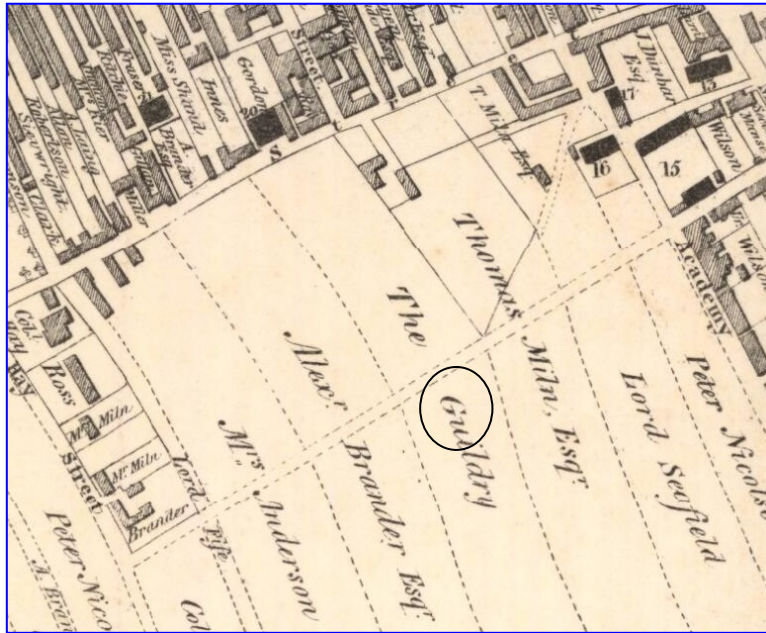


Figure 4: Extract from Ray's map, 1838 (the future position of the church is circled)

- 4.2 The South Church – or the South United Free Church – was built between 1852 - 1854 and first appears on the Ordnance Survey town plan of 1868 (Figure 2). Moray Street has been firmly established, as has South Guildry Street, with a number of buildings now linking South Street with the southern parts of the town. The church was constructed to a design by A & W Reid in the Gothic style with a three-stage tower at the north-west end. Alexander and William Reid were nephews and pupils of William Robertson whose Elgin-based architectural practice they inherited in 1841 which they subsequently moved to Inverness. They returned to Elgin in the mid-1880s to Commerce Street. They had commissions from the 1840s to the 1890s, which included a wide range of commissions, including many parish churches.

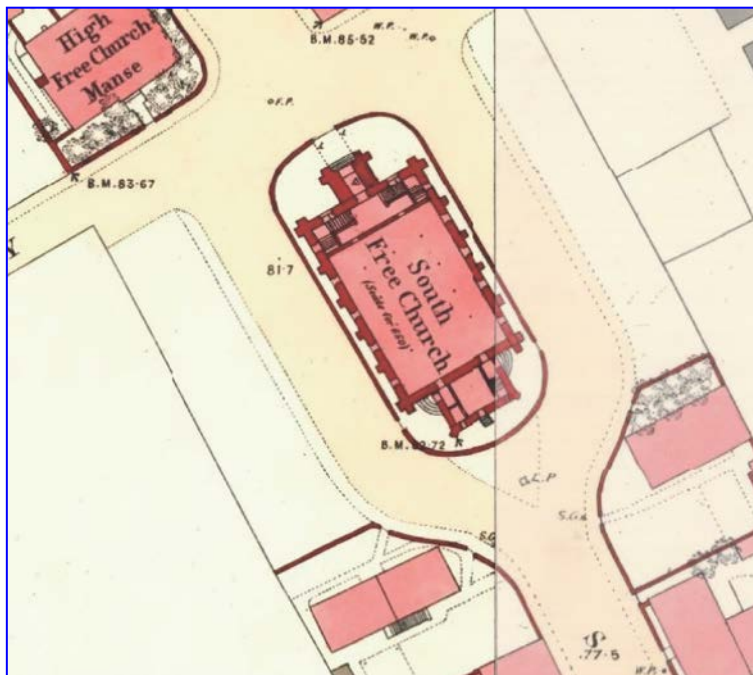


Figure 5: Extract from the Ordnance Survey map, 1868

- 4.3 By the later 19th century, a small extension was added to the south-east gable and this can be seen in the Ordnance Survey map of 1906 (Figure 3). Even more expansion of the area has also taken place by this time, with housing estates springing up to the north-west and south-west of South Guildry Street, with the South Church retaining its dominant position within the local community.

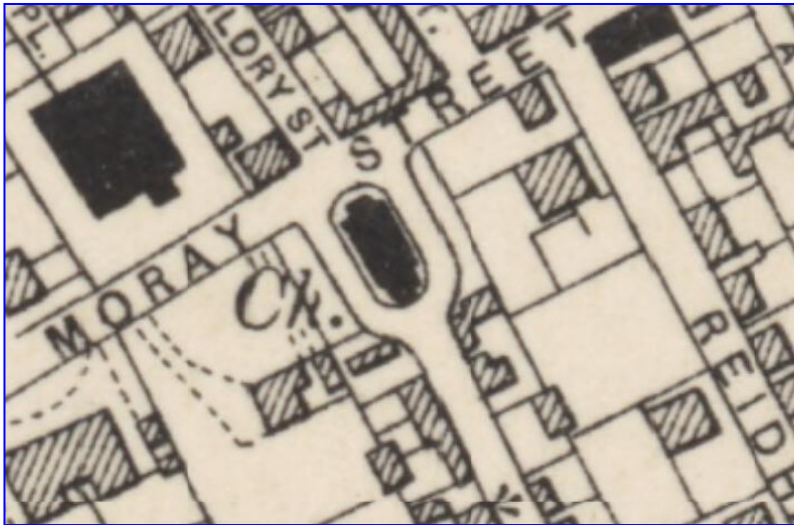


Figure 6: Extract from the Ordnance Survey map, 1906

5 RESULTS

- 5.1 South Church is located at the terminus of South Guildry Street with its main entrance to Moray Street (Plates 1 - 6). Orientated north-west/south-east, the main body of the church is five bays by one bay and is constructed of coursed light beige ashlar with a pitched slate roof. It is dominated by its Gothic-style pointed arches to the east and west elevations with thin stepped and angled buttresses between each.
- 5.2 To the north-west is the main tower and main entrance to the church (Figure 7). The doorway is framed by a typically Gothic pointed arch flanked by two orders of columns with plain moulded heads and footings with a projecting triangular arch over (Plates 7 – 9). The stops to the outer pointed arched hood mould also feature carved heads of a woman (east) and man (west) (Plates 10 & 11). The outer body of the church is then dominated by a large lancet window to each side with an upper small thin lancet window above the main entrance. The third stage of the clock tower then has features to all four sides, including a pair of belfry openings below the clock with cusped lancet windows with triangular hood moulds to the base of the spire (Plates 12 & 13). To the east and west elevations of the main entrance is another smaller lancet window lighting the main porch (Plate 14).
- 5.3 The north-east and south-west elevations are relatively identical with a row of five double lancet windows flanked by corner buttresses topped with Gothic-style pinnacles (Figures 8 & 9; Plates 15 - 17). As with the main entrance the stops to the hood moulds over the lancet windows feature small head carvings (Plates 18 – 27). The windows themselves are plain stained glass with an open louvered window to the upper half (Plate 28) and there are small cast-iron vents to the footing below each (Plate 29).
- 5.4 The rear of the church – as identified above in Section 4 – has had an extension (Figure 10; Plate 30). The longer rectangular original part of the church can still be seen behind, however, with the small lancet windows partially obscured by it. The north-east and south-west elevations of the original also each have a low-set doorway - the south-west of which has been blocked – which is chamfered and flat arched with a flush surround (Plates 31 & 32). The corners are then defined by a corner buttress and the pitched roof to each side rises to another cross finial to mimic the clock tower (Plate 33). Small circular iron vents are located below in the footing (Plate 34). The south-east elevation of the original then has a double lancet and thin single lancet window to each side; these probably flanked a large doorway prior to the extension. This small extension then consists of a three lancet window to the rear south-east elevation to a gable, also with cross finial. The extension has partially blocked the dominance and effect of the large upper gallery windows to the main body of the church, which features a central rose window (Plate 35).
- 5.5 The slate roof is certainly not original, although does have stone flashing to the ridge (lead elsewhere). It also features a number of steel vents to the apex (Plate 36).
- 5.6 Internally, the church, although stripped of its pews and some internal furnishings, shows much of its original layout and design, consisting of a main nave (Room 0/1) with outer galleries with an overhead gallery. There is a large room to the south-east (Room 0/3), and a toilet and entranceway (Rooms 0/2 and 0/4), which would have formed an original entrance (Figure 11). A small door in the external north-east side of the later extension leads to a small basement area, Room -1/1 (Plate 37). This area is a small store room with a small boarded-over window to the south-east elevation and houses the boiler to the north-west side (Plates 38 & 39).
- 5.7 Starting first with the main nave of the church, Room 0/1, this consists of a five by one bay space with timber floorboards and rendered walls, flanked by timber octagonal columns supporting an upper gallery (Plates 40 – 44). Although the floorboards do exist, there are a number of places where they have been lifted up and these have exposed the thin stone foundations of the church (Plate 45). The pews, as said, have now been removed, although the marks where they were located can still be seen on the timber panelling to the lower

part of the walls (Plate 46). The surviving timberwork supporting and forming the upper gallery is also quite fine and a nice survival within the church (Plate 47). The panel above the columns has a plaster frieze of entwined vines and buds, above which is a larger panel of shaped balustrades with a rectangular infill below a further upper frieze featuring a quatrefoil design inside its own distinct decorative panel. The whole is painted a nice shade of grey and yellow, although it is unknown whether this is a copy of an original scheme. The main entrance into the nave is to the south-east wall, although any original mouldings around the doorway have been removed (see Plate 41). This leads straight into the larger former vestry/meeting room (0/3) behind. It is flanked by a doorway to each side the one to the south-west a small recessed cupboard, the one to the north-east leading to the small entrance to the side to the north-east through a discreet corridor (Plate 48).

- 5.8 The rear former entrance and extension is now one open room (0/3) to the south-east side (Plates 49 – 52). It is a large L-shaped room with timber floorboards and rendered walls with low timber panelling. The door to the nave is through a plain opening in the north-west wall and the blocked original doorway to the south-west wall is covered over and cannot be seen on the internal side. The exterior windows on the south-east wall consist of the double and single to the original build and the triple lancet window adjacent belonging to the extension. To the north-east, a small doorway leads through to the small toilet, Room 0/4, a later addition with a dividing partition separating the original windows on this side (Plates 53 & 54). The 1868 plan shows us the original layout of this area prior to the extension (see Figure 5). The two external doorways were open and had curved steps to the approach. The south-west side was then subdivided into a small room, as was the north-east side, although a stair is also depicted here, indicating another possible entrance to the upper galleries on this side. A door is also shown leading to the exterior on the south-east wall and – curiously – there is no central doorway depicted leading to the nave, creating a private space, which indicates that this may have been a later addition when the small extension was added. Hence access to the nave was a lot more controlled, with the south-west entrance leading to the downstairs pews and the north-east doorway leading to the upper gallery.
- 5.9 The main entrance of the church at the north-west end, Room 0/5, also provides access to the upper galleries and consists of a long corridor with a stairwell to the north-east and south-west ends with a small porch below the clock tower. There are two smaller doors to the south-east wall leading to the nave. The corridor has rendered walls with timber panelling (although some has been removed) and rendered ceiling with a moulded cornice (Plates 55 & 56). The main doorway to the porch mimics the main entrance in a chamfered opening (Plate 57). The porch itself has the main doorway with (modern replacement) vertical timber panelled pointed arched doorway and terra cotta floor tiles (Plates 58 & 59). The two small lancet side porch windows are to the north-east and south-west (Plate 60). It also has a decorative ceiling in the style of a ribbed vault with plain decorative boss and stop to the corners of the ribs (Plates 61 & 62).
- 5.10 The upper gallery is accessed to the north-west via the main stairs with timber panelling all the way up and railings in front of the stained glass window in this bay (Figure 12; Plate 63). The gallery curves round the nave to the north-west side (with a small door to the clock tower) with timber panelling below the rendered walls throughout (Plates 64 – 67). The ceiling is false with a later roof installed, in keeping with the Gothic style of the building, complete with circular covers for the vents (Plates 68 – 70). There are railings in front of the plain stained glass windows which all have small top-opening louvered windows to the upper part (Plate 71). Against the north-east wall, the second bay from the south-east has two large levers, presumably for operating the ventilation system (Plate 72). The two larger windows in the south-east wall are more decorative than the rest with depictions of angels (Plates 73 & 74).

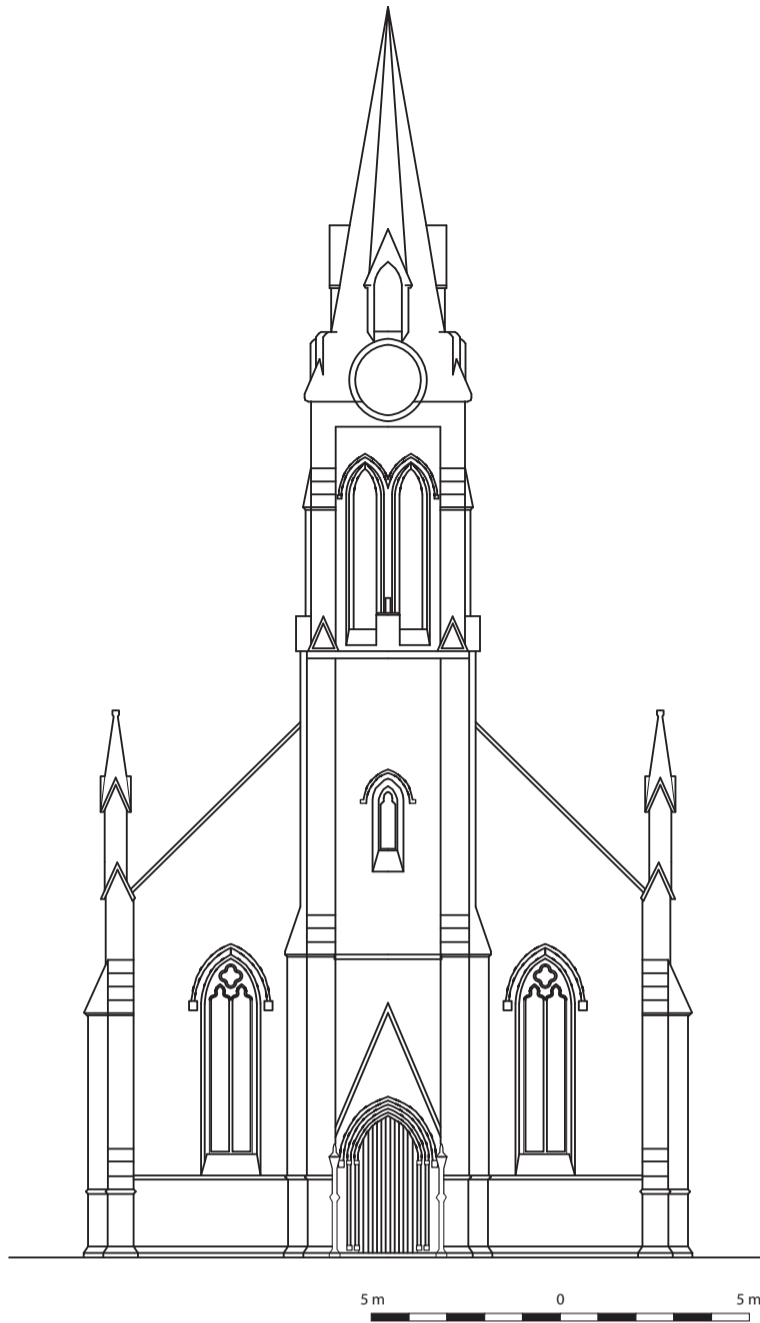


Figure 7: South Church, north-west elevation (provided by Grant & Geoghegan Ltd)



Figure 8: South Church, north-east elevation (provided by Grant & Geoghegan Ltd)



Figure 9: South Church, south-west elevation (provided by Grant & Geoghegan Ltd)

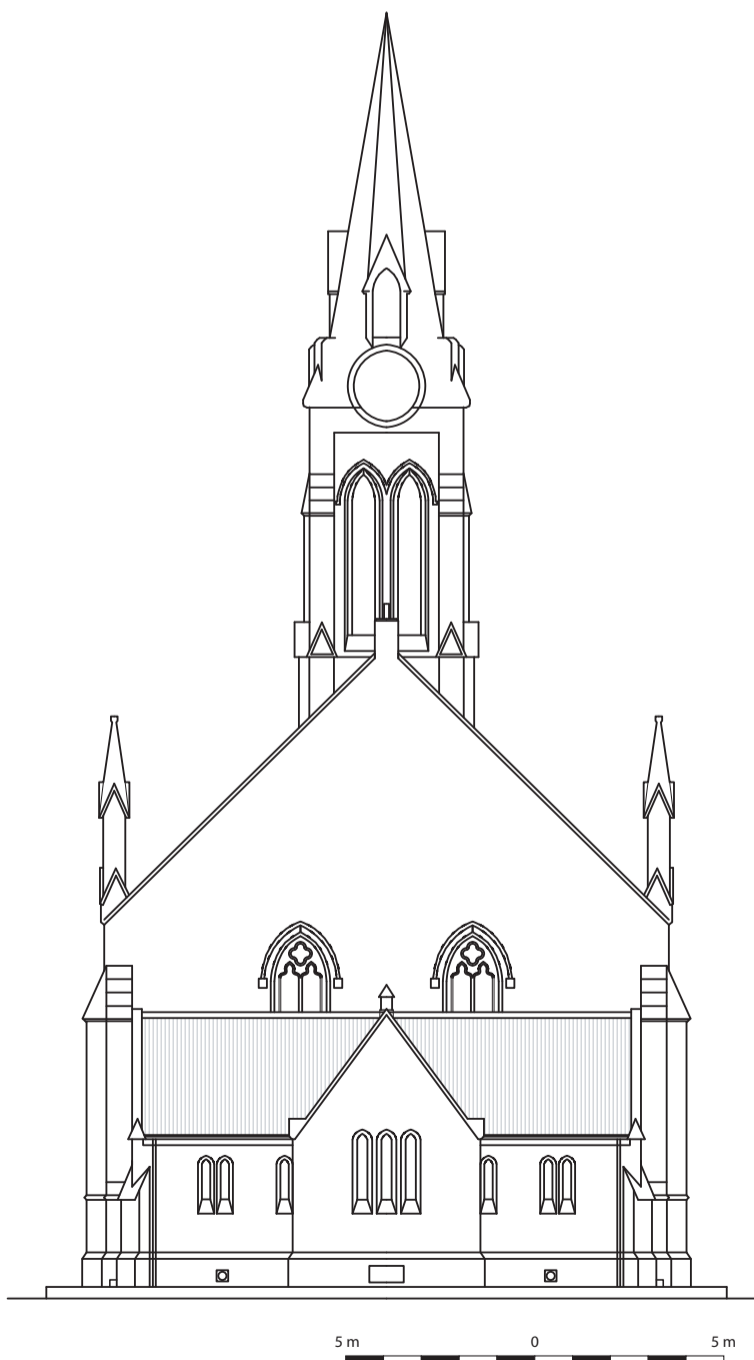


Figure 10: South Church, south-east elevation (provided by Grant & Geoghegan Ltd)

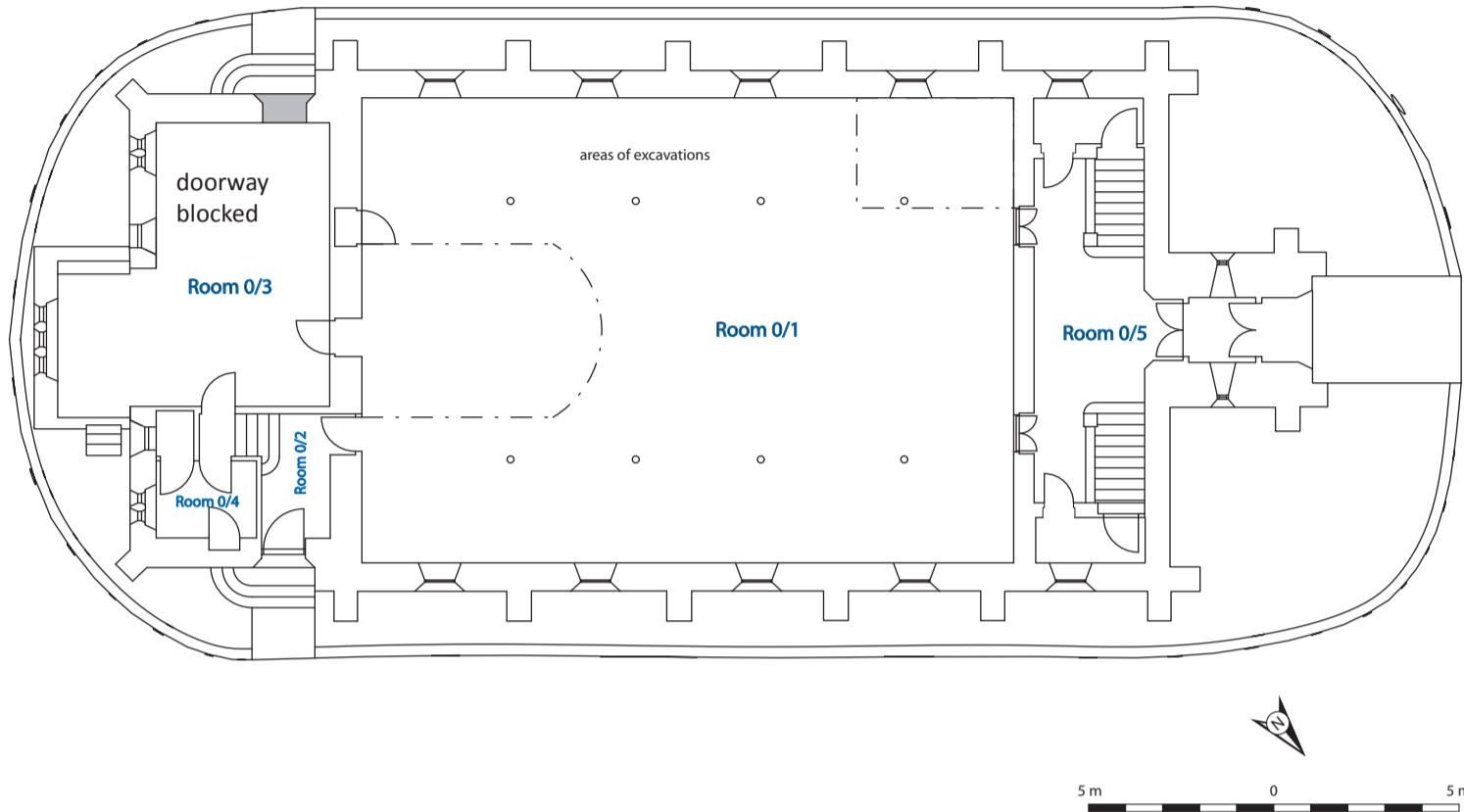


Figure 11: South Church, ground floor plan (provided by Grant & Geogheagan Ltd)

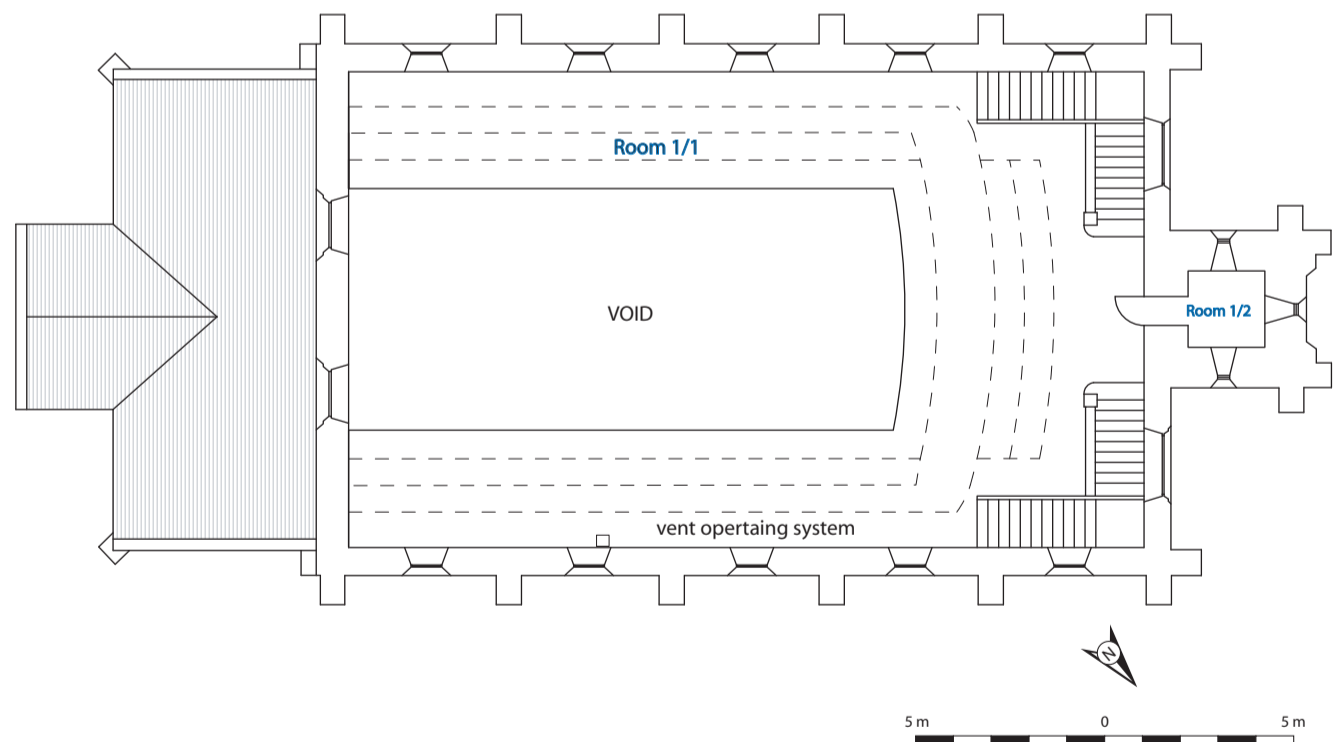


Figure 12: South Church, first floor plan (provided by Grant & Geogheagan Ltd)



Plate 1: General view from the north-west



Plate 2: General view from the north



Plate 3: General view from the west



Plate 4: General view from the south



Plate 5: North-east elevation, general view from the east



Plate 6: South-east elevation, general view from the south-east



Plate 7: South-east elevation, detail of decorative stonework above main door



Plate 8: South-east elevation, detail of capitals to the main doorcase on the south-west side, from the north



Plate 9: South-east elevation, detail of capitals to the main doorcase on the north-east side, from the east



Plate 10: South-east elevation, detail of the carved figure/stop to the hood mould on the main doorcase on the north-east side, from the north-west



Plate 11: South-east elevation, detail of the carved figure/stop to the hood mould on the main doorcase on the south-west side, from the north-west



Plate 12: Detail clock tower and spire from the east



Plate 13: Detail of clock tower and spire from the south-west



Plate 14: South-west elevation, detail of small porch window in the north-west side, from the south-west



Plate 15: North-east elevation, general view from the north

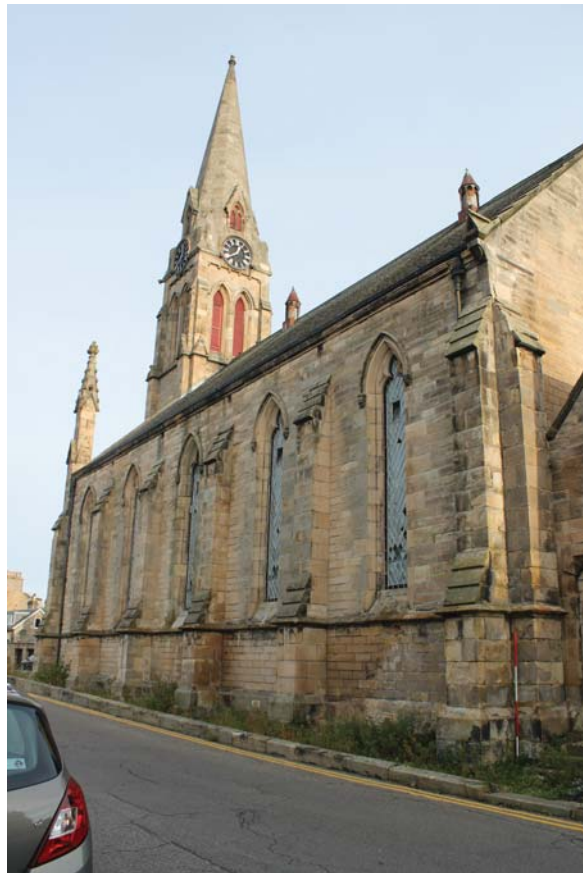


Plate 16: South-west elevation, general view from the south



Plate 17: North-east elevation, detail of corner buttress from the north

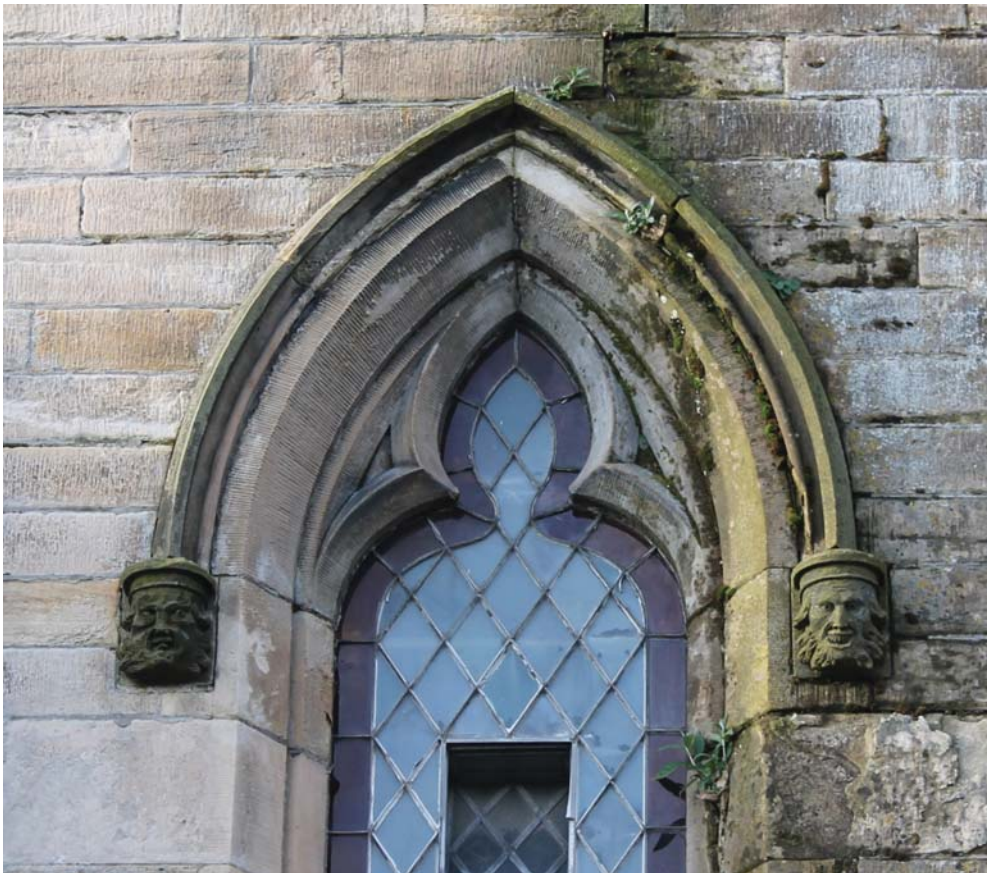


Plate 18: North-east elevation, detail of hood mould over north-westernmost window from the north-east

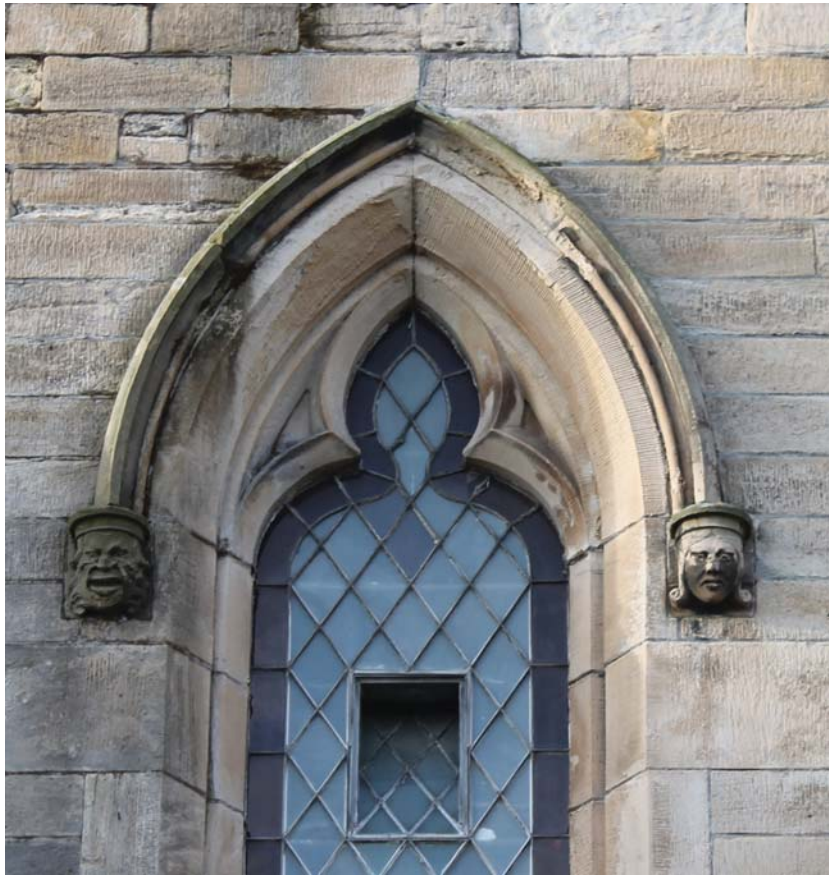


Plate 19: North-east elevation, detail of hood mould over second north-westernmost window from the north-east

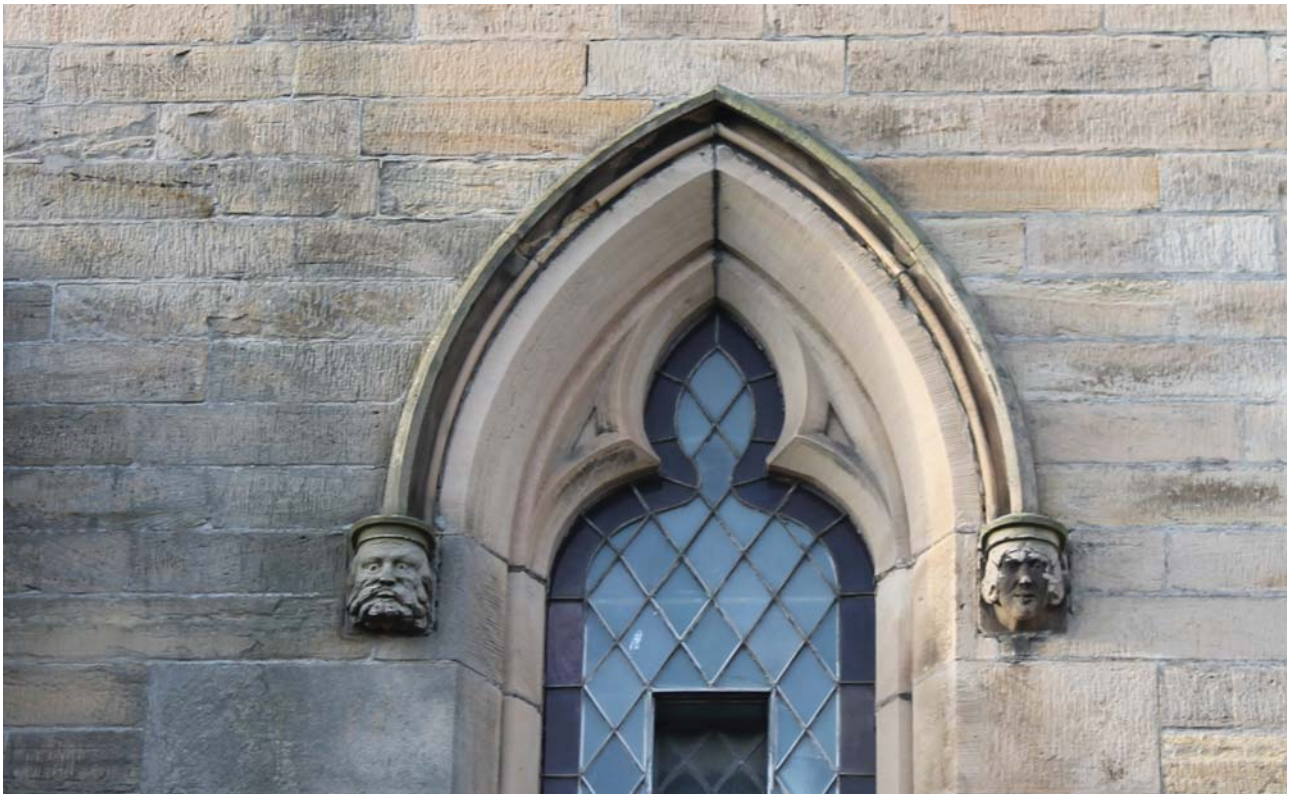


Plate 20: North-east elevation, detail of hood mould over second south-easternmost window from the north-east



Plate 21: North-east elevation, detail of hood mould over central window from the north-east

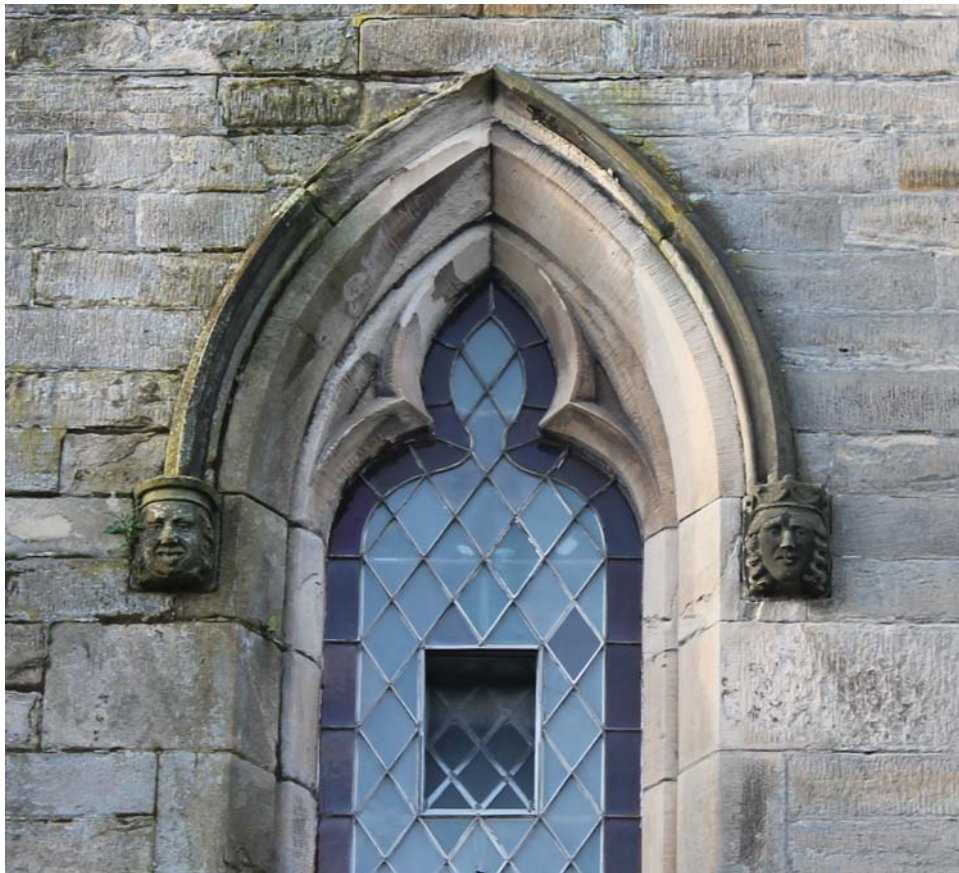


Plate 22: North-east elevation, detail of hood mould over south-eastermost window from the north-east



Plate 23: South-west elevation, detail of hood mould over north-westernmost window from the south-west



Plate 24: South-west elevation, detail of hood mould over second north-westernmost window from the south-west



Plate 25: South-west elevation, detail of hood mould over central window from the south-west

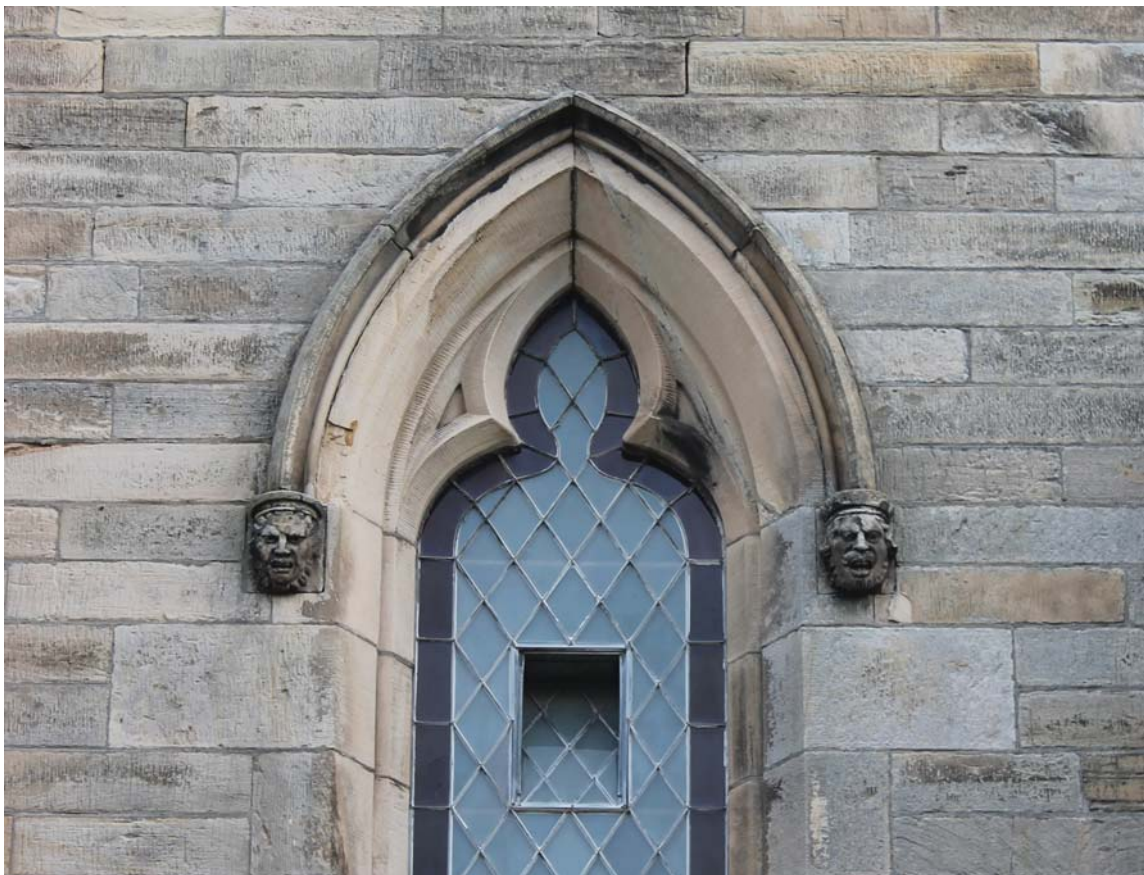


Plate 26: South-west elevation, detail of hood mould over second south-easternmost window from the south-west

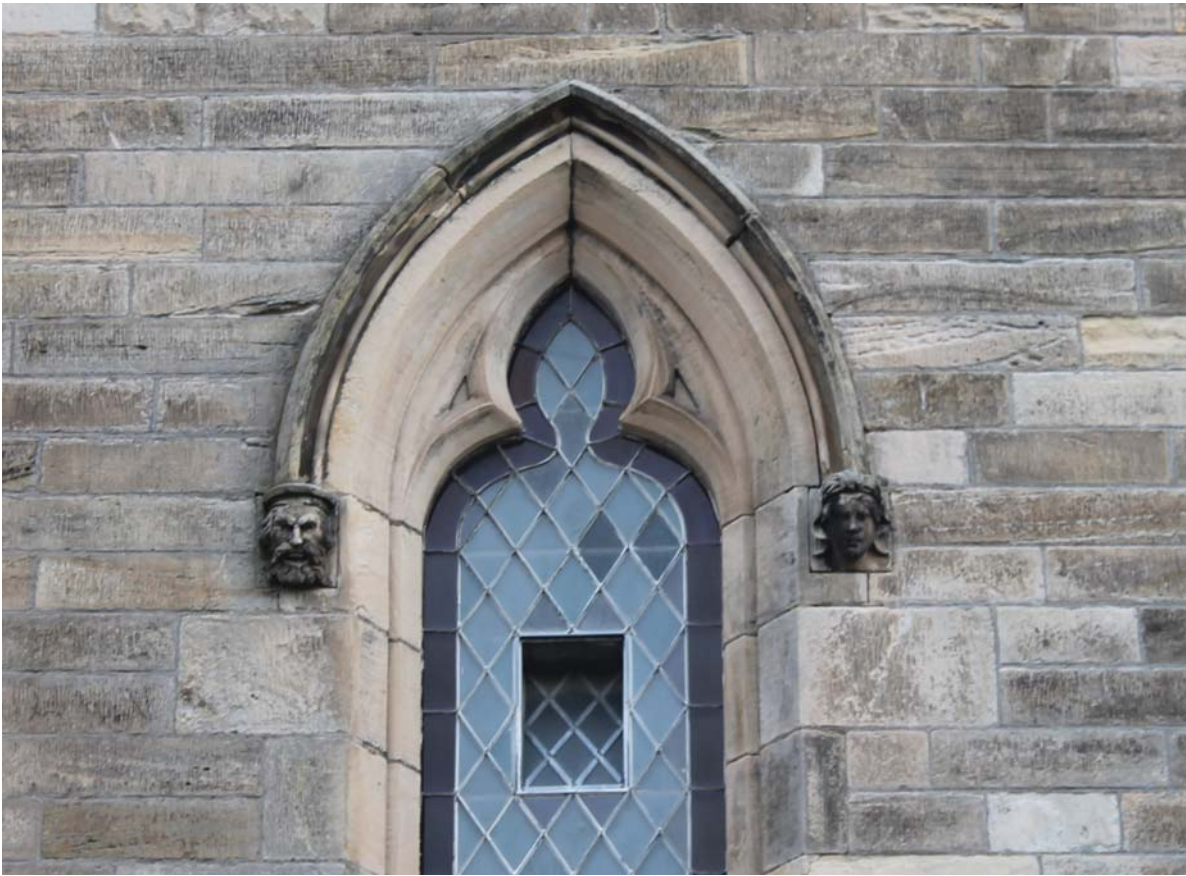


Plate 27: South-west elevation, detail of hood mould over south-eastermost window from the south-west



Plate 28: South-west elevation, detail of north-westernmost window from the south-west



Plate 29: South-west elevation, detail of vent below window from the south-west



Plate 30: South-east elevation, general view from the east



Plate 31: North-east elevation, general view of the south-east end showing doorway through to the small corridor 0/2, from the north-east



Plate 32: South-west elevation, detail of bricked-up doorway on the south-east end from the south-west



Plate 33: South-east elevation, detail of the windows to the south-west side from the south-east



Plate 34: South-east elevation, detail of vent on the original building from the south-west



Plate 35: South-east elevation, detail of circular first floor window to the upper gallery from the SSE



Plate 36: Detail of vent on the apex of the roof of the main body of the church for the east



Plate 37: North-east elevation, general view of the later 19th century extension and doorway to the basement from the north-east



Plate 38: Room -1/1, general view showing boarded-up window from the north-west



Plate 39: Room -1/1, general view from the south-east



Plate 40: Room 0/1, general view from the south-east



Plate 41: Room 0/1, general view from the north-west



Plate 42: Room 0/1, general view from the north



Plate 43: Room 0/1, general view of the south-west wall from the north



Plate 44: Room 0/1, general view from the east



Plate 45: Room 0/1, detail of the excavation trial pit in the western corner showing the stone foundation walls from the NNE



Plate 46: Room 0/1, detail of the shapes of the pews leftover after their removal on the timber panelling of the north-east wall, from the south-west



Plate 47: Room 0/1, detail of the column capital and frieze and balcony to the upper gallery from the north-east



Plate 48: Room 0/2, detail of the present main entrance to the side (north-east) wall, from the SWW



Plate 49: Room 0/3, general view from the SEE



Plate 50: Room 0/3, general view from the NNW



Plate 51: Room 0/3, general view from the north



Plate 52: Room 0/3, general view from the SWW



Plate 53: Room 0/4, detail of windows in the south-east wall, from the NWW

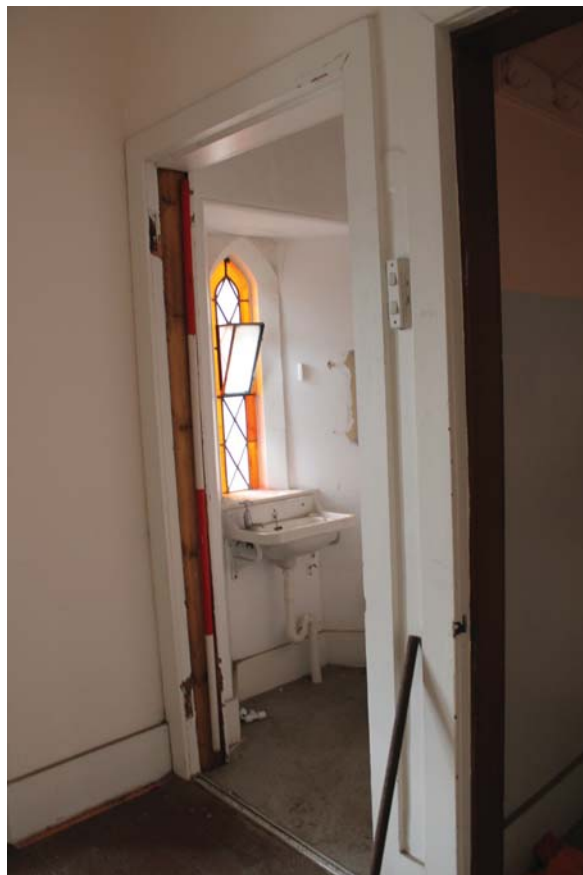


Plate 54: Room 0/4, detail of small window in the south-east wall from the north



Plate 55: Room 0/5, general view from the south



Plate 56: Room 0/5, general view from the south-west



Plate 57: Room 0/5, detail of main entrance doorway from the south



Plate 58: Room 0/5, detail of main entrance porch from the south-east



Plate 59: Room 0/5, detail of floor to main porch from the south-east



Plate 60: Room 0/5, detail of window in north-east wall of porch from the south-west



Plate 61: Room 0/5, detail of decorative roof of porch



Plate 62: Room 0/5, detail of decorative moulding of porch in the north corner from the south



Plate 63: Room 0/5, detail of railing to the stairwell window in the south-west wall from the north



Plate 64: Room 1/1, general view from the north



Plate 65: Room 1/1, general view from the west



Plate 66: Room 1/1, general view from the south



Plate 67: Room 1/1, general view of the rear seating gallery from the south



Plate 68: Room 1/1, general view of roof from the north



Plate 69: Room 1/1, detail of corbel and base of rafter on the south-west wall from the north



Plate 70: Room 1/1, detail of circular vent in the roof



Plate 71: Room 1/1, detail of louvered window of the main window in the north-east wall from the west



Plate 72: Room 1/1, detail of mechanism for operation of the ventilation system in front of window in the north-east wall from the west

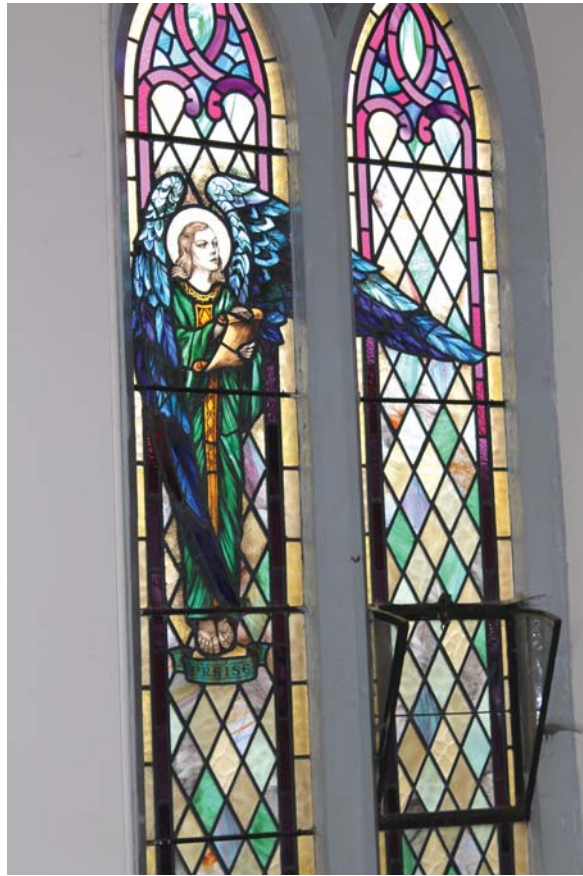


Plate 73: Room 1/1, detail of stained glass window in the north-east side of the south-east wall from the north



Plate 74: Room 1/1 detail of stained glass window in the south-west side of the south-east wall from the west

6 DISCUSSION

- 6.1 The phasing of the church is quite straightforward, with the original church built in 1852 – 1854 as a nave with an upper gallery and porch to the north-west and another entrance and vestry to the south-east. This was then extended between 1868 – 1902 on the south-east side by a small single bay to create a larger room, which removed the original side entrances to the nave on this side of the church.
- 6.2 Despite the obvious removal of the pews and entrance to the south-east of the nave and some floorboards, the original character of the church with its upper galleries and fine timber work and stained glass windows remain relatively intact and remains a fine example of an early Victorian church.

7 CONCLUSIONS

- 7.1 This report has successfully recorded the redundant South Church prior to its conversion to a climbing wall centre. No further historic building recording is recommended prior to development.

8 REFERENCES

8.1 Bibliographical references

DOSA (Dictionary of Scottish Architects) 2014 'A & W Reid: Basic Biographical Details', http://www.scottisharchitects.org.uk/architect_full.php?id=200175, Accessed 12th November 2014

Historic Scotland 2014 'Moray Street South High Church, Elgin (Ref: 30831), <http://data.historic-scotland.gov.uk/pls/htmldb/f?p=2200:15:0::::BUILDING:30831>, Accessed 12th November 2014

Scottish Planning Policy SPP23. 2008 *Archaeology and Planning*. Scottish Government Nov 2008.

Scottish Government 2011 *Planning and Archaeology 2/2011*.

8.2 Cartographic references

ca. 1747 – 55	William Roy	<i>Military Map of Scotland</i>
1822	John Wood	<i>Plan of the Town of Elgin from Actual Survey</i>
1838	Robert Ray	<i>Plan of the Burgh of Elgin from Actual Survey</i>
1868	Ordnance Survey	<i>Elgin Sheet VII.16, VII.16.6 & Sheet VII.16.6.2</i>
1906	Ordnance Survey	<i>Elginshire Sheet VII.SE</i>

APPENDIX 1: PHOTOGRAPHIC REGISTER

Black & White Print & Colour Digital # 1

Frame	Area	Description	Taken From	Date
1	NW Elevation	Detail of footings to the door surround on the NE side	NW	29/10/2014
2	NW Elevation	Detail of footings to the door surround on the SW side	NE	29/10/2014
3	NE Elevation	Detail of small lancet window to main porch on the NE side	NE	29/10/2014
4	SW Elevation	Detail of small vent below one of the stained glass windows to the main body of the church		29/10/2014
5	SW Elevation	Detail of blocked doorway in the former entrance to the church to the SE end	SW	29/10/2014
6	SW Elevation	General view (whole)	S	29/10/2014
7	SW Elevation	General view (ground floor)	S	29/10/2014
8	SW Elevation	General view	S	29/10/2014
9	SW Elevation	Detail of NW-most stained glass window to the main body of the church	SW	29/10/2014
10 – 13	SW Elevation	Detail of carved figures forming the stops to the hood moulds over the stained glass windows in each bay, from the SE moving to the NW ends	SW	29/10/2014
14	SW Elevation	Detail of the stained glass window to the porch on the NW side	SW	29/10/2014
15	SW Elevation	General view	W	29/10/2014
16	SW Elevation	General view of the clock tower	SW	29/10/2014
17	SW Elevation	Detail of the small lancet window to the main porch on the NW side	SW	29/10/2014
18 – 19	NE Elevation	General view	E	29/10/2014
20	NE Elevation	General view of rear former vestry to the SE end	NE	29/10/2014
21	NE Elevation	Detail of roof vent	E	29/10/2014
22	NE Elevation	Detail of spire	E	29/10/2014
23 – 27	NE Elevation	Detail of carved figures forming the stops to the hood moulds over the stained glass windows in each bay, from the SE moving to the NW ends	NE	29/10/2014
28	NE Elevation	Detail of corner buttress on NW side	N	29/10/2014
29	NW Elevation	Detail of spire	N	29/10/2014
30	NE Elevation	General view	N	29/10/2014
31	NW Elevation	Detail of capitals on the NE side of the door surround	NW	29/10/2014
32	NW Elevation	Detail of capitals on the SW side of the door surround	NE	29/10/2014
33	NW Elevation	General view	NW	29/10/2014
34	NW Elevation	Detail of carved head/stop for hood mould on the NE side	NW	29/10/2014
35	NW Elevation	Detail of carved head/stop for hood mould on the SW side	N	29/10/2014
36	-	Registration	-	29/10/2014

Black & White Print & Colour Digital # 2

Frame	Area	Description	Taken From	Date
1	Room 0/3	Detail looking up a former surround for light fitting	NW	29/10/2014
2 – 3	Room 0/4	Detail of window in the SE wall	N	29/10/2014
4 – 5	Room 0/4	Detail of window in the SE wall	NW	29/10/2014
6 – 7	Room 0/3	General view	SWW	29/10/2014
8 – 9	Room 0/3	General view	N	29/10/2014
10 – 11	Room 0/3	General view	NW	29/10/2014
12 – 13	Room 0/3	General view	SEE	29/10/2014
14 – 15	Room 0/2	Detail of doorway	W	29/10/2014
16 – 17	Room 0/1	Detail of marks in timber panelling where pews were located/painted around	SW	29/10/2014
18 – 19	Room 0/1	Detail of balcony	SW	29/10/2014
20 – 21	Room 0/1	Detail of column head supporting balcony		29/10/2014
22 – 23	Room 0/1	General view	NW	29/10/2014
24 – 25	Room 0/1	General view	SE	29/10/2014
26 – 27	Room 0/1	General view	N	29/10/2014
28 – 29	Room 0/1	General view	E	29/10/2014
30 – 31	Room 0/1	General view	W	29/10/2014
32	Room -1/1	Detail of pile of decorative stonework in the basement area along the SE wall	S	29/10/2014
33	Room -1/1	General view	SE	29/10/2014
34	Room -1/1	Detail of guttering lying against the NE wall	N	29/10/2014
35	Room -1/1	General view	NW	29/10/2014
36	-	Registration	-	29/10/2014

Black & White Print & Colour Digital # 3

Frame	Area	Description	Taken From	Date
1 – 2	Room 1/1	Detail of stained glass window in the SE wall (SW side)	W	29/10/2014
3 – 5	Room 1/1	Detail of roof	NW	29/10/2014
6 – 8	Room 1/1	General view	NW	29/10/2014
9 – 10	Room 1/2	Detail of looking into the base of the clock tower	SE	29/10/2014
11 – 13	Room 1/1	Detail of mechanism for operating ventilation system in ceiling on the NE wall	W	29/10/2014
14 – 15	Room 1/1	General view	SW	29/10/2014
16 – 17	Room 1/1	General view	W	29/10/2014
18 – 19	Room 1/1	Detail of balcony	SW	29/10/2014
20 – 21	Room 1/1	General view	S	29/10/2014
22 – 23	Room 1/1	General view	SE	29/10/2014
24 – 25	Room 1/1	Detail of roof	S	29/10/2014
26 – 27	Room 1/1	General view looking down at ground floor level	S	29/10/2014
28 – 29	Room 1/1	General view	S	29/10/2014
30 – 31	Room 1/1	General view	W	29/10/2014
32 – 33	Room 1/1	General view looking down at ground floor level	W	29/10/2014
34 – 35	Room 1/1	General view	N	29/10/2014
36	-	Registration	-	29/10/2014

Black & White Print & Colour Digital # 4

Frame	Area	Description	Taken From	Date
1 – 2	Room 0/5	Detail of banister rail in front of window to the stair on the SW side	N	29/10/2014
3 – 4	Room 0/5	General view	SW	29/10/2014
5 – 6	Room 0/5	Detail of main front door	SE	29/10/2014
7 – 8	Room 0/5	Floor detail of main porch	SE	29/10/2014
9 – 10	Room 0/5	Window detail in porch	SW	29/10/2014
11 – 12	Room 0/5	Moulding detail on N corner of porch	S	29/10/2014
13 – 14	Room 0/5	Looking up at decorative ceiling in porch	Below	29/10/2014
15 – 16	Room 0/5	General view of SE wall	NW	29/10/2014
17 – 18	Room 0/5	General view looking at store room cupboard door in NE wall	SW	29/10/2014
19 - 21	Room 0/5	General view	SE	29/10/2014
22 – 23	Room 0/5	General view	SSE	29/10/2014
24 – 25	Room 0/5	Detail of main entrance	E	29/10/2014
26 – 27	Room 0/5	General view	NE	29/10/2014
28 – 29	Room 1/1	General view looking down stairwell on NE side	SE	29/10/2014
30 – 31	Room 1/1	Detail of stained glass window	N	29/10/2014
32 – 33	Room 1/1	Detail of gutter beneath window in NE wall	W	29/10/2014
34 – 35	Room 1.1	Detail of louvered window in stained glass window win NE wall	W	29/10/2014
36	-	Registration	-	29/10/2014

Black & White Print & Colour Digital # 5

Frame	Area	Description	Taken From	Date
1	SE Elevation	Detail of moulding over main doorway	W	29/10/2014
2 – 3	-	General view	W	29/10/2014
4 - 5	-	General view, main body of church	W	29/10/2014
6 – 7	-	General view	W	29/10/2014
8 – 9	SW Elevation	Detail of top of buttress	S	29/10/2014
10 – 11	SW Elevation	Detail of clock tower	S	29/10/2014
12 – 13	SW Elevation	General view, main body of church	S	29/10/2014
14 – 15	SW Elevation	General view	S	29/10/2014
16 – 17	SE Elevation	Detail of circular window in gable	SSW	29/10/2014
18 – 19	SE Elevation	General view of SW side	SSW	29/10/2014
20	SE Elevation	Detail of circular vent below window	SE	29/10/2014
21	NE Elevation	Detail of lamp over doorway to the SE side	E	29/10/2014
22	NE Elevation	Detail of the basement doorway to the late 19 th century extension	NE	29/10/2014
23	SE Elevation	General view	SE	29/10/2014
24	-	General view	N	29/10/2014
25	NW Elevation	General view	NW	29/10/2014
26 – 27	Room 0/1	Detail of large area excavated to SE side	N	29/10/2014
28 – 29	Room 0/1	Detail of large area excavated to W corner	N	29/10/2014
30 – 31	Room 0/1	Detail of large area excavated to W corner	NE	29/10/2014
32	Room 1/1	Detail of corbel supporting rafter on SW wall	N	29/10/2014
33	Room 1/1	Rafter detail	N	29/10/2014
34	Room 1/1	Ceiling detail	N	29/10/2014
35	Room 1/1	Ceiling detail	N	29/10/2014
36	-	Registration	-	29/10/2014

APPENDIX 2: DISCOVERY AND EXCAVATION IN SCOTLAND (DES) REPORT

LOCAL AUTHORITY:	Moray Council
PROJECT TITLE/SITE NAME:	South Church, Elgin
PROJECT CODE:	AOC 22857
PARISH:	Elgin
NAME OF CONTRIBUTOR:	Diana Sproat
NAME OF ORGANISATION:	AOC Archaeology Group
TYPE(S) OF PROJECT:	Historic Building Recording
NMRS NO(S):	NJ26SW 55
SITE/MONUMENT TYPE(S):	Church
SIGNIFICANT FINDS:	None
NGR (2 letters, 6 figures)	NJ 21510 62538
START DATE (this season)	29 th October 2014
END DATE (this season)	29 th October 2014
PREVIOUS WORK (incl. DES ref.)	None
MAIN (NARRATIVE) DESCRIPTION: (May include information from other fields)	AOC Archaeology Group was commissioned by Grant and Geoghegan on behalf of their client to undertake an historic building survey prior to the development of the former South Church on Moray Street in Elgin. The works were required as part of the planning condition on the development which will see the conversion of the Church into a climbing wall centre. The church was built as the South Free Church between 1852 – 1854 by A & W Reid as a five-by-one bay gothic style church with a main nave, vestry to the south-east and porch to the north-west, with large clock tower and spire. In the later 19 th century, a small extension was added to the south-east side. Made redundant in about 2000, the church has had all of its pews removed as well as some areas of flooring and panelling, although the timber columns and decorative work to the balcony of the upper gallery still remain.
PROPOSED FUTURE WORK:	None
CAPTION(S) FOR ILLUSTRS:	None
SPONSOR OR FUNDING BODY:	J Maunder
ADDRESS OF MAIN CONTRIBUTOR:	AOC Archaeology Group; Edgefield Road Industrial Estate; Loanhead, Midlothian EH20 9SY
EMAIL ADDRESS:	admin@aocarchaeology.com
ARCHIVE LOCATION	Archive to be deposited in NMRS



AOC Archaeology Group, Edgefield Industrial Estate, Edgefield Road, Loanhead EH20 9SY
tel: 0131 440 3593 | fax: 0131 440 3422 | e-mail: edinburgh@aocarchaeology.com

www.aocarchaeology.com