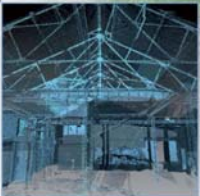


Auchincruive, South Ayrshire: Archaeological Evaluation Data Structure Report

AOC Project 23112
12th May 2016



ARCHAEOLOGY

HERITAGE

CONSERVATION

Auchincruive, South Ayrshire: Archaeological Evaluation Data Structure Report

On Behalf of:	Taylor Wimpey West Scotland Ltd Unit C, Ground Floor Cirrus Building Glasgow Airport Business Park Marchburn Drive Abbotsinch Paisley PA3 2SJ
National Grid Reference (NGR):	NS 38090 23349
AOC Project No:	23112
OASIS Entry No:	251647
Prepared by:	Kevin Paton
Date of Fieldwork:	3rd to 11th May 2016
Date of Report:	16th May 2016

This document has been prepared in accordance with AOC standard operating procedures.

Author: Kevin Paton	Date: 16th May 2016
Approved by: Martin Cook	Date: 16th May 2016
Draft/Final Report Stage: Draft	Date: 16th May 2016

Enquiries to: AOC Archaeology Group
Edgefield Industrial Estate
Edgefield Road
Loanhead
EH20 9SY

Tel. 0131 440 3593
Fax. 0131 440 3422
e-mail. admin@aocarchaeology.com



Contents

	Page
List of Illustrations	3
List of Plates	3
List of Appendices	3
Abstract.....	4
1 INTRODUCTION	5
1.1 Background	5
1.2 Location.....	5
1.3 Archaeological Background.....	5
2 OBJECTIVES	6
3 METHODOLOGY	7
4 RESULTS	7
5 CONCLUSION AND RECOMMENDATIONS.....	7
6 REFERENCES	8
APPENDIX 1: Trench Descriptions	11
APPENDIX 2: Context Register	20
APPENDIX 3: Photographic Record	20
APPENDIX 4: ‘Discovery and Excavation in Scotland’ Report.....	23

List of Illustrations

Figure 1	Site location
Figure 2	Extract from Roy's map, ca. 1747 – 1755
Figure 3	Extract from Ordnance Survey map, 1860
Figure 4	Extract from Ordnance Survey map, 1911
Figure 5	Site plan of development area showing location of evaluation trenches

List of Plates

Plate 1	General view of Trench 16
---------	---------------------------

List of Appendices

Appendix 1	Trench Descriptions
Appendix 2	Context Registers
Appendix 3	Photographic Record
Appendix 4	' <i>Discovery and Excavation in Scotland</i> ' Report

Abstract

This report presents the results of an archaeological evaluation undertaken in relation to a proposed residential development at the former Agricultural college at Auchincruive, South Ayrshire.

The evaluation required an 8% trenching sample of the previously undeveloped development area. A total of 46 trenches of varying lengths and alignments were excavated throughout the site, encountering post medieval and modern field drains, some rig and furrow and two narrow stone culverts most likely dating to the post medieval period. No significant archaeological features or artefacts were revealed.

No further works are considered necessary within the development area.

1 INTRODUCTION

1.1 Background

1.1.1 AOC Archaeology Group was commissioned by Taylor Wimpey West Scotland Ltd. to undertake an archaeological evaluation prior to a planning application for a proposed development at Auchincruive, South Ayrshire. The evaluation was undertaken in order to satisfy the requirements of the local planning authority, South Ayrshire Council who are advised on archaeological matters by the West of Scotland Archaeology Service (WoSAS). The works were conducted according to the terms of a *Written Scheme of Investigation* (AOC 2016) approved on behalf of South Ayrshire Council by WoSAS and in accordance with the principles set out in *Scottish Planning Policy* (Scottish Government 2014) and *PAN 2/2011 Planning & Archaeology* (Scottish Government 2011).

1.2 Location

1.2.1 The proposed development area is located in South Ayrshire, west of Ayr at Auchincruive and is centred on NGR: NS 38090 23349 (Figure 1). The site is currently partly greenfield site and partly occupied by the disused and demolished West of Scotland Agricultural College and its outbuildings.

1.3 Archaeological Background

1.3.1 The development area is located in the former estate of Auchincruive, with the former stables, built in ca. 1788, located to the north-east side. Called Gibbsyard, this is to be retained. Roy's map of ca. 1747 -1755 shows the extent of the estate in the mid-18th century, with the development area as open land with a landscaped garden complete with radial paths to the south-west (Figure 2). Auchincruive House is shown to the east.

1.3.2 The 1860 Ordnance Survey map then shows the development area with Gibbsyard in place (Figure 3). It was clearly a large complex, and there was also a gasometer on the site. The remainder of the development site is open land, although further garden buildings/follies, such as Oswalds Temple, have been built to the north. The site remained much as it was throughout the late 19th century and into the early 20th century, as we can see on the 1911 Ordnance Survey map (Figure 4). Into the later 20th century, the landscape has been largely used for agriculture. Gibbsyard was restored in 1931 and is now home to the West of Scotland Agricultural College.



Figure 2: Extract from Roy's map, ca. 1747 – 1755



Figure 3: Extract from Ordnance Survey map, 1860

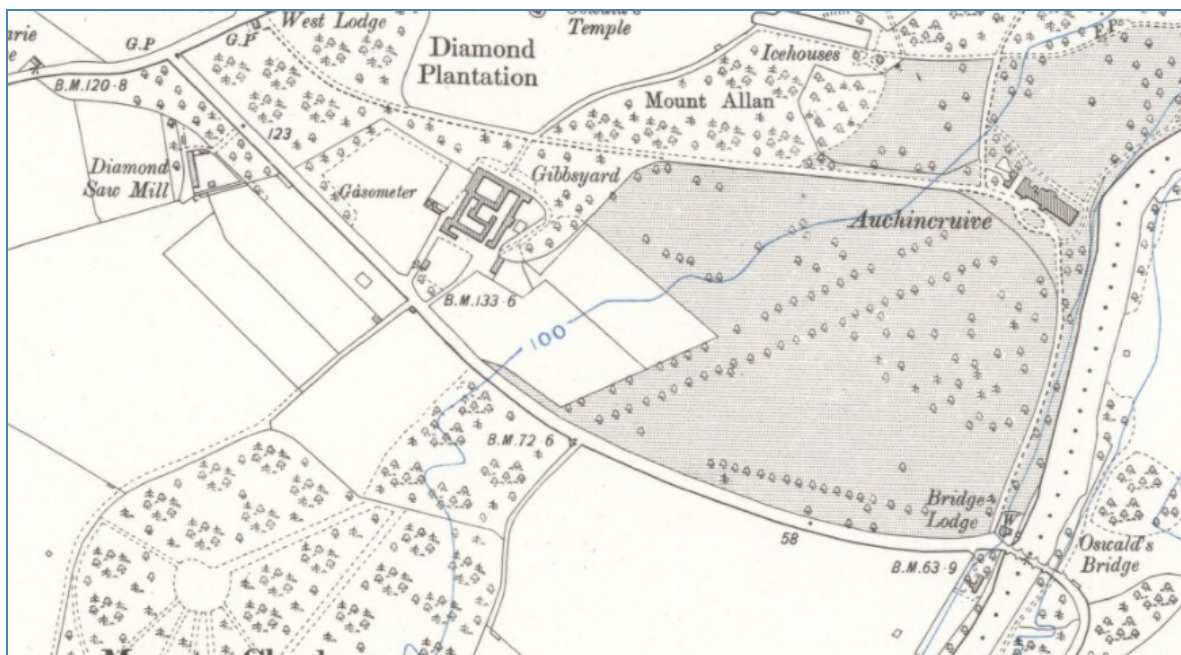


Figure 4: Extract from Ordnance Survey map, 1911

2 OBJECTIVES

2.1 The objectives of the archaeological evaluation were:

- i) to determine and assess the character, extent, condition, quality, date and significance of any buried archaeological remains within the proposed development area;
- ii) to advise and implement an appropriate form of mitigation, such as excavation, post-excavation analyses and publication given the infeasibility of preserving the archaeological material *in situ*, should significant archaeological remains be encountered.

3 METHODOLOGY

- 3.1 The evaluation was to comprise machine trenching of an 8% sample of the 8.3 hectare undeveloped ground, totaling 6600 m². However, due to the presence of BT and power cables in the areas as well as large areas of mature trees and bushes, the available evaluation area had to be reduced. In total, 2032 metres of linear trench was excavated using a 13 tonne excavator with a 2 m wide ditching bucket, equating to 4064 m².
- 3.3 Excavation was undertaken in shallow units/spits until the first significant archaeological horizon. All machine excavation was supervised by an experienced field archaeologist and according to AOC Archaeology Group's standard operating procedures, and as per the methodology within the *Archaeological Written Scheme of Investigation* (AOC 2016).

4 RESULTS

- 4.1 The archaeological evaluation was undertaken between the 3rd to 11th May 2016. Weather conditions were fair allowing for good archaeological visibility throughout the evaluation. In total, 46 trenches totalling 2032 m of linear trench was opened, varying in alignment and length (Figure 5).
- 4.2 The topsoil throughout the development area was mainly a mid brown sandy clay loam with occasional small stone inclusions averaging 0.4 m in depth (Plate 1). The underlying geology consisted of orange and pink clays and orange clayey sands with frequent medium stones and rare large boulders.
- 4.3 Two stone lined culverts were revealed along the NW edge of the site. The first, [1901], was revealed within Trench 19 and was aligned SE-NW, running into an area of marshland and peat to the immediate NW of the development area (Plate 2). It measured 0.45 m wide and 0.2 m deep with an internal drainage gap 0.15 m wide set between roughly hewn sandstone blocks. The culvert was also based with squared flagstones. The second culvert, [2801] was revealed in Trenches 28 and 29, aligned NE-SW and entering the development area from the field to the immediate SW (Plate 3). It measured 0.4 m wide and 0.27 m deep with an internal drainage gap measuring 0.18 m wide, lined by square cut sandstone blocks. This culvert had no base but was capped by squared flagstones.
- 4.4 No other features were revealed throughout the evaluation with trenches containing rubble drains, ceramic tile drains and modern plastic duct drains. Agricultural furrows were only noted in Trench 16, in a very shallow hollow on the slopes in this area. Trench 19, 21 and 22 all contained made ground deposits that had been used to level the area for hard standing and to cover the peat deposits underneath. Trench 27 also contained over 1 m of made ground most likely relating to the construction of the sheds to the immediate NW.
- 4.5 No significant archaeological features or artefacts were revealed.

5 CONCLUSION AND RECOMMENDATIONS

- 5.1 The trenching only encountered agricultural drainage features in the form of stone lined, rubble, ceramic tile, and plastic duct field drains of modern date. No significant archaeological features or artefacts were revealed throughout the evaluation and no further archaeological works are deemed necessary within the development area. These recommendations will have to be approved by WoSAS on behalf of South Ayrshire Council.

6 REFERENCES

AOC 2016, *Auchincruive, South Ayrshire: Archaeological Evaluation Written Scheme of Investigation*
unpublished client report

Scottish Government 2014 *Scottish Planning Policy 2014*

Scottish Government 2011 *Planning And Archaeology 2/2011*



Plate 1 - General view of Trench 16



Plate 2 - General view of Culvert [1901]



Plate 3 - General view of Culvert [2801]

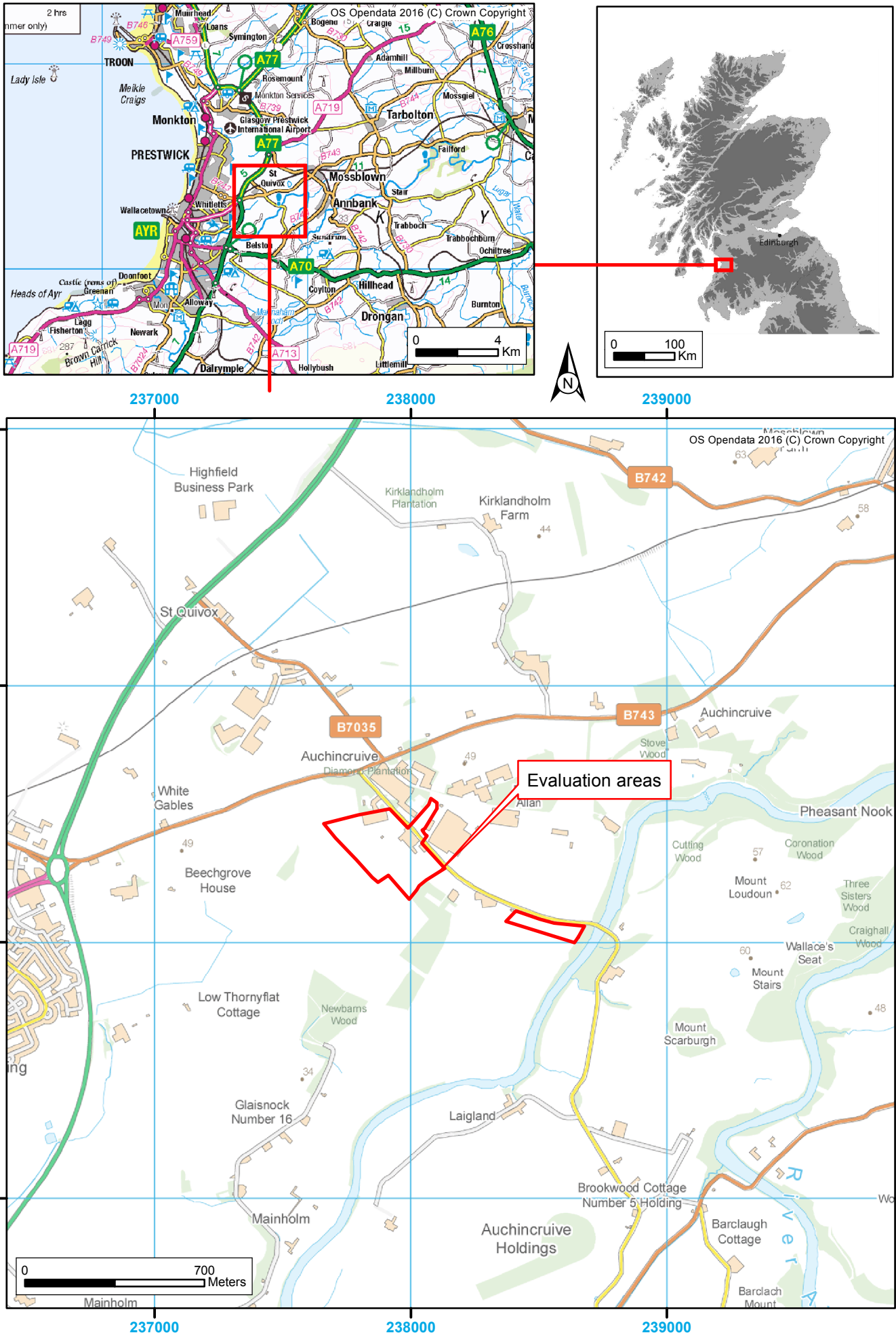
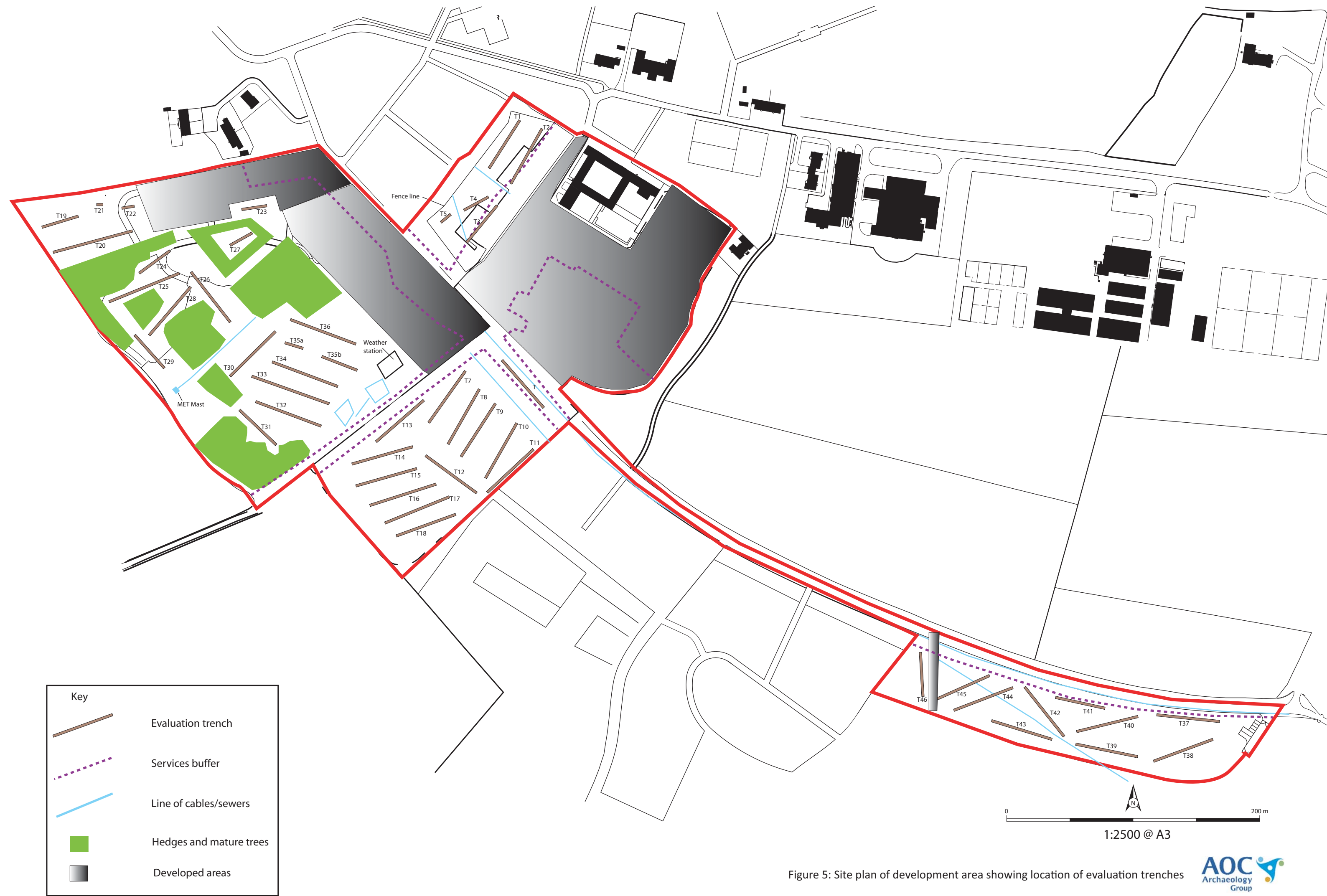


Figure 1: Site Location Plan



Key

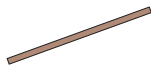




-  Evaluation trench
-  Services buffer
-  Line of cables/sewers
-  Hedges and mature trees
-  Developed areas

Figure 5: Site plan of development area showing location of evaluation trenches

Auchincruive, South Ayrshire: Archaeological Evaluation Data Structure Report

Section 2: Appendices

APPENDIX 1: Trench Descriptions

Trench 1

<i>Dimensions</i>	45 m by 2 m
<i>Total Area</i>	90 m ²
<i>Excavated Orientation</i>	NE to SW
<i>Soil Make-up</i>	Topsoil – mid brown sandy clay loam with occ. small stone inclusions – max depth 0.5 m
<i>Significant Features</i>	None
<i>Other Features</i>	Rubble drain at 3m aligned NW-SE; Ceramic drain at 4 m to 20 m aligned NE-SW; Modern drains at 21 m and 40 m aligned NW-SE.
<i>Natural Subsoil</i>	Orange and pale yellow clayey sand
<i>Finds</i>	None

Trench 2

<i>Dimensions</i>	50 m by 2 m
<i>Total Area</i>	100 m ²
<i>Excavated Orientation</i>	NE to SW
<i>Soil Make-up</i>	Topsoil – mid brown sandy clay loam with occ. small stone inclusions – max depth 0.6 m
<i>Significant Features</i>	None
<i>Other Features</i>	Rubble drain at 36m to 50 m aligned NE-SW, and at 50 m aligned NW-SE; Modern drains at 28 m, 32 m and 34 m aligned NW-SE.
<i>Natural Subsoil</i>	Orange sand and gravel to 5 m then orange sand to 13 m then pale yellow sand to 20 m then orange sand
<i>Finds</i>	None

Trench 3

<i>Dimensions</i>	40 m by 2 m
<i>Total Area</i>	80 m ²
<i>Excavated Orientation</i>	NE to SW
<i>Soil Make-up</i>	Topsoil – mid brown sandy clay loam with occ. small stone inclusions – max depth 0.6 m
<i>Significant Features</i>	None
<i>Other Features</i>	None
<i>Natural Subsoil</i>	Orange sand
<i>Finds</i>	None

Trench 4

<i>Dimensions</i>	22 m by 2 m
<i>Total Area</i>	44 m ²
<i>Excavated Orientation</i>	ENE to WSW
<i>Soil Make-up</i>	Topsoil – mid brown sandy clay loam with occ. small stone inclusions – max depth 0.5 m
<i>Significant Features</i>	None
<i>Other Features</i>	None
<i>Natural Subsoil</i>	Orange and pale yellow clayey sand
<i>Finds</i>	None

Trench 5

<i>Dimensions</i>	10 m by 2 m
<i>Total Area</i>	20 m ²
<i>Excavated Orientation</i>	NE to SW
<i>Soil Make-up</i>	Topsoil – mid brown sandy clay loam with occ. small stone inclusions – max depth 0.5 m
<i>Significant Features</i>	None
<i>Other Features</i>	None
<i>Natural Subsoil</i>	Orange and pale yellow clayey sand
<i>Finds</i>	None

Trench 6

<i>Dimensions</i>	50 m by 2 m
<i>Total Area</i>	100 m ²
<i>Excavated Orientation</i>	NW to SE
<i>Soil Make-up</i>	Topsoil – mid brown sandy clay loam with occ. small stone inclusions – max depth 0.45 m
<i>Significant Features</i>	None
<i>Other Features</i>	Ceramic drain at 8 m, 17.2 m, 22.4 m, 38 m aligned NE-SW
<i>Natural Subsoil</i>	Orangey brown sandy clay
<i>Finds</i>	None

Trench 7

<i>Dimensions</i>	50 m by 2 m
<i>Total Area</i>	100 m ²
<i>Excavated Orientation</i>	N to S
<i>Soil Make-up</i>	Topsoil – mid brown sandy clay loam with occ. small stone inclusions – max depth 0.5 m
<i>Significant Features</i>	None
<i>Other Features</i>	Ceramic drain at 0 m to 3.7 m, 12 m to 15.6 m, 23 m to 26.4 m, 34.4 m to 38.4 m aligned NE-SW; Rubble drain at 43.8 m aligned E-W.
<i>Natural Subsoil</i>	Orangey brown clayey sand to 17 m then purplish brown clay
<i>Finds</i>	None

Trench 8

<i>Dimensions</i>	50 m by 2 m
<i>Total Area</i>	100 m ²
<i>Excavated Orientation</i>	N to S
<i>Soil Make-up</i>	Topsoil – mid brown sandy clay loam with occ. small stone inclusions – max depth 0.35 m
<i>Significant Features</i>	None
<i>Other Features</i>	Ceramic drains at 11 m to 14 m, 28.6 m to 31.4 m aligned NE-SW. Also at 36.7 m to 38.2 m, 43.4 m to 45 m aligned NW-SE. Rubble drains at 2.8 m, 10.9 m, 18.6 m, 33.6 m and 41.3 m aligned E-W
<i>Natural Subsoil</i>	Orange and pink sandy clay
<i>Finds</i>	None

Trench 9

<i>Dimensions</i>	50 m by 2 m
<i>Total Area</i>	100 m ²
<i>Excavated Orientation</i>	NW to SE
<i>Soil Make-up</i>	Topsoil – mid brown sandy clay loam with occ. small stone inclusions – max depth 0.4 m
<i>Significant Features</i>	None
<i>Other Features</i>	Ceramic drain at 6.6 m to 9.6 m aligned NE-SW. Rubble drains at 3 m, 10.8 m, 18.3 m, 25.5 m, 41 m aligned E-W
<i>Natural Subsoil</i>	Orange sand to 6 m then orange and pink clay to 30 m then orange sand
<i>Finds</i>	None

Trench 10

<i>Dimensions</i>	50 m by 2 m
<i>Total Area</i>	100 m ²
<i>Excavated Orientation</i>	N to S
<i>Soil Make-up</i>	Topsoil – mid brown sandy clay loam with occ. small stone inclusions – max depth 0.45 m
<i>Significant Features</i>	None
<i>Other Features</i>	Ceramic drain at 3.6 m to 5.4 m aligned NW-SE. Rubble drains at 4 m, 12 m, 19.6 m, 27 m, 35 m aligned E-W

Natural Subsoil Orange sand to 6.5 m then orange and pink clay to 43 m then orange sand
Finds None

Trench 11

Dimensions 50 m by 2 m
Total Area 100 m²
Excavated Orientation NE to SW
Soil Make-up Topsoil – mid brown sandy clay loam with occ. small stone inclusions – max depth 0.6 m
Significant Features None
Other Features Ceramic drain at 8 m, 17.2 m, 22.4 m, 38 m aligned NE-SW
Natural Subsoil Orange and pink clay
Finds None

Trench 12

Dimensions 50 m by 2 m
Total Area 100 m²
Excavated Orientation E to W
Soil Make-up Topsoil – mid brown sandy clay loam with occ. small stone inclusions – max depth 0.43 m
Significant Features None
Other Features Ceramic drain at 14 m to 26 m, 31.3 m to 41.1 m aligned E-W
Natural Subsoil Orange and pink clay until 13.5 m then yellowish brown clayey sand
Finds None

Trench 13

Dimensions 50 m by 2 m
Total Area 100 m²
Excavated Orientation NNE to SSW
Soil Make-up Topsoil – mid brown sandy clay loam with occ. small stone inclusions – max depth 0.41 m
Significant Features None
Other Features Ceramic drain at 12.4 m to 18.5 m; 29.7 m to 34.1 m aligned ENE-WSW
Natural Subsoil Orange and pink clay 4.2 m then orange and yellow clayey sand until 34 m then orange and pink clay
Finds None

Trench 14

Dimensions 50 m by 2 m
Total Area 100 m²
Excavated Orientation ENE to WSW
Soil Make-up Topsoil – mid brown sandy clay loam with occ. small stone inclusions – max depth 0.55 m
Significant Features None
Other Features Ceramic drain at 0 m to 9.3 m aligned NE-SW
Natural Subsoil Orange and pink clay – plough scarred
Finds None

Trench 15

Dimensions 50 m by 2 m
Total Area 100 m²
Excavated Orientation SW to NE
Soil Make-up Topsoil – mid brown sandy clay loam with occ. small stone inclusions – max depth 0.36 m
Significant Features None
Other Features Ceramic drain at 9.1 m to 18.8 m aligned NNE-SSW. Rubble drain at 4m aligned E-W
Natural Subsoil Orange and pink clay
Finds None

Trench 16

<i>Dimensions</i>	55 m by 2 m
<i>Total Area</i>	110 m ²
<i>Excavated Orientation</i>	SW to NE
<i>Soil Make-up</i>	Topsoil – mid brown sandy clay loam with occ. small stone inclusions – max depth 0.41 m
<i>Significant Features</i>	None
<i>Other Features</i>	Ceramic drain at 13.4 m to 28.2 m aligned NNE-SSW. Rubble drains at 6.2 m, 10.2 m aligned E-W
<i>Natural Subsoil</i>	Orange and pink clay – plough scarred
<i>Finds</i>	None

Trench 17

<i>Dimensions</i>	55 m by 2 m
<i>Total Area</i>	110 m ²
<i>Excavated Orientation</i>	SW to NE
<i>Soil Make-up</i>	Topsoil – mid brown sandy clay loam with occ. small stone inclusions – max depth 0.5 m
<i>Significant Features</i>	None
<i>Other Features</i>	Ceramic drain at 23.1 m aligned E-W. Rubble drains at 3 m, 7 m, 11 m, 15 m, 34.4 m, 42.3 m aligned E-W
<i>Natural Subsoil</i>	Orange clayey sand until 14 m then orange and pink clay
<i>Finds</i>	None

Trench 18

<i>Dimensions</i>	50 m by 2 m
<i>Total Area</i>	100 m ²
<i>Excavated Orientation</i>	SW to NE
<i>Soil Make-up</i>	Topsoil – mid brown sandy clay loam with occ. small stone inclusions – max depth 0.42 m
<i>Significant Features</i>	None
<i>Other Features</i>	Ceramic drain at 0 m to 18.6 m aligned NNE-SSW. Rubble drains at 4.2 m, 32.2 m, 36 m, 44 m aligned E-W
<i>Natural Subsoil</i>	Orange and pink clay until 33 m then orange clayey sand
<i>Finds</i>	None

Trench 19

<i>Dimensions</i>	30 m by 2 m
<i>Total Area</i>	0 m ²
<i>Excavated Orientation</i>	SW to NE
<i>Soil Make-up</i>	Made ground – mid brown clay overlying dark grey clay containing modern rubbish – max. depth 1 m. Peat (from 20 m +) – dark brown organic rich peat – max depth 0.5 m
<i>Significant Features</i>	Stone lined culvert [1901] at 16.8 m
<i>Other Features</i>	Ceramic drain at 26.7 m aligned E-W. Modern drain at 14 m aligned SE-NW
<i>Natural Subsoil</i>	Orange and pink clay – significantly disturbed – until 18 m then mid grey clay
<i>Finds</i>	None

Trench 20

<i>Dimensions</i>	65 m by 2 m
<i>Total Area</i>	130 m ²
<i>Excavated Orientation</i>	SW to NE
<i>Soil Make-up</i>	Topsoil – mid greyish brown clay loam with occ. small stone inclusions – max depth 0.5 m
<i>Significant Features</i>	None
<i>Other Features</i>	Rubble drains at 3 m, 7 m, 11 m, 15 m aligned NW-SE. Modern duct at 28.5 m to 32.5 m aligned E-W.
<i>Natural Subsoil</i>	Orange and pink clay, disturbed from 22 m to 35 m and 48 m to 54 m

<i> Finds</i>	None
Trench 21	
<i> Dimensions</i>	5 m by 2 m
<i> Total Area</i>	10 m ²
<i> Excavated Orientation</i>	ENE to WSW
<i> Soil Make-up</i>	Made ground – type 1 measuring 0.15 m thick over dark brown and grey clay containing modern rubbish – max depth 1 m
<i> Significant Features</i>	None
<i> Other Features</i>	Ceramic drains at 0.5 m aligned ENE-WSW and at 0.2 m aligned NE-SW
<i> Natural Subsoil</i>	Not reached as ceramic drains were flooding the trench
<i> Finds</i>	None
Trench 22	
<i> Dimensions</i>	10 m by 2 m
<i> Total Area</i>	20 m ²
<i> Excavated Orientation</i>	NE to SW
<i> Soil Make-up</i>	Made ground – type 1 measuring 0.2 m thick over dark brown clay measuring 0.15 m thick, over dark grey clayey ash measuring 0.55 m – max depth 0.9 m
<i> Significant Features</i>	None
<i> Other Features</i>	Ceramic drains at 6 m to 8 m aligned E-W. Modern type 1 track at 1 m to 4 m aligned E-W
<i> Natural Subsoil</i>	Pink clay
<i> Finds</i>	None
Trench 23	
<i> Dimensions</i>	20 m by 2 m
<i> Total Area</i>	40 m ²
<i> Excavated Orientation</i>	NE to SW
<i> Soil Make-up</i>	Topsoil – mid brown sandy clay loam with occ. small stone inclusions – max depth 0.45 m
<i> Significant Features</i>	None
<i> Other Features</i>	Ceramic drain at 15.6 m aligned NW-SE.
<i> Natural Subsoil</i>	Pale yellow and orange sand
<i> Finds</i>	None
Trench 24	
<i> Dimensions</i>	30 m by 2 m
<i> Total Area</i>	60 m ²
<i> Excavated Orientation</i>	SW to NE
<i> Soil Make-up</i>	Topsoil – mid brown sandy clay loam with occ. small stone inclusions – max depth 0.45 m
<i> Significant Features</i>	None
<i> Other Features</i>	Rubble drains at 0 m, 4.6 m, 8.8 m, 12.8 m aligned NW-SE. Modern ducts at 18.1 m to 20 m, 19.6 m to 24 m aligned N-S
<i> Natural Subsoil</i>	Orangey brown clayey sand
<i> Finds</i>	None
Trench 25	
<i> Dimensions</i>	60 m by 2 m
<i> Total Area</i>	120 m ²
<i> Excavated Orientation</i>	SW to NE
<i> Soil Make-up</i>	Topsoil – mid brown sandy clay loam with occ. small stone inclusions – max depth 0.43 m
<i> Significant Features</i>	None
<i> Other Features</i>	Rubble drains at 1.3 m, 9.1 m, 21.3 m, 40.6 m, 44.6 m, 53.3 m, 58.4 m aligned NW-SE. Modern duct at 5.1 m to 8.6 m aligned N-S.
<i> Natural Subsoil</i>	Orangey brown clayey sand to 12.7 m then orange and pink clay

<i>Finds</i>	None
Trench 26	
<i>Dimensions</i>	50 m by 2 m
<i>Total Area</i>	100 m ²
<i>Excavated Orientation</i>	SE to NW
<i>Soil Make-up</i>	Topsoil – mid brown sandy clay loam with occ. small stone inclusions – max depth 0.37 m
<i>Significant Features</i>	None
<i>Other Features</i>	Rubble drains at 4.2 m to 12 m, 16.8 m to 25.2 m aligned NW-SE.
<i>Natural Subsoil</i>	Orange and pink clay to 6 m then orange clayey sand to 44 m then orangey brown clayey sand
<i>Finds</i>	None
Trench 27	
<i>Dimensions</i>	20 m by 2 m
<i>Total Area</i>	40 m ²
<i>Excavated Orientation</i>	N to S
<i>Soil Make-up</i>	Made ground – mid brown sandy clay loam mixed with lumps of orange and pink clay – max depth 1 m. Former topsoil – very compact grey clay – max depth -0.3 m.
<i>Significant Features</i>	None
<i>Other Features</i>	None
<i>Natural Subsoil</i>	Orangey pink sandy clay
<i>Finds</i>	None
Trench 28	
<i>Dimensions</i>	50 m by 2 m
<i>Total Area</i>	100 m ²
<i>Excavated Orientation</i>	S to N
<i>Soil Make-up</i>	Topsoil – mid brown sandy clay loam with occ. small stone inclusions – max depth 0.56 m
<i>Significant Features</i>	Culvert [2801] at 0 m to 10.7 m
<i>Other Features</i>	Rubble drains at 19.5 m, 25.6 m aligned E-W, and at 27.1 m to 29.7 m aligned NW-SE.
<i>Natural Subsoil</i>	Orangey brown clayey sand
<i>Finds</i>	None
Trench 29	
<i>Dimensions</i>	35 m by 2 m
<i>Total Area</i>	70 m ²
<i>Excavated Orientation</i>	SE to NW
<i>Soil Make-up</i>	Topsoil – mid brown sandy clay loam with occ. small stone inclusions – max depth 0.38 m
<i>Significant Features</i>	Culvert [2801] at 30.5 m aligned E-W
<i>Other Features</i>	None
<i>Natural Subsoil</i>	Orange and pink clay
<i>Finds</i>	None
Trench 30	
<i>Dimensions</i>	50 m by 2 m
<i>Total Area</i>	100 m ²
<i>Excavated Orientation</i>	SW to NE
<i>Soil Make-up</i>	Topsoil – mid brown sandy clay loam with occ. small stone inclusions – max depth 0.41 m
<i>Significant Features</i>	None
<i>Other Features</i>	None
<i>Natural Subsoil</i>	Orange and pink clay to 13 m then orangey red clayey sand until 17 m then red clayey sand and pale yellow sand.

Finds None

Trench 31

Dimensions 40 m by 2 m
Total Area 80 m²
Excavated Orientation NW to SE
Soil Make-up Topsoil – mid brown sandy clay loam with occ. small stone inclusions – max depth 0.36 m
Significant Features None
Other Features Ceramic drain at 4.2 m to 9.6 m aligned NNW-SSE
Natural Subsoil Orange and pink clay
Finds None

Trench 32

Dimensions 55 m by 2 m
Total Area 110 m²
Excavated Orientation W to E
Soil Make-up Topsoil – mid brown sandy clay loam with occ. small stone inclusions – max depth 0.35 m
Significant Features None
Other Features Rubble drains at 38.4 m to 40.3 m, 45.6 m to 47.4 m, 52.6 m to 54.2 m aligned NE-SW
Natural Subsoil Orange and pink clay until 17 m then orangey brown sandy clay until 28 m then orange and pink clay
Finds None

Trench 33

Dimensions 65 m by 2 m
Total Area 130 m²
Excavated Orientation W to E
Soil Make-up Topsoil – mid brown sandy clay loam with occ. small stone inclusions – max depth 0.44 m
Significant Features None
Other Features Site investigation pit at 54 m
Natural Subsoil Orange and pink clay until 12.7 m then orangey brown sandy clay until 50 m then orange and yellow sand.
Finds None

Trench 34

Dimensions 55 m by 2 m
Total Area 110 m²
Excavated Orientation W to E
Soil Make-up Topsoil – mid brown sandy clay loam with occ. small stone inclusions – max depth 0.42 m
Significant Features None
Other Features Ceramic drain at 34.4 m to 36.5 m aligned NW-E
Natural Subsoil Orange clayey sand until 40 m then orange and pink clay
Finds None

Trench 35a

Dimensions 15 m by 2 m
Total Area 30 m²
Excavated Orientation W to E
Soil Make-up Topsoil – mid brown sandy clay loam with occ. small stone inclusions – max depth 0.4 m
Significant Features None
Other Features Ceramic drain at 12.8 m aligned NW-SE
Natural Subsoil Orange clayey sand
Finds None

Trench 35b

<i>Dimensions</i>	30 m by 2 m
<i>Total Area</i>	60 m ²
<i>Excavated Orientation</i>	W to E
<i>Soil Make-up</i>	Topsoil – mid brown sandy clay loam with occ. small stone inclusions – max depth 0.48 m
<i>Significant Features</i>	None
<i>Other Features</i>	None
<i>Natural Subsoil</i>	Orange clayey sand
<i>Finds</i>	None

Trench 36

<i>Dimensions</i>	55 m by 2 m
<i>Total Area</i>	110 m ²
<i>Excavated Orientation</i>	W to E
<i>Soil Make-up</i>	Topsoil – mid brown sandy clay loam with occ. small stone inclusions – max depth 0.4 m
<i>Significant Features</i>	None
<i>Other Features</i>	Rubble drain at 41.7 m to 43.5 m aligned NW-SE
<i>Natural Subsoil</i>	Brown sandy clay until 22 m then orange clayey sand until 33 m then orange and pink clay until 43 m then orangey brown sand and gravel
<i>Finds</i>	None

Trench 37

<i>Dimensions</i>	50 m by 2 m
<i>Total Area</i>	100 m ²
<i>Excavated Orientation</i>	NW to SE
<i>Soil Make-up</i>	Topsoil – mid brown sandy loam with occ. small stone inclusions – max depth 0.4 m
<i>Significant Features</i>	None
<i>Other Features</i>	Rubble drain at 12.8 m to 14.5 m, 26.2 m to 27.9 m, 39.7 m to 41.8 m aligned N-S
<i>Natural Subsoil</i>	Pale yellow and orange sand with large gravels until 9 m then pale grey clay until 26 m then pale brown sandy clay
<i>Finds</i>	None

Trench 38

<i>Dimensions</i>	50 m by 2 m
<i>Total Area</i>	100 m ²
<i>Excavated Orientation</i>	W to E
<i>Soil Make-up</i>	Topsoil – mid brown sandy loam with occ. small stone inclusions – max depth 0.4 m
<i>Significant Features</i>	None
<i>Other Features</i>	Rubble drain at 20 m aligned N-S. Modern type 1 filled track at 11 m aligned N-S
<i>Natural Subsoil</i>	Orange sandy clay and pale yellowish grey sandy clay
<i>Finds</i>	None

Trench 39

<i>Dimensions</i>	50 m by 2 m
<i>Total Area</i>	100 m ²
<i>Excavated Orientation</i>	NW to SE
<i>Soil Make-up</i>	Topsoil – mid brown sandy loam with occ. small stone inclusions – max depth 0.4 m
<i>Significant Features</i>	None
<i>Other Features</i>	None
<i>Natural Subsoil</i>	Orange clayey sand until 2 m then pale yellow clayey sand until 26 m then orange sandy clay
<i>Finds</i>	None

Trench 40

<i>Dimensions</i>	50 m by 2 m
<i>Total Area</i>	100 m ²
<i>Excavated Orientation</i>	W to E
<i>Soil Make-up</i>	Topsoil – mid brown sandy loam with occ. small stone inclusions – max depth 0.38 m
<i>Significant Features</i>	None
<i>Other Features</i>	None
<i>Natural Subsoil</i>	Pale yellow and orange clayey sand
<i>Finds</i>	None

Trench 41

<i>Dimensions</i>	40 m by 2 m
<i>Total Area</i>	80 m ²
<i>Excavated Orientation</i>	NW to SE
<i>Soil Make-up</i>	Topsoil – mid brown sandy loam with occ. small stone inclusions – max depth 0.37 m
<i>Significant Features</i>	None
<i>Other Features</i>	None
<i>Natural Subsoil</i>	Orange clayey sand
<i>Finds</i>	None

Trench 42

<i>Dimensions</i>	50 m by 2 m
<i>Total Area</i>	100 m ²
<i>Excavated Orientation</i>	N to S
<i>Soil Make-up</i>	Topsoil – mid brown sandy loam with occ. small stone inclusions – max depth 0.45 m
<i>Significant Features</i>	None
<i>Other Features</i>	Coal and ash deposit at 2.2 m to 7.1 m – probably related to sewer excavations
<i>Natural Subsoil</i>	Orange clayey sand
<i>Finds</i>	None

Trench 43

<i>Dimensions</i>	50 m by 2 m
<i>Total Area</i>	100 m ²
<i>Excavated Orientation</i>	NW to SE
<i>Soil Make-up</i>	Topsoil – mid brown sandy loam with occ. small stone inclusions – max depth 0.38 m
<i>Significant Features</i>	None
<i>Other Features</i>	Ash and coal deposit from 0 m to 11 m. Modern type 1 filled track at 8.5 m aligned NE-SW
<i>Natural Subsoil</i>	Orange clayey sand
<i>Finds</i>	None

Trench 44

<i>Dimensions</i>	50 m by 2 m
<i>Total Area</i>	100 m ²
<i>Excavated Orientation</i>	W to E
<i>Soil Make-up</i>	Topsoil – mid brown sandy loam with occ. small stone inclusions – max depth 0.38 m
<i>Significant Features</i>	None
<i>Other Features</i>	Ash and coal deposit from 22.4 mm to 40.5 m. Ceramic tile drain at 41.3 m to 48.4 m aligned ENE-WSW. Rubble drain at 47.1 m to 48.4 m aligned NE-SW.
<i>Natural Subsoil</i>	Orange clayey sand
<i>Finds</i>	None

Trench 45

<i>Dimensions</i>	45 m by 2 m
<i>Total Area</i>	90 m ²
<i>Excavated Orientation</i>	W to E

<i>Soil Make-up</i>	Topsoil – mid brown sandy loam with occ. small stone inclusions – max depth 0.36 m
<i>Significant Features</i>	None
<i>Other Features</i>	Area of modern disturbance from 17 m to 25.7 m and a large modern cut at 31 m to 38 m.
<i>Natural Subsoil</i>	Orange clayey sand
<i>Finds</i>	None

Trench 46

<i>Dimensions</i>	35 m by 2 m
<i>Total Area</i>	70 m ²
<i>Excavated Orientation</i>	N to S
<i>Soil Make-up</i>	Topsoil – mid brown sandy loam with occ. small stone inclusions – max depth 0.4 m
<i>Significant Features</i>	None
<i>Other Features</i>	Modern service tracks at 6.8 m to 8.5 m, 11.8 m to 13.7 m aligned NE-SW; 17 m to 18.5 m aligned NW-SE
<i>Natural Subsoil</i>	Pale yellow sand
<i>Finds</i>	None

APPENDIX 2: Context Register

Context No.	Description and Interpretation
1901	Stone lined and stone based culvert aligned NW-SE within Trench 19. Measures 0.45 m wide by 0.2 m deep and is formed by irregularly shaped sandstone blocks sitting on flat flagstones. Internal gap is 0.15 m wide. Filled by deposit [1902]. Not seen within Trench 20 to the SE. Post medieval culvert
1902	Dark brown silty clay deposit within culvert [1901] measuring 0.15 m by 0.2 m. Fill of culvert [1901]
2801	Stone lined and stone capped culvert formed using squared light grey sandstone blocks. Aligned NE-SW (approx.) within Trench 28. Measures 0.4 m wide by 0.27 m deep. Internal gap is 0.18 m wide. Post medieval culvert
2802	Dark brown silty clay measuring 0.18 m by .27 m. Fill of culvert [2801]

APPENDIX 3: Photographic Record

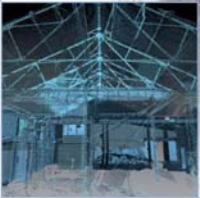
Frame	Description	From	Date
1-5	Views of field A – pre-ex	Var	3/5/16
6-9	Views of area formerly built on to NE of Field A	Var	3/5/16
10	Cast iron pipe in T1	NE	3/5/16
11	Post ex view of T1	SW	3/5/16
12-13	View of cable running into Field A	Var	3/5/16
14	Post ex view of T2	SW	3/5/16
15	BT cable tape in service track	W	3/5/16
16	Possible line of BT cable to W	E	3/5/16
17	Post ex view of T3	SW	3/5/16
18	Post ex view of T4	WSW	3/5/16
19	Post ex view of T5	SW	3/5/16
20-21	Backfilled trenches in Field A	Var	3/5/16

22-25	Views of Field B from N corner	Var	3/5/16
26	Post ex view of T6	SE	3/5/16
27	View of box to NW of Field B containing BT cable	SE	3/5/16
28	Line of BT cable in Field B	NW	3/5/16
29	Post ex view of T7	S	3/5/16
30	Post ex view of T8	S	4/5/16
31	Post ex view of T9	S	4/5/16
32	Post ex view of T10	S	4/5/16
33	Post ex view of T11	SW	4/5/16
34	Post ex view of T12	W	4/5/16
35	Post ex view of T13	SSW	4/5/16
36	Post ex view of T14	NE	4/5/16
37	Post ex view of T15	NE	4/5/16
38	Post ex view of T16	NE	5/5/16
39	Post ex view of T17	NE	5/5/16
40	Post ex view of T18	NE	5/5/16
41-43	Views of Field C from SW	Var	5/5/16
44	Modern cut in T19 and modern rubbish	SE	5/5/16
45	Post ex view of T19	SW	5/5/16
46	Post ex view of T20	NE	5/5/16
47-48	Culvert [1901]	Var	5/5/16
49	NW-facing section through [1901]	NW	5/5/16
50	Post ex view of T21	W	5/5/16
51	Post ex view of T22	NE	5/5/16
52-53	Hard standing in Area C	Var	5/5/16
54-57	Views of Area C – NE	Var	5/5/16
58	Post ex view of T23	SW	5/5/16
59-60	Field C backfilled	Var	5/5/16
61-67	W edge of Area D	Var	6/5/16
68-70	Small enclosed field in Area D – W end	Var	6/5/16
71	Modern drains in T24	SW	6/5/16
72	Post ex view of T24	NE	6/5/16
73-80	Views of trees at SW end of T25	Var	6/5/16
81	Post ex view of T25	NE	6/5/16
82-95	Views of Area D from SE end of T26	Var	6/5/16
96	Post ex view of T26	NW	6/5/16
97	W-facing section of T27	W	6/5/16
98	Post ex view of T27	S	6/5/16
99-100	Culvert [2801]	Var	6/5/16
101	Post ex view of T28	N	6/5/16
102	View of cable line from MET mast	SW	6/5/16

103-105	Area full of tree stumps and logs to NW of cable track	Var	6/5/16
106-108	Trees and bushes along SW edge of site	Var	6/5/16
109-111	Views of SE edge of Area D	Var	6/5/16
112	Post ex view of T29	NW	6/5/16
113-116	Area of stumps and logs to SE of cable	Var	6/5/16
117	Post ex view of T30	NE	6/5/16
118-120	NW edge of Area D backfilled	Var	6/5/16
121	Post ex view of T31	SE	9/5/16
122-123	Weather station along SE edge	NW	9/5/16
124-127	Tanks, manholes and reed filled sumps along SE edge	Var	9/5/16
128	Post ex view of T32	E	9/5/16
129	Post ex view of T33	E	9/5/16
130	Post ex view of T34	E	9/5/16
131	Post ex view of T35a	E	9/5/16
132	Post ex view of T35b	E	9/5/16
133	Post ex view of T36	E	9/5/16
134-135	Views of Area D backfilled	Var	9/5/16
136-140	Views of Field E from SE corner	Var	10/5/16
141	Post ex view of T37	SE	10/5/16
142	Post ex view of T38	E	10/5/16
143	Post ex view of T39	SE	10/5/16
144	Post ex view of T40	E	10/5/16
145	Post ex view of T42	S	10/5/16
146	Post ex view of T43	SE	10/5/16
147	Post ex view of T44	E	11/5/16
148	Post ex view of T45	E	11/5/16
149	Post ex view of T46	N	11/5/16
150-152	Views of Area E backfilled	Var	11/5/16

APPENDIX 4: 'Discovery and Excavation in Scotland' Report

LOCAL AUTHORITY:	South Ayrshire Council
PROJECT TITLE/SITE NAME	Auchincruive, South Ayrshire
PROJECT CODE:	AOC 23112
PARISH:	Ayr
NAME OF CONTRIBUTOR:	Kevin Paton
NAME OF ORGANISATION:	AOC Archaeology Group
TYPE(S) OF PROJECT:	Archaeological Evaluation
NMRS NO(S)	None
SITE/MONUMENT TYPE(S):	N/A
SIGNIFICANT FINDS:	N/A
NGR (2 letters, 6 figures)	NS 38090 23349
START DATE (this season)	3 rd May 2016
END DATE (this season)	11 th May 2016
PREVIOUS WORK (incl. DES ref.)	None
MAIN (NARRATIVE) DESCRIPTION: (May include information from other fields)	<p>An archaeological evaluation was undertaken by AOC Archaeology Group in relation to a proposed residential development at the former Agricultural college at Auchincruive, South Ayrshire.</p> <p>The evaluation required an 8% trenching sample of the previously undeveloped development area. A total of 46 trenches of varying lengths and alignments were excavated throughout the site, encountering post medieval and modern field drains, some rig and furrow and two narrow stone culverts most likely dating to the post medieval period. No significant archaeological features or artefacts were revealed.</p> <p>No further works are considered necessary within the development area.</p>
PROPOSED FUTURE WORK:	None
CAPTION(S) FOR ILLUSTRS:	---
SPONSOR OR FUNDING BODY:	Taylor Wimpey West Scotland Ltd
ADDRESS OF MAIN CONTRIBUTOR:	Edgefield Road Industrial Estate, Loanhead, Midlothian, EH20 9SY
EMAIL ADDRESS:	admin@aocarchaeology.com
ARCHIVE LOCATION (intended/deposited)	Archive to be deposited in NMRS



AOC Archaeology Group, Edgefield Industrial Estate, Edgefield Road, Loanhead EH20 9SY
tel: 0131 440 3593 | fax: 0131 440 3422 | e-mail: admin@aocarchaeology.com

www.aocarchaeology.com