

Merchiston House, Brookfield, Renfrewshire: Archaeological Evaluation Data Structure Report

AOC Project 23326
25th January 2016



ARCHAEOLOGY

| HERITAGE

| CONSERVATION

Merchiston House, Brookfield, Renfrewshire: Archaeological Evaluation Data Structure Report

On Behalf of:	CgMs Consulting Ltd. 9-10 St Andrew Square Edinburgh EH2 2AF
National Grid Reference (NGR):	NS 42075 64320
OASIS No:	241569
AOC Project No:	23326
Prepared by:	Kevin Paton
Date of Fieldwork:	18th to 22nd January 2016
Date of Report:	25th January 2016

This document has been prepared in accordance with AOC standard operating procedures.

Author: Kevin Paton **Date:** 25th January 2016

Approved by: Martin Cook **Date:** 25th January 2016

Draft/Final Report Stage: Final **Date:** 4th February 2016

Enquiries to: AOC Archaeology Group
Edgefield Industrial Estate
Edgefield Road
Loanhead
EH20 9SY

Tel. 0131 440 3593
Fax. 0131 440 3422
e-mail. admin@aocarchaeology.com



Contents

	Page
List of Illustrations	3
List of Plates	3
List of Appendices	3
Abstract	4
1 INTRODUCTION	5
1.1 Background	5
1.2 Location.....	5
1.3 Archaeological Background.....	5
2 OBJECTIVES	5
3 METHODOLOGY	6
4 RESULTS	6
5 CONCLUSION AND RECOMMENDATIONS	8
6 REFERENCES	9
APPENDIX 1: Trench Descriptions	11
APPENDIX 2: Photographic Register	16
APPENDIX 3: ‘Discovery and Excavation in Scotland’ Report	17

List of Illustrations

- Figure 1 Site location
Figure 2 Evaluation trench locations

List of Plates

- Plate 1 Post excavation view of Trench 17
Plate 2 Post excavation view of Trench 4

List of Appendices

- Appendix 1 Trench Descriptions
Appendix 2 Photographic Record
Appendix 3 '*Discovery and Excavation in Scotland*' Report

Abstract

This report presents the results of an archaeological evaluation undertaken in relation to a residential development on the grounds of the former Merchiston House, Brookfield, Renfrewshire.

The evaluation required an 8% trenching sample of the previously undeveloped ground to the S and W of the former Merchiston Hospital buildings and associated infrastructure. The evaluation trenches demonstrated that the majority of the site has been disturbed by the previous hospital construction with up to 2 m of made ground overlying the underlying clays in some areas. In the SW corner of the site there were signs of undisturbed former soil horizons being present, but no archaeological features or artefacts were encountered.

The evaluation has demonstrated that the area is archaeologically sterile and no further archaeological works are required. This recommendation will require the approval of the West of Scotland Archaeology Service (WoSAS).

1 INTRODUCTION

1.1 Background

1.1.1 AOC Archaeology Group was commissioned by CGMS Consulting Ltd. on behalf of their client, to undertake an archaeological evaluation of a residential development at the former Merchiston Hospital situated on the grounds of Merchiston House, Brookfield, Renfrewshire. The evaluation was undertaken in order to satisfy the requirements of the local planning authority, Renfrewshire Council, who are advised on archaeological matters by the West of Scotland Archaeology Service (WoSAS). The works were conducted according to the terms of a *Written Scheme of Investigation* (Connolly 2015) approved by WoSAS on behalf of Renfrewshire Council and in accordance with the principles set out in *Scottish Planning Policy* (Scottish Government 2014) and *PAN 2/2011 Planning & Archaeology* (Scottish Government 2011).

1.2 Location

1.2.1 The development area is located to the immediate N and W of Bridge of Weir Road and Barrochan Road respectively, centred on NGR: NS 42075 64320 (Figure 1). The site is bounded to the W by housing that forms part of Brookfield, and to the N by a timber yard. The area to be evaluated formed the landscaped grounds to the S of the hospital buildings.

1.3 Archaeological Background

1.3.1 No archaeological work has been undertaken on the Site or in the immediate vicinity, nor does the WoSAS Historic Environment Record (HER) record any archaeological features or find spots in the area. However, a number of prehistoric features have been recorded in the area, possibly of greatest interest is a circular fort formerly located approximately 880m to the south-west of the Site (WoSASPIN 7771), and Roy's map (1752-55) shows a settlement comprising three buildings and an enclosure in the southern part of the Site. It also shows a circular enclosure, which may represent a late prehistoric enclosed settlement that may lie within the Site (Connolly 2015).

1.3.2 In the course of the preparation of the WSI, maps and aerial photographs held by the National Library of Scotland have been examined, as has satellite imagery. It is difficult to locate the Site with certainty on Roy's map (1752-55), but it would appear that the southern part of the Site lay within the policies of Milliken House and the northern part in farmland. The Site remained undeveloped until the mid 19th century when Merchiston House was built (Connolly 2015). After the Second World War the house became a hospital. It was demolished around 1979 when the hospital was redeveloped. This and subsequent redevelopment saw the construction of numerous buildings and substantial amounts of landscaping; the new buildings were located on terraces and the area to their north appears to have been landscaped to form a recreational area with paths and a playing field. The buildings were demolished in 2013.

2 OBJECTIVES

2.1 The objectives of the archaeological evaluation were:

- i) to determine the presence or absence of any archaeological remains that could be subject to disturbance during proposed development;
- ii) if present, to determine the nature, extent and significance of any remains in order to inform an appropriate mitigation strategy (likely to be preservation by record, ie. excavation, analysis and dissemination of results).

3 METHODOLOGY

- 3.1 The evaluation was undertaken by a 13 tonne tracked excavator utilising a bladed ditching bucket. Excavation was undertaken in shallow units/spits until the first significant archaeological horizon. All machine excavation was supervised by an experienced field archaeologist and according to AOC Archaeology Group's standard operating procedures, and as per the methodology within the *Written Scheme of Investigation* (Connolly 2015).

4 RESULTS

- 4.1 The archaeological evaluation was undertaken on the 18th to 22nd January 2016. Weather conditions were fair allowing for good archaeological visibility throughout the works. In total, 1435 m² of linear trench was excavated with the total being reduced from the original requirement due to large areas of the site containing mature trees, and the presence of a previously unknown sewer and a live electric and BT cable (Figure 2).
- 4.2 The soil make-up throughout the development area varied across the site. Trenches 1-3, and 17-19 consisted of 0.35 m of dark brown clay loam topsoil overlying the underlying orangey brown or grey clay subsoil (Plate 1). However, the other trenches all encountered various depths of made ground, mainly consisting of a dark grey silty clay with frequent plastic, glass, brick and timbers, along with occasional modern brick and breeze block as well as a few hand made bricks and 19th and 20th century white ceramics. In Trenches 4-8, 12, 13, 15 and 16 the made ground measured between 0.3 m and 1.5 m, and directly overlay the clay subsoil (Plate 2), but Trench 14 consisted of made ground overlying the previous topsoil. Finally, Trenches 9-11 were found to have been located over the line of a probable sewer (not recorded in the available services data) with up to 2.05 m of made ground encountered.
- 4.3 No archaeological features or artefacts were revealed within any of the trenches, with most of the areas having been disturbed by the hospital construction works and associated services and landscaping.



Plate 1 - Post excavation view of Trench 17



Plate 2 - Post excavation view of Trench 4

5 CONCLUSION AND RECOMMENDATIONS

- 5.1 From the results of the trenches excavated it can be concluded that the area is now archaeologically sterile. The construction of the hospital to the N of the site has had a negative impact on the landscaped areas to the W and S. Furthermore, where previous soil horizons exist there was no evidence of any archaeological features or artefacts.

- 5.2 No further archaeological works are deemed necessary within the development area. This recommendation will require the approval of WoSAS acting on behalf of Renfrewshire Council.

6 REFERENCES

Connolly, R. 2015 *Archaeological Written Scheme of Investigation: Land off Barrochan Road (former Merchiston Hospital Site) Brookfield, Renfrewshire* Unpublished CGMS Consulting Ltd. project design

Scottish Government 2014 *Scottish Planning Policy*, 2014

Scottish Government 2011 *Planning And Archaeology 2/2011*

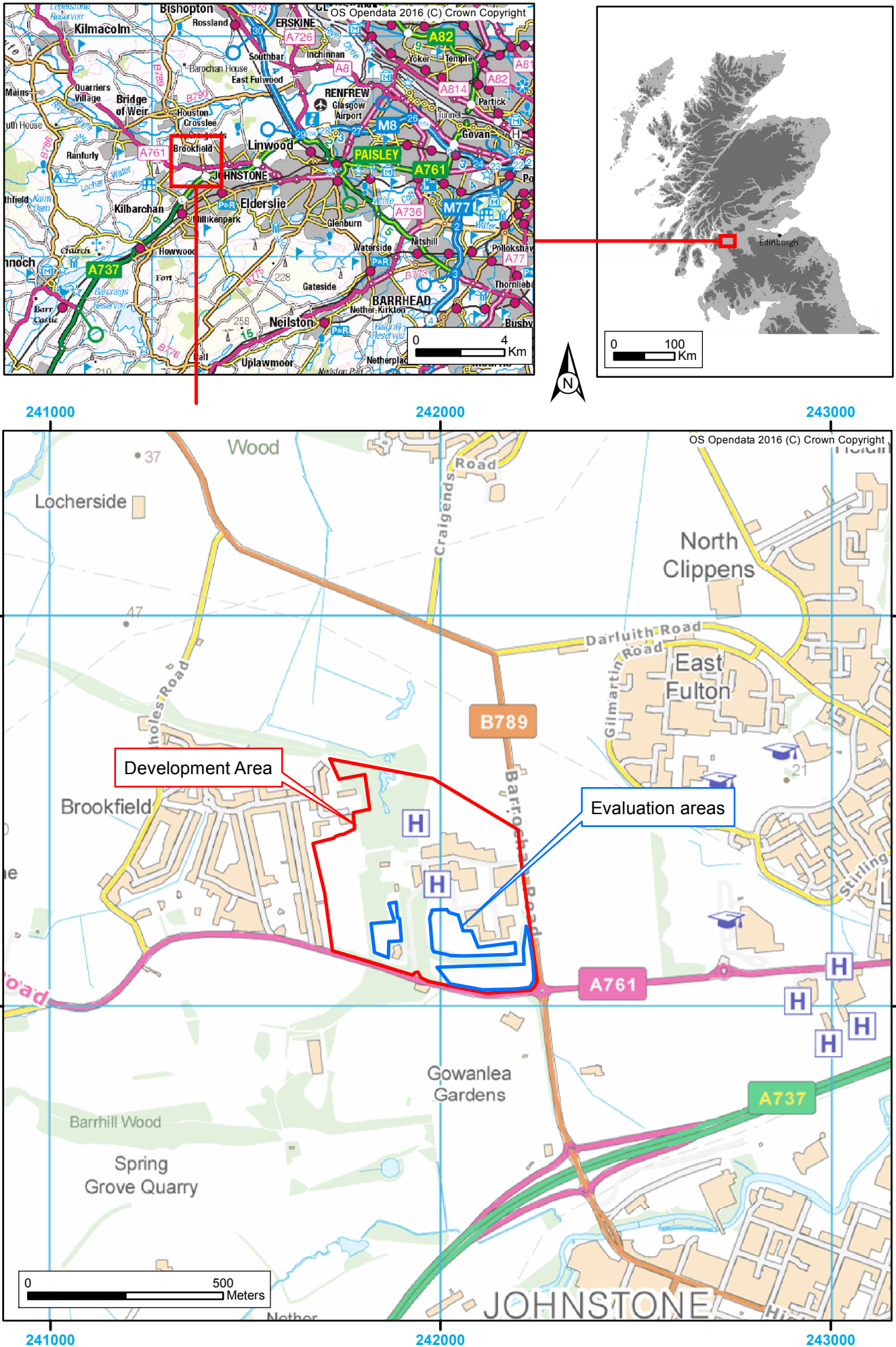


Figure 1: Site Location Plan

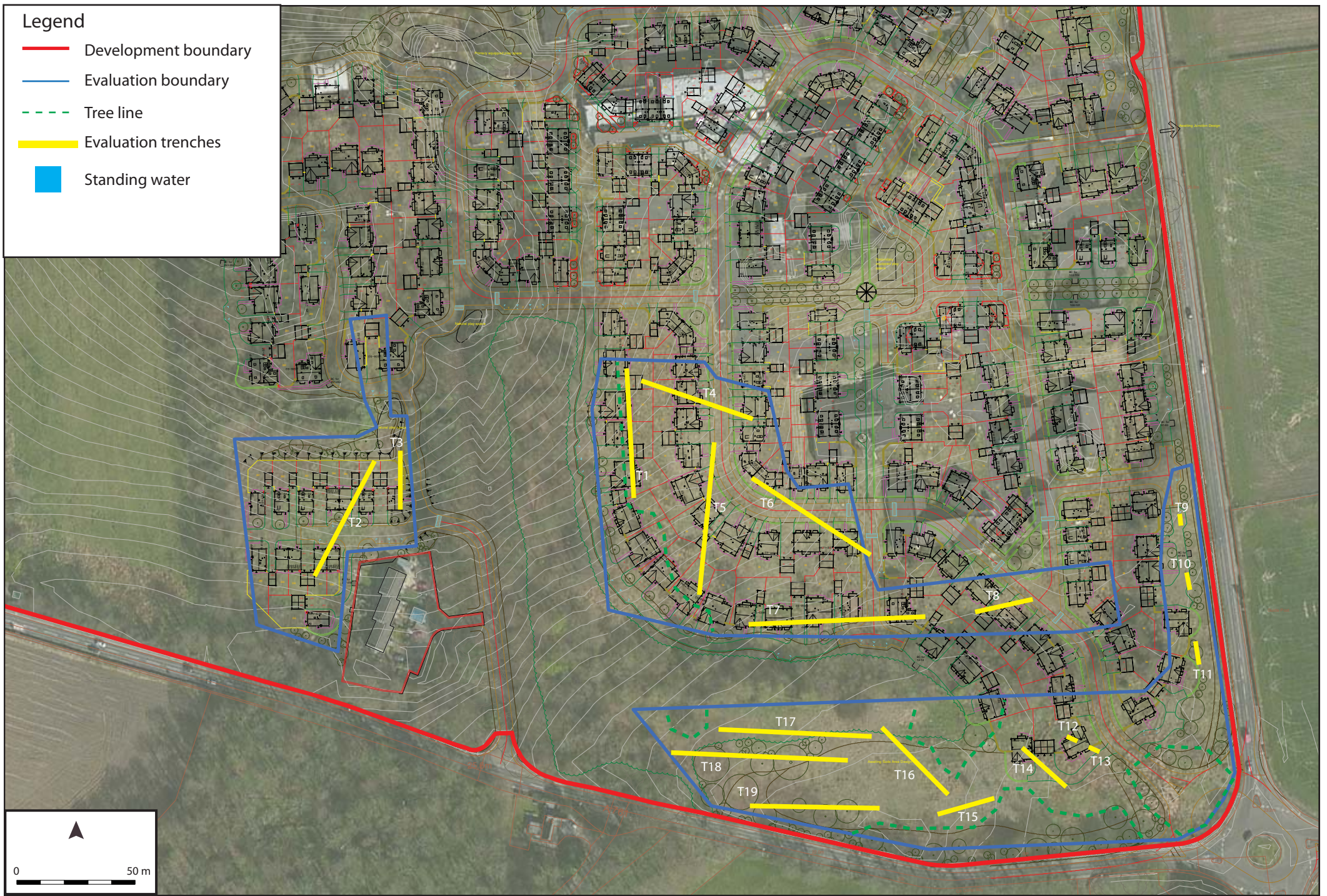


Figure 2 - Evaluation trench locations

**Merchiston House, Brookfield,
Renfrewshire:
Archaeological Evaluation
Data Structure Report**

Section 2: Appendices

APPENDIX 1: Trench Descriptions

Trench 1

<i>Dimensions</i>	55 m by 2 m
<i>Total Area</i>	110 m ²
<i>Excavated Orientation</i>	S to N
<i>Soil Make-up</i>	Topsoil – dark brown clay loam with frequent stone, coal flecks and occasional white ceramics – max depth 0.34 m
<i>Significant Features</i>	None
<i>Other Features</i>	None
<i>Natural Subsoil</i>	Orangey brown clay
<i>Finds</i>	None

Trench 2

<i>Dimensions</i>	50 m by 2 m
<i>Total Area</i>	100 m ²
<i>Excavated Orientation</i>	NE to SW
<i>Soil Make-up</i>	Topsoil – dark brown clay loam with frequent stone, coal flecks and occasional white ceramics – max depth 0.36 m
<i>Significant Features</i>	None
<i>Other Features</i>	Field drain at 2 m aligned NW-SE; Modern service track at 43 m aligned NE-SW
<i>Natural Subsoil</i>	Orangey brown clay
<i>Finds</i>	None

Trench 3

<i>Dimensions</i>	25 m by 2 m
<i>Total Area</i>	50 m ²
<i>Excavated Orientation</i>	N to S
<i>Soil Make-up</i>	Topsoil – dark brown clay loam with frequent stone, coal flecks and occasional white ceramics – max depth 0.31 m
<i>Significant Features</i>	None
<i>Other Features</i>	None
<i>Natural Subsoil</i>	Orangey brown clay
<i>Finds</i>	None

Trench 4

<i>Dimensions</i>	50 m by 2 m
<i>Total Area</i>	100 m ²
<i>Excavated Orientation</i>	NW to SE
<i>Soil Make-up</i>	Topsoil (0 m to 13 m) – dark brown clay loam with frequent stone, coal flecks and occasional white ceramics – max depth 0.26 m; Made Ground (13 m to 50 m) – dark grey silty clay with frequent plastic, glass, brick and timbers, along with occasional modern brick and breeze block as well as a few hand-made bricks and 19 th and 20 th century white ceramics – max. depth 1.2 m.
<i>Significant Features</i>	None
<i>Other Features</i>	Ceramic tile drain at 5 m aligned NE-SW
<i>Natural Subsoil</i>	Orangey brown clay - disturbed
<i>Finds</i>	None

Trench 5

<i>Dimensions</i>	65 m by 2 m
<i>Total Area</i>	130 m ²
<i>Excavated Orientation</i>	NNE to SSW

<i>Soil Make-up</i>	Made Ground (0 m to 32 m) – dark grey silty clay with frequent plastic, glass, brick and timbers, along with occasional modern brick and breeze block as well as a few hand-made bricks and 19 th and 20 th century white ceramics – max depth 1.2 m; Topsoil (32 m to 65 m) – dark brown clay loam with frequent stone, coal flecks and occasional white ceramics – max depth 0.34 m.
<i>Significant Features</i>	None
<i>Other Features</i>	Modern sewer manhole at 65 m to immediate E of trench
<i>Natural Subsoil</i>	Orangey brown clay - disturbed
<i>Finds</i>	None

Trench 6

<i>Dimensions</i>	60 m by 2 m
<i>Total Area</i>	120 m ²
<i>Excavated Orientation</i>	SE to NW
<i>Soil Make-up</i>	Made Ground and Topsoil mix (0 m to 35 m) – dark greyish brown silty clay with frequent plastic, glass, brick and timbers, along with occasional modern brick and breeze block as well as a few hand-made bricks and 19 th and 20 th century white ceramics – max depth 0.34 m; Made Ground (35 m to 60 m) - dark grey silty clay with frequent plastic, glass, brick and timbers, along with occasional modern brick and breeze block as well as a few hand-made bricks and 19 th and 20 th century white ceramics – max. depth 0.75 m; Topsoil (35 m to 60 m) – dark brown clay loam with frequent stone, coal flecks and occasional white ceramics – max depth 0.35 m.
<i>Significant Features</i>	None
<i>Other Features</i>	None
<i>Natural Subsoil</i>	Orangey brown clay – disturbed from 0 m to 35 m
<i>Finds</i>	None

Trench 7

<i>Dimensions</i>	75 m by 2 m
<i>Total Area</i>	150 m ²
<i>Excavated Orientation</i>	W to E
<i>Soil Make-up</i>	Topsoil and Made Ground mix – dark greyish brown silty clay with frequent plastic, glass, brick and timbers, along with occasional modern brick and breeze block as well as a few hand-made bricks and 19 th and 20 th century white ceramics – max depth 0.55 m;
<i>Significant Features</i>	None
<i>Other Features</i>	None
<i>Natural Subsoil</i>	Orangey brown clay
<i>Finds</i>	None

Trench 8

<i>Dimensions</i>	25 m by 2 m
<i>Total Area</i>	50 m ²
<i>Excavated Orientation</i>	W to E
<i>Soil Make-up</i>	Made Ground - dark grey silty clay with frequent plastic, glass, brick and timbers, along with occasional modern brick and breeze block as well as a few hand-made bricks and 19 th and 20 th century white ceramics – max. depth 1.5 m;
<i>Significant Features</i>	None
<i>Other Features</i>	Cast iron pipe at 13.3 m at depth of 1.4 m aligned N-S
<i>Natural Subsoil</i>	Grey clay
<i>Finds</i>	None

Trench 9

<i>Dimensions</i>	5 m by 2 m
<i>Total Area</i>	10 m ²
<i>Excavated Orientation</i>	N to S
<i>Soil Make-up</i>	Made Ground - dark grey silty clay with frequent plastic, glass, brick and timbers, along with occasional modern brick and breeze block as well as a few hand-made bricks and 19 th and 20 th century white ceramics – max. depth 2 m;
<i>Significant Features</i>	None
<i>Other Features</i>	Ceramic tile drain at 1.5 m at depth of 2 m aligned E-W
<i>Natural Subsoil</i>	Grey clay
<i>Finds</i>	None

Trench 10

<i>Dimensions</i>	7.5 m by 2 m
<i>Total Area</i>	15 m ²
<i>Excavated Orientation</i>	N to S
<i>Soil Make-up</i>	Made Ground - dark grey silty clay with frequent plastic, glass, brick and timbers, along with occasional modern brick and breeze block as well as a few hand-made bricks and 19 th and 20 th century white ceramics – max. depth 1.5 m;
<i>Significant Features</i>	None
<i>Other Features</i>	Possible brick manhole at 0 m to 1.3 m
<i>Natural Subsoil</i>	Grey clay
<i>Finds</i>	None

Trench 11

<i>Dimensions</i>	10 m by 2 m
<i>Total Area</i>	20 m ²
<i>Excavated Orientation</i>	N to S
<i>Soil Make-up</i>	Made Ground - dark grey silty clay with frequent plastic, glass, brick and timbers, along with occasional modern brick and breeze block as well as a few hand-made bricks and 19 th and 20 th century white ceramics – max. depth 1.3 m;
<i>Significant Features</i>	None
<i>Other Features</i>	Modern cut (probable sewer) aligned N-S
<i>Natural Subsoil</i>	Grey clay
<i>Finds</i>	None

Trench 12

<i>Dimensions</i>	5 m by 2 m
<i>Total Area</i>	10 m ²
<i>Excavated Orientation</i>	NW to SE
<i>Soil Make-up</i>	Made Ground - dark grey silty clay with frequent plastic, glass, brick and timbers, along with occasional modern brick and breeze block as well as a few hand-made bricks and 19 th and 20 th century white ceramics – max. depth 1.7 m;
<i>Significant Features</i>	None
<i>Other Features</i>	None
<i>Natural Subsoil</i>	Grey clay
<i>Finds</i>	None

Trench 13

<i>Dimensions</i>	5 m by 2 m
<i>Total Area</i>	10 m ²
<i>Excavated Orientation</i>	SE to NW

<i>Soil Make-up</i>	Made Ground - dark grey silty clay with frequent plastic, glass, brick and timbers, along with occasional modern brick and breeze block as well as a few hand-made bricks and 19 th and 20 th century white ceramics – max. depth 1.1 m;
<i>Significant Features</i>	None
<i>Other Features</i>	None
<i>Natural Subsoil</i>	Orangey grey clay
<i>Finds</i>	None

Trench 14

<i>Dimensions</i>	25 m by 2 m
<i>Total Area</i>	50 m ²
<i>Excavated Orientation</i>	SE to NW
<i>Soil Make-up</i>	Made Ground - dark grey silty clay with frequent plastic, glass, brick and timbers, along with occasional modern brick and breeze block as well as a few hand-made bricks and 19 th and 20 th century white ceramics – max. depth 1 m; Topsoil – thin layer of black humic soil overlying dark brown clay loam with frequent stone, coal flecks and occasional white ceramics – max depth 0.3 m.
<i>Significant Features</i>	None
<i>Other Features</i>	Ceramic tile drain at 8 m aligned E-W; Modern cut at 20 m aligned E-W
<i>Natural Subsoil</i>	Orangey brown clay
<i>Finds</i>	None

Trench 15

<i>Dimensions</i>	25 m by 2 m
<i>Total Area</i>	50 m ²
<i>Excavated Orientation</i>	E to W
<i>Soil Make-up</i>	Made Ground - dark grey silty clay with frequent plastic, glass, brick and timbers, along with occasional modern brick and breeze block as well as a few hand-made bricks and 19 th and 20 th century white ceramics – max. depth 0.3 m; Topsoil – dark brown clay loam with frequent stone, coal flecks and occasional white ceramics – max depth 0.4 m.
<i>Significant Features</i>	None
<i>Other Features</i>	Modern drain with type 1 fill at 25 m aligned E-W
<i>Natural Subsoil</i>	Orangey brown clay
<i>Finds</i>	None

Trench 16

<i>Dimensions</i>	40 m by 2 m
<i>Total Area</i>	80 m ²
<i>Excavated Orientation</i>	SE to NW
<i>Soil Make-up</i>	Topsoil and Made Ground mix – dark greyish brown silty clay with frequent plastic, glass, brick and timbers, along with occasional modern brick and breeze block as well as a few hand-made bricks and 19 th and 20 th century white ceramics – max depth 0.7 m;
<i>Significant Features</i>	None
<i>Other Features</i>	Modern drain with type 1 fill at 2.3 m aligned N-S
<i>Natural Subsoil</i>	Orangey brown clay to 20 m then grey clay
<i>Finds</i>	None

Trench 17

<i>Dimensions</i>	65 m by 2 m
<i>Total Area</i>	130 m ²

<i>Excavated Orientation</i>	E to W
<i>Soil Make-up</i>	Topsoil and Made Ground mix (0 m to 22 m) – dark greyish brown silty clay with frequent plastic, glass, brick and timbers, along with occasional modern brick and breeze block as well as a few hand-made bricks and 19 th and 20 th century white ceramics – max depth 0.55 m Topsoil (22 m to 65 m) – dark brown clay loam with frequent stone, coal flecks and occasional white ceramics – max depth 0.3 m
<i>Significant Features</i>	None
<i>Other Features</i>	Modern drain with type 1 fill at 7.1 m aligned N-S; Modern drain with type 1 fill at 14.6 m aligned NNW-SSE; Modern drain with type 1 fill at 16 m aligned NW-SE.
<i>Natural Subsoil</i>	Orangey brown clay
<i>Finds</i>	None

Trench 18

<i>Dimensions</i>	75 m by 2 m
<i>Total Area</i>	150 m ²
<i>Excavated Orientation</i>	W to E
<i>Soil Make-up</i>	Topsoil – dark brown clay loam with frequent stone, coal flecks and occasional white ceramics – max depth 0.34 m
<i>Significant Features</i>	None
<i>Other Features</i>	Modern drain with type 1 fill at 66 m aligned NW-SE
<i>Natural Subsoil</i>	Orangey brown clay
<i>Finds</i>	None

Trench 19

<i>Dimensions</i>	55 m by 2 m
<i>Total Area</i>	110 m ²
<i>Excavated Orientation</i>	E to W
<i>Soil Make-up</i>	Topsoil and Made Ground mix (0 m to 11 m) – dark greyish brown silty clay with frequent plastic, glass, brick and timbers, along with occasional modern brick and breeze block as well as a few hand-made bricks and 19 th and 20 th century white ceramics – max depth 0.45 m Topsoil (11 m to 55 m) – dark brown clay loam with frequent stone, coal flecks and occasional white ceramics – max depth 0.34 m
<i>Significant Features</i>	None
<i>Other Features</i>	Modern drain with type 1 fill at 0 m aligned SE-NW; Modern drain with type 1 fill at 5 m aligned NW-SE
<i>Natural Subsoil</i>	Grey clay until 18 m then orangey brown clay
<i>Finds</i>	None

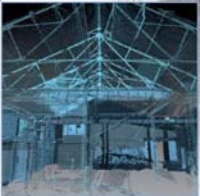
APPENDIX 2: Photographic Register

Digital Photographs

Frame	Description	From	Date
1-5	View of Area A – N	Var	18/1/16
6	Modern disturbance in T1	S	18/1/16
7	Post-ex view of T1	N	18/1/16
8-11	Views of Area B	Var	18/1/16
12	Post-ex view of T2	SW	18/1/16
13	Post-ex view of T3	S	18/1/16
14	Post-ex view of T4	SE	18/1/16
15	Depth of made ground in T5	W	18/1/16
16	Post-ex view of T5	SSW	18/1/16
17	Post-ex view of T6	NW	19/1/16
18-20	Views of manhole at end of T5	Var	19/1/16
21	Post-ex view of T7	E	19/1/16
22	Post-ex view of T8	ENE	19/1/16
23	Post-ex view of T9 – 2 m deep	NW	19/1/16
24	Possible modern structure/manhole in T10	NE	19/1/16
25	Post-ex view of T10	NW	19/1/16
26	Post-ex view of T11	N	19/1/16
27	Modern cut (sewer) in T11	N	19/1/16
28	Post-ex view of T12	NW	19/1/16
29	SW-facing section of T12	S	19/1/16
30-31	View to E end	W	19/1/16
32-33	View to W end	E	19/1/16
34-38	Trees to S of tree line	Var	19/1/16
39	Post-ex view of T13	SE	19/1/16
40-41	Area of standing water in SE corner	W	19/1/16
42	Post-ex view of T14	NW	19/1/16
43	Modern cut in T14	W	19/1/16
44	Modern disturbance in T15	E	20/1/16
45	Modern drain in T15	NE	20/1/16
46	Post-ex view of T15	W	20/1/16
47	Post-ex view of T16	NW	20/1/16
48	Post-ex view of T17	W	20/1/16
49	Post-ex view of T18	E	20/1/16
50	Post-ex view of T19	W	20/1/16
51-52	View of Area B trenches backfilled	N	21/1/16
53-58	View of Area A trenches backfilled	Var	21/1/16
59-60	View of Area A trenches backfilled	Var	21/1/16

APPENDIX 3: 'Discovery and Excavation in Scotland' Report

LOCAL AUTHORITY:	Renfrewshire Council
PROJECT TITLE/SITE NAME	Merchiston House, Brookfield, Renfrewshire
PROJECT CODE:	AOC 23326
PARISH:	Houston and Killellan
NAME OF CONTRIBUTOR:	Kevin Paton
NAME OF ORGANISATION:	AOC Archaeology Group
TYPE(S) OF PROJECT:	Archaeological Evaluation
NMRS NO(S)	N/A
SITE/MONUMENT TYPE(S):	N/A
SIGNIFICANT FINDS:	N/A
NGR (2 letters, 6 figures)	NS 42075 64320
START DATE (this season)	18 th January 2016
END DATE (this season)	22 nd January 2016
PREVIOUS WORK (incl. DES ref.)	None
MAIN (NARRATIVE) DESCRIPTION: (May include information from other fields)	<p>An archaeological evaluation was undertaken by AOC Archaeology in relation to a residential development on the grounds of the former Merchiston House, Brookfield, Renfrewshire.</p> <p>The evaluation required an 8% trenching sample of the previously undeveloped ground to the S and W of the former Merchiston Hospital buildings and associated infrastructure. The evaluation trenches demonstrated that the majority of the site has been disturbed by the previous hospital construction with up to 2 m of made ground overlying the underlying clays in some areas. In the SW corner of the site there were signs of undisturbed former soil horizons being present, but no archaeological features or artefacts were encountered.</p> <p>The evaluation has demonstrated that the area is archaeologically sterile and no further archaeological works are required. This recommendation will require the approval of the West of Scotland Archaeology Service (WoSAS).</p>
PROPOSED FUTURE WORK:	None
CAPTION(S) FOR ILLUSTRS:	---
SPONSOR OR FUNDING BODY:	CGMS Consulting Ltd.
ADDRESS OF MAIN CONTRIBUTOR:	Edgefield Road Industrial Estate, Loanhead, Midlothian, EH20 9SY
EMAIL ADDRESS:	admin@aocarchaeology.com
ARCHIVE LOCATION (intended/deposited)	Archive to be deposited in NMRS



AOC Archaeology Group, Edgefield Industrial Estate, Edgefield Road, Loanhead EH20 9SY
tel: 0131 440 3593 | fax: 0131 440 3422 | e-mail: admin@aocarchaeology.com

www.aocarchaeology.com