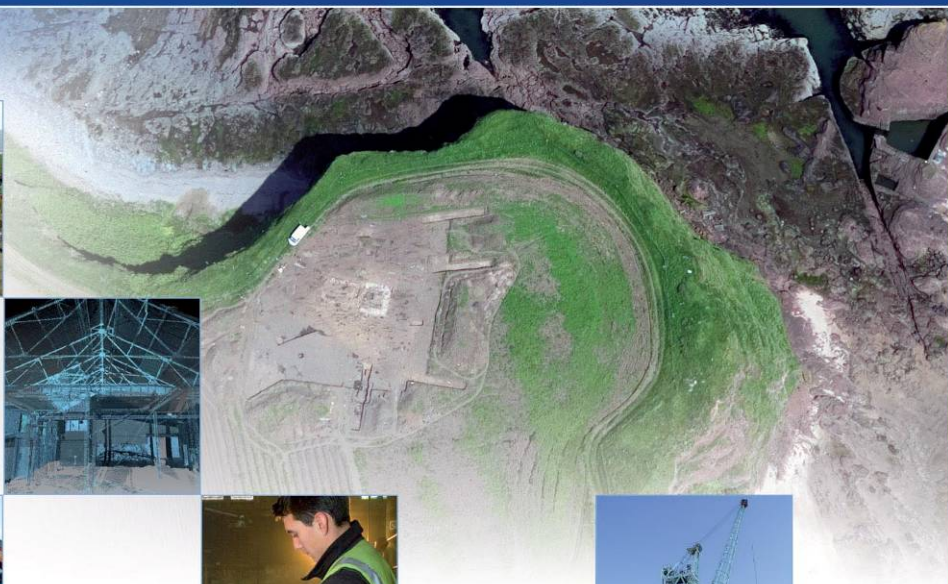


The Macallan Distillery, Craigellachie, Moray: Archaeological Evaluation Data Structure Report

AOC 22624
6th February 2014



The Macallan Distillery, Craigellachie, Moray: Archaeological Evaluation Data Structure Report

On Behalf of: The Macallan Distillery Company Limited
Easter Elchies House
Craigellachie
Aberlour
AB38 9RX

National Grid Reference (NGR): NJ 27800 44700

AOC Project No: 22624

Prepared by: Lindsay Dunbar & Nick Johnstone

Illustration by: Jamie Humble

Date of Fieldwork: 27th – 30th January 2014

Date of Report: 6th February 2014

This document has been prepared in accordance with AOC standard operating procedures.

Author: Lindsay Dunbar & Nick Johnstone

Date: 6th February 2014

Approved by: Martin Cook

Date: 6th February 2014

Draft/Final Report Stage:

Date: 7th February 2014

Enquiries to: AOC Archaeology Group
Edgefield Industrial Estate
Edgefield Road
Loanhead
EH20 9SY

Tel. 0131 440 3593
Fax. 0131 440 3422
e-mail. edinburgh@aocarchaeology.com



Contents

	Page
List of Illustrations	2
List of Plates.....	2
List of Appendices.....	2
1 INTRODUCTION	4
1.1 Background	4
1.2 Site Location	4
2 HISTORICAL BACKGROUND (taken from AOC2014a DBA)	4
3 OBJECTIVES	5
4 METHODOLOGY	5
4.1 Archaeological Evaluation	5
5 RESULTS.....	6
5.1 Introduction	6
5.2 Archaeological Evaluation	6
6 CONCLUSIONS AND RECOMMENDATIONS.....	8
7 REFERENCES	9
7.1 Bibliographic References	9
APPENDIX 1: EVALUATION TRENCH DESCRIPTIONS.....	11
APPENDIX 2: CONTEXT REGISTER.....	17
APPENDIX 3: PHOTOGRAPHIC REGISTER.....	19
APPENDIX 4: DRAWING REGISTER	21
APPENDIX 5: FINDS REGISTER	21
APPENDIX 6: SAMPLE REGISTER	21
APPENDIX 7: <i>'DISCOVERY AND EXCAVATION IN SCOTLAND'</i> REPORT	22

List of Illustrations

Figure 1: Site Location Plan

Figure 2: Trench Location Plan

List of Plates

Plate 1: General view of Trench 8 showing some of existing woodland areas

Plate 2: General view of pit feature [801], Trench 8

Plate 3: E-facing section of posthole [1501], Trench 15

Plate 4: View of possible ringditch [1307] and posthole [1309], Trench 13

Plate 5: View of large pits [1701] and [1703], Trench 17

List of Appendices

Appendix 1: Evaluation Trench Descriptions

Appendix 2: Context Register

Appendix 3: Photographic Register

Appendix 4: Drawing Register

Appendix 5: Finds Register

Appendix 6: Samples Register

Appendix 7: *'Discovery and Excavation in Scotland'* Report

ABSTRACT

AOC Archaeology Group undertook an archaeological evaluation on behalf of The Macallan Distillery Company Limited during the development of a new distillery and visitor centre on land adjacent to the existing distillery.

A total of 32 evaluation trenches totalling an area of 5026 m² were excavated within the development area. Of the c.7.5 ha site a total of c.2.5 ha was unavailable to trench due to presence of mature woodland, live services, existing infrastructure such as roads and carparks. Of the land available for evaluation the trenching totalled just over 10 %.

The evaluation revealed a stratigraphic sequence of sandy topsoil overlying natural deposits of sand gravel and clay. Numerous small archaeological cut features were identified of which variously sized pits were most prominent alongside some smaller postholes and a possible ringditch roundhouse. These features where investigated revealed only charcoal with no artefacts recovered which could date the activity on site. From the topsoil a single struck lithic was found.

1 INTRODUCTION

1.1 Background

- 1.1.1 An archaeological evaluation was required by The Macallan Distillery Company Ltd with regard to the proposed development of a new distillery building and visitor centre at the Macallan Distillery, Craigellachie, Moray. The proposed development lies within the administrative area of Moray Council, which is advised on archaeological matters by Aberdeenshire Council Archaeology Service (ACAS). A programme of archaeological works is required in keeping with the policies outlined in *Scottish Planning Policy* (Scottish Government 2010) and PAN 2/2011 (Scottish Government 2011) in order to record the extent and significance of any archaeological remains which may be present within the development area.
- 1.1.2 The development area is centred at c. NGR NJ 278 447 and comprises a total area of approximately 7.5 ha.

1.2 Site Location

- 1.2.1 The proposed development is located to the west of the River Spey, east of Craigellachie and north of Charlestown of Aberlour. It is bounded to the north by the B9102, to the south and west by existing buildings of the Macallan Distillery and to the east by fields. The proposed development area is largely covered by fields and woodland, relic elements of the parkland associated with Easter Elchies House, a post-medieval laird's house that has been largely rebuilt around 1985. The present building forms part of the Macallan Distillery, and there are further buildings associated with Macallan Farm and Ghillies Cottage in the south of the proposed development area, as well as a lodge and kennels in the north.

2 HISTORICAL BACKGROUND (taken from AOC2014a DBA)

- 2.2.1 Cultural heritage remains identified within the proposed development area include the Category B Listed Easter Elchies House (Site 6 in DBA gazeteer), as well as a number of structures in the grounds of the house visible on late 19th and early 20th century mapping and on 20th century aerial photographs. Most significantly, mapping of the 18th century indicates the possible site of a former location of the house (Site 78) and of stables, offices, and a yard associated with the house (Site 79), both of which are likely to have been disturbed at least in part by later buildings. The maps also show the designed landscape of the Easter Elchies estate within which these buildings were set. While the Category B Listed house is judged to be of Regional Cultural Heritage Value, the other heritage assets are judged to be of Local Cultural Heritage Value, as they form part of the Easter Elchies estate, though commonly either of relatively late date, e.g. Ghillies Cottage (Site 72) and/or likely to have relatively limited potential for surviving remains.
- 2.2.2 The presence of prehistoric and later remains in the area surrounding the proposed development, in particular remains of post-medieval date including those of the former Macallan parish church (Site 1) to the south of the site boundary, indicate the potential for the survival of hitherto unknown remains within the proposed development. Some recent disturbance has occurred in areas of the proposed development site, including 20th century construction around Macallan Farm (Site 20), which may limit the potential for survival of subsurface remains associated with the post-medieval Easter Elchies House (Sites 6 & 78). However, relatively little of the proposed development area has been impacted in this way, and elements of the parkland that surrounded the house are still discernible, such as the woodland in the north of the proposed development area.

3 OBJECTIVES

- 3.1 The objectives of the archaeological evaluation was to determine and assess the character, extent, condition, quality, date and significance of any buried archaeological remains within the proposed development area through evaluation trenching. Should significant archaeological remains be encountered that cannot be preserved *in situ* an appropriate form of archaeological mitigation, such as excavation, post-excavation analyses and publication will be advised.



Plate 1: General view of Trench 8 showing some of existing woodland areas

4 METHODOLOGY

4.1 Archaeological Evaluation

- 4.1.1 A total of 32 evaluation trenches totalling an area of 5026 m² were excavated within the development area. Of the c.7.5 ha site a total of c.2.5 ha was unavailable to trench due to presence of mature woodland, live services and existing infrastructure such as roads and carparks. Of the land available for evaluation the trenching totalled just over 10 %.
- 4.1.2 The trial trenching was aimed to establish the extent, condition, character, quality and date of any archaeological features present. Trenches were excavated by machine down to the first significant archaeological horizon or to natural subsoil. Where areas of significant archaeological deposits were discovered trenches were extended to better establish the extent of the archaeological material.
- 4.1.3 The evaluation phase consisted of 32 trenches being excavated by a tracked 360 excavator equipped with a 2.0 m wide flat bladed ditching bucket operating under the constant supervision of an experienced field archaeologist. Each trench was recorded using AOC *pro forma* trench record sheets and any potential features investigated further to assess their character and date.
- 4.1.4 The trenches were placed to ensure comprehensive coverage of the development area and to investigate areas of potential better survival of archaeological deposits.

5 RESULTS

5.1 Introduction

5.1.1 All archaeological works were conducted between the 27th and 31st of January 2014.

5.1.2 The various data gathered from the evaluation and excavations are presented as a series of appendices:

Appendix 1: Evaluation Trench Descriptions;
Appendix 2: Context Register;
Appendix 3: Photographic Register;
Appendix 4: Drawing Register;
Appendix 5: Finds Register;
Appendix 6: Samples Register;
Appendix 7: reproduces the 'Discovery and Excavation in Scotland' entry



Plate 2: General view of pit feature [801], Trench 8

5.2 Archaeological Evaluation

5.2.1 The evaluation comprised of 32 trenches set on a variety of alignments and positioned to examine the most favourable aspects. A total area of 5026 m² representing a little more than the 10% sample required of the area available for archaeological evaluation was investigated. The evaluation revealed a varying deposit of topsoil of dark brown coarse sandy gravel and stones. The topsoil overlay a natural deposit of dark orange sand and gravel with patches of light coloured sandy clay. A significant amount of modern interference was discovered on site in the form of ceramic field drains, shallow pits and large drainage features filled with rubble associated with land improvement and the relatively recent development to the west of the evaluation area.

5.2.2 During the evaluation over twenty cut features thought to be archaeological in nature were discovered throughout the evaluated area. The majority of these features comprised of small to medium circular or oval pits and postholes such as [101], [301], [401], [403], [801], [901], [903], [1201], [1301], [1303], [1305], [1309], [1501], [1503], [1505], [1701], [1703], [2001], [2301] and

[2303]. No dateable artefacts were recovered from any of these features but distinct charcoal rich fill deposits were identified in several of the features excavated.



Plate 3: E-facing section of posthole [1501], Trench 15

5.2.3 Clusters of features possibly indicative of structures were also discovered to the south of the site in Trenches 13 and 15. In Trench 13 a post hole [1309] and curvilinear ditch [1307] may represent the remains of a later prehistoric ring ditch roundhouse (Plate 4). In Trench 15 an arc of three well defined postholes, may indicate the remains of postring roundhouse (Plate 3).



Plate 4: View of possible ringditch [1307] and posthole [1309], Trench 13

- 5.2.4 Whilst the features that were investigated through excavation proved to be well defined and in some cases deep (Pit [903] was over 0.5 m deep) unfortunately no dateable artefacts were recovered from any features. Most of the features contained charcoal pieces and flecks so dating material is present however some in suit artefacts would have provided a clearer understanding of the age the features encountered by the evaluation trenching.



Plate 5: View of large pits [1701] and [1703], Trench 17

- 5.2.5 It maybe of note that even the field was ploughed careful examination of the topsoil and light field-walking of the ploughed field uncovered only a solitary lithic. This small piece of Buchan red flint was a fragment of a retouched scraper (*pers com* R. Engl). Very little material was present in the field of any date with only very rare findings of sherds of modern pottery, stoneware and bottle glass noted.

6 CONCLUSIONS AND RECOMMENDATIONS

- 6.1 The area of the development site suitable for evaluation, ie that area not under mature trees, infrastructure or within service buffers has yielded a spread of archaeological features. Excavation has shown that these features are significant archaeology and survive relatively well with depths of up to 0.5 m. The features have unfortunately as yet not yielded any finds however they contain charcoal, and in some cases heat affected stone and as such fit with the types of features found at prehistoric sites. The lack of lithics recovered from the ploughed field perhaps point to Later Prehistoric, Iron Age activity. The identification of a possible ring ditch roundhouse in Trench 13 would seem to reinforce the idea that the development area contains the remains of later prehistoric settlement activity.
- 6.2 These features are concentrated in the main on the flatter ground and initial eastern slopes in an area some 200 m north-south by 75 m east-west as shown on Figure 2. The features and structures identified during the evaluation phase of works are currently under no immediate risk of damage; the

area being used as a ploughed field. However given future the development proposals two options remain open as per the guidelines set out in SPP (SPP 2010) and PAN 2010. Either the structures are preserved *in situ*, and remain unexcavated, possibly under an area of parkland or garden or they need to be *preserved by record* – that is to say fully excavated and subsequently subjected to post-excavation analyses/publication.

- 6.3 It is proposed that the preferred option of our client would be to deal with any archaeological mitigation ahead of any on site development works to prevent any unnecessary on site delays. With that in mind we would propose the machine topsoil stripping of an area, as described above, 200 m north-south by 75 m east-west as shown on Figure 2 followed by the hand excavation of any exposed features as per an ACAS approved Excavation Written Scheme of Investigation.
- 6.4 This proposal will require confirmation by Moray Council as advised by ACAS.

7 REFERENCES

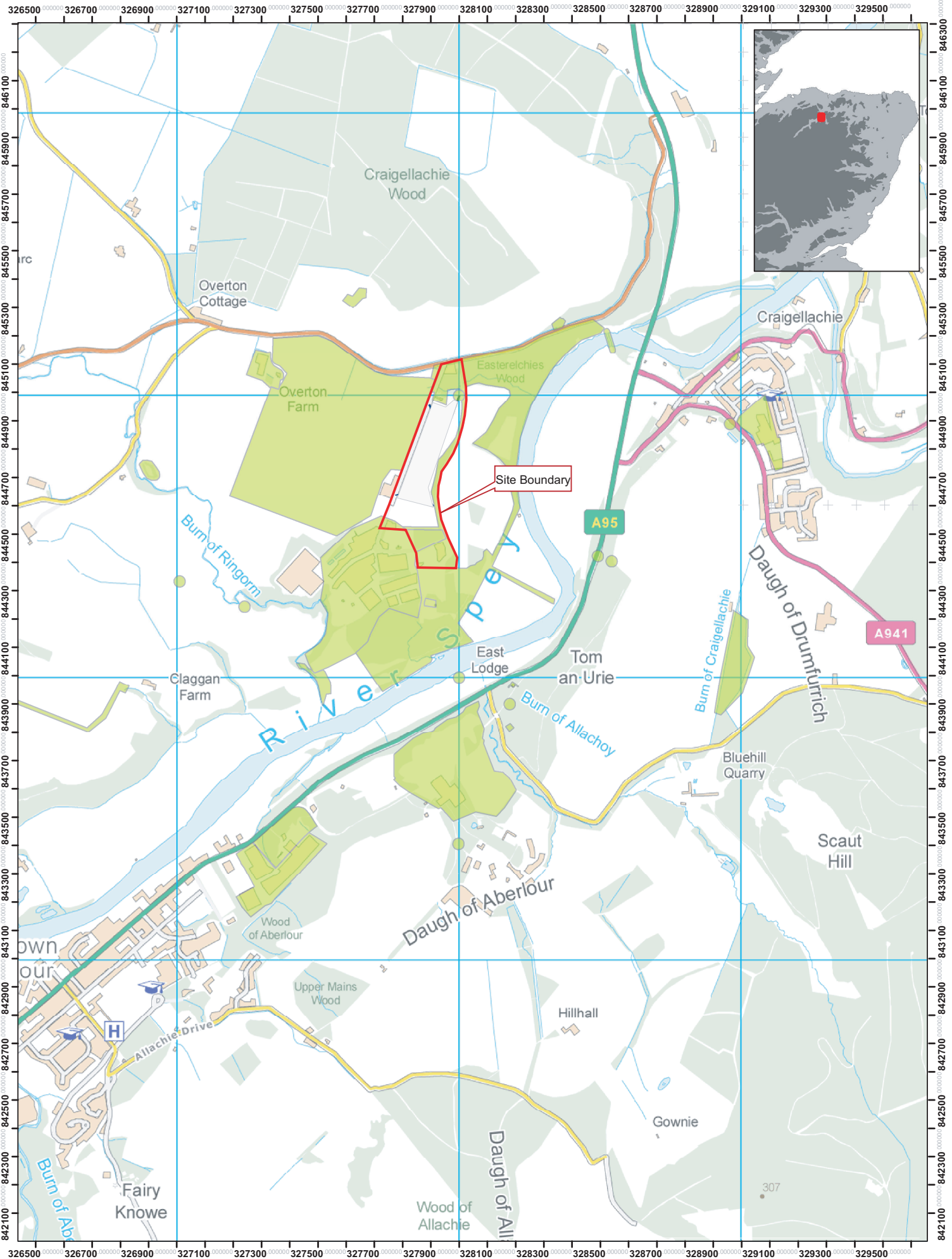
7.1 Bibliographic References

AOC Archaeology 2014 *The Macallan Distillery, Craigellachie, Moray Aberdeen Archaeological Desk based Assessment*. Unpublished AOC Project Design

AOC Archaeology 2014 *The Macallan Distillery, Craigellachie, Moray Aberdeen Archaeological Evaluation: Written Scheme of Investigation*. Unpublished AOC Project Design

Scottish Government 2010 Scottish Planning Policy.

Scottish Government 2010 PAN 2/2011 Planning & Archaeology.



0 75 150 300 450 600 Meters

Figure 1: Site Location Plan



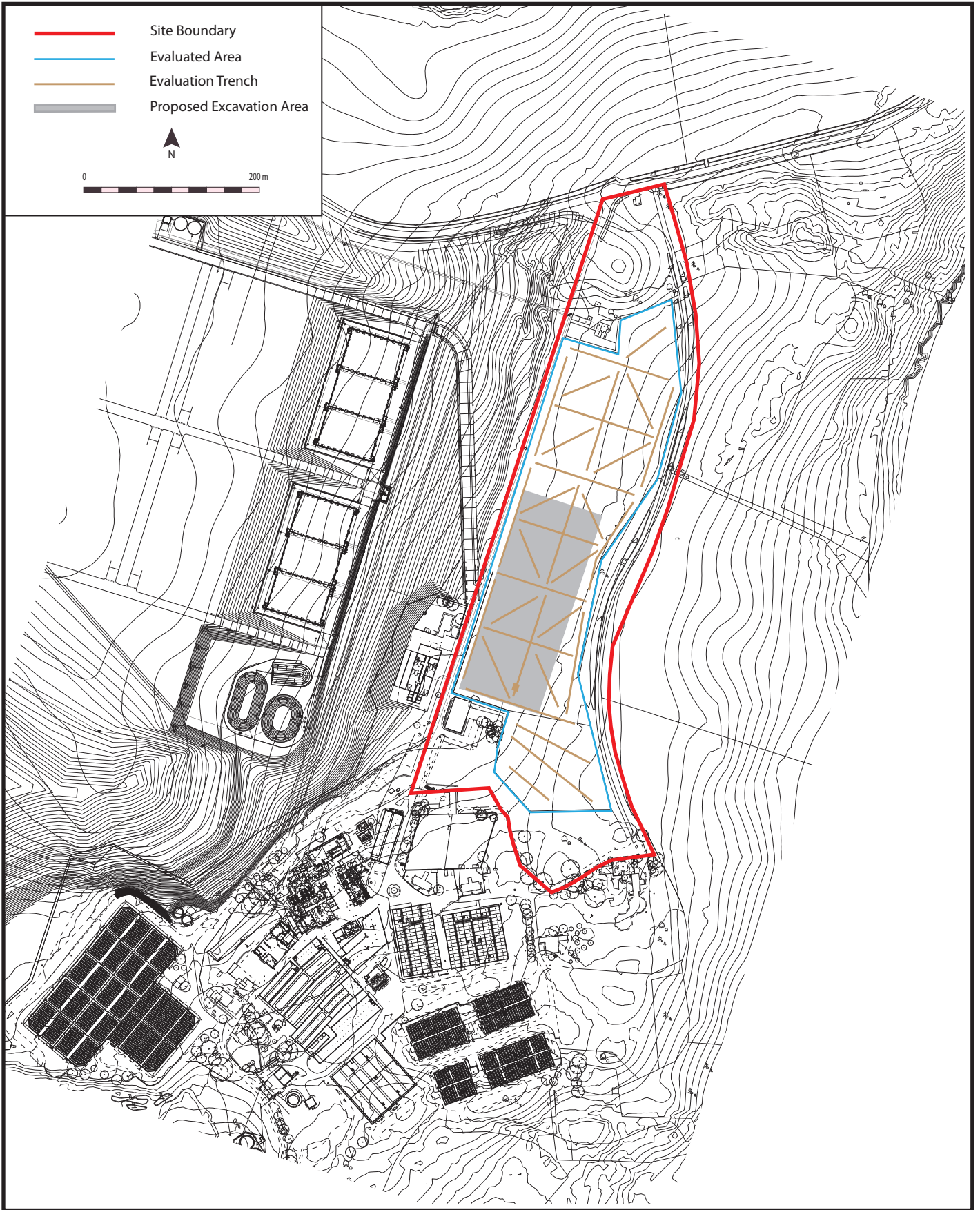


Figure 2: Trench location plan

The Macallan Distillery, Craigellachie, Moray: Archaeological Evaluation Data Structure Report

Section 2: Appendices

APPENDIX 1: EVALUATION TRENCH DESCRIPTIONS

Trench 1

<i>Dimensions</i>	110m by 2m
<i>Orientation</i>	E-W
<i>Depth of Excavation</i>	0.35m – 0.7m
<i>Significant Features</i>	Sub circular pit [101] at 53m from west end, dimensions 0.89m x 0.99m x 0.2m with medium brown sandy fill [102]
<i>Non-Significant features</i>	changes in the natural at 78m and 92m from the west end
<i>Soil make-up</i>	Topsoil of dark brown silty clay with sand and gravel.
<i>Natural</i>	Orange-brown sand and gravel
<i>Finds</i>	None

Trench 2

<i>Dimensions</i>	100m by 2m
<i>Orientation</i>	N-S
<i>Depth of Excavation</i>	0.32m – 0.52m
<i>Significant Features</i>	None
<i>Non-Significant features</i>	At 73m – 77.5m from south end tree root holes
<i>Soil make-up</i>	Topsoil of dark brown silty clay with sand and gravel.
<i>Natural</i>	Orange-brown sand and gravel
<i>Finds</i>	None

Trench 3

<i>Dimensions</i>	103m by 2m
<i>Orientation</i>	N-S
<i>Depth of Excavation</i>	0.32m – 0.42m
<i>Significant Features</i>	Oval pit [301] with fill [302] and linear cut [303] and fill [304], both seem modern.
<i>Non-Significant features</i>	Modern disturbance at 7m – 24m from south end
<i>Soil make-up</i>	Topsoil of dark brown coarse sand with lots of stones
<i>Natural</i>	Dark orange sand and gravel and light coloured sandy clay
<i>Finds</i>	None

Trench 4

<i>Dimensions</i>	104m by 2m
<i>Orientation</i>	N-S
<i>Depth of Excavation</i>	0.65m – 0.85m
<i>Significant Features</i>	At 0m – 20m from south end modern linear cut [401] with fill [402], and at 92m two shallow features [403] and [405] with burnt ash/cinder fill deposits [404] and [406]
<i>Non-Significant features</i>	None
<i>Soil make-up</i>	Topsoil of dark brown coarse sand with lots of stones
<i>Natural</i>	Dark orange sand and gravel and light coloured sandy clay
<i>Finds</i>	None

Trench 5

<i>Dimensions</i>	101m by 2m
<i>Orientation</i>	E-W
<i>Depth of Excavation</i>	0.49m – 0.8m
<i>Significant Features</i>	None
<i>Non-Significant features</i>	None
<i>Soil make-up</i>	Topsoil of dark brown coarse sand with lots of stones
<i>Natural</i>	Dark orange sand and gravel and light coloured sandy clay
<i>Finds</i>	None

Trench 6

<i>Dimensions</i>	109m by 2m
<i>Orientation</i>	N-S
<i>Depth of Excavation</i>	0.35m – 0.75m
<i>Significant Features</i>	None

<i>Non-Significant features</i>	At 69.5m to 74.5m linear cut running NE-SW containing ceramic field drain
<i>Soil make-up</i>	Topsoil of dark brown coarse sand with lots of stones
<i>Natural</i>	Dark orange sand and gravel and light coloured sandy clay
<i>Finds</i>	None
Trench 7	
<i>Dimensions</i>	101m by 2m
<i>Orientation</i>	N-S
<i>Depth of Excavation</i>	0.3m – 0.37m
<i>Significant Features</i>	None
<i>Non-Significant features</i>	Ceramic field drain at 0m to 5m from north end
<i>Soil make-up</i>	Topsoil of dark brown coarse sand with lots of stones
<i>Natural</i>	Dark orange sand and gravel and light coloured sandy clay
<i>Finds</i>	None
Trench 8	
<i>Dimensions</i>	94m by 2m
<i>Orientation</i>	N-S
<i>Depth of Excavation</i>	0.35m
<i>Significant Features</i>	Small pit [801] dimensions 0.41m x 0.45m x 0.22m with fill [802] of dark brown coarse sand
<i>Non-Significant features</i>	None
<i>Soil make-up</i>	Topsoil of dark brown coarse sand with lots of stones
<i>Natural</i>	Dark orange sand and gravel and light coloured sandy clay
<i>Finds</i>	None
Trench 9	
<i>Dimensions</i>	90m by 2m
<i>Orientation</i>	W-E
<i>Depth of Excavation</i>	0.45m – 0.5m
<i>Significant Features</i>	At 10.5m from west end oval pit [901], dimensions 1.4m x 1.98m x 0.24m with fill [902] of dark greyish brown silty sand and gravel with charcoal at the base. At 21m sub circular pit [903] dimensions 1.33m x 1.29m x 0.55m with fill [904] of dark greyish brown silty sand and gravel with charcoal at the base.
<i>Non-Significant features</i>	None
<i>Soil make-up</i>	Topsoil of dark brown coarse sand with lots of stones
<i>Natural</i>	Dark orange sand and gravel and light coloured sandy clay
<i>Finds</i>	None
Trench 10	
<i>Dimensions</i>	104m by 2m
<i>Orientation</i>	W-E
<i>Depth of Excavation</i>	0.33m – 0.45m
<i>Significant Features</i>	At 3m to 23m from west end, large modern drainage feature filled with hardcore and modern rubbish, same as linear feature in trench 4. Both linked to modern water management built to the west.
<i>Non-Significant features</i>	None
<i>Soil make-up</i>	Topsoil of dark brown coarse sand with lots of stones
<i>Natural</i>	Dark orange sand and gravel and light coloured sandy clay
<i>Finds</i>	None
Trench 11	
<i>Dimensions</i>	106m by 2m
<i>Orientation</i>	N-S
<i>Depth of Excavation</i>	0.32m – 0.34m
<i>Significant Features</i>	None
<i>Non-Significant features</i>	None
<i>Soil make-up</i>	Topsoil of dark brown coarse sand with lots of stones
<i>Natural</i>	Dark orange sand and gravel and light coloured sandy clay
<i>Finds</i>	None

Trench 12

<i>Dimensions</i>	100m by 2m
<i>Orientation</i>	N-S
<i>Depth of Excavation</i>	0.33m – 0.38m
<i>Significant Features</i>	possible small pit [1201], 0.4m in diameter at 91m from north end.
<i>Non-Significant features</i>	None
<i>Soil make-up</i>	Topsoil of dark brown coarse sand with lots of stones
<i>Natural</i>	Dark orange sand and gravel and light coloured sandy clay
<i>Finds</i>	None

Trench 13

<i>Dimensions</i>	102m by 2m plus additional 20m x 20m box around feature [1307]
<i>Orientation</i>	N-S
<i>Depth of Excavation</i>	0.42m – 0.55m
<i>Significant Features</i>	From the north end post hole [1301] at 9m, shallow pit [1303] at 26m, small pit [1305] at 31.2m, ring ditch [1307] at 91-94m and post hole [1309] at 91m.
<i>Non-Significant features</i>	None
<i>Soil make-up</i>	Topsoil of dark brown coarse sand with lots of stones
<i>Natural</i>	Dark orange sand and gravel and light coloured sandy clay
<i>Finds</i>	None

Trench 14

<i>Dimensions</i>	60m by 2m
<i>Orientation</i>	NW-SE
<i>Depth of Excavation</i>	0.37m – 0.47m
<i>Significant Features</i>	None
<i>Non-Significant features</i>	At 51-54m from NW end cut for ceramic field drain
<i>Soil make-up</i>	Topsoil of dark brown coarse sand with lots of stones
<i>Natural</i>	Dark orange sand and gravel and light coloured sandy clay
<i>Finds</i>	None

Trench 15

<i>Dimensions</i>	90m by 2m
<i>Orientation</i>	E-W
<i>Depth of Excavation</i>	0.34m – 0.45m
<i>Significant Features</i>	Semi circle of post holes [1501], [1503] and [1505] all roughly 0.25m in diameter at 82m-85m from East end.
<i>Non-Significant features</i>	Stone filled drain orientation NE-SW at 6m-7m and ceramic field drain orientation N-S at 12m-13m
<i>Soil make-up</i>	Topsoil of dark brown coarse sand with lots of stones
<i>Natural</i>	Dark orange sand and gravel and light coloured sandy clay
<i>Finds</i>	None

Trench 16

<i>Dimensions</i>	52m by 2m
<i>Orientation</i>	SW-NE
<i>Depth of Excavation</i>	0.37m – 0.46m
<i>Significant Features</i>	None
<i>Non-Significant features</i>	None
<i>Soil make-up</i>	Topsoil of dark brown coarse sand with lots of stones
<i>Natural</i>	Dark orange sand and gravel and light coloured sandy clay
<i>Finds</i>	None

Trench 17

<i>Dimensions</i>	65m by 2m
<i>Orientation</i>	NW-SE
<i>Depth of Excavation</i>	0.34m – 0.36m
<i>Significant Features</i>	Large pit [1701] at 61m from NW end, and large pit [1703] at 63m both with stony full deposits with lots of charcoal [1702] and [1704]
<i>Non-Significant features</i>	None

Soil make-up	Topsoil of dark brown coarse sand with lots of stones
Natural	Dark orange sand and gravel and light coloured sandy clay
Finds	None
Trench 18	
Dimensions	54m by 2m
Orientation	NE-SW
Depth of Excavation	0.36m – 0.38m
Significant Features	None
Non-Significant features	Stone filled drain orientation E-W at 12m – 15m from SW end
Soil make-up	Topsoil of dark brown coarse sand with lots of stones
Natural	Dark orange sand and gravel and light coloured sandy clay
Finds	None
Trench 19	
Dimensions	50m by 2m
Orientation	NW-SE
Depth of Excavation	0.40m – 0.44m
Significant Features	None
Non-Significant features	Thin band of clean sand over the natural from 15m to 20m from the SE end. Probably modern.
Soil make-up	Topsoil of dark brown coarse sand with lots of stones
Natural	Dark orange sand and gravel and light coloured sandy clay
Finds	None
Trench 20	
Dimensions	80m by 2m
Orientation	E-W
Depth of Excavation	0.36m – 0.44m
Significant Features	Pit [2001] at 59m from West end.
Non-Significant features	None
Soil make-up	Topsoil of dark brown coarse sand with lots of stones
Natural	Dark orange sand and gravel and light coloured sandy clay
Finds	None
Trench 21	
Dimensions	52m by 2m
Orientation	NE-SW
Depth of Excavation	0.34m – 0.42m
Significant Features	None
Non-Significant features	None
Soil make-up	Topsoil of dark brown coarse sand with lots of stones
Natural	Dark orange sand and gravel and light coloured sandy clay
Finds	None
Trench 22	
Dimensions	48m by 2m
Orientation	NW-SE
Depth of Excavation	0.34m – 0.38m
Significant Features	None
Non-Significant features	None
Soil make-up	Topsoil of dark brown coarse sand with lots of stones
Natural	Dark orange sand and gravel and light coloured sandy clay
Finds	None
Trench 23	
Dimensions	58m by 2m
Orientation	NE-SW
Depth of Excavation	0.37m – 0.44m
Significant Features	At 4m from NE end, pit [2301] and post hole [2303]
Non-Significant features	None
Soil make-up	Topsoil of dark brown coarse sand with lots of stones

<i>Natural</i>	Dark orange sand and gravel and light coloured sandy clay
<i>Finds</i>	None
Trench 24	
<i>Dimensions</i>	61m by 2m
<i>Orientation</i>	SW-NE
<i>Depth of Excavation</i>	0.36m – 0.56m
<i>Significant Features</i>	None
<i>Non-Significant features</i>	At 0m-19m from SW end, large modern drainage feature also know in trench 4 and 10
<i>Soil make-up</i>	Topsoil of dark brown coarse sand with lots of stones
<i>Natural</i>	Dark orange sand and gravel and light coloured sandy clay
<i>Finds</i>	None
Trench 25	
<i>Dimensions</i>	96m by 2m
<i>Orientation</i>	E-W
<i>Depth of Excavation</i>	0.44m – 0.56m
<i>Significant Features</i>	None
<i>Non-Significant features</i>	At 13m from West end, ceramic filed drain, orientation N-S
<i>Soil make-up</i>	Topsoil of dark brown coarse sand with lots of stones
<i>Natural</i>	Dark orange sand and gravel and light coloured sandy clay
<i>Finds</i>	None
Trench 26	
<i>Dimensions</i>	67m by 2m
<i>Orientation</i>	SW-NE
<i>Depth of Excavation</i>	0.37m – 0.58m
<i>Significant Features</i>	None
<i>Non-Significant features</i>	Stone drain orientation E-W at 49m – 53m from NE end
<i>Soil make-up</i>	Topsoil of dark brown coarse sand with lots of stones
<i>Natural</i>	Dark orange sand and gravel and light coloured sandy clay
<i>Finds</i>	None
Trench 27	
<i>Dimensions</i>	53m by 2m
<i>Orientation</i>	SE-NW
<i>Depth of Excavation</i>	0.37m – 0.52m
<i>Significant Features</i>	None
<i>Non-Significant features</i>	plough scars orientation N-S at NW end
<i>Soil make-up</i>	Topsoil of dark brown coarse sand with lots of stones
<i>Natural</i>	Dark orange sand and gravel and light coloured sandy clay
<i>Finds</i>	None
Trench 28	
<i>Dimensions</i>	48m by 2m
<i>Orientation</i>	NE-SW
<i>Depth of Excavation</i>	0.37m – 0.39m
<i>Significant Features</i>	None
<i>Non-Significant features</i>	None
<i>Soil make-up</i>	Topsoil of dark brown coarse sand with lots of stones
<i>Natural</i>	Dark orange sand and gravel and light coloured sandy clay
<i>Finds</i>	None
Trench 29	
<i>Dimensions</i>	50m by 2m
<i>Orientation</i>	NE-SW
<i>Depth of Excavation</i>	0.37m – 0.42m
<i>Significant Features</i>	None
<i>Non-Significant features</i>	Modern disturbance at 18m – 24m from NE end and some visible N-S plough scars
<i>Soil make-up</i>	Topsoil of dark brown coarse sand with lots of stones

Natural Dark orange sand and gravel and light coloured sandy clay
Finds None

Trench 30

Dimensions 80m by 2m
Orientation NW-SE
Depth of Excavation 0.40m – 1.2m
Significant Features None
Non-Significant features Some visible E-W plough scars
Soil make-up Topsoil of dark brown coarse sand with lots of stones
Natural Dark orange sand and gravel and light coloured sandy clay
Finds None

Trench 31

Dimensions 100m by 2m
Orientation NW-SE
Depth of Excavation 0.40m – 0.60m
Significant Features None
Non-Significant features None
Soil make-up Topsoil of dark brown coarse sand with lots of stones
Natural Dark orange sand and gravel and light coloured sandy clay
Finds None

Trench 32

Dimensions 25m by 2m
Orientation SE-NW
Depth of Excavation 0.50m – 0.60m
Significant Features None
Non-Significant features None
Soil make-up Topsoil of dark brown coarse sand with lots of stones
Natural Dark orange sand and gravel and light coloured sandy clay
Finds None

APPENDIX 2: CONTEXT REGISTER

Context No.	Area	Description and Interpretation
[101]	Tr.1	Circular pit measuring 0.87m x 1.00m x 0.27m with gradually sloping sides and rounded base. Single fill [102] Cut of pit.
[102]	Tr.1	Dark brown silty sand and gravel with occasional charcoal. Fill of pit [101].
[301]	Tr.3	Cut of sub-circular pit, measuring 1.22m x 1.12m x 0.18m with gentle sloping sides and a flat base. Single fill [302] Cut of pit.
[302]	Tr.3	Medium brown-grey silty sand and gravel with abundant small (approximately 0.05m diameter) stones. Fill of pit [301].
[401]	Tr.4	Cut of pit.
[402]	Tr.4	Fill of pit [401].
[403]	Tr.4	Cut of sub-circular pit with irregular edges, measuring 0.62m x 0.54m x 0.03m. Very shallow with flat base. Single fill [404]. Cut of pit.
[404]	Tr.4	Mottled bright orange-red silty clay with lots of black charcoal. Fill of pit [403].
[801]	Tr.8	Cut of sub-circular pit, measuring 0.46m x 0.41m x 0.21m with steep sides and pointed base. Single fill [802]. Cut of pit.
[802]	Tr.8	Dark grey-brown silty sand and gravel with a few charcoal flecks. Fill of pit [801].
[901]	Tr.9	Cut of large oval pit measuring 1.78m x 1.31m x 0.26m with steep sides and flat base. Single fill [902]. Cut of pit.
[902]	Tr.9	Medium grey-brown silty sand and gravel with abundant stones and lots of charcoal in a 0.05m thick band at its base. Fill of pit [901].
[903]	Tr.9	Cut of sub-circular pit, measuring 1.32m x 1.22m x 0.52m, with steep sides and a flat base. Single fill [903]. Cut of pit.
[904]	Tr.9	Medium brown-grey silty sand and gravel with frequent large stones at the top and moderate charcoal flecks at its base. Fill of pit [903].
[1201]	Tr.12	Cut of pit.
[1202]	Tr.12	Fill of pit [1201].
[1301]	Tr.13	Cut of oval pit, measuring 0.55m x 0.31m x 0.28m, with steep sides and flat base. Single fill [1302]. Cut of pit.
[1302]	Tr.13	Dark grey silty sand and gravel with occasional small stones and charcoal flecks. Fill of pit [1301].
[1303]	Tr.13	Cut of sub-circular pit, measuring 0.99m x 0.80m x 0.14m, with shallow sides and concave base. Single fill [1304]. Cut of pit.
[1304]	Tr.13	Dark grey-brown silty sand and gravel with occasional large stones. Fill of pit [1303].
[1305]	Tr.13	Cut of sub-circular pit, measuring 0.28m x 0.27m x 0.10m, with steep sides and flat base. Cut of pit.
[1306]	Tr.13	Dark grey-brown silty sand and gravel with rare charcoal flecks. Fill of pit [1305].
[1307]	Tr.13	Curvilinear cut, orientation E-W, measuring 4.3m x 1.75m x 0.24m, with steep sides and a concave to flat base. Pointed terminal at East end, and broadens out at West end. Continues to west. Cut of Ring Ditch.
[1308]	Tr.13	Dark grey-brown silty coarse sand and gravel with moderate rounded medium sized stones.

		Band of rich charcoal at its base 0.05m thick. Fill of Ring Ditch [1307].
[1309]	Tr.13	Cut of oval pit, measuring 0.50m x 0.37m x 0.25m with steep sides and a concave base. Single fill [1310] Cut of pit, possibly posthole related to ring ditch [1307].
[1310]	Tr.13	Dark brown-grey silty coarse sand and gravel with occasional large stones (possible post packing material) Fill of pit [1309].
[1501]	Tr.15	Cut of sub-circular pit, measuring 0.35m x 0.32m x 0.28m with steep to vertical sides and a flat base. Single fill [1502]. Cut of pit.
[1502]	Tr.15	Dark grey-brown silty sand and gravel. Fill of pit [1501].
[1503]	Tr.15	Cut of sub-circular pit, measuring 0.31m x 0.32m. Cut of pit.
[1504]	Tr.15	Dark grey-brown silty sand and gravel. Fill of pit [1503].
[1505]	Tr.15	Cut of sub-circular pit, measuring 0.29m x 0.31m. Cut of pit.
[1506]	Tr.15	Dark grey-brown silty sand and gravel. Fill of pit [1505].
[1701]	Tr.17	Cut of sub-oval pit, orientation NW-SE. Not excavated. Cut of pit.
[1702]	Tr.17	Dark grey-brown silty sand and gravel with lots of sub-angular and sub-rounded stones (average 0.2m x 0.1m x 0.1m) Fill of pit [1701].
[1703]	Tr.17	Cut of sub-oval pit, orientation NW-SE. Not excavated. Cut of pit.
[1704]	Tr.17	Dark grey-brown silty sand and gravel with frequent large charcoal flecks. At the top of the deposit is a large flat stone possibly a quern. Fill of pit [1703].
[2001]	Tr.20	Cut of pit.
[2002]	Tr.20	Fill of pit [2001].
[2301]	Tr.23	Cut of circular pit, measuring 0.58m x 0.58m x 0.25m, with steep sides and a flat base. Single fill [2302]. Cut of pit.
[2302]	Tr.23	Dark grey-brown silty sand and gravel with occasional small stones. Fill of pit [2301].
[2303]	Tr.23	Cut of sub circular pit, measuring 0.32m x 0.30m, not excavated. Cut of pit.
[2304]	Tr.23	Dark grey-brown silty sand and gravel. Fill of pit [2303].

APPENDIX 3: PHOTOGRAPHIC REGISTER

Digital Photographs

Frame	Area	F. No	Description	From	Date
0		-	Registration	-	
1	Tr 1	[101]	Pit [101] east facing section	NW	27/01/14
2	-	-	General view of field	S	27/01/14
3	-	-	General view of field	N	27/01/14
4	-	-	General view of field	NW	27/01/14
5	-	-	General view of field	SW	27/01/14
6	-	-	Void	-	-
7	Tr 2	-	Post excavation shot	S	28/01/14
8	Tr 1	-	Post excavation shot	W	28/01/14
9	Tr 3	-	Trench under excavation – working shot	S	28/01/14
10	Tr 3	[301]	Pit [301] SE - facing section	NW	28/01/14
11	Tr 3	[301]	Pit [301] SE - facing section	SW	28/01/14
12	Tr 3	[303]	Furrow [303] N - facing section	NW	28/01/14
13	Tr 3	-	Post excavation shot	N	28/01/14
14	Tr 4	[403]	N - facing section of pit [403]	N	28/01/14
15	Tr 4	[405]	S – facing section of pit [405]	S	28/01/14
16	Tr 5	-	Post excavation shot	E	28/01/14
17	Tr 8	[801]	Pit [801] E – facing section	E	28/01/14
18	Tr 8	-	Post excavation shot	S	28/01/14
19	Tr 9	[901]	Pit [901] SW - facing section	SW	28/01/14
20	Tr 9	[903]	Pit [903] Partially excavated	N	28/01/14
21	Tr 9	[903]	Pit [903] Partially excavated	S	28/01/14
22	Tr 7	-	Post excavation shot	S	28/01/14
23	Tr 8	-	Post excavation shot	N	28/01/14
24	Tr 9	-	Post excavation shot	E	28/01/14
25	Tr 10	-	Shot of modern disturbance in Trench 10	E	29/01/14
26	Tr 10	-	General shot of Trench 10 under excavation	W	29/01/14
27	Tr 11	-	Post excavation shot	S	29/01/14
28	Tr 9	[903]	Pit [903] south and east facing section	SE	29/01/14
29	-	-	Registration shot	-	29/01/14
30	Tr 12	-	Post excavation shot	S	29/01/14
31	Tr 13	[1301]	West – facing section of [1301]	W	29/01/14
32	Tr 13	[1301]	Post excavation view of [1301]	S	29/01/14
33	Tr 13	[1303]	SW – facing section of [1303]	SW	29/01/14
34	Tr 13	[1305]	SE – facing section of [1305]	SE	29/01/14
35	Tr 13	-	Post excavation shot	S	29/01/14
36	Tr 14	-	Trench 14 under excavation – working shot	S	29/01/14
37	Tr 13	[1307]	Post excavation view of [1307]	SW	29/01/14
38	Tr 13	[1307]	NE – facing section of [1307]	NE	29/01/14
39	Tr 13	[1309]	SW – facing section of posthole [1309]	SW	29/01/14
40	Tr 13	[1307] +[1309]	Post hole [1309] and ditch [1307] post excavation	E	29/01/14
41	Tr 16	-	Post excavation shot	SW	29/01/14
42	Tr 15	-	Trench 15 under excavation – working shot	E	29/01/14
43	Tr 15	[1501]	Post hole [1501] half sectioned	E	29/01/14
44	Tr 15	[1501]	N – facing section of posthole [1501]	N	29/01/14
45	Tr 15	Various	Postholes [1501] [1503] and [1505]	E	29/01/14
46	Tr 15	Various	Postholes [1501] [1503] and [1505]	W	29/01/14
47 – 48	Tr 15	[1501]	Post excavation shots of posthole [1501]	S	29/01/14

The Macallan Distillery, Craigellachie, Moray: Archaeological Evaluation Data Structure Report

Frame	Area	F. No	Description	From	Date
49	Tr 17	-	Post excavation shot	NW	29/01/14
50	Tr 18	-	Trench 18 under excavation – working shot	SW	30/01/14
51	Tr 19	-	Post excavation shot	NW	30/01/14
52	Tr 20	-	Trench 20 under excavation – working shot	W	30/01/14
53	Tr 20	[2001]	Pit [2001] pre-excavation shot	W	30/01/14
54	Tr 21	-	Post excavation shot	SW	30/01/14
55	Tr 22	-	Trench 22 under excavation – working shot	SE	30/01/14
56	Tr 22	-	Post excavation shot	NW	30/01/14
57	Tr 23	[2301] +[2303]	Shot of pit [2301] and posthole [2303]	NE	30/01/14
58	Tr 23	[2301]	NE – facing section of pit [2301]	NE	30/01/14
59	Tr 23	-	Post excavation shot	SW	30/01/14
60	Tr 24	-	Post excavation shot	NE	30/01/14
61	Tr 25	-	Trench 25 under excavation – working shot	W	30/01/14
62	Tr 17	[1701] +[1703]	Pits [1701] and [1703]	SE	30/01/14
63	Tr 17	[1701] +[1703]	Pits [1701] and [1703]	NW	30/01/14
64	Tr 17	[1701] +[1703]	Pits [1701] and [1703]	N	30/01/14
65	Tr 13	[1307] +[1309]	Ring ditch [1307] and posthole [1309]	SW	30/01/14
66	Tr 13	[1307] +[1309]	Ring ditch [1307] and posthole [1309]	NE	30/01/14
67	Tr 13	[1307] +[1309]	Ring ditch [1307] and posthole [1309]	E	30/01/14
68	Tr 26	-	Trench 26 under excavation – working shot	NE	30/01/14
69	Tr 27	-	Post excavation shot	NW	30/01/14
70	Tr 28	-	Trench 28 under excavation – working shot	SW	30/01/14
71	Tr 28	-	Post excavation shot	NE	30/01/14
72	Tr 29	-	Trench 29 under excavation – working shot	NE	30/01/14
73	Tr 29	-	Post excavation shot	SW	30/01/14

APPENDIX 4: DRAWING REGISTER

Drawing No.	Feature No.	Details	Scale
1	[101]	E-facing section of pit [101]	1:10
2	[301]	SW-facing section pit [301]	1:10
3	[501]	S & W facing sections of pit [501]	1:10
4	[903]	S & W facing sections of pit [903]	1:10
5	[1301]	W-facing section posthole [1301]	1:10
6	[1303]	SW-facing section pit [1303]	1:10
7	[1305]	SE-facing section posthole [1305]	1:10
8	[1307]	SE-facing section pit [1307]	1:10
9	[1309]	SW-facing section posthole [1309]	1:10
10	[801]	NE-facing section posthole [801]	1:10
11	[1501]	E-facing section posthole [1501]	1:10
12	[2301]	NE-facing section pit [2301]	1:10
13	[401]	N-facing section pit/hearth [401]	1:10
14	[403]	S-facing section pit/hearth [403]	1:10

APPENDIX 5: FINDS REGISTER

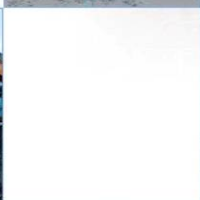
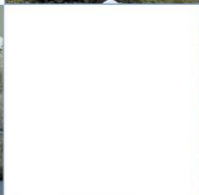
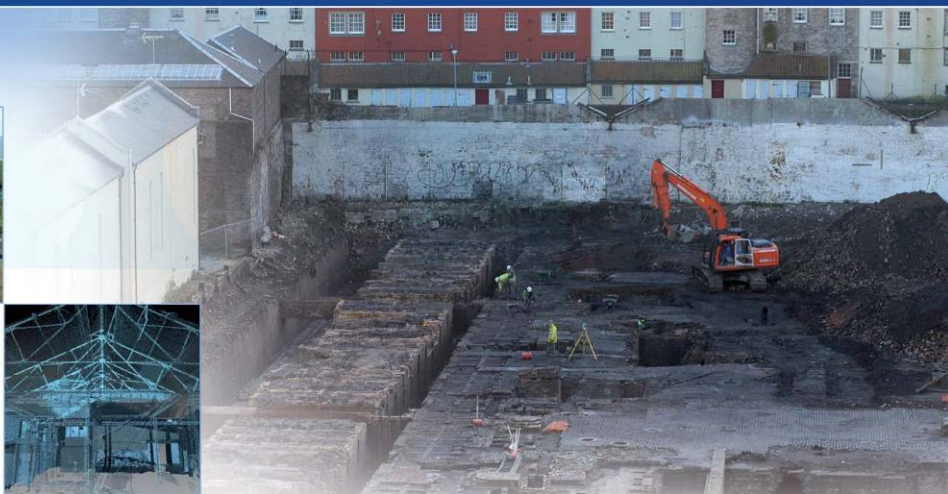
Finds No.	Area	Context No.	Description
1	U/S	topsoil	Topsoil finds

APPENDIX 6: SAMPLE REGISTER

Context No.	Area	Quantity (litres)
[102]	Tr. 1	10
[302]	Tr. 3	10
[902]	Tr. 9	10
[904]	Tr. 9	10
[1308]	Tr. 13	10
[1310]	Tr. 13	10
[1502]	Tr. 15	10
[1704]	Tr. 17	10

APPENDIX 7: 'DISCOVERY AND EXCAVATION IN SCOTLAND' REPORT

LOCAL AUTHORITY:	Moray Council
PROJECT TITLE/SITE NAME:	The Macallan Distillery Evaluation
PROJECT CODE:	22624
PARISH:	
NAME OF CONTRIBUTOR:	Lindsay Dunbar
NAME OF ORGANISATION:	AOC Archaeology Group
TYPE(S) OF PROJECT:	Evaluation
NMRS NO(S):	N/A
SITE/MONUMENT TYPE(S):	Pits, postholes & possible ringditch roundhouse
SIGNIFICANT FINDS:	None
NGR (2 letters, 6 figures)	NJ 27800 44700
START DATE (this season)	27 th January 2015
END DATE (this season)	31 st January 2015
PREVIOUS WORK (inc DES)	None
MAIN (NARRATIVE) DESCRIPTION: (May include information from other fields)	<p>AOC Archaeology Group undertook an archaeological evaluation on behalf of The Macallan Distillery Company Limited during the development of a new distillery and visitor centre on land adjacent to the existing distillery.</p> <p>A total of 32 evaluation trenches totalling an area of 5026 m² were excavated within the development area. Of the c.7.5 ha site a total of c.2.5 ha was unavailable to trench due to presence of mature woodland, live services, existing infrastructure such as roads and carparks. Of the land available for evaluation the trenching totalled just over 10 %.</p> <p>The evaluation revealed a stratigraphic sequence of sandy topsoil overlying natural deposits of sand gravel and clay. Numerous small archaeological cut features were identified of which variously sized pits were most prominent alongside some smaller postholes and a possible ringditch roundhouse. These features where investigated revealed only charcoal with no artefacts recovered which could date the activity on site. From the topsoil a single struck lithic was found.</p>
PROPOSED FUTURE WORK:	To be confirmed
CAPTION(S) FOR ILLUSTRATIONS:	N/A
SPONSOR OR FUNDING BODY:	The Macallan Distillery Company Limited
ADDRESS OF MAIN CONTRIBUTOR:	AOC Archaeology Group, Edgefield Road Industrial Estate, Loanhead, Midlothian, EH20 9SY
EMAIL ADDRESS:	admin@aocarchaeology.com
ARCHIVE LOCATION	Archive to be deposited in NMRS



AOC Archaeology Group, **Edgefield Industrial Estate, Edgefield Road, Loanhead EH20 9SY**
tel: **0131 440 3593** | fax: **0131 440 3422** | e-mail: **edinburgh@aocarchaeology.com**

www.aocarchaeology.com