

Trump International Golf Links, Scotland

TRUMP CHAMPIONSHIP GOLF COURSE, MENIE
ESTATE, ABERDEENSHIRE, SCOTLAND

Watching Brief on Marram Grass planting for the
construction of the championship golf course

A Written Scheme of Archaeological Investigation

Client: Ironside Farrar

Date: August 2009

1 Introduction

This document is submitted for approval by Aberdeenshire Council as Planning Authority, on behalf of Ironside Farrar, as a written scheme of archaeological investigation for an archaeological watching brief on Marram grass planting for the championship golf course at the proposed golf and resort development at Menie Estate, Aberdeenshire.

This written scheme is based on requirements outlined by Moira Greig of Aberdeen Council Archaeology Service at a meeting with planners and James Miller of Ironside Farrar in February 2009, and clarified through E-mails to Sonya Galloway, planner at the Aberdeen Council.

This document refers to the previous specification which includes an Outline Research Design which establishes the basis for a systematic programme of purposeful investigation and also sets out the detailed methodological approach to be adopted for possible later stages of archaeological investigations.

2 Background

Location

The development area is situated some 8 km to the north of Aberdeen at Menie estate (NGR NJ 98 20) immediately to the north of Balmedie. The area is roughly D-shaped facing the North Sea to the east. The development area covers 452 hectares and extends just less than 4.3 km along the coast and over 2 km inland to the west.

The championship golf course will be located in the dune system along the coast to the east. It extends some 3.3 km north to south along the coast. (Illus 1)

General Archaeological Potential and Probable Impact of Development

Previous surveys have identified a number of sites in the area affected by the construction of the golf course, mainly comprising early prehistoric flint scatters. In addition two find spots are believed to lie within the limits of the golf course.

Marram Grass planting will be undertaken in areas shown on Illus 2. This will involve hand sprigging grass rhizomes from the donor areas and some mechanical removal and replanting (slabbing). It is understood that the details of this will be decided on site as work progresses. Hand sprigging will not need archaeological watching brief.

The areas between the tees, fairways and greens will not be extensively landscaped (Illus 2).

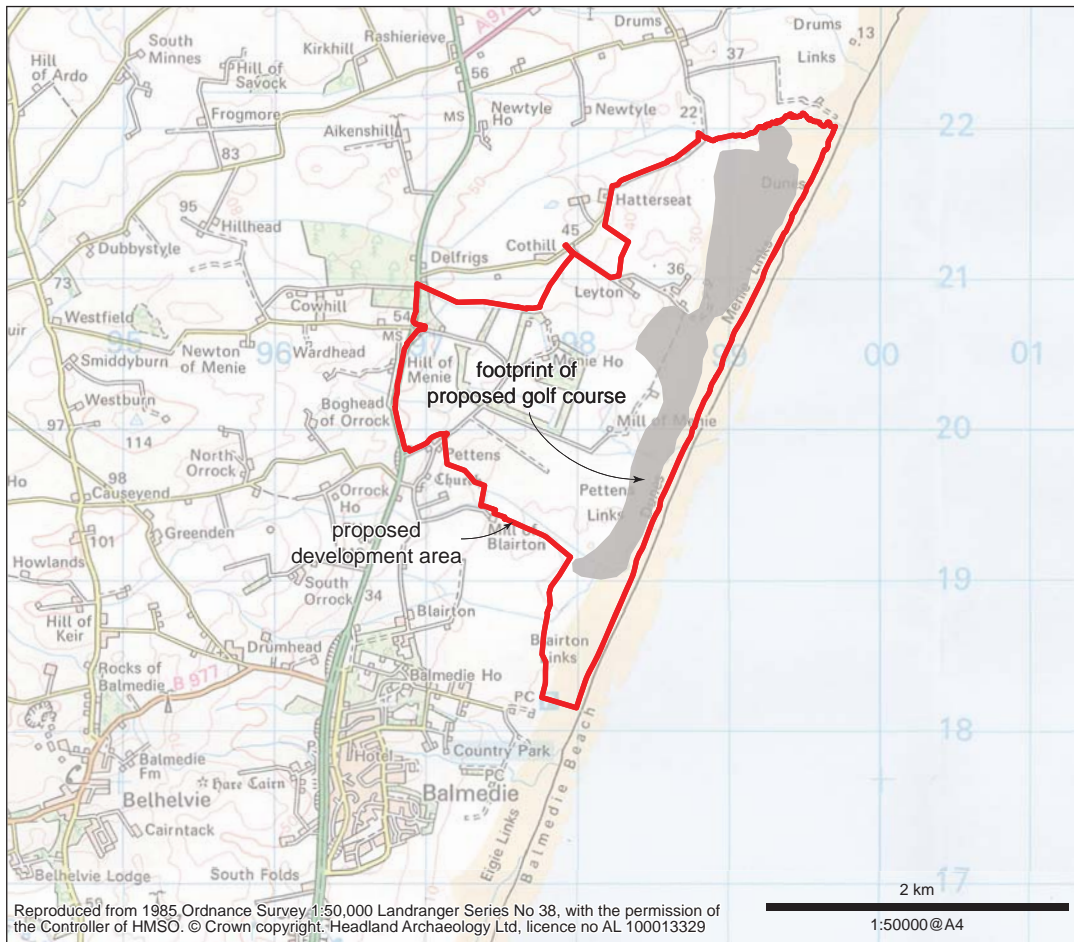
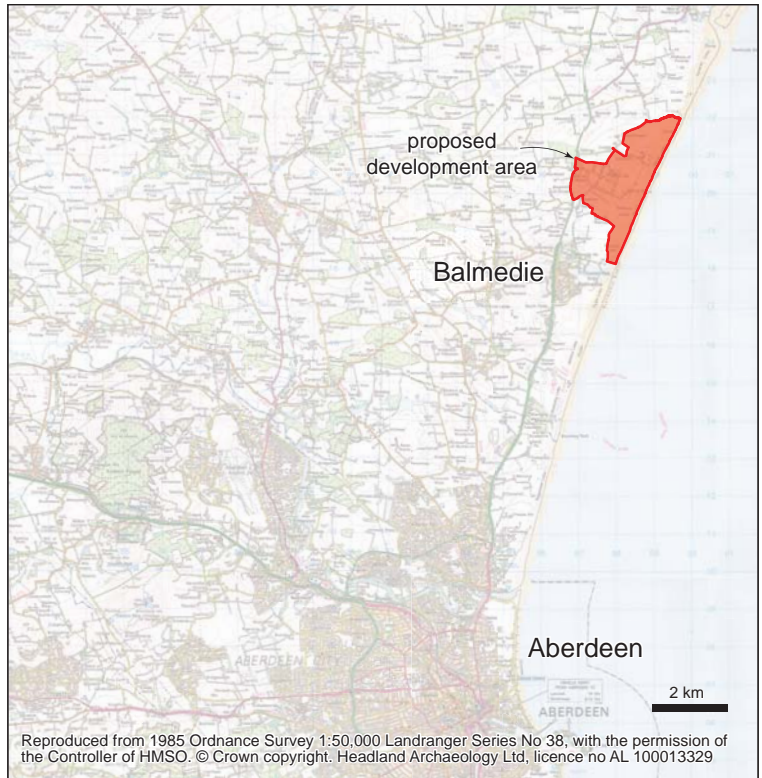
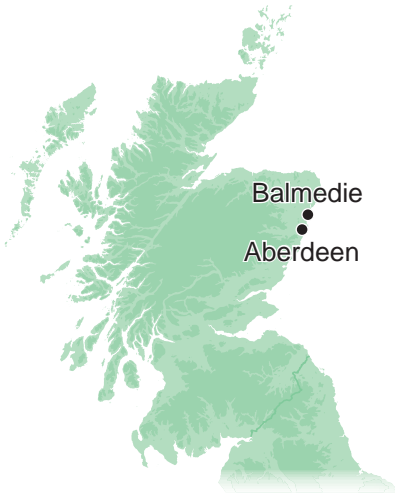
3 Detailed Methods

Watching Brief

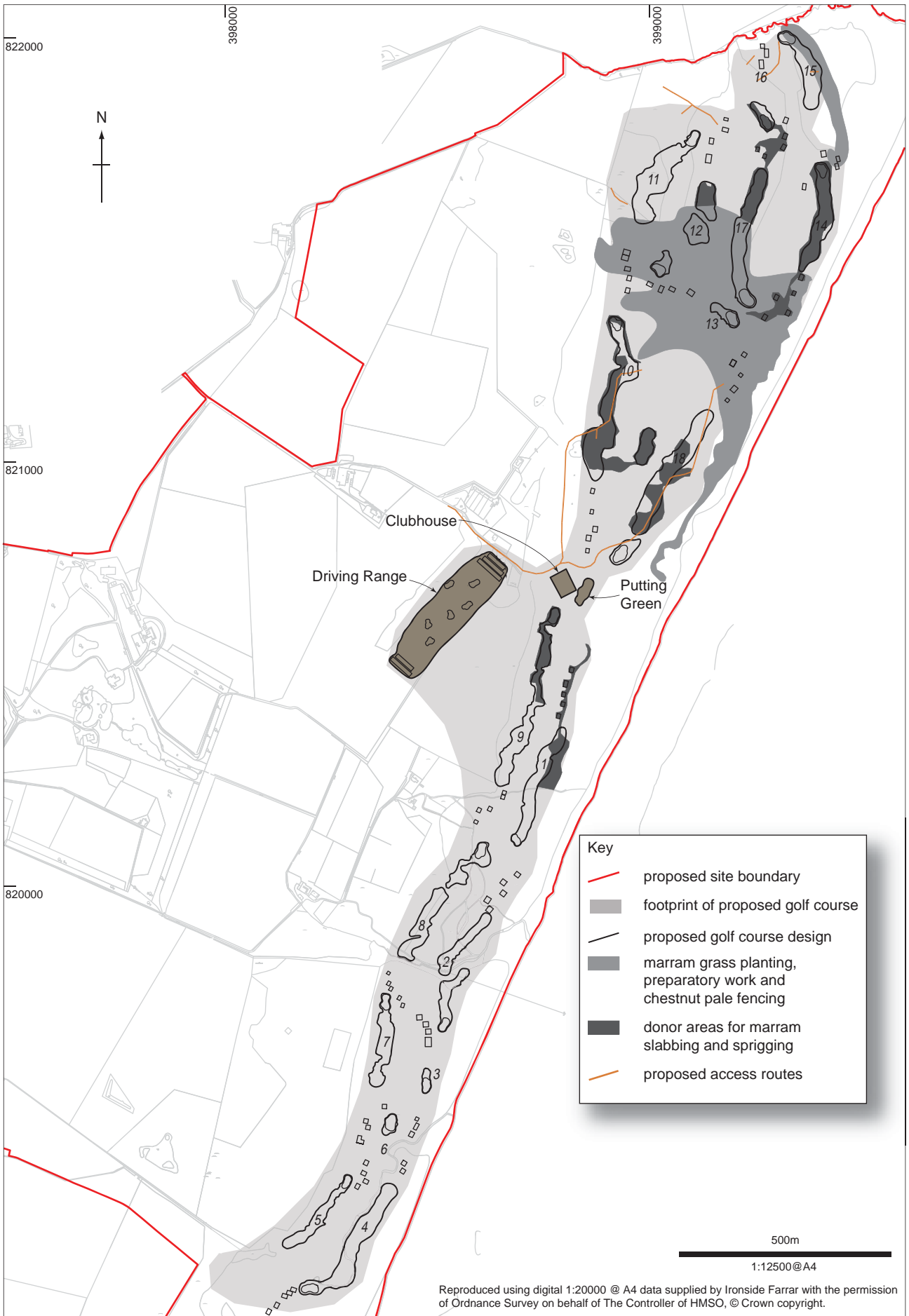
Attendance will be made in accordance with the contractor's programme. The aim of this programme of archaeological monitoring is to locate, identify and record any presently unknown archaeological remains which may survive within the development area that are to be affected by

the development. Aberdeenshire Council require that the plant used for slabbing be under the supervision and control of the archaeologist.

In the event that archaeological features or deposits are encountered during the work, the client and Aberdeenshire Council will be informed immediately so that agreement can be reached on an appropriate strategy for their recording and excavation. These sites will be marked out and protected from disturbance. Excavation and recording of any archaeological features will be completed in accordance with the overarching WSI to the satisfaction of Aberdeenshire Council before construction work continues.



Illus 1. Trump International Links Golf Course- location plan



Illus 2. Layout of the links golf course