

Trump International Golf Links, Scotland

TRUMP CHAMPIONSHIP GOLF COURSE, MENIE
ESTATE, ABERDEENSHIRE, SCOTLAND

Trial Trench Evaluation of Cairn on the championship
golf course

A Written Scheme of Archaeological Investigation

Client: Ironside Farrar

Date: October 2009

1 Introduction

This document is submitted for approval by Aberdeenshire Council as Planning Authority, on behalf of Ironside Farrar, as a written scheme of archaeological investigation for a trial trench evaluation of a feature identified as a cairn within the area of the championship golf course at the proposed golf and resort development at Menie Estate, Aberdeenshire.

This written scheme is based on requirements outlined by Moira Greig of Aberdeen Council Archaeology Service at a site meeting on Wednesday 2nd September 2009.

This document refers to the previous specification which includes an Outline Research Design which establishes the basis for a systematic programme of purposeful investigation and also sets out the detailed methodological approach to be adopted for possible later stages of archaeological investigations.

2 Background

Location

The development area is situated some 8 km to the north of Aberdeen at Menie estate (NGR NJ 98 20) immediately to the north of Balmedie. The area is roughly D-shaped facing the North Sea to the east. The development area covers 452 hectares and extends just less than 4.3 km along the coast and over 2 km inland to the west.

The championship golf course will be located in the dune system along the coast to the east. It extends some 3.3 km north to south along the coast. (Illus 1)

General Archaeological Potential and Probable Impact of Development

Previous surveys have located a possible cairn in the area affected by the construction of the golf course. Aberdeenshire County Council's Archaeologists (ACAS) have requested that the true nature of the cairn is established prior to the construction phase.

3 Detailed Methods

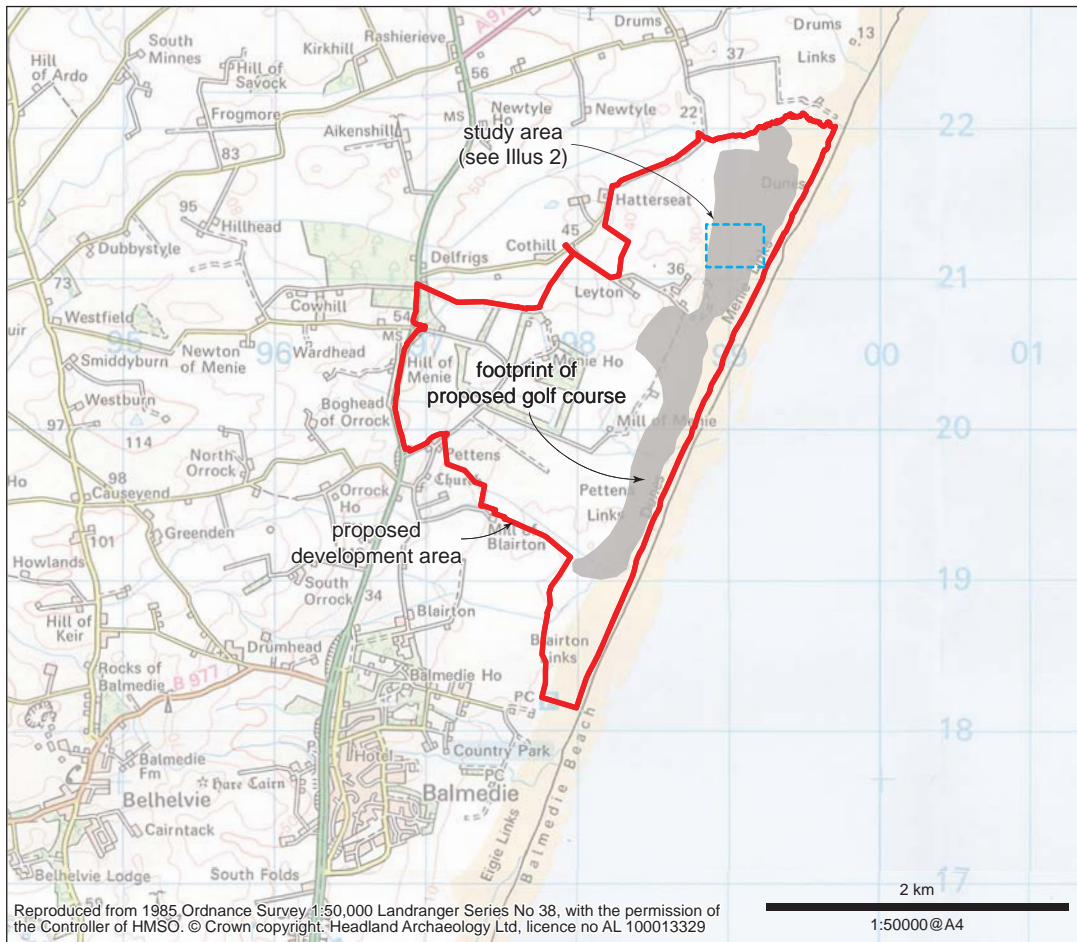
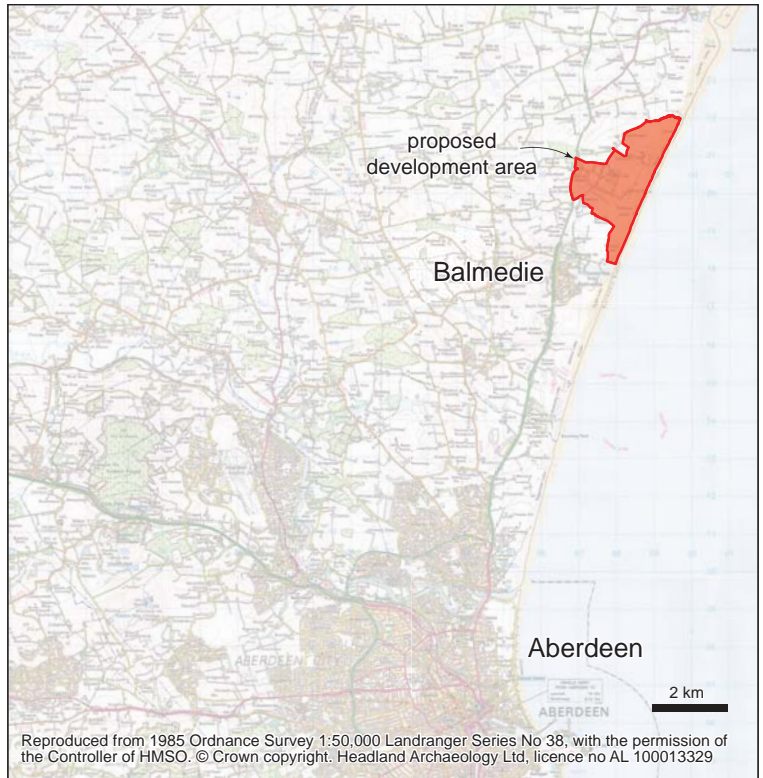
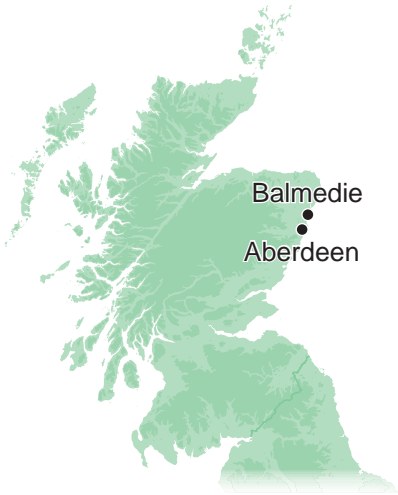
Evaluation of cairn at NJ 99216 21140

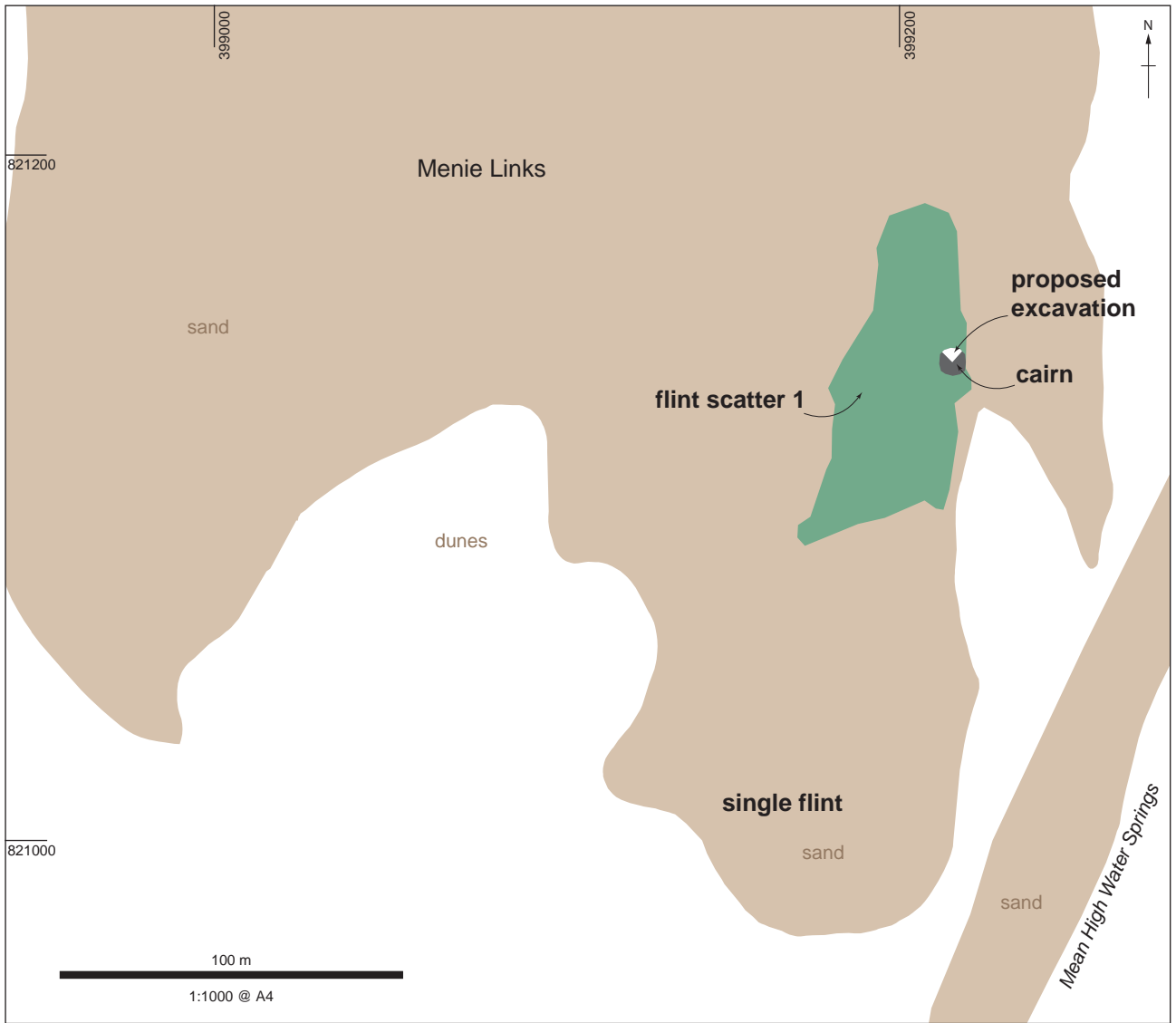
The cairn is located at the edge of one of the flint scatters in the area (Illus 3). It has the appearance of a low cairn with a convex surface and well defined edges. However impromptu probing between the stones indicated that the structure comprised of a single layer of stones situated on a domed sand surface. The evaluation will be carried out to establish the true nature of the structure.

Unless stated below the work will be carried out in accordance with the overarching Written Scheme of Investigation approved by Aberdeenshire County Council in June 2009.

The evaluation will be carried out in stages:

- Initially the area along the edge of the north side of the cairn outside the quadrant to be examined will be excavated to clearly define the edge of the cairn.
- Once the edge has been defined the upper surface of the cairn will be planned at 1:20 and photographed.
- The north quadrant of the cairn (Illus 2) will then be excavated by hand. This excavation will initially be taken down to the level of the original ground surface as defined by the cairn material. As cuts for any burials lying below the original ground surface are likely to be virtually invisible in the sand, sondages will be dug up to 1 m into what is considered to be the original ground surface.
- If part of a cist is revealed sufficient part of it will be excavated to establish orientation.
- If skeletal material survives a 'named' bone will be removed for dating purposes (ie left radius). If the bone is fragile it will be wrapped in aluminium foil and/or bubble wrap before being packaged in a separate cardboard box.
- After the excavation, if a burial was recorded, geotex will be laid over the exposed section prior to back filling. Before the surface is built up the upper surface of the cairn will also be covered with geotex.







Illus 3 Cairn seen from the NW