

Excavate trenches and lay district heating  
mains between existing mains and multi-  
storey blocks, Seaton, Aberdeen



Cameron Archaeology  
29 March 2011

# **Excavate trenches and lay district heating mains between existing mains & multi-storey blocks Bayview Court, Northsea Court, Aulton Court, Beachview Court, Balgownie Court, St.Ninian Court, Inverdon Court and Lords Hays Court, Seaton, Aberdeen**

## **CONTENTS**

1	INTRODUCTION	3
2	ARCHAEOLOGICAL BACKGROUND	4
3	THE WATCHING BRIEF	4
4	DISCUSSION AND RECOMMENDATIONS	11
5	ACKNOWLEDGEMENTS	12
6	REFERENCES	12
	APPENDIX 1 PHOTOGRAPHS	13
	APPENDIX 2 CONTEXTS	17

## **ILLUSTRATIONS**

Cover top location of trenches east of Seaton School showing Beachview court  
Bottom Brick and tile Works dumps F8 and F9

III 1	Location plan	3
III 2	Features associated with brick and Tile Works	5
III 3	Trench excavated through Seaton Pottery site	6
III 4	Trench 1 showing 1.5m domestic refuse	7
III 5	Trench 2 with Seaton School wall (right)	7
III 6	Trench 2 F2 showing brick rubble	8
III 7	Trench 3 brick and tile wasters 3 (centre) and pit F9 (right)	8
III 8	Brick and tile wasters F10	9
III 9	Hand-made brick from F2	9
III 10	Hand-made brick fragment (top) and pantiles (below) from F8	10
III 11	Commutation map of 1860	11

## **SUMMARY**

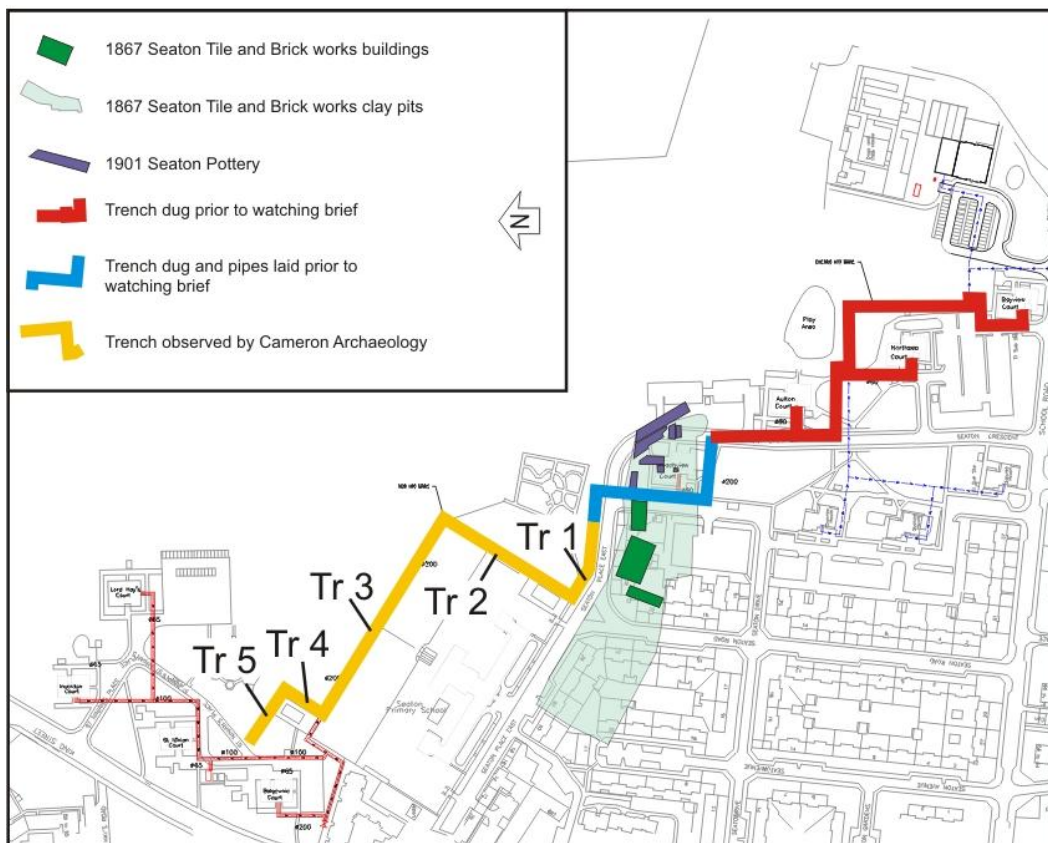
A watching brief was carried out during excavation of trenches for laying heating pipes between Beachview Court and Balgownie Court. Deposits from the Brick and Tile works under what is now Seaton Primary School were recorded and sampled. It is recommended that no further archaeological work is required during this development.

# 1 INTRODUCTION

This report is for works to excavate trenches and lay district heating mains between existing mains and multi-storey blocks Bayview Court, Northsea Court, Aulton Court, Beachview Court, Balgownie Court, St.Ninian Court, Inverdon Court and Lords Hays Court, Seaton, Aberdeen, AB24 1XH, NJ 94557, 08805 at a height of 5-10m OD in the parish of Aberdeen.

The work was commissioned by Bill Rowe, Integrated Energy Utilities on behalf of Aberdeen Heat and Power and the work relates to Aberdeen City Council Planning reference P100670.

The fieldwork was carried out between 1-15 March 2011 in the context of Scottish Planning Policy (SPP) Planning Advice Note 42 (PAN 42) and Scottish Historic Environment Policy (SHEP), which state that archaeological remains should be regarded as part of the environment to be protected and managed.



III 1 Location plan (Contains Ordnance Survey data © Crown copyright and database right 2010)

## 2 ARCHAEOLOGICAL BACKGROUND

The area of this development has had several archaeological interventions. In 2002 and 2003 an archaeological excavation took place at the site of the Seaton Pottery (Ill 1) which stood on the site from 1868-1964 (Cameron 2002, 2003). The excavation showed that the foundations of the buildings are well-preserved and 1.5m down from the current ground surface. Finds included dumps of pottery and kiln furniture greatly adding to what was known about Britain's most northerly industrial Pottery.

A Brick and Tile works and pottery was uncovered during archaeological work prior to the redevelopment of Seaton Primary School in 2009 (Murray 2009). A kiln floor was found on this site as well as dumps of broken ceramic water pipes, bricks and pantiles which may all have been made that the site. This may have been Nicol's Pottery known through a small number of documentary references (Aberdeen SMR).

A small watching brief at the Timber Kinder Nursery (Ill 3) during an extension produced no archaeological deposits.

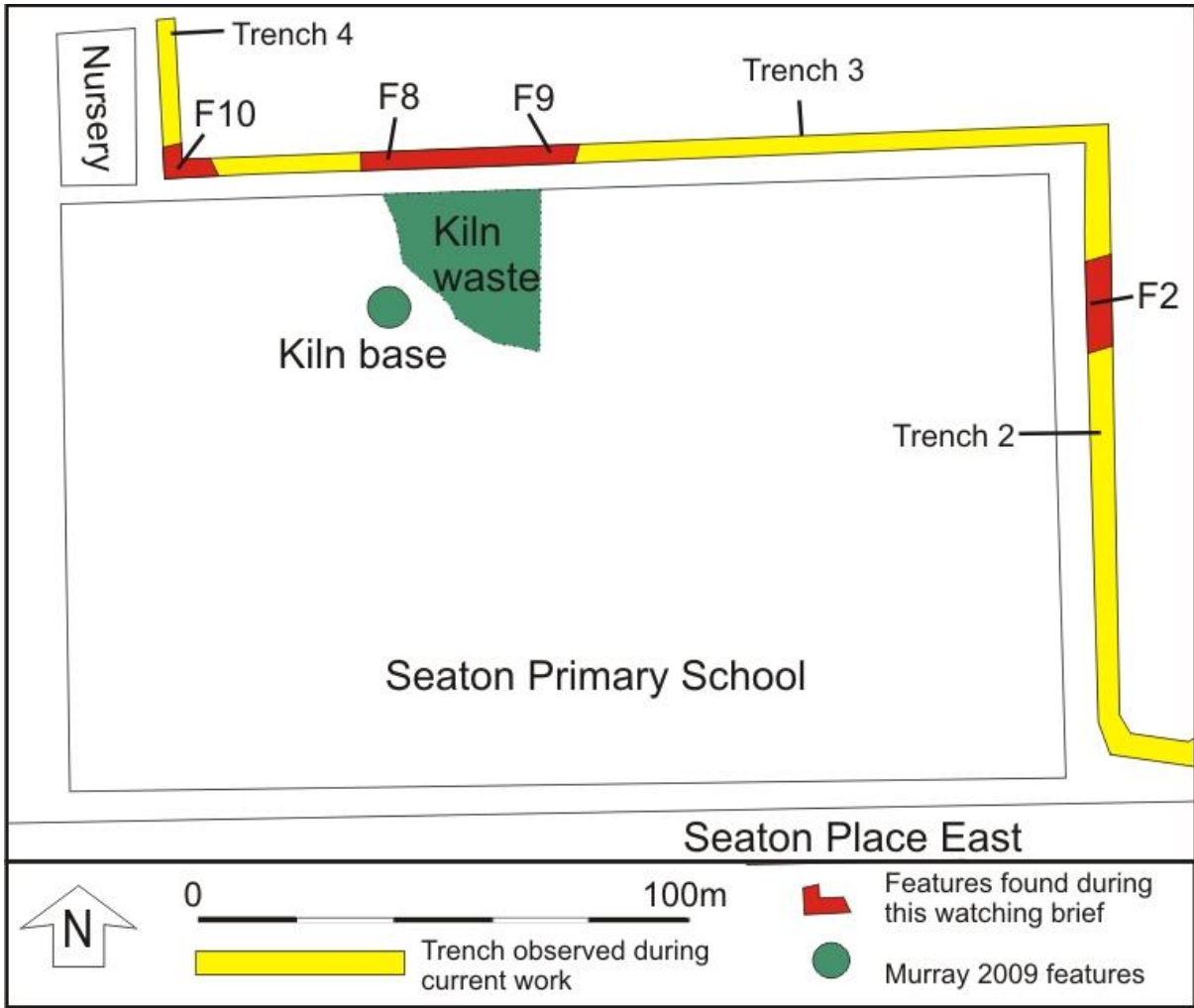
This area of Seaton has been extensively used since at least the 18th century for the extraction of clay from underlying seams and the associated production of clay bricks, tiles and pottery. Brick and tile works were located adjacent to the Seaton Pottery (Ill 1) as well as at Mrs Murray's Cat and Dog Home site.

## 3 THE WATCHING BRIEF

A watching brief was carried out during excavation of trenches for laying heating pipes between Beachview Court and Balgownie Court. Unfortunately prior to an archaeologist being appointed trenches had been dug from Bayview Court to the north of Beachview Court, pipes laid and some trenches backfilled. This included a trench through the Seaton Pottery site which has been previously investigated (Cameron 2002, 2003).

The trenches were dug to 1.5-2m deep and several areas of brick and tile waste were recorded. In the trench east of Seaton School a dump of brick and tile (F2) was found at a depth of 2m below the current ground level. It was recorded but left *in situ* as it did not have to be disturbed for the current development. North of Seaton School an area 6m long contained several pits and dumps of brick and tile waste (F8 and F9) which were sectioned by the trench for the current development. These deposits were sampled and recorded. At the junction of the trench north of the school and east of the Nursery, another dump of brick and tile was sectioned by the current trench.

Trench 1 and the south part of Trench 2 were cut through 1.5m domestic rubbish dumped in the area in the early 20th century. The north of Trench 2 and Trench 3 were cut through dumps of sand and clay probably into old clay pits where clay was extracted for use by the nearby Pottery and Brick and Tile works.



III 2 Features associated with brick and Tile Works





III 3 Trench excavated through Seaton Pottery site





Ill 4 Trench 1 showing 1.5m domestic refuse



Ill 5 Trench 2 with Seaton School wall (right)





Ill 6 Trench 2 F2 showing brick rubble 1.5m below current ground surface



Ill 7 Trench 3 brick and tile wasters 3 (centre) and pit F9 (right)





III 8 Brick and tile wasters F10



III 9 Hand-made brick from F2

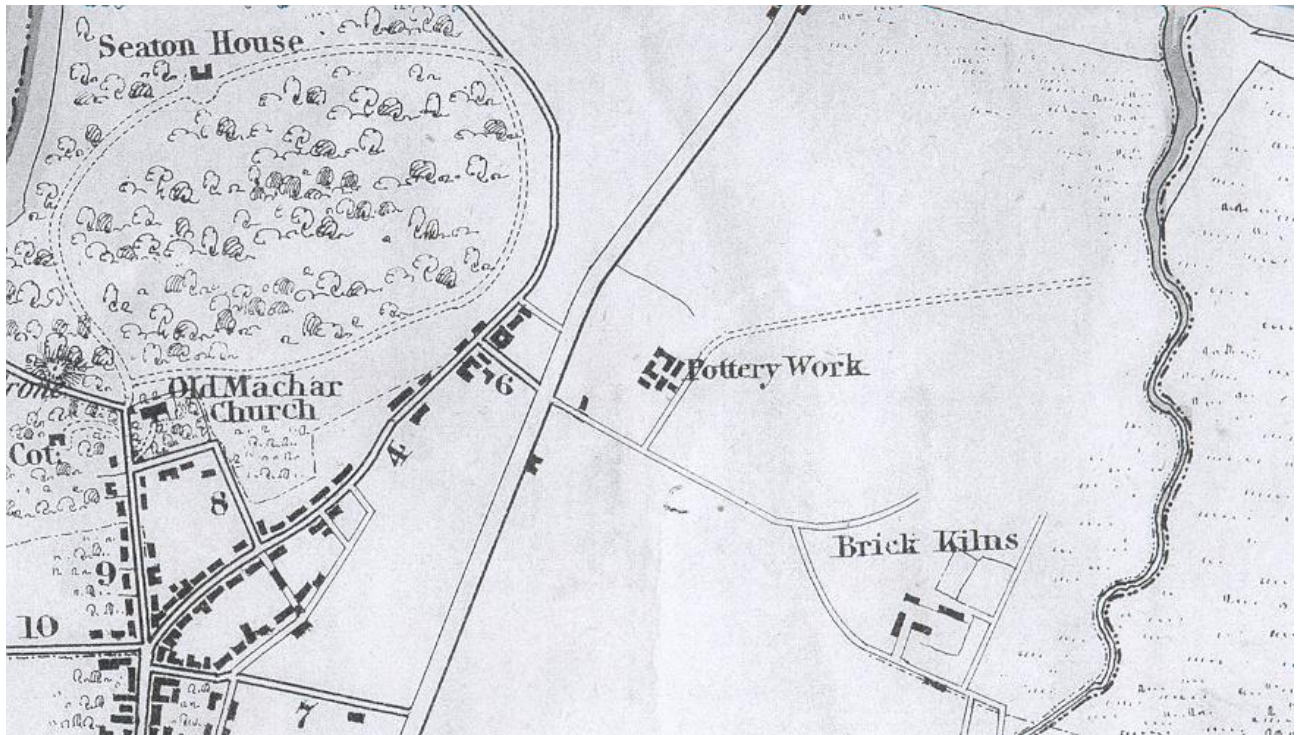


III 10 Hand-made brick fragment (top) and pantiles (below) from F8



## 4 DISCUSSION AND RECOMMENDATIONS

The deposits found during the current watching brief are adjacent to the Brick and Tile Works uncovered in 2009 (Murray 2009; Ill 11) and are probably associated with it. The area surrounding the Brick and Tile works had been heavily quarried for clay extraction and these pits refilled with waster material, sand, clay and to the south of the area, domestic refuse.



Illus 11 Commutation map of 1860 (supplied by City of Aberdeen)

It is recommended that no further archaeological work is required during this current development. The final decision on the archaeological requirements at this site remains with Judith Stones, Aberdeen City Council.

The finds will be deposited with Aberdeen City Council.

## **5 ACKNOWLEDGEMENTS**

Thanks to Bill Rowe, Integrated Energy Utilities; Lyndsey Reid, Allan and other site staff, Turriff; Judith Stones, Aberdeen City Council.

## **6 REFERENCES**

Cameron, A 2002 'Seaton Pottery, Aberdeen City (Aberdeen parish), pottery'. *Discovery and Excavation Scotland*, 7

Cameron, A 2003 'Seaton Pottery, (Aberdeen Parish), industrial pottery', *Discovery and Excavation Scotland*, 12

Murray HK and JC 2009 'Seaton School' , Aberdeen City (Aberdeen parish), pottery'. *Discovery and Excavation Scotland*, 11-12



# APPENDIX 1 PHOTOGRAPHS



DSC\_0365



DSC\_0369



DSC\_0376



DSC\_0377



DSC\_0382



DSC\_0387



DSC\_0396



DSC\_0402



DSC\_0408



DSC\_0409



DSC\_0421



DSC\_0431



DSC\_0433



DSC\_0439



DSC\_0440



DSC\_0449



DSC\_0455



DSC\_0461



DSC\_0466



DSC\_0475



DSC\_0480



DSC\_0489



DSC\_0494



DSC\_0500



DSC\_0506



DSC\_0511



DSC\_0516



DSC\_0522



DSC\_0538



DSC\_0539



DSC\_0540



DSC\_0547



DSC\_0555



DSC\_0560



DSC\_0567



DSC\_0568



DSC\_0575



DSC\_0581



DSC\_0589



DSC\_0590



DSC\_0595



DSC\_0603



DSC\_0608



DSC\_0616



DSC\_0620



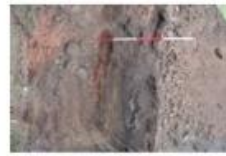
DSC\_0625



DSC\_0630



DSC\_0637



DSC\_0642



DSC\_0647



DSC\_0652



DSC\_0667



DSC\_0668



DSC\_0671



DSC\_0676



DSC\_0681



DSC\_0686



DSC\_0690



DSC\_0700



DSC\_0701



DSC\_0722



DSC\_0732



DSC\_0734



DSC\_0740



DSC\_0747



DSC\_0752



DSC\_0760



DSC\_0765



DSC\_0771



DSC\_0772





PHOTO NO	TR	DESCRIPTION	FACING
DCS_0365		Trench south of Beachview Court	W
DCS_0369		Trench south of Beachview Court	E
DCS_0376		Trench west of Beachview Court	N
DCS_0377		Trench south of Beachview Court	E
DCS_0382		Junction SW of Beachview Court	NW
DCS_0387		Trench west of Beachview Court	N
DCS_0396		Trench west of Beachview Court	N
DCS_0402		Trench NW of Beachview Court showing Seaton Pottery site	SE
DCS_0408		Trench NW of Beachview Court showing cut features	E
DCS_0409		Trench NW of Beachview Court showing Seaton Pottery site	SE
DCS_0421		Trench NW of Beachview Court crossing Seaton Crescent	E
DCS_0431	1	Showing 1.5m domestic refuse accumulation (as was found at Seaton Pottery excavation)	E
DCS_0433	1	Showing 1.5m domestic refuse accumulation (as was found at Seaton Pottery excavation)	E
DCS_0439	1	Showing 1.5m domestic refuse accumulation (as was found at Seaton Pottery excavation)	E
DCS_0440	1	Trench 1 (left) with Beachview Court (right)	ESE
DCS_0449	1	Showing 1.5m domestic refuse accumulation (as was found at Seaton Pottery excavation)	E
DCS_0455	1		E

DCS_0461	1		NW
DCS_0466	1		NW
DCS_0475	1		NW
DCS_0480	1		NW
DCS_0489	1		E
DCS_0494	1		E
DCS_0500	2		N
DCS_0506	2		N
DCS_0511	2	Deeper section where pipes are jointed	SE
DCS_0516	2	Showing 1.5m clay pit fill	N
DCS_0522	2	Beachview Court (left)	S
DCS_0538	2	Beachview Court (left)	S
DCS_0547	1		NW
DCS_0555	2		N
DCS_0560	2		N
DCS_0567	2	Beachview Court (left)	S
DCS_0568	2		S
DCS_0575		Beachview Court with trench location	SSE
DCS_0589	2		E
DCS_0590	2		N
DCS_0595	2		S
DCS_0603	2	showing 1.5m depth of filled clay pits	NNE
DCS_0608	2	showing 1.5m depth of filled clay pits	NNE
DCS_0616	2		N
DCS_0620	2		NNW
DCS_0625	2	F2 1.5-2m below current ground level	SW
DCS_0630	2	F2 1.5-2m below current ground level	S
DCS_0637	2	F2 1.5-2m below current ground level	W
DCS_0642	2	F2 1.5-2m below current ground level	W
DCS_0647	2	F2 1.5-2m below current ground level	NW
DCS_0652	2	Showing location of F2 (ranging rod)	S
DCS_0667	2	Showing location of F2 (ranging rod)	S
DCS_0668	2		WNW
DCS_0671	2	Trench 3 with redeveloped Seaton School	WSW
DCS_0676	2	Trench 3 with redeveloped Seaton School	SW
DCS_0681	2	Trench 3 with redeveloped Seaton School	WSW
DCS_0686	2	North end	W
DCS_0690	2	North end	W
DCS_0700	2	North end	W
DCS_0701	2	North end	S
DCS_0722	2		S
DCS_0732	3		W
DCS_0734	3		S
DCS_0740	3	Deeper section where pipes are jointed	S
DCS_0747	3	Deeper section where pipes are jointed	S
DCS_0752	3		S
DCS_0760	3	F9 (left) F8 (right)	S



DCS_0765	3	F9 (left) F8 (right)	S
DCS_0771	3	F9 (left) F8 (right)	S
DCS_0772	3	Showing location of F8 and F9	E
DCS_0778	3	Showing location of F8 and F9	E
DCS_0783	3	Clay pit infill	S
DCS_0788	3	Clay pit infill	S
DCS_0798	3	F9 (left) F8 (right)	S
DCS_0814	3	F9 (left) F8 (right)	S
DCS_0854	4	east end	SE
DCS_0855	5		S
DCS_0857	5		SW
DCS_0858	5		SW
DCS_0859	5		SE
DCS_0860	5		E
DCS_0861	5		E
DCS_0865	5		W
DCS_0866	5		W
DCS_1023		Brick F2	
DCS_1026		Brick and tile F8	
DCS_9609	5		NNW
DCS_9610	4	F10 brick and tile	SW

## APPENDIX 2 CONTEXTS

Feature	Description
1	Topsoil and turf
F2	Dump of brick and tile east of Seaton School
3	Dump of brick and tile in pit F8
4	Brick and sand waste
5	Black loam in pit F8
6	Sand and brick fragments in pit F8
7	Sand, loam up to 1.5m deep, infilled clay pits
F8	Pit containing dump of brick and tile north of Seaton School
F9	Pit containing soil and brick waste cut through pit F8
F10	Pit filled with brick waste NW of Seaton School