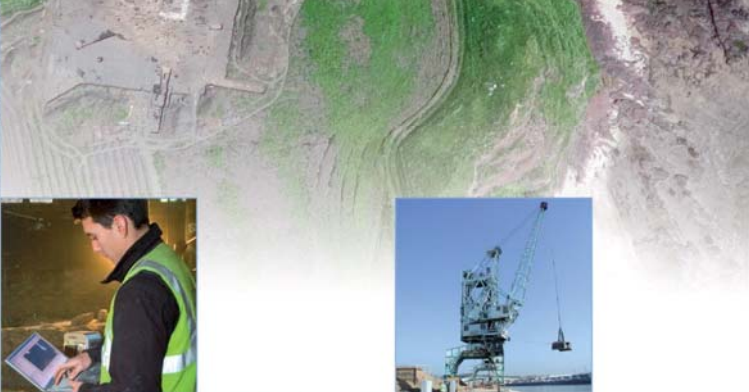
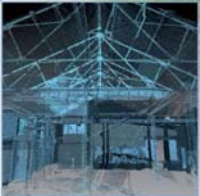


Newbridge, Dumfries Archaeological Evaluation Data Structure Report

AOC 21422
August 2009



ARCHAEOLOGY

HERITAGE

CONSERVATION

Newbridge, Dumfries Archaeological Evaluation: Data Structure Report

On Behalf of: **R & D Construction Group**
C/O Irongray Park
Irongray Road
Dumfries
DG2 0HT

National Grid Reference (NGR): **NX 9502 7872**

AOC Project No: **21422**

Prepared by: **Martin Cook**

Illustration by: **Graeme Cavers and Douglas Park**

Date of Fieldwork: **August 2009**

Date of Report: **August 2009**

This document has been prepared in accordance with AOC standard operating procedures.

Author: Martin Cook

Date: 27th August 2009

Approved by: John Gooder

Date: 27th August 2009

Draft Report Stage:

Date: 27th August 2009

Enquiries to: AOC Archaeology Group
Edgefield Industrial Estate
Edgefield Road
Loanhead
EH20 9SY

Tel. 0131 440 3593
Fax. 0131 440 3422
e-mail. admin@aocarchaeology.com



www.aocarchaeology.com

Contents

	Page
List of illustrations	3
List of plates	3
List of appendices	Error! Bookmark not defined.
Abstract.....	4
0 Non Technical Summary	5
1 Introduction.....	5
1.1 Site Location	5
1.2 Development proposal	5
1.3 Archaeological background.....	5
1.4 Curatorial control.....	6
2 Objectives.....	7
3 Method.....	7
4 Results.....	7
4.1 Introduction	7
4.2 Overview	8
4.3 Enclosure (Figure 2).....	8
4.4 Isolated Features (Figure 2).....	10
5 DISCUSSION	11
6 RECOMMENDATIONS	11
7 REFERENCES	12
APPENDIX 1: TRENCH SUMMARIES.....	13
APPENDIX 2: PHOTOGRAPHIC REGISTER	24
APPENDIX 3: CONTEXT REGISTER	25
APPENDIX 4: SAMPLE REGISTER	25
APPENDIX 5: DRAWING REGISTER.....	25
APPENDIX 6: DISCOVERY AND EXCAVATION IN SCOTLAND REPORT	26

List of illustrations

- | | |
|----------|--|
| Figure 1 | Site location |
| Figure 2 | Plan showing position of trenches within evaluation area |
| Figure 3 | Plan showing features within Trenches 32 and 33 |
| Figure 4 | General Figure showing plans and sections of features |
| Figure 5 | Zone of archaeological sensitivity overlain on development proposals |

List of plates

- | | |
|---------|---|
| Plate 1 | Cropmark enclosure (<i>NMRS NX97NW49</i>) |
| Plate 2 | Detail of palisade enclosure [107] |
| Plate 3 | Detail of ring-groove [103] |
| Plate 4 | Detail of pit [101] |

Abstract

A programme of archaeological works was required by R & D Construction Group in respect to a proposed housing development at Newbridge, Dumfries. The proposed development consists of a greenfield site covering c 12.044 ha. The proposed development lies within the administrative area of Dumfries and Galloway Council, which is advised on archaeological matters by Ms. Jane Brann. A programme of archaeological works was required in keeping with the policies outlined in SPP23 (2008) and PAN42 (1994), in order to record the extent and significance of any archaeological remains which may be present within the development area.

An 8% sample of the development area equated to trenching totalling 9,635 m². In total 65 trenches totalling 9635 m² were excavated. The majority of the trenches contained no archaeological features and only a few artefacts were identified from the topsoil. However, archaeological features were identified in four trenches, a previously known enclosure and associated internal features, and two isolated features.

0 Non Technical Summary

- 0.1 A programme of archaeological works was required by R & D Construction Group in respect to a proposed housing development at Irongray Road, Newbridge, Dumfries. The proposed development consisted of a greenfield site covering c 12.044 ha. The proposed development lies within the administrative area of Dumfries and Galloway Council, which is advised on archaeological matters by Ms. Jane Brann. A programme of archaeological works was required in keeping with the policies outlined in SPP23 (2008) and PAN42 (1994), in order to record the extent and significance of any archaeological remains which may be present within the development area.

1 Introduction

1.1 Site Location

- 1.1.1 The proposed development area is presently a greenfield site centred on NGR: NX 9502 7872. It is bounded to the south-west by Irongray Road and to the north-east by Glasgow Road. The surrounding landscape is a mix of open fields, domestic housing development and a technology park (Figure 1).

1.2 Development proposal

- 1.2.1 The development involves the creation of a phased housing development together with associated access roads and landscaping.

1.3 Archaeological background

- 1.3.1 A prehistoric enclosure site appears inside the development area as a cropmark site (*NMRS* NX97NW49; Plate 1) lying to the immediate south-east of existing buildings situated along the south-western boundary of the development area as formed by Irongray Road. The enclosure lies at NGR: NX 9494 7866 and is described in the National Monument Record as a cropmark revealed by aerial photographs taken by the Irish Gas Board in 1991 as part of work in advance of the gas pipeline from Scotland to Ireland (visible on air photograph Bord Gais Eireann AF/91/Col/ 50, run 4, 3029; 8 May 1991). The cropmark is also visible on RAF air photographs of 1946 (seen on RAF air photographs 106G/Scot/UK145 3320-1 1946). The site was allegedly visible as a slight earthwork in the early 1990s.
- 1.3.2 There have also been reports of linear features lying within the development area that are only visible in low sun conditions (Andrew Nicholson pers com).
- 1.3.3 The enclosure site (*NMRS* NX97NW49) will not be impacted upon by groundworks associated with the development proposals as it is being left as open ground. However there remains the possibility of associated archaeological material surviving as sub-surface features invisible to non-intrusive archaeological investigation. In addition, as the development area has remained relatively free of modern development, there persisted the enhanced possibility of encountering entirely disassociated

archaeological material that is unknown in the historic, cartographic, aerial photographic or archaeological records.



Plate 1: Cropmark enclosure (NMRS NX97NW49)

1.4 Curatorial control

- 1.4.1 National planning policies and planning guidance, SPP23 (2008) and PAN42 (SOEnD 1994a), as well as the local plan policies, require a mitigation response that is designed to investigate the potential for archaeological sites within the development area and thence allow the preservation or recording of any significant remains.
- 1.4.2 The site is located within the Local Authority administrative area of Dumfries and Galloway Council. The Council is advised on archaeological matters by Ms. Jane Brann. A programme of evaluation works that fully met the advice rendered by Ms. Jane Brann was undertaken.

2 Objectives

2.1 The objectives of the archaeological works were:

- i) to determine the character, extent, condition, quality, date and significance of any buried archaeological remains within the development area through a 8% field evaluation;
- ii) whilst the over-riding aim of the development was to provide information allowing preservation *in situ* of specifically identified archaeological sites, the evaluation was also designed to inform a mitigation scheme involving an appropriate form of mitigation, such as excavation, post-excavation analyses and publication, should further, less significant archaeological remains be encountered.

3 Method

3.1 The Written Scheme of Investigation (Dunbar 2009) proposed the excavation of trenches equating to an 8% sample of the development area. The site covered approximately c 12.044 ha resulting in evaluation trenching with a total basal area of 9635 m² (Figure 2). The 64 trenches excavated correspond to a little over the 8% sample specified in the Written Scheme of Investigation (Dunbar 2009).

3.2 All trenches were excavated with a 13 tonne tracked excavator using a 2.0 m wide ditching bucket. The trench details are summarised in Appendix 1. Machine excavation was conducted in shallow units/spits through topsoil/overburden to the upper surface of the underlying geological deposits. The evaluation trial trenching was undertaken according to AOC Archaeology Group's standard operating procedures as detailed with the Method Statement (Dunbar 2009).

4 Results

4.1 Introduction

4.1.1 The works were conducted between 3rd August and 12th August 2009. The weather conditions during the evaluation were mixed, dry and sunny in parts with heavy showers. Overall archaeological visibility was good. In total 64 trenches were opened totalling 9635 m² (Figure 2).

4.1.2 The various data gathered from the excavation are presented as a series of appendices:

Appendix 1 contains trench summaries;

Appendix 2 contains the photographic register;

Appendix 3 contains the sample register;

Appendix 4 contains the drawing register;

Appendix 5 reproduces the *Discovery & Excavation in Scotland* entry.

4.2 Overview

4.2.1 The proposed development was covered in a layer of dark brown silty topsoil, which varied in depth from 0.20 m to 0.41 m in depth according to the topography of the land. The deeper areas of topsoil tended to occur in the low points of the field, particularly in north-east of Field 2. The deep areas of topsoil were downslope and can be viewed as accumulated hillwash. The topsoil varied across the site between a loose sand and gravel to a more compact silty clay material. Unusually, there was no evidence of plough scarring on the surface of the subsoil, perhaps indicating that the field had not been subject to modern ploughing techniques. No evidence for drainage, either modern or historic was identified in the form of field drains.

4.2.2 Outwith the palisade enclosure and associated features (NMRS NX97NW49; Plate 1), the remainder of the site appears to be relatively archaeologically sterile, although isolated features were identified within Trenches 22 and 29.

4.3 Enclosure (Figure 2)

4.3.1 Trenches 32 and 33 were excavated across the known location of a prehistoric enclosure (NMRS NX97NW49; Plate 1). While the original mitigation proposed a single trench was excavated across the site (Dunbar 2009), a secondary trench was added to help confirm its presence.



Plate 2: Detail of enclosure palisade [107] (NMRS NX97NW49)

4.3.2 The enclosure was identified in three places ([107], [109], [111]; Figure 3 and Plate 2), and comprised a single, slot measuring 0.30-0.40 m in width and up to 0.24 m in depth. The cut of the feature contained steep sides running in to a rounded base. The feature was filled by a single fill ([108], [110] and [112]) comprising a dark brown sandy matrix with frequent inclusions of angular and rounded stones. No artefactual material was recovered from the feature. In total, the enclosure would have measured approximately 27 m by 27 m (Figure 2). Analogy with known, excavated examples suggests the enclosure constituted a palisade slot, made of timber posts, held tight with a deposit of packing stones (Cook 2006).



Plate 3: Detail of ring-groove [103]

4.3.3 Two probable ring-grooves (103) and [113]) were identified within the boundaries of the enclosure, and although not stratigraphically linked, it seems likely they are associated and contemporary. Ring-groove [103] was identified in Trench 33 only, and comprised a curvilinear slot, 10 m in length by 0.35-0.45 m in width by 0.10 m in depth. The cut was filled by a single fill [104], a dark sandy matrix with frequent inclusions of rounded and angular stones. The size of the identified slot suggests that

the ring-groove would have measured up to 12-14 m in diameter. Towards the upper size limit of this class of feature. No artefactual material was recovered from the feature.

- 4.3.4 Ring-groove [113] was identified within Trench 33 and comprised only a 2 m section. The feature measured 0.18-0.24 m in width by up to 0.11 m in depth and was filled by a single deposit [114] of a dark brown compact sandy silt. No artefactual material was recovered from the feature.

4.4 Isolated Features (Figure 2)

- 4.4.1 Two isolated features ([101] and [105]) were identified and excavated in Trenches 22 and 29. Both features were fully excavated and recorded during the evaluation.
- 4.4.2 Pit [101] was identified at the southern end of Trench 29 (Plate 3). On identification a 6 m by 4 m box was opened around the pit in an attempt to define its full plan and to confirm the presence or absence of any associated features. No other features were identified. The pit was sub-rounded in plan with steep sides running in to a rounded base and measured 0.90 m by 0.80 m by up to 0.40 m in depth. The single fill [102] comprised a loose sandy silt with a large amount of rounded and angular stone inclusions, charcoal and possibly a few flecks of burnt bone. No artefactual material was recovered from the feature and no associated features were observed in the immediate area.
- 4.4.3 Feature [105] comprised a north to south aligned linear cut identified in Trench 22. The cut measured 1.1 m in width by up to 0.40 m in depth and contained a single fill [106] of dark brown sandy matrix with numerous gravel inclusions. No artefactual material was recovered from the feature.



Plate 4: Detail of pit [101]

5 DISCUSSION

- 5.1 The evaluation trenching at Newbridge, Dumfries has confirmed the presence of the enclosure previously identified from aerial photography. Although clearly truncated and of a less robust character than suggested by the aerial photography, the remnants of the enclosure were identified in three places. Perhaps more importantly, the evaluation recorded two internal ring-grooves. The presence of the ring-grooves suggests that the site contained at least two individual roundhouses, demonstrating a probable residential function for the site. Although no artefactual material was recovered the remains can be provisionally identified as a later prehistoric (later Bronze Age or Iron Age) palisaded enclosure and associated ring groove roundhouses. The enclosure would appear to have been compromised by the modern buildings to the west.
- 5.2 Other than the enclosure and associated ring grooves the development area proved archaeologically sterile apart from two features (a pit and linear) both isolated, absent of artefacts and functionally undiagnostic.

6 RECOMMENDATIONS

- 6.1 The evaluation has revealed that the overwhelming majority of the development area is free from any significant archaeological features; however around the central/southern edge of the development there is a discrete but important suite of prehistoric features. This zone of archaeological sensitivity is illustrated as Figure 5.
- 6.2 In line with current planning policy the preservation *in situ* of the archaeological material is the preferred option. However if the preservation of the archaeology *in situ* proves infeasible a further programme of archaeological mitigation works (*preservation by record*) comprising excavation fieldwork and any necessary post-excavation works will be required. Thus it is recommended that a mitigation strategy be prepared compliant with SPP 23 and PAN 42.
- 6.3 SPP 23 states that

'archaeological resources shall be preserved in situ wherever feasible. The planning authority will weigh the significance of the archaeological resources and of any impacts upon them and their settings against other merits of the development proposals in the determination of planning application'

- 6.4 Ideally the development proposals should be amended to avoid impacting on the on the archaeologically sensitive area as identified by the evaluation. Indeed the greater part of this area is already included as *Active Open Space* within the development proposals (Figure 5) as a result of the previously known presence of the archaeological site, if not the site's full character and form. The enclosure is wholly located within this *Active Open Space*, where there are no significant ground impacts deriving from the development proposals, and thus will be preserved *in situ* in its entirety.

- 6.5 In the archaeologically sensitive area immediately outwith the enclosure, the development proposals entail access road construction, house building and the laying of ground to gardens. Given the possibility of the nearby survival of archaeological material associated with the enclosure, we would advise that an appropriate form of mitigation would be the undertaking of an archaeological watching brief on the ground-works contractor's topsoil stripping works in the peripheral zone of the archaeologically sensitive area.
- 6.6 These recommendations must be view as being provisional. Ultimately, the scope and scale of the any further archaeological works would be defined by Dumfries and Galloway Council; with the detailed methodology for their undertaking set out in a further Written Scheme of Investigation.

7 REFERENCES

Cook, M 2006 'Excavations of a Bronze Age Roundhouse and Associated Palisaded Enclosure at Aird Quarry, Castle Kennedy, Dumfries and Galloway' in the Transactions of the Dumfries and Galloway Natural History and Antiquarian Society, Volume LXXVI, 2006

Dunbar, L. 2009 Newbridge, Dumfries Archaeological Evaluation Written Scheme of Investigation AOC Archaeology Client Report

SPP23 2008 *Scottish Planning Policy SPP23. Archaeology and Planning*. Nov.2008.

SOEnD 1994a Planning Advice Note 42. Archaeology – the Planning Process and Scheduled Ancient Monument Procedures. The Scottish Office Environment Department.

APPENDIX 1: TRENCH SUMMARIES

Trench 1

Dimensions	137 m by 2.0 m
Orientation	NE - SW
Depth of Topsoil	0.27 m to 0.34 m
Features	None
Subsoil	Pink sandy soil, with large stone inclusions
Finds	Unstratified 20 th century glazed pottery noted within topsoil

Trench 2

Dimensions	136 m by 2.0 m
Orientation	N - S
Depth of Topsoil	0.27 m to 0.36 m
Features	None
Subsoil	Orange gravel
Finds	Unstratified 20 th century glazed pottery noted within topsoil

Trench 3

Dimensions	134 m by 2.0 m
Orientation	E - W
Depth of Topsoil	0.28 m to 0.42 m
Features	None
Subsoil	Orange gravel
Finds	Unstratified 20 th century glazed pottery noted within topsoil

Trench 4

Dimensions	110 m by 2.0 m
Orientation	N - S
Depth of Topsoil	0.28 m to 0.34 m
Features	None
Subsoil	Orange gravels and sands
Finds	Unstratified 20 th century glazed pottery noted within topsoil.

Trench 5

Dimensions	100 m by 2.0 m
Orientation	NW - SE
Depth of Topsoil	0.26 m to 0.29 m
Features	None
Subsoil	Sandy matrix
Finds	Unstratified 20 th century glazed pottery noted within topsoil

Trench 6

Dimensions	76 m by 2.0 m
Orientation	E - W
Depth of Topsoil	0.26 m to 0.29 m
Features	None
Subsoil	Sandy matrix
Finds	Unstratified 20 th century glazed pottery noted within topsoil

Trench 7

Dimensions	152 m by 2.0 m
Orientation	NE - SW
Depth of Topsoil	0.27 m to 0.28 m
Features	None
Subsoil	Orange gravel
Finds	Unstratified 20 th century glazed pottery noted within topsoil

Trench 8

Dimensions	101 m by 2.0 m
Orientation	NE - SW
Depth of Topsoil	0.36 m to 0.41 m
Features	None
Subsoil	Orange gravels and sands
Finds	Unstratified 20 th century glazed pottery noted within topsoil.

Trench 9

Dimensions	178 m by 2.0 m
Orientation	NE - SW
Depth of Topsoil	0.32 m to 0.41 m
Features	None
Subsoil	Sandy gravel
Finds	Unstratified 20 th century glazed pottery noted within topsoil

Trench 10

Dimensions	125 m by 2.0 m
Orientation	NW - SE
Depth of Topsoil	0.21 m to 0.33 m
Features	None
Subsoil	Orange gravel
Finds	Unstratified 20 th century glazed pottery noted within topsoil

Trench 11

Dimensions	50 m by 2.0 m
Orientation	NW - SE
Depth of Topsoil	0.26 m to 0.27 m
Features	None
Subsoil	Orange gravel
Finds	Unstratified 20 th century glazed pottery noted within topsoil

Trench 12

Dimensions	157 m by 2.0 m
Orientation	N - S
Depth of Topsoil	0.29 m to 0.32 m
Features	None
Subsoil	Orange sands and gravels
Finds	Unstratified 20 th century glazed pottery noted within topsoil

Trench 13

Dimensions	61 m by 2.0 m
------------	---------------

Orientation	E - W
Depth of Topsoil	0.30 m to 0.31 m
Features	None
Subsoil	Orange gravel
Finds	Unstratified 20 th century glazed pottery noted within topsoil

Trench 14

Dimensions	156 m by 2.0 m
Orientation	N - S
Depth of Topsoil	0.31 m to 0.33 m
Features	None
Subsoil	Orange gravel
Finds	Unstratified 20 th century glazed pottery noted within topsoil

Trench 15

Dimensions	48 m by 2.0 m
Orientation	E - W
Depth of Topsoil	0.28 m to 0.31 m
Features	None
Subsoil	Orange gravels and sands
Finds	Unstratified 20 th century glazed pottery noted within topsoil

Trench 16

Dimensions	36 m by 2.0 m
Orientation	E - W
Depth of Topsoil	0.32 m to 0.41 m
Features	None
Subsoil	Orange gravel
Finds	Unstratified 20 th century glazed pottery noted within topsoil

Trench 17

Dimensions	156 m by 2.0 m
Orientation	NW - SE
Depth of Topsoil	0.26 m to 0.29 m
Features	None
Subsoil	Orange gravel
Finds	Unstratified 20 th century glazed pottery noted within topsoil

Trench 18

Dimensions	55 m by 2.0 m
Orientation	NW - SE
Depth of Topsoil	0.29 m to 0.30 m
Features	None
Subsoil	Orange gravel
Finds	Unstratified 20 th century glazed pottery noted within topsoil

Trench 19

Dimensions	92 m by 2.0 m
Orientation	NW - SE
Depth of Topsoil	0.32 m to 0.41 m

Features	None
Subsoil	Orange gravel
Finds	Unstratified 20 th century glazed pottery noted within topsoil

Trench 20

Dimensions	81 m by 2.0 m
Orientation	E - W
Depth of Topsoil	0.31 m to 0.33 m
Features	None
Subsoil	Orange gravel
Finds	Unstratified 20 th century glazed pottery noted within topsoil

Trench 21

Dimensions	92 m by 2.0 m
Orientation	NW - SE
Depth of Topsoil	0.26 m to 0.29 m
Features	None
Subsoil	Orange gravel
Finds	Unstratified 20 th century glazed pottery noted within topsoil

Trench 22

Dimensions	33 m by 2.0 m
Orientation	NW - SE
Depth of Topsoil	0.32 m to 0.41 m
Features	Pit [105]
Subsoil	Orange gravel
Finds	Unstratified 20 th century glazed pottery noted within topsoil
Finds	Unstratified 20 th century glazed pottery noted within topsoil.

Trench 23

Dimensions	38 m by 2.0 m
Orientation	E - W
Depth of Topsoil	0.31 m to 0.33 m
Features	None
Subsoil	Sands and gravels
Finds	Unstratified 20 th century glazed pottery noted within topsoil

Trench 24

Dimensions	20 m by 2.0 m
Orientation	NE - SW
Depth of Topsoil	0.32 m to 0.41 m
Features	None
Subsoil	Gravels and sands
Finds	Unstratified 20 th century glazed pottery noted within topsoil

Trench 25

Dimensions	26 m by 2.0 m
Orientation	NE - SW
Depth of Topsoil	0.32 m to 0.34 m
Features	None

Subsoil Gravels
Finds Unstratified 20th century glazed pottery noted within topsoil

Trench 26

Dimensions 18 m by 2.0 m
Orientation NE - SW
Depth of Topsoil 0.34 m to 0.35 m
Features None
Subsoil Orange gravel
Finds Unstratified 20th century glazed pottery noted within topsoil

Trench 27

Dimensions 46 m by 2.0 m
Orientation E - W
Depth of Topsoil 0.37 m to 0.39 m
Features None
Subsoil Orange gravel
Finds Unstratified 20th century glazed pottery noted within topsoil
Finds Unstratified 20th century glazed pottery noted within topsoil.

Trench 28

Dimensions 65 m by 2.0 m
Orientation NE - SW
Depth of Topsoil 0.34 m to 0.35 m
Features None
Subsoil Gravels
Finds Unstratified 20th century glazed pottery noted within topsoil

Trench 29

Dimensions 96 m by 2.0 m
Orientation NE - SW
Depth of Topsoil 0.32 m to 0.41 m
Features Large pit, [101]
Subsoil Orange/grey gravel
Finds Unstratified 20th century glazed pottery noted within topsoil

Trench 30

Dimensions 50 m by 2.0 m
Orientation NE - SW
Depth of Topsoil 0.32 m to 0.41 m
Features None
Subsoil Gravel
Finds Unstratified 20th century glazed pottery noted within topsoil
Finds Unstratified 20th century glazed pottery noted within topsoil.

Trench 31

Dimensions 77 m by 2.0 m
Orientation E - W
Depth of Topsoil 0.32 m to 0.41 m
Features None

Subsoil Gravel
Finds Unstratified 20th century glazed pottery noted within topsoil

Trench 32

Dimensions 71 m by 2.0 m
Orientation N - S
Depth of Topsoil 0.34 m to 0.35 m
Features None
Subsoil Orange gravel and sand
Finds Unstratified 20th century glazed pottery noted within topsoil

Trench 33

Dimensions 70 m by 2.0 m
Orientation NE - SW
Depth of Topsoil 0.20 m to 0.25 m
Features Ring-groove [103] plus enclosure
Subsoil Gravel
Finds Unstratified 20th century glazed pottery noted within topsoil

Trench 34

Dimensions 50 m by 2.0 m
Orientation NW - SE
Depth of Topsoil 0.32 m to 0.33 m
Features None
Subsoil Orange gravel
Finds Unstratified 20th century glazed pottery noted within topsoil

Trench 35

Dimensions 90 m by 2.0 m
Orientation E - W
Depth of Topsoil 0.20 m to 0.30 m
Features None
Subsoil Orange gravel
Finds Unstratified 20th century glazed pottery noted within topsoil

Trench 36

Dimensions 85 m by 2.0 m
Orientation E - W
Depth of Topsoil 0.28 m
Features None
Subsoil Gravel
Finds Unstratified 20th century glazed pottery noted within topsoil

Trench 37

Dimensions 140 m by 2.0 m
Orientation N - S
Depth of Topsoil 0.28 m to 0.30 m
Features None
Subsoil Gravel
Finds Unstratified 20th century glazed pottery noted within topsoil

Trench 38

Dimensions	50 m by 2.0 m
Orientation	E - W
Depth of Topsoil	0.20 m
Features	None
Subsoil	Gravel
Finds	Unstratified 20 th century glazed pottery noted within topsoil

Trench 39

Dimensions	50 m by 2.0 m
Orientation	E - W
Depth of Topsoil	0.30 m to 0.32 m
Features	None
Subsoil	Gravel
Finds	Unstratified 20 th century glazed pottery noted within topsoil

Trench 40

Dimensions	50 m by 2.0 m
Orientation	E - W
Depth of Topsoil	0.25 m
Features	None
Subsoil	Gravel
Finds	Unstratified 20 th century glazed pottery noted within topsoil

Trench 41

Dimensions	50 m by 2.0 m
Orientation	E - W
Depth of Topsoil	0.25 m
Features	None
Subsoil	Gravel
Finds	Unstratified 20 th century glazed pottery noted within topsoil

Trench 42

Dimensions	50 m by 2.0 m
Orientation	E - W
Depth of Topsoil	0.25 m
Features	None
Subsoil	Red silt and sand
Finds	Unstratified 20 th century glazed pottery noted within topsoil

Trench 43

Dimensions	50 m by 2.0 m
Orientation	E - W
Depth of Topsoil	0.253 m to 0.25 m
Features	None
Subsoil	Gravel
Finds	Unstratified 20 th century glazed pottery noted within topsoil

Trench 44

Dimensions	60 m by 2.0 m
Orientation	NE - SW
Depth of Topsoil	0.25 m
Features	None
Subsoil	Red silt
Finds	Unstratified 20 th century glazed pottery noted within topsoil

Trench 45

Dimensions	109 m by 2.0 m
Orientation	N - S
Depth of Topsoil	0.20 m to 0.23 m
Features	None
Subsoil	Red silt
Finds	Unstratified 20 th century glazed pottery noted within topsoil

Trench 46

Dimensions	70 m by 2.0 m
Orientation	E - W
Depth of Topsoil	0.25 m
Features	None
Subsoil	Gravel
Finds	Unstratified 20 th century glazed pottery noted within topsoil

Trench 47

Dimensions	60 m by 2.0 m
Orientation	E - W
Depth of Topsoil	0.25 m to 0.28 m
Features	None
Subsoil	Gravel
Finds	Unstratified 20 th century glazed pottery noted within topsoil

Trench 48

Dimensions	115 m by 2.0 m
Orientation	N - S
Depth of Topsoil	0.25 m
Features	None
Subsoil	Gravel
Finds	Unstratified 20 th century glazed pottery noted within topsoil

Trench 49

Dimensions	65 m by 2.0 m
Orientation	E - W
Depth of Topsoil	0.22 m
Features	None
Subsoil	Gravel
Finds	Unstratified 20 th century glazed pottery noted within topsoil

Trench 50

Dimensions	45 m by 2.0 m
Orientation	E - W

Depth of Topsoil	0.25 m
Features	None
Subsoil	Gravel
Finds	Unstratified 20 th century glazed pottery noted within topsoil

Trench 51

Dimensions	50 m by 2.0 m
Orientation	NE - SW
Depth of Topsoil	0.23 m
Features	None
Subsoil	Gravel
Finds	Unstratified 20 th century glazed pottery noted within topsoil

Trench 52

Dimensions	70 m by 2.0 m
Orientation	NE - SW
Depth of Topsoil	0.25 m
Features	None
Subsoil	Gravel
Finds	Unstratified 20 th century glazed pottery noted within topsoil

Trench 53

Dimensions	65 m by 2.0 m
Orientation	NE - SW
Depth of Topsoil	0.22 m
Features	None
Subsoil	Gravel
Finds	Unstratified 20 th century glazed pottery noted within topsoil

Trench 54

Dimensions	65 m by 2.0 m
Orientation	NE - SW
Depth of Topsoil	0.23 m
Features	None
Subsoil	Gravel
Finds	Unstratified 20 th century glazed pottery noted within topsoil

Trench 55

Dimensions	65 m by 2.0 m
Orientation	NE - SW
Depth of Topsoil	0.25 m
Features	None
Subsoil	Gravel
Finds	Unstratified 20 th century glazed pottery noted within topsoil

Trench 56

Dimensions	65 m by 2.0 m
Orientation	E - W
Depth of Topsoil	0.23 m to 0.25 m
Features	None

Subsoil Gravel
Finds Unstratified 20th century glazed pottery noted within topsoil

Trench 56a

Dimensions 125 m by 2.0 m
Orientation N - S
Depth of Topsoil 0.20 m to 0.22 m
Features None
Subsoil Gravel
Finds Unstratified 20th century glazed pottery noted within topsoil

Trench 57

Dimensions 70 m by 2.0 m
Orientation E - W
Depth of Topsoil 0.21 m to 0.22 m
Features None
Subsoil Gravel
Finds Unstratified 20th century glazed pottery noted within topsoil

Trench 58

Dimensions 100 m by 2.0 m
Orientation N - S
Depth of Topsoil 0.22 m to 0.25 m
Features None
Subsoil Gravel
Finds Unstratified 20th century glazed pottery noted within topsoil

Trench 59

Dimensions 70 m by 2.0 m
Orientation E - W
Depth of Topsoil 0.23 m to 0.25 m
Features None
Subsoil Gravel
Finds Unstratified 20th century glazed pottery noted within topsoil

Trench 60

Dimensions 70 m by 2.0 m
Orientation E - W
Depth of Topsoil 0.21 m to 0.25 m
Features None
Subsoil Gravel
Finds Unstratified 20th century glazed pottery noted within topsoil

Trench 61

Dimensions 70 m by 2.0 m
Orientation E - W
Depth of Topsoil 0.23 m to 0.25 m
Features None
Subsoil Gravel
Finds Unstratified 20th century glazed pottery noted within topsoil

Trench 62

Dimensions	70 m by 2.0 m
Orientation	E - W
Depth of Topsoil	0.23 m to 0.25 m
Features	None
Subsoil	Gravel
Finds	Unstratified 20 th century glazed pottery noted within topsoil

Trench 63

Dimensions	15 m by 2.0 m
Orientation	E - W
Depth of Topsoil	0.23 m to 0.25 m
Features	None
Subsoil	Gravel
Finds	Unstratified 20 th century glazed pottery noted within topsoil

Trench 64

Dimensions	65 m by 2.0 m
Orientation	E - W
Depth of Topsoil	0.23 m to 0.25 m
Features	None
Subsoil	Gravel
Finds	Unstratified 20 th century glazed pottery noted within topsoil

APPENDIX 2: PHOTOGRAPHIC REGISTER

Black & White Print & Colour Slide Film 1

Frame	Area	Detail	From
1-2	-	Registration	
3-4	Tr.29	West-facing section through pit [101]	W
5-6	Tr.32	Detail of ring-groove [103]	NE
7-8	Tr.32	Detail of ring-groove [103]	SW
9-10		Detail of linear cut [105]	N
11-13		General view of Field A	SW
14-15	Tr.33	Detail of palisade [107]	W
16-17	Tr.32	Detail of possible palisade [109]	N
18-19	Tr.32	Detail of possible palisade [111]	N
20-23	Tr.32	Detail of ring-groove [113]	N
24-25	Tr.32	Detail of ring-groove [103]	E
26-27	Tr.32	Detail of ring-groove [103]	SE
28-29	Tr.32	Detail of ring-groove [103]	NW
30		General view of trenches	SW
31		General view of trenches	W
32		General view of trenches	NW

Digital Record

Frame	Area	Detail	From
1	-	Registration	
2	Tr.29	West facing section through pit [101]	W
3	Tr.32	Detail of ring-groove [103]	NE
4	Tr.32	Detail of ring-groove [103]	SW
4		Detail of linear cut [105]	N
6		General view of Field A	SW
7	Tr.33	Detail of palisade [107]	W
8	Tr.32	Detail of possible palisade [109]	N
9	Tr.32	Detail of possible palisade [111]	N
10	Tr.32	Detail of ring-groove [113]	N
11	Tr.32	Detail of ring-groove [103]	E
12	Tr.32	Detail of ring-groove [103]	SE
13	Tr.32	Detail of ring-groove [103]	NW
14		General view of trenches	SW
15		General view of trenches	W
16		General view of trenches	NW

APPENDIX 3: CONTEXT REGISTER

Context No.	Area	Description
[101]	Tr.29	Cut of isolated pit, sub-rounded in plan, with steep sides running in to a rounded base. Measuring 0.90 m by 0.80 m by 0.40 m in depth. Single fill [102].
[102]	Tr.29	Fill of pit [101], with loose sandy silt and a large amount of stone inclusions of up to 0.30 m by 0.30 m in size and charcoal.
[103]	Tr.33	Cut of ring-groove of roundhouse, approximately 12-14 m in diameter. The slot measures 0.35-0.45 m in width by at least 0.10 m in depth. Unexcavated. Filled by [104]
[104]	Tr.33	Fill of ring-groove comprising dark brown matrix with lots of rounded and angular stones with some charcoal flecks. Unexcavated.
[105]	Tr.22	Cut of linear feature, aligned NE-SW across the trench, comprising straight sides running in to a rounded base. Measuring 1.1 m by up to 0.40 m in depth. Filled by [106].
[106]	Tr.22	Fill of ditch cut [105], comprising a dark brown sandy matrix with numerous gravel inclusions.
[107]	Tr.33	Cut of circular palisade slot, measuring 0.40 m by 0.35 m and up to 0.24 m in depth. Filled by [108]
[108]	Tr.33	Fill of [107] comprising a dark brown sandy matrix with lots of stone inclusions.
[109]	Tr.32	Cut of palisade slot, measuring 0.30-0.40 m in width. Same as [107] and [111]. Unexcavated.
[110]	Tr.32	Fill of [110], same as [108].
[111]	Tr.32	Cut of palisade slot, measuring 0.30-0.40 m in width. Same as [107] and [109]. Unexcavated.
[112]	Tr.32	Fill of [111], same as [108] and [110].
[113]	Tr.32	Possible cut of ring-groove, measuring 0.18-0.24 m in width and up to 0.11 m in depth. Filled by [114].
[114]	Tr.32	Fill of [113], comprising dark brown compact sandy silt.

APPENDIX 4: SAMPLE REGISTER

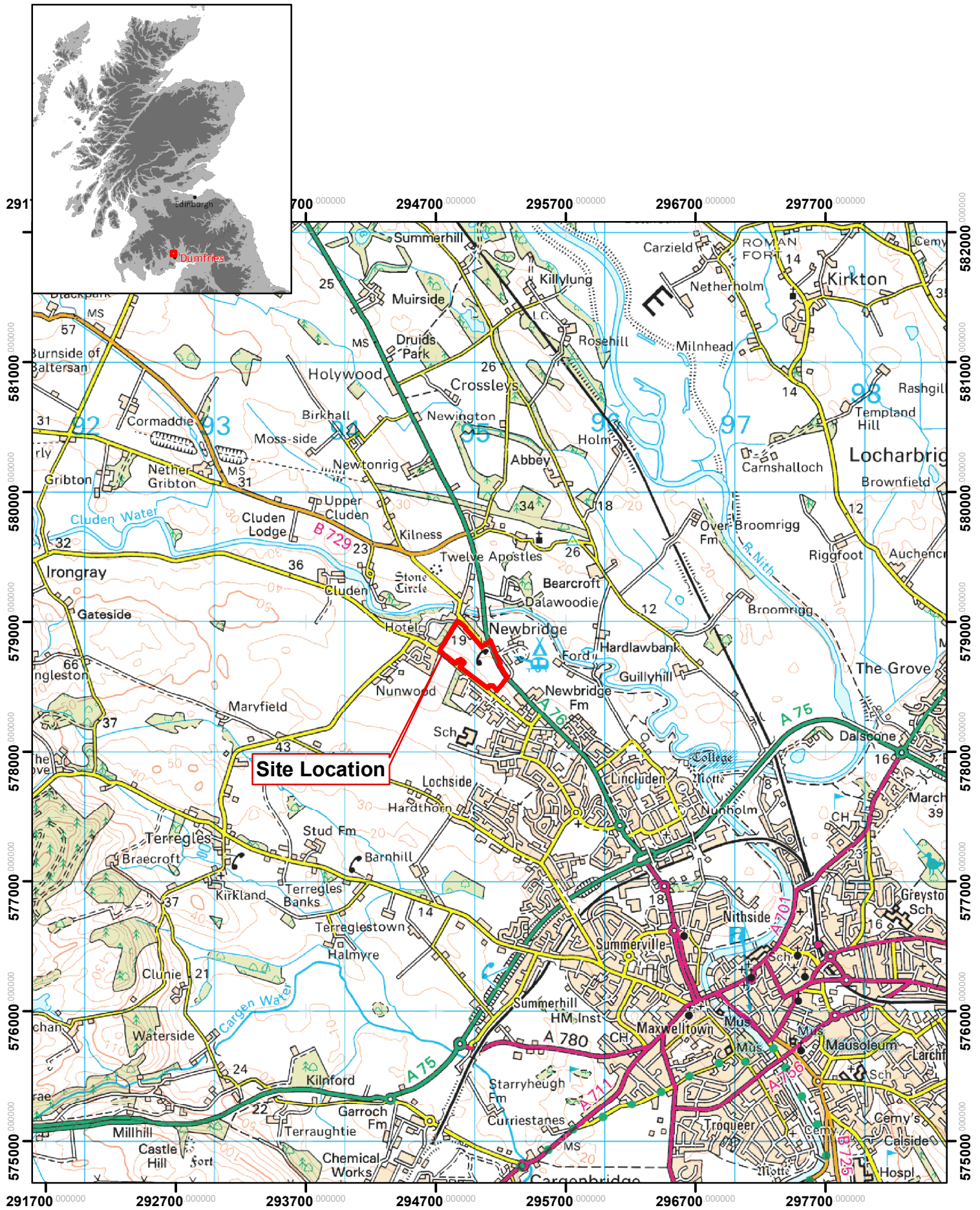
Trench Context	Quantity
Tr. 29	[102] 1 Bucket

APPENDIX 5: DRAWING REGISTER

Drawing No	Description	Scale
1	West-facing section through pit [101]	1:20
2	Plan of pit [101]	1:20
3	North-facing section through pit [105]	1:20
4	Plan of ring-groove [103]	1:20
5	Plan of palisade [111]	1:20
6	NW-facing section through ring-groove [113]	1:20
7	Plan of palisade [109]	1:20
8	South-facing section through palisade [107]	1:20

APPENDIX 6: DISCOVERY AND EXCAVATION IN SCOTLAND REPORT

LOCAL AUTHORITY:	Dumfries and Galloway Council
PROJECT TITLE/SITE NAME:	Newbridge, Dumfries Archaeological Evaluation
PROJECT CODE:	AOC 21422
PARISH:	Terregles
NAME OF CONTRIBUTOR:	Martin Cook
NAME OF ORGANISATION:	AOC Archaeology Group
TYPE(S) OF PROJECT:	Archaeological Evaluation
NMRS NO(S):	NMRS NX97NW49
SITE/MONUMENT TYPE(S):	None
SIGNIFICANT FINDS:	None
NGR (2 letters, 6 figures)	NX 9501 7822
START DATE (this season)	3 rd August 2009
END DATE (this season)	12 th August 2009
PREVIOUS WORK (incl. DES ref.)	None
MAIN DESCRIPTION: (NARRATIVE) (May include information from other fields)	<p>An evaluation was undertaken prior to a proposed housing development at Irongray Road, Newbridge, Dumfries. The proposed development consisted of a greenfield site covering c. 12.044 ha.</p> <p>An 8% sample of the development area equated to 64 trenches totalling 9635 m². The majority of the trenches contained no archaeological features and only a few artefacts were identified from the topsoil.</p> <p>A known prehistoric enclosure (NMRS NX97NW49) was identified and recorded in two trenches in the southern part of the development area. The enclosure was confirmed to comprise a circular palisade slot, with previously unrecorded ring-grooves in the interior. The features were left unexcavated, but their size and nature would suggest a later prehistoric origin. Two isolated features were also recorded and excavated in the northern and central parts of the development area; these comprised a linear cut and a pit. No artefacts were recovered.</p>
PROPOSED FUTURE WORK:	None
CAPTION(S) FOR ILLUSTRS:	n/a
SPONSOR OR FUNDING BODY:	R & D Construction Group
ADDRESS OF MAIN CONTRIBUTOR:	C/o AOC Archaeology Group
EMAIL ADDRESS:	Martin.Cook@aocarchaeology.com



0 210 420 840 1,260 1,680 Meters

Figure 1: Site Location



© AOC Archaeology 2009

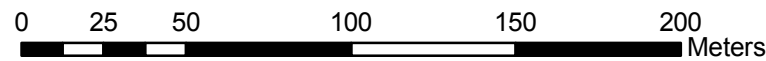
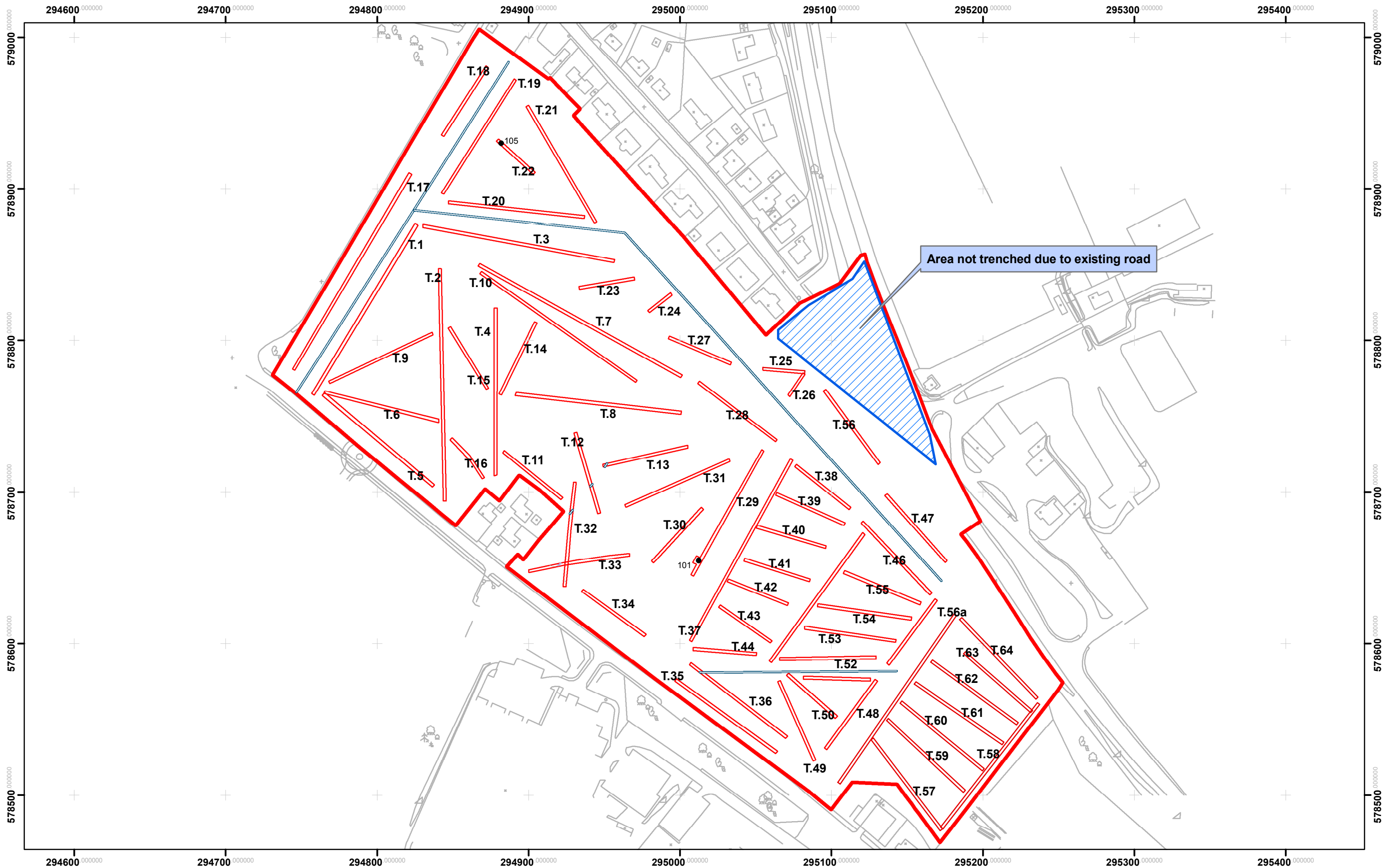


Figure 2: Trench Layout

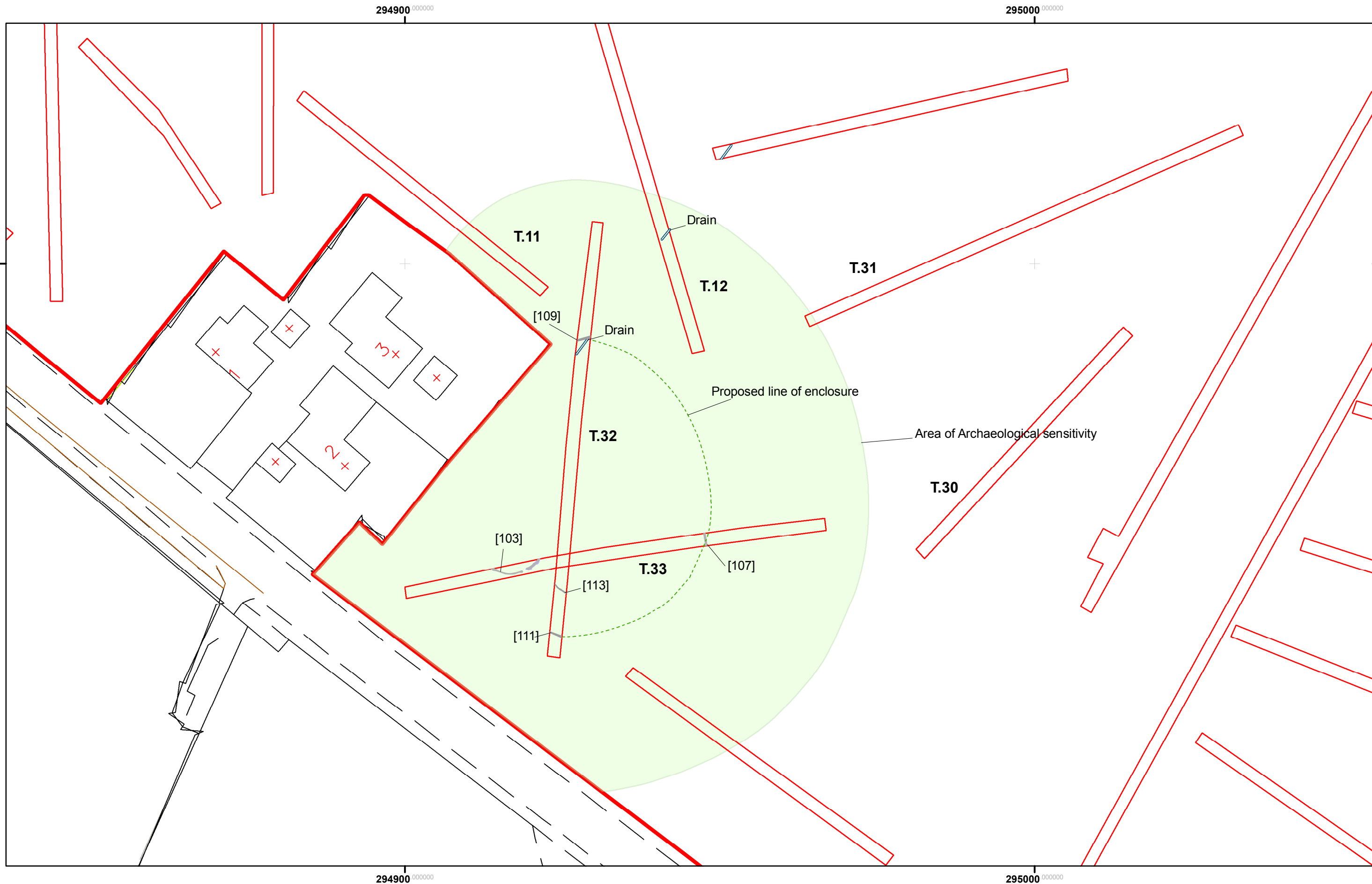
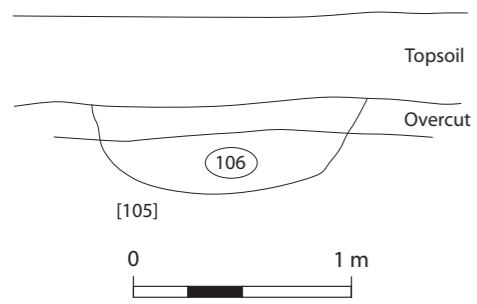


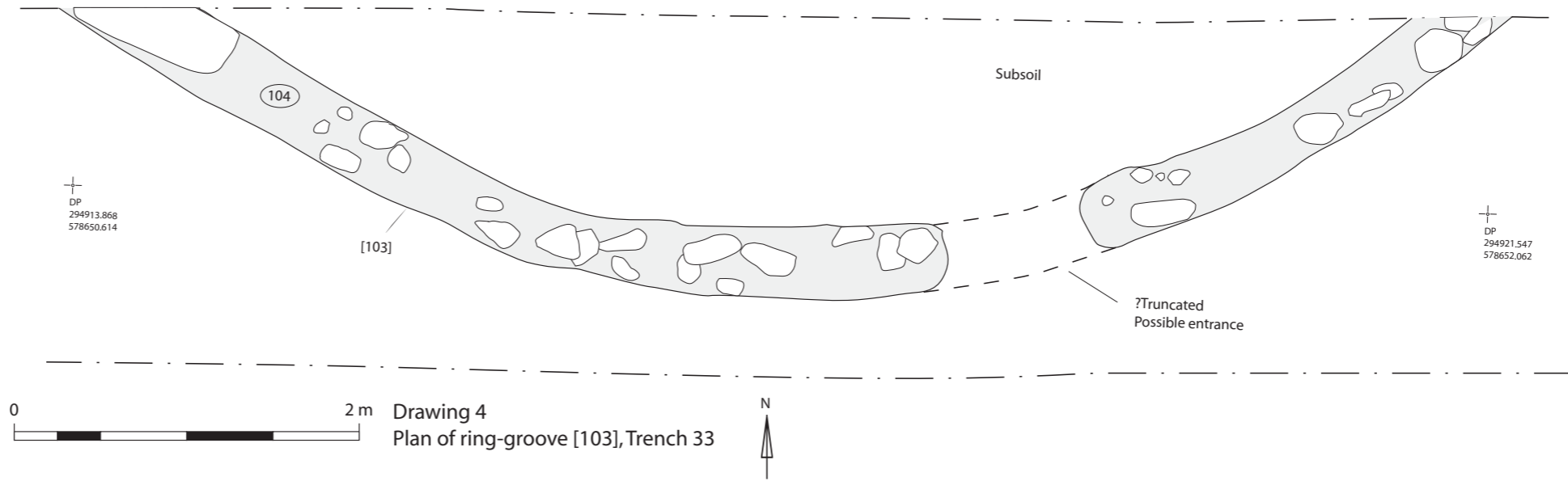
Figure 3: Location of palisade and ring groove in Trenches 32 and 33



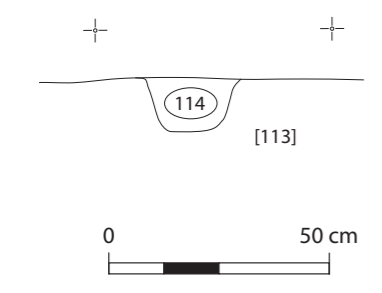
0 3 6 12 18 24 Meters



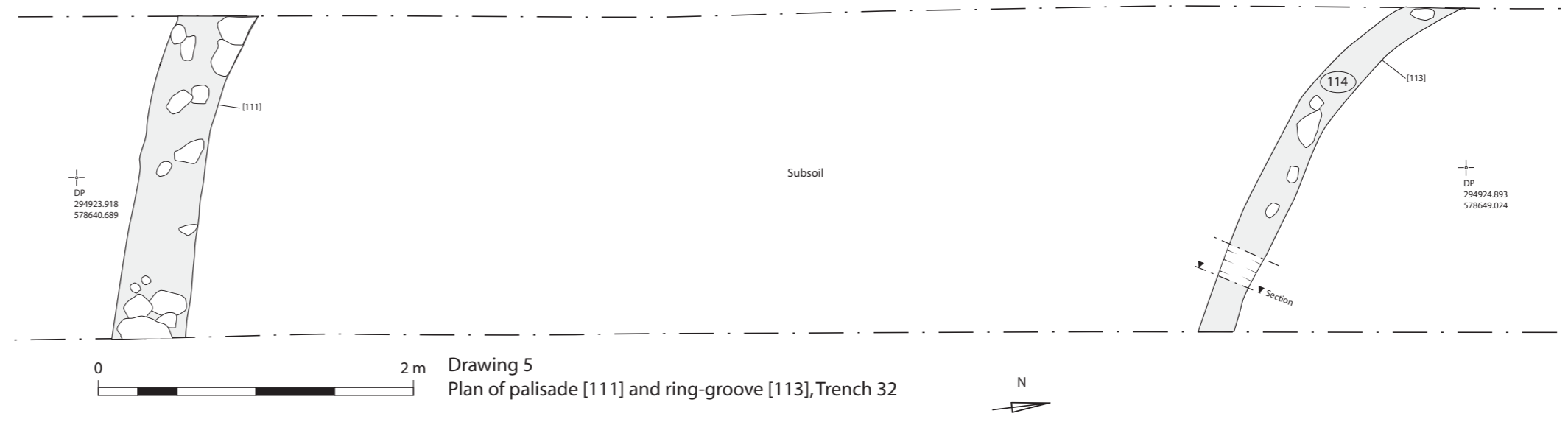
Drawing 3
Section through linear [105], Trench 22



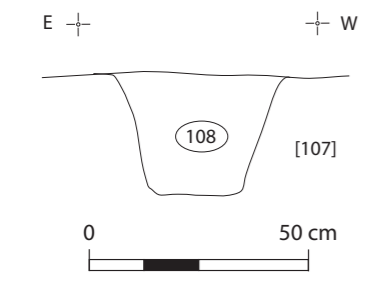
Drawing 4
Plan of ring-groove [103], Trench 33



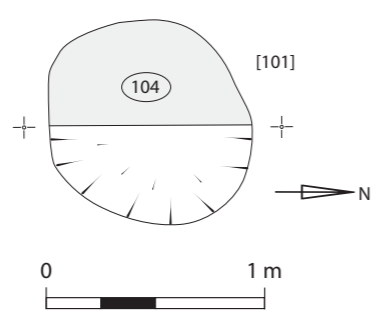
Drawing 8
Section through palisade [107], Trench 32



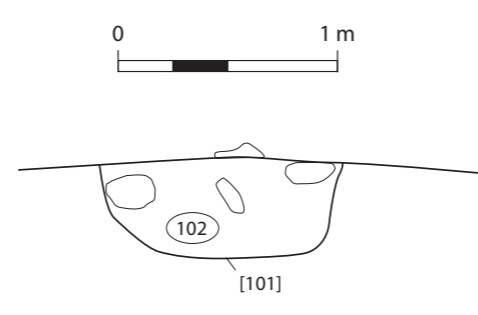
Drawing 5
Plan of palisade [111] and ring-groove [113], Trench 32



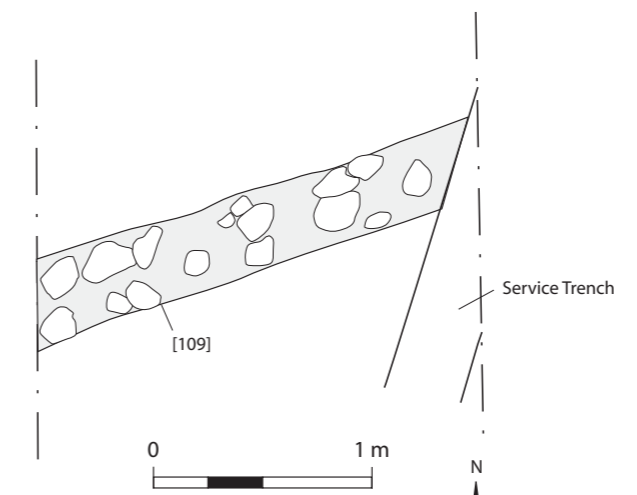
Drawing 8
NW-facing section through [113], Trench 33



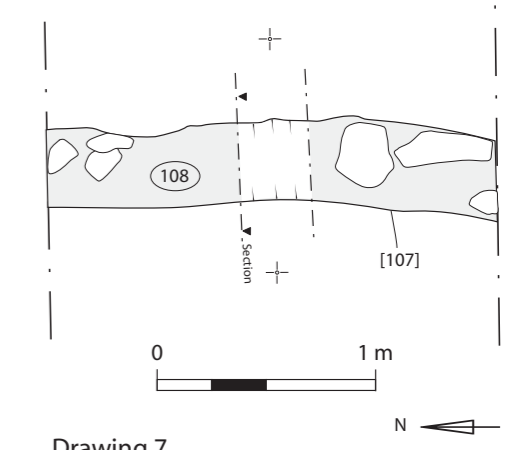
Drawing 2
Plan of pit [101], Trench 29



Drawing 1
Section through pit [101], Trench 29

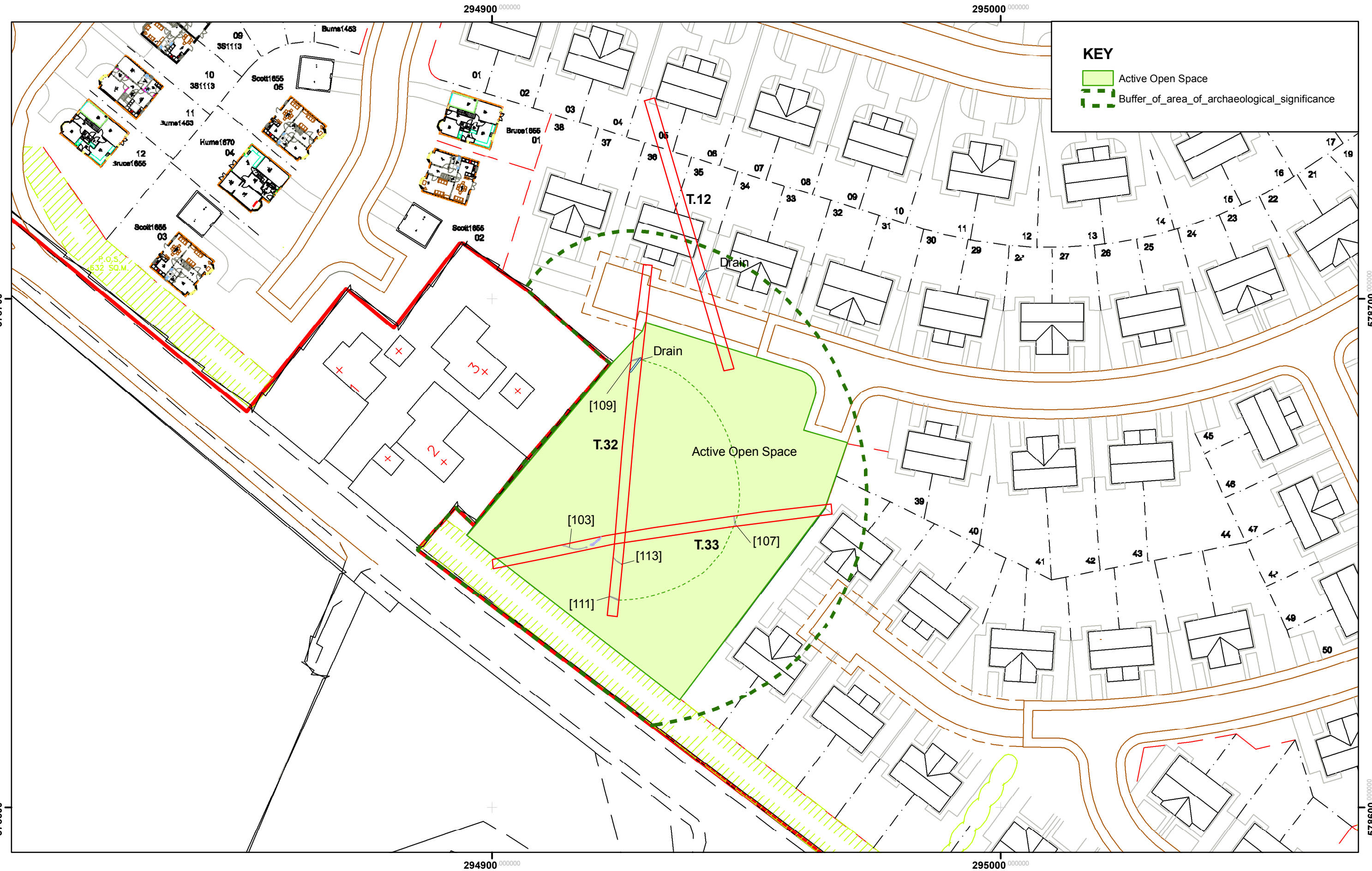


Drawing 5
Plan of palisade [109], Trench 32



Drawing 7
Plan of palisade [107], Trench 33

Figure 4: Plan and sections of excavated features



0 3.757.5 15 22.5 30 Meters

Figure 5: Zone of Archaeological Sensitivity superimposed on Development Plan



AOC Archaeology Group, Edgefield Industrial Estate, Edgefield Road, Loanhead EH20 9SY
tel: 0131 440 3593 | fax: 0131 440 3422 | e-mail: edinburgh@aocarchaeology.com

www.aocarchaeology.com