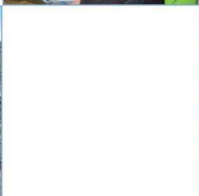
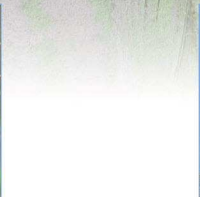
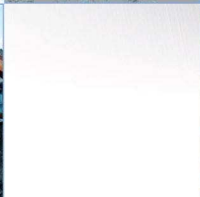
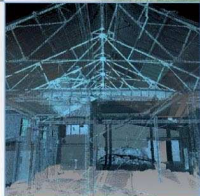


Elgin Business Park, Phase 1: Evaluation Data Structure Report OASIS No.

AOC Archaeology Project No. 22357



ARCHAEOLOGY

HERITAGE

CONSERVATION

Elgin Business Park, Phase 1: Evaluation Data Structure Report

On Behalf of:	Springfield Properties Pentland House, Grampian Road, Elgin, IV301XJ
National Grid Reference (NGR):	NJ 2448 6196
AOC Project No:	AOC 21581
Prepared by:	Jake Streatfeild-James
Illustration by:	Jake Streatfeild-James
Date of Fieldwork:	11th – 16th February 2013
Date of Report:	February 2013

This document has been prepared in accordance with AOC standard operating procedures.

Author: Jake Streatfeild-James

Date: 21st February 2013

Approved by: Martin Cook

Date: 22nd February 2013

Draft/Final Report Stage: Draft

Date: 22nd February 2013

Enquiries to: AOC Archaeology Group
Edgefield Industrial Estate
Edgefield Road
Loanhead
EH20 9SY

Tel. 0131 440 3593
Fax. 0131 440 3422
e-mail. edinburgh@aocarchaeology.com

Contents

	Page
List of illustrations	2
List of appendices.....	2
Abstract.....	3
1 INTRODUCTION	4
2 OBJECTIVES.....	4
3 METHOD.....	5
4 RESULTS.....	5
5 DISCUSSION	7
6 RECOMMENDATIONS	7
7 REFERENCES	8
APPENDIX 1: Trench Descriptions	10
APPENDIX 2: Photographic Register	18
APPENDIX 3: Context Register	19
APPENDIX 4: Sample Register	19
APPENDIX 5: Drawing Register	20
APPENDIX 6: ' <i>Discovery and Excavation in Scotland</i> ' Report.....	22

List of illustrations

Figure 1: Site location

Figure 2: Trench layout

List of plates

Plate 1: General view of open trenches

Plate 2: South facing section through pit [1001]

Abstract

This report presents the results of an archaeological evaluation undertaken by AOC Group in February 2013, over land adjacent to a recognised cropmark site. The evaluation revealed a single large pit of indeterminate date, with no finds or other significant archaeological material recovered.

1 INTRODUCTION

1.1 Development Background

- 1.1.1 A programme of archaeological works was required by Springfield Properties PLC in respect to a proposed industrial development at the site of the new Elgin Business Park on the eastern side of Elgin, Moray (centred NGR: NJ 2448 6196, Figure 1). The planned development consists of an extensive greenfield site covering approximately 26 ha. The site lies within the administrative area of Moray Council, which is advised on archaeological matters by Aberdeenshire Council Archaeology Service (ACAS). A programme of archaeological works was required in keeping with the policies outlined in *Scottish Planning Policy* (Scottish Government 2010) and PAN 2/2011 (Scottish Government 2011) in order to record the extent and significance of any archaeological remains which may be present within the development area.

1.2 Archaeological Background

- 1.2.1 In their response to the Clients planning application, covering both Phases 1 and 2 ACAS commented that:

“The application occurs within and adjacent to the regionally important archaeological site of NJ26 SW0055, as well as within the prehistoric and medieval cropmark site of NJ26 SW 0054. Owing to the nature of the archaeology of NJ26 SW 0054, where preservation in situ instead of mitigation has been considered, it should be noted that further evaluation work beyond the standard 7 – 10% will be required prior to the development.” Moray Council 2011, 8

- 1.2.2 An examination of records held by both the National Monument Record Scotland and Aberdeenshire Council’s Sites and Monument Record shows that although no archaeological remains or artefacts are known from the Phase 1 development area, extensive cropmarks indicative of a series of sub rectangular enclosures, linears (NMRS NJ26SW 135), a possible souterrain (NMRS 26SW 86), rig and furrow cultivation and a moated site (NMRS NJ26SW 84) are known within the field immediately west of the Phase 1 site, which will form Phase 2 of the development. Further cropmarks indicative of rectangular enclosures and roundhouses have also been identified within the field immediately east of the Phase 1 site (ACAS NJ 26SE 0161).
- 1.2.3 A settlement or residence marked ‘*Barmuckity*’ recorded on Pont’s map of 1783-96 (Gordon 23), Bleau 1654 and ‘*Braemuckity*’ on Roy’s military survey of the Highlands of 1747-52, may represent the moated site known from cropmark evidence within the Phase 2 development area. Settlement had shifted to the site of the present farm by the time of the 1st edition 25 inch to the mile of 1870, published in 1874.

2 OBJECTIVES

- 2.1 The objectives of the archaeological works are:
- i) to determine the character, extent, condition, quality, date and significance of any buried archaeological remains within the proposed development area;

- ii) to advise and implement an appropriate form of archaeological mitigation, such as excavation, post-excavation analyses and publication, should significant archaeological remains be encountered that cannot be preserved *in situ*.

3 METHOD

- 3.1 The evaluation was achieved through the excavation of linear trenches using two tracked 360° excavators equipped with a 2.1 m wide ditching buckets. The original evaluation was based on a 7-10 % sample of a 7.9 ha site. However, an error during the initial set up led to the area being miscalculated. The area was actually 36 ha in size. Following consultation with Mr Bruce Mann of the ACAS, the proposed evaluation was altered to take account of this error, to accommodate utility services, flooded and boggy areas and the buffer zone for the main Inverness to Aberdeen rail line. In total 10 ha was unavailable for evaluation. Ultimately trenching with a combined total basal area of 11,256 m² was achieved (Figure 3).
- 3.2 Excavation was undertaken in shallow units/spits until the first significant archaeological horizon or natural drift geology was reached. All machine excavation was supervised by an experienced field archaeologist. All potentially significant archaeological features were cleaned and defined prior to sample excavation to determine their significance.

4 RESULTS

4.1 Evaluation results

- 4.1.1 The evaluation was conducted between 11th February and 16th February 2013. The weather conditions during the evaluation were mostly dry with some showers and snow, overall archaeological visibility was good. In total 47 trenches, with a combined basal area of 11,256 m², were excavated (Figure 3).
- 4.1.2 The various data gathered from the excavation are presented as a series of appendices:
 - Appendix 1: trench summary descriptions;
 - Appendix 2: photographic register;
 - Appendix 3 context register;
 - Appendix 4 sample register;
 - Appendix 5 drawing register;
 - Appendix 6 reproduces the '*Discovery & Excavation in Scotland*' entry.
- 4.1.3 The topsoil depth across the development area varied hugely, between 0.20 and 1.6 m deep, depending on the local topography. It overlay natural subsoil comprising orange/yellow sands, clays and gravels with occasional large patches of gleying and manganese percolation.



Plate 1: General view of open trenches

- 4.1.4 A single system of field drains was visible across the site, running SE-NW across the N slope towards the low ground around the A96. The drain tracks had been excavated down to the subsoil, while the drains themselves were of a round terracotta type common across Scotland.



Plate 2: South facing section through pit [1001]

- 4.1.5 A single pit was revealed at the E end of trench 1; an area was subsequently opened around this feature, but no other anthropogenic activity was obvious in a surrounding 8 m by 8 m box. The feature was sub-circular in plan 1.95 metres across and 0.60m deep; upon excavation, was revealed to have steep sides and a roughly flat base [1001]. The feature comprised three main fills: a primary fill of mid yellow-brown silty sand [1002], then a large lens of natural yellow-orange sand 0.15m deep [1003] and lastly a darker brown silty sand [1004]. No anthropogenic material was recovered from the fills.

5 DISCUSSION

- 5.1 The initial evaluation showed that the majority of the site was archaeologically sterile, with only a single feature recognised in 11,256 square metres of trenching. Pit [1001] remains undated, but may represent a short phase of prehistoric activity, and it should be noted that there is a widespread tradition of isolated pit-digging in the north-east of Scotland during the Neolithic (Cook & Dunbar, 2008; Cameron, 2002).
- 5.2 As the vast majority of trenched areas showed no trace of archaeological features or artefacts, the balance of probability suggests that the site is archaeologically sterile.

6 RECOMMENDATIONS

6.1 Evaluation results

- 6.1.1 Generally, the evaluation area was sterile of archaeological features, reflecting both the poor quality of the land, as well as the heavy ploughing that has affected the area in the last few decades.
- 6.1.2 A feature of archaeological significance was identified during the works. In an attempt to identify any associated features the immediate surrounding area was excavated. However, no further features were identified and it is likely that this was an isolated pit. Therefore no further on site archaeological works are considered necessary. This will require confirmation by Mr Bruce Mann of ACAS.

7 REFERENCES

AOC 2013, Elgin Business Park, Written Scheme of Investigation. Unpublished Client Report.

Cook, M & Dunbar, L 2008 *Rituals, Roundhouses and Romans: Excavations at Kintore, Aberdeenshire 2000-2006, Volume 1*, Loanhead, Star Publishing

Cameron, K (2002) "The Excavation of Neolithic Pits and Iron Age Souterrains at Dubton Farm, Brechin, Angus" in *Tayside and Fife Archaeology Journal*, 8 19-76

Scottish Government 2010 Scottish Planning Policy. (February 2010)

Scottish Government 2011 Planning Advice Note 2/2011: Planning and Archaeology

Elgin Business Park, Phase 1: Evaluation Data Structure Report

Section 2: Appendices

APPENDIX 1: Trench Descriptions

Trench 1

<i>Dimensions</i>	440 m x 2.0 m and a 10x10 m extension
<i>Orientation</i>	NW-SE
<i>Depth of Topsoil</i>	0.50 m to 0.80 m
<i>Features</i>	None
<i>Significant Features</i>	420m from NW end - A large circular feature [1001] 2m across and 0.65m deep. Three fills: (1002) (1003) (1004)
<i>Subsoil</i>	Orange sand and gravel
<i>Finds</i>	None

Trench 2

<i>Dimensions</i>	150 m x 2.0 m
<i>Orientation</i>	E-W
<i>Depth of Topsoil</i>	0.40 m to 0.70 m
<i>Features</i>	Drain NE-SW at 5, 12, 22, 26m Rubble Drain at 125m
<i>Significant Features</i>	None
<i>Subsoil</i>	Orange sand and gravel
<i>Finds</i>	None

Trench 3

<i>Dimensions</i>	100 m x 2.0 m
<i>Orientation</i>	NW-SE
<i>Depth of Topsoil</i>	0.38 m to 0.72 m
<i>Features</i>	None
<i>Significant Features</i>	None
<i>Subsoil</i>	Sand and gravel
<i>Finds</i>	None

Trench 4

<i>Dimensions</i>	70 m x 2.0 m
<i>Orientation</i>	E-W
<i>Depth of Topsoil</i>	0.60 m to 0.71 m
<i>Features</i>	None
<i>Significant Features</i>	None
<i>Subsoil</i>	Orange sands and gravels
<i>Finds</i>	None

Trench 5

<i>Dimensions</i>	100 m x 2.0 m
<i>Orientation</i>	N-S
<i>Depth of Topsoil</i>	0.41 m to 0.42 m
<i>Features</i>	None
<i>Significant Features</i>	None
<i>Subsoil</i>	Orange sands and gravels
<i>Finds</i>	None

Trench 6

<i>Dimensions</i>	60 m x 2.0 m
-------------------	--------------

<i>Orientation</i>	E-W
<i>Depth of Topsoil</i>	1.00 m to 0.99 m
<i>Features</i>	None
<i>Significant Features</i>	None
<i>Subsoil</i>	Orange sands and gravels
<i>Finds</i>	None

Trench 7

<i>Dimensions</i>	70 m x 2.0 m
<i>Orientation</i>	N-S
<i>Depth of Topsoil</i>	0.78 m to 0.86 m
<i>Features</i>	None
<i>Significant Features</i>	None
<i>Subsoil</i>	Orange gravels and sands
<i>Finds</i>	None

Trench 8

<i>Dimensions</i>	160 m x 2.0 m
<i>Orientation</i>	NW-SE
<i>Depth of Topsoil</i>	0.41 m to 0.50 m
<i>Features</i>	None
<i>Significant Features</i>	None
<i>Subsoil</i>	Orange sands and gravels
<i>Finds</i>	None

Trench 9

<i>Dimensions</i>	30 m x 2.0 m
<i>Orientation</i>	N-S
<i>Depth of Topsoil</i>	0.60 m to 0.68 m
<i>Features</i>	None
<i>Significant Features</i>	None
<i>Subsoil</i>	Orange sands and gravels
<i>Finds</i>	None

Trench 10

<i>Dimensions</i>	130 m x 2.0 m
<i>Orientation</i>	NW-SE
<i>Depth of Topsoil</i>	0.60 m to 0.64 m
<i>Features</i>	None
<i>Significant Features</i>	None
<i>Subsoil</i>	Orange sands and gravels
<i>Finds</i>	None

Trench 11

<i>Dimensions</i>	100 m x 2.0 m
<i>Orientation</i>	NE-SW
<i>Depth of Topsoil</i>	0.83 m to 0.44 m
<i>Features</i>	None
<i>Significant Features</i>	

Subsoil Orange sands and gravels
Finds None

Trench 12

Dimensions 160 m x 2.0 m
Orientation N-S
Depth of Topsoil 0.30 m to 0.32 m
Features None
Significant Features None
Subsoil Orange sands and gravels
Finds None

Trench 13

Dimensions 100 m x 2.0 m
Orientation NW-SE
Depth of Topsoil 0.50 m to 0.52 m
Features None
Significant Features None
Subsoil Orange gravels and sands
Finds None

Trench 14

Dimensions 200 m x 2.0 m
Orientation NW-SE
Depth of Topsoil 0.53 m to 0.59 m
Features None
Significant Features None
Subsoil Orange sands and gravels
Finds None

Trench 15

Dimensions 100 m x 2.0 m
Orientation N-S
Depth of Topsoil 0.36 m to 0.42 m
Features None
Significant Features None
Subsoil Orange sands and gravels
Finds None

Trench 16

Dimensions 200 m x 2.0 m
Orientation SW-NE
Depth of Topsoil 0.50 m to 0.60 m
Features None
Significant Features None
Subsoil Yellow sands and gravels
Finds None

Trench 17

<i>Dimensions</i>	66 m x 2.0 m
<i>Orientation</i>	N-S
<i>Depth of Topsoil</i>	0.36 m to 0.48 m
<i>Features</i>	None
<i>Significant Features</i>	None
<i>Subsoil</i>	Orange sands and gravels
<i>Finds</i>	None

Trench 18

<i>Dimensions</i>	51 m x 2.0 m
<i>Orientation</i>	NE-SW
<i>Depth of Topsoil</i>	0.30 m to 0.88 m
<i>Features</i>	None
<i>Significant Features</i>	None
<i>Subsoil</i>	Sandy clay
<i>Finds</i>	None

Trench 19

<i>Dimensions</i>	100 m x 2.0 m
<i>Orientation</i>	N-S
<i>Depth of Topsoil</i>	0.41 m to 0.54 m
<i>Features</i>	None
<i>Significant Features</i>	None
<i>Subsoil</i>	Orange sands and gravels
<i>Finds</i>	None

Trench 20

<i>Dimensions</i>	100 m x 2.0 m
<i>Orientation</i>	NE-SW
<i>Depth of Topsoil</i>	0.30 m to 0.30 m
<i>Features</i>	None
<i>Significant Features</i>	None
<i>Subsoil</i>	Orange Sand
<i>Finds</i>	None

Trench 21

<i>Dimensions</i>	107 m x 2.0 m
<i>Orientation</i>	E-W
<i>Depth of Topsoil</i>	0.30 to 0.33m
<i>Features</i>	None
<i>Significant Features</i>	None
<i>Subsoil</i>	Orange sands and gravels
<i>Finds</i>	None

Trench 22

<i>Dimensions</i>	100 x 2.0 m
<i>Orientation</i>	N-S
<i>Depth of Topsoil</i>	0.42 m to 0.52 m
<i>Features</i>	None

<i>Significant Features</i>	None
<i>Subsoil</i>	Orange sands and gravels
<i>Finds</i>	None

Trench 23

<i>Dimensions</i>	100 m x 2.0 m
<i>Orientation</i>	NE-SW
<i>Depth of Topsoil</i>	0.40 m to 0.51m
<i>Features</i>	None
<i>Significant Features</i>	None
<i>Subsoil</i>	Orange sands and gravels
<i>Finds</i>	None

Trench 24

<i>Dimensions</i>	52 m x 2.0 m
<i>Orientation</i>	NE-NW
<i>Depth of Topsoil</i>	0.80 m to 1.00 m
<i>Features</i>	None
<i>Significant Features</i>	None
<i>Subsoil</i>	Orange gravels and sands
<i>Finds</i>	None

Trench 25

<i>Dimensions</i>	100 m x 2.0 m
<i>Orientation</i>	NW-SE
<i>Depth of Topsoil</i>	0.38 m to 0.41 m
<i>Features</i>	None
<i>Significant Features</i>	None
<i>Subsoil</i>	Orange sands and gravels
<i>Finds</i>	None

Trench 26

<i>Dimensions</i>	100 m x 2.0 m
<i>Orientation</i>	NW-SE
<i>Depth of Topsoil</i>	0.80 m to 1.00 m
<i>Features</i>	None
<i>Significant Features</i>	None
<i>Subsoil</i>	Orange sands and gravels
<i>Finds</i>	None

Trench 27

<i>Dimensions</i>	100 m x 2.0 m
<i>Orientation</i>	NW-SE
<i>Depth of Topsoil</i>	0.38 m to 0.42 m
<i>Features</i>	None
<i>Significant Features</i>	None
<i>Subsoil</i>	Orange gravels and sands
<i>Finds</i>	None

Trench 28

<i>Dimensions</i>	100 m x 2.0 m
<i>Orientation</i>	E-W
<i>Depth of Topsoil</i>	1.00 m to 1.00 m
<i>Features</i>	None
<i>Significant Features</i>	None
<i>Subsoil</i>	Orange gravels and sands
<i>Finds</i>	None

Trench 29

<i>Dimensions</i>	130 m x 2.0 m
<i>Orientation</i>	NW-SE
<i>Depth of Topsoil</i>	0.40 m to 0.41 m
<i>Features</i>	None
<i>Significant Features</i>	None
<i>Subsoil</i>	Orange gravels and sands
<i>Finds</i>	None

Trench 30

<i>Dimensions</i>	100 m x 2.0 m
<i>Orientation</i>	N-S
<i>Depth of Topsoil</i>	1.00 m to 0.25m
<i>Features</i>	Ceramic drains at 9, 45m asbestos and lead (?) water service at 81m
<i>Significant Features</i>	None
<i>Subsoil</i>	Orange sands
<i>Finds</i>	None

Trench 31

<i>Dimensions</i>	120 m x 2.0 m
<i>Orientation</i>	NW-SE
<i>Depth of Topsoil</i>	0.40 m to 0.41 m
<i>Features</i>	Asbestos pipe at 12m
<i>Significant Features</i>	None
<i>Subsoil</i>	Orange gravels and sands
<i>Finds</i>	None

Trench 32

<i>Dimensions</i>	120 m x 2.0 m
<i>Orientation</i>	S-N
<i>Depth of Topsoil</i>	1.00 m to 0.40 m
<i>Features</i>	None
<i>Significant Features</i>	None
<i>Subsoil</i>	Orange gravels and sands
<i>Finds</i>	None

Trench 33

<i>Dimensions</i>	130 m x 2.0 m
<i>Orientation</i>	NW-SE
<i>Depth of Topsoil</i>	0.57 m to 0.40 m
<i>Features</i>	Ceramic drain at 85m
<i>Significant Features</i>	None
<i>Subsoil</i>	Orange gravels and sands

Finds None

Trench 34

Dimensions 80 m x 2.0 m
Orientation W-E
Depth of Topsoil 0.60 m to 0.58 m
Features None
Significant Features None
Subsoil Orange gravels and sands
Finds None

Trench 35

Dimensions 120 m x 2.0 m
Orientation N-S
Depth of Topsoil 0.80 m to 0.35 m
Features None
Significant Features None
Subsoil Orange gravels and sands
Finds None

Trench 36

Dimensions 125 m x 2.0 m
Orientation S-N
Depth of Topsoil 0.60 m to 0.59 m
Features None
Significant Features None
Subsoil Orange gravels and sands
Finds None

Trench 37

Dimensions 150 m x 2.0 m
Orientation N-S
Depth of Topsoil 0.50 m to 0.70 m
Features None
Significant Features None
Subsoil Orange gravels and sands
Finds None

Trench 38

Dimensions 80 m x 2.0 m
Orientation SW-NE
Depth of Topsoil 0.60 m to 0.58 m
Features Soakaway to muckheap at 9m from NE
 Asbestos pipe at 45m
Significant Features None
Subsoil Orange gravels and sands
Finds None

Trench 39

<i>Dimensions</i>	175 m x 2.0 m
<i>Orientation</i>	SW-NE
<i>Depth of Topsoil</i>	0.38 m to 0.95 m
<i>Features</i>	Modern pit, filled with stones and charcoal (squared timber)
<i>Significant Features</i>	None
<i>Subsoil</i>	Orange gravels and sands
<i>Finds</i>	None

Trench 40

<i>Dimensions</i>	27 m x 2.0 m
<i>Orientation</i>	NW-SE
<i>Depth of Topsoil</i>	0.2 m to 0.2 m
<i>Features</i>	None
<i>Significant Features</i>	None
<i>Subsoil</i>	Orange sands and gravels
<i>Finds</i>	None

Trench 41

<i>Dimensions</i>	110 m x 2.0 m
<i>Orientation</i>	NE-SW
<i>Depth of Topsoil</i>	0.50 m to 0.55 m
<i>Features</i>	None
<i>Significant Features</i>	None
<i>Subsoil</i>	Orange gravels and sands
<i>Finds</i>	None

Trench 42

<i>Dimensions</i>	42 m x 2.0 m
<i>Orientation</i>	SE-NW
<i>Depth of Topsoil</i>	0.2 m
<i>Features</i>	None
<i>Significant Features</i>	None
<i>Subsoil</i>	Orange gravels and sands
<i>Finds</i>	None

Trench 43

<i>Dimensions</i>	59 m x 2.0 m
<i>Orientation</i>	SE-NW
<i>Depth of Topsoil</i>	0.85 m to 0.55 m
<i>Features</i>	Water pipe running E-W
<i>Significant Features</i>	None
<i>Subsoil</i>	Sands and clays
<i>Finds</i>	None

Trench 44

<i>Dimensions</i>	125 m x 2.0 m
<i>Orientation</i>	NW-SE
<i>Depth of Topsoil</i>	0.2 m to 0.6 m

<i>Features</i>	None
<i>Significant Features</i>	None
<i>Subsoil</i>	Orange sands
<i>Finds</i>	None

Trench 45

<i>Dimensions</i>	150 x 2.0 m
<i>Orientation</i>	SE-NW
<i>Depth of Topsoil</i>	0.75 to 0.30
<i>Features</i>	None
<i>Significant Features</i>	None
<i>Subsoil</i>	Sand and clay
<i>Finds</i>	None

Trench 46

<i>Dimensions</i>	120 m x 2.0 m
<i>Orientation</i>	SW-NE
<i>Depth of Topsoil</i>	0.30 m to 0.65 m
<i>Features</i>	None
<i>Significant Features</i>	None
<i>Subsoil</i>	Orange sand
<i>Finds</i>	None

Trench 47

<i>Dimensions</i>	30 m x 2.0 m
<i>Orientation</i>	SE-NW
<i>Depth of Topsoil</i>	0.3 m to 0.23 m
<i>Features</i>	None
<i>Significant Features</i>	None
<i>Subsoil</i>	Orange sands and gravels
<i>Finds</i>	None

APPENDIX 2: Photographic Register

Digital Film 1

Frame	Trench	Description	From
1-2	1	Pit [1001] Post-ex	SW
3-4	33	Working Shots	
5-6	34	Trench 34	E
7-8		General view of trenches, W end of site	SE
9	1	[1001]	SW
10	42	Trench 42 post ex	W
11	18	Trench 18 post ex	E
12	13	Trench 13 post ex	S
13	29	Trench 29 post ex	N
14	1	Trench 1 and W end of site	E
15	1	Trench 1 looking E	W
16		General view of trenches N of pylons	E
17-18	1	Extension around [1001]	NE
19	3	Trench 3 post ex	NW
20		General view of trenches, SE corner of site	NW
21		General view of trenches, S extent of site	N
22-23		General view of trenches, SW extent of site	NE
24		General view of trenching on high ground	E
25	35	Trench 35 Post Ex	S
26	39	Trench 39 Post Ex	S
27-28		General view of S trenches	W
29-30	39	Modern pit, containing burnt timber and stones	NE

APPENDIX 3: Context Register

Context	Trench	Description
[1001]	1	Cut of large pit
(1002)	1	Basal Fill of pit [1001]
(1003)	1	Secondary fill of [1001]
(1004)	1	Tertiary fill of [1001]

APPENDIX 4: Sample Register

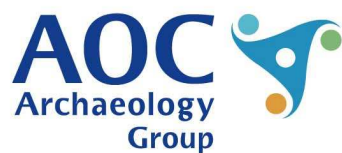
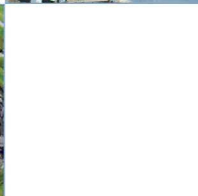
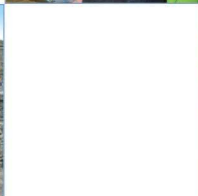
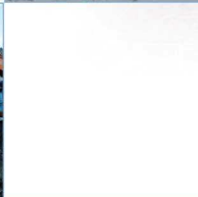
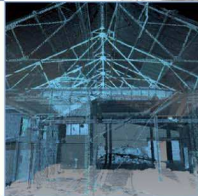
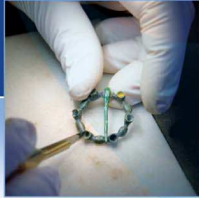
Context	Quantity
[1004]	1

APPENDIX 5: Evaluation Drawing Register

Drawing Number	Scale	Description
1	1:100	Plan of [1001]
2	1:100	Section of [1001]

APPENDIX 6: 'Discovery and Excavation in Scotland' Report

LOCAL AUTHORITY:	Moray Council
PROJECT TITLE/SITE NAME:	Elgin Business Park Evaluation, Phase 1
PROJECT CODE:	AOC 22357
PARISH:	Elgin
NAME OF CONTRIBUTOR:	Jake Steatfeild-James
NAME OF ORGANISATION:	AOC Archaeology Group
TYPE(S) OF PROJECT:	Archaeological Evaluation
NMRS NO(S):	N/A
SITE/MONUMENT TYPE(S):	N/A
SIGNIFICANT FINDS:	N/A
NGR:	NJ 2448 6196
START DATE (this season)	11 th February 2013
END DATE (this season)	16 th February 2013
PREVIOUS WORK (incl. DES)	None
MAIN DESCRIPTION: (May include information from other fields)	This report presents the results of an archaeological evaluation undertaken by AOC Group in February 2013, over land adjacent to a recognised cropmark site. The evaluation revealed a single large pit of indeterminate date, with no finds or other significant archaeological material recovered.
PROPOSED FUTURE WORK:	None
CAPTION(S) FOR ILLUSTRS:	n/a
SPONSOR OR FUNDING BODY:	Springfield Properties Ltd
ADDRESS OF MAIN CONTRIBUTOR:	C/o AOC Archaeology Group
EMAIL ADDRESS:	Admin@aocarchaeology.com



AOC Archaeology Group, Edgefield Industrial Estate, Edgefield Road, Loanhead EH20 9SY
tel: 0131 440 3593 | fax: 0131 440 3422 | e-mail: edinburgh@aacarchaeology.com

www.aocarchaeology.com