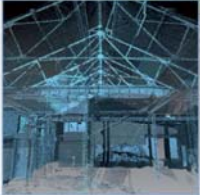
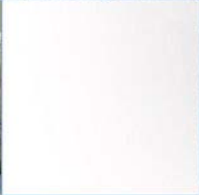


Townend Brae Phase 2, Symington, South Ayrshire: Archaeological Evaluation Report

9th November 2015
AOC Project No: 22506



ARCHAEOLOGY

HERITAGE

CONSERVATION

Townend Brae Phase 2, Symington, South Ayrshire: Archaeological Evaluation Report

On Behalf of: Mactaggart & Mickel Homes Ltd
1 Atlantic Quay,
1 Robertson Street,
Glasgow,
G2 8JB

And

Stewart Milne Group
Peregrine House,
Mosscroft Avenue,
Westhill Business Park,
Aberdeen,
AB32 6JQ

National Grid Reference (NGR): NS 38000 31500

AOC Project No: 22506

Prepared by: Jessica Lumb

Illustrations by: Jessica Lumb

Date: 9th November 2015

This document has been prepared in accordance with AOC standard operating procedures.

Author: Jessica Lumb

Date: 9th November 2015

Approved by: Martin Cook

Date: 17th November 2015

Draft/Final Report Stage: Final

Date: 17th November 2015

Enquiries to: AOC Archaeology Group
Edgefield Industrial Estate
Edgefield Road
Loanhead
EH20 9SY

Tel. 0131 440 3593
Fax. 0131 440 3422
e-mail. admin@aocarchaeology.com

Contents	Page
List of Figures	4
List of Plates	4
List of Appendices	4
Summary	5
1 INTRODUCTION	Error! Bookmark
not defined.	
2 PROJECT BACKGROUND	6
2.1 Site Location	6
2.2 Archaeological Background	6
2 OBJECTIVES	6
3 METHODOLOGY	7
4 RESULTS	7
5 CONCLUSIONS AND RECOMMENDATIONS	7
6 REFERENCES	7
Plate 2: Post-ex Shot of Trench 8	8
APPENDIX 1: Trench Descriptions	9
APPENDIX 2: Context Register	16
APPENDIX 3: Photographic Register	16
APPENDIX 4: <i>Discovery and Excavation in Scotland</i> Report	18

List of Figures

Figure 1: Site location map

Figure 2: Evaluation trench location plan

List of Plates

Plate 1: East facing section of [401]

Plate 2: Post-ex Shot of Trench 8

List of Appendices

Appendix 1: Trench Descriptions

Appendix 2: Context Register

Appendix 3: Photographic Register

Appendix 4: *'Discovery and Excavation in Scotland'* Report

Summary

This report presents the results of an archaeological evaluation on the site of a proposed development at Townend Brae, Symington, South Ayrshire. An 8% evaluation was required of the available 69,000m², equating to 2,760 linear metres of trenching. However, the presence of an attenuation pond and existing services reduced the total to 1,680 linear metres. A total of 37 trenches were excavated comprising 1,811 metres of linear machine trenching.

No significant archaeological remains were encountered. No further archaeological works are recommended. This will need verification by the West of Scotland Archaeology Service (WoSAS), who advise South Ayrshire Council on archaeological matters.

1 INTRODUCTION

- 1.1 An archaeological evaluation was required by McTaggart and Mickel Homes Ltd and Stewart Milne Group for the development of a new housing estate. The need for, and scope of, the archaeological works was determined by the South Ayrshire Council who are advised on archaeological matters by the West of Scotland Archaeological Service (hereafter referred to as WoSAS). The programme of archaeological works required was in keeping with best practice outlined in current planning policy and guidelines: *Scottish Planning Policy* (2014) & *PAN 2/2011 Planning and Archaeology* (2011).

2 PROJECT BACKGROUND

2.1 Site Location

- 2.1.1 The proposed development area is centered at NGR: NS 38000 31500 (Figure 1) and comprises open fields with a small area of woodland to the north, located on the western edge of the village of Symington, South Ayrshire. The area is bounded by Main Street to the north-east, Townend Brae to the north, urban development to the north-west and east, and open farmland to the south-west. There is an existing attenuation pond in the north of the proposed development area, the ground generally sloping gently from south-east to north-west.

2.2 Archaeological Background

- 2.2.1 No known archaeological sites are recorded in the National Monuments Record of Scotland (NMRS) within the development area.
- 2.2.2 To the north-east of the site lies Main Street which falls under South Ayrshire's conservation area of Symington Village. To the north-west lies the Category B buildings of Townend & Stables dating to the 18th/19th century. Further to the west of this lies the find spot for a polished stone axe (NMRS: NS33SE 13), suggesting potential prehistoric occupation in the area.
- 2.2.3 AOC Archaeology Group undertook an archaeological evaluation to the north of the development site at Townhead Terrace in 2008. A total of 19 trenches were excavated in a 3.5ha greenfield site, which proved to be archaeologically sterile. The topsoil, which varied in depth from 0.14m to 0.75m, contained occasional fragments of modern white ceramic and burnt flint throughout. This unstratified flint is indicative of later agricultural fertilising practices; almost all of the noted pieces were large unworked, burnt nodules, the typical residue of 'liming'. (Dunbar 2008 & 2008a).

2 OBJECTIVES

- 2.1 The objectives of the archaeological works were:
- i. to determine and assess the character, extent, condition, quality, date and significance of any sub-surface archaeological remains within the proposed development area.
 - ii. should significant archaeological deposits be discovered, to liaise with the client and WoSAS in preparing an appropriate form of mitigation compliant with *Scottish Planning Policy* (2014) and *Planning and Archaeology 2/2011* (2011).

3 METHODOLOGY

- 3.1 The council required an 8% evaluation of the available 69,000m², equating to 5,520m² but the presence of an attenuation pond reduced the available area by at least 0.5ha and the presence of both overhead and underground services further reduced the total to 3,360m². A total of 37 trenches were excavated to ensure good coverage of the remaining area comprising 1,811 metres of linear machine trenching or 3,622m².
- 3.2 The evaluation was undertaken by a 13-tonne excavator with a 2m wide bladed ditching bucket. All excavation was undertaken in shallow units/spits until the first significant archaeological horizon or natural subsoil was reached. All machine excavation was supervised by an experienced field archaeologist and according to AOC Archaeology Group's standard operating procedures, and as per the methodology within the *Written Scheme of Investigation* (AOC 2015). Most of the trenches were backfilled at the end of the programme of evaluation, with a few backfilled immediately after recording as health and safety concerns were present.

4 RESULTS

- 4.1 The weather during the evaluation was poor, meaning that archaeological visibility was generally low, with low light being the main issue. In total, the evaluation involved the excavation of 37 trenches, totalling 1,811 linear metres, with trenches providing good coverage of the areas available (Figure 2).
- 4.2 Four features were encountered during the evaluation. Of the three features excavated in Trench 4, one was a modern posthole, likely from a buried BT cable onsite, and the other two likely represent bioturbation. A further feature was excavated in Trench 15, which is considered to be a burrow. No finds were recovered from any of these features.

5 CONCLUSIONS AND RECOMMENDATIONS

- 5.1 Four features were excavated during the evaluation works. One was deemed to be modern and the others are considered to be bioturbation.
- 5.2 None of these features are therefore taken to be considered as significant in the context of this evaluation and no further archaeological works are considered necessary. This recommendation will need approval by the West of Scotland Archaeology Service (WoSAS), who advise the South Ayrshire Council on archaeological matters.

6 REFERENCES

- AOC Archaeology Group 2015 *Phase 2, Townend Brae, Symington, South Ayrshire: Archaeological Evaluation Written Scheme of Investigation*, Unpublished Client Report
- Dunbar, L 2008 'Townhead Terrace, Symington, South Ayrshire (Symington parish), evaluation', *Discovery Excav Scot*, New, vol.9, Cathedral Communications Limited, Wiltshire, England.
- Dunbar, L 2008a *Townhead Terrace, Symington, South Ayrshire; Archaeological Evaluation*, AOC Archaeology Group Data Structure Report.
- Scottish Government 2014 *Scottish Planning Policy* (2014)
- Scottish Government 2011 PAN 2/2011 Planning & Archaeology

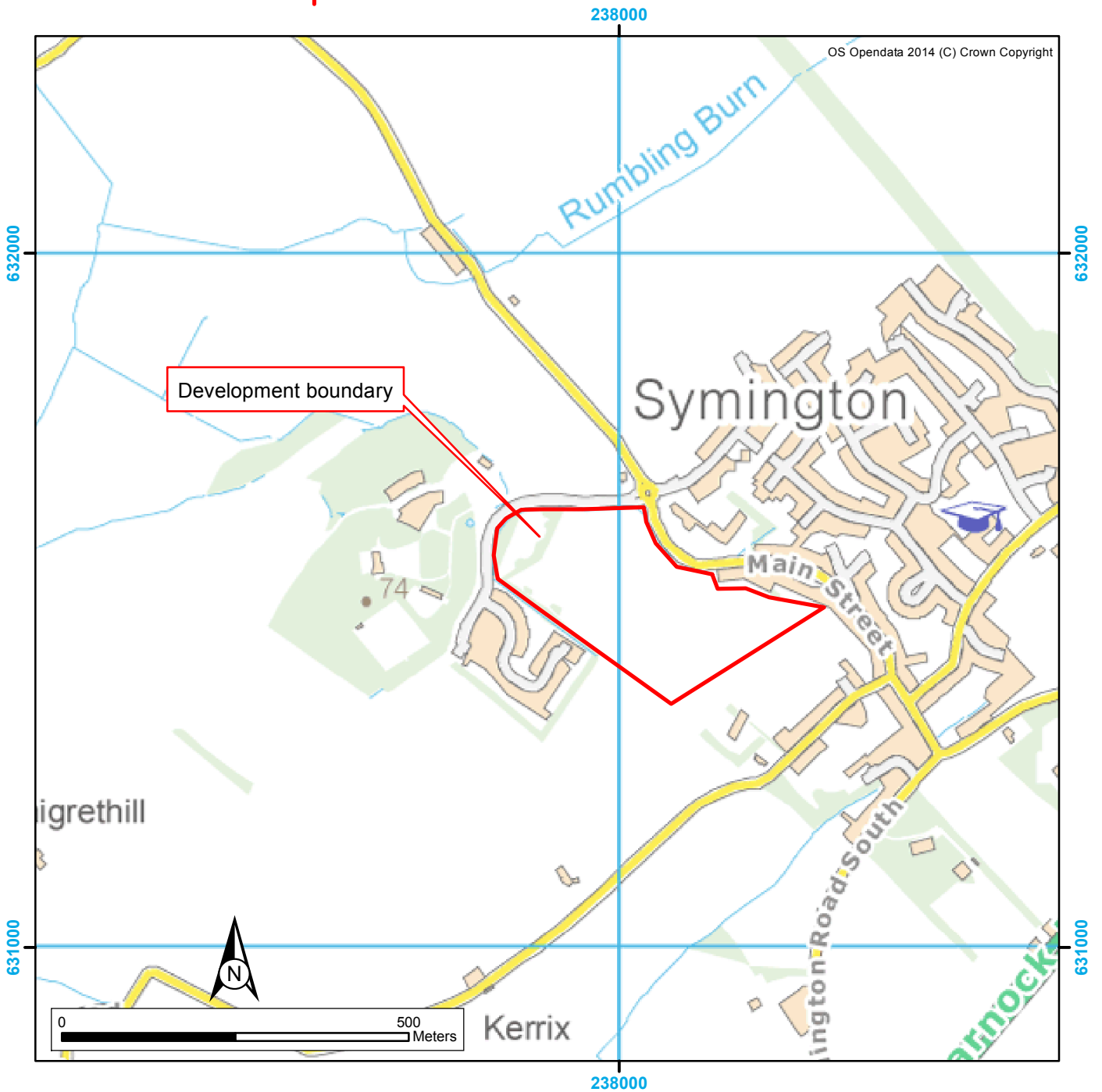
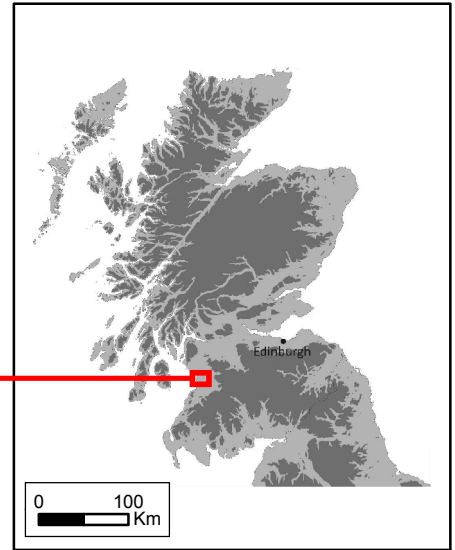
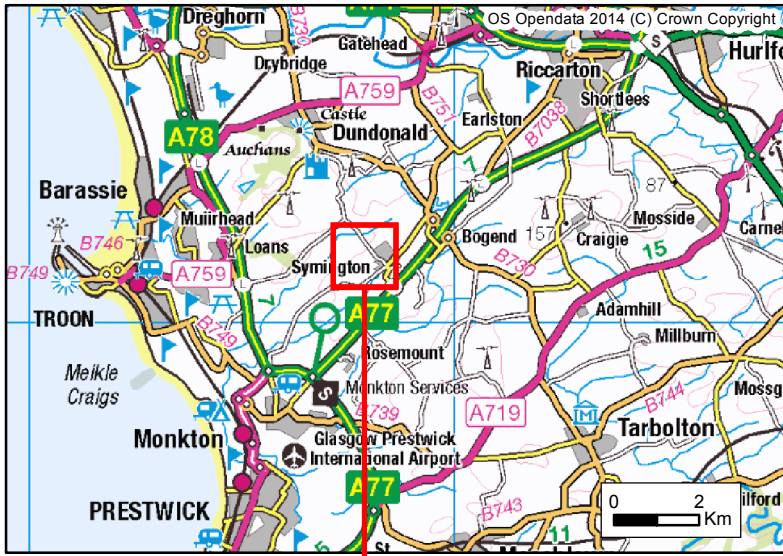


Figure 1: Site Location Plan

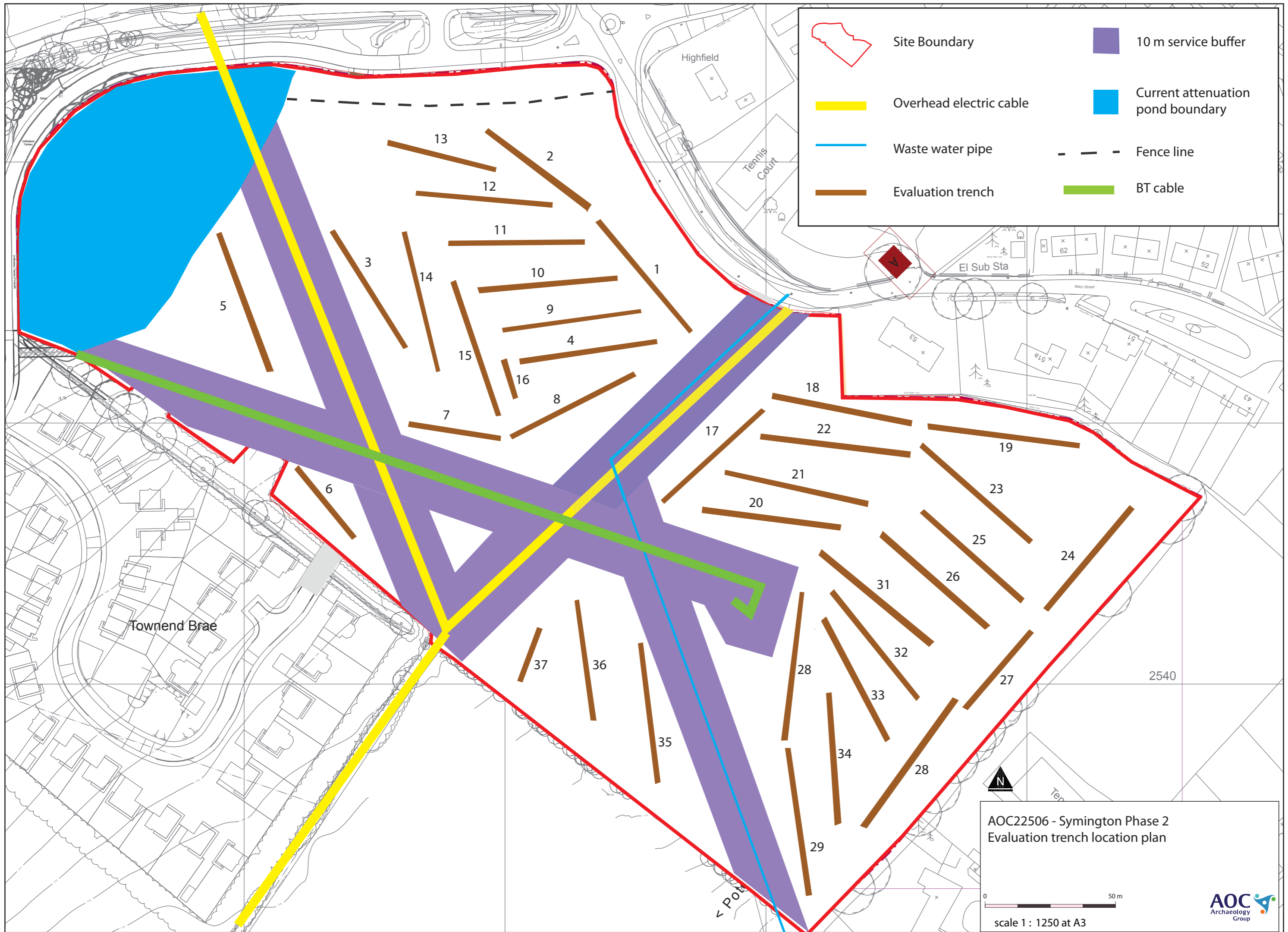




Plate 1: East facing section of [401]



Plate 2: Post-ex Shot of Trench 8

APPENDIX 1: Trench Descriptions

Trench 1

<i>Dimensions</i>	54 m by 2 m
<i>Total Area</i>	108 m ²
<i>Excavated Orientation</i>	SE to NW
<i>Soil Make-up</i>	Topsoil – Mid brown red silty clay with frequent charcoal flecks and stones, 0.3m - 0.38m
<i>Significant Features</i>	None
<i>Other Features</i>	None
<i>Natural Subsoil</i>	Light orange brown silty clay with frequent sub angular stones and patches of bedrock
<i>Finds</i>	None

Trench 2

<i>Dimensions</i>	50 m by 2 m
<i>Total Area</i>	100 m ²
<i>Excavated Orientation</i>	WNW - ESE
<i>Soil Make-up</i>	Topsoil – Mid brown red silty clay with frequent charcoal flecks and stones, 0.27m - 0.35m
<i>Significant Features</i>	None
<i>Other Features</i>	None
<i>Natural Subsoil</i>	Light orange brown silty clay with frequent sub angular stones and patches of bedrock
<i>Finds</i>	None

Trench 3

<i>Dimensions</i>	54 m by 2 m
<i>Total Area</i>	108 m ²
<i>Excavated Orientation</i>	NW to SE
<i>Soil Make-up</i>	Dump from recently created Suds pond, on top of existing topsoil from approximately 15m to approx. 39m, 0.30m thick at deepest. Topsoil – Mid brown red silty clay with frequent charcoal flecks and stones, 0.4m - 0.45m
<i>Significant Features</i>	None
<i>Other Features</i>	None
<i>Natural Subsoil</i>	Light orange brown and grey silty clay with frequent sub angular stones
<i>Finds</i>	None

Trench 4

<i>Dimensions</i>	52 m by 2 m
<i>Total Area</i>	104 m ²
<i>Excavated Orientation</i>	ENE to WSW
<i>Soil Make-up</i>	Topsoil – Mid brown red silty clay with frequent charcoal flecks and stones, 0.29m – 0.5m
<i>Significant Features</i>	[401], [403], [405]
<i>Other Features</i>	None
<i>Natural Subsoil</i>	Light orange silty clay with frequent sub angular stones and patches of bedrock
<i>Finds</i>	None

Trench 5

<i>Dimensions</i>	55 m by 2 m
<i>Total Area</i>	110 m ²
<i>Excavated Orientation</i>	ENE to WSW
<i>Soil Make-up</i>	Dump from recently created Suds pond, on top of existing topsoil from approximately 10m to 34.8m, 0.42m thick at deepest. Topsoil – Mid brown red silty clay with frequent charcoal flecks and stones, 0.3m - 0.5m
<i>Significant Features</i>	None
<i>Other Features</i>	Burrow 13m oriented NE-SE and drains 15.9m to 16.2m and 17.2m to 17.5m from ENE and of trench, oriented E-W
<i>Natural Subsoil</i>	Light orange mottled grey silty clay with frequent sub angular stones
<i>Finds</i>	None

Trench 6

<i>Dimensions</i>	35 m by 2 m
<i>Total Area</i>	70 m ²

<i>Excavated Orientation</i>	NNW to SSE
<i>Soil Make-up</i>	Topsoil – Mid brown red silty clay with frequent charcoal flecks and stones, 0.29m – 0.48m
<i>Significant Features</i>	None
<i>Other Features</i>	Rubble drain 5.9m – 7.2m oriented E-W
<i>Natural Subsoil</i>	Light orange mottled grey silty clay with frequent sub angular stones
<i>Finds</i>	None

Trench 7

<i>Dimensions</i>	36 m by 2 m
<i>Total Area</i>	72 m ²
<i>Excavated Orientation</i>	NE to SE
<i>Soil Make-up</i>	Topsoil – Mid brown red silty clay with frequent charcoal flecks and stones, 0.35m – 0.61m
<i>Significant Features</i>	None
<i>Other Features</i>	None
<i>Natural Subsoil</i>	Light orange mottled grey silty clay with frequent sub angular stones
<i>Finds</i>	None

Trench 8

<i>Dimensions</i>	52 m by 2 m
<i>Total Area</i>	104 m ²
<i>Excavated Orientation</i>	WSW to ENE
<i>Soil Make-up</i>	Topsoil – Mid brown red silty clay with frequent charcoal flecks and stones, 0.29m – 0.33m
<i>Significant Features</i>	None
<i>Other Features</i>	None
<i>Natural Subsoil</i>	Light orange mottled grey silty clay with frequent sub angular stones
<i>Finds</i>	None

Trench 9

<i>Dimensions</i>	52 m by 2 m
<i>Total Area</i>	104 m ²
<i>Excavated Orientation</i>	ENE to WSW
<i>Soil Make-up</i>	Topsoil – Mid brown red silty clay with frequent charcoal flecks and stones, 0.32m – 0.48m
<i>Significant Features</i>	None
<i>Other Features</i>	Field drain 24.2m to 27.8m ESE - WNW
<i>Natural Subsoil</i>	Light orange mottled grey silty clay with frequent sub angular stones, bedrock outcrops from 31m to 42m
<i>Finds</i>	None

Trench 10

<i>Dimensions</i>	52 m by 2 m
<i>Total Area</i>	104 m ²
<i>Excavated Orientation</i>	E to W
<i>Soil Make-up</i>	Topsoil – Mid brown red silty clay with frequent charcoal flecks and stones, 0.35m – 0.61m
<i>Significant Features</i>	None
<i>Other Features</i>	None
<i>Natural Subsoil</i>	Light orange mottled grey silty clay with frequent sub angular stones and regular outcrops of bedrock
<i>Finds</i>	None

Trench 11

<i>Dimensions</i>	52 m by 2 m
<i>Total Area</i>	104 m ²
<i>Excavated Orientation</i>	E to W
<i>Soil Make-up</i>	Topsoil – Mid brown red silty clay with frequent charcoal flecks and stones, 0.2m – 0.59m
<i>Significant Features</i>	None
<i>Other Features</i>	None
<i>Natural Subsoil</i>	Light orange mottled grey silty clay with frequent sub angular stones

<i>Finds</i>	None
Trench 12	
<i>Dimensions</i>	50 m by 2 m
<i>Total Area</i>	100 m ²
<i>Excavated Orientation</i>	ENE to WSW
<i>Soil Make-up</i>	Topsoil – Mid brown red silty clay with frequent charcoal flecks and stones, 0.43m – 0.52m
<i>Significant Features</i>	None
<i>Other Features</i>	Drain 43m – 47m, oriented N-S
<i>Natural Subsoil</i>	Light orange mottled grey silty clay with frequent sub angular stones
<i>Finds</i>	None
Trench 13	
<i>Dimensions</i>	40 m by 2 m
<i>Total Area</i>	80 m ²
<i>Excavated Orientation</i>	NE to SW
<i>Soil Make-up</i>	Dump from Suds pond overlying the topsoil in this trench also, increasing overall topsoil depths - Mid brown red silty clay with frequent charcoal flecks and stones, 0.43m – 1.1m
<i>Significant Features</i>	None
<i>Other Features</i>	None
<i>Natural Subsoil</i>	Light orange mottled grey silty clay with frequent sub angular stones
<i>Finds</i>	None
Trench 14	
<i>Dimensions</i>	53 m by 2 m
<i>Total Area</i>	106 m ²
<i>Excavated Orientation</i>	NW to SE
<i>Soil Make-up</i>	Topsoil – Mid brown red silty clay with frequent charcoal flecks and stones, 0.3m – 0.42m
<i>Significant Features</i>	None
<i>Other Features</i>	Drain, oriented E-W 27.9m – 29m and a tree bowl at 38m
<i>Natural Subsoil</i>	Light orange mottled grey silty clay with frequent sub angular stones
<i>Finds</i>	None
Trench 15	
<i>Dimensions</i>	55 m by 2 m
<i>Total Area</i>	110 m ²
<i>Excavated Orientation</i>	SSE to NNW
<i>Soil Make-up</i>	Topsoil – Mid brown red silty clay with frequent charcoal flecks and stones, 0.35m – 0.38m
<i>Significant Features</i>	Possible feature [1501] likely burrow
<i>Other Features</i>	Drain, oriented NE-SW 19m – 21m
<i>Natural Subsoil</i>	Light orange mottled grey silty clay with frequent sub angular stones
<i>Finds</i>	None
Trench 16	
<i>Dimensions</i>	15 m by 2 m
<i>Total Area</i>	30 m ²
<i>Excavated Orientation</i>	SSE to NNW
<i>Soil Make-up</i>	Topsoil – Mid brown red silty clay with frequent charcoal flecks and stones, 0.29m – 0.33m
<i>Significant Features</i>	None
<i>Other Features</i>	None
<i>Natural Subsoil</i>	Light orange mottled grey silty clay with frequent sub angular stones
<i>Finds</i>	None
Trench 17	
<i>Dimensions</i>	54 m by 2 m
<i>Total Area</i>	104 m ²
<i>Excavated Orientation</i>	WSW to ENE
<i>Soil Make-up</i>	Topsoil – Mid brown red silty clay with frequent charcoal flecks and stones, 0.30m – 0.31m
<i>Significant Features</i>	None

<i>Other Features</i>	Field drains- NW-SE 5.1m – 5.7m, 9.6m – 10.2m, 14.5m – 15.1m, 19.2m – 21.7m, 23.4m – 23.9m, 28m – 28.3m, 32.5m – 33.1m, 37.4m – 37.8m, 24.2m – 42.6m
<i>Natural Subsoil</i>	Pink and grey clay with infrequent boulders
<i>Finds</i>	None
Trench 18	
<i>Dimensions</i>	52 m by 2 m
<i>Total Area</i>	104 m ²
<i>Excavated Orientation</i>	W to E
<i>Soil Make-up</i>	Topsoil – Mid brown red silty clay with frequent charcoal flecks and stones, 0.29m – 0.33m
<i>Significant Features</i>	None
<i>Other Features</i>	Drains 5m - 10m, 26m – 30m, 36m – 40m oriented NW-SE
<i>Natural Subsoil</i>	Light orange mottled grey silty clay with frequent sub angular stones
<i>Finds</i>	None
Trench 19	
<i>Dimensions</i>	55 m by 2 m
<i>Total Area</i>	110 m ²
<i>Excavated Orientation</i>	W to E
<i>Soil Make-up</i>	Topsoil – Mid brown red silty clay with frequent charcoal flecks and stones, 0.29m – 0.33m
<i>Significant Features</i>	None
<i>Other Features</i>	Plough furrows every 4m aligned NW-SE
<i>Natural Subsoil</i>	Light orange mottled grey silty clay with frequent sub angular stones
<i>Finds</i>	None
Trench 20	
<i>Dimensions</i>	51 m by 2 m
<i>Total Area</i>	102 m ²
<i>Excavated Orientation</i>	W to E
<i>Soil Make-up</i>	Topsoil – Mid brown red silty clay with frequent charcoal flecks and stones, 0.4m – 0.45m
<i>Significant Features</i>	None
<i>Other Features</i>	Rubble field drains 5.2m – 8.6m, 14.5m – 17.2m, 27.6 – 30.5, 39m – 42m, Plough furrows 14m – 18m and 24,6m – 27.7m all aligned NW - SE
<i>Natural Subsoil</i>	Light orange mottled grey silty clay with frequent sub angular stones
<i>Finds</i>	None
Trench 21	
<i>Dimensions</i>	55 m by 2 m
<i>Total Area</i>	110 m ²
<i>Excavated Orientation</i>	ENE - WSW
<i>Soil Make-up</i>	Topsoil – Mid brown red silty clay with frequent charcoal flecks and stones, 0.48m – 0.55m
<i>Significant Features</i>	None
<i>Other Features</i>	Drains: N-S 3.7m – 4.5m and 41.8m – 46m, NW-SE 8.7m – 13m, 19.8m – 25m, 42m – 46m, NE-SW 14m – 15.9m
<i>Natural Subsoil</i>	Light orange mottled grey silty clay with frequent sub angular stones
<i>Finds</i>	None
Trench 22	
<i>Dimensions</i>	57 m by 2 m
<i>Total Area</i>	114 m ²
<i>Excavated Orientation</i>	ESE to WNW
<i>Soil Make-up</i>	Topsoil – Mid brown red silty clay with frequent charcoal flecks and stones, 0.45m – 0.53m
<i>Significant Features</i>	None
<i>Other Features</i>	Dains: NW-SE 16.6m – 19.7m, 7.3m – 10.4m, 33.4m – 36.2m, 41.4m – 45.8m, N-S 30.9m – 31.4m
<i>Natural Subsoil</i>	Light orange mottled grey silty clay with frequent sub angular stones
<i>Finds</i>	None

Trench 23

<i>Dimensions</i>	54 m by 2 m
<i>Total Area</i>	108 m ²
<i>Excavated Orientation</i>	NW to SE
<i>Soil Make-up</i>	Topsoil – Mid brown red silty clay with frequent charcoal flecks and stones, 0.45m – 0.52m
<i>Significant Features</i>	None
<i>Other Features</i>	Drains NW to SE 25m – end, E-W 21.2m – 23m, Furrow 40m - end
<i>Natural Subsoil</i>	Light orange mottled grey silty clay with frequent sub angular stones
<i>Finds</i>	None

Trench 24

<i>Dimensions</i>	50 m by 2 m
<i>Total Area</i>	100 m ²
<i>Excavated Orientation</i>	NNE to SSW
<i>Soil Make-up</i>	Topsoil – Mid brown red silty clay with frequent charcoal flecks and stones, 0.35m – 0.42m
<i>Significant Features</i>	None
<i>Other Features</i>	Drain NW-SE 24m – 24.2m, NW-SE 29m – 29.3m, NW-SE 34m – 34.3m, NW-SE 37.3m – 37.5m, NW-SE 44.2m
<i>Natural Subsoil</i>	Light orange mottled grey silty clay with frequent sub angular stones
<i>Finds</i>	None

Trench 25

<i>Dimensions</i>	50 m by 2 m
<i>Total Area</i>	104 m ²
<i>Excavated Orientation</i>	SSE to NNW
<i>Soil Make-up</i>	Topsoil – Mid brown red silty clay with frequent charcoal flecks and stones, 0.4m – 0.52m
<i>Significant Features</i>	None
<i>Other Features</i>	Drain NW-SE 15m – 34m, NW-SE 23.4m – 25.2m
<i>Natural Subsoil</i>	Light orange mottled grey silty clay with frequent sub angular stones
<i>Finds</i>	None

Trench 26

<i>Dimensions</i>	52 m by 2 m
<i>Total Area</i>	104 m ²
<i>Excavated Orientation</i>	NW to SE
<i>Soil Make-up</i>	Topsoil – Mid brown red silty clay with frequent charcoal flecks and stones, 0.43 – 0.52m
<i>Significant Features</i>	None
<i>Other Features</i>	Drain NW-SE 39m – 42m, N-S 51m – 52m
<i>Natural Subsoil</i>	Light orange mottled grey silty clay with frequent sub angular stones
<i>Finds</i>	None

Trench 27

<i>Dimensions</i>	52 m by 2 m
<i>Total Area</i>	104 m ²
<i>Excavated Orientation</i>	NNE to SSE
<i>Soil Make-up</i>	Topsoil – Mid brown red silty clay with frequent charcoal flecks and stones, 0.38m – 0.49m
<i>Significant Features</i>	None
<i>Other Features</i>	Drain NW-SE 16.4m – 16.9m, N-S 21m – 22m, N-S 26m – 26.4m
<i>Natural Subsoil</i>	Light orange mottled grey silty clay with frequent sub angular stones
<i>Finds</i>	None

Trench 28

<i>Dimensions</i>	59 m by 2 m
<i>Total Area</i>	118 m ²
<i>Excavated Orientation</i>	WSW to ENE

<i>Soil Make-up</i>	Topsoil – Mid brown red silty clay with frequent charcoal flecks and stones, 0.45m – 0.52m
<i>Significant Features</i>	None
<i>Other Features</i>	Drain NW-SE 12.1m – 12.5m, NW-SE 30.3m – 30.6m, 34.6m – 35.1m, 36m – 36.9m, Furrows NW-SE 12.9m – 14m, 23m – 24.4m, 28.5m – 29.3m, 32.4m – 34m
<i>Natural Subsoil</i>	Light orange mottled grey silty clay with frequent sub angular stones
<i>Finds</i>	None

Trench 29

<i>Dimensions</i>	53 m by 2 m
<i>Total Area</i>	106 m ²
<i>Excavated Orientation</i>	SSE to NNW
<i>Soil Make-up</i>	Topsoil – Mid brown red silty clay with frequent charcoal flecks and stones, 0.35m – 0.5m
<i>Significant Features</i>	None
<i>Other Features</i>	Drain NW-SE 27m – 29m, 29m – 33m, 33.2m – 53m, Furrows NW-SE 5m – 7m, 9.8m – 14m, 16.2m – 19.5m, 22.5 – 27m, 44m – 47m
<i>Natural Subsoil</i>	Light orange mottled grey silty clay with frequent sub angular stones
<i>Finds</i>	None

Trench 30

<i>Dimensions</i>	54 m by 2 m
<i>Total Area</i>	108 m ²
<i>Excavated Orientation</i>	SSW to NNE
<i>Soil Make-up</i>	Topsoil – Mid brown red silty clay with frequent charcoal flecks and stones, 0.41m – 0.52m
<i>Significant Features</i>	None
<i>Other Features</i>	Drain NW-SE 3.2m, 7.3m – 9m, 45.6m – 46.9m, 49m – 50.2m, Furrows NW-SE 12m – 14m, 17m – 20m, 34m – 35m, 39.5m – 42m
<i>Natural Subsoil</i>	Light orange mottled grey silty clay with frequent sub angular stones
<i>Finds</i>	None

Trench 31

<i>Dimensions</i>	52 m by 2 m
<i>Total Area</i>	104 m ²
<i>Excavated Orientation</i>	NW-SE
<i>Soil Make-up</i>	Topsoil – Mid brown red silty clay with frequent charcoal flecks and stones, 0.38m – 0.48m
<i>Significant Features</i>	Context (401) 26m from NE end, (403) 29m from NE end, (405) 39.5m from NE end
<i>Other Features</i>	Drain NW-SE 0m – 52m
<i>Natural Subsoil</i>	Light orange mottled grey silty clay with frequent sub angular stones
<i>Finds</i>	None

Trench 32

<i>Dimensions</i>	52 m by 2 m
<i>Total Area</i>	104 m ²
<i>Excavated Orientation</i>	ENE - WSW
<i>Soil Make-up</i>	Topsoil – Mid brown red silty clay with frequent charcoal flecks and stones, 0.42m – 0.48m
<i>Significant Features</i>	None
<i>Other Features</i>	Drain NW-SE 1m – 17.2m, 24.2m, 19.4m – 22m
<i>Natural Subsoil</i>	Light orange mottled grey silty clay with frequent sub angular stones
<i>Finds</i>	None

Trench 33

<i>Dimensions</i>	50 m by 2 m
<i>Total Area</i>	100 m ²
<i>Excavated Orientation</i>	WSW to ENE
<i>Soil Make-up</i>	Topsoil – Mid brown red silty clay with frequent charcoal flecks and stones, 0.29m – 0.33m
<i>Significant Features</i>	None
<i>Other Features</i>	Drain NW-SE 42m – 49m, NE-SW 46m – 48m, Furrow NE-SW 20m – 27.4m
<i>Natural Subsoil</i>	Light orange mottled grey silty clay with frequent sub angular stones
<i>Finds</i>	None

Trench 34

<i>Dimensions</i>	50 m by 2 m
<i>Total Area</i>	100 m ²
<i>Excavated Orientation</i>	N to S
<i>Soil Make-up</i>	Topsoil – Mid brown red silty clay with frequent charcoal flecks and stones, 0.38m – 0.4m
<i>Significant Features</i>	None
<i>Other Features</i>	Drain NW-SE 3.2m – 4.6m, Furrow 9.3m – 13.4m, 15.8m – 19.6m, 21.4m – 24.7m, 28.7m – 30.5m, 33.8m – 37m, 39.9m – 42m
<i>Natural Subsoil</i>	Light orange mottled grey silty clay with frequent sub angular stones
<i>Finds</i>	None

Trench 35

<i>Dimensions</i>	53 m by 2 m
<i>Total Area</i>	106 m ²
<i>Excavated Orientation</i>	S to N
<i>Soil Make-up</i>	Topsoil – Mid brown red silty clay with frequent charcoal flecks and stones, 0.35m – 0.36m
<i>Significant Features</i>	None
<i>Other Features</i>	Furrow 5m – 8.3m, 11.3m – 16m, 18.8m – 22.7m, 26m – 30.4m, 34.7m – 40m, 42.2m
<i>Natural Subsoil</i>	Light orange mottled grey silty clay with frequent sub angular stones
<i>Finds</i>	None

Trench 36

<i>Dimensions</i>	44 m by 2 m
<i>Total Area</i>	88 m ²
<i>Excavated Orientation</i>	SSE to NNW
<i>Soil Make-up</i>	Topsoil – Mid brown red silty clay with frequent charcoal flecks and stones, 0.32m – 0.35m
<i>Significant Features</i>	None
<i>Other Features</i>	Drain ENE-WSW 29.4 – 29.6m, Furrow 0m – 5.2m, 6.3m – 11.4m, 14m – 18.9m, 21.2 – 26.4m, 29.5m – 33.5m 40m - end
<i>Natural Subsoil</i>	Light orange mottled grey silty clay with frequent sub angular stones
<i>Finds</i>	None

Trench 37

<i>Dimensions</i>	22 m by 2 m
<i>Total Area</i>	44 m ²
<i>Excavated Orientation</i>	SSE to NNW
<i>Soil Make-up</i>	Topsoil – Mid brown red silty clay with frequent charcoal flecks and stones, 0.29m – 0.33m
<i>Significant Features</i>	None
<i>Other Features</i>	Drain ENE-WSW 6.2m – 6.8m, NE-SW 12.1m – 13.1m, Furrow 0.9m – 4.4m, 12.6m – 14m, 17.14m – 19.1m
<i>Natural Subsoil</i>	Light orange mottled grey silty clay with frequent sub angular stones
<i>Finds</i>	None

APPENDIX 2: Context Register

Context No.	Area	Description and Interpretation
401	T4	Sub rounded cut 0.5m x 0.4m x 0.2m deep Cut of posthole
402	T4	Mid to firm brown silty clay with frequent charcoal flecks Fill of posthole
403	T4	Sub oval cut 0.4m x 0.3m x 0.06m Bioturbation/Stone throw
404	T4	Very loose brown silty clay with infrequent charcoal flecks Bioturbation/Stone throw
405	T4	Sub oval cut 0.3m x 0.11m x 0.1m Bioturbation
406	T4	Compact mixed grey brown silty clay with charcoal flecks Bioturbation
1501	T15	Sub oval cut 1m x 0.6m x 0.06m Bioturbation
1502	T15	Loose grey brown silty clay with occasional charcoal flecks and occasional small stones Bioturbation

APPENDIX 3: Photographic Register

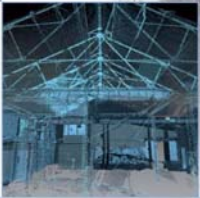
Digital Images

Frame	Description	Date
000	Post Ex trench 3	27/10/15
001	Post Ex trench 4	27/10/15
002	Working shot of goal posts	27/10/15
003+004	Section of trench 5 showing dumping deposit	27/10/15
005	Section of burrow	27/10/15
006	Pipe in cut in trench 5	27/10/15
007	Post Ex trench 5	27/10/15
008	Post Ex trench 6	27/10/15
009+010	Post Ex trench 6	27/10/15
011	Post Ex trench 7	27/10/15
012	Post Ex trench 8	28/10/15
013	Post Ex trench 9	28/10/15
014	Post Ex trench 10	28/10/15
015	Post Ex trench 11	28/10/15
016	Post Ex trench 12	28/10/15
017	Post Ex trench 13	28/10/15
018	Post Ex trench 17	29/10/15
019	Post Ex trench 18	29/10/15
020	Post Ex trench 19	29/10/15
021	Post Ex trench 20	29/10/15
022	Post Ex trench 21	29/10/15
023	Post Ex trench 22	29/10/15
024	Post Ex trench 28	30/10/15
025	Post Ex trench 27	30/10/15
026	Post Ex trench 26	30/10/15

027	Post Ex trench 29	30/10/15
028	Post Ex trench 30	30/10/15
029	Post Ex trench 31	30/10/15
030	Post Ex trench 32	30/10/15
031	East facing section [401]	30/10/15
032 + 033	East facing section [401]	30/10/15
034	North facing section [403]	30/10/15
035	North facing section [403]	30/10/15
036	South East facing section [404]	30/10/15
037 - 039	SSE facing section of [1501]	30/10/15
040	Post Ex trench 33	30/10/15
041	Post Ex trench 34	30/10/15
042	Post Ex trench 35	30/10/15
043 - 045	Plough furrows in trench 35	30/10/15
046	Post Ex trench 36	30/10/15
047	Post Ex trench 37	30/10/15

APPENDIX 4: Discovery and Excavation in Scotland Report

LOCAL AUTHORITY:	South Ayrshire Council
PROJECT TITLE/SITE NAME	Symington
PROJECT CODE:	22506
PARISH:	Symington
NAME OF CONTRIBUTOR:	Jessica Lumb
NAME OF ORGANISATION:	AOC Archaeology Group
TYPE(S) OF PROJECT:	Archaeological Evaluation
NMRS NO(S)	N/A
SITE/MONUMENT TYPE(S):	N/A
SIGNIFICANT FINDS:	None
NGR (2 letters, 6 figures)	NS 21171 60110
START DATE (this season)	26/10/2015
END DATE (this season)	04/11/2015
PREVIOUS WORK (incl. DES ref.)	None
MAIN (NARRATIVE) DESCRIPTION: (May include information from other fields)	This report presents the results of an archaeological evaluation on the site of a proposed development at Townend Brae, Symington, South Ayrshire. An 8% evaluation was required of the available 69,000m ² . A total of 37 trenches were excavated. No significant archaeological remains were encountered. No further archaeological works are recommended.
PROPOSED FUTURE WORK:	None
CAPTION(S) FOR ILLUSTRS:	None
SPONSOR OR FUNDING BODY:	McTaggart and Mickel Homes Ltd and Stewart Milne Group
ADDRESS OF MAIN CONTRIBUTOR:	Edgefield Road Industrial Estate, Loanhead, Midlothian, EH20 9SY
EMAIL ADDRESS:	admin@aocarchaeology.com
ARCHIVE LOCATION (intended/deposited)	Archive to be deposited in NMRS



AOC Archaeology Group, Edgefield Industrial Estate, Edgefield Road, Loanhead EH20 9SY
tel: 0131 440 3593 | fax: 0131 440 3422 | e-mail: admin@aocarchaeology.com

www.aocarchaeology.com