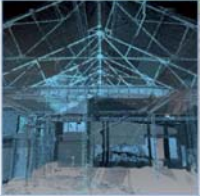


Kilmarnock, East Ayrshire Archaeological Appraisal

11th October 2013
AOC Project Number 22534



ARCHAEOLOGY

HERITAGE

CONSERVATION

Kilmarnock, East Ayrshire – Archaeological Appraisal

The following is an initial appraisal of the Heritage issues regarding the development of land at Kilmarnock, East Ayrshire.

Heritage Assets:

A Desk-Based Assessment of the development site was prepared in relation to a previous proposal in 1997. The DBA was undertaken by the now defunct Scottish Urban Archaeological Trust (SUAT) although a copy of the report is presumably held by the West of Scotland Archaeology Service HER (WoSAS HER) under reference WoSAS 1105 **Coleman, RJ**, SUAT, *A Desk-Based Assessment of Maxholm, Kilmarnock*. Part 1 (Text) and Part 2 (Illustrations) (1997) (Archive 462). The HER entry does not detail the findings of the DBA although it does note that '*further work was recommended such as a walk over survey and excavation*' was recommended.

The National Monuments Record Scotland (NMRS) record the site of the 'battle' of 'Bickering Bush' on the proposed development site. Legend holds that William Wallace defeated 5 English soldiers at the bush. The 'battle' is not included on Historic Scotland's Inventory of Historic Battlefields and given its scale, it is arguably unlikely to be in the future.

The park of Caprington Castle immediately west of the proposed development is included on Historic Scotland's Inventory of Historic Gardens and Designed Landscapes. The Category A listed castle, in reality an 1820 mansion, stands c.750m west of the proposed development, although other lower grade listed buildings associated with the castle stand closer. Although aerial photographic mapping indicates a thick tree buffer between the park and the proposed development, given its designation Historic Scotland may wish to see evidence that the proposed housing will not be visible from within the park.

A single Scheduled Monument 'Blacksyke Colliery' lies approximately 1km south of the proposed development. Its setting is unlikely to be an issue given its industrial nature and the intervening presence of trees and buildings.

The only archaeological finds reported within the vicinity of the proposed development being an ard or paddle recovered to the south of the proposed development in 1914 and cropmarks of an enclosure known to its west on the opposite side of the River Irvine.

The proposed development site is recorded in detail on the 1st edition 6 inch to the mile of 1860 (**Figure 1**). Although the site is shown as open fields, a single building '*Maxholm*' is recorded at the extreme eastern end of their site adjacent to the Maxholm Burn, a well within its interior and curiously 'the abutments of an old bridge' within the Irvine indicating a river crossing at this point. Subsequent Ordnance Survey's show the situation unaltered.

Planning Policy Context:

East Ayrshire Council is advised on archaeological matters by WoSAS.

National planning guidance detailed in Scottish Planning Policy (SPP), SHEP '*Scottish Historic Environment Policy*' and PAN 2/2011 '*Archaeology and Planning*' (Scottish Government 2011) expresses a general

presumption in favour of preserving heritage remains *in situ*. Their 'preservation by record' (i.e. through excavation and recording, followed by analysis and publication, by qualified archaeologists) is a less desirable alternative.

Recommendations:

In the first instance it is recommended that a copy of the 1997 SUAT DBA be obtained from WoSAS and a view taken with WoSAS about whether this will need updating in the light of subsequent discoveries and policy changes.

Given the proximity of the proposed development to the Inventoried Designed Landscape of Caprington Castle it is suggested that Historic Scotland be approached at an early stage.

Thomas Bradley-Lovekin

MA (Archaeology) MA (Town and Country Planning) AIfA, Licentiate RTPi

10th October 2013

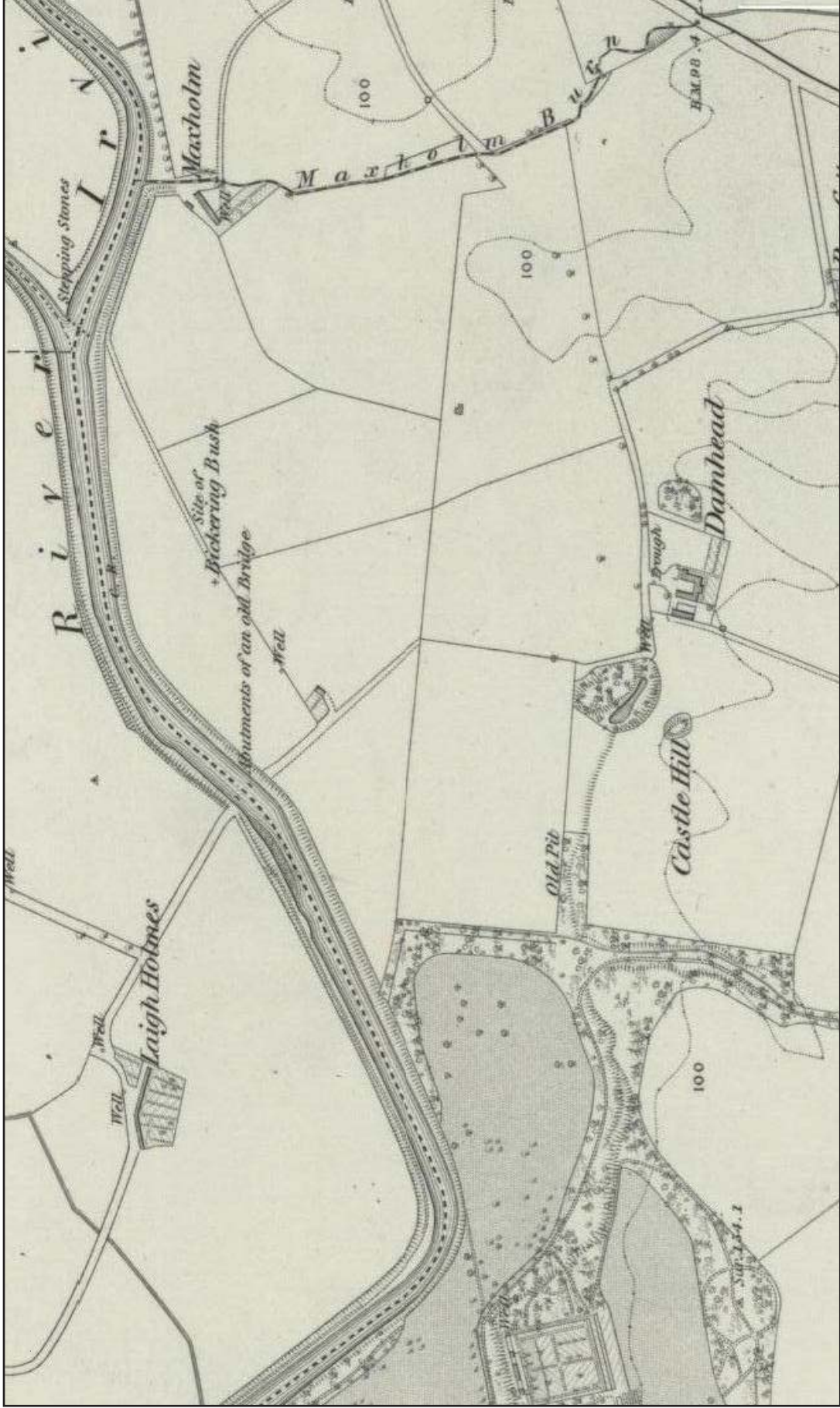
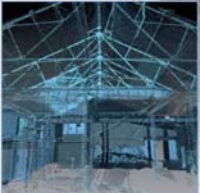


Figure 1: Extract from the First Edition Ordnance Survey 6 Inch to the mile of 1860



AOC Archaeology Group, Edgefield Industrial Estate, Edgefield Road, Loanhead EH20 9SY
tel: 0131 440 3593 | fax: 0131 440 3422 | e-mail: edinburgh@aocarchaeology.com

www.aocarchaeology.com