

INDUSTRY

BRICK MAKING MACHINE

Brickworks, North Lanarkshire
2011

This machine moulded and pressed bricks which were then fired (baked and hardened) in a kiln.

DP109775



AESTHETICS

SMACKER

Nairn's Linoleum South Factory,
Kirkcaldy, Fife

1986

This is an interior of a 'smacker' (mixer) in which the ingredients for linoleum (a hard wearing floor covering) were mixed and heated. The ingredients - linseed oil, wood flour, cork, filler and pigments - underwent a chemical change. The mixture was then granulated, rolled and attached to a textile backing.

SC1659252



EMOTION

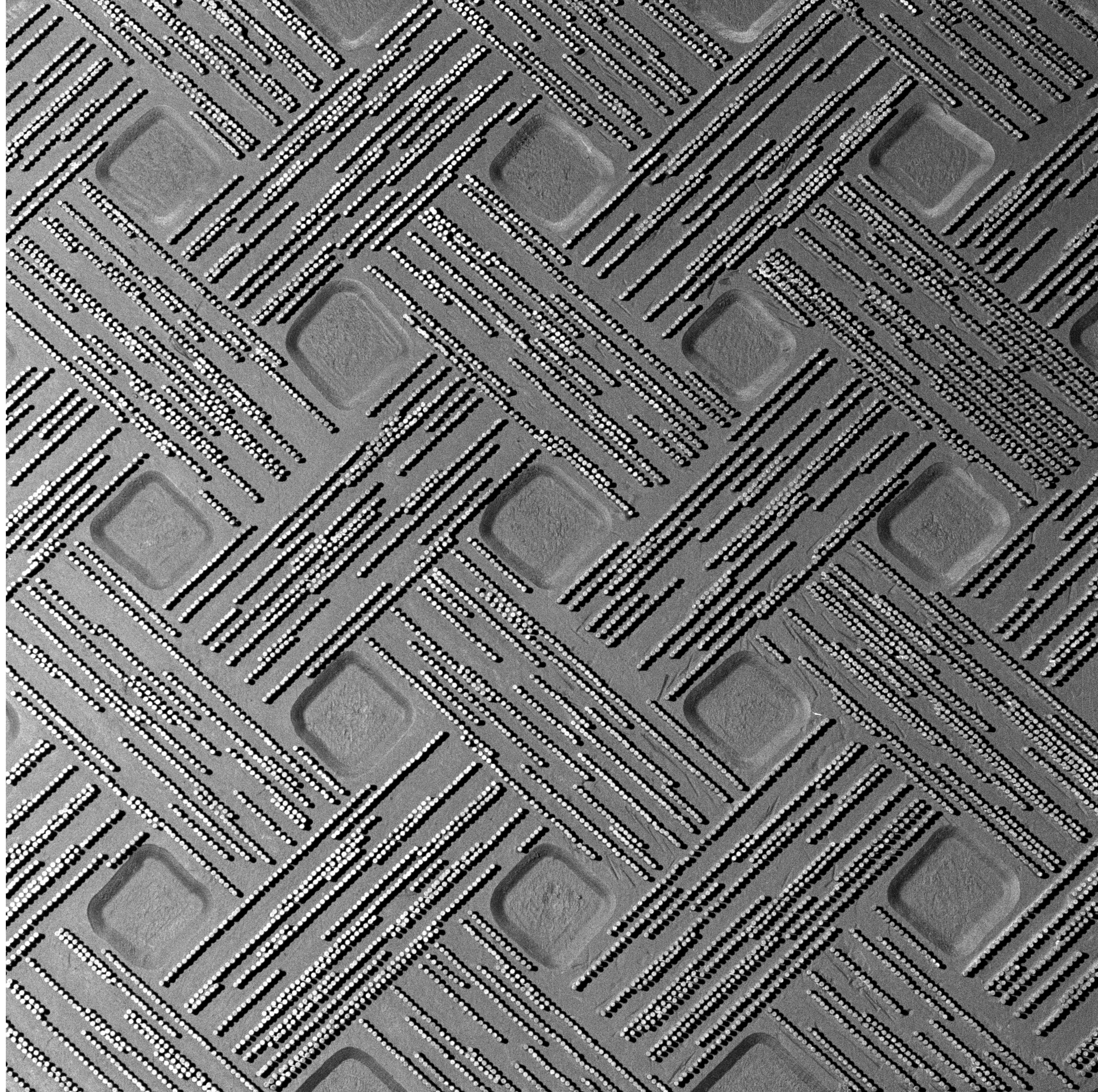
LINOLEUM PRINT BLOCK

Nairn's Linoleum South Factory,
Kirkcaldy, Fife

1986

This would have been used to print patterns
onto linoleum floor covering by hand.

SC1659253



RESPONSE

WELDING BENCH

Fabrication Shed, Shipyard,
Port Glasgow, Inverclyde
2009

There have been shipyards in this area of Port Glasgow since at least the 18th century. This shipyard site dates from about 1869. It has recently been rebuilt and is owned by Ferguson Marine Ltd.

DP069330

