

Date: August 2004
Client: Scottish Water
Project Code: MHS03

**Water Mains Renewal, Musselburgh, East
Lothian: Data Structure Report of an
Archaeological Watching Brief**

Mike Kimber

PROJECT SUMMARY SHEET (MHS03)

Client	Morgan Est, on behalf of Scottish Water	
National Grid Reference	NT 34 72 (area)	
Project Manager	Dr. Christopher Lowe	
Text	Mike Kimber	
Illustrations	Lisa Wilson Mike Kimber	
Specialist Reports	Julie Franklin Rosalind Gillis	
Sample Processing	Davie Masson	
Watching Brief	Stuart Buchanan Kelly Clapperton Magnar Dalland Kirsty Dingwall George Geddes Samantha Hatrick Colin Hewatt	Elizabeth Jones Mike Kimber Paul Masser Jonathan Millar Ross Murray Thomas Small
Schedule		
Fieldwork	March 2003 – May 2004	
Report	June – August 2004	

Summary

Following the discovery of a stone culvert on Inveresk Village Road, an archaeological watching brief was put in place to monitor all intrusive groundworks for the renewal of water services within the Musselburgh & Fisherrow Archaeologically Sensitive Area (as identified by the Scottish Burgh Survey: Dennison & Coleman 1996) and along Inveresk Village / Carberry Road to the south which lies adjacent to several Scheduled Ancient Monuments. The project was undertaken between March 2003 and May 2004. Unfortunately most of the trenching on Musselburgh High Street – one of the key areas of the medieval burgh – was undertaken prior to the commencement of the project and it therefore went largely unrecorded.

In addition to providing a large-scale survey of the archaeological landscape of medieval and later Musselburgh and Inveresk, the watching brief also identified several specific features or deposits associated with known monuments. These included the town's mill lade, the site of a pottery near Mansfield Avenue and a ditch, probably of Roman date, near the vicus of the Roman fort at Inveresk.

**WATER MAINS RENEWAL, MUSSELBURGH, EAST LOTHIAN
DATA STRUCTURE REPORT OF AN ARCHAEOLOGICAL WATCHING BRIEF**

CONTENTS

1. INTRODUCTION

2. METHOD

3. RESULTS

4. CONCLUSIONS

5. FURTHER WORK

6. ACKNOWLEDGEMENTS

7. REFERENCES

- Figure 1: Water mains renewal in Fisherrow, Musselburgh and Inveresk
Figure 2: Location of selected features - Fisherrow
Figure 3: Location of selected features - Musselburgh
Figure 4: Location of selected features - Inveresk
Figure 5: Measured sketch of probable Roman ditch (Trench 200: Inveresk Brae)

APPENDIX 1: Registers

- 1.1 Trench register, sorted by street
- 1.2 Trench register, sorted by trench number
- 1.3 Context register
- 1.4 Sketch record sheet register
- 1.5 Drawing register
- 1.6 Photo register
- 1.7 Finds register
- 1.8 Sample register

APPENDIX 2: Sample assessment

APPENDIX 3: Finds assessment

1. INTRODUCTION

Headland Archaeology Ltd was commissioned to carry out an archaeological watching brief within Musselburgh / Fisherrow and Inveresk on the renewal of water services by Scottish Water between March 2003 and May 2004. This followed the discovery of a stone culvert on Inveresk Village Road, roughly opposite Inveresk Lodge.

The work involved both open-cut trenching and smaller interventions in the roads and pavements of large parts of the burgh. Guided by the area of archaeological potential suggested by the Scottish Burgh Survey for Musselburgh (Dennison & Coleman 1996; see Figure 1), the watching brief covered most streets within the town centre. In Inveresk, monitoring was extended outwith this area along Inveresk Village Road and Carberry Road due to the proximity of several Scheduled Ancient Monuments, archaeological sites and stray finds in the area (eg NT37SE 34, NT37SE 35, NT37SE 36, NT37SE 92, NT37SW 20, NT37SW 186, SAM3610 and SAM3611). The objective of the watching brief was to preserve by record any archaeological remains impacted by the programme of works.

Background

Musselburgh is situated on low-lying land at the mouth of the River Esk, East Lothian. Historically, Musselburgh proper is the part of the town on the east bank of the Esk, while the settlement on the west bank is known as Fisherrow. Inveresk is a small village to the south of Musselburgh, occupying an area of higher ground overlooking the town.

The first major settlement around Musselburgh was the Antonine period Roman fort and Vicus at Inveresk (NT37SW 8.00). St Michael's church and much of central Inveresk now occupy the sites of these monuments. The fort and vicus account for the bulk of the scheduled areas in Musselburgh and Inveresk (SAM1182, SAM3267, SAM3285, SAM3293 and SAM3612; see Figure 1). Work on Inveresk Brae, which runs between two scheduled areas (SAM1182 & SAM3267; Figure 1), was likely to disturb Roman remains (Bishop 2002).

The modern day settlements of Musselburgh and Inveresk have origins at least as early as the 11th century AD, as possessions of Dunfermline Abbey. Musselburgh was granted burghal status in the late 12th Century (Dennison & Coleman 1996: 16–17). The core of the medieval settlement is thought to have been located near to the medieval or 'Old Bridge' over the Esk (NT37SW 5.00; see Figure 1), and to have expanded eastwards along the line of the High Street throughout the medieval period (Dennison & Coleman 1996: 18–19). Any digging in this area would have the potential to disturb medieval deposits, probably relating to the early settlement and its development.

Musselburgh, Fisherrow and Inveresk are all marked on Adair's 1682 map of Midlothian. On the whole, the towns look much the same then as they do today. In Musselburgh, the High Street and Inveresk Brae are the main streets shown. In Fisherrow, Market Street and North High Street appear on the map, separated by gardens or backlands. This suggests that these streets were fairly long established thoroughfares, making the discovery of significant medieval or later occupation deposits beneath the road surface unlikely. Laurie's map of 1763 shows the area in rather more detail, confirming the existence by this time of Hercus Loan, Lochend Road South and New Street in Fisherrow, Inveresk Road, Millhill and Pinkie Road in Musselburgh, and Inveresk Village Road and Carberry Road in Inveresk. Given the difficulty of comparing pre-Ordnance Survey maps with modern plans, it is not possible to say whether the exact position of these streets has changed over time.

One notable addition to the post-medieval street plan of Fisherrow is Bridge Street, first shown on Knox's map of 1816. This street connects North High Street in Fisherrow and High Street in Musselburgh, via the New Bridge (NT37SW 81), which was built in 1806-07 (Figure 1). Bridge Street was built through a previously lightly-developed area. Therefore, any archaeological deposits in this area could be expected to differ in character to those from the well-established thoroughfares.

Later additions to the street plan of Musselburgh proper, such as Mansfield Gardens and Kilwinning Terrace appear to have largely been on open gardens and backlands to the south of the town. This area was largely undeveloped until the 20th century, with the exception of a pottery and a confectionery works, shown on the Ordnance Survey 1854 and 1895 maps of the town.

2. METHOD

The archaeological watching brief of all groundworks – including open cut trenching as well as key-hole excavation over existing services – was maintained throughout the Archaeologically Sensitive Area of the burgh and along Carberry Road.

A register was compiled of all recorded trenches (Appendices 1.1 & 1.2), and the location of each trench was plotted on an OS 1:1,000 street plan. Where archaeological remains were present, context numbers were assigned and section drawings were made at scale 1:50, 1:20 or 1:10, depending on the complexity of the remains (Appendices 1.4 & 1.5). In long trenches, sample sections were recorded at regular 10 m intervals when archaeological deposits were present. In some cases access to trenches was not possible, either due to their depth or, on the High Street, due to flooding caused by high tide, but sections were inspected and recorded wherever possible. Photography was also problematic because of the narrowness of the trenches and low angle light, but where possible colour print and colour transparencies were taken (Appendix 1.6).

Bulk samples were taken systematically in accordance with Headland Archaeology Ltd standard environmental sampling practice for wet sieving and flotation. These have been processed and the assessment forms part of this report (Appendix 2).

All artefacts have been washed, labelled and stored in appropriate conditions. The finds assessment also forms part of this report (Appendix 3).

3. RESULTS (Figures 1 – 5)

The extent and locations of all trenching work monitored – as well as the type of work monitored (whether open-cut trenching or slip-lining) – is shown in Figure 1. A summary of the archaeological remains discovered and their location can be found in Appendix 1.1, sorted by street, and in Appendix 1.2, sorted by trench number. The context list is also sorted by trench number (see Appendix 1.3 for a full explanation) and allows for cross-referencing between these tables. The principal results of the watching brief are summarised here and the locations of selected features are illustrated in Figures 2 – 4.

The type of work taking place in each area heavily influenced the impact of the works on archaeological remains. In streets where the new mains were installed using pipe-bursting or slip-lining techniques very little archaeology was disturbed, as these methods involved the excavation of small trenches in disturbed ground over the existing main. Likewise, the replacement of house-to-main services required only small trenches over the old service, and the majority of the deposits in these trenches were also disturbed. In contrast, archaeological remains were frequently disturbed when the new mains were installed in open cut trenches, although in some cases the new pipe track lay directly alongside other services, effectively in disturbed ground.

North High Street, Fisherrow

Open cut trenching along both sides of North High Street exposed a concentration of deposits and features located between its junctions with Lochend Road North and Bridge Street. In general, most of the archaeological deposits consisted of one or two horizons stratified between the natural sands and gravels and modern road material, or as single fills of cut features. The deposits were all very similar, usually being dark brown sandy silts, often containing fragments of marine shell, or occasionally complete shells, most frequently oyster and whelk. The pottery recovered from these deposits dated from between the 16th and the 19th centuries. Several cut features identified at the junction with South Street appeared to be large ditches or pits running north–south (T 520/007, T599/005, T605/005, T605/006; see Figure 2).

Bridge Street, Fisherrow

Although both sides of Bridge Street were open-cut, all of the trenching on the north-eastern side lay within old service trenches and very little archaeology was disturbed there. On the south-western side of the road, the archaeological remains were fairly evenly spaced along the length of the street, and generally consisted of layers and pockets of sandy silts similar to those from North High Street, containing marine shell and occasional fragments of pottery, mostly 17th–19th century in date, but with occasional residual fragments of medieval White Gritty ware.

High Street, Musselburgh

Open cut trenching was monitored on High Street between the Mercat Cross and East Port, and house-to-main services were recorded along the length of the street. Unfortunately, archaeological monitoring of the project did not commence until substantial sections of open-cut trench on the High Street had already been dug and backfilled.

A deposit of shell midden containing White Gritty ware (T039/039), deposits containing shell and coal fragments (T036/036, T105/003) and a shallow cut feature (T030/030) filled with midden material containing White Gritty ware (T030/029) were all recorded along the north side of the High Street, between the East Port and No. 29 High Street. On the southern side of the same stretch of street, trenching revealed dark organic deposits containing fragments of shells (T002/009, T005/009). More shallow cut features (T010/027, T128/008) were identified, along with a possible lime mortar and cobble-built wall footing (T128/006; see Figure 3). Thick layers of wind-blown sand, some containing 18th–19th century pottery (eg T002/006), covered many of the deposits.

Towards the western end of the High Street, by No. 83, service trenches revealed part of a cut feature containing an animal bone (T003/018; see Figure 3) and a deposit containing animal bone and marine shell (T006/022).

Inveresk Brae, Musselburgh

Open-cut trenching on the Brae revealed several archaeological features between its junction with Rothesay Place to the north and Inveresk Village Road to the south (see Figures 4). There was a considerable depth of made ground (T278/003, T278/007, T278/008, T271/002; Figures 3 & 4) towards the north end of this area, which caused problems of access into the trenches. Between 0.5 and 0.8m of this material overlay a number of soils and sediments containing fragments of shells and charcoal (T278/009, T278/012, T278/013) and a narrow cut feature (T278/005; see Figure 4), all in the vicinity of the sports centre. Further south along Inveresk Brae, a lime mortar and rubble wall footing (T271/003; Figure 4), two courses high, 0.4m wide and aligned NE – SW, extended across the trench over a distance of 6m. It was buried by approximately 1m of redeposited sand and gravel (T271/002).

Further south, in Trench 199, the layers of redeposited sand and gravel overlay a dark brown buried soil deposit (T199/007), which contained a number of brick and tile sherds, possibly of Roman date. This deposit continued up the slope to the south in Trench 200 (T200/003), where large pieces of Roman tile were recovered, including a combed box flue tile. Approximately level with the northern boundary of SAM 3267 (see Figure 1) the pipe track crossed through a 6.5m wide cut feature, which appeared to represent the cut of a wide, shallow ditch (T200/012; see Figures 4 & 5). A small and abraded sherd of Samian ware and a fragment of Roman tile were recovered from the largest deposit of backfill (T200/005).

Mansfield Avenue, Musselburgh

Open cut trenching along the east side of Mansfield Avenue, towards the south end of the street, uncovered a substantial 2.5 m wide ditch or pit (T069/004; see Figure 3) filled with sand and large quantities of broken white china (T069/003). A large deposit of brick and mortar demolition rubble, again rich in white china (T069/006), was present in the northern end of the trench. It is likely that these deposits are related to the nearby pottery which is shown on the Ordnance Survey maps of 1854 and 1894 (see Figure 3) Several other narrow cut features crossing the northward continuation of this trench (T068/004, T068/008, T068/011, T068/013; see Figure 3) were filled with what appeared to be a homogenous cultivation soil.

Structures

The most frequent types of structure encountered in the watching brief were sandstone culverts. In addition to the example on Inveresk Village Road (T899/002; see Figure 4), which was uncovered over a distance of 250 m along the road, a number of stone-built culverts were also identified on Bridge Street, Inveresk Brae, Linkfield Road, North High Street and Pinkie Road (see Figures 2 – 4). A potentially early example (T485/006), located on North High Street, was the only culvert to be discovered which had been constructed without base-stones. Although a tiny fragment of pottery recovered from the fill was modern in date, this does not necessarily date the construction of the culvert.

Trenching in Kerr's Wynd cut across a section of the town mill lade (T264/007; see Figure 3), which appears on maps of the town from as early as 1816, diverting water from the Esk for industrial use. At Kerr's Wynd, the lade was bridged by a vaulted sandstone arch, 3.5m wide, which rested on substantial sandstone and brick walls. The mill lade is still active, and a modern pipe carries the flow of water from the River Esk to the coast.

Several wall footings of probably relatively recent date were also noted. At the north end of Mansfield Avenue a lime-mortar bonded sandstone and tile wall footing (T272/004; see Figure 3) was observed crossing the trench directly in line with an existing wall on the eastern

side of the street. This is likely to be post-medieval in date, and to be part of the southern boundary of the plots of land behind the High Street that appear on the OS 1st edition map of 1854.

On North High Street, at the junction with Fishers Wynd, a lime-mortar bonded wall footing (T848/011; see Figure 2) constructed of sandstone blocks sat in a vertical sided cut, which contained 18th and 19th century pottery and glass (T848/012). The nature of this feature is unclear, as it does not appear to correspond with any existing buildings. This suggests that it may relate to the minor changes to the street plan of this area, which appear to have taken place after the town was mapped in 1895.

Several service trenches on Inveresk Road crossed the line of a steep-sided cut filled with broken sandstone rubble (T227/003, T228/003; see Figure 3). This is probably the remains of a foundation for an earlier boundary wall to this road, predating the modern housing on either side of the street.

4. CONCLUSIONS

Archaeological monitoring of the renewal of water services in Musselburgh, Fisherrow and Inveresk was successful in locating or confirming the presence of concentrations of archaeological remains beneath the roads of the burgh. Effective mitigation of impacts to these remains caused by the programme of works was also possible, once archaeologists began working alongside the principal contractor. However, the data from this project are unlikely to have generated a complete picture of the archaeological potential of all streets within Musselburgh and Inveresk, due to the different types of work undertaken. For example, on the High Street, a known area of high archaeological potential, the common occurrence of archaeological remains in open-cut trenches can be contrasted with the very rare occasions when house-to-main services disturbed archaeological deposits (Appendix 1.1). This suggests that it would be unwise to draw any conclusions about the distribution of archaeological remains in areas where no open-cut trenching took place, for example, in the vicinity of the Old Bridge (Figure 1).

With the above caveat in mind, it seems reasonably clear that as far as the roads are concerned, the main concentration of medieval and later deposits in Musselburgh and Fisherrow lies well within the archaeologically sensitive area suggested by the Scottish Burgh Survey, probably centred on the High Street. With regard to particularly sensitive areas, it is likely that digging in the vicinity of the scheduled areas in central Inveresk could disturb remains related to the Roman fort and vicus, while digging along the High Street is likely to disturb medieval deposits relating to the formation and growth of the medieval burgh. Remains discovered towards the periphery of the sensitive area seemed almost exclusively to be sandstone culverts, probably dating to the 17th century or later.

5. FURTHER WORK

A publication report will be prepared in due course. This will deal with the data from this project in greater detail and contrast it with the results of a similar project carried out in North Berwick.

6. ACKNOWLEDGEMENTS

Bridget Simpson curated the project on behalf of East Lothian Council. The smooth running of the project was helped greatly by the cooperation of the principal contractor, Morgan Est, of their sub-contractors, and of Scottish Water staff, who provided information on the project schedule.

7. REFERENCES

Bibliography

Bishop, M.C. (ed) 2002 *Roman Inveresk: Past, Present and Future*. Armatura: Duns.

Dennison, P. E. & Coleman, R 1996 *Historic Musselburgh: the archaeological implications of development*. Scottish Burgh Survey report. Historic Scotland in association with Scottish Cultural Press: Edinburgh.

Scheduled Ancient Monuments (SAMs)

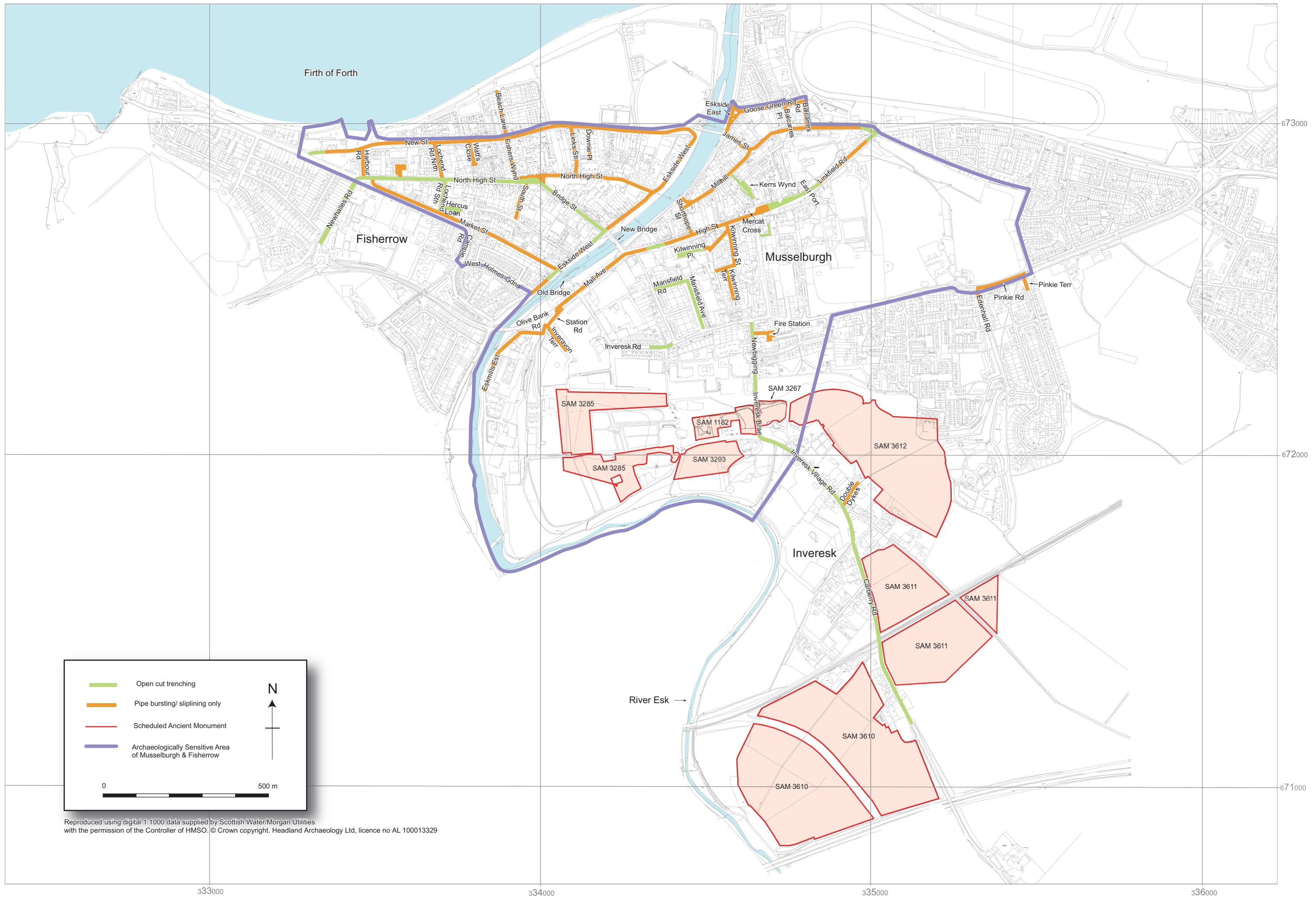
1182	Inveresk House, Roman civil settlement, Inveresk
3267	Eskgrove, Roman civil settlement north of
3285	Inveresk, Roman fort and civil settlement
3293	Inveresk, Roman civil settlement W of Inveresk Gate
3610	Monktonhall Junction, Roman camps and prehistoric settlement
3611	Pinkiehill, field system 300 m south of
3612	Lewisvale Public Park, Roman works and field systems S of

National Monuments Record

NT37SE 34	Ditches; Roman Coin; Pottery; Field-System (Possible): Pinkiehill
NT37SE 35	Roman Pottery; Roman Coin; Iron Spearhead: Midfield Mains
NT37SE 36	Cists: Inveresk, Westfield
NT37SE 92	Burials: Inveresk, Carberry Road
NT37SW 5.00	Musselburgh, Old Bridge
NT37SW 8.00	Inveresk, Musselburgh, Roman Fort
NT37SW 20	Roman Pottery: Inveresk, Wedderburn House
NT37SW 81	Musselburgh, New Bridge
NT37SW 186	Linear Cropmark: Ricruin

Cartographic sources

1682	Adair, J <i>Map of Midlothian</i> , Edinburgh
1735	Laurie, J <i>A Plan of the County of Midlothian</i> , Edinburgh
1816	Knox, J <i>Map of the Shire of Edinburgh</i> , Edinburgh
1854	Ordnance Survey <i>Edinburghshire 1:10 560 scale map Sheet 7</i> , (surveyed 1852)
1894	Ordnance Survey <i>Musselburgh 1:500 scale map Sheets IV.7.24, IV.11.3, IV.11.4, IV.11.8</i> (surveyed 1893)
1895	Ordnance Survey <i>Edinburghshire 1:2500 scale map Sheet IV 7 & 11</i> (resurveyed 1893)



— Open cut trenching
— Pipe bursting/ sliplining only
— Scheduled Ancient Monument
— Archaeologically Sensitive Area of Musselburgh & Fisherrow

N
↑

0 ————— 500 m

Reproduced using digital 1:1000 data supplied by Scottish Water/Morgan Utilities with the permission of the Controller of HMSO. © Crown copyright. Headland Archaeology Ltd, licence no AL 100013329

Figure 1: Water mains renewal in Fisherrow, Musselburgh and Inveresk.

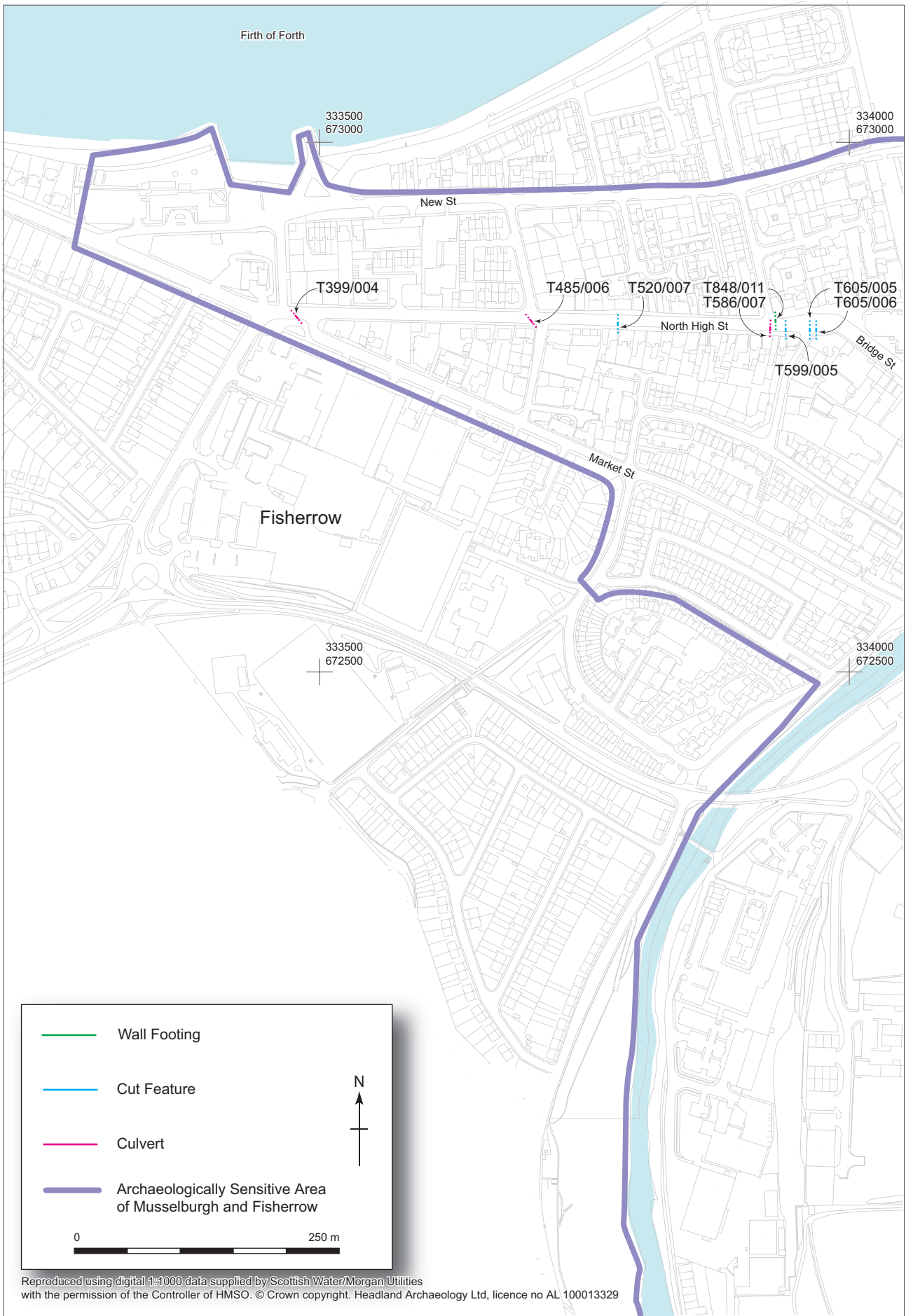


Figure 2 Location of selected features - Fisherrow

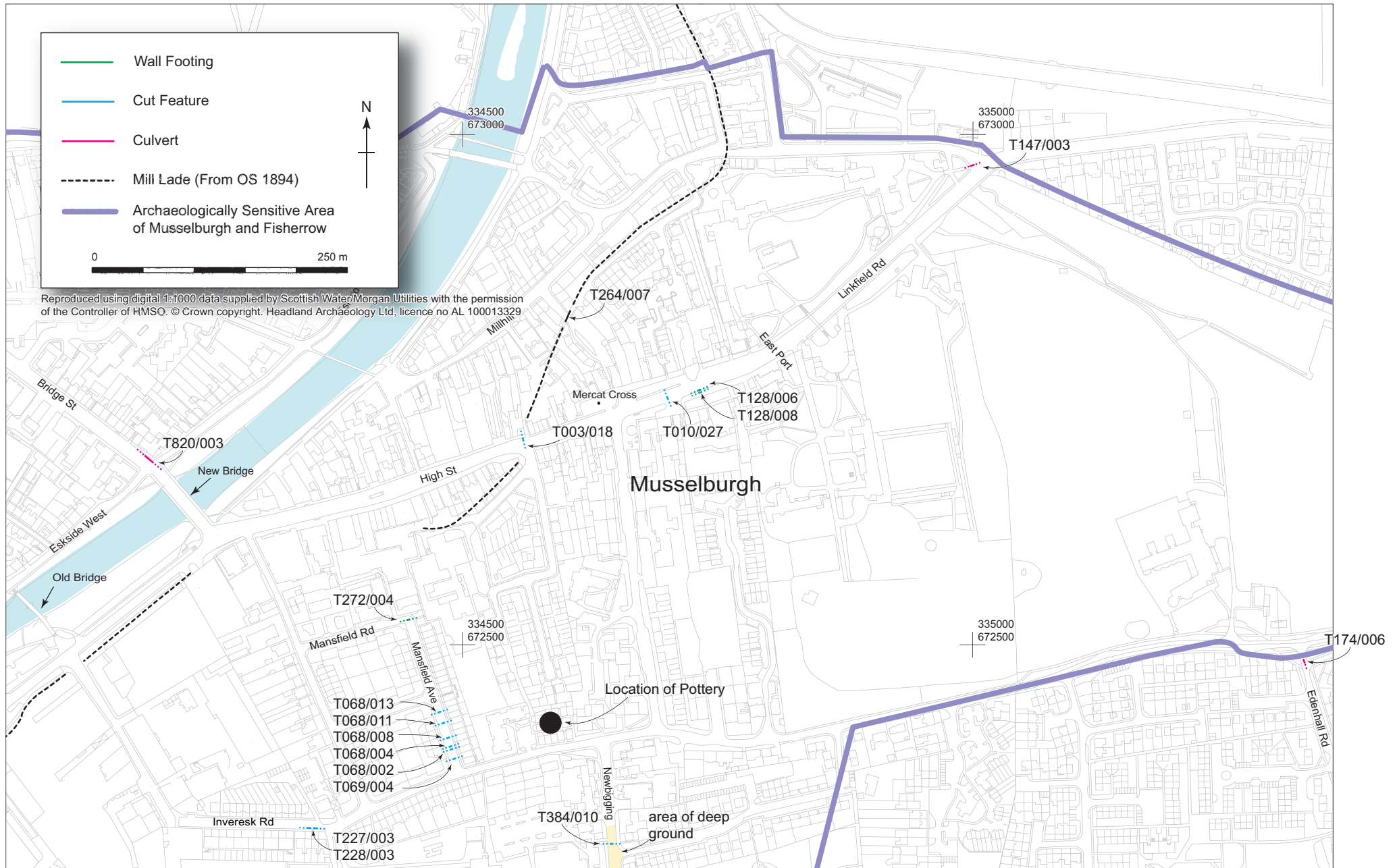


Figure 3: Location of selected features - Musselburgh

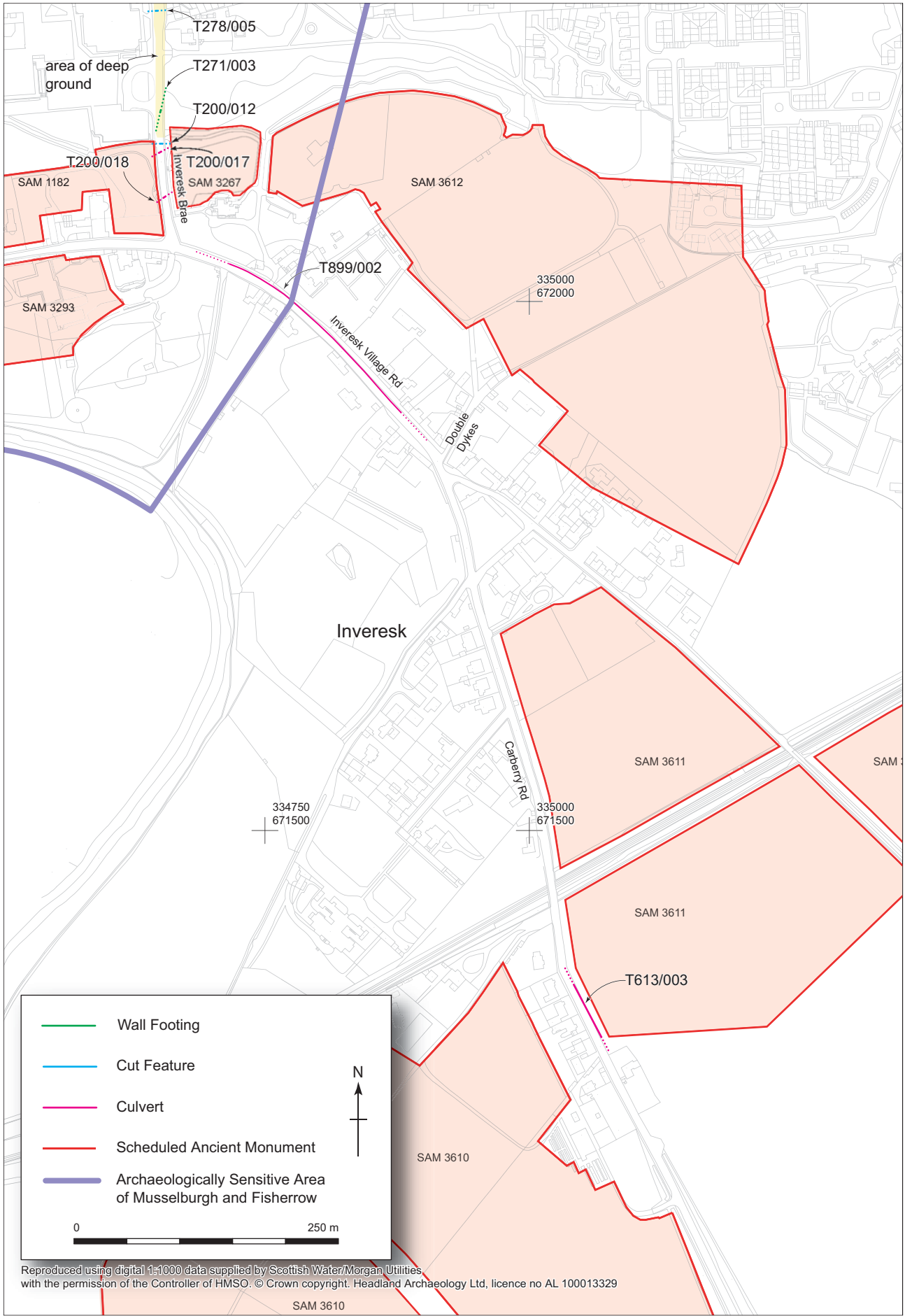


Figure 4: Location of selected features - Inveresk

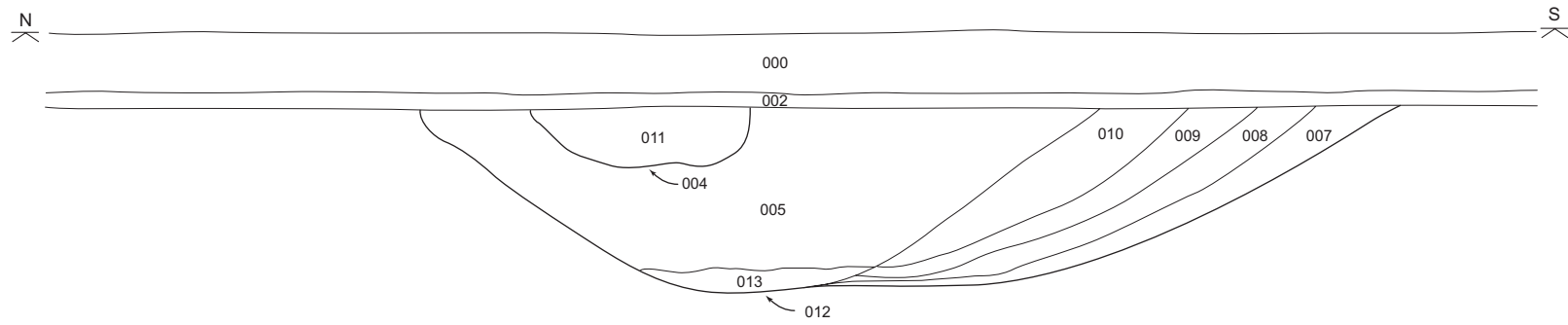


Figure 5: Measured sketch of probable Roman ditch, Trench 200, Inveresk Brae.

APPENDIX 1: REGISTERS

1.1 Trench register, sorted by street

Location	Trench No.	Comments	Type
Balcarres Place	221		Over main
Balcarres Place	222		Over main
Balcarres Place	237		Service
Balcarres Place	238		Service
Balcarres Road	44		Service
Balcarres Road	45		Service
Balcarres Road	46		Service
Balcarres Road	47		Service
Balcarres Road	48		Service
Balcarres Road	52		Over main
Balcarres Road	53		Over main
Balcarres Road	54		Service
Balcarres Road	217		Over main
Balcarres Road	458		Open-cut
Beach Lane	470		Over main
Beach Lane	471		Over main
Beach Lane	472		Over main
Beach Lane	473		Service
Beach Lane	474		Over main
Beach Lane	475		Over main
Beach Lane	476		Over main
Beach Lane	477		Service
Beach Lane	478		Over main
Beach Lane	479		Over main
Beach Lane	480		Over main
Beach Lane	481	Sandstone wall footing, mortar bonded	Over main
Bridge Street	612	Deposit containing marine shell	Open-cut
Bridge Street	625		Open-cut
Bridge Street	637		Open-cut
Bridge Street	659	Cultivation soil or midden, contained shell, coal, pottery	Open-cut
Bridge Street	664	Midden deposit, contained marine shell	Open-cut
Bridge Street	665	Midden deposit, contained marine shell	Open-cut
Bridge Street	666	Deposit containing marine shell	Open-cut
Bridge Street	780		Service
Bridge Street	781		Service
Bridge Street	782		Over main
Bridge Street	783		Service
Bridge Street	784		Service
Bridge Street	820	Mortar bonded sandstone & brick culvert	Open-cut
Bridge Street	821		Open-cut
Bridge Street	822		Open-cut
Bridge Street	841		Open-cut
Bridge Street	842	Deposit containing oyster shell	Open-cut

1.1 Trench register, sorted by street

Location	Trench No.	Comments	Type
Bridge Street	843		Service
Bridge Street	844		Service
Bridge Street	845		Service
Bridge Street	846		Service
Bridge Street	847	Cultivation soil	Open-cut
Bridge Street	870		Service
Bridge Street	871		Service
Bridge Street	872		Service
Bridge Street	873		Service
Bridge Street	874		Service
Bridge Street	875		Service
Bridge Street	876		Service
Carberry Road	527	Ploughsoil	Open-cut
Carberry Road	555		Open-cut
Carberry Road	598		Open-cut
Carberry Road	607		Open-cut
Carberry Road	613	Unbonded sandstone culvert	Open-cut
Carberry Road	626		Open-cut
Carberry Road	678		Open-cut
Carberry Road	693		Open-cut
Carberry Road	740		Open-cut
Carberry Road	768		Open-cut
Carberry Road	769		Open-cut
Carberry Road	772		Open-cut
Carberry Road	788		Over main
Carberry Road	789		Over main
Carberry Road	824		Service
Carberry Road	825		Service
Carberry Road	826		Service
Carberry Road	827		Service
Carberry Road	828		Service
Carberry Road	829		Service
Carberry Road	830		Service
Carberry Road	831		Service
Carberry Road	899	Sandstone culvert	Open-cut
Double Dykes	459		Over main
Double Dykes	460		Over main
Double Dykes	461		Over main
Double Dykes	462		Over main
Double Dykes	463		Over main
Double Dykes	464		Over main
Downie Place	570		Over main
Downie Place	571		Over main
Downie Place	572		Over main

1.1 Trench register, sorted by street

Location	Trench No.	Comments	Type
Downie Place	573		Over main
Downie Place	574		Over main
Downie Place	575		Over main
Downie Place	576		Over main
Downie Place	577		Over main
Downie Place	578		Over main
Downie Place	579		Over main
Downie Place	580		Over main
Downie Place	581		Over main
Downie Place	582	Cultivation soil with occasional bone fragments	Over main
Downie Place	584	Cultivation soil with occasional bone fragments	Over main
Downie Place	585		Open-cut
Edenhall Road	184		Over main
Eskmills Estate	419		Over main
Eskmills Estate	420		Over main
Eskmills Estate	421		Over main
Eskmills Estate	422		Over main
Eskmills Estate	424		Over main
Eskmills Estate	426		Over main
Eskmills Estate	429		Over main
Ekside East	12		Over main
Ekside East	13		Over main
Ekside East	14		Over main
Ekside East	15		Over main
Ekside East	16		Over main
Ekside East	17		Over main
Ekside East	26		Over main
Ekside East	27		Over main
Ekside East	34		Over main
Ekside East	35		Over main
Ekside West	627		Over main
Ekside West	628		Over main
Ekside West	629		Over main
Ekside West	630		Over main
Ekside West	663		Over main
Ekside West	667		Over main
Ekside West	695		Over main
Ekside West	696		Over main
Ekside West	697		Over main
Ekside West	698		Over main
Ekside West	735		Over main

1.1 Trench register, sorted by street

Location	Trench No.	Comments	Type
Ekside West	736		Over main
Ekside West	737		Over main
Ekside West	738		Over main
Ekside West	739		Over main
Ekside West	757	Midden deposits	Open-cut
Ekside West	758		Open-cut
Ekside West	759		Open-cut
Ekside West	771		Open-cut
Ekside West	786		Service
Ekside West	787		Service
Ekside West	801		Over main
Ekside West	802		Over main
Ekside West	803		Over main
Ekside West	804		Over main
Ekside West	805		Over main
Ekside West	812		Over main
Ekside West	813		Over main
Ekside West	814		Over main
Ekside West	815		Over main
Ekside West	816		Over main
Ekside West	817		Over main
Ekside West	818		Over main
Ekside West	819		Over main
Ekside West	823		Over main
Fire Station	522		Over main
Fire Station	523		Over main
Fire Station	524		Over main
Fire Station	525		Over main
Fire Station	526		Over main
Fishers Wynd	486		Over main
Fishers Wynd	487		Over main
Fishers Wynd	488		Over main
Fishers Wynd	489		Service
Fishers Wynd	490		Over main
Fishers Wynd	491		Over main
Fishers Wynd	492		Service
Fishers Wynd	497		Over main
Fishers Wynd	498		Over main
Fishers Wynd	499		Over main
Fishers Wynd	500		Over main
Fishers Wynd	501		Over main
Fishers Wynd	502		Over main
Fishers Wynd	508		Over main
Fishers Wynd	509		Over main
Fishers Wynd	510		Service

1.1 Trench register, sorted by street

Location	Trench No.	Comments	Type
Fishers Wynd	511		Service
Fishers Wynd	512		Service
Fishers Wynd	513		Service
Fishers Wynd	849		Open-cut
Goose Green Rd	18		Over main
Goose Green Rd	19		Over main
Goose Green Rd	214		Over main
Harbour Road	741		Over main
Harbour Road	742		Over main
Harbour Road	743		Over main
Harbour Road	744		Over main
Harbour Road	745		Over main
Harbour Road	746		Over main
Harbour Road	747		Over main
Hercus Loan	791		Open-cut
Hercus Loan	792		Open-cut
Hercus Loan	793		Open-cut
High Street	1		Open-cut
High Street	2	Midden, pottery	Open-cut
High Street	3	Pit	Open-cut
High Street	4		Open-cut
High Street	5		Open-cut
High Street	6	Midden, bone	Service
High Street	7		Service
High Street	8		Open-cut
High Street	9		Service
High Street	10	Cut feature, oyster shell	Open-cut
High Street	11		Service
High Street	20		Open-cut
High Street	21		Service
High Street	25		Service
High Street	28		Open-cut
High Street	29		Service
High Street	30	Cut feature, charcoal, shell fragments	Open-cut
High Street	36	Deposit containing shell, coal fragments	Open-cut
High Street	39	Shell midden, white gritty pottery	Open-cut
High Street	49		Service
High Street	50		Service
High Street	51		Service
High Street	55		Service
High Street	56		Open-cut
High Street	57		Service
High Street	58		Service

1.1 Trench register, sorted by street

Location	Trench No.	Comments	Type
High Street	59		Service
High Street	60		Service
High Street	61		Service
High Street	62		Service
High Street	63		Service
High Street	64		Service
High Street	65		Service
High Street	71		Service
High Street	94		Service
High Street	105	Deposit containing crushed shell, charcoal	Service
High Street	107		Service
High Street	108		Service
High Street	109	Deposit containing crushed shell, charcoal, pottery	Service
High Street	116		Service
High Street	117		Service
High Street	118		Service
High Street	119		Open-cut
High Street	120		Service
High Street	128	Possible wall footing, possible cut	Open-cut
High Street	132		Service
High Street	133		Service
High Street	135		Service
High Street	137		Service
High Street	145		Service
High Street	149		Service
High Street	280		Open-cut
Inveravon Terrace	413		Trial hole
Inveravon Terrace	414	C19th deposits	Over main
Inveresk Brae	189		Trial hole
Inveresk Brae	195		Trial hole
Inveresk Brae	196		Trial hole
Inveresk Brae	199	Charcoal rich deposit, contained marine shell, brick and bone	Open-cut
Inveresk Brae	200	Complex ditch sequence, possible Roman date; sandstone culvert	Open-cut
Inveresk Brae	216		Open-cut
Inveresk Brae	271	Lime mortar bonded rubble wall; very deep made ground	Open-cut
Inveresk Brae	278	Cut feature, fill contained shell fragments, other similar deposits	Open-cut
Inveresk Brae	384	Cut feature	Open-cut
Inveresk Brae	400		Open-cut
Inveresk Brae	402		Open-cut
Inveresk Brae	403		Open-cut

1.1 Trench register, sorted by street

Location	Trench No.	Comments	Type
Inveresk Brae	404		Open-cut
Inveresk Brae	410		Open-cut
Inveresk Brae	411		Service
Inveresk Brae	425		Open-cut
Inveresk Brae	432		Open-cut
Inveresk Brae	433		Open-cut
Inveresk Brae	521		Over main
Inveresk Brae	806		Service
Inveresk Brae	807		Service
Inveresk Brae	808		Service
Inveresk Brae	810		Service
Inveresk Brae	851		Service
Inveresk Brae	852		Service
Inveresk Brae	854		Service
Inveresk Brae	855		Service
Inveresk Brae	867		Open-cut
Inveresk Brae	868		Open-cut
Inveresk Road	158	Cultivation soil	Open-cut
Inveresk Road	169	Cultivation soil with marine shell and coal; sandstone and shell mortar wall footing	Open-cut
Inveresk Road	197		Service
Inveresk Road	198		Service
Inveresk Road	201		Service
Inveresk Road	202		Service
Inveresk Road	203		Service
Inveresk Road	204		Service
Inveresk Road	205		Service
Inveresk Road	206		Service
Inveresk Road	226		Service
Inveresk Road	227	Linear feature filled with sandstone rubble	Service
Inveresk Road	228	Linear feature filled with sandstone rubble	Service
Inveresk Road	811		Open-cut
Inveresk Village Rd	220	C19th demolition rubble	Open-cut
Inveresk Village Rd	493		Service
Inveresk Village Rd	494		Service
Inveresk Village Rd	495		Service
Inveresk Village Rd	496		Over main
Inveresk Village Rd	503		Over main
Inveresk Village Rd	504		Over main
Inveresk Village Rd	505		Over main
Inveresk Village Rd	506		Over main
Inveresk Village Rd	507		Over main
Inveresk Village Rd	516		Over main
Inveresk Village Rd	517		Over main
Inveresk Village Rd	518		Over main

1.1 Trench register, sorted by street

Location	Trench No.	Comments	Type
Inveresk Village Rd	519		Over main
Inveresk Village Rd	528		Over main
Inveresk Village Rd	529		Over main
Inveresk Village Rd	790		Open-cut
Inveresk Village Rd	833		Over main
Inveresk Village Rd	834		Over main
Inveresk Village Rd	835		Over main
Inveresk Village Rd	836		Over main
Inveresk Village Rd	837		Over main
Inveresk Village Rd	838		Over main
Inveresk Village Rd	839		Over main
Inveresk Village Rd	840		Over main
James Street	22		Over main
James Street	23		Over main
James Street	24		Over main
James Street	31		Over main
James Street	32		Over main
James Street	33		Over main
James Street	37		Over main
James Street	38		Over main
James Street	42		Over main
James Street	43		Over main
Kerrs Wynd	171		Service
Kerrs Wynd	172		Service
Kerrs Wynd	173		Service
Kerrs Wynd	263	Deposits rich in charcoal	Open-cut
Kerrs Wynd	264	Mill lade	Open-cut
Kerrs Wynd	265		Open-cut
Kerrs Wynd	266		Open-cut
Kerrs Wynd	284		Service
Kerrs Wynd	285	Deposit containing charcoal & shell fragments	Service
Kerrs Wynd	291		Service
Kerrs Wynd	292		Service
Kerrs Wynd	307		Service
Kilwinning Car Park	283		Open-cut
Kilwinning Car Park	308		Open-cut
Kilwinning Car Park	311	Mortar bonded sandstone blocks, deposit containing oyster shells, cut feature	Open-cut
Kilwinning Place	282		Trial hole
Kilwinning Place	324		Open-cut
Kilwinning Place	325		Service
Kilwinning Place	326		Over main

1.1 Trench register, sorted by street

Location	Trench No.	Comments	Type
Kilwinning Place	327		Over main
Kilwinning Place	328		Over main
Kilwinning Place	379		Over main
Kilwinning Place	380		Over main
Kilwinning Place	381		Over main
Kilwinning Place	382		Service
Kilwinning Street	383		Over main
Kilwinning Street	385		Over main
Kilwinning Street	386		Service
Kilwinning Street	387		Over main
Kilwinning Street	388		Service
Kilwinning Street	389		Over main
Kilwinning Street	390		Service
Kilwinning Street	391		Service
Kilwinning Street	392		Over main
Kilwinning Street	393		Service
Kilwinning Street	394		Service
Kilwinning Street	395		Over main
Kilwinning Street	396		Service
Kilwinning Street	397		Over main
Kilwinning Street	398	Cultivation soil	Over main
Kilwinning Street	401		Service
Kilwinning Terrace	286	Cultivation soil	Service
Kilwinning Terrace	287	Cultivation soil	Service
Kilwinning Terrace	288	Cultivation soil	Service
Kilwinning Terrace	289	Cultivation soil	Service
Kilwinning Terrace	290	Cultivation soil	Service
Kilwinning Terrace	293	Cultivation soil	Over main
Kilwinning Terrace	294	Cultivation soil	Service
Kilwinning Terrace	295	Cultivation soil	Over main
Kilwinning Terrace	296	Cultivation soil	Service
Kilwinning Terrace	297	Cultivation soil	Over main
Kilwinning Terrace	298	Cultivation soil	Service
Kilwinning Terrace	299	Cultivation soil	Service
Kilwinning Terrace	300	Cultivation soil	Over main
Kilwinning Terrace	301	Cultivation soil	Service
Kilwinning Terrace	302	Cultivation soil	Over main
Kilwinning Terrace	303	Cultivation soil	Service
Kilwinning Terrace	304	Cultivation soil	Service
Kilwinning Terrace	305	Cultivation soil	Service
Kilwinning Terrace	306	Cultivation soil	Service
Kilwinning Terrace	309	Cultivation soil	Over main
Kilwinning Terrace	310	Cultivation soil	Over main
Kilwinning Terrace	313	Cultivation soil	Over main
Kilwinning Terrace	314	Cultivation soil	Service

1.1 Trench register, sorted by street

Location	Trench No.	Comments	Type
Kilwinning Terrace	315	Cultivation soil	Service
Kilwinning Terrace	316	Cultivation soil	Over main
Kilwinning Terrace	317	Cultivation soil	Over main
Kilwinning Terrace	318	Cultivation soil	Over main
Kilwinning Terrace	319	Cultivation soil	Over main
Kilwinning Terrace	320	Cultivation soil	Service
Kilwinning Terrace	321	Cultivation soil	Over main
Kilwinning Terrace	322	Cultivation soil	Over main
Linkfield Road	40		Service
Linkfield Road	41		Service
Linkfield Road	95		Service
Linkfield Road	100		Service
Linkfield Road	146		Open-cut
Linkfield Road	147	Sandstone culvert, mortar bonded	Open-cut
Linkfield Road	775		Open-cut
Links Street	588		Over main
Links Street	589		Over main
Links Street	590		Over main
Links Street	591		Over main
Links Street	592		Over main
Links Street	593		Over main
Links Street	594		Over main
Links Street	595		Over main
Links Street	596		Over main
Links Street	597		Over main
Links Street	600		Over main
Links Street	601		Over main
Links Street	602		Over main
Links Street	603		Over main
Links Street	604		Over main
Links Street	641		Over main
Lochend Road North	540		Over main
Lochend Road North	541		Over main
Lochend Road North	542		Over main
Lochend Road North	543		Over main
Lochend Road North	544		Over main
Lochend Road North	545		Over main
Lochend Road North	546		Over main
Lochend Road North	547		Over main
Lochend Road North	548		Over main
Lochend Road North	549		Over main
Lochend Road North	550		Over main
Lochend Road North	551		Over main
Lochend Road North	552		Over main

1.1 Trench register, sorted by street

Location	Trench No.	Comments	Type
Lochend Road South	734		Over main
Lochend Road South	794		Open-cut
Lochend Road South	795		Open-cut
Lochend Road South	796		Open-cut
Lochend Road South	797		Open-cut
Lochend Road South	798		Service
Lochend Road South	799		Service
Lochend Road South	800		Service
Mall Avenue	406		Over main
Mall Avenue	407		Over main
Mall Avenue	408		Over main
Mall Avenue	409		Over main
Mansfield Avenue	68	Cut features, white china, factory rubble	Open-cut
Mansfield Avenue	69	Cut features, white china, factory rubble & cultivation soil	Open-cut
Mansfield Avenue	70	Cultivation soil	Open-cut
Mansfield Avenue	73		Open-cut
Mansfield Avenue	92		Service
Mansfield Avenue	93		Service
Mansfield Avenue	96		Service
Mansfield Avenue	97		Service
Mansfield Avenue	98		Service
Mansfield Avenue	99	Cultivation soil	Service
Mansfield Avenue	212		Service
Mansfield Avenue	213		Service
Mansfield Avenue	267		Over main
Mansfield Avenue	268		Over main
Mansfield Avenue	269		Service
Mansfield Avenue	270		Over main
Mansfield Avenue	272	Lime mortar bonded sandstone wall footing, possibly back of rigs	Open-cut
Mansfield Avenue	273		Service
Mansfield Avenue	274		Service
Mansfield Avenue	275		Service
Mansfield Avenue	276		Service
Mansfield Avenue	277		Service
Mansfield Avenue	279		Service
Mansfield Avenue	281		Service
Mansfield Road	246		Over main
Mansfield Road	247		Over main
Mansfield Road	248		Over main
Mansfield Road	249		Over main
Mansfield Road	250		Service

1.1 Trench register, sorted by street

Location	Trench No.	Comments	Type
Mansfield Road	251		Over main
Mansfield Road	252		Service
Mansfield Road	253		Service
Mansfield Road	254		Service
Mansfield Road	255		Service
Mansfield Road	256		Over main
Mansfield Road	257		Over main
Mansfield Road	258		Over main
Mansfield Road	259		Over main
Mansfield Road	260		Service
Mansfield Road	261		Over main
Mansfield Road	262		Over main
Market Street	670		Over main
Market Street	671		Over main
Market Street	672		Over main
Market Street	673		Over main
Market Street	680		Over main
Market Street	681		Over main
Market Street	682		Over main
Market Street	683		Over main
Market Street	684		Over main
Market Street	685		Over main
Market Street	686		Over main
Market Street	687		Over main
Market Street	688		Over main
Market Street	689		Over main
Market Street	690		Over main
Market Street	691		Over main
Market Street	692		Over main
Market Street	700		Over main
Market Street	701	Cultivation soil	Over main
Market Street	702	Cultivation soil	Over main
Market Street	703	Cultivation soil	Over main
Market Street	704		Over main
Market Street	705		Over main
Market Street	706		Over main
Market Street	707		Over main
Market Street	708		Over main
Market Street	709		Over main
Market Street	710		Over main
Market Street	711		Over main
Market Street	712		Over main
Market Street	713	Cultivation soil	Over main
Market Street	714		Over main
Market Street	715		Over main
Market Street	716		Over main

1.1 Trench register, sorted by street

Location	Trench No.	Comments	Type
Market Street	717		Over main
Market Street	718		Over main
Market Street	719		Over main
Market Street	720		Over main
Market Street	721		Over main
Market Street	722		Over main
Market Street	723		Over main
Millhill	66		Service
Millhill	67		Service
Millhill	72		Over main
Millhill	74		Over main
Millhill	75		Over main
Millhill	76		Over main
Millhill	77		Over main
Millhill	78		Over main
Millhill	79		Over main
Millhill	80		Over main
Millhill	81		Over main
Millhill	82		Over main
Millhill	83		Over main
Millhill	84		Over main
Millhill	85		Over main
Millhill	86		Over main
Millhill	87		Over main
Millhill	88		Over main
Millhill	89		Over main
Millhill	90		Over main
Millhill	91		Open-cut
Millhill	101		Over main
Millhill	102		Over main
Millhill	103		Service
Millhill	104		Over main
Millhill	106		Over main
Millhill	110		Over main
Millhill	111	Deposit containing animal bone	Over main
Millhill	112		Over main
Millhill	113	Cut feature, fill contained animal bone, oyster shell	Over main
Millhill	114		Over main
Millhill	115		Service
Millhill	121		Over main
Millhill	122		Over main
Millhill	123		Over main
Millhill	124		Over main
Millhill	125		Over main
Millhill	126		Over main

1.1 Trench register, sorted by street

Location	Trench No.	Comments	Type
Millhill	127		Over main
Millhill	129		Service
Millhill	130		Service
Millhill	131		Service
Millhill	134		Over main
High Street	136 [Ⓢ]	Deposit containing oyster shell [Ⓢ]	Service
Millhill	138		Over main
Millhill	139		Over main
Millhill	140		Service
Millhill	141		Service
Millhill	142		Over main
Millhill	143		Over main
Millhill	144		Service
Millhill	148		Open-cut
Millhill	150	Cobbled surface	Open-cut
Millhill	151		Over main
Millhill	152		Service
Millhill	153		Service
Millhill	154		Service
Millhill	155		Service
Millhill	156		Service
Millhill	157		Service
Millhill	159		Service
Millhill	160		Service
Millhill	161		Service
Millhill	162		Over main
Millhill	163		Service
Millhill	164		Over main
Millhill	165		Service
Millhill	166		Over main
Millhill	167		Service
Millhill	168		Service
Millhill	170		Service
Millhill	185		Open-cut
Millhill	218		Service
Millhill	219		Service
Millhill	223		Over main
Millhill	224		Over main
Millhill	225		Over main
Millhill	229		Over main
Millhill	230		Over main
Millhill	231		Over main
Millhill	232		Over main
Millhill	233		Over main
Millhill	234		Over main
Millhill	235		Over main
Millhill	236		Over main

1.1 Trench register, sorted by street

Location	Trench No.	Comments	Type
Millhill	239		Over main
Millhill	240		Over main
Millhill	241	Cobbled surface	Over main
Millhill	242		Service
Millhill	243		Service
Millhill	244		Service
Millhill	245		Service
New Street	435		Service
New Street	436		Over main
New Street	437		Over main
New Street	438		Over main
New Street	439		Over main
New Street	440		Over main
New Street	441		Service
New Street	442		Over main
New Street	443		Service
New Street	444		Over main
New Street	445		Over main
New Street	446		Service
New Street	447		Over main
New Street	448		Service
New Street	449		Over main
New Street	450		Over main
New Street	452		Over main
New Street	453		Over main
New Street	454		Over main
New Street	455		Over main
New Street	456		Over main
New Street	457		Over main
New Street	482		Over main
New Street	483		Over main
New Street	484		Over main
New Street	530		Over main
New Street	531		Over main
New Street	532		Over main
New Street	533		Over main
New Street	534		Over main
New Street	535		Over main
New Street	536		Over main
New Street	537		Over main
New Street	538		Over main
New Street	553		Over main
New Street	554		Over main
New Street	556		Service
New Street	557		Service
New Street	558		Service

1.1 Trench register, sorted by street

Location	Trench No.	Comments	Type
New Street	559		Service
New Street	560		Service
New Street	561		Service
New Street	562		Service
New Street	563		Over main
New Street	606		Over main
New Street	608		Over main
New Street	609		Over main
New Street	610		Over main
New Street	611		Over main
New Street	614		Over main
New Street	615		Over main
New Street	616		Over main
New Street	617		Over main
New Street	618		Over main
New Street	619		Over main
New Street	620		Over main
New Street	621		Over main
New Street	622		Over main
New Street	623		Over main
New Street	624		Over main
New Street	668		Service
New Street	669		Service
New Street	674		Service
New Street	675		Service
New Street	676		Service
New Street	677		Service
New Street	770		Open-cut
New Street	893		Service
Newbigging	186		Open-cut
Newbigging	515		Open-cut
Newbigging	732		Open-cut
Newhailes Road	312		Open-cut
North High Street	187		Service
North High Street	323		Open-cut
North High Street	399	Sandstone culvert, mortar bonded	Open-cut
North High Street	405		Open-cut
North High Street	415		Open-cut
North High Street	427		Open-cut
North High Street	428		Open-cut
North High Street	430		Open-cut
North High Street	431		Open-cut
North High Street	434		Open-cut
North High Street	451		Open-cut

1.1 Trench register, sorted by street

Location	Trench No.	Comments	Type
North High Street	485	Unbonded sandstone culvert, no base	Service
North High Street	514		Open-cut
North High Street	520	Cut feature, fill contained oyster shells	Open-cut
North High Street	539	Deposit rich in shell fragments	Open-cut
North High Street	583		Open-cut
North High Street	586	C19th culvert, unbonded; deposit containing shell fragments	Open-cut
North High Street	587		Open-cut
North High Street	599	Cut feature, probably ditch, fill contained bone and shell	Open-cut
North High Street	605	Cut features, probably ditches	Open-cut
North High Street	631		Over main
North High Street	632		Over main
North High Street	633		Over main
North High Street	634		Over main
North High Street	635		Over main
North High Street	636		Over main
North High Street	638		Over main
North High Street	639		Over main
North High Street	640		Over main
North High Street	642		Over main
North High Street	643		Over main
North High Street	644		Over main
North High Street	645		Over main
North High Street	646		Over main
North High Street	647		Over main
North High Street	648		Over main
North High Street	649		Over main
North High Street	650		Over main
North High Street	651		Over main
North High Street	652		Over main
North High Street	653		Over main
North High Street	654		Over main
North High Street	655		Over main
North High Street	656		Over main
North High Street	657		Over main
North High Street	658		Over main
North High Street	660		Over main
North High Street	661		Over main
North High Street	662	Cultivation soil	Over main
North High Street	679		Open-cut
North High Street	694	Deposit containing marine shell and charcoal	Open-cut
North High Street	699	Deposit containing marine shell and coal; possible cut features; midden deposit containing shell and pottery	Open-cut

1.1 Trench register, sorted by street

Location	Trench No.	Comments	Type
North High Street	733	Deposit containing shell and pottery; cut feature, probably ditch	Open-cut
North High Street	748		Over main
North High Street	749		Service
North High Street	750		Service
North High Street	751		Service
North High Street	752		Service
North High Street	753		Service
North High Street	754		Service
North High Street	755		Service
North High Street	756		Service
North High Street	760		Service
North High Street	761		Service
North High Street	762	Midden deposit	Service
North High Street	763	Midden deposit	Service
North High Street	764		Service
North High Street	765		Service
North High Street	766		Service
North High Street	767		Service
North High Street	773		Service
North High Street	774		Service
North High Street	776		Service
North High Street	777		Service
North High Street	778		Service
North High Street	779		Service
North High Street	785		Service
North High Street	848	Cultivation soil; mortar bonded sandstone wall footing	Open-cut
North High Street	853		Open-cut
North High Street	866		Open-cut
North High Street	869		Service
North High Street	877		Service
North High Street	878		Service
North High Street	879		Service
North High Street	880		Service
North High Street	881		Service
North High Street	882		Service
North High Street	883		Service
North High Street	884		Service
North High Street	885		Service
North High Street	886		Service
North High Street	887		Service
North High Street	888		Service
North High Street	889		Service
North High Street	890		Service
North High Street	891		Service
North High Street	892		Service

1.1 Trench register, sorted by street

Location	Trench No.	Comments	Type
North High Street	894		Open-cut
North High Street	895		Open-cut
North High Street	896		Service
North High Street	897		Service
North High Street	898		Service
Olive Bank Road	418		Open-cut
Pinkie Road	174	Sandstone culvert	Over main
Pinkie Road	175		Over main
Pinkie Road	176		Over main
Pinkie Road	177		Over main
Pinkie Road	178		Over main
Pinkie Road	179		Over main
Pinkie Road	180		Over main
Pinkie Road	181		Over main
Pinkie Road	182		Over main
Pinkie Road	183		Over main
Pinkie Road	850		Open-cut
Pinkie Terrace	188		Over main
Shorthope Street	191		Over main
Shorthope Street	192		Service
Shorthope Street	193		Service
Shorthope Street	194		Service
Shorthope Street	207		Over main
Shorthope Street	208		Over main
Shorthope Street	209		Over main
Shorthope Street	210		Over main
Shorthope Street	211		Over main
Shorthope Street	215		Open-cut
South Street	724		Over main
South Street	725		Over main
South Street	726		Over main
South Street	727		Over main
South Street	728		Over main
South Street	729		Over main
South Street	730		Over main
South Street	731		Over main
Station Road	412		Over main
Station Road	416		Over main
Station Road	417		Over main
Watt's Close	564		Over main

1.1 Trench register, sorted by street

Location	Trench No.	Comments	Type
Watt's Close	565		Over main
Watt's Close	566		Over main
Watt's Close	567		Over main
Watt's Close	568		Over main
Watt's Close	569		Over main
West Holmes Gardens	809		Open-cut

1.2 Trench register, sorted by trench number

Trench No.	Location	Comments	Type
1	High Street		Open-cut
2	High Street	Midden, pottery	Open-cut
3	High Street	Pit	Open-cut
4	High Street		Open-cut
5	High Street		Open-cut
6	High Street	Midden, bone	Service
7	High Street		Service
8	High Street		Open-cut
9	High Street		Service
10	High Street	Cut feature, oyster shell	Open-cut
11	High Street		Service
12	Eskside East		Over main
13	Eskside East		Over main
14	Eskside East		Over main
15	Eskside East		Over main
16	Eskside East		Over main
17	Eskside East		Over main
18	Goose Green Road		Over main
19	Goose Green Road		Over main
20	High Street		Open-cut
21	High Street		Service
22	James Street		Over main
23	James Street		Over main
24	James Street		Over main
25	High Street		Service
26	Eskside East		Over main
27	Eskside East		Over main
28	High Street		Open-cut
29	High Street		Service
30	High Street	Cut feature, charcoal, shell fragments	Open-cut
31	James Street		Over main
32	James Street		Over main
33	James Street		Over main
34	Eskside East		Over main
35	Eskside East		Over main
36	High Street	Deposit containing shell, coal fragments	Open-cut
37	James Street		Over main
38	James Street		Over main
39	High Street	Shell midden, white gritty pottery	Open-cut
40	Linkfield Road		Service
41	Linkfield Road		Service
42	James Street		Over main
43	James Street		Over main
44	Balcarres Road		Service
45	Balcarres Road		Service
46	Balcarres Road		Service
47	Balcarres Road		Service

1.2 Trench register, sorted by trench number

Trench No.	Location	Comments	Type
48	Balcarres Road		Service
49	High Street		Service
50	High Street		Service
51	High Street		Service
52	Balcarres Road		Over main
53	Balcarres Road		Over main
54	Balcarres Road		Service
55	High Street		Service
56	High Street		Open-cut
57	High Street		Service
58	High Street		Service
59	High Street		Service
60	High Street		Service
61	High Street		Service
62	High Street		Service
63	High Street		Service
64	High Street		Service
65	High Street		Service
66	Millhill		Service
67	Millhill		Service
68	Mansfield Avenue	Cut features, white china, factory rubble	Open-cut
69	Mansfield Avenue	Cut features, white china, factory rubble, cultivation soil	Open-cut
70	Mansfield Avenue	Cultivation soil	Open-cut
71	High Street		Service
72	Millhill		Over main
73	Mansfield Avenue		Open-cut
74	Millhill		Over main
75	Millhill		Over main
76	Millhill		Over main
77	Millhill		Over main
78	Millhill		Over main
79	Millhill		Over main
80	Millhill		Over main
81	Millhill		Over main
82	Millhill		Over main
83	Millhill		Over main
84	Millhill		Over main
85	Millhill		Over main
86	Millhill		Over main
87	Millhill		Over main
88	Millhill		Over main
89	Millhill		Over main
90	Millhill		Over main
91	Millhill		Open-cut
92	Mansfield Avenue		Service
93	Mansfield Avenue		Service

1.2 Trench register, sorted by trench number

Trench No.	Location	Comments	Type
94	High Street		Service
95	Linkfield Road		Service
96	Mansfield Avenue		Service
97	Mansfield Avenue		Service
98	Mansfield Avenue		Service
99	Mansfield Avenue	Cultivation soil	Service
100	Linkfield Road		Service
101	Millhill		Over main
102	Millhill		Over main
103	Millhill		Service
104	Millhill		Over main
105	High Street	Deposit containing crushed shell, charcoal	Service
106	Millhill		Over main
107	High Street		Service
108	High Street		Service
109	High Street	Deposit containing crushed shell, charcoal, pottery	Service
110	Millhill		Over main
111	Millhill	Deposit containing animal bone	Over main
112	Millhill		Over main
113	Millhill	Cut feature, fill contained animal bone, oyster shell	Over main
114	Millhill		Over main
115	Millhill		Service
116	High Street		Service
117	High Street		Service
118	High Street		Service
119	High Street		Open-cut
120	High Street		Service
121	Millhill		Over main
122	Millhill		Over main
123	Millhill		Over main
124	Millhill		Over main
125	Millhill		Over main
126	Millhill		Over main
127	Millhill		Over main
128	High Street	Possible wall footing, possible cut	Service
129	Millhill		Service
130	Millhill		Service
131	Millhill		Service
132	High Street		Service
133	High Street		Service
134	Millhill		Over main
135	High Street		Service
136*	High Street	Deposit containing oyster shell®	Service
137	High Street		Service
138	Millhill		Over main

1.2 Trench register, sorted by trench number

Trench No.	Location	Comments	Type
139	Millhill		Over main
140	Millhill		Service
141	Millhill		Service
142	Millhill		Over main
143	Millhill		Over main
144	Millhill		Service
145	High Street		Service
146	Linkfield Road		Open-cut
147	Linkfield Road	Sandstone culvert, mortar bonded	Open-cut
148	Millhill		Open-cut
149	High Street		Service
150	Millhill	Cobbled surface	Open-cut
151	Millhill		Over main
152	Millhill		Service
153	Millhill		Service
154	Millhill		Service
155	Millhill		Service
156	Millhill		Service
157	Millhill		Service
158	Inveresk Road	Cultivation soil	Open-cut
159	Millhill		Service
160	Millhill		Service
161	Millhill		Service
162	Millhill		Over main
163	Millhill		Service
164	Millhill		Over main
165	Millhill		Service
166	Millhill		Over main
167	Millhill		Service
168	Millhill		Service
169	Inveresk Road	Cultivation soil with marine shell and coal; sandstone and shell mortar wall footing	Open-cut
170	Millhill		Service
171	Kerrs Wynd		Service
172	Kerrs Wynd		Service
173	Kerrs Wynd		Service
174	Pinkie Road	Sandstone culvert	Over main
175	Pinkie Road		Over main
176	Pinkie Road		Over main
177	Pinkie Road		Over main
178	Pinkie Road		Over main
179	Pinkie Road		Over main
180	Pinkie Road		Over main
181	Pinkie Road		Over main
182	Pinkie Road		Over main
183	Pinkie Road		Over main
184	Edenhall Road		Over main

1.2 Trench register, sorted by trench number

Trench No.	Location	Comments	Type
185	Millhill		Open-cut
186	Newbigging		Open-cut
187	North High Street		Service
188	Pinkie Terrace		Over main
189	Inveresk Brae		Trial hole
191	Shorthope Street		Over main
192	Shorthope Street		Service
193	Shorthope Street		Service
194	Shorthope Street		Service
195	Inveresk Brae		Trial hole
196	Inveresk Brae		Trial hole
197	Inveresk Road		Service
198	Inveresk Road		Service
199	Inveresk Brae	Charcoal rich deposit, contained marine shell, brick and bone	Open-cut
200	Inveresk Brae	Complex ditch sequence, possible Roman date; sandstone culvert	Open-cut
201	Inveresk Road		Service
202	Inveresk Road		Service
203	Inveresk Road		Service
204	Inveresk Road		Service
205	Inveresk Road		Service
206	Inveresk Road		Service
207	Shorthope Street		Over main
208	Shorthope Street		Over main
209	Shorthope Street		Over main
210	Shorthope Street		Over main
211	Shorthope Street		Over main
212	Mansfield Avenue		Service
213	Mansfield Avenue		Service
214	Goose Green Road		Over main
215	Shorthope Street		Open-cut
216	Inveresk Brae		Open-cut
217	Balcarres Road		Over main
218	Millhill		Service
219	Millhill		Service
220	Inveresk Village Road	C19th demolition rubble	Open-cut
221	Balcarres Place		Over main
222	Balcarres Place		Over main
223	Millhill		Over main
224	Millhill		Over main
225	Millhill		Over main
226	Inveresk Road		Service
227	Inveresk Road	Linear feature filled with sandstone rubble	Service
228	Inveresk Road	Linear feature filled with sandstone rubble	Service
229	Millhill		Over main
230	Millhill		Over main

1.2 Trench register, sorted by trench number

Trench No.	Location	Comments	Type
231	Millhill		Over main
232	Millhill		Over main
233	Millhill		Over main
234	Millhill		Over main
235	Millhill		Over main
236	Millhill		Over main
237	Balcarres Place		Service
238	Balcarres Place		Service
239	Millhill		Over main
240	Millhill		Over main
241	Millhill	Cobbled surface	Over main
242	Millhill		Service
243	Millhill		Service
244	Millhill		Service
245	Millhill		Service
246	Mansfield Road		Over main
247	Mansfield Road		Over main
248	Mansfield Road		Over main
249	Mansfield Road		Over main
250	Mansfield Road		Service
251	Mansfield Road		Over main
252	Mansfield Road		Service
253	Mansfield Road		Service
254	Mansfield Road		Service
255	Mansfield Road		Service
256	Mansfield Road		Over main
257	Mansfield Road		Over main
258	Mansfield Road		Over main
259	Mansfield Road		Over main
260	Mansfield Road		Service
261	Mansfield Road		Over main
262	Mansfield Road		Over main
263	Kerrs Wynd	Deposits rich in charcoal	Open-cut
264	Kerrs Wynd	Mill lade	Open-cut
265	Kerrs Wynd		Open-cut
266	Kerrs Wynd		Open-cut
267	Mansfield Avenue		Over main
268	Mansfield Avenue		Over main
269	Mansfield Avenue		Service
270	Mansfield Avenue		Over main
271	Inveresk Brae	Lime mortar bonded rubble wall; very deep made ground	Open-cut
272	Mansfield Avenue	Lime mortar bonded sandstone wall footing, possibly back of rigs	Open-cut
273	Mansfield Avenue		Service
274	Mansfield Avenue		Service
275	Mansfield Avenue		Service

1.2 Trench register, sorted by trench number

Trench No.	Location	Comments	Type
276	Mansfield Avenue		Service
277	Mansfield Avenue		Service
278	Inveresk Brae	Cut feature, fill contained shell fragments, other similar deposits	Open-cut
279	Mansfield Avenue		Service
280	High Street		Open-cut
281	Mansfield Avenue		Service
282	Kilwinning Place		Trial hole
283	Kilwinning Car Park		Open-cut
284	Kerrs Wynd		Service
285	Kerrs Wynd	Deposit containing charcoal & shell fragments	Service
286	Kilwinning Terrace	Cultivation soil	Service
287	Kilwinning Terrace	Cultivation soil	Service
288	Kilwinning Terrace	Cultivation soil	Service
289	Kilwinning Terrace	Cultivation soil	Service
290	Kilwinning Terrace	Cultivation soil	Service
291	Kerrs Wynd		Service
292	Kerrs Wynd		Service
293	Kilwinning Terrace	Cultivation soil	Over main
294	Kilwinning Terrace	Cultivation soil	Service
295	Kilwinning Terrace	Cultivation soil	Over main
296	Kilwinning Terrace	Cultivation soil	Service
297	Kilwinning Terrace	Cultivation soil	Over main
298	Kilwinning Terrace	Cultivation soil	Service
299	Kilwinning Terrace	Cultivation soil	Service
300	Kilwinning Terrace	Cultivation soil	Over main
301	Kilwinning Terrace	Cultivation soil	Service
302	Kilwinning Terrace	Cultivation soil	Over main
303	Kilwinning Terrace	Cultivation soil	Service
304	Kilwinning Terrace	Cultivation soil	Service
305	Kilwinning Terrace	Cultivation soil	Service
306	Kilwinning Terrace	Cultivation soil	Service
307	Kerrs Wynd		Service
308	Kilwinning Car Park		Open-cut
309	Kilwinning Terrace	Cultivation soil	Over main
310	Kilwinning Terrace	Cultivation soil	Over main
311	Kilwinning Car Park	Mortar bonded sandstone blocks, deposit containing oyster shells, cut feature	Open-cut
312	Newhailes Road		Open-cut
313	Kilwinning Terrace	Cultivation soil	Over main
314	Kilwinning Terrace	Cultivation soil	Service
315	Kilwinning Terrace	Cultivation soil	Service
316	Kilwinning Terrace	Cultivation soil	Over main
317	Kilwinning Terrace	Cultivation soil	Over main
318	Kilwinning Terrace	Cultivation soil	Over main
319	Kilwinning Terrace	Cultivation soil	Over main

1.2 Trench register, sorted by trench number

Trench No.	Location	Comments	Type
320	Kilwinning Terrace	Cultivation soil	Service
321	Kilwinning Terrace	Cultivation soil	Over main
322	Kilwinning Terrace	Cultivation soil	Over main
323	North High Street		Open-cut
324	Kilwinning Place	Cultivation soil	Open-cut
325	Kilwinning Place	Cultivation soil	Service
326	Kilwinning Place	Cultivation soil	Over main
327	Kilwinning Place	Cultivation soil	Over main
328	Kilwinning Place	Cultivation soil	Over main
379	Kilwinning Place	Cultivation soil	Over main
380	Kilwinning Place	Cultivation soil	Over main
381	Kilwinning Place	Cultivation soil	Over main
382	Kilwinning Place	Cultivation soil	Service
383	Kilwinning Street		Over main
384	Inveresk Brae	Cut feature	Open-cut
385	Kilwinning Street		Over main
386	Kilwinning Street		Service
387	Kilwinning Street		Over main
388	Kilwinning Street		Service
389	Kilwinning Street		Over main
390	Kilwinning Street		Service
391	Kilwinning Street		Service
392	Kilwinning Street		Over main
393	Kilwinning Street		Service
394	Kilwinning Street		Service
395	Kilwinning Street		Over main
396	Kilwinning Street		Service
397	Kilwinning Street		Over main
398	Kilwinning Street	Cultivation soil	Over main
399	North High Street	Sandstone culvert, mortar bonded	Open-cut
400	Inveresk Brae		Open-cut
401	Kilwinning Street		Service
402	Inveresk Brae		Open-cut
403	Inveresk Brae		Open-cut
404	Inveresk Brae		Open-cut
405	North High Street		Open-cut
406	Mall Avenue		Over main
407	Mall Avenue		Over main
408	Mall Avenue		Over main
409	Mall Avenue		Over main
410	Inveresk Brae		Open-cut
411	Inveresk Brae		Service
412	Station Road		Over main
413	Inveravon Terrace		Trial hole
414	Inveravon Terrace	C19th deposits	Over main
415	North High Street		Open-cut
416	Station Road		Over main

1.2 Trench register, sorted by trench number

Trench No.	Location	Comments	Type
417	Station Road		Over main
418	Olive Bank Road		Open-cut
419	Eskmills Estate		Over main
420	Eskmills Estate		Over main
421	Eskmills Estate		Over main
422	Eskmills Estate		Over main
424	Eskmills Estate		Over main
425	Inveresk Brae		Open-cut
426	Eskmills Estate		Over main
427	North High Street		Open-cut
428	North High Street		Open-cut
429	Eskmills Estate		Over main
430	North High Street		Open-cut
431	North High Street		Open-cut
432	Inveresk Brae		Open-cut
433	Inveresk Brae		Open-cut
434	North High Street		Open-cut
435	New Street		Service
436	New Street		Over main
437	New Street		Over main
438	New Street		Over main
439	New Street		Over main
440	New Street		Over main
441	New Street		Service
442	New Street		Over main
443	New Street		Service
444	New Street		Over main
445	New Street		Over main
446	New Street		Service
447	New Street		Over main
448	New Street		Service
449	New Street		Over main
450	New Street		Over main
451	North High Street		Open-cut
452	New Street		Over main
453	New Street		Over main
454	New Street		Over main
455	New Street		Over main
456	New Street		Over main
457	New Street		Over main
458	Balcarres Road		Open-cut
459	Double Dykes		Over main
460	Double Dykes		Over main
461	Double Dykes		Over main
462	Double Dykes		Over main
463	Double Dykes		Over main
464	Double Dykes		Over main

1.2 Trench register, sorted by trench number

Trench No.	Location	Comments	Type
470	Beach Lane		Over main
471	Beach Lane		Over main
472	Beach Lane		Over main
473	Beach Lane		Service
474	Beach Lane		Over main
475	Beach Lane		Over main
476	Beach Lane		Over main
477	Beach Lane		Service
478	Beach Lane		Over main
479	Beach Lane		Over main
480	Beach Lane		Over main
481	Beach Lane	Sandstone wall footing, mortar bonded	Over main
482	New Street		Over main
483	New Street		Over main
484	New Street		Over main
485	North High Street	Unbonded sandstone culvert, no base	Service
486	Fishers Wynd		Over main
487	Fishers Wynd		Over main
488	Fishers Wynd		Over main
489	Fishers Wynd		Service
490	Fishers Wynd		Over main
491	Fishers Wynd		Over main
492	Fishers Wynd		Service
493	Inveresk Village Road		Service
494	Inveresk Village Road		Service
495	Inveresk Village Road		Service
496	Inveresk Village Road		Over main
497	Fishers Wynd		Over main
498	Fishers Wynd		Over main
499	Fishers Wynd		Over main
500	Fishers Wynd		Over main
501	Fishers Wynd		Over main
502	Fishers Wynd		Over main
503	Inveresk Village Road		Over main
504	Inveresk Village Road		Over main
505	Inveresk Village Road		Over main
506	Inveresk Village Road		Over main
507	Inveresk Village Road		Over main
508	Fishers Wynd		Over main
509	Fishers Wynd		Over main
510	Fishers Wynd		Service
511	Fishers Wynd		Service
512	Fishers Wynd		Service
513	Fishers Wynd		Service
514	North High Street		Open-cut
515	Newbigging		Open-cut
516	Inveresk Village Road		Over main

1.2 Trench register, sorted by trench number

Trench No.	Location	Comments	Type
517	Inveresk Village Road		Over main
518	Inveresk Village Road		Over main
519	Inveresk Village Road		Over main
520	North High Street	Cut feature, fill contained oyster shells	Open-cut
521	Inveresk Brae		Over main
522	Fire Station		Over main
523	Fire Station		Over main
524	Fire Station		Over main
525	Fire Station		Over main
526	Fire Station		Over main
527	Carberry Road	Ploughsoil	Open-cut
528	Inveresk Village Road		Over main
529	Inveresk Village Road		Over main
530	New Street		Over main
531	New Street		Over main
532	New Street		Over main
533	New Street		Over main
534	New Street		Over main
535	New Street		Over main
536	New Street		Over main
537	New Street		Over main
538	New Street		Over main
539	North High Street	Deposit rich in shell fragments	Open-cut
540	Lochend Road North		Over main
541	Lochend Road North		Over main
542	Lochend Road North		Over main
543	Lochend Road North		Over main
544	Lochend Road North		Over main
545	Lochend Road North		Over main
546	Lochend Road North		Over main
547	Lochend Road North		Over main
548	Lochend Road North		Over main
549	Lochend Road North		Over main
550	Lochend Road North		Over main
551	Lochend Road North		Over main
552	Lochend Road North		Over main
553	New Street		Over main
554	New Street		Over main
555	Carberry Road		Open-cut
556	New Street		Service
557	New Street		Service
558	New Street		Service
559	New Street		Service
560	New Street		Service
561	New Street		Service
562	New Street		Service
563	New Street		Over main

1.2 Trench register, sorted by trench number

Trench No.	Location	Comments	Type
564	Watt's Close		Over main
565	Watt's Close		Over main
566	Watt's Close		Over main
567	Watt's Close		Over main
568	Watt's Close		Over main
569	Watt's Close		Over main
570	Downie Place		Over main
571	Downie Place		Over main
572	Downie Place		Over main
573	Downie Place		Over main
574	Downie Place		Over main
575	Downie Place		Over main
576	Downie Place		Over main
577	Downie Place		Over main
578	Downie Place		Over main
579	Downie Place		Over main
580	Downie Place		Over main
581	Downie Place		Over main
582	Downie Place	Cultivation soil with occasional bone fragments	Over main
583	North High Street		Open-cut
584	Downie Place	Cultivation soil with occasional bone fragments	Over main
585	Downie Place		Open-cut
586	North High Street	C19th culvert, unbonded; deposit containing shell fragments	Open-cut
587	North High Street		Open-cut
588	Links Street		Over main
589	Links Street		Over main
590	Links Street		Over main
591	Links Street		Over main
592	Links Street		Over main
593	Links Street		Over main
594	Links Street		Over main
595	Links Street		Over main
596	Links Street		Over main
597	Links Street		Over main
598	Carberry Road		Open-cut
599	North High Street	Cut feature, probably ditch, fill contained bone and shell	Open-cut
600	Links Street		Over main
601	Links Street		Over main
602	Links Street		Over main
603	Links Street		Over main
604	Links Street		Over main
605	North High Street	Cut features, probably ditches	Open-cut
606	New Street		Over main

1.2 Trench register, sorted by trench number

Trench No.	Location	Comments	Type
607	Carberry Road		Open-cut
608	New Street		Over main
609	New Street		Over main
610	New Street		Over main
611	New Street		Over main
612	Bridge Street	Deposit containing marine shell	Open-cut
613	Carberry Road	Unbonded sandstone culvert	Open-cut
614	New Street		Over main
615	New Street		Over main
616	New Street		Over main
617	New Street		Over main
618	New Street		Over main
619	New Street		Over main
620	New Street		Over main
621	New Street		Over main
622	New Street		Over main
623	New Street		Over main
624	New Street		Over main
625	Bridge Street		Open-cut
626	Carberry Road		Open-cut
627	Eskside West		Over main
628	Eskside West		Over main
629	Eskside West		Over main
630	Eskside West		Over main
631	North High Street		Over main
632	North High Street		Over main
633	North High Street		Over main
634	North High Street		Over main
635	North High Street		Over main
636	North High Street		Over main
637	Bridge Street		Open-cut
638	North High Street		Over main
639	North High Street		Over main
640	North High Street		Over main
641	Links Street		Over main
642	North High Street		Over main
643	North High Street		Over main
644	North High Street		Over main
645	North High Street		Over main
646	North High Street		Over main
647	North High Street		Over main
648	North High Street		Over main
649	North High Street		Over main
650	North High Street		Over main
651	North High Street		Over main
652	North High Street		Over main
653	North High Street		Over main

1.2 Trench register, sorted by trench number

Trench No.	Location	Comments	Type
654	North High Street		Over main
655	North High Street		Over main
656	North High Street		Over main
657	North High Street		Over main
658	North High Street		Over main
659	Bridge Street	Cultivation soil or midden, contained shell, coal, pottery	Open-cut
660	North High Street		Over main
661	North High Street		Over main
662	North High Street	Cultivation soil	Over main
663	Eskside West		Over main
664	Bridge Street	Midden deposit, contained marine shell	Open-cut
665	Bridge Street	Midden deposit, contained marine shell	Open-cut
666	Bridge Street	Deposit containing marine shell	Open-cut
667	Eskside West		Over main
668	New Street		Service
669	New Street		Service
670	Market Street		Over main
671	Market Street		Over main
672	Market Street		Over main
673	Market Street		Over main
674	New Street		Service
675	New Street		Service
676	New Street		Service
677	New Street		Service
678	Carberry Road		Open-cut
679	North High Street		Open-cut
680	Market Street		Over main
681	Market Street		Over main
682	Market Street		Over main
683	Market Street		Over main
684	Market Street		Over main
685	Market Street		Over main
686	Market Street		Over main
687	Market Street		Over main
688	Market Street		Over main
689	Market Street		Over main
690	Market Street		Over main
691	Market Street		Over main
692	Market Street		Over main
693	Carberry Road		Open-cut
694	North High Street	Deposit containing marine shell and charcoal	Open-cut
695	Eskside West		Over main
696	Eskside West		Over main
697	Eskside West		Over main
698	Eskside West		Over main

1.2 Trench register, sorted by trench number

Trench No.	Location	Comments	Type
699	North High Street	Deposit containing marine shell and coal; possible cut features; midden deposit containing shell and pottery	Open-cut
700	Market Street		Over main
701	Market Street	Cultivation soil	Over main
702	Market Street	Cultivation soil	Over main
703	Market Street	Cultivation soil	Over main
704	Market Street		Over main
705	Market Street		Over main
706	Market Street		Over main
707	Market Street		Over main
708	Market Street		Over main
709	Market Street		Over main
710	Market Street		Over main
711	Market Street		Over main
712	Market Street		Over main
713	Market Street	Cultivation soil	Over main
714	Market Street		Over main
715	Market Street		Over main
716	Market Street		Over main
717	Market Street		Over main
718	Market Street		Over main
719	Market Street		Over main
720	Market Street		Over main
721	Market Street		Over main
722	Market Street		Over main
723	Market Street		Over main
724	South Street		Over main
725	South Street		Over main
726	South Street		Over main
727	South Street		Over main
728	South Street		Over main
729	South Street		Over main
730	South Street		Over main
731	South Street		Over main
732	Newbigging		Open-cut
733	North High Street	Deposit containing shell and pottery; cut feature, probable ditch	Open-cut
734	Lochend Road South		Over main
735	Eskside West		Over main
736	Eskside West		Over main
737	Eskside West		Over main
738	Eskside West		Over main
739	Eskside West		Over main
740	Carberry Road		Open-cut
741	Harbour Road		Over main
742	Harbour Road		Over main

1.2 Trench register, sorted by trench number

Trench No.	Location	Comments	Type
743	Harbour Road		Over main
744	Harbour Road		Over main
745	Harbour Road		Over main
746	Harbour Road		Over main
747	Harbour Road		Over main
748	North High Street		Over main
749	North High Street		Service
750	North High Street		Service
751	North High Street		Service
752	North High Street		Service
753	North High Street		Service
754	North High Street		Service
755	North High Street		Service
756	North High Street		Service
757	Eskside West	Midden deposits	Open-cut
758	Eskside West		Open-cut
759	Eskside West		Open-cut
760	North High Street		Service
761	North High Street		Service
762	North High Street	Midden deposit	Service
763	North High Street	Midden deposit	Service
764	North High Street		Service
765	North High Street		Service
766	North High Street		Service
767	North High Street		Service
768	Carberry Road		Open-cut
769	Carberry Road		Open-cut
770	New Street		Open-cut
771	Eskside West		Open-cut
772	Carberry Road		Open-cut
773	North High Street		Service
774	North High Street		Service
775	Linkfield Road		Open-cut
776	North High Street		Service
777	North High Street		Service
778	North High Street		Service
779	North High Street		Service
780	Bridge Street		Service
781	Bridge Street		Service
782	Bridge Street		Over main
783	Bridge Street		Service
784	Bridge Street		Service
785	North High Street		Service
786	Eskside West		Service
787	Eskside West		Service
788	Carberry Road		Over main
789	Carberry Road		Over main

1.2 Trench register, sorted by trench number

Trench No.	Location	Comments	Type
790	Inveresk Village Road		Open-cut
791	Hercus Loan		Open-cut
792	Hercus Loan		Open-cut
793	Hercus Loan		Open-cut
794	Lochend Road South		Open-cut
795	Lochend Road South		Open-cut
796	Lochend Road South		Open-cut
797	Lochend Road South		Open-cut
798	Lochend Road South		Service
799	Lochend Road South		Service
800	Lochend Road South		Service
801	Eskside West		Over main
802	Eskside West		Over main
803	Eskside West		Over main
804	Eskside West		Over main
805	Eskside West		Over main
806	Inveresk Brae		Service
807	Inveresk Brae		Service
808	Inveresk Brae		Service
809	West Holmes Gardens		Open-cut
810	Inveresk Brae		Service
811	Inveresk Road		Open-cut
812	Eskside West		Over main
813	Eskside West		Over main
814	Eskside West		Over main
815	Eskside West		Over main
816	Eskside West		Over main
817	Eskside West		Over main
818	Eskside West		Over main
819	Eskside West		Over main
820	Bridge Street	Mortar bonded sandstone and brick culvert	Open-cut
821	Bridge Street		Open-cut
822	Bridge Street		Open-cut
823	Eskside West		Over main
824	Carberry Road		Service
825	Carberry Road		Service
826	Carberry Road		Service
827	Carberry Road		Service
828	Carberry Road		Service
829	Carberry Road		Service
830	Carberry Road		Service
831	Carberry Road		Service
832	(record not used)		
833	Inveresk Village Road		Over main
834	Inveresk Village Road		Over main
835	Inveresk Village Road		Over main
836	Inveresk Village Road		Over main

1.2 Trench register, sorted by trench number

Trench No.	Location	Comments	Type
837	Inveresk Village Road		Over main
838	Inveresk Village Road		Over main
839	Inveresk Village Road		Over main
840	Inveresk Village Road		Over main
841	Bridge Street		Open-cut
842	Bridge Street	Deposit containing oyster shell	Open-cut
843	Bridge Street		Service
844	Bridge Street		Service
845	Bridge Street		Service
846	Bridge Street		Service
847	Bridge Street	Cultivation soil	Open-cut
848	North High Street	Cultivation soil; mortar bonded sandstone wall footing	Open-cut
849	Fishers Wynd		Open-cut
850	Pinkie Road		Open-cut
851	Inveresk Brae		Service
852	Inveresk Brae		Service
853	North High Street		Open-cut
854	Inveresk Brae		Service
855	Inveresk Brae		Service
866	North High Street		Open-cut
867	Inveresk Brae		Open-cut
868	Inveresk Brae		Open-cut
869	North High Street		Service
870	Bridge Street		Service
871	Bridge Street		Service
872	Bridge Street		Service
873	Bridge Street		Service
874	Bridge Street		Service
875	Bridge Street		Service
876	Bridge Street		Service
877	North High Street		Service
878	North High Street		Service
879	North High Street		Service
880	North High Street		Service
881	North High Street		Service
882	North High Street		Service
883	North High Street		Service
884	North High Street		Service
885	North High Street		Service
886	North High Street		Service
887	North High Street		Service
888	North High Street		Service
889	North High Street		Service
890	North High Street		Service
891	North High Street		Service
892	North High Street		Service

1.3 Context Register

Trench/ Context No.	Description	Depth of deposit (m)
001/010	Road surface and concrete	0-0.29 m
001/011	Mixed sand and crushed sandstone	0.29-0.52 m
001/012	Light brown sand	0.52-0.76 m
001/013	Sand and gravel	0.76-0.98 m
001/014	Sandy gravel with charcoal flecks	0.98-1.13 m
002/001	Road surface and concrete	0-0.43 m
002/002	Fine sand, contained clay pipe stem	0.47-0.56 m
002/003	Light brown loose sand	0.56-0.64 m
002/004	Mid brown sand and gravel	0.64-0.75 m
002/005	Sandy gravel	0.75-0.86 m
002/006	Light brown sand containing post-medieval pottery	0.86-0.90 m
002/007	Rounded gravel	0.90-0.92 m
002/008	Oily layer beneath [002/001]	0.43-0.47 m
002/009	Dark organic sandy silt containing shell fragments and pottery	0.92-1.00 m
003/016	Compact yellow-brown sand	0.60-1.00 m
003/017	Dark grey silty sand containing animal bone, fills [003/018]	1.00-1.60 m
003/018	Cut of pit, partly truncated by modern activity, W = 1.00 m	1.00-1.60 m
003/019	Sand and gravel	0.65-1.60 m
005/001	Tarmac	0-0.10 m
005/002	Concrete and hardcore	0.10-0.40 m
005/004	Mid brown-grey sand, contained occasional pebbles and patches of light yellow sand	0.58-0.65 m
005/007	Rounded gravel	0.78-1.30 m
005/008	Dark grey sand and medium pebbles, contained occasional fragments of coal	0.40-0.46 m
005/009	Dark brown organic sandy silt containing shell fragments	0.50-0.58 m
005/015	Light red-brown sand	0.46-0.50 m
006/022	Dark grey silty sand, frequent fragments of animal bone, occasional oyster shell, lies beneath wind blown sand	1.00-1.30 m
006/023	Natural sand and gravel	1.30-1.60 m
010/024	Dark grey-brown silty sand	0.28-0.36 m
010/025	Grey stoney sand	0.44-0.60 m
010/026	Compact dark silty sand and boulders, possibly fill of [010/027], contained oyster shell	0.48-0.98 m
010/027	Possible cut feature, W = 1.38 m	0.48-0.98 m
010/028	Light yellow sand	0.26-0.40 m
030/029	Fill of 030/030 - dark brown compact sandy silt, large amounts of charcoal, shell fragments	0.54-0.83 m
030/030	Cut of pit or ditch, level bottomed, W = 0.8 m	0.54-0.83 m

1.3 Context Register

Trench/ Context No.	Description	Depth of deposit (m)
030/031	Road surface and concrete	0-0.36 m
030/032	Mid brown sand and gravel	0.36-0.46 m
030/033	Clean light brown sand	0.46-0.54 m
030/034	Natural gravel	0.54-1.00 m
036/036	Silty layer containing shell and coal fragments	0.50-0.65 m
036/038	Grey sandy silt	0.65-0.91 m
039/001	Road surface and concrete	0-0.40 m
039/002	Sandy clay and crushed sandstone, probably levelling deposit beneath road	0.40-0.55 m
039/003	Fill of service trench	0.55-0.8 m
039/004	Grey-brown silty clay	0.80-10 m
039/005	Natural sand and gravel	1.00-1.10 m
039/006	Loose pale brown sand and gravel	0.40-0.55 m
039/007	Mid-grey silty clay, contained crushed shell and iron pan, inclusions of sand and gravel, possibly natural tidal deposit	0.55-0.90 m
039/008	Dark grey silty clay containing shell fragments, similar to [039/004]	0.95-1.13 m
039/039	Dark grey compact shell midden deposit, contained white gritty pottery, ran intermittently along trench section	0.65-0.89 m
039/040	Light brown loose sand above [039/039]	0.37-0.65 m
039/041	Dark grey-brown silty sand below [039/039]	0.89-1.10 m
039/042	Dark grey silty clay below [039/039]	0.89-1.10 m
056/001	Road surface and concrete	0-0.40 m
056/002	Coarse gravel and sand	0.40-0.50 m
056/003	Crushed cinders and coarse sand	0.50-0.60 m
056/004	Loose light grey-brown sand	0.60-0.70 m
056/005	Loose light yellow-brown sand	0.70-0.85 m
056/006	Mixed sand	0.85-1.00 m
056/007	Pale yellow sand	1.00-1.50 m
068/000	Road surface and concrete	0-0.20 m
068/001	19th century demolition rubble, fill of [068/002]	0.20-1.10 m
068/002	Cut of pit or ditch, W = 1.65 m	0.20-1.10 m
068/003	Very dark brown sandy silt containing fragments of bone and slate, fills [068/004]	0.20-1.10 m
068/004	Cut of pit or ditch directly beneath road, W = 2.25 m	0.20-1.10 m
068/005	Natural sand	0.60-1.10 m
068/006	Grey brown silty sand containing flecks of mortar, shell and brick, lay beneath road	0.20-0.35 m
068/007	Dark grey-brown silty sand, occasional oyster shell, brick and sandstone fragments, fills [068/008]	0.30-1.10 m

1.3 Context Register

Trench/ Context No.	Description	Depth of deposit (m)
068/008	Cut of pit or ditch, W = 2.25 m	
068/009	Mid-brown sand with occasional flecks of charcoal	0.35-0.60 m
068/010	Dark brown sand containing mortar and brick, fills [068/011]	0.20-1.10 m
068/011	Cut of ditch or pit, W = 2 m	0.20-1.10 m
068/012	Layer of demolition rubble at north end of trench, fills [068/013]	0.65-1.10 m
068/013	Cut of feature, only one edge visible	0.65-1.10 m
069/001	Road surface and concrete	0-0.20 m
069/002	Demolition rubble	0.20-0.60 m
069/003	Mid grey-brown silty sand containing 19th century pottery, fills [069/004]	0.46-1.10 m
069/004	Cut of pit or ditch, W = 2.5 m	0.46-1.10 m
069/005	Mid brown sandy silt cultivation soil containing post-medieval pottery	0.46-0.84 m
069/006	Demolition rubble containing bricks and white china	0.20-1.10 m
069/007	Natural sand	0.84-1.10 m
069/008	Mixed gray brown silty sand containing white china	0.46-0.80 m
070/001	Road	0-0.10 m
070/002	Modern rubble	0.10-0.30 m
070/003	Mixed modern deposits	0.30-0.70 m
070/004	Dark brown sandy silt cultivation soil	0.70-0.90 m
070/005	Natural sand	0.90-1.00 m
074/001	Road	0-0.38 m
074/002	Modern levelling	0.38-0.42 m
074/003	Very light brown sand	0.42-0.55 m
074/004	Very compact sandy silt and gravel	0.55-0.68
074/005	Mid brown sand and small pebbles containing flecks of charcoal	0.68-0.83 m
074/006	Red-brown sandy gravel	0.83-1.10 m
099/001	Road	0-0.23 m
099/002	Modern levelling	0.23-0.43 m
099/003	Mid brown sandy silt cultivation soil containing fragments of charcoal	0.43-0.76 m
099/004	Natural yellow sand	0.76-0.97 m
105/001	Road	0-0.44 m
105/002	Pale brown sand	0.44-0.67 m
105/003	Mid brown silty sand containing crushed shell and charcoal	0.67-0.77
105/004	Pale brow sand and gravel	0.77-0.90 m
109/001	Road and modern deposits	u/k
109/002	Mid brown sandy silt	u/k

1.3 Context Register

Trench/ Context No.	Description	Depth of deposit (m)
109/003	Dark grey-brown sandy silt containing copious charcoal and crushed shell, also fragments of pottery	0.60-0.80 m
111/001	Road and modern deposits	0-0.30 m
111/002	Mid brown silty sand	0.30-0.45 m
111/003	Light brown silty sand, contained occasional flecks of charcoal	0.45-0.64 m
111/004	Grey-brown silty clay, contained animal bone	0.64-0.66 m
111/005	Natural sand and pebbles	0.66-0.90 m
113/001	Road and modern deposits	0-0.26 m
113/002	Mixed mortat, sandstone and brick	0.26-0.36 m
113/003	Grey-brown silty sand	0.36-0.48 m
113/004	Orange-brown fine sand	0.48-0.60 m
113/005	Dark organic sand, contained occasional pieces of animal bone. Intermittent upper fill of [113/007]	0.60-0.62 m
113/006	Light grey silty sand with occasional oyster shell, fill of [113/006]	0.62-0.92 m
113/007	Cut of shallow pit or ditch, W = 2 m minimum, not fully exposed	0.62-0.92 m
113/008	Natural sand	0.60-0.92 m
113/009	Natural beach pebbles	0.92-1.00 m
128/001	Road and concrete	0-0.30 m
128/002	Cinders	0.30-0.40 m
128/003	Pale brown coarse sand, above [128/006]	0.30-0.62 m
128/004	Compact mid brown silty sand	0.62-0.75 m
128/005	Mid brown sandy gravel	0.30-0.75 m
128/006	Possible wall footing constructed of large rounded cobbles and lime mortar W = 0.62 m	0.62-0.75 m
128/007	Light grey charcoal rich silty clay, possibly fills cut [128/008]	0.30-0.75
128/008	Possible cut of ditch or pit, sloping sides, base not reached W = 1.10 m	0.30-0.75 m
136/001	Pavement and concrete	0-0.32 m
136/002	Dark grey-brown clay sandy gravel, contains flecks of charcoal	0.32-0.47 m
136/003	Light brown sand and pebbles	0.47-0.51
136/004	Mid grey-brown compact silty sand containing large rounded pebbles and occasional oyster shell	0.51-0.77 m
147/001	Road	0-0.50 m
147/002	Bands of sand and gravel	0.50-1.20 m
147/003	Sandstone and lime mortar culvert, silted, no cut visible, crosses trench perpendicularly. W = 0.66 m, D = 0.20 m	1.00-1.20 m
150/001	Road	0-0.25 m
150/002	Mixed silty sand and fine gravel	0.28-0.54 m
150/003	Red sandstone cobbled surface, unbonded, W = 1.40 m	0.54-0.67 m

1.3 Context Register

Trench/ Context No.	Description	Depth of deposit (m)
150/004	Pale yellow sand	0.67-0.98 m
150/005	Natural sand and gravel	0.98-1.10 m
158/001	Road	0-0.10 m
158/002	Road cobbles	0.10-0.30 m
158/003	Cinders	0.30-0.53 m
158/004	Dark brown sandy cultivation soil containing occasional fragments of charcoal, has obvious A-B horizon	0.53-1.20 m
158/005	Natural sand	1.20-1.50 m
169/001	Road	0-0.08 m
169/002	Tarmac layer	0.08-0.13 m
169/003	Sandstone cobbles	0.13-0.16 m
169/004	Very dark brown silt with copious shell, sandstone and coal fragments	0.16-0.20 m
169/005	Natural sand	0.53-1.20 m
169/006	Sandstone block & shell mortar wall footing, W = 2m, D = 0.40m	~
174/001	Road	0-0.10 m
174/002	Concrete	0.10-0.14 m
174/004	Mixed sand and pebbles	0.14-0.60 m
174/006	Sandstone capstones of culvert [174/007] W = 0.46 m	0.60-0.70 m
174/007	Sandstone slab culvert, silted	0.70-1.00 m
199/001	Road	0-0.13 m
199/002	Old road surface	0.13-0.27 m
199/003	Orange-brown fine silty sand and pebbles	0.27-0.37 m
199/004	Orange sand and pebbles	0.37-0.57 m
199/005	Yellow-grey silty sand and pebbles	0.57-0.87 m
199/006	Orange-yellow sand and pebbles	0.87-0.99 m
199/007	Dark brown silt, rich in charcoal, contains oyster shells, broken brick and fragments of bone	0.99-1.49 m
200/001	Road	0-0.30 m
200/002	Orange-brown compact sand, contained flecks of charcoal	0.30-0.50 m
200/003	Dark brown moderately compact silty clay. Same as [199/007]	0.50-0.60 m
200/004	Cut of feature within fill of [200/006]. U-shaped profile, W = 1.50m	0.60-1.00 m
200/005	Dark brown moderately compact sandy silt and pebbles, contained fragments of lime mortar and sandstone. Final backfill of [200/012]	0.60-1.55 m
200/006	Originally interpreted as secondary cut in [200/012], seems more likely that this just represents the boundary of the final backfill [200/005] of the ditch. U-shaped base and gently sloped sides. W = 4.50 m, south edge bounds ditch silting sequence.	0.60-1.70 m

1.3 Context Register

Trench/ Context No.	Description	Depth of deposit (m)
200/007	Dark orange-brown silty sand and pebbles, result of weathering of cut [200/012], lies beneath [200/008], thickness = 0.1 m	0.60-1.70 m
200/008	Fill of [200/008], probably result of weathering of cut [200/012], lies beneath [200/010], thickness = 0.1 m	0.60-1.70 m
200/009	Orange-yellow sand, weathering fill of [200/012], thickness 0.15m	0.60-1.70 m
200/010	Dark brown sandy silt and rounded pebbles, contained chips of sandstone, upper fill of [200/012], probably result of weathering, thickness = 0.20 m	0.60-1.70 m
200/011	Orange-yellow silty sand and rounded pebbles, fills [200/004], no finds	0.60-1.00 m
200/012	Primary cut of ditch sequence, truncated by [200/006], has several fills, probably result of weathering, plus final backfill [200/005]. W = 6.5 m	0.50-1.70 m
200/013	Grey clay, basal fill of [200/006]	1.55-1.70 m
200/014	Thin demolition or levelling layer directly beneath road, at 25 m from N end of trench, contains mortar and tile fragments, poorly defined	0.30-0.41 m
200/015	Orange brown silty sand, contained flecks of charcoal and sandstone, possible fill of cut for [200/017]	0.41-0.91 m
200/016	Mixed layer of clay and sand, with lenses of very dark silty material, directly above natural, possible fill of cut for [200/017]	0.91-1.2 m
200/017	Sandstone box culvert within [200/015], modern ceramic drains feed into culvert. W = 1 m, H = 0.35 m	0.95-1.30 m
200/018	Sandstone box culvert, under mixed deposits beneath road, W = 0.8 m, runs diagonally across trench, similar to [200/017]	0.50-0.98 m
200/019	Grey-green compact silty clay with more sand in upper part of deposit, fills culvert [200/018]	0.65-0.90 m
200/020	Sandstone culvert, similar to [200/018], cut into [200/021]	0.80 m max
200/021	Yellow-brown silty sand, contained occasional charcoal fragments	0.80 m max
200/022	Pink-grey compact clay overlying [200/021], 74 m from N end of trench	u/k
220/001	Road	0-0.40 m
220/002	Deposit of broken sandstone, crushed brick, glass and concrete demolition rubble	0.40-0.80 m
220/003	Natural sand	0.80-1.50 m
227/001	Road	0-0.14 m
227/002	Crushed sandstone rubble, fills [227/003]	0.14-0.78 m
227/003	Cut of linear feature, steep sides, level base W = 0.46 m	0.14-0.78 m
227/004	Mid grey-brown silty sand cultivation soil	0.14-0.95 m
228/001	Road	0-0.22 m

1.3 Context Register

Trench/ Context No.	Description	Depth of deposit (m)
228/002	Yellow broken sandstone rubble, fill of [228/003], same as [227/002]	0.22-0.72 m
228/003	Cut of linear feature, same as [227/003], more disturbed and irregular, W = 0.48 m	0.22-0.72 m
228/004	Mid grey-brown silty sand cultivation soil, same as [227/004]	0.22-1.10 m
241/001	Road	0-0.10 m
241/002	Modern disturbance	0.10-0.52 m
241/003	Large sub-angular sandstone cobbles, possibly similar surface to [150/003]	0.52-0.70 m
241/004	Natural light brown sand	0.70-1.10 m
263/001	Road	0-0.20 m
263/002	Modern disturbance/levelling	0.20-0.50 m
263/003	Mid brown sandy silt, contained flecks of charcoal, 12.6 m from NW end of trench	0.20-1.10 m
263/004	Light brown sand and pebbles, bands of silt, 27 m from NW end of trench	0.49-1.08 m
263/005	Mid brown fine sandy silt, 36 m from NW end of trench	0.51-0.98 m
263/006	Compact grey-brown sandy silt, contained copious charcoal fragments	0.31-0.95 m
264/001	Road	0-0.10 m
264/002	Modern levelling	0.0-1.10 m
264/003	Lime mortar bonded sandstone vaulted arch, badly damaged in places, runs approx SW-NE. W = 3.5 m,	
264/004	Arch support on NW side of 264/003. Mortar bonded sandstone and brick	0.10-1.20 m
264/005	Arch support on SE side of 264/003. Mortar bonded sandstone and brick	0.10-1.20 m
264/006	Fill of arch - very dark brown silt, large modern drain runs down centre of channel	
264/007	General context for mill lade	
271/001	Road	0-0.22 m
271/002	Redeposited sand and gravel	0.22-1.46 m
271/003	Lime mortar bonded rubble wall, 2 courses visible, crosses trench running approx SW-NE, overlain by [271/002]. W = 0.40 m	1.08-1.46 m
271/004	Mid brown silty sand, underlies [271/003]	1.46 m
271/005	Road cobbles beneath modern road surface	0.10-0.30 m
272/001	Road	0-0.17 m
272/002	Old cobbled road surface, abutts north edge of [272/004]	0.17-0.30 m

1.3 Context Register

Trench/ Context No.	Description	Depth of deposit (m)
272/003	Dark brown loose sandy silt cultivation soil, contained flecks of charcoal and fragments of sandstone	0.30-0.60 m
272/004	Mortar bonded sandstone/tile wall footing, crossed trench, in line with existing EW wall, probably boundary feature, possibly back of rigs. W = 0.50 m	0.30-0.95 m
272/005	Mid brown loose sandy silt, contained charcoal fragments, underlies [272/003]	0.60-0.85 m
272/006	Old road surface to S of [272/004], composed of cobbles and red aggregate	0.15-0.20 m
278/001	Road	0-0.20 m
278/002	Modern disturbance	0.20-0.60 m
278/003	Mixed natural sand	0.60-0.80 m
278/004	Dark brown silty sand containing fragments of shell, fills cut feature [278/005]	0.70-1.32 m
278/005	Cut of ditch or pit, vertical sides and level base, W = 0.80 m	0.70-1.32 m
278/006	Natural sand	0.78-1.75 m
278/007	Very dark brown sand/cinder layer beneath road	0.24-0.34 m
278/008	Light red-brown sand and rounded pebbles	0.34-0.49 m
278/009	Mixed dark brown silty sand, contained fragments of bone and sandstone, appears in section at 22 m from south end of trench	0.49-0.60 m
278/010	Mixed fine mid brown sand	0.60-0.86 m
278/011	Layer of sandstone rubble	0.86-0.95
278/012	Mid brown silty clay, contained occasional complete oyster shells and fragments of charcoal	0.95-1.29 m
278/013	Light brown clay sand, contained fragments of crushed shell	1.29-1.59 m
285/001	Road and modern material	0-0.49 m
285/002	Intermittent dark grey-brown sandy silt, contained fragments of charcoal and crushed shell	0.49 m
286/001	Road and modern rubble	0-0.40 m
286/002	Dark brown sandy silt cultivation soil	0.40-0.82 m
287/001	Road and modern rubble	0-0.52 m
287/002	Dark brown sandy silt cultivation soil	0.52-1.06 m
288/001	Road and modern rubble	0-0.57 m
288/002	Dark brown sandy silt cultivation soil	0.57-0.86 m
289/001	Road and modern rubble	0-0.44 m
289/002	Dark brown sandy silt cultivation soil	0.44-0.95 m
290/001	Road and modern rubble	0-0.45 m
290/002	Dark brown sandy silt cultivation soil	0.45-0.83 m

1.3 Context Register

Trench/ Context No.	Description	Depth of deposit (m)
293/001	Road and modern rubble	0-0.41 m
293/002	Dark brown sandy silt cultivation soil	0.41-1.13 m
294/001	Road and modern rubble	0-0.60 m
294/002	Dark brown sandy silt cultivation soil	0.60-0.99 m
295/001	Road and modern rubble	0-0.40 m
295/002	Dark brown sandy silt cultivation soil	0.40-1.02 m
296/001	Road and modern rubble	0-0.32 m
296/002	Dark brown sandy silt cultivation soil	0.32-1.00 m
297/001	Road and modern rubble	0-0.40 m
297/002	Dark brown sandy silt cultivation soil	0.40-1.08 m
298/001	Road and modern rubble	0-0.32 m
298/002	Dark brown sandy silt cultivation soil	0.32-0.89 m
299/001	Road and modern rubble	0-0.44 m
299/002	Dark brown sandy silt cultivation soil	0.44-0.97 m
300/001	Road and modern rubble	0-0.38 m
300/002	Dark brown sandy silt cultivation soil	0.38-0.99 m
302/001	Road and modern rubble	0-0.40 m
302/002	Dark brown sandy silt cultivation soil	0.40-1.05 m
304/001	Road and modern rubble	0-0.39 m
304/002	Dark brown sandy silt cultivation soil	0.39-0.85 m
310/001	Road and modern rubble	0-0.45
310/002	Dark brown sandy silt cultivation soil	0.45-1.07 m
311/001	Road	0-0.10 m
311/002	Modern hardcore	0.10-0.40 m
311/003	Mid grey silty clay contained occasional fragments of charcoal, contained lenses of decomposed organic matter	0.40-0.85 m
311/004	Light orange-brown silty sand	0.8-0.95 m
311/005	Mixed interface between [311/002] and [311/006]	0.40-0.50 m
311/006	Coarse orange-brown sand and rounded pebbles	0.50-0.95 m
311/007	Modern disturbance	0.13-0.35 m
311/008	Large angular mortar bonded sandstone blocks, possibly an old floor surface	0.35-0.60 m
311/009	Sandy silt, contained lime mortar and oyster shells	0.60-0.80 m

1.3 Context Register

Trench/ Context No.	Description	Depth of deposit (m)
311/010	Waterlogged clay silt, contained rounded pebbles and fragments of charcoal, fill of [311/011]	0.60-1.05 m
311/011	Pit or ditch, probably modern	0.60-1.05 m
311/012	Natural sand	
311/013	Mid grey silty clay, similar to [311/003]	0.70-1.05 m
313/001	Road and modern rubble	0-0.50 m
313/002	Dark brown sandy silt cultivation soil	0.50-1.07 m
314/001	Road and modern rubble	0-0.50 m
314/002	Dark brown sandy silt cultivation soil	0.50-0.88 m
315/001	Road and modern rubble	0-0.50 m
315/002	Dark brown sandy silt cultivation soil	0.50-0.92 m
316/001	Road and modern rubble	0-0.42 m
316/002	Dark brown sandy silt cultivation soil	0.42-1.17 m
317/001	Road and modern rubble	0-0.60 m
317/002	Dark brown sandy silt cultivation soil	0.60-1.02 m
318/001	Road and modern rubble	0-0.53 m
318/002	Dark brown sandy silt cultivation soil	0.53-0.94 m
322/001	Road and modern rubble	0-0.50 m
322/002	Dark brown sandy silt cultivation soil	0.50-1.09 m
324/001	Road	0-0.10 m
324/002	Hardcore	0.10-0.40 m
324/003	Very dark brown sandy silt, contained fragments of lime mortar and crushed sandstone	0.40-0.63 m
324/004	Orange-brown sand and gravel	0.63-0.87 m
324/005	Grey-brown clay silt and rounded pebbles, possibly contained charcoal fragments	0.87-1.04 m
384/001	Road	0-0.09 m
384/002	Mixed modern deposits, possibly the fills of service trenches running parallel to the track	0.09-0.82 m
384/003	Fine very light brown sand	0.82-1.30 m
384/004	Mid brown sand and gravel, mixed	0.12-0.25 m
384/005	Mixed orange-brown sand, contained occasional pieces of charcoal	0.25-0.58 m
384/006	Mixed mid-brown silty sand and gravel	0.58-0.79 m
384/007	Very compact grey-brown sandy clay	0.79-0.86 m

1.3 Context Register

Trench/ Context No.	Description	Depth of deposit (m)
384/008	Modern disturbance, possible 'made ground', composed of sand, sandstone, sandy silt	0.14-0.91 m
384/009	Very dark brown silty sand, fills cut feature [384/010]	0.91-1.56 m
384/010	Cut of feature, has gently sloped sides and rounded base, W = 1.26 m	0.91-1.56 m
384/011	Fine gravel	1.43-1.56 m
384/012	Very compact dark brown dirty sand beneath road	0.15-0.26 m
384/013	Very compact mixed light sand	0.26-0.33 m
384/014	Compact light sand and fine gravel	0.33-0.45 m
384/015	Very hard orange-brown sand and gravel beneath [384/008]	0.90-0.96 m
398/001	Road	0-0.10 m
398/002	Sandstone rubble	0.10-0.27 m
398/003	Dark brown cultivation soil	0.27-0.90 m
398/004	Natural sand	0.90-1.10 m
399/001	Road	0-0.10 m
399/002	Concrete	0.10-0.55 m
399/003	Mixed sandy gravel	0.55-0.78 m
399/004	Sandstone built culvert, lime mortar bonding, W = 0.68 m, H = 0.60 m, channel is silted up	0.55-1.20 m
399/005	Grey brown sandy silt fill of [399/004]	0.92-1.10 m
399/006	Natural sand and fine gravel	0.78-1.20 m
399/007	Natural sand and rounded pebbles	1.20-1.40 m
414/001	Road	0-0.09 m
414/002	Modern disturbance	0.09-0.51 m
414/003	Dark brown silty sand, contained fragments of brick	0.51-0.63 m
414/004	Dark silt, charcoal and broken white china	0.63-0.69 m
414/005	Natural mid-brown sandy silt	
481/001	Road	0-0.13 m
481/002	Modern levelling	0.13-0.28 m
481/003	Mixed dark brown sandy silt, contained gravel, sandstone and charcoal	0.28-0.38 m
481/004	Sandstone wall, lime mortar bonded. 3-4 irregular courses exposed in section. H = 0.50 m	0.50-0.90 m
485/001	Modern road	0-0.10 m
485/002	Thin mixed layer of dark brown silt and gravel	0.10-0.15 m
485/003	Modern hardcore	0.15-0.35 m
485/004	Dark brown sandy silt with gravel, sandstone flecks, charcoal. Fills cut [485/005]	0.35-1.20 m
485/005	Cut for culvert [485/006]	0.35-1.20 m

1.3 Context Register

Trench/ Context No.	Description	Depth of deposit (m)
485/006	Sandstone culvert, unbonded. Capstones rest on irregularly coursed rubble wall, no stone base. W = 0.80 m	0.45-1.20 m
485/007	Unsorted silty sand and clay, with rounded gravel at the top and bottom of the deposit, fill of culvert [485/006]	0.63-1.20 m
485/008	random sandstone blocks in trench section, possibly related to [485/006]	
520/001	Road	0-0.10 m
520/002	Concrete	0.10-0.30 m
520/003	Mid-brown dirty sand	0.30-0.45 m
520/004	Fill of modern water pipe cut [520/004]	0.30-0.86 m
520/005	Cut of modern water pipe trench, truncates [520/006]	0.30-0.86 m
520/006	Dark brown compact sandy silt with occasional oyster shells, fill of [520/007]	0.86-1.14 m
520/007	Steep sided cut, base unknown, W = 0.40 m	0.86-1.14 m
520/008	Small lense of dark brown silty sand, contained fragments of bone and shell	0.45-0.53 m
520/009	Natural pale sand	0.53-1.14 m
527/001	Road and hardcore	0-0.40 m
527/002	Intermittent very dark brown sandy silt, very strong smell of hydrocarbons	0.40-0.50 m
527/003	Mid brown sandy silt ploughsoil, depth increases northwards along trench	0.50-1.00 m
539/001	Road	0-0.09 m
539/002	Concrete	0.09-0.29 m
539/003	Mid brown compact silty sand	0.26-0.58 m
539/004	Pale wind-blown sand	0.29-0.38 m
539/005	Dark brown compact silty sand, rich in shell fragments, runs along section for approx. 25 m	0.38-0.62 m
539/006	Natural sand	0.58-1.18
539/007	Mixed sand, contained charcoal fragments	0.45-0.69 m
539/008	Compact grey-brown silty sand, contained fine gravel, flecks of brick and charcoal and occasional fragments of marine shell	0.65-0.72 m
539/009	Dark grey-brown sandy silt with frequent shell fragments and pieces of brick, lies in shallow pocket above [539/008]	0.50-0.62 m
582/001	Road	0-0.11 m
582/002	Mixed modern deposits	0.11-0.45 m
582/003	Very dark brown sandy silt cultivation soil, contained occasional bone fragments	0.45-0.96 m
584/001	Road	0-0.09 m
584/002	Mixed modern deposits	0.09-0.40 m

1.3 Context Register

Trench/ Context No.	Description	Depth of deposit (m)
584/003	Very dark brown sandy silt cultivation soil, contained occasional bone fragments	0.40-0.94 m
586/001	Road	0-0.10 m
586/002	Concrete	0.10-0.36 m
586/003	Wind-blown sand	0.36-0.46 m
586/004	Mid brown sandy silt, contained occasional shell	0.46-0.67 m
586/005	Natural sand	0.67-1.09 m
586/006	Silted fill of culvert [586/007], contains C19th pottery and glass, very compact banded sediment	0.30-1.10 m
586/007	Unbonded sandstone culvert, top badly damaged by modern digging. W = 0.80 m	0.30-1.10 m
599/001	Road	0-0.10 m
599/002	Concrete	0.10-0.35 m
599/003	Redeposited sand	0.35-0.54 m
599/004	Fill of cut [599/005], loose mid brown sandy silt with rounded pebbles, chunks of red sandstone, bone and shell, no obvious sorting	0.54-1.16 m
599/005	Steep sided cut feature, crosses trench at an angle, full depth not known. W = 2.00 m	0.54-1.16 m
599/006	Natural sand	0.54-1.16 m
605/001	Road	0-0.14 m
605/002	Concrete	0.14-0.36 m
605/003	Layer of crushed cinders	0.36-0.52 m
605/004	Mid brown sandy silt, fills cut features [605/005&006], generally homogenous deposit	0.36-1.2 m
605/005	Steep sided cut feature crossing trench, W = 1.30 m, max depth unknown	0.60-1.20 m
605/006	Steep sided cut feature crossing trench, W = 1.00 m, max depth unknown	0.60-1.20 m
612/001	Road	0-0.10 m
612/002	Hardcore	0.10-0.20 m
612/003	Rubble	0.20-0.40 m
612/004	Dark brown/black sandy loam, contained small pebbles, marine shell and animal bone fragments	0.40-0.45 m
612/005	Orange-brown sand and gravel	0.55-0.70 m
612/006	Natural gravel	0.70-0.90 m
612/007	Natural sand	0.90-1.30 m
612/008	Mixed sand and gravel	0.60-1.10 m
612/009	Cobbles	0.15-0.30 m
612/010	Dark brown sand and rubble	0.30-0.40 m
612/011	Natural coal seam	0.65-0.67 m

1.3 Context Register

Trench/ Context No.	Description	Depth of deposit (m)
612/012	Orange sand	0.40-0.44m
612/013	Mid brown sand and rubble	0.44-0.80 m
612/014	Rubble and tar	
612/015	Very dark brown sandy loam and rubble	0.35-0.75 m
613/001	Road	0-0.20 m
613/002	Fill of cut [613/008]	0.20-0.75 m
613/003	Top of sandstone box culvert, unbonded sandstone slabs, crossed trench over a distance of 55 m	0.75-1.01 m
613/004	Fill of culvert, dark brown sandy silt, no finds	1.01-1.36 m
613/005	Base of culvert - smaller unbonded sandstone slabs	1.36-1.41 m
613/006	Buried dark brown ploughsoil	0.55-0.95 m
613/007	Buried subsoil - mid brown sandy silt	0.95-1.40 m
613/008	Cut for culvert W = 0.50 m	0.20-1.40 m
613/009	Natural	1.41-1.53 m
659/001	Road	0-0.10 m
659/002	Hardcore	0.10-0.20 m
659/003	Dark brown sandy loam and rubble	0.30-0.40 m
659/004	Light brown sandy loam cultivation soil	0.40-0.44 m
659/005	Dark brown sandy loam cultivation soil, contained fragments of shell, coal and charcoal	0.44-0.52 m
659/006	Light brown sandstone rubble layer	0.52-0.60 m
659/007	Dark brown sandy loam, contained fragments of shell, coal and charcoal, similar to [659/005], contained green-glazed pottery	0.60-1.00 m
659/008	Orange gravel	1.00-1.20 m
659/009	Dark brown sandy loam, mixed with sand	0.40-0.52 m
659/010	Dark grey-brown sandy loam with small pebbles	0.60-0.74 m
659/011	Dark brown sandy loam	0.60-0.64 m
659/012	Light brown yellow sand	0.64-0.78 m
659/013	Brown sand	0.78-0.92 m
662/001	Road	0-0.17 m
662/002	Garden soil	0.17-0.33 m
662/003	Natural sand and gravel	0.33-1.80 m
664/001	Road	0-0.10
664/002	Concrete	0.10-0.26 m
664/003	Wind-blown sand, intermittent along length of trench	0.26-0.40 m
664/004	Mid brown silty sand, contained fragments of oyster shell, some complete oyster and whelk shells. Interleaved with lenses of wind-blown sand, runs entire length of trench at fairly constant thickness and depth. Midden deposit, accumulated over long time period	0.26-0.73 m
664/005	Natural sand and gravel	0.73-1.10 m

1.3 Context Register

Trench/ Context No.	Description	Depth of deposit (m)
665/001	Road and concrete	0-0.24 m
665/002	Old cobbled road surface	0.24-0.40 m
665/003	Same as 664/003	0.50-0.60 m
665/004	Same as 664/004 - deposit continues for another 10 metres before becoming progressively more interleaved with wind-blown sand and fading out	0.40-0.84 m
665/005	Natural sand and shale	0.84-1.00 m
665/006	Natural mid brown sandy clay	1.00-1.20 m
666/001	Road and concrete	0-0.32 m
666/002	Mixed/disturbed sand	0.32-0.64 m
666/003	Mid brown silty sand with occasional shells	0.64-0.90 m
666/004	Natural sand	0.90-1.05 m
666/005	Dark brown silty clay - natural	1.05-1.20 m
666/006	Very compact sand directly beneath road at 10 m, 20 m	0.34-0.47 m
666/007	Mixed sand beneath road at 29 m	0.38-0.78 m
666/008	Very compact mid to dark brown sandy silt at 20-29 m	0.78-1.25 m
694/001	Road	0-0.10 m
694/002	Concrete	0.10-0.30 m
694/003	Grey-brown sandy loam with occasional shell and charcoal inclusions	0.30-0.50 m
694/004	Natural sand	0.50-1.10 m
699/001	Road	0-0.10 m
699/002	Concrete	0.10-0.30 m
699/003	Mixed sand and rubble	0.20-0.36 m
699/004	Mixed deposit, contained gravel, coal, sandstone and shell fragments	0.36-0.42 m
699/005	Light brown mixed sand, gravel and rubble	0.42-0.80 m
699/006	Mid brown sand and rubble, fills hollow or scoop in section	0.42-1.02 m
699/007	Dark brown sand, gravel and sandstone blocks, fills hollow or scoop in section	0.20-0.86 m
699/008	Natural sand	0.20-1.50 m
699/009	Dark brown sandy silt midden layer, contained fragments of shell and pottery	0.30-0.55 m
699/010	Natural sand	0.55-1.50 m
699/011	Cut of feature, truncates 699/009, vertical sides, level base, W = 0.48 m	0.30-1.10 m
699/012	Fill of 699/011, dark brown sandy loam, bands of gravel to top of deposit, different phases of deposition	0.30-1.10 m
701/001	Road	0-0.10 m
701/002	Rubble	0.10-0.25 m

1.3 Context Register

Trench/ Context No.	Description	Depth of deposit (m)
701/003	Red sandstone rubble	0.25-0.32 m
701/004	Mid brown cultivation soil, contained fragment of pottery	0.32-0.50 m
701/005	Natural sand	0.50-1.10 m
702/001	Road	0-0.10 m
702/002	Rubble	0.10-0.25 m
702/003	Red sandstone rubble	0.25-0.32 m
702/004	Mid brown cultivation soil, contained fragment of pottery	0.32-0.50 m
702/005	Natural sand	0.50-1.10 m
703/001	Road	0-0.10 m
703/002	Rubble	0.10-0.25 m
703/003	Red sandstone rubble	0.25-0.32 m
703/004	Mid brown cultivation soil, contained fragment of pottery	0.32-0.50 m
703/005	Natural sand	0.50-1.10 m
713/001	Road	0-0.10 m
713/002	Rubble	0.10-0.20 m
713/003	Red sandstone rubble	0.20-0.35 m
713/004	Mid brown cultivation soil, contained fragment of pottery	0.35-0.62 m
713/005	Natural sand	0.62-1.00 m
733/001	Road	0-0.10 m
733/002	Concrete	0.10-0.40 m
733/003	Mid brown sandy loam, interleaved with wind-blown sand, contained fragments of shell and pottery	0.40-0.51 m
733/004	Cut of feature seen in section, vertical sides and V-shaped base, truncates 733/003	0.40.94 m
733/005	Fill of 733/004 - Mixed mid brown sandy loam and gravel, possibly modern feature	0.40-0.94 m
733/006	Natural sand	0.51-1.00 m
733/007	Area of burned stone and demolition rubble beneath 733/003, contained broken road cobble	0.42-0.74 m
757/001	Road	0-0.10 m
757/002	Concrete	0.10-0.40 m
757/003	Grey loamy silt with angular rubble	0.40-0.55 m
757/004	Mid brown sand	0.55-0.65 m
757/005	Dark grey-brown silty sand midden deposit	0.65-0.95 m
757/006	Very dark brown silty sand midden deposit, containing fragments of marine shell	0.95-1.15 m
757/007	Light brown sandy silt	1.15-1.30 m
757/008	Light grey brown silty sand midden deposit	1.30-1.40 m
762/001	Road and concrete	0-0.45 m

1.3 Context Register

Trench/ Context No.	Description	Depth of deposit (m)
762/002	Grey-brown silty sand midden deposit	0.45-0.55 m
762/003	Natural sand and gravel	0.55-0.85 m
763/001	Road and concrete	0-0.40 m
763/002	Grey-brown silty sand midden deposit	0.40-0.55 m
763/003	Natural sand and gravel	0.55-0.90 m
820/001	Road	0-0.50 m
820/002	Backfill of old gas main	0.50-1.40 m
820/003	Mortar bonded sandstone and brick culvert, ran along 12 m of trench. Capstones were large slabs, W = 0.5 m. Sides built of mortar bonded rubble and occasional bricks. Culvert was samaged by existing services and only partly exposed by the pipe trench.	1.14-1.40 m
820/004	Red-brown sandy silt	1.40-1.80 m
842/001	Road and concrete	0-0.40 m
842/002	Dark brown sandy silt, contained occasional oyster shell, filled shallow hollow or scoop, W = 1.90 m	0.40-0.47 m
842/003	Natural sand and rounded pebbles	0.47-1.20 m
847/001	Road and concrete	0-0.30 m
847/002	Dark brown sandy loam cultivation soil	0.30-0.50 m
847/003	Natural sand and gravel	0.50-1.00 m
848/001	Road	0-0.20 m
848/002	Concrete	0.20-0.38 m
848/003	Compact yellow sand, redeposited	0.38-0.50 m
848/004	Dark brown compact cultivation soil	0.50-0.60 m
848/005	Loose light brown sand	0.60-0.78 m
848/006	Grey brown sand and gravel, contained blocks of sandstone	0.78-1.20 m
848/007	Loose yellow sand, probably natural	0.32-0.66 m
848/008	Grey brown sand and gravel, natural	0.66-0.86 m
848/009	Natural sand	0.86-1.20 m
848/010	Sand and gravel fill of [848/012], surrounded structure [848/011], contained pottery and glass	0.32-1.20 m
848/011	Wall footing constructed of shaped sandstone blocks, lime mortar bonded. W = 0.8 m, H = 0.6 m. 2-3 courses.	0.40-1.02 m
848/012	Vertical sided cut for structure [848/011], W = 1.14 m	0.32-1.20 m
899/001	Road and yellow-brown sand over [899/002]	0-0.60 m
899/002	Capstones of culvert, L = 0.75 m, W = 0.50 m, H = 0.14 m	0.60-0.74 m
899/003	Fill of culvert cut	0.60-1.12 m
899/004	Upper fill of culvert	0.80-0.94 m
899/005	Primary fill of culvert	0.94-1.00 m

1.3 Context Register

Trench/ Context No.	Description	Depth of deposit (m)
899/006	Natural sand	1.10-1.30 m
899/007	Stone sides and base of culvert. W = 0.90 m, D = 0.52 m	0.71-1.12 m
899/008	Material infilling stones sealing [899/004]	0.60-0.74 m
899/009	Gravelly sand filling culvert cut in N of trench	
899/010	Culvert capstones	0.53 m
899/011	Packing and backfill around [899/010]	
899/012	Clay bonding around [899/010]	
899/013	Side branch of culvert. W = 0.82 m. Slab cap and base, rubble walls.	0.48-1.18 m
899/014	Side branch of culvert W = 1.6 m. Slab capstones, rubble walls and floor	0.40-1.16 m
899/015	Light brown sandy silt	
899/016	Side branch of culvert. W = 0.90 m. Slab capstones, rubble walls and base	0.92-1.22 m

Explanation of context numbering system: Contexts have been given a six-figure number, in two parts separated by a forward slash. The first part represents the trench number, the second part represents a single context within that particular trench. Contexts from this project may only be identified uniquely when *both* parts of this number are given.

1.4 Sketch record sheet register

Record No.	Trench No.	Description
1	1	Location of Tr 1
2	2	Location of Tr 2
3	3 & 6	Location of Tr 3 & 6; North facing section of Tr 3; South facing section of Tr 6 showing pit [006/018]
4	5	South facing sections of Tr 5, 0-20 m
5	5	South facing sections of Tr 5, 30-43 m
6	5	South facing sections of Tr 5, 45-55 m
7	6 & 7	West facing section of Tr 6; Location of Tr 7
8	10	North facing section of deposits
9	11	West facing section of deposits
10	68	East facing sections of features [068/002, 004 & 008]
11	68	East facing sections of features [068/011 & 013] and deposits
12	69	West facing section of feature [069/004]
13	109	Trench location
14	113	South east facing section of possible feature[113/007]
15	128	North facing section of feature [128/008] and possible wall footing [128/006]
16	147	Sandstone culvert [147/003] in plan
17	150	South facing section of cobbled surface [150/003]
18	150	North facing section of cobbled surface [150/003]
19	174	South facing section of deposits in Tr 174; Plan of deposits in Tr 174
20	186	West facing section of complex deposits in Tr 186
21	227	West facing section of wall foundation [227/003]
22	228	East facing section of wall foundation [228/003]
23	278	West facing section of ditch or pit [278/005]
24	311	North facing section showing changes in deposits, possible watercourse
25	278	Dimensions of end box of Tr 278
26	399	North west facing section of sandstone culvert [399-004]; plan of culvert alignment
27	520	South facing section of deposits and possible feature [520/007]
28	539	South facing section of midden deposits
29	586	South facing section of disturbed sandstone culvert [586/007]
30	599	South facing section of large pit or ditch [599/005]; plan of feature edges
31	605	South facing section of features [605/005 & 006]
32	612	South west facing section of deposits in Tr 612 at 13.5 m, 26 m, 40.5 m, 41 m, 69.5 m, 75.5 m & 85.5 m
33	613	Plan of culvert capstones [613/003]
34	659	South west facing section of deposits in Tr 659 at 2 m, 16 m, 29 m, 44 m
35	665	South west facing section of midden deposit [665/004]
36	699	South facing section of wall footing [699/007]
37	699	South facing section of deposits in Tr 699 at 102 m, 129 m, 148 m
38	733	South facing section of feature [733/004]; deposits in section at 10m & 25m
39	757	Deposits in section
40	820	Culvert [820/003] - plan of extent
41	842	Plan of deposits in section at 44-46 m
42	848	Deposits in section at 13m; Wall footing [848/010] at 19 m
43	384	West facing section of change in deposits
44	382	Plan of trench
45	384	West facing section of pit [384/010]
46	200	East facing section of features [200/006 & 012]

1.5 Drawing Register

Drawing No.	Description
1	Trench 1, south facing section at 1 m from west end
2	Trench 2, north facing section at 30 m from west end
3	Trench 10, north facing section at 11-15 m from east end
4	Trench 30, north facing section of pit [030/030]
5	Trench 36, north facing section of shell layer [036/036]
6	Trench 39, north facing section of midden layer [039/039]
7	OS 1:1000 sheet 20 - trench locations
8	Trench 264 - plan of extent of mill lead supports [264/004 & 005]
9	Trench 271 - plan of extent of rubble wall [271/003]
10	Trench 312 - section drawings and context descriptions
11	Trench 371 - north facing section of structure [371/008]
12	Trench 613 - section drawings of culvert and context descriptions
13	Trench locations Balcarres Road 1:1000
14	OS 1:1000 sheet 1 - trench locations
15	OS 1:1000 sheet 2 - trench locations
16	OS 1:1000 sheet 3 - trench locations
17	OS 1:1000 sheet 2 - trench locations
18	OS 1:1000 sheet 4 - trench locations
19	Trench locations Millhill 1:1000
20	OS 1:1000 sheet 5 - trench locations
21	OS 1:1000 sheet 8 - trench locations
22	OS 1:1000 sheet 9 - trench locations
23	OS 1:1000 sheet 10 - trench locations
24	OS 1:1000 sheet 11 - trench locations
25	OS 1:1000 sheet 12 - trench locations
26	OS 1:1000 sheet 15 - trench locations
27	OS 1:1000 sheet 15 - trench locations south of river
28	OS 1:1000 sheet 16 - trench locations
29	OS 1:1000 sheet 17 - trench locations
30	OS 1:1000 sheet 16 - trench location by old bridge
31	OS 1:1000 sheet 17 - trench locations Mansefield Avenue
32	OS 1:1000 sheet 18 - trench locations
33	OS 1:1000 sheet 19 - trench locations
34	OS 1:1000 sheet 21 - trench locations
35	OS 1:1000 sheet 24 - trench locations
36	OS 1:1000 sheet 27 - trench locations
37	OS 1:1000 sheet 28 - trench locations
38	OS 1:1000 sheet 28 - trench location at top of Inveresk Brae
39	OS 1:1000 sheet 31 - trench locations
40	OS 1:1000 sheet 32 - trench locations
41	OS 1:1000 sheet 33 - trench locations
42	Trench 899, section of culvert [899/002]
43	Trench 899, plan of culvert [899/002]
44	Trench 899, section of culvert sidestones [899007]
45	Trench 899, plan of culvert capstones [899/010]
46	Trench 899, section of culvert [899/013]

1.5 Drawing Register

Drawing No.	Description
47	Trench 899, section of culvert [899/014]

1.6 Photographic Register

No.	CP	CS	Direction Facing	Description	Field label
1	1	1	N	Removal of culvert already recorded	CRI03 1:1
2	2	2	N	Base of culvert at c 2m from where first seen	CRI03 1:2
3	1	1	N	Part of culvert exposed in south facing section	CRI03 1:3
4	1	1	N	Culvert showing lid and sides during removal from north side	CRI03 1:4
5	1	1	N	Culvert showing lid and sides during removal from north side	CRI03 1:5
6	1	1	-	Shot of top of culvert, moving northwards	CRI03 1:6+
7	1	1	-	Shot of top of culvert, moving northwards	CRI03 1:6+
8	1	1	-	Shot of top of culvert, moving northwards	CRI03 1:6+
9	1	1	-	Shot of top of culvert, moving northwards	CRI03 1:6+
10	1	1	-	Shot of top of culvert, moving northwards	CRI03 1:6+
11	1	1	-	Shot of top of culvert, moving northwards	CRI03 1:6+
12	1	1	-	Shot of top of culvert, moving northwards	CRI03 1:6+
13	1	1	-	Shot of top of culvert, moving northwards	CRI03 1:6+
14	1	1	-	Shot of top of culvert, moving northwards	CRI03 1:6+
15	1	1	-	Shot of top of culvert, moving northwards	CRI03 1:6+
16	1	1	-	Shot of top of culvert, moving northwards	CRI03 1:6+
17	1	1	-	Shot of top of culvert, moving northwards	CRI03 1:6+
18	1	1	-	Shot of top of culvert, moving northwards	CRI03 1:6+
19	1	1	-	Shot of top of culvert, moving northwards	CRI03 1:6+
20	1	2	-	Shot of top of culvert, moving northwards	CRI03 1:6+
21	3	4	N	South facing section through culvert at 8.80 m	CRI03 2:1-4
22	1	1	W	Capstones at 30m	CRI03 2:5
23	1	1	N	Base of culvert stones at 0 m after cap removed	CRI03 2:6
24	1	1	W	Stones in section towards Double Dykes Road	CRI03 2:7
25	1	1	E	Stones in section towards Double Dykes Road	CRI03 2:8
26	1	1	E	Stones in section towards Double Dykes Road	CRI03 2:9
27	2	1	E	Stones in section towards Double Dykes Road	CRI03 2:10
28	1	1	N	Section of culvert at 7m (plan)	CRI03 2:11
29	2	2	W	East facing section of trench showing stones	CRI03 2:12-13
30	1	1	E	West facing section of trench showing stones	CRI03 2:14
31	1	1	N	Section of culvert during removal at 10 m	CRI03 2:15
32	2	2	W	East facing section showing wall of culvert at 14.5 m	CRI03 2:16-17
33	1	1	N	Section through culvert while digging at c 23m	CRI03 2:18
34	2	4		Top of culvert from 30 m, moving North	CRI03 2:19-20
35	1	0	N	Along capstones in culvert	CRI03 3:1
36	14	0	Vertical	Progression of shots along trench showing capstones, 0 - 32m	CRI03 3:2-12
37	6	0	SW	Showing south-west artery to main culvert	CRI03 3:13-16
38	16	16	N	Progression of shots along trench showing capstones	CRI03 4a:2-17
39	8	8	Vertical	Overlapping shots of side of culvert in section, 29 m - 37 m	CRI03 4a:18-25
40	2	2	E	Culvert [014]	CRI03 4:2-3
41	21	20	Vertical	Progression of shots showing culvert south-north	CRI03 4:4-24
42	24	23	Vertical	Progression of shots along culvert, south-north	CRI03 5:1-24
43	9	9	Vertical	Progression of shots along culvert	CRI03 6:1-8
44	3	3	-	Work in progress	CRI03 6:9-12
45	1	1	NE	Kink in trench	CRI03 6:13
46	1	1	NW	Shot along from kink	CRI03 6:14

1.6 Photographic Register

No.	CP	CS	Direction Facing	Description	Field label
47	1	0	NW	Work in progress	CRI03 6:15
48	35	0	S	Progression of shots along Tr1, east to west	MHS03 1:2-36
49	0	31	S	Progression of shots along Tr1, west to east	MHS03 1:2-32
50	0	3	W	Trench 1 backfilled	MHS03 1:33-35
51	1	1	E	Water filling Tr 2	MHS03 2:2
52	1	1	S	Sample section	MHS03 2:3
53	2	2	S	Sample section with 1m scale (vertical)	MHS03 2:4-5
54	1	1	N	Section at west end of Tr1 with trowel scale	MHS03 2:6
55	1	1	E	Working Shot	MHS03 2:7
56	1	1	W	Working Shot	MHS03 2:8
57	1	1	S	North facing section	MHS03 3:1
58	1	1	S	North facing section	MHS03 3:2
59	1	1	NE	Tr 3 showing pipes	MHS03 3:3
60	1	1	W	TR 4	MHS03 3:4
61	1	1	E	Working Shot	MHS03 3:5
62	1	1	S	Sample section at 0 m	MHS03 3:6
63	1	1	SE	North facing section with pipe	MHS03 3:7
64	1	1	W	Working Shot	MHS03 3:8
65	1	1	SW	North facing section at 10 m	MHS03 3:9
66	1	1	S	North facing section at 20 m	MHS03 3:10
67	1	1	N	Possible pit deposits	MHS03 3:11
68	1	1	NW	Working Shot	MHS03 3:12
69	1	1	S	Possible pit at 43m	MHS03 3:13
70	1	1	W	Working Shot	MHS03 3:14
71	2	0	W	East facing section with bone	MHS03 3:15
72	1	1	NW	Midden deposit	MHS03 3:16
73	1	1	SE	Section showing sand silts and clays	MHS03 3:17
74	1	1	W	Working Shot	MHS03 3:18
75	1	1	S	Section through [30/030] - pit or ditch	MHS03 3:19
76	1	1	E	Tr 30 after burst pipe	MHS03 3:20
77	1	2	S	Shell layer [36/036]	MHS03 3:21
78	1	1	E	Working Shot	MHS03 4:2
79	1	1	S	Tr 39 at 10 m from west end	MHS03 4:3
80	1	1	S	Tr 39 at 20 m from west end	MHS03 4:4
81	1	1	S	Tr 39 at 30 m from west end	MHS03 4:5
82	1	1	-	Working shot on James Street	MHS03 4:6
83	1	1	-	Working shot on Balcarres Place	MHS03 4:7
84	1	1	W	East facing section on High Street	MHS03 4:8
85	1	1	W	Rubble layer and ditch [68/011], at 40 m	MHS03 4:9
86	1	1	W	Tr 68 at 50 m	MHS03 4:10
87	1	1	W	[68/002] and [68/004], south end of trench	MHS03 4:11
88	1	1	W	Pit [69/004]	MHS03 4:12
89	1	1	W	Tr 69 at 5.5 m, [69/006], china and possible wall	MHS03 4:13
90	1	1	NE	SE facing section of pit [113/007]	MHS03 4:14
91	1	1	E	West facing section of [128/006]	MHS03 4:15
92	2	2	NW	Sandstone culvert in base of trench	MHS04 4:16-17

1.6 Photographic Register

No.	CP	CS	Direction Facing	Description	Field label
93	1	1	N	Cobbles [150/003]	MHS03 4:18
94	1	1	S	Cobbles [150/003] with scale	MHS03 4:19
95	1	1	E	Working Shot	MHS03 4:20
96	1	1	N	[169/006] - closeup	MHS03 4:21
97	1	1	N	[169/006]	MHS03 4:22
98	1	1	W	Top of culvert [174/006]	MHS03 4:23
99	1	1	?	Top of culvert [174/006] with scale	MHS03 4:24
100	1	0	N	Trench section	MHS03 4:25
101	1	1	W	East facing section	MHS03 5:1
102	1	1	E	Context [186/007]	MHS03 5:2
103	1	1	E	Contexts [186/001, 006, 007, 008, 009, 004, 010]	MHS03 5:3
104	1	1	S	Trial in Inveresk Brae	MHS03 5:4
105	1	1	N	Trial in Inveresk Brae	MHS03 5:5
106	1	1	N	Trial in Inveresk Brae	MHS03 5:6
107	2	1	W	Tr 199, east facing section at north end	MHS03 5:8-9
108	1	1	W	Contexts [200/003, 007] tapering up to south	MHS03 5:10
109	1	1	E	West facing section of [200/006], north part	MHS03 5:11
110	1	1	E	West facing section of [200/006], north part	MHS03 5:12
111	1	1	E	West facing section of [200/006], south part	MHS03 5:13
112	1	1	E	[200/006], general shot	MHS03 5:14
113	1	1	E	West facing section of [200/007-010] - north part	MHS03 5:15
114	1	1	E	West facing section of [200/007-010] - south part	MHS03 5:16
115	1	1	?	Unknown section	MHS03 5:?
116	1	1	S?	Ceramic pipe and wall	MHS03 5:17
117	1	1	N?	Ceramic pipe and wall	MHS03 5:18
118	1	1	?	Unknown section, opposite to 115	MHS03 5:?
119	1	1	?	Unknown section	MHS03 5:?
120	1	1	W	Tr 200 at 45 m, collapse and service pipes	MHS03 5:19
121	1	1	?	Culvert [200/018]	MHS03 5:21
122	1	1	?	Culvert [200/018], excavated	MHS03 5:22
123	1	1	Vertical	Excavated interior of culvert [200/018]	MHS03 6:1
124	2	2	S	Base of culvert [200/018]	MHS03 6:2-3
125	1	1	W	Section of [200/019] + [200/021] at 70.5 m	MHS03 6:5
126	1	1	W	Working Shot	MHS03 6:6
127	2	1	E	Working Shot	MHS03 6:7
128	1	1	N	Walled up openings in wall of Inveresk Village Road	MHS03 6:8
129	1	0	E	Rubble feature [227/002] + [227/003]	MHS03 7:2
130	1	0	W	Rubble feature [228/002] + [228/003]	MHS03 7:3
131	1	1	N	Cobbled surface [241/003]	MHS03 7:4
132	1	1	N	Working shot, Inveresk Brae	MHS03 7:5
133	1	1	E	Sample section, Inveresk Brae	MHS03 7:6
134	1	1	E	Sample section, Inveresk Brae	MHS03 7:7
135	1	1	N	Working Shot	MHS03 7:?
136	1	1	N	View of completed strip, Inveresk Brae	MHS03 7:8
137	1	1	NW	Side wall of mill-lade [264/004]	MHS03 7:9
138	1	1	SE	Side wall of mill-lade [264/004]	MHS03 7:10

1.6 Photographic Register

No.	CP	CS	Direction Facing	Description	Field label
139	1	1	SW	Close up of mill-lade arch [264/006]	MHS03 7:11
140	1	1	S	Interior of mill-lade [264/006]	MHS03 7:12
141	1	1	SW	Mill-lade arch [264/006]	MHS03 7:13
142	1	1	NE	Damage to NE section of mill-lade [264/006]	MHS03 7:14
143	1	1	N	Overview of wall [271/003]	MHS03 7:15
144	2	2	E	Plan view of wall [271/003]	MHS03 7:16-17
145	1	1	W	Plan view of wall [271/003] - shows coursing	MHS03 7:18
146	1	1	W	[272/004]	MHS03 7:19
147	1	1	W	Section through [271/003]	MHS03 7:21
148	1	1	E	Section through [271/003]	MHS03 7:22
149	1	1	N	Mortar spread	MHS03 7:23
150	1	1	E	Deposits in section at 22m	MHS03 7:24
151	1	1	S	Working shot, Inveresk Brae	MHS03 7:25
152	0	1	-	Working shot, Inveresk Brae	MHS03 7:26
153	0	1	-	Working shot, Inveresk Brae	MHS03 7:27
154	0	1	-	Working shot, Inveresk Brae	MHS03 7:28
155	0	1	-	Working shot, Car park	MHS03 7:29
156	0	1	-	Working shot, Car park	MHS03 7:30
157	1	1	NW	Buried sleeper in Tr 308	MHS03 8:2
158	1	1	SE	Deposits in section	MHS03 8:3
159	1	1	S	Sandstone blocks	MHS03 8:4
160	1	1	E	Deposits in section at 37 m from west end of Tr 384	MHS03 8:5
161	1	1	SE	Culvert [399/004] in section	MHS03 8:6
162	1	1	W	Brick structure in Tr 433	MHS03 8:7
163	1	1	N	Sandstone wall (?) in Tr 451	MHS03 8:8
164	1	1	E	Sandstone wall (?) [481/004]	MHS03 8:9
165	1	1	NE	Sandstone wall (?) [481/004]	MHS03 8:10
166	1	1	N	Sandstone culvert [485/006]	MHS03 8:11
167	1	1	NW	Sandstone culvert [485/006]	MHS03 8:12
168	1	1	N	Sandstone culvert [485/006] + blocks [485/008]	MHS03 8:13
169	1	1	NW	Sandstone blocks [485/008]	MHS03 8:14
170	1	1	N	Working Shot, Carberry Road	MHS03 8:?
171	1	1	N	Sandstone culvert 586/007]	MHS03 8:15
172	1	1	W	Sandstone culvert [613/003]	MHS03 8:16
173	1	1	E	Roadside wall, Carberry Road	MHS03 8:17
174	1		W	Culvert [613/003] in section	MHS03 8:18
175	1		S	Culvert [613/003] during removal	MHS03 8:19
176	1		S	Working shot	MHS03 8:20
177	1	1	N	Possible pit	MHS03 9:3
178	1	1	SW	Stones in section	MHS03 9:4

1.7 Finds register

TILE

Trench no	Context no	Sample no	Comments	No. of fragments
199	007	-		2
200	014	-		4
200	014	-	Dep. 0.85-6 metres from the north end	2
699	009	-		1
200	007	004	Retent	1
039	039	003	Retent	1

STONE

Trench no	Context no	Sample no	Comments	No. of fragments
733	007	-		1

MORTAR

Trench no	Context no	Sample no	Comments	No. of fragments
733	007	-		1
481	004	-		
599	004	008	Retent	
200	007	004	Retent	
659	007	009	Retent	
733	007	011	Retent	
200	019	006	Retent	
006	022	001	Retent	
757	006	013	Retent	
757	008	014	Retent	
762	002	015	Retent	
763	002	016	Retent	

POTTERY

Trench no	Context no	Sample no	Comments	No. of fragments
002	006	-	-	1
039	039	-		5
069	005	-		1
070	004	-	From midden layer	1
109	003	-		1
200	005	-		2
485	007	-		1
586	006	-	From fill of culvert	1
659	005	-		5
659	007	-		4
699	009	-	From midden layer	1
699	009	-		5
733	003	-		2
771	-	-	From disturbed deposits	3
791	-	-	From mixed deposits	2
848	010	-		2

030	029	002	Retent	2
039	039	003	Retent	2
485	007	007	Retent	1
599	004	008	Retent	1
659	007	009	Retent	1
699	012	010	Retent	6
757	005	012	Retent-Slipware	2
757	006	013	Retent	1
757	008	014	Retent - mixed	>20
762	002	015	Retent - mixed	8
763	002	016	Retent - mixed	8
757	0	-	Mixed	13
BRICK				
Trench no	Context no	Sample no	Comments	No. of fragments
757	005	012	Retent - Red fired	2
757	008	014	Retent - Red fired	1
CLAY PIPE				
Trench no	Context no	Sample no	Comments	No. of fragments
002	004	-	-	1
586	006	-	From fill of culvert	2
GLASS				
Trench no	Context no	Sample no	Comments	No. of fragments
220	002	-		1
586	006	-	From fill of culvert	2
699	009	-		1
848	010	-	-	1
200	007	004	Retent	4
599	004	008	Retent	1
659	007	009	Retent	2
699	012	010	Retent	1
733	007	011	Retent	1
SLAG				
Trench no	Context no	Sample no	Comments	No. of fragments
006	022	001	Retent	
030	029	002	Retent	
200	019	006	Retent	
485	007	007	Retent	
599	004	008	Retent	
659	007	009	Retent	
699	012	010	Retent	
733	007	011	Retent	
757	006	013	Retent	4
Fe OBJECTS				
Trench no	Context no	Sample no	Comments	No. of fragments
539	005	-		1

039	039	003	Retent	1
757	006	013	Retent	2
757	008	014	Retent -Fe nail	1
763	002	016	Retent	3
SHELL MARINE				
Trench no	Context no	Sample no	Comments	No. of fragments
586	006	-	From the fill of a culvert	2
006	022	001	Retent	5
039	039	003	Retent - Mixed shell	
599	004	008	Retent - Mixed shell	
699	012	010	Retent - Mixed shell	
733	007	011	Retent	1
757	005	012	Retent - Oyster	1
757	008	014	Retent - Oyster	3
762	002	015	Retent - Oyster, Mussel	2
763	002	016	Retent - Mixed	6
SHELL LAND				
Trench no	Context no	Sample no	Comments	No. of fragments
762	002	015	retents	1
BONE MIXED				
Trench no	Context no	Sample no	Comments	No. of fragments
757	-	-	Mammal	8
006	022	-	Mammal	6
699	009	-	Mammal	5
599	004	-	Mammal	2
006	022	-	Mammal	1
199	007	-	Mammal	1
659	007	-	Mammal	6
113	005	-	Mammal	1
111	004	-	Mammal	1
006	022	001	Retent mammal bone	
030	029	002	Retent mammal bone	
200	007	004	Retent mammal bone	
200	005	005	Retent mammal bone	
039	039	003	Retent mammal bone	
599	004	008	Retent mammal bone	
659	007	009	Retent mammal bone	
699	012	010	Retent mammal bone	

757	005	012	Retent mammal bone	
757	008	014	Retent mammal bone	
762	002	015	Retent mammal bone	
763	002	016	Retent mammal bone	
485	007	007	Retent burnt bone	
699	012	010	Retent burnt bone	
733	007	011	Retent burnt bone	
757	005	012	Retent burnt bone	
757	008	014	Retent burnt bone	
762	002	015	Retent burnt bone	
030	029	002	Retent fishbone	
599	004	008	Retent fishbone	
659	007	009	Retent fishbone	
762	002	015	Retent fishbone	

1.8 Sample register

Sample No	Trench No/Context No	Description
1	006/022	Dark grey sandy silt with animal bone
2	030/029	Dark grey sandy silt with charcoal
3	039/039	Shell midden
4	200/007	Fill of ditch [200/006]
5	200/005	Fill of ditch [200/012]
6	200/019	Fill of culvert [200/018]
7	485/007	Fill of culvert [485/006]
8	599/004	Fill of ditch [599/005]
9	659/007	Midden deposit
10	699/012	Fill of cut feature [699/011]
11	733/007	Burnt rubble deposit
12	757/005	Midden deposit
13	757/006	Midden deposit
14	757/008	Midden deposit
15	762/002	Midden deposit
16	763/002	Midden deposit
17	842/002	Midden deposit

APPENDIX 2: Assessment of samples

SITE CODE	MHS03	SITE NAME	Musselburgh High Street
AUTHOR	Rosalind Gillis		

SAMPLING STRATEGY

Bulk soil samples (10 litre in size), for the recovery of small finds and palaeoenvironmental remains, were taken from 17 deposits at five locations throughout Musselburgh; from trenches on the High Street, Inveresk Brae, North High Street, Bridge Street and Eskside West.

METHODOLOGY

Each sample was subjected to a system of flotation in a Siraf style flotation tank. The floating debris (flot) was collected in a 250 μ m sieve and, once dry, scanned using a binocular microscope. Any material remaining in the flotation tank (flot) was wet-sieved through a 1mm mesh and air-dried. This was then sorted and any material of archaeological significance removed.

No of samples	17
----------------------	----

RESULTS

The results are summarised in Tables 1 and 2.

Pottery

Fragments of white gritty and green glaze pottery were recovered from T030/029 and T039/039 and date from the 12th to 15th century. The remaining pottery sherds recovered were post-medieval in date.

Tile

Small fragments of floor tile were recovered from T039/039, T200/007 and T599/004.

Glass

Small fragments of glass were recovered from T659/007 and T699/012, which are probably post-medieval in date.

Metal

Two iron nails were recovered from T757/008 and T039/039. In addition, fragments of iron were recovered from T763/002 and T757/006.

Metalworking debris

Small quantities of ferrous slag were recovered from T006/022 and T842/002. Non-ferrous slag was also recovered from T030/029, T200/019, T659/007, T200/019, T733/007, T599/004 and T757/005.

Building material

Fragments of lime mortar were recovered from the majority of samples.

Bone

Both unburnt and burnt large mammal bone was recovered from a number of deposits. In addition, small quantities of fish bone were recovered from five contexts. The low level of fish bone is perhaps surprising due to the close proximity of estuarine and marine resources.

Shell

Small quantities of marine shell were recovered from the majority of the samples and consisted of limpet, mussel, oyster and winkle shells. Large quantities of marine shell were recovered from T006/022, T039/039 and T762/002 and these deposits have been identified as shell midden.

Coal/Cinders

Coal and cinders were recovered from the majority of the samples; one high concentration of unburnt coal was recovered from a post-medieval context (T757/006). The coal and cinders were not retained for further analysis.

Charred plant remains

Only limited charred plants remains were recovered from the samples, which may be due to preservation conditions. Oats (*Avena* sp.) and Barley (*Hordeum* sp.) were the predominant cereals. Occasional weeds of Chenopodiaceae indet (fat hen) were recovered; this wild species is associated with both cultivated and waste ground.

Charcoal

One piece of charcoal was recovered from T757/008 and has AMS dating potential. The scarcity of charcoal remains is probably due to the exploitation of additional fuel resources such as coal.

DISCUSSION

The quantity of finds and palaeoenvironmental remains recovered was low. The majority of samples contained a mixture of both domestic and industrial debris including pottery, animal bone, marine shell and occasional charred cereal grains.

The pottery spot dates suggest that the deposits vary in age, ranging from medieval (T030/029, T039/039 & T659/007) to post-medieval (T485/007, T599/004, T757/005, T757/006, T757/008, T762/002 & T763/003).

The fill of ditch T200/006 could be interpreted as Roman in origin, given the nature of the artefacts collected from the deposit by hand (See finds report: Appendix 3). Coal/cinders were also recovered from the ditch fills (T200/005 & T200/007) and this may suggest that the deposits have been re-worked at a later date. AMS dating of the animal bone recovered from these two ditch fills could clarify the date of this feature.

RECOMMENDATIONS

- ◆ AMS dating of animal bone (if taphanometrically secure) from ditch deposits T200/005 and T200/007, to clarify chronology of potential Roman ditch.
 - ◆ Further analysis of the material recovered would give little additional information to that gained above. A summary of method and results should be added to any final/publication report
-

Trench no	Context no	Sample no	Context description	Pottery	Tile	Glass	Metal	Metal working debris	Building material	Bone burnt	Bone unburnt	Fish bone	Marine shell	Coal	Cinders	Charcoal		Comment
																Qty	AMS	
006	022	001	Dark grey sandy silt					++	+++		+++		+++					Mortar
030	029	002	Fill of pit/ditch [030],	+				+		++++	++++	++		+	+++			
039	039	003	Shell midden	+	+		+					+	++++	+	++			Iron nail
200	007	004	Fill of ditch [006]		+	+			++++		+			++	++			Mortar
200	005	005	Fill of ditch [006]							++	++			+++	+++			
200	019	006	Fill of culvert [018]					++	+++									Mortar
485	019	007	Fill of culvert [006]	+				+		+								
599	004	008	Fill of ditch [005]	+	+			+	++	+++	+++	+	++					Mortar
659	007	009	Garden soil/midden layer.	+		+		+	+	++	++	+	+					Mortar
699	012	010	Fill of ditch/pit [011]	++		+		+++		++	++		+		+			
733	007	011	Rubble deposit	+				+	+	+			+		+++			Mortar
757	005	012	Midden deposit	+					+	+	+			+	+			Brick
757	006	013	Midden deposit	+			+	+	++					++++	++++			2 pieces of Fe Mortar
757	008	014	Midden deposit	+++			+		+	+++			++	+	++	+	*	Fe nail Mortar Brick
762	002	015	Midden deposit	++					+++		+++	+	+++		+++			Mortar
763	002	016	Midden deposit	++			+		+++	+++	+++		++	+	++			3 pieces of Fe nail Mortar
842	002	017	Sand deposit	+				+	++				++					

Table 1. Composition of retents

Key: + = rare, ++ = occasional, +++ = common and ++++ = abundant, * = sufficient charcoal for AMS dating

Trench no	Context no	Sample no	Total flot vol (ml)	Context description	Cereal grain	Weed seeds	Metal working debris	Bone unburnt	Land snail	Marine shell	Charcoal	Coal	Cinders	Comment
006	022	001	20	Dark grey sandy silt.							+		++	
030	029	002	20	Fill of pit/ ditch [030]	+++	+		+			+	+	++	Oat +++ Barley +++ Rye + Chenopodiaceae indet +
039	039	003	15	Shell midden	+++					+		+	++	cf Oat ++ cf Barley +++
200	007	004	<10	Fill of ditch [006]					+		+			
200	005	005	20	Fill of ditch [006]	+						+	+	++	Oat + Barley +
200	019	006	<10	Fill of culvert [018]	+					+			+	cf Oat + cf Barley ++
485	007	007	40	Fill of culvert [006]	++	+			+		+	+	+++	Barley + Chenopodiaceae indet +
599	004	008	20	Fill of ditch [005]								+	++	
659	007	009	20	Garden soil/midden layer								+	++	
699	012	010	20	Fill of ditch/pit [011]									+++	
733	007	011	100	Rubble deposit			+						++++	Slag
757	005	012	25	Midden deposit						+	+		+++	
757	006	013	<10	Midden deposit	+						+		++	Oat +
757	008	014	10	Midden deposit	+						+		++	Barley +
762	002	015	10	Midden deposit						+	+		++	
763	003	016	<10	Midden deposit						+	+		+	
842	002	017	<10	Sand deposit	+								++	

Table 2. Composition of flots

Key: + = rare, ++ = occasional, +++ = common and ++++ = abundant

APPENDIX 3: Finds Assessment**Julie Franklin****The Material**

The assemblage consists of 95 sherds of pottery, the majority of which are post-medieval, spanning the 17th to 19th or 20th centuries. These include imported sherds of German stoneware, Delft and Slipware, showing some degree of affluence or foreign trade in Musselburgh at the time. The pottery is accompanied by a few sherds of pan tile, bottle glass and clay pipe.

Older material – of Roman and medieval date – is also present. Medieval finds are limited to 11 sherds of White Gritty ware. These were found in Trenches 30 and 39, on the High Street, and in the more mixed Trench 659 on Bridge Street.

Roman finds consist of a rim sherd from a Samian vessel, with associated glass fragments, and sherds of hypocaust tile and possibly brick. These were from Trench 200 and Trench 199. These trenches do not contain any later material, although the glass and smaller fragments of ceramic building material are largely undatable.

Summary of Dating Evidence

Trench	Context	Dating
2	004	Late 18 th /19 th century clay pipe stem
2	006	18 th /19 th century pot sherd
30	029	12 th /14 th century pottery sherds
39	039	14 th /15 th century pottery with Post-Medieval roof tile
69	005	15 th /16 th century pot sherd
70	004	16 th /18 th century stoneware sherd
109	003	16 th /18 th century pot sherd
199	007	Brick/tile sherds, possibly Roman
200	-	Roman? Large pieces of possible hypocaust box flue tile
200	005	Roman - Samian sherd and piece of tile
200	007	Glass and tile fragments, possibly Roman?
200	003	Roman, large pieces of tile, including combed box flue tile
220	002	18 th /20 th century bottle sherd
485	007	17 th /18 th century pot sherds
586	006	19 th /20 th century clay pipe and bottle sherds
599	004	16 th /17 th century pottery and window fragments
659	005	17 th -18 th century pottery
659	007	18 th /19 th century bottle glass and pottery with residual Medieval
699	009	17 th /18 th century pottery, bottle glass and tile
699	012	17 th /18 th century, possibly later pottery and glass fragments
733	003	17 th /18 th century pottery
733	007	Window sherd, probably 18 th /20 th
757	-	17 th -18 th century, pottery, bottle glass, tile
757	005	17 th /18 th century pot sherds
757	006	18 th or later
757	008	18 th century pottery
762	002	17 th /18 th century pottery
763	002	17 th /e.18 th century pottery
771	-	17 th /18 th century pot sherds, including imported Delft
791	-	18 th /19 th century pot sherds
842	002	18 th /19 th century pot sherd
848	010	18 th /19 th century pottery and bottle glass

Recommendations for Further Work

The small sherd size and general late date of the assemblage limits its potential. The medieval and early post-medieval sherds, particularly the imported sherds may be worthy of a note in a publication report. The Roman finds are more interesting. A short report on the tile is recommended, with comparisons particularly to excavated material from Inveresk and Cramond. The Samian sherd is very small but may be worth sending to a specialist.

Conservation

None of the finds is in need of conservation work.

Illustration

The general small sherd size and common and generally late types of pottery mean that only the Samian rim sherd (Trench 200, Context 005) is possibly worth illustrating.

List of Pottery with Spot Dates

Trench	Context	Sample	Fabric	Qty	Ri	H	Ba	Bo	Description	Spot Date
2	006		ModRE	1			1		Brown glazed	18 th /19 th
30	029	2	WG	2				2	Sooty sherds	12 th /14 th
39	039		WG	5		1		4	Olive glaze or orange heat skin, thumbbed terminal, same jug?	14 th /15 th
39	039	3	WG	2				2	Green glaze, same jug as other (039), joining	14 th /15 th
69	005		PMR	1				1	Jug sherd	15 th /16 th
70	004		?RhenS W	1				1	mid grey fabric, thick mottled salt glaze, incised decoration?	16 th /18 th
109	003		?PMO	1				1	Smooth red earthenware, orange glaze, poor condition	16 th /18 th
200	005		Samian	1	1				Cup or bowl rim	Roman
485	007		PMR	1		1			Strap handle	17 th /e.18 th
485	007	7	ModWE	1				1	Fragment, possibly WSG	18 th /20 th
586	006		ModWE	1	1		1		Saucer, moulded, plain	19 th /20 th
599	004	8	PMO	1				1	Fragment, orange glazed	16 th /18 th
659	005		PMO	3	3				Jar rims	17 th /e.18 th
659	005		ModRE	1				1	Brown glazed	18 th /19 th
659	005		ModWE	1			1		Creamware?	18 th /19 th
659	007		WG?	1				1	Fragment, olive glazed	13 th /15 th
659	007		ModRE	3				3	Brown glazed	18 th /19 th
659	007	9	WG	1				1	Unglazed	12 th /15 th
699	009		PMO/R	3	1	1		1	Various	17 th /e.18 th
699	009		ModRE	2			1	1	Slip decorated, relatively coarse	16 th /18 th
699	009		PMO	1		1			Thumbbed terminal	17 th /e.18 th
699	012	10	PMO	3			1	2	Very small	17 th /e.18 th
699	012	10	ModWE	3				3	Bright yellow glaze, plus two tiny fragments	19 th /20 th
733	003		ModRE	2				2	Slip lined, decorated	17 th /18 th
757			PMO	1	1				Dish rim	17 th /e.18 th
757			ModRE	6		1	1	4	Slip lined, brown glazed, slip decorated	17 th /19 th

Trench	Context	Sample	Fabric	Qty	Ri	H	Ba	Bo	Description	Spot Date
757			WSG	1	1				Upright rim	18 th
757			ModWE	4	1		1	2	Creamware, moulded plate rim	18 th
757	005	12	ModRE	2			1	1	Brown glazed, slip trailed	17 th /18 th
757	008	14	ModRE	14			2	12	Brown glazed, same vessel?	17 th /19 th
757	008	14	WSG	1	1				Moulded dish rim	18 th
762	002	15	PMO/R	4				4	Some joins	17 th /e.18 th
762	002	15	Slipware	4				4	Slip trailed decoration, 3 joining from same vessel	17 th /18 th
763	002	16	PMO	8	2		1	5	Various fragments and jar rims	17 th /e.18 th
771	Eskside West		TGE	1				1	Cream fabric, tin glazed with hand painted blue line, flaking	17 th /18 th
771	Eskside West		ModRE	2			1	1	Slip lined, mottled, one with orange brown glaze, possibly LCRW??	17 th /19 th
791	Hercus Loan		ModRE	1			1		Brown glazed	18 th /19 th
791	Hercus Loan		ModWE	1				1	Creamware?	18 th
842	002	17	ModRE	1				1	Slip lined and brown glazed fragments	18 th /19 th
848	010		ModRE	1				1	Brown glazed	18 th /19 th
848	010		ModWE	1	1				Buff fabric, dull yellow glaze with ?slip trailed white lines	18 th

Abbreviations: ModRE=Modern Red Earthenware; ModWE=Modern White Earthenware; PMO/PMR=Post-Medieval Reduced/Oxidised; RhenSW=Rhenish Stoneware; TGE=Tin Glazed Earthenware; WG=White Gritty; WSG=Modern White Salt Glazed Stoneware

List of Tile, Glass and Metal finds with Spot Dates

Trench	Context	Sample	Material	Qty	Description	Spot Date
2	004		Clay Pipe	1	Narrow stem	L.18 th /19 th
39	039	3	CBM	1	Roof tile, sandy surface	17 th /20 th
39	039	3	Fe	1	Nail, small	
199	007		CBM	2	Very large dense piece of ?brick, and smaller fragment	Roman?
200	-		CBM	4	Thick dense tile, large sherds, c.25mm thick, one with corner, possibly box flue tile?	Roman
200	005		CBM	1	Small piece of tile	Roman?
200	007	4	CBM	1	Tile sherd, flat surface	Roman?
200	007	4	Glass	4	Fragments of very fine clear glass, slightly laminating. Window or vessel?	Possibly Roman
200	003		CBM	1	Hypocaust box flue tile. Tile, roughly flat, 18mm thick, combed marks on one side.	Roman
200	003		CBM	1	Thick tile with groove and ridge along edge, 32mm thick	Roman?

Trench	Context	Sample	Material	Qty	Description	Spot Date
220	002		Glass	1	Green bottle sherds, good condition	18 th /20 th
539	005		Fe	1	Nail, large	
586	006		Clay Pipe	2	Stem & bowl sherd	L.18 th /19 th
586	006		Glass	2	Clear bottle sherds	18 th /20 th
599	004	8	Glass	1	Clear fine ?window fragment, badly laminating	
659	007	9	Glass	2	Fine green bottle sherds	
699	009		CBM	1	Roof tile, sandy surface	17 th /20 th
699	009		Glass	1	Green bottle base, badly laminating	18 th /e.19 th
699	012	10	Glass	1	Green fragment	
733	007	11	Glass	1	Clear ?window sherd, good condition	17 th /20 th
757			CBM	1	Roof tile, sandy surface	17 th /20 th
757			Fe	1	Nail, small	
757			Glass	1	Green bottle sherd, laminating	
757	006	13	Slag	1	With fragment of glass or bunt earthenware	
757	008	14	Fe	1	Nail, small	
763	002	16	Fe	3	Nail and two fragments	
848	010		Glass	1	Blue-green bottle base fragment	19 th /20 th