



CFA ARCHAEOLOGY

Professional cultural heritage consultants - branches nationwide
enquiries@cfa-archaeology.co.uk



Minor Archaeological Services Call-off Contract East Range, Stanley Mills, Stanley, Perth & Kinross (PIC043)

Historic Building Survey, April and May 2022
Report No. HES-PIC043-2022-01

Author(s):
Graeme Carruthers MA MCIfA



CFA ARCHAEOLOGY LTD

The Old Engine House
Eskmills Business Park
Musselburgh
East Lothian
EH21 7PQ

Tel: 0131 273 4380
Fax: 0131 273 4381
email: info@cfa-arch.co.uk
web: www.cfa-archaeology.co.uk

Author	Graeme Carruthers MA MCIfA
Illustrator	Sam Griffith BA MSc PhD
Approver	Bruce Glendinning BSc PgDip MCIfA
Commissioned by	Historic Environment Scotland
Date issued	September 2022
Version	2
OASIS Reference	cfaarcha1-437611
Planning Application No	21/02111/LBC
Grid Ref	NO 11473 32800
CFA Report No.	4189
HES Report No.	HES- PIC043-2022-01

This document has been prepared in accordance with CFA Archaeology Ltd standard operating procedures.

Minor Archaeological Services Call-Off Contract

**East Range, Stanley Mills,
Stanley, Perth & Kinross (PIC043)**

Historic Building Survey, April and May 2022

Report No. HES-PIC043-2022-01

CONTENTS

1.	Introduction	4
2.	Methodology	4
3.	Desk-based Assessment Results	6
4.	Building Survey Results	6
5.	Discussion	17
6.	Conclusion	17
7.	References	18

APPENDICES

1.	Photograph Register	19
2.	Discovery & Excavation in Scotland Entry	22

FIGURES

Fig 1	Site location plan
Fig 2	Site plan with Units and photograph locations
Fig 3	Map regression
Fig 4	Site phasing plans and elevations with feature numbers
Fig 5	Phase 1, external west-facing elevation
Fig 6	Phase 1, detail of reused lintel on doorway (029)
Fig 7	Phase 1, blocked doorway (031) and window (033)
Fig 8	Phase 1, internal north-facing elevation of Unit 1
Fig 9	Phase 1, internal east-facing elevation of Unit 2
Fig 10	Phase 2 remains of raggle line of missing building and blocked windows (003) and (007)
Fig 11	Phase 3 external east-facing elevation
Fig 12	Phase 3 line of internal columns supporting roof when Phase 3 removed eastern wall of Unit 2
Fig 13	Phase 3, internal north-facing elevation showing support bracket (057) and flywheel (058)
Fig 14	Phase 3, detail of support bracket (057) and flywheel (058)
Fig 15	Phase 3, detail of maker's name on flywheel (058)

- Fig 16 Phase 3, internal east-facing elevation showing doorway (017) and window (018)
- Fig 17 Phase 4 external west-facing elevation, Unit 3, showing window (038) and doorway (039) both blocked in Phase 5
- Fig 18 Phase 4 Unit 2/3, remains of brick support column (053) for roof support I beam
- Fig 19 Phase 4 Unit 2/3, remains of brick support column (054) for roof support I beam
- Fig 20 Phase 5, Garage, Unit 6, external south-facing elevation
- Fig 21 Phase 5, Garage, Unit 6, external west-facing elevation
- Fig 22 Phase 5, Garage, Unit 6, external north-facing elevation with double door (072).
- Fig 23 Phase 5, Garage, Unit 6, vehicle inspection pit
- Fig 24 Phase 5 toilet, Unit 7 next to Garage
- Fig 25 Phase 6 external west-facing elevation, Unit 4, showing doorway (042)
- Fig 26 Phase 6 external north-facing elevation, Unit 4, showing doorway (027)
- Fig 27 Phase 7 Unit 5, external east and north-facing elevations showing damage caused by vandalism and raggle line for sloping corrugated roof
- Fig 28 Site post partial demolition
- Fig 29 Insurance map of site from 1911 with buildings functions labelled
- Fig 30 I beams salvaged from demolition
- Fig 31 The Phase 1 cast columns salvaged from the demolition of Unit 2
- Fig 32 Detail of the heads of the Phase 1 cast columns salvaged from the demolition of Unit 2
- Fig 33 The Phase 1 metal roof trusses salvaged from the demolition of Unit 2
- Fig 34 Detail of the Phase 1 metal roof trusses salvaged from the demolition of Unit 2 showing where they would have bolted onto a ridge beam

THUMBNAIL PRINTS (bound at rear)

1. INTRODUCTION

1.1 General

Listed Building Consent (Ref: 21/02111/LBC) has been granted to Historic Environment Scotland (HES) for the part demolition of the derelict Weaving Shed, Garage and ancillary buildings at the East Range of Stanley Mills, Stanley Mill Brae, Stanley, Perth & Kinross (Fig. 1, NGR: NO 11473 32800 centred), a Property in Care (PIC043) in the ownership of Historic Environment Scotland.

Perth and Kinross Heritage Trust (PKHT), archaeological advisers to Perth & Kinross Council, advised that they required an *Enhanced Level* Historic Building Survey of the structures to be part demolished to fulfil the planning condition.

In order to fulfil this requirement, a Written Scheme of Investigation (WSI) dated 29th March 2022 was prepared by CFA and accepted by PKHT. Work was undertaken under the terms of the Minor Archaeological Services Call-off Contract.

1.2 Aims and Objectives

The project's aims and objectives were to:

- Carry out an historic building survey of the exterior of the weaving sheds and East Range at Stanley Mills to an *Enhanced* level prior to any down takings and demolition works. For safety reasons the survey of the interior of the above buildings could only take place once the partially collapsed roof had been removed and the site was deemed safe to enter.
- Provide an illustrated Historic Building Report on the results of the survey.

2. METHODOLOGY

2.1 General

CFA followed the Chartered Institute for Archaeologists' Code of Conduct, Standards and Guidance as appropriate. Building recording followed the guidelines set out in ALGAO (2013) and established CFA methods. Table 1 sets out the survey requirements.

Table 1. List of survey requirements at Stanley Mills

Buildings	Drawings	Photographic
Weaving shed, Garage ancillary buildings	Marked-up floor plans and external elevations	General interior shots recording period architectural detail and general layout. General exterior shots and detailed recording of period architectural detail. Highlighted blocking work or intrusions if so required

2.2 Desk-based assessment

An examination of readily available desk-based sources, namely historical maps and information on listed buildings and secondary sources relevant to local vernacular building traditions, were examined. Further relevant documentary information was sought including the information held in the Historic Environment Scotland (HES) Canmore database.

2.3 Building Survey

Due to the derelict nature of the buildings the survey was undertaken in two phases.

The first phase recorded the external elevations and features prior to any demolition works. During this phase no access was allowed to the interiors of any of the buildings. Any observations concerning the interiors could only be made from looking through doorways or windows.

The second phase recorded the buildings' interiors after the removal of the unsafe roofing, after the cleaning out of any debris from within, and after the demolition of the brick-built buildings that formed Units 3, 4 and 5 (Fig. 28). Any observations about any of the roofs construction could only be made by examining any trusses or beams retaining after the demolition, (Figs. 30-34).

Photographic survey

CFA used a Nikon D300 camera to record the external and internal elevations and specific architectural features. Fig.2 shows the plan form of the buildings with photographic viewpoints. All the photographs are cross-referenced to the photographic register at the rear of this report (Appendix 1) and provided as a set of thumbnail prints (bound at the rear).

Metric Survey

The architectural drawings for the buildings were checked for accuracy and these were corrected and embellished as appropriate. Each unit was measured using a hand-held Leica distometer in order to correct the architectural plans. Pro forma building record forms were completed for the buildings using Unit numbers to describe the interior spaces within the complex.

3. DESK-BASED ASSESSMENT RESULTS

3.1 Cartographic

The First Edition 1865 Ordnance Survey 25-inch map (Fig 3a) shows the main Weaving Shed (Units 1 and 2) with a now missing building attached to the south gable (Fig. 3a).

The Second Edition 1894 Ordnance Survey 25-inch map shows no change to the site.

The Third Edition 1901 Ordnance Survey 25-inch map (Fig 3b) shows an extension to the Weaving Shed to the east (Phase 3, Unit 2, Fig 4a) and the first brick-built extension to the north (Phase 4, Unit 3, Fig. 4a). A small, now missing building, was added to the south-west corner of the Weaving Shed. The Garage (Phase 5, Unit 6 Fig, 4a) to the north is now also shown for the first time.

3.2 Bibliographic

HES Canmore On-Line database

Nearly all of the Stanley Mills complex is either A or B Listed; however, the Weaving Shed, Garage and ancillary buildings are not themselves listed. The CANMORE online database has no entry for the Weaving Shed, Garage and ancillary buildings.

Force and Fabric, Archaeological Investigations at Stanley Mills, Archaeology report No.5

The book discusses the history and development of the mill site but doesn't mention the buildings that form the subject of this report in any detail. Units 1-3 are however shown on an Insurance Map of the entire mill complex from 1911, p.88, and are labelled as 'Bleaching' and 'Drying' with an area to the immediate north that would later be Unit 4 labelled as 'Iron Wheel Store'.

4. BUILDING SURVEY RESULTS

4.1 General

The principal features of the buildings are described in Table 2 and shown in plan on Fig. 4a with the elevations on Fig. 4b-i along with the phasing. Photographic locations and the proposed downtakings are shown on Fig. 2.

4.2 Summary of Site Development

The Weaving Shed began as a rectangular single-storey building and is believed to have been constructed as part of the 1823-25 expansion to the Mill complex (Historic Environment Scotland Weaving Shed Assessment). The original part of the building was stone rubble-built and was built into the south-eastern corner of the Mill complex's eastern boundary wall (Phase 1, Unit 1).

Not long after construction, the Weaving Shed building was expanded to the south towards the river by a now missing building attached to the south gable (Phase 2); this can be seen on the 1856 Ordnance Survey map (Fig 3a).

On the 1901 Ordnance Survey map (Fig 3b), the Weaving Shed had been expanded through the Mill complex boundary wall to the east (Phase 3, Unit 2). A brick-built extension (Phase 4, Unit 3) was then added to the north of the original building.

The brick-built Garage (Phase 5, Unit 6) was constructed as a separate building to the north of the Weaving Shed, built within the north-eastern corner of the Mill complex boundary wall (Fig. 3b). Another brick-built extension was added to the northern end of the Weaving Shed's Phase 4 extension, creating Phase 6 (Unit 4), which became the final northern extent of the building. Built against the outside eastern face of the eastern boundary wall and attached to the northern end of the Phase 3 extension was a small brick-built lean-to (Phase 7, Unit 5).

4.3 Weaving Shed

4.3.1 External Elevations

North-facing Elevation (Fig. 4e)

This elevation contains the north-facing sides of Units 4 (Phase 6) and 5 (Phase 7).

Unit 4 was a brick-built extension on to the northern end of Unit 3, abutting the rubble-built eastern boundary wall (023) which formed its eastern side. The north-facing gable wall (026) contained an offset double doorway (027) with an iron I beam lintel (Fig. 26).

Unit 5 was a brick built (021) lean-to structure built utilising the rubble-built eastern boundary wall (023) to form its western side and was partially cut into the slope around the site. The north-facing brick wall of Unit 5 had a square window with a grill (075) and a doorway (074) with timber door. The northern wall was partially collapsed (Fig. 27).

East-facing elevation (Fig 4b)

This elevation consists of the eastern walls of Units 1 and 2 (Phases 1 and 3 respectively), Unit 5 (Phase 7) and the Phase 1 eastern boundary wall (023).

The eastern wall of Unit 1 comprises the eastern boundary wall (023) and is plain.

The eastern wall of Unit 2 is stone rubble built (016) and contains a door (017) with long and short quoins and a window to the north (018), also with long and short quoins and an iron grill (Fig. 11). An iron tie rod bar (019) runs along the length of the elevation, connecting to tie plate 020, and to tie plate 013 on the south-facing elevation. The wall of Unit 2 is set slightly forwards from Unit 5.

The eastern brick-built wall (021) of Unit 5 had been reduced in height. It had been built into the natural slope. Within Unit 5, I beams (022) were inserted with brick gables above to support the weight of the northern part of the adjacent Unit 2's roof. Unit 5 would have had a sloped corrugated roof; the remains of a raggie line (024) is visible on the boundary

wall (**023**) which forms the internal west wall of the structure and on the internal north-facing wall (Fig. 27). A single row of edge-on bricks (**025**) was visible on the wallhead of **023**, possibly to heighten or level the wallhead during a roof repair for Units 3 and 4 behind.

South-facing Elevation

The Ordnance Survey map of 1865 (Fig 3a) shows a now missing building attached to this southern end. This elevation contains the southern walls of Unit 1 (Phase 1) and Unit 2 (Phase 3).

The south-facing stone rubble built elevation of Unit 1 (**001**) formed part of the Mill complex's surrounding boundary wall (**023**), with long and short quoins on the eastern corner (**002**). Two blocked windows were set centrally (**003, 007**), one above the other, with a third small square window (**006**) offset between these windows. A timber baton (**005**) was fixed to the wall below the upper window (**003**). Areas of brickwork repair (**009, 010**) were visible on this gable end.

A raggle line (**004**) for the gable of the now missing building was visible, lower than but as wide as the gable for Unit 1 (Fig. 10). Windows (**003**) would likely have been blocked to facilitate the construction of the missing building, as the raggle line (**004**) cut across the window (**003**). Ten blocked floor joist holes were also present on this elevation to the west side, which must also relate to the now missing building.

The south-facing stone rubble built elevation of Unit 2 (**011**) contained a doorway (**012**) with long and short quoins on its eastern side and a wooden lintel. On the eastern edge of the elevation was a rectangular iron tie plate (**013**). Two small iron pipes (**014**) projected from the elevation.

West-facing Elevation (Fig. 4d)

This elevation contained Units 1 and 2 (Phase 1), Unit 3 (Phase 4) and Unit 4 (Phase 6) (Fig. 5). A small brick lean-to projecting from the southern end of the elevation had previously been demolished.

Unit 1 was a narrow structure which contained a wide single door (**029**) which had a large reused wooden lintel (Fig. 6). The gable roof was covered in grey slates; it had partially collapsed.

Unit 2 had long and short quoins at the corner (**036**) on the rubble-built elevation (**028**) and a decorative course of long, flat stones projecting from the wall head (**034**). Fenestration included two doorways (**031** and **035**) and two windows (**030** and **033**). Doorway (**031**) had its lower third blocked (**032**) and a sash window had been inserted above (Fig. 7). Doorway (**035**) was blocked by modern breeze blocks. Sash windows (**030**) and (**033**) had splayed reveals. The M-shaped gable roof was covered in grey slates and had long skylights running along its length; it had partially collapsed. A partially collapsed wooden gantry ran from the Weaving Mill to the west into the roof of Unit 2.

Units 3 and 4 were brick built, with Unit 3 butting onto the northern end of Unit 2 (**028**). The gable roof was covered in grey slates, it had partially collapsed and had skylights running along its length.

The Unit 3 elevation contained a door (**039**) and a window (**038**) (Fig. 17). These were later blocked by brickwork of a similar colour to that used in the construction of Unit 4.

The Unit 4 brick work (**041**) was different in both colour and size to Unit 3 (**037**) leading to an untidy join between the two phases on the western wall. The Unit 4 west-facing elevation contained a single doorway (**042**) with a concrete lintel (Fig. 25). The roof was covered in corrugated asbestos tiles and had skylights running along its length.

4.3.2 Internal Descriptions

Unit 1: Use unknown

Unit 1 was a long, thin structure on the southern end of the Weaving Shed with a brick built wall that separated Units 1 and 2; this brick wall was removed during the partial demolition process leaving a line of bricks flush with smooth concrete flooring on either side. The other internal rubble built wall faces were limewash-rendered.

The north-facing wall had three blocked windows (**003**, **006** and **007**) and a brick-built buttress (**046**) was built against it (Fig. 8). Also fitted on the north-facing wall was a metal electrical junction box with internal ceramic fittings and a metal swinging cover door which had a small, cast plate on its front saying 'GEC England'.

Unit 2: Weaving Shed

This Unit was now a large square room, but originally it would have been narrower with the original boundary wall forming its eastern wall. It was expanded to the east when the Phase 3 rubble built extension was added on to the building's eastern side, resulting in the removal of a section of the boundary wall (**023**). A row of iron columns ran down the centre of the original, narrower building. A second row of internal columns was added to support the eastern side of the roof in place of the removed eastern wall (Fig. 12); these columns were plainer than the earlier columns (Fig. 31-32).

The northern end of Unit 2 was open and led into Units 3 and 5; the southern side had previously been divided from Unit 1 by a brick wall which had been removed at the time of the survey. The floor was smooth concrete.

The east-facing wall had two rectangular windows, (**031** and **033**), and two doorways topped with low arches (**031** and **035**) (Fig. 9). Doorway (**031**) was partially blocked by brickwork to create a window. Doorway (**035**) was completely blocked by modern breeze blocks. The windows had splayed reveals and the doorways had flush reveals. Fitted on the east-facing wall was a metal electrical junction box with internal ceramic fittings and an X-shaped iron fitting bolted to the wall. The west-facing wall had a single door (**017**) and a single window (**018**); both had splayed reveals (Fig. 16).

The original northern wall, which presumably would have been rubble-built, must have been removed when Units 3 and 5 were added to the northern end of the structure. At the

point where the wall was removed for Unit 3, the ends had been strengthened with matching brick-built columns (**053** and **054**) constructed at the north-east and north-west corners of Unit 2 (Fig. 18)-19. These supported an iron I beam which allowed the space between Units 2 and 3 to be open. Above the I beam, the gable was rebuilt in brick in order to support the northern end of the original Unit 2 roof.

In the eastern side of the north-facing wall of the Phase 3 portion of the Unit was a single doorway (**012**) that was built against the end of the earlier boundary wall (**023**). A set of L-shaped brackets (**057**) projected from the wall; these had supported a now missing piece of machinery. Adjacent to (**057**) and bolted to the wall was a cast iron belt drive flywheel with a fluted cast iron body (**058**) (Fig. 13-14). Cast into the body was the maker's name 'Mather & Platt Manchester' who formed in 1845 and exhibited textile finishing equipment at the Great Exhibition in 1851 (Fig. 15).

An Insurance map of the site from 1911 labels Unit 2 as for 'Bleaching' (Fig. 29).

Unit 3: Drying Room

Unit 3 was a brick-built extension butted against the northern end of Unit 2, and which utilised the rubble built boundary wall (**023**) as its eastern side. In this eastern wall was a single doorway (**052**) which led to Unit 5. It had a smooth concrete floor and was open at its northern and southern ends where it led into Units 4 and 2 respectively. The northern wall of Unit 2 was removed when Unit 3 was built, but it was presumably rubble built.

The western wall was constructed of red brick (**037**) and contained a brick blocked doorway (**039**) and a brick blocked window topped with a shallow arch (**038**).

The Insurance map of the site from 1911 (Fig 29) labels Unit 3 as for 'Drying'.

Unit 4: Use unknown

Unit 4 formed the northern end of the Weaving Shed. It was open to the south where it joined to Unit 3. Internally it had a smooth concrete floor and was otherwise featureless.

The western wall was brick and was joined to the brick wall of Unit 3. The bricks of both walls were a slightly different size. It contained a single doorway (**042**), which had a concrete lintel and a painted vertical wooden board door.

The northern gable wall was brick built with an offset double doorway (**027**) with an iron I-beam lintel.

The eastern wall was featureless, comprising the wall forming the complex's original eastern boundary wall (**023**).

The Insurance map of the site from 1911 (Fig 29) shows Unit 4 prior to construction but labels the as area an 'Iron Wheel Store'

Unit 5: Use unknown

Unit 5 was partially derelict and had suffered from vandalism and an arson attack. The Unit was an extension to the north of Unit 2 and was built against the eastern exterior of the Mill complex's eastern boundary wall (029), which contained a single doorway (052) to Unit 3.

The Unit was square with a smooth concrete floor. The southern end of Unit 5 was open into Unit 2, and an iron I-beam had been inserted with bricks above creating a new partial gable. The remains of concrete render and a concrete raggle line showed the roof had been a sloped corrugated roof (024).

The northern wall was brick built and was sloped, mirroring the sloped render line in the north-facing gable. It contained a single doorway (074) and a square window (075). The eastern brick wall was built into the natural slope but had been vandalised so that the wall survived only to the external ground level.

4.4 Garage

The Garage (Phase 5) was a square structure built utilising the north-eastern corner of the Mill's rubble-built boundary wall (023). The Garage had brick-built southern and western walls and the eastern and northern walls were formed from the earlier stone-built boundary walls. It originally had a hipped roof covered in grey slate with a skylight on the east-facing elevation; this had collapsed into the building.

4.4.1 External Elevations

North-facing Elevation (Fig. 4f)

The boundary wall (023) forming this side of the garage had had a large double doorway with sliding doors punched through, with a metal travel rail above (072) (Fig. 22).

East-facing elevation (Fig. 4i)

The east-facing elevation was plain. The boundary wall (023) forming this side of the garage had been heightened and made level on its eastern side in order to create a wallhead for the garage roof.

South-facing Elevation (Fig. 4h)

The brick southern wall had three evenly spaced large timber-framed windows topped with low arches and concrete sills (060 – 062). Between each window was a brick buttress with a sloping concrete cap (063 - 065) (Fig. 20). The angle of the top of the brickwork and a concrete raggle line on the Garage wall show that it would have had a sloping corrugated roof.

West-facing Elevation (Fig. 4g)

The brick western wall had three evenly spaced large timber-framed windows topped with low arches and concrete sills (066 - 068). Between each window was a brick buttress with a sloping concrete cap (069 – 071) (Fig. 21).

Built against the northern rubble-built boundary wall and the external west-facing brick Garage wall was a small brick toilet block (073). This was accessed via a narrow timber door on the west-facing elevation and had a small timber-framed window and a ventilation grate on its south-facing elevation. Its roof had collapsed inwards but a concrete raggle line on the Garage wall showed the impression of a corrugated roof.

4.4.2 Internal Descriptions

Unit 6: Garage

Internally there was a smooth concrete floor with a rectangular inspection pit in the south-western quadrant of the floor (Fig. 23). The walls were covered in a white limewash render.

The east- and north-facing walls each had three large identical windows (060, 061, 062; 066, 067, 068); these were rectangular with low arched tops.

The south-facing wall had a double doorway with vertical board double doors with a metal travel rail above (072).

The west-facing wall was rubble stone built and was featureless.

Unit 7: Toilet

This unit had a narrow doorway on the western side and a small rectangular wooden-framed window on the southern wall (Fig. 24). There was no sanitary ware present and the space contained garbage bags.

Table 2. Principal features

Feature No.	Structure	Summary Description	Dimension(m)
001	Weaving Shed	Rubble built S-facing elevation of Weaving Shed.	7.5m to top of gable
002	Weaving Shed	Long and short quoins of S-facing elevation of Weaving Shed, the long quoins have shallow, tightly packed horizontal droving lines on 80% of the face with the 20% by the corner edge decorated with narrow vertical bands of short horizontal droving. This decoration is approximately 50:50 on the short quoins.	Varies Long 0.7m x 0.32m Short 0.32m x 0.32m
003	Weaving Shed	Blocked window high on S-facing gable end of Weaving Shed. Window had a stone lintel and remains of a damaged stone sill. Blocked flush to the main wall face by brickwork and covered by roof raggle line 004 of later building. Inner face has splayed reveals with a thin stone and a wooden lintel.	
004	Weaving Shed	Concrete raggle line for missing building on S-facing elevation of Weaving Shed. Lower part of concrete is saw blade shaped showing that the missing building had a slate roof.	
005	Weaving Shed	Remains of timber baton attached to S-facing elevation of Weaving Shed below the sill for 003. The baton is bolted to the wall and has 2 recesses cut into it and saw marks for a third unfinished recess.	

Feature No.	Structure	Summary Description	Dimension(m)
006	Weaving Shed	A small, square window with a low arched top in the S-facing elevation of the Weaving Shed. The window is blocked by brickwork. Inside faces are brick lined with a thin stone sill and wooden lintel.	
007	Weaving Shed	Large square window blocked by later brickwork. Window has long and short quoins decorated the same as 002. It has a stone lintel, the sill has been replaced with three squared stone blocks with brick repair work below. Inner face has splayed reveals and a stone lintel with a bevelled edge and a reused wooden sill with two drilled holes and a notch cut into it.	12m x 1.23m
008	Weaving Shed	Ten blocked floor joist holes in the S-facing elevation of Weaving Shed. In two rows, the lower has eight joist holes, above it is a row of two more. The lower row is 1m from current ground level. The holes are blocked and faced with concrete render: however, one in the lower row is brick blocked and one in the upper row has a sawn flush wooden joist in situ.	0.4m x 0.14m
009	Weaving Shed	Two adjacent damaged areas of S-facing elevation of Weaving Shed, stones from wall are missing and replaced with brick repair work.	0.4m x 0.7m and 0.4m x 0.3m
010	Weaving Shed	A section of brickwork repair to the lower E corner of 001.	1.9m x 1.3m
011	Weaving Shed	Rubble built S-facing elevation of eastern section of Weaving Shed.	3.7m x 6.5m
012	Weaving Shed	Doorway in S-facing elevation of Weaving Shed, E-side has long and short quoins decorated the same as 002. Heavily rotted large wooden lintel.	1.25m x 2.1m
013	Weaving Shed	On eastern edge of wall 011 is a rectangular iron tie plate for a rod, 019, that runs the length of the exterior E-facing elevation. The plate has two bolts and is a shallow C-shape in section.	0.45m x 0.24m
014	Weaving Shed	Two small iron pipes projecting from S-facing elevation of Weaving Shed approximately 2.5m from current ground level.	
015	Weaving Shed	The weight of the collapsing roof is causing the stonework at the top of the eastern side of the gable of the S-facing elevation to become loose.	14.9m x 3.7m
016	Weaving Shed	Rubble built E-facing elevation of Weaving Shed, same as 011.	4 x 4.6
017	Weaving Shed	Doorway in E-facing elevation of Weaving Shed with long and short quoins with decoration the same as 002. A thin stone lintel at the same height as the wallhead. On the inner face the doorway has splayed reveals and a wooden lintel. Doorway has modern boarding blocking.	1.36m x 2.7m
018	Weaving Shed	Large window in E-facing elevation of Weaving Shed with long and short quoins with similar decoration to 002, a thin stone lintel at wallhead height and a stone sill. Window has an iron bar grill covering the outside face. Inner face has splayed reveals with a wooden lintel.	1.2m x 2.1m
019	Weaving Shed	Iron tie rod bar running along the length of E-facing elevation of Weaving Shed, connects to 013 and 020.	
020	Weaving Shed	Iron tie rod plate on N-facing elevation of Weaving Shed, the same as 013, and is connected by rod 019.	0.45m x 0.24m
021	Weaving Shed	Partially collapsed brick-built N and E walls of Unit 5. Built into the natural slope of the topography.	7.8m x 5.8m

Feature No.	Structure	Summary Description	Dimension(m)
022	Weaving Shed	I beam in section of E-facing elevation of Weaving Shed.	
023	Boundary wall	Rubble built wall forming E and N boundary wall of site.	
024	Weaving Shed	Concrete raggle line for sloped roof of Unit 5 on 023. Shape in the concrete shows the roof was corrugated.	
025	Weaving Shed	Single row of edge-on bricks to heighten wall 023, possibly added when wallhead was heightened during a roof repair.	
026	Weaving Shed	Brick built gable N-facing elevation of Weaving Shed built with Common Bond, the end on bricks were picked out with pale yellow bricks.	9.1m x 6.4m
027	Weaving Shed	Large doorway in N-facing elevation of Weaving Shed with an I beam lintel.	3.5m x 3.34m
028	Weaving Shed	W-facing elevation of Weaving Shed, rubble built with large squared off blocks and smaller packing stones.	17.2m x 3.4m
029	Weaving Shed	Square doorway in W-facing elevation of Weaving Shed with large wooden lintel and relieving arch above. Long and short quoins with the same decoration as 002. Wooden lintel appears to be reused as it has nails, bolts and notches and recesses within it. The door reveals are flush.	2.1m x 1.87m
030	Weaving Shed	Window in W-facing elevation of Weaving Shed with stone lintel and flush stone sill. Long and short quoins with same decoration as 002 but heavily worn.	1.23m x 1.92m
031	Weaving Shed	A doorway in W-facing elevation of Weaving Shed with arched top and stone voussoirs and long and short quoins with similar decoration to 002; has been partially blocked, 032, to create a window. The inserted sash window has a lower 4 over two, the upper half is divided into five vertical running sections with the out and central sections subdivided into square panes. The new window has a concrete sill. The doorway/window has splayed reveals.	1.88m x 1.6m
032	Weaving Shed	Brickwork blocking to lower half of doorway 031 to create a window.	1.09m x 1.6m
033	Weaving Shed	Square window in W-facing elevation of Weaving Shed with stone lintel, flush stone sill and long and short quoins with same decoration as 002 albeit heavily worn. Remains of sash window, lower half is missing but upper half is divided into three vertical running sections with the outer ones subdivided into square panes in a similar style to 031.	1.92m x 1.23
034	Weaving Shed	Decorative course of long, flat stones projecting from the wall head on W-facing elevation of Weaving Shed.	
035	Weaving Shed	A doorway in W-facing elevation of Weaving Shed with arched top and stone voussoirs similar to 031. The doorway has been blocked with breeze blocks.	1.88m x 1.6m
036	Weaving Shed	W-facing elevation of Weaving Shed, long and short quoins with similar decoration to 002.	
037	Weaving Shed	W-facing elevation of Weaving Shed, brick wall butted onto stone wall 028.	6.9m x 4.23m
038	Weaving Shed	W-facing elevation of Weaving Shed, arched window that has been blocked by later pink/yellow brickwork.	1.93m x 1.23m
039	Weaving Shed	W-facing elevation of Weaving Shed, brick blocked doorway, bricks are flush with main wall, the lintel has also been removed and replaced with bricks.	2m x 2.8m

Feature No.	Structure	Summary Description	Dimension(m)
040	Weaving Shed	Large wooden beam forming the wallhead on the W-facing elevation of Weaving Shed at Unit 4.	
041	Weaving Shed	W-facing elevation of Weaving Shed brickwork of Unit 5, same Common Bond as 026.	7.5m x 3.55m
042	Weaving Shed	W-facing elevation of Weaving Shed doorway with concrete lintel and blue painted vertical board wooden door.	1m x 2.15m
043	Weaving Shed	Unit 1, a narrow corridor with access to the exterior via doorway 029. Concrete floor with rubble-built walls with a limewash render.	2.46m x 8.53m
044	Weaving Shed	Smooth concrete flooring in Unit 1.	2.46m x 8.53m
045	Weaving Shed	Unit 1/2. Remains of a brick wall, now demolished and flush with floor, would have formed the N wall of Unit 1.	
046	Weaving Shed	Unit 1. An L-shaped brick-built buttress against the southern rubble-built wall. Upper section is covered in a limewash render and lower 1m has a concrete render.	3.3m x 0.72m (1.58m at base)
047	Weaving Shed	Unit 1, remains of two junction boxes on southern rubble wall, the box that remains has metal label on the front for 'GEC England'.	0.47m x 0.32m
048	Weaving Shed	Unit 2, a large square room with rubble-built walls and smooth concrete floor.	14.3m x 15.2m
049	Weaving Shed	Unit 2, a heavily rusted junction box on the western wall.	0.25 x 0.8m
050	Weaving Shed	Unit 2, an X-shaped metal bracket on the western wall.	0.22m x 0.22m
051	Weaving Shed	Unit 3. A rectangular room with rubble built eastern wall and a brick built western wall, open on the north and south sides with a smooth concrete floor.	8.86m x 6.8m
052	Weaving Shed	Unit 3, doorway in eastern rubble-built wall, wooden lintel and brick facing on southern side, wooden doorframe survives.	1.2m x 2.1
053	Weaving Shed	Unit 2-3, rubble-built buttress with brick repair/facing, opposite 054 - both form the support for new upper gable and roof support.	
054	Weaving Shed	Unit 2-3, rubble-built buttress with brick repair/facing, opposite 053 - both form the support for new upper gable and roof support.	
055	Weaving Shed	Unit 4. A rectangular room with rubble built eastern wall and a brick built western and northern wall with a smooth concrete floor.	7.1m x 8.8m
056	Weaving Shed	Unit 5. Smooth concrete floor with rubble-built western wall, brick built northern and eastern walls with an open southern side.	5.66m x 6.66m
057	Weaving Shed	Unit 2, two adjacent L-shaped iron brackets 0.28m apart projecting 0.56m from rubble built southern wall. Presumably they would have held a now missing piece of equipment.	
058	Weaving Shed	Unit 2, iron brackets and fluted shaped cast iron gear unit 0.67m tall and flywheel for leather drive belts on southern rubble-built wall. Flywheel has a diameter of 0.63m. On gear casing is cast the manufacturer's name of 'Mather & Platt Manchester'.	
059	Garage	Unit 6, Garage with smooth concrete floor with rectangular inspection pit (2.1m x 0.9m). North and eastern walls are rubble built with limewash render,	7.65m x 10.7m

Feature No.	Structure	Summary Description	Dimension(m)
		western and southern walls are brick built with limewash render.	
060	Garage	South-facing elevation of Garage, large window with shallow arched top and concrete projecting sill.	1.9m x 1.23m
061	Garage	South-facing elevation of Garage, large window with shallow arched top and concrete projecting sill.	1.9m x 1.23m
062	Garage	South-facing elevation of Garage, large window with shallow arched top and concrete projecting sill.	1.9m x 1.23m
063	Garage	South-facing elevation of Garage, brick-built buttress, projects 0.24m from main wall, with sloped concrete capping.	0.48m x 3.5m
064	Garage	South-facing elevation of Garage, brick-built buttress, projects 0.24m from main wall, with sloped concrete capping.	0.48m x 3.5m
065	Garage	South-facing elevation of Garage, brick-built buttress, projects 0.24m from main wall, with sloped concrete capping.	0.48m x 3.5m
066	Garage	West-facing elevation of Garage, large window with shallow arched top and concrete projecting sill.	1.9m x 1.23m
067	Garage	West-facing elevation of Garage, large window with shallow arched top and concrete projecting sill.	1.9m x 1.23m
068	Garage	West-facing elevation of Garage, large window with shallow arched top and concrete projecting sill.	1.9m x 1.23m
069	Garage	West-facing elevation of Garage, brick-built buttress, projects 0.24m from main wall, with sloped concrete capping.	0.48m x 3.5m
070	Garage	West-facing elevation of Garage, brick-built buttress, projects 0.24m from main wall, with sloped concrete capping.	0.48m x 3.5m
071	Garage	West-facing elevation of Garage, brick- built buttress, projects 0.24m from main wall, with sloped concrete capping.	0.48m x 3.5m
072	Garage	Unit 6, The entrance to the garage, a double doorway with vertical board double doors with a metal travel rail above.	2.96m x 4.8m
073	Garage	Unit 7, toilet block butted onto garage Unit 6. Northern wall rubble stone built, eastern wall brick wall of Unit 6, western and southern walls are brick. Doorway in western wall and small, 0.77m x 0.43m, window in southern wall.	1.6m x 1.33m
074	Weaving Shed	Unit 5, a doorway in the south-facing elevation, damaged by vandalism.	1.04m x 2m
075	Weaving Shed	Unit 5, a square window in the south-facing elevation, remains of a 3 over 4 window behind iron security bars.	1.2m x 1.2m

5. DISCUSSION

Stanley Mills was founded the late 1700s with technical and financial support from Richard Arkwright, who himself had greatly developed and expanded the cotton industry in England. The site developed and grew and, over the years, its fortunes waxed and waned, until it eventually closed in 1989. The site was bought by Historic Scotland in 1995 and restored between then and 2007.

The Weaving Shed, Garage and ancillary buildings were not included as part of the restoration and instead fell into dereliction and became the target of vandalism. The buildings are a record of the development and expansion of the eastern side of the mill during its later years, with the brick structures being built around the turn of the 20th century.

Originally the Weaving Shed began as a single rubble-built building (Phase 1), built in the south-east corner of the site's boundary wall, as part of the 1823-25 expansion of the Mill (Cressey & Fitzgerald 2011). The building was initially expanded southward (Phase 2); however, the site's position adjacent to the River Tay meant that further expansion had to go in a different direction, initially heading eastward with a stone built extension to the original building (Phase 3), taking it beyond the boundary wall. Three further, later expansions were added to the north as less substantial brick buildings (Phases 5, 6 and 7).

The brick built, 20th century Garage was built into the north-east corner of the site's boundary wall and a small toilet was added to its exterior.

6. CONCLUSION

The survey has recorded the structure and phased development of the Weaving Shed, Garage and ancillary buildings at Stanley Mills prior to and after their partial demolition. No further work is recommended to record these structures; however, it is understood that the final decision on this rests with PKHT.

The project archive, comprising all CFA record sheets, maps and reports, will be deposited with the NRHE and copies of reports will be lodged with Perth and Kinross Council Historic Environment Record.

7. REFERENCES

Cartographic

Ordnance Survey 1865 Perth and Clackmannanshire, LXXIV.13 (Auchtergaven)

Ordnance Survey 1901 Perth and Clackmannanshire LXXIV.13

Bibliographic

ALGAO Scotland 2013 *Historic Building Recording Guidance for Curators, Consultants and Contractors*.

Cressey & Fitzgerald, 2011, *Force and Fabric, Archaeological Investigations at Stanley Mills, Archaeology report No.5*, Historic Scotland.

APPENDIX 1: Photographic Register

Shot No.	Summary description of subject	Facing
1	General view of S-facing elevation	NE
2	General view of S-facing elevation	NW
3	General view of S-facing elevation	N
4	General view of S-facing elevation	N
5	General view of S-facing elevation	NE
6	Arched doorway in S-facing elevation	N
7	Arched doorway in S-facing elevation	NW
8	Remains of render on S-facing elevation	N
9	General view of S-facing elevation	N
10	Blocked floor joists 008	NW
11	Blocked floor joists 008	N
12	Blocked window 007	N
13	Blocked windows 003, 006, 007 and wooden baton 005	N
14	Brick repair work 009	N
15	Quoins 002	NE
16	Quoins 002 detail showing droving decoration	NE
17	Brick repair work 010	N
18	E-facing elevation	W
19	S-facing elevation and doorway 012	N
20	E-facing elevation with tie rod plate 013 and pipes 014	N
21	E-facing elevation with tie rod plate 013	N
22	E-facing elevation with tie rod plate 013	N
23	S-facing elevation and doorway 012	N
24	Unit 2 prior to demolition showing rows of iron columns	N
25	E-facing elevation showing state of roof	W
26	E-facing elevation showing state of roof	SW
27	E-facing elevation showing state of roof	SW
28	E-facing elevation showing state of roof	W
29	E-facing elevation, doorway 017 and window 018	W
30	Unit 5, missing roofline in concrete render	SW
31	Unit 5, I beams 022	SW
32	Tie rod plate 022	SW
33	Tie rod plate 022	SW
34	Tie rod plate 022	SW
35	Unit 5 general view	SW
36	N-facing elevation of Unit 5 with window 075 and doorway 074	S
37	Corrugated roof rattle line 024	W
38	Unit 5 general view	W
39	E-facing boundary wall 023	W
40	N-facing elevation of Unit 4	S
41	N-facing elevation of Unit 4	S
42	N-facing elevation of Unit 4, brickwork	SE
43	Doorway 027 with I beam lintel	S
44	S end of W-facing elevation	E
45	S end of W-facing elevation	SE
46	Middle of W-facing elevation	E
47	Doorway 029	E
48	Doorway 029 detail of reused lintel	E
49	Doorway 029 quoins	E
50	Window 030	E
51	Doorway 029 and window-030	SE
52	Blocked doorway 031	E
53	Blocked doorway 031 and window 030	SE
54	Window 033	E

Shot No.	Summary description of subject	Facing
55	Blocked doorway 031 and window 033	SE
56	Blocked doorway 035	E
57	S end of W-facing elevation	SE
58	S end of W-facing elevation	SE
59	Remains of wooden gantry	E
60	Remains of wooden gantry	E
61	Remains of wooden gantry	NE
62	Join between Unit 2 and 3	E
63	Join between Unit 2 and 3	E
64	Blocked doorway 039	E
65	Blocked window 038	E
66	W-facing elevation of Unit 3	NE
67	W-facing elevation of Unit 3	E
68	W-facing elevation of Unit 4	NE
69	W-facing elevation of Unit 4	SE
70	W-facing elevation of Unit 4	SE
71	Doorway 042	E
72	Doorway 042	E
73	W-facing elevation of Units 3 and 4	SE
74	Unit 6 Garage S-facing elevation	NE
75	Unit 6 Garage S-facing elevation	N
76	Window 060	N
77	Brick buttress 063	NW
78	Window 061	N
79	Brick buttress 063	NE
80	Window 062	NW
81	Unit 6 Garage S-facing elevation	NE
82	Unit 6 Garage W-facing elevation	NE
83	Window 066	E
84	Unit 7	NE
85	Unit 7	E
86	Unit 7	E
87	Unit 7	E
88	Unit 6 Garage N-facing elevation with garage door 072	S
89	Unit 6 Garage N-facing elevation with garage door 072	S
90	Unit 6 Garage N-facing elevation with garage door 072	SE
91	Unit 6 Garage N-facing elevation with garage door 072	SW
92	E-facing elevation boundary wall 023	W
93	Post demolition looking south into weaving shed	S
94	Post demolition looking south into weaving shed	S
95	Unit 1 southern wall	S
096	Brick buttress 046	S
097	Unit 1 inner face of blocked window 007	S
098	Unit 1 inner face of blocked window 007	SE
099	Unit 1 inner face of blocked window 003	S
100	Unit 1 wall mounted junction box 047	S
101	Unit 1 wall mounted junction box 047with door open	S
102	Unit 1 wall mounted junction box GEC ENGLAND label on door	S
103	Unit 1 and 2 western wall	W
104	Unit 1 and 2 western wall	W
105	Unit 1 remains of brick dividing wall on floor	E
106	Unit 1 inner face of doorway 029	W
107	Unit 1 inner face of doorway 029 detail of reused wooden lintel	W
108	Unit 1 inner face of doorway 029	W
109	Unit 2 wall mounted junction box 049	W
110	Unit 2 inner face of window 030	W
111	Unit 2 inner face of blocked doorway 031	W

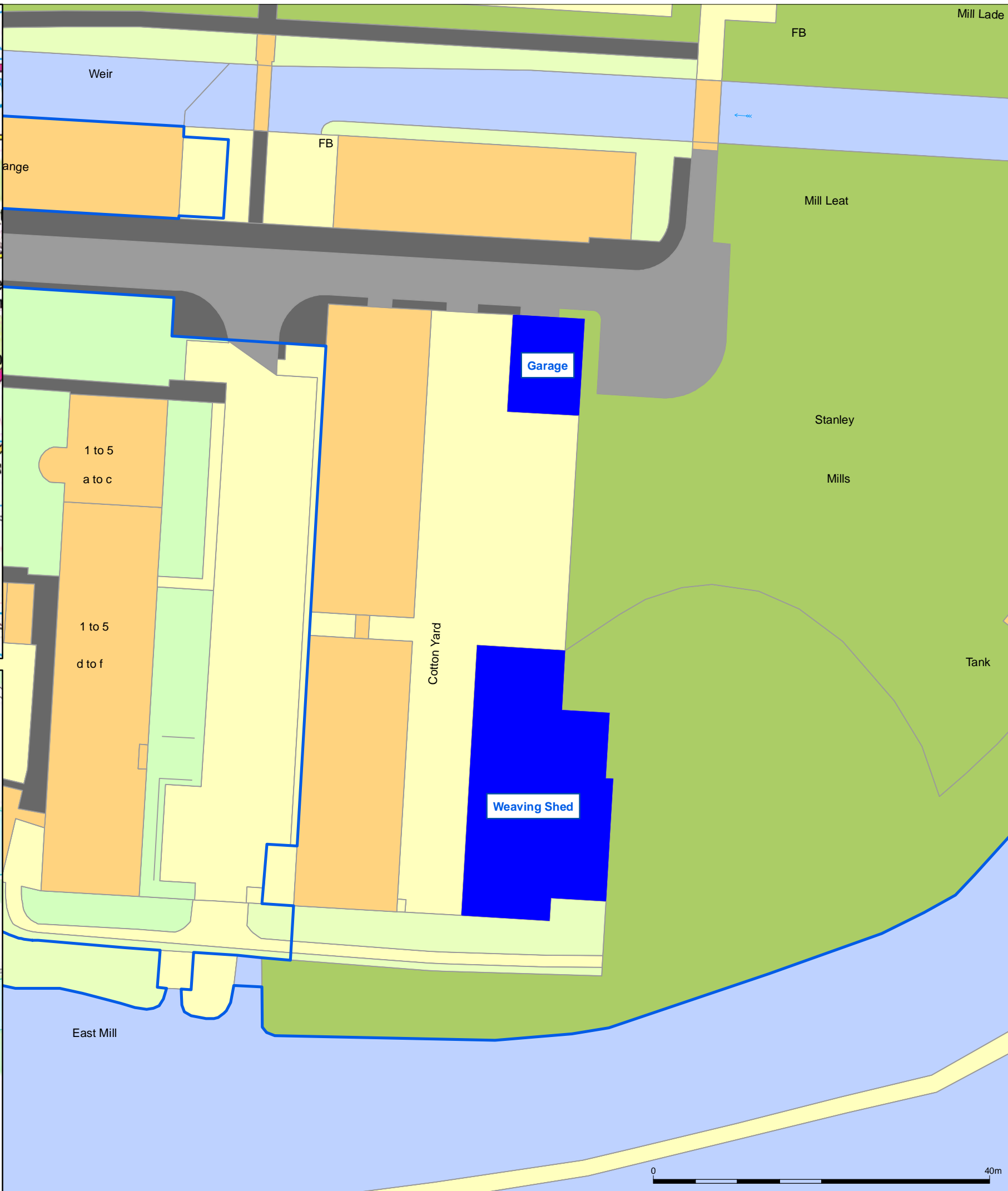
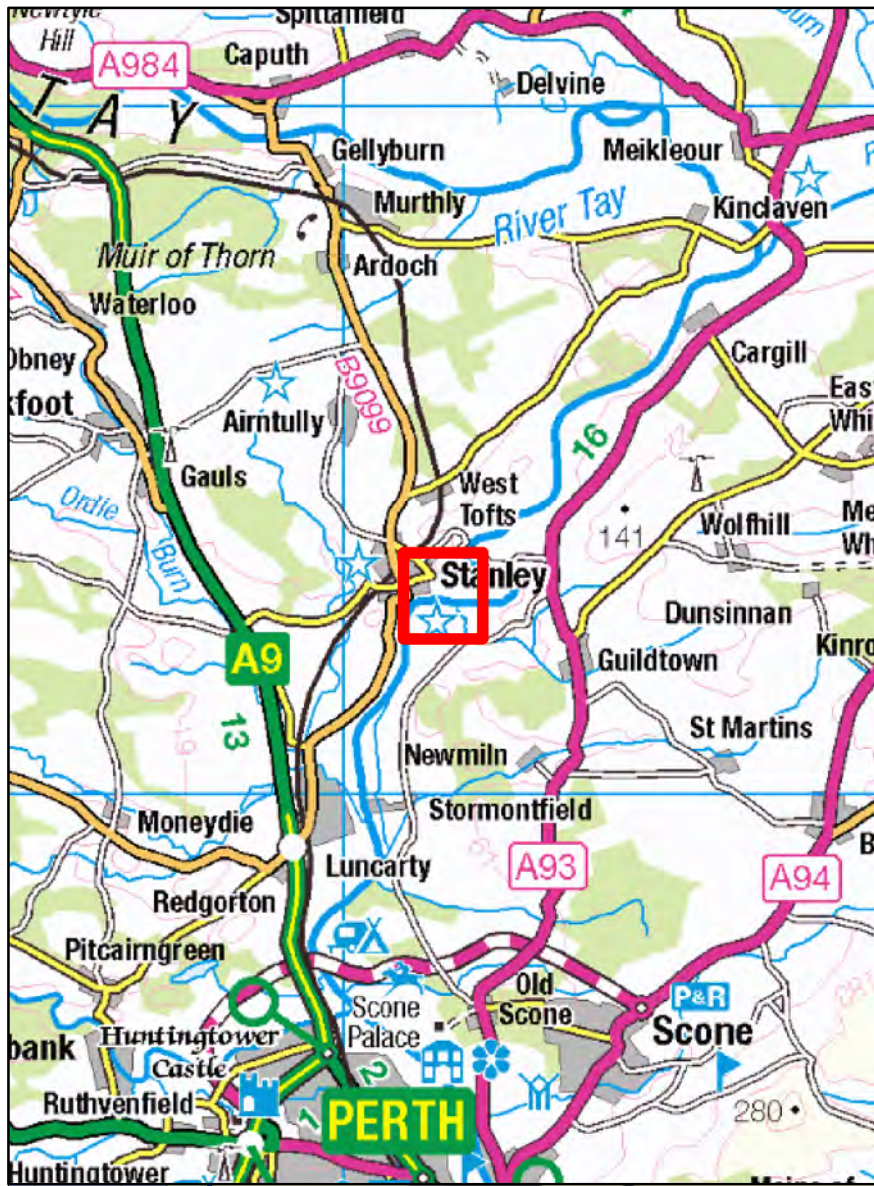
Shot No.	Summary description of subject	Facing
112	Unit 2 wooden dowels on wall	W
113	Unit 2 inner face of window 033	W
114	Unit 2 inner face of window 033	W
115	Unit 2 X-shaped bracket on wall	W
116	Unit 2 inner face of blocked doorway 054	W
117	Unit 2 brick support column 034	SW
118	Unit 3 brick wall line thickness	S
119	Unit 3 brick wall line thickness	S
120	Unit 4 remains of northern wall	NE
121	Unit 4 remains of northern wall	E
122	Units 3 and 4 eastern wall	E
123	Unit 3 wooden bracket on eastern wall	E
124	Units 3 eastern wall	E
125	Unit 5 doorway 052	E
126	Unit 2 brick and stone support column 053	E
127	Unit 2 brick and stone support column 053	NE
128	Unit 2 brick and stone support column 053	N
129	Unit 5 doorway 052	W
130	Unit 5 doorway 052	W
131	Unit 5 remains of northern wall	N
132	Unit 5, bracket	na
133	Unit 5, bracket	na
134	Unit 5 remains of eastern wall	E
135	Unit 5 remains of eastern wall	E
135	Unit 5 remains of eastern wall	E
136	Unit 5 remains of eastern wall	E
137	Unit 2 inner face of window 018 and doorway 017	E
138	Unit 2 inner face of window 018	E
139	Unit 2 inner face of doorway 017	E
140	Unit 2 inner face of doorway 017 lintel	E
141	Unit 2 eastern wall cut off wooden features	E
142	Unit 2 eastern wall small metal bracket	E
143	Unit 2 southern wall	S
144	Metal brackets 057 and flywheel 058	SE
145	Metal brackets 057	SE
146	Graffiti on wall next to 057	S
147	Flywheel 058	SW
148	Flywheel 058	E
149	Flywheel 058 makers name	E
150	Pipe 014 on inner wall	S
151	Doorway 012 brick repair on facing	S
152	Doorway 012 brick repair on facing	S
153	Doorway 012	S
154	Metal brackets 057 and flywheel 058	SE
155	Unit 1 eastern wall	E
156	Unit 1 eastern wall	E
157	Unit 1 eastern wall	E
158	Unit 1 SE corner	SE
159	Stamped bricks from demolition of Unit 3 and 4	na
160	Stamped bricks from demolition of Unit 3 and 4	na
161	Stamped bricks from demolition of Unit 3 and 4	na
162	Unit 6 Garage	NE
163	Unit 6 W-facing elevation	E
164	Unit 6 S-facing elevation	N
165	Unit 6 interior showing limewashed walls	NW
166	Unit 6 interior	N
167	Unit 6 interior	NE

Shot No.	Summary description of subject	Facing
168	Unit 6 vehicle inspection pit in floor	N
169	Unit 6 general	N
170	Unit 7 stamped brickwork	na
171	Post demolition I beams	na
172	Post demolition I beams	na
173	Post demolition iron columns	na
174	Post demolition iron columns	na
175	Post demolition iron columns	na
176	Post demolition iron columns	na
177	Post demolition iron columns	na
178	Post demolition iron columns	na
179	Post demolition iron columns	na
180-192	Post demolition composite wood and metal roof trusses	na
193	Brick column 054	SW
194	Brick column 053	NE
195	Brick column 053	NE
196	Brick column 053	NW
197	Brick column 053	NW
198	Unit 1 and 2 western wall	W
199	Unit 1 and 2 SW corner	SW
200	Unit 5	N
201	Unit 2 SE corner	SE

APPENDIX 2: Discovery & Excavation in Scotland Entry

LOCAL AUTHORITY:	Perth & Kinross
PROJECT TITLE/SITE NAME:	Weaving Shed, Garage and ancillary buildings at the East Range of Stanley Mills
PROJECT CODE:	MINA160
PARISH:	Auchtergaven
NAME OF CONTRIBUTOR:	Graeme Carruthers
NAME OF ORGANISATION:	CFA Archaeology Ltd
TYPE(S) OF PROJECT:	Enhanced Standing Building Survey
CANMORE ID:	None
SITE/MONUMENT TYPE(S):	Weaving shed and garage
SIGNIFICANT FINDS:	N/A
NGR (2 letters, 6 figures)	NO 11473 32800
START DATE (this season)	April 2022
END DATE (this season)	May 2022
PREVIOUS WORK (incl. DES ref.)	None
MAIN (NARRATIVE) DESCRIPTION: (May include information from other fields)	Stanley Mills was founded the late 1700s with technical and financial support from Richard Arkwright, who himself had greatly developed and expanded the cotton industry in England. The site developed and grew and, over the years, its fortunes waxed and waned, until it eventually closed in 1989. The site was bought by Historic Scotland in 1995 and restored between then and 2007.

	<p>The Weaving Shed, Garage and ancillary buildings were not included as part of the restoration and instead fell into dereliction and became the target of vandalism. The buildings are a record of the development and expansion of the eastern side of the mill during its later years, with the brick structures being built around the turn of the 20th century.</p> <p>Originally the Weaving Shed began as a single rubble-built building (Phase 1), built in the south-east corner of the site's boundary wall, as part of the 1823-25 expansion of the Mill (Cressey & Fitzgerald 2011). The building was initially expanded southward (Phase 2); however, the site's position adjacent to the River Tay meant that further expansion had to go in a different direction, initially heading eastward with a stone built extension to the original building (Phase 3), taking it beyond the boundary wall. Three further, later expansions were added to the north as less substantial brick buildings (Phases 5, 6 and 7).</p> <p>The brick built, 20th century Garage was built into the north-east corner of the site's boundary wall and a small toilet was added to its exterior.</p>
PROPOSED FUTURE WORK:	None
CAPTION(S) FOR ILLUSTRS:	None
SPONSOR OR FUNDING BODY:	HES
ADDRESS OF MAIN CONTRIBUTOR:	CFA Archaeology Ltd, Old Engine House, Eskmills Park, Musselburgh, EH21 7PQ.
EMAIL ADDRESS:	cfa@cfa-archaeology.co.uk
ARCHIVE LOCATION (intended/deposited) e.g NRHE	Archive to be deposited with NRHE, Reports lodged with Perth & Kinross HER.




Key:

- PIC 043 Boundary
- Surveyed Area

Contains Historic Environment Scotland data
© Historic Environment Scotland

© Crown copyright and database rights [2017] Ordnance Survey [100057073]. You are permitted to use this data solely to enable you to respond to, or interact with, the organisation that provided you with the data. You are not permitted to copy, sub-licence, distribute or sell any of this data to third parties in any form



CFA ARCHAEOLOGY LTD
The Old Engine House
Eskmills Park
Musselburgh
East Lothian, EH21 7PQ
T: 0131 273 4380
F: 0131 273 4381
info@cfa-archaeology.co.uk
www.cfa-archaeology.co.uk

Title:
Site location plan

Project:
Part demolition of derelict waving sheds, garage and ancillary buildings, East Range, Stanley Mills, Stanley, Perthshire (PIC043)

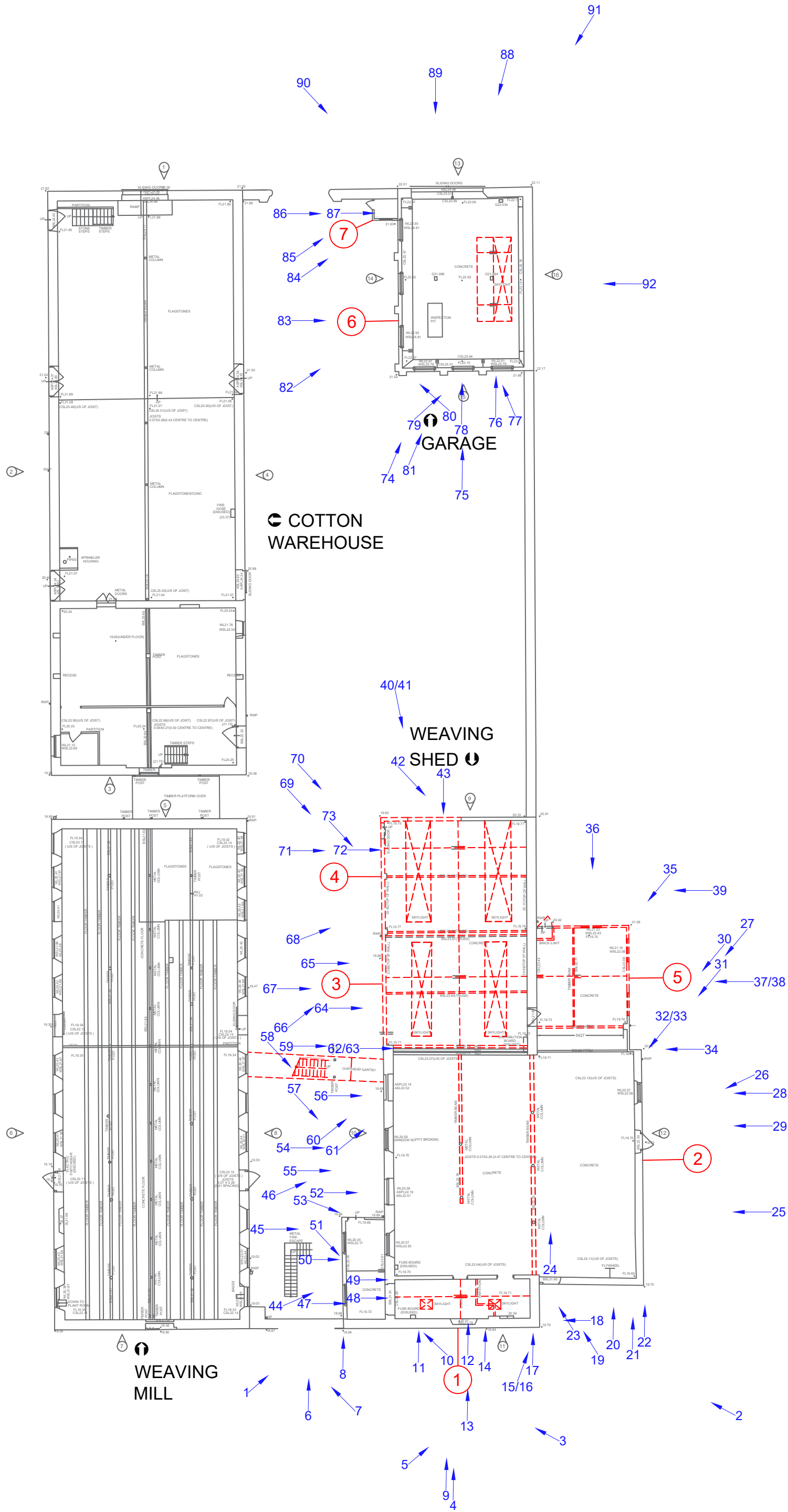
Client:
Historic Environment Scotland

Scale at A3:
1:500

Drawn by: SG	Checked by: GC	Date: 31/08/2022
-----------------	-------------------	---------------------

Report No: 4189	Fig. No: 1
--------------------	---------------

0 40m



- Key:**
- Proposed downtakings
 - ← 1 Photograph locations
 - 7 Units



Contains Historic Environment Scotland, Ordnance Survey and Aerial Imagery Data © Historic Environment Scotland © Crown copyright and database rights 2020 Ordnance Survey [100057073] © Getmapping

CFA
 ARCHAEOLOGY LTD
 The Old Engine House
 Eskmills Park
 Musselburgh
 East Lothian, EH21 7PQ
 T: 0131 273 4380
 F: 0131 273 4381
 enquiries@cfa-arch.co.uk
 www.cfa-archaeology.co.uk

Title:
Site plan with Units and pre-demolition photograph locations

Project:
Part demolition of derelict waving sheds, garage and ancillary buildings, East Range, Stanley Mills, Stanley, Perthshire (PIC043)

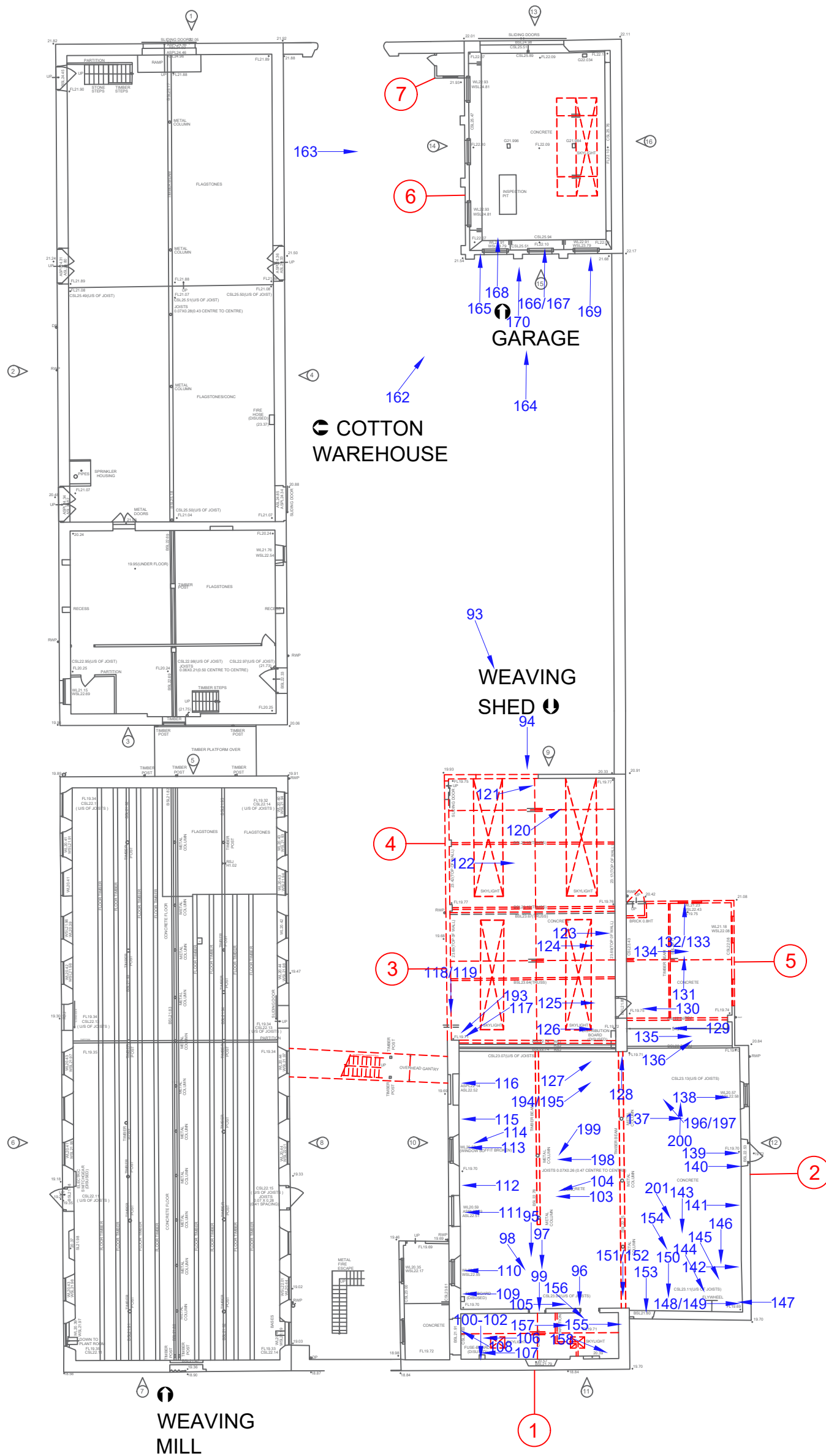
Client:
HES

Scale at A3:
1:250

Drawn by: SG	Checked: GC	Date: 31/08/22
------------------------	-----------------------	--------------------------

Report No.: 1489	Fig. No.: 2a
----------------------------	------------------------





Key:

- Proposed downtakings
- ← Photograph locations
- 7 Units



Contains Historic Environment Scotland, Ordnance Survey and Aerial Imagery Data © Historic Environment Scotland © Crown copyright and database rights 2020 Ordnance Survey [100057073] © Getmapping

CFA
ARCHAEOLOGY LTD

CFA ARCHAEOLOGY LTD
The Old Engine House
Eskmills Park
Musselburgh
East Lothian, EH21 7PQ
T: 0131 273 4380
F: 0131 273 4381
enquiries@cfa-arch.co.uk
www.cfa-archaeology.co.uk

Title:
Site plan with Units and post-demolition photograph locations

Project:
Part demolition of derelict waving sheds, garage and ancillary buildings, East Range, Stanley Mills, Stanley, Perthshire (PIC043)

Client:
HES

Scale at A3:
1:250

Drawn by: SG	Checked by: GC	Date: 31/08/22
-----------------	-------------------	-------------------

Report No: 1489	Fig. No: 2b
--------------------	----------------



Key:



Surveyed Area

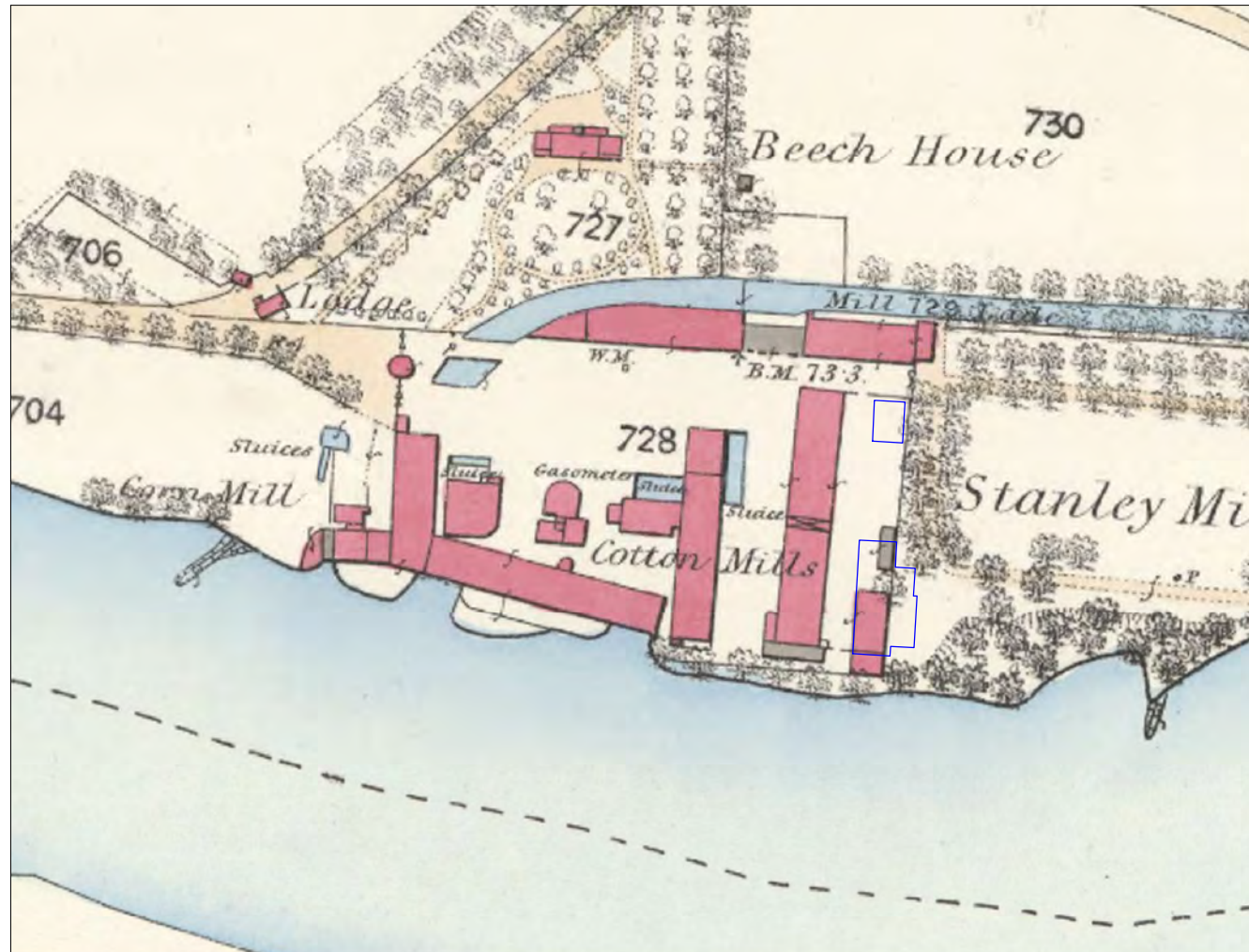


Fig 3a: OS 25 inch 1st Edition; Perth and Clackmannanshire, LXXIV.13 (Auchtergaven) 1865

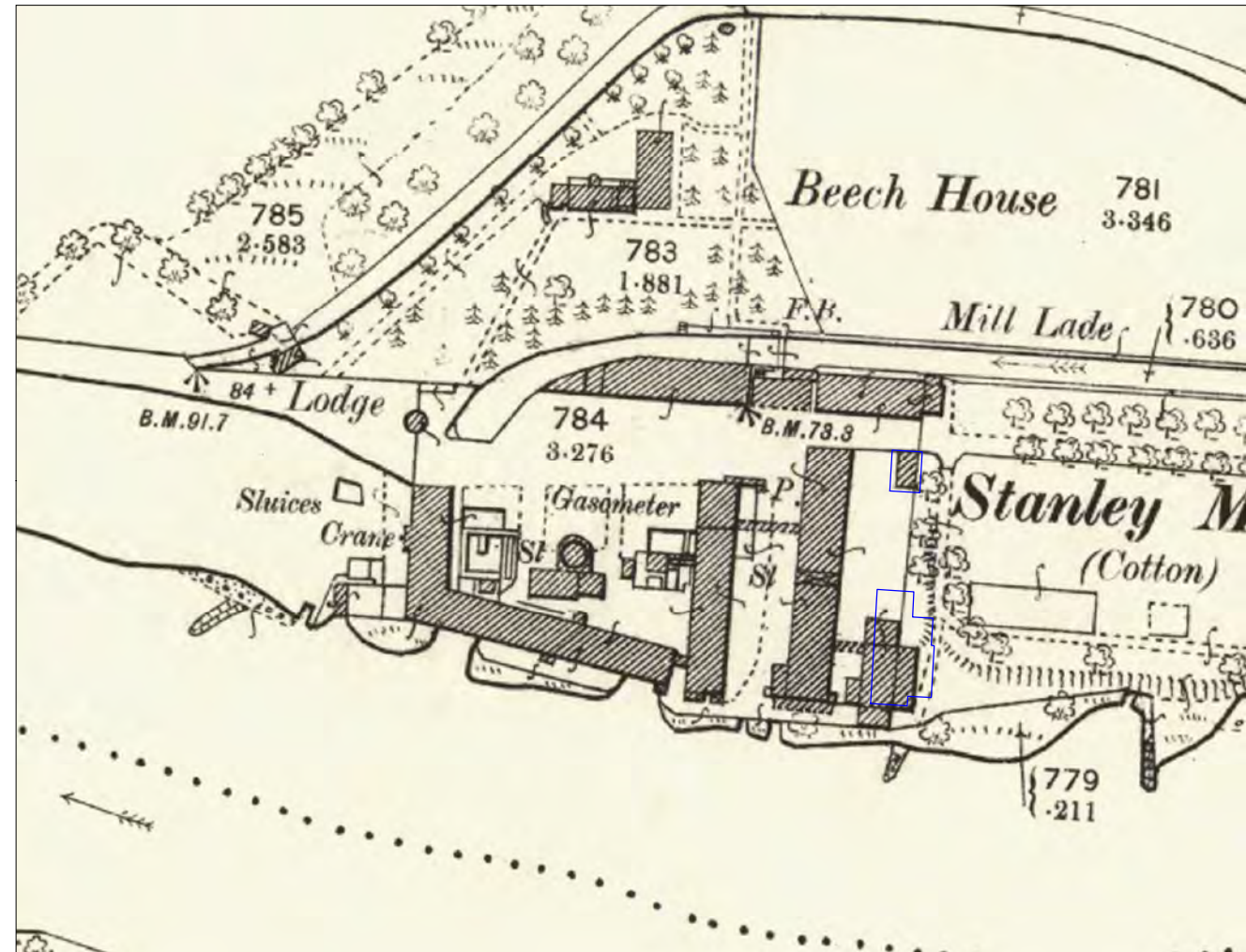


Fig 3b: OS 25 inch 1901 Edition, Perth and Clackmannanshire, LXXIV.13

Contains Historic Environment Scotland data
© Historic Environment Scotland

© Crown copyright and database rights [2017] Ordnance Survey [100057073]. You are permitted to use this data solely to enable you to respond to, or interact with, the organisation that provided you with the data. You are not permitted to copy, sub-licence, distribute or sell any of this data to third parties in any form

CFA ARCHAEOLOGY LTD
 The Old Engine House
 Eskmills Park
 Musselburgh
 East Lothian, EH21 7PQ
 T: 0131 273 4380
 F: 0131 273 4381
 info@cfa-archaeology.co.uk
 www.cfa-archaeology.co.uk

Title:
Map Regression

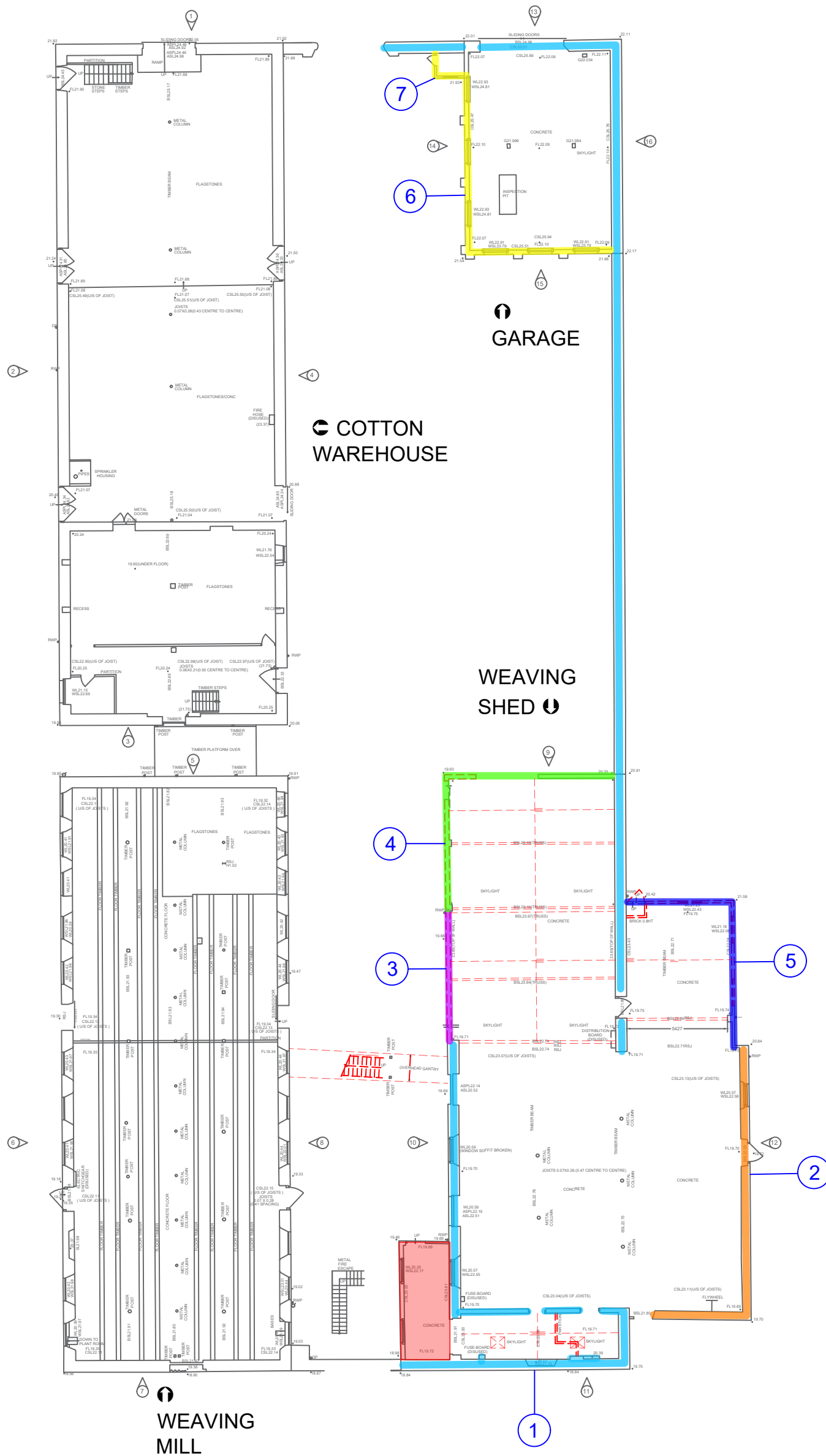
Project:
Part demolition of derelict waving sheds, garage and ancillary buildings, East Range, Stanley Mills, Stanley, Perthshire (PIC043)

Client:
Historic Environment Scotland

Scale at A3:

Drawn by: SW	Checked by: GC	Date: 02/09/2022
-----------------	-------------------	---------------------

Report No: 4189	Fig. No: 3a - 3b
--------------------	---------------------



Key:

- Proposed downtakings
- 7 Units
- Area already demolished
- Phase 1
- Phase 3
- Phase 4
- Phase 5
- Phase 6
- Phase 7



Contains Historic Environment Scotland, Ordnance Survey and Aerial Imagery Data © Historic Environment Scotland © Crown copyright and database rights 2020 Ordnance Survey [100057073] © Getmapping

CFA
ARCHAEOLOGY LTD

The Old Engine House
Eskmills Park
Musselburgh
East Lothian, EH21 7PQ
T: 0131 273 4380
F: 0131 273 4381
enquiries@cfa-arch.co.uk
www.cfa-archaeology.co.uk

Title: Site phasing plan		
Project: Part demolition of derelict waving sheds, garage and ancillary buildings, East Range, Stanley Mills, Stanley, Perthshire (PIC043)		
Client: HES		
Scale at A3: 1:250		
Drawn by: SG	Checked by: GC	Date: 31/08/22
Report No: 1489	Fig. No: 4a	



- Key:**
- Proposed dismantlings
 - 1 Units
 - 007 Feature numbers
 - Phase 1
 - Phase 2
 - Phase 3
 - Phase 7

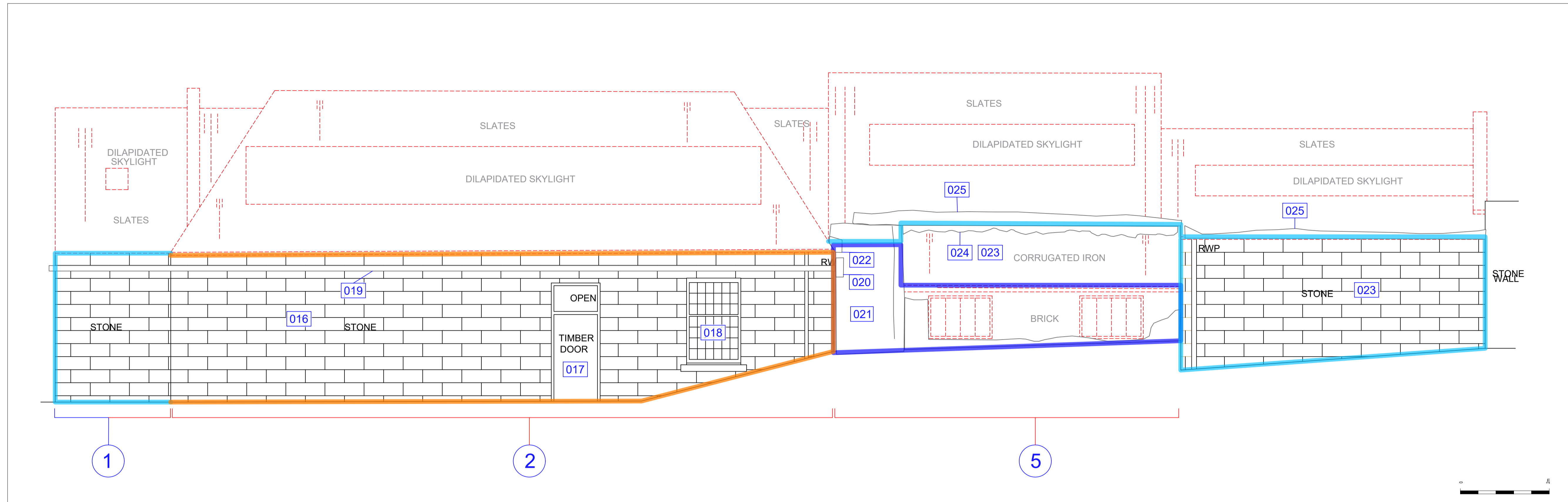


Fig.4b: Phased East-Facing Elevation

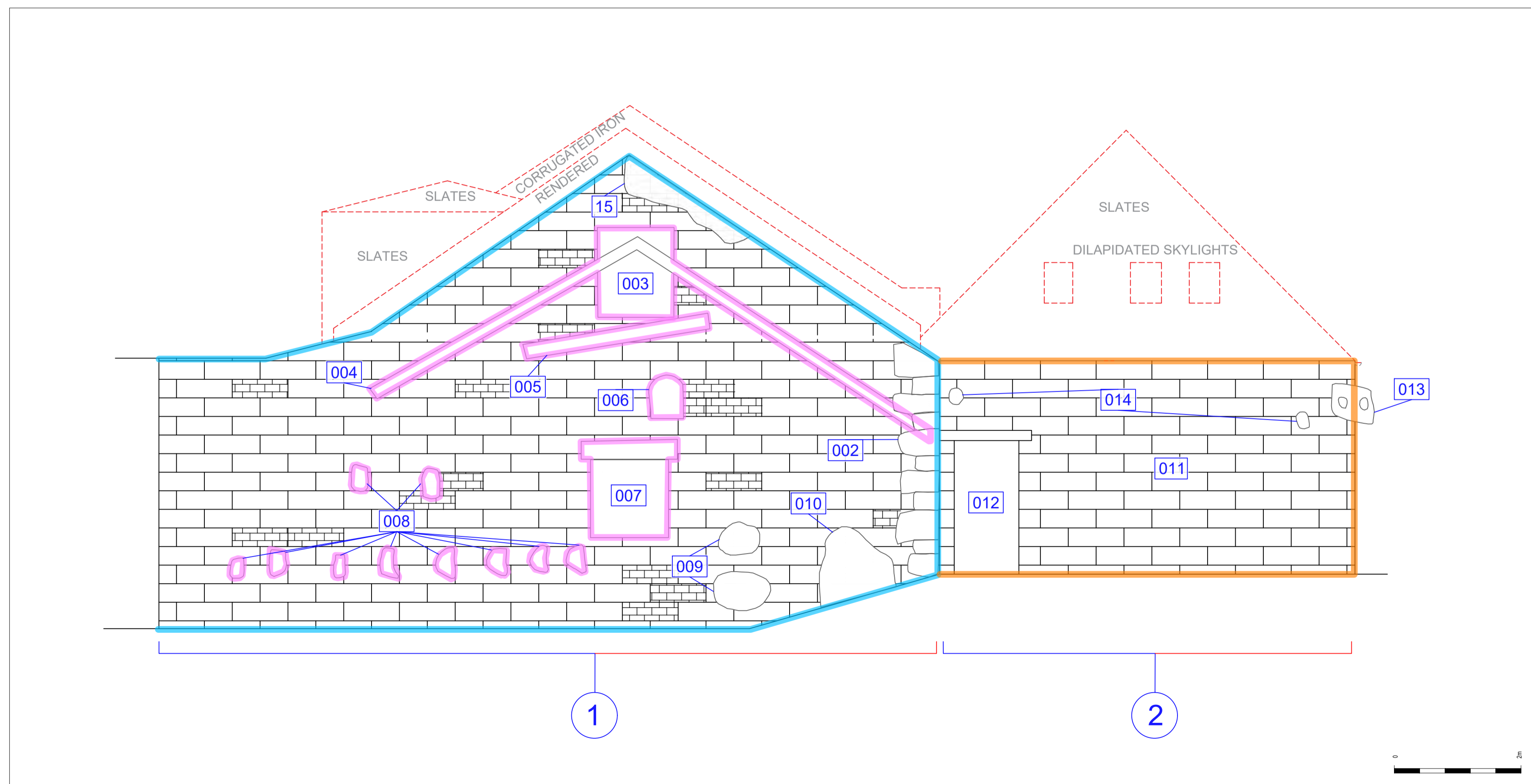


Fig.4c: Phased South-Facing Elevation

Contains Historic Environment Scotland, Ordnance Survey and Aerial Imagery Data © Historic Environment Scotland © Crown copyright and database rights 2020 Ordnance Survey 100007071 © Getmapping

CFA
ARCHAEOLOGY LTD
The Old Engine House
Lanville Way
Musselburgh, EH21 3PG
T: 0131 273 4380
F: 0131 273 4381
enquiries@cfa-arch.co.uk
www.cfa-arch.co.uk

Site phasing elevations with feature numbers

Project:
Part demolition of derelict waving sheds, garage and ancillary buildings, East Range, Stanley Mills, Stanley, Perthshire (PIC043)

Client:
HES

Scale at A3:
1:50

Drawn by: SG Checked: GC Date: 01/09/2022

Report No: 4189 Fig No: 4b-4c

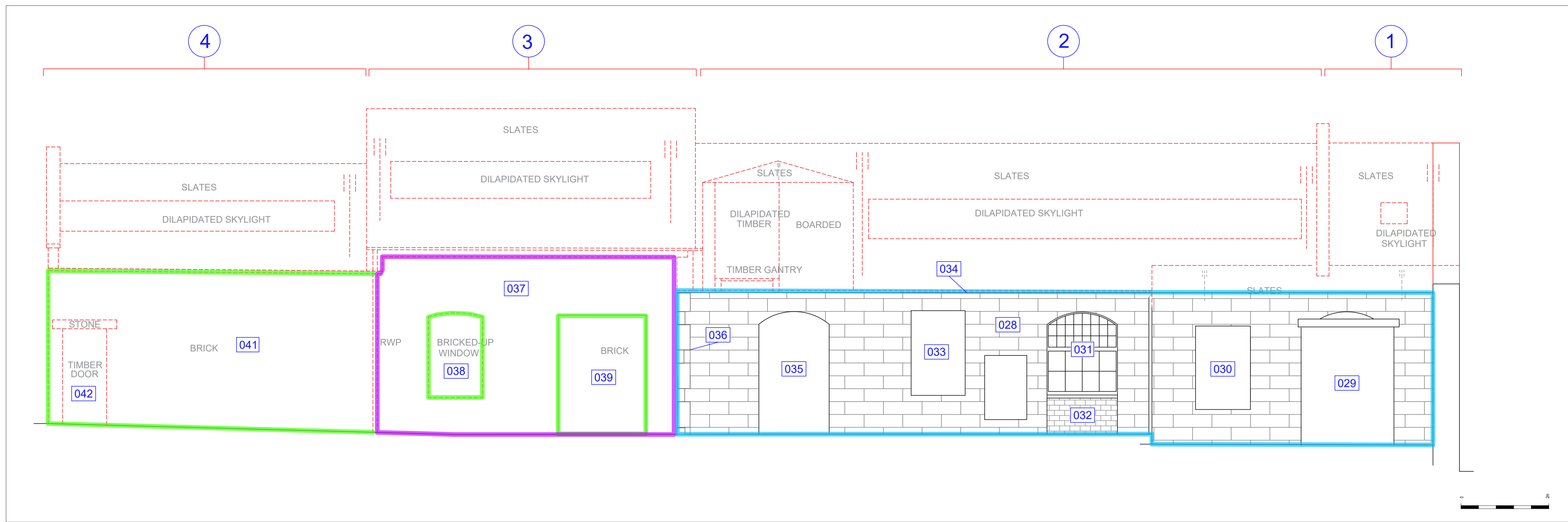


Fig.4d: Phased West-Facing Elevation

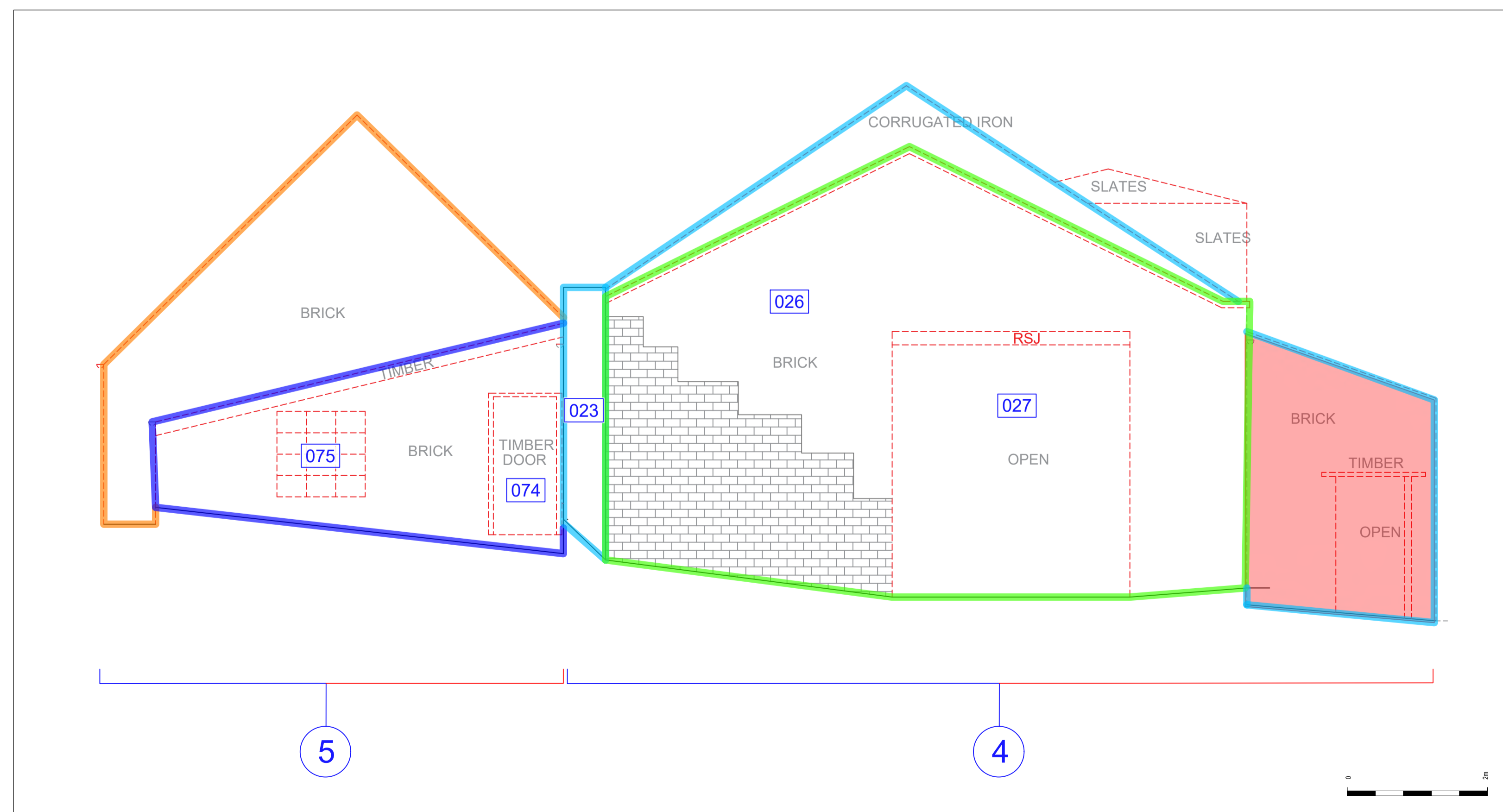


Fig.4e: Phased North-Facing Elevation

- Key:**
- Proposed down takings
 - Units
 - Feature numbers
 - Area already demolished
 - Phase 1
 - Phase 3
 - Phase 6
 - Phase 7

Contains Historic Environment Scotland, Ordnance Survey and Aerial Imagery Data © Historic Environment Scotland, © Crown copyright and database rights 2020 Ordnance Survey

CFA
ARCHAEOLOGY LTD
The Old Engine House
Lanark, East Lothian, EH21 3PG
T: 0131 273 4380
F: 0131 273 4381
enquiries@cfa-arch.co.uk
www.cfa-arch.co.uk

Title:
Site phasing elevations with feature numbers

Project:
Part demolition of derelict waving sheds, garage and ancillary buildings, East Range, Stanley Mills, Stanley, Perthshire (PIC043)

Client:
HES

Scale at A3: 1:50		
Drawn by: SG	Checked: GC	Date: 01/09/2022
Report No: 4189	Fig No: 4d-4e	

- Key:**
- Proposed dawkings
 - Units
 - Feature numbers
 - Phase 1
 - Phase 5

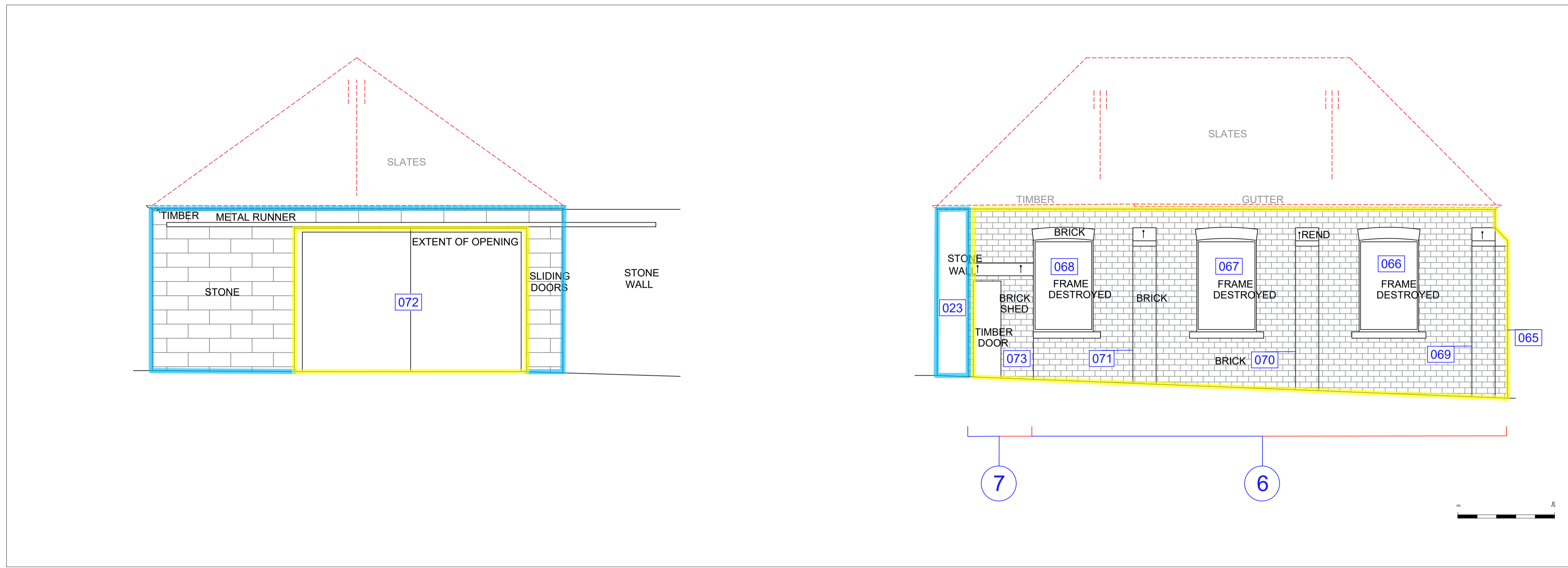


Fig.4f: Phased North-Facing Elevation

Fig.4g: Phased West-Facing Elevation

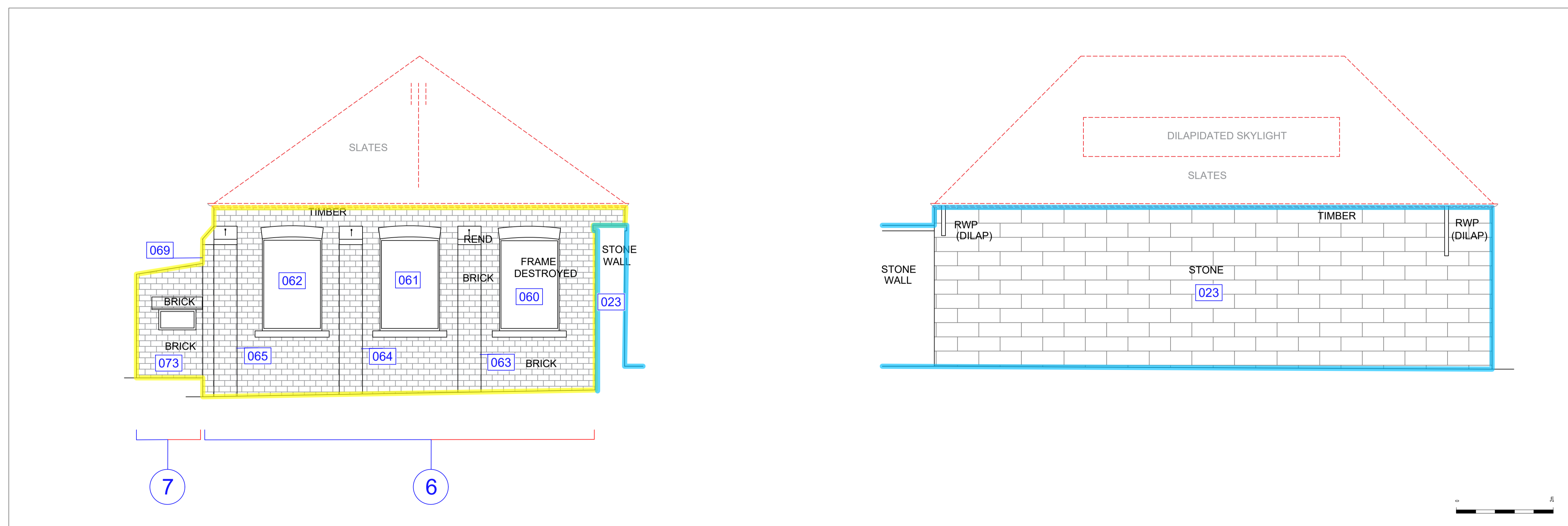


Fig.4h: Phased South-Facing Elevation

Fig.4i: Phased East-Facing Elevation



Site phasing elevations with feature numbers

Project:
Part demolition of derelict waving sheds, garage and ancillary buildings, East Range, Stanley Mills, Stanley, Perthshire (PIC043)

Client:
HES

Scale at A3: 1:50		
Drawn by: SG	Checked: GC	Date: 01/09/2022
Report No: 4189	Fig No: 4f-4i	



Fig 5: Phase 1, external west-facing elevation



Fig 6: Phase 1, detail of reused lintel on doorway (029)

Project:
Part demolition of derelict waving sheds, garage and ancillary buildings, East Range, Stanley Mills, Stanley, Perthshire (PIC043)



CFA ARCHAEOLOGY LTD
The Old Engine House
Eskmills Park
Musselburgh
East Lothian, EH21 7PQ
T: 0131 273 4380
F: 0131 273 4381
info@cfa-archaeology.co.uk
www.cfa-archaeology.co.uk

Client:
Historic Environment Scotland

Drawn by: SW	Checked: GC	Date: 03/10/22
Report No: 4189		Fig. No: 5 - 6



Fig 7: Phase 1, blocked doorway (031) and window (033)



Fig 8: Phase 1, internal north-facing elevation of Unit 1

Project:
Part demolition of derelict waving sheds, garage and ancillary buildings, East Range, Stanley Mills, Stanley, Perthshire (PIC043)



Client:
Historic Environment Scotland

Drawn by: SW	Checked: GC	Date: 03/10/22
Report No: 4189		Fig. No: 7 - 8



Fig 9: Phase 1, internal east-facing elevation of Unit 2



Fig 10: Phase 2 remains of raggle line of missing building and blocked windows (003) and (007)

Project:
Part demolition of derelict waving sheds, garage and ancillary buildings, East Range, Stanley Mills, Stanley, Perthshire (PIC043)



Client:
Historic Environment Scotland

Drawn by: SW	Checked: GC	Date: 03/10/22
Report No: 4189		Fig. No: 9 - 10



Fig 11: Phase 3 external east-facing elevation



Fig 12: Phase 3 line of internal columns supporting roof when Phase 3 removed eastern wall of Unit 2

Project:
Part demolition of derelict waving sheds, garage and ancillary buildings, East Range, Stanley Mills, Stanley, Perthshire (PIC043)

CFA
ARCHAEOLOGY LTD

CFA ARCHAEOLOGY LTD
The Old Engine House
Eskmills Park
Musselburgh
East Lothian, EH21 7PQ
T: 0131 273 4380
F: 0131 273 4381
info@cfa-archaeology.co.uk
www.cfa-archaeology.co.uk

Client:
Historic Environment Scotland

Drawn by: SW	Checked: GC	Date: 03/10/22
Report No: 4189		Fig. No: 11 - 12



Fig 13: Phase 3, internal north-facing elevation showing support bracket (057) and flywheel (058)



Fig 14: Phase 3, detail of support bracket (057) and flywheel (058)

Project:
Part demolition of derelict waving sheds, garage and ancillary buildings, East Range, Stanley Mills, Stanley, Perthshire (PIC043)



Client:
Historic Environment Scotland

Drawn by: SW	Checked: GC	Date: 03/10/22
Report No: 4189		Fig. No: 13 - 14



Fig 15: Phase 3, detail of makers name on flywheel (058)



Fig 16: Phase 3, internal east-facing elevation showing doorway (017) and window (018)

Project:
Part demolition of derelict waving sheds, garage and ancillary buildings, East Range, Stanley Mills, Stanley, Perthshire (PIC043)



Client:
Historic Environment Scotland

Drawn by: SW	Checked: GC	Date: 03/10/22
-----------------	----------------	-------------------

Report No: 4189	Fig. No: 15 - 16
--------------------	---------------------



Fig 17: Phase 4 external west-facing elevation, Unit 3, showing window (038) and doorway (039) both blocked in Phase 5



Fig 18: Phase 4 Unit 2/3, remains of brick support column (053) for roof support I beam

Project:
Part demolition of derelict waving sheds, garage and ancillary buildings, East Range, Stanley Mills, Stanley, Perthshire (PIC043)



CFA ARCHAEOLOGY LTD
The Old Engine House
Eskmills Park
Musselburgh
East Lothian, EH21 7PQ
T: 0131 273 4380
F: 0131 273 4381
info@cfa-archaeology.co.uk
www.cfa-archaeology.co.uk

Client:
Historic Environment Scotland

Drawn by: SW	Checked: GC	Date: 03/10/22
Report No: 4189		Fig. No: 17 - 18



Fig 19: Phase 4 Unit 2/3, remains of brick support column (054) for roof support I beam



Fig 20: Phase 5, Garage, Unit 6, external south-facing elevation

Project:
Part demolition of derelict waving sheds, garage and ancillary buildings, East Range, Stanley Mills, Stanley, Perthshire (PIC043)



CFA ARCHAEOLOGY LTD
The Old Engine House
Eskmills Park
Musselburgh
East Lothian, EH21 7PQ
T: 0131 273 4380
F: 0131 273 4381
info@cfa-archaeology.co.uk
www.cfa-archaeology.co.uk

Client:
Historic Environment Scotland

Drawn by: SW	Checked: GC	Date: 03/10/22
Report No: 4189		Fig. No: 19 - 20



Fig 21: Phase 5, Garage, Unit 6, external west-facing elevation



Fig 22: Phase 5, Garage, Unit 6, external north-facing elevation with double door (072)

Project:
Part demolition of derelict waving sheds, garage and ancillary buildings, East Range, Stanley Mills, Stanley, Perthshire (PIC043)



CFA ARCHAEOLOGY LTD
The Old Engine House
Eskmills Park
Musselburgh
East Lothian, EH21 7PQ
T: 0131 273 4380
F: 0131 273 4381
info@cfa-archaeology.co.uk
www.cfa-archaeology.co.uk

Client:
Historic Environment Scotland

Drawn by: SW	Checked: GC	Date: 03/10/22
Report No: 4189		Fig. No: 21 - 22



Fig 23: Phase 5, Garage, Unit 6, vehicle inspection pit



Fig 24: Phase 5 toilet, Unit 7 next to Garage

Project:
Part demolition of derelict waving sheds, garage and ancillary buildings, East Range, Stanley Mills, Stanley, Perthshire (PIC043)



CFA ARCHAEOLOGY LTD
The Old Engine House
Eskmills Park
Musselburgh
East Lothian, EH21 7PQ
T: 0131 273 4380
F: 0131 273 4381
info@cfa-archaeology.co.uk
www.cfa-archaeology.co.uk

Client:
Historic Environment Scotland

Drawn by: SW	Checked: GC	Date: 03/10/22
Report No: 4189		Fig. No: 23 - 24



Fig 25: Phase 6 external west-facing elevation, Unit 4, showing doorway (042)



Fig 26: Phase 6 external north-facing elevation, Unit 4, showing doorway (027)

Project:
Part demolition of derelict waving sheds, garage and ancillary buildings, East Range, Stanley Mills, Stanley, Perthshire (PIC043)



CFA ARCHAEOLOGY LTD
The Old Engine House
Eskmills Park
Musselburgh
East Lothian, EH21 7PQ
T: 0131 273 4380
F: 0131 273 4381
info@cfa-archaeology.co.uk
www.cfa-archaeology.co.uk

Client:
Historic Environment Scotland

Drawn by: SW	Checked: GC	Date: 03/10/22
Report No: 4189		Fig. No: 25 - 26



Fig 27: Phase 7 Unit 5, external east and north-facing elevations showing damage caused by vandalism and raggle line for sloping corrugated roof



Fig 28: Site post partial demolition

Project:
Part demolition of derelict waving sheds, garage and ancillary buildings, East Range, Stanley Mills, Stanley, Perthshire (PIC043)



CFA ARCHAEOLOGY LTD
The Old Engine House
Eskmills Park
Musselburgh
East Lothian, EH21 7PQ
T: 0131 273 4380
F: 0131 273 4381
info@cfa-archaeology.co.uk
www.cfa-archaeology.co.uk

Client:
Historic Environment Scotland

Drawn by: SW	Checked: GC	Date: 03/10/22
Report No: 4189		Fig. No: 27 - 28

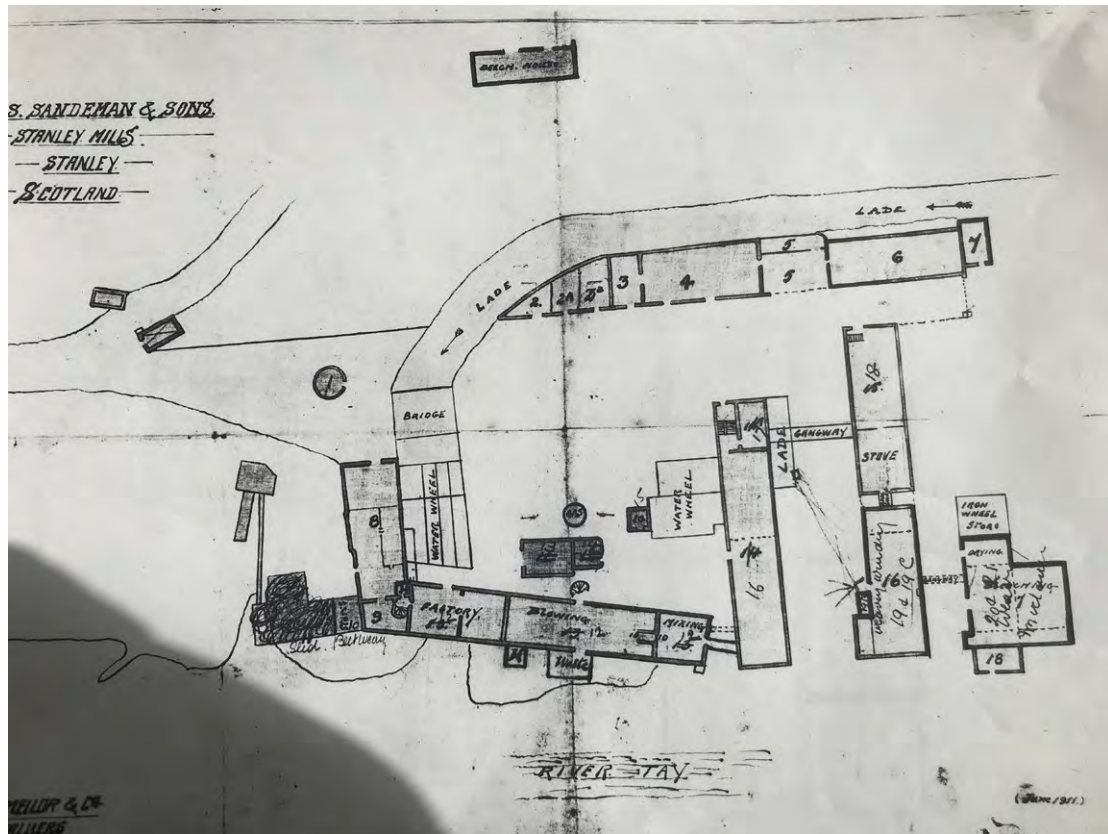


Fig 29: Insurance map of site from 1911 with buildings functions labelled



Fig 30: I beams salvaged from demolition

Project:
Part demolition of derelict waving sheds, garage and ancillary buildings, East Range, Stanley Mills, Stanley, Perthshire (PIC043)



CFA ARCHAEOLOGY LTD
The Old Engine House
Eskmills Park
Musselburgh
East Lothian, EH21 7PQ
T: 0131 273 4380
F: 0131 273 4381
info@cfa-archaeology.co.uk
www.cfa-archaeology.co.uk

Client:
Historic Environment Scotland

Drawn by: SW	Checked: GC	Date: 03/10/22
Report No: 4189		Fig. No: 29 - 30



Fig 31: The Phase 1 cast columns salvaged from the demolition of Unit 2



Fig 32: Detail of the heads of the Phase 1 cast columns salvaged from the demolition of Unit 2

Project:
Part demolition of derelict waving sheds, garage and ancillary buildings, East Range, Stanley Mills, Stanley, Perthshire (PIC043)



CFA ARCHAEOLOGY LTD
The Old Engine House
Eskmills Park
Musselburgh
East Lothian, EH21 7PQ
T: 0131 273 4380
F: 0131 273 4381
info@cfa-archaeology.co.uk
www.cfa-archaeology.co.uk

Client:
Historic Environment Scotland

Drawn by: SW	Checked: GC	Date: 03/10/22
Report No: 4189		Fig. No: 31 - 32



Fig 33: The Phase 1 metal roof trusses salvaged from the demolition of Unit 2



Fig 34: Detail of the Phase 1 metal roof trusses salvaged from the demolition of Unit 2 showing where they would have bolted onto a ridge beam

Project:
Part demolition of derelict waving sheds, garage and ancillary buildings, East Range, Stanley Mills, Stanley, Perthshire (PIC043)



Client:
Historic Environment Scotland

Drawn by: SW	Checked: GC	Date: 03/10/22
Report No: 4189		Fig. No: 33 - 34



Fig 5: Phase 1, external west-facing elevation



Fig 6: Phase 1, detail of reused lintel on doorway (029)

Project:
Part demolition of derelict waving sheds, garage and ancillary buildings, East Range, Stanley Mills, Stanley, Perthshire (PIC043)



CFA ARCHAEOLOGY LTD
The Old Engine House
Eskmills Park
Musselburgh
East Lothian, EH21 7PQ
T: 0131 273 4380
F: 0131 273 4381
info@cfa-archaeology.co.uk
www.cfa-archaeology.co.uk

Client:
Historic Environment Scotland

Drawn by: SW	Checked: GC	Date: 03/10/22
Report No: 4189		Fig. No: 5 - 6



Fig 7: Phase 1, blocked doorway (031) and window (033)



Fig 8: Phase 1, internal north-facing elevation of Unit 1

Project:
Part demolition of derelict waving sheds, garage and ancillary buildings, East Range, Stanley Mills, Stanley, Perthshire (PIC043)



Client:
Historic Environment Scotland

Drawn by: SW	Checked: GC	Date: 03/10/22
Report No: 4189		Fig. No: 7 - 8



Fig 9: Phase 1, internal east-facing elevation of Unit 2



Fig 10: Phase 2 remains of raggle line of missing building and blocked windows (003) and (007)

Project:
Part demolition of derelict waving sheds, garage and ancillary buildings, East Range, Stanley Mills, Stanley, Perthshire (PIC043)



CFA ARCHAEOLOGY LTD
The Old Engine House
Eskmills Park
Musselburgh
East Lothian, EH21 7PQ
T: 0131 273 4380
F: 0131 273 4381
info@cfa-archaeology.co.uk
www.cfa-archaeology.co.uk

Client:
Historic Environment Scotland

Drawn by: SW	Checked: GC	Date: 03/10/22
Report No: 4189		Fig. No: 9 - 10



Fig 11: Phase 3 external east-facing elevation



Fig 12: Phase 3 line of internal columns supporting roof when Phase 3 removed eastern wall of Unit 2

Project:
Part demolition of derelict waving sheds, garage and ancillary buildings, East Range, Stanley Mills, Stanley, Perthshire (PIC043)

CFA
ARCHAEOLOGY LTD

CFA ARCHAEOLOGY LTD
The Old Engine House
Eskmills Park
Musselburgh
East Lothian, EH21 7PQ
T: 0131 273 4380
F: 0131 273 4381
info@cfa-archaeology.co.uk
www.cfa-archaeology.co.uk

Client:
Historic Environment Scotland

Drawn by: SW	Checked: GC	Date: 03/10/22
Report No: 4189		Fig. No: 11 - 12



Fig 13: Phase 3, internal north-facing elevation showing support bracket (057) and flywheel (058)



Fig 14: Phase 3, detail of support bracket (057) and flywheel (058)

Project:
Part demolition of derelict waving sheds, garage and ancillary buildings, East Range, Stanley Mills, Stanley, Perthshire (PIC043)

CFA
ARCHAEOLOGY LTD
CFA ARCHAEOLOGY LTD
The Old Engine House
Eskmills Park
Musselburgh
East Lothian, EH21 7PQ
T: 0131 273 4380
F: 0131 273 4381
info@cfa-archaeology.co.uk
www.cfa-archaeology.co.uk

Client:
Historic Environment Scotland

Drawn by: SW	Checked: GC	Date: 03/10/22
Report No: 4189		Fig. No: 13 - 14



Fig 15: Phase 3, detail of makers name on flywheel (058)



Fig 16: Phase 3, internal east-facing elevation showing doorway (017) and window (018)

Project:
Part demolition of derelict waving sheds, garage and ancillary buildings, East Range, Stanley Mills, Stanley, Perthshire (PIC043)



Client:
Historic Environment Scotland

Drawn by: SW	Checked: GC	Date: 03/10/22
Report No: 4189		Fig. No: 15 - 16



Fig 17: Phase 4 external west-facing elevation, Unit 3, showing window (038) and doorway (039) both blocked in Phase 5



Fig 18: Phase 4 Unit 2/3, remains of brick support column (053) for roof support I beam

Project:
Part demolition of derelict waving sheds, garage and ancillary buildings, East Range, Stanley Mills, Stanley, Perthshire (PIC043)



CFA ARCHAEOLOGY LTD
The Old Engine House
Eskmills Park
Musselburgh
East Lothian, EH21 7PQ
T: 0131 273 4380
F: 0131 273 4381
info@cfa-archaeology.co.uk
www.cfa-archaeology.co.uk

Client:
Historic Environment Scotland

Drawn by: SW	Checked: GC	Date: 03/10/22
Report No: 4189		Fig. No: 17 - 18



Fig 19: Phase 4 Unit 2/3, remains of brick support column (054) for roof support I beam



Fig 20: Phase 5, Garage, Unit 6, external south-facing elevation

Project:
Part demolition of derelict waving sheds, garage and ancillary buildings, East Range, Stanley Mills, Stanley, Perthshire (PIC043)



Client:
Historic Environment Scotland

Drawn by: SW	Checked: GC	Date: 03/10/22
Report No: 4189		Fig. No: 19 - 20



Fig 21: Phase 5, Garage, Unit 6, external west-facing elevation



Fig 22: Phase 5, Garage, Unit 6, external north-facing elevation with double door (072)

Project:
Part demolition of derelict waving sheds, garage and ancillary buildings, East Range, Stanley Mills, Stanley, Perthshire (PIC043)



CFA ARCHAEOLOGY LTD
The Old Engine House
Eskmills Park
Musselburgh
East Lothian, EH21 7PQ
T: 0131 273 4380
F: 0131 273 4381
info@cfa-archaeology.co.uk
www.cfa-archaeology.co.uk

Client:
Historic Environment Scotland

Drawn by: SW	Checked: GC	Date: 03/10/22
Report No: 4189		Fig. No: 21 - 22



Fig 23: Phase 5, Garage, Unit 6, vehicle inspection pit



Fig 24: Phase 5 toilet, Unit 7 next to Garage

Project:
Part demolition of derelict waving sheds, garage and ancillary buildings, East Range, Stanley Mills, Stanley, Perthshire (PIC043)



CFA ARCHAEOLOGY LTD
The Old Engine House
Eskmills Park
Musselburgh
East Lothian, EH21 7PQ
T: 0131 273 4380
F: 0131 273 4381
info@cfa-archaeology.co.uk
www.cfa-archaeology.co.uk

Client:
Historic Environment Scotland

Drawn by: SW	Checked: GC	Date: 03/10/22
Report No: 4189		Fig. No: 23 - 24



Fig 25: Phase 6 external west-facing elevation, Unit 4, showing doorway (042)



Fig 26: Phase 6 external north-facing elevation, Unit 4, showing doorway (027)

Project:
Part demolition of derelict waving sheds, garage and ancillary buildings, East Range, Stanley Mills, Stanley, Perthshire (PIC043)



CFA ARCHAEOLOGY LTD
The Old Engine House
Eskmills Park
Musselburgh
East Lothian, EH21 7PQ
T: 0131 273 4380
F: 0131 273 4381
info@cfa-archaeology.co.uk
www.cfa-archaeology.co.uk

Client:
Historic Environment Scotland

Drawn by: SW	Checked: GC	Date: 03/10/22
Report No: 4189		Fig. No: 25 - 26



Fig 27: Phase 7 Unit 5, external east and north-facing elevations showing damage caused by vandalism and raggle line for sloping corrugated roof



Fig 28: Site post partial demolition

Project:
Part demolition of derelict waving sheds, garage and ancillary buildings, East Range, Stanley Mills, Stanley, Perthshire (PIC043)



CFA ARCHAEOLOGY LTD
The Old Engine House
Eskmills Park
Musselburgh
East Lothian, EH21 7PQ
T: 0131 273 4380
F: 0131 273 4381
info@cfa-archaeology.co.uk
www.cfa-archaeology.co.uk

Client:
Historic Environment Scotland

Drawn by: SW	Checked: GC	Date: 03/10/22
Report No: 4189		Fig. No: 27 - 28

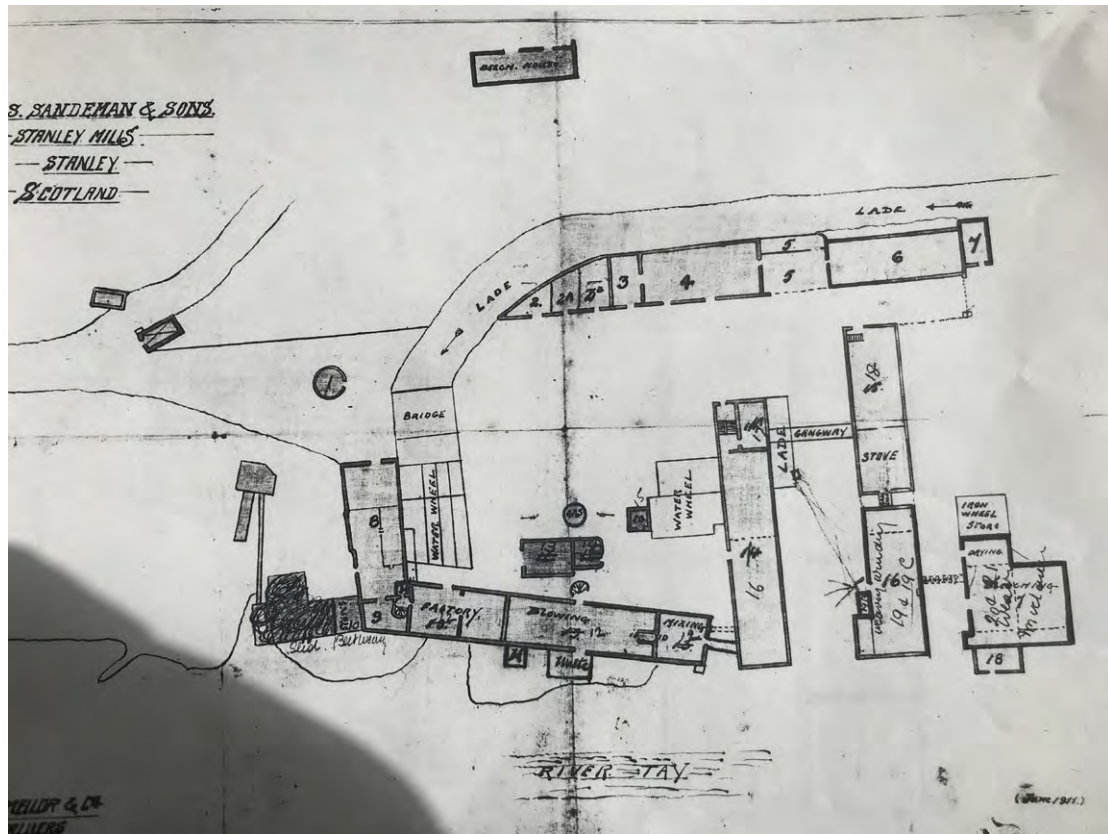


Fig 29: Insurance map of site from 1911 with buildings functions labelled



Fig 30: I beams salvaged from demolition

Project:
Part demolition of derelict waving sheds, garage and ancillary buildings, East Range, Stanley Mills, Stanley, Perthshire (PIC043)



CFA ARCHAEOLOGY LTD
The Old Engine House
Eskmills Park
Musselburgh
East Lothian, EH21 7PQ
T: 0131 273 4380
F: 0131 273 4381
info@cfa-archaeology.co.uk
www.cfa-archaeology.co.uk

Client:
Historic Environment Scotland

Drawn by: SW	Checked: GC	Date: 03/10/22
Report No: 4189		Fig. No: 29 - 30



Fig 31: The Phase 1 cast columns salvaged from the demolition of Unit 2



Fig 32: Detail of the heads of the Phase 1 cast columns salvaged from the demolition of Unit 2

Project:
Part demolition of derelict waving sheds, garage and ancillary buildings, East Range, Stanley Mills, Stanley, Perthshire (PIC043)



CFA ARCHAEOLOGY LTD
The Old Engine House
Eskmills Park
Musselburgh
East Lothian, EH21 7PQ
T: 0131 273 4380
F: 0131 273 4381
info@cfa-archaeology.co.uk
www.cfa-archaeology.co.uk

Client:
Historic Environment Scotland

Drawn by: SW	Checked: GC	Date: 03/10/22
Report No: 4189		Fig. No: 31 - 32



Fig 33: The Phase 1 metal roof trusses salvaged from the demolition of Unit 2



Fig 34: Detail of the Phase 1 metal roof trusses salvaged from the demolition of Unit 2 showing where they would have bolted onto a ridge beam

Project:
Part demolition of derelict waving sheds, garage and ancillary buildings, East Range, Stanley Mills, Stanley, Perthshire (PIC043)

CFA
ARCHAEOLOGY LTD

CFA ARCHAEOLOGY LTD
The Old Engine House
Eskmills Park
Musselburgh
East Lothian, EH21 7PQ
T: 0131 273 4380
F: 0131 273 4381
info@cfa-archaeology.co.uk
www.cfa-archaeology.co.uk

Client:
Historic Environment Scotland

Drawn by: SW	Checked: GC	Date: 03/10/22
Report No: 4189		Fig. No: 33 - 34



HES-PIC043-2022-0...



HES-PIC043-2022-0...



HES-PIC043-2022-0...



HES-PIC043-2022-0...



HES-PIC043-2022-0...



HES-PIC043-2022-0...



HES-PIC043-2022-0...



HES-PIC043-2022-0...



HES-PIC043-2022-0...



HES-PIC043-2022-0...



HES-PIC043-2022-0...



HES-PIC043-2022-0...



HES-PIC043-2022-0...



HES-PIC043-2022-0...



HES-PIC043-2022-0...



HES-PIC043-2022-0...



HES-PIC043-2022-0...



HES-PIC043-2022-0...



HES-PIC043-2022-0...



HES-PIC043-2022-0...



HES-PIC043-2022-0...



HES-PIC043-2022-0...



HES-PIC043-2022-0...



HES-PIC043-2022-0...



HES-PIC043-2022-0...



HES-PIC043-2022-0...



HES-PIC043-2022-0...



HES-PIC043-2022-0...



HES-PIC043-2022-0...



HES-PIC043-2022-0...



HES-PIC043-2022-0...



HES-PIC043-2022-0...



HES-PIC043-2022-0...



HES-PIC043-2022-0...



HES-PIC043-2022-0...



HES-PIC043-2022-0...



HES-PIC043-2022-0...



HES-PIC043-2022-0...



HES-PIC043-2022-0...



HES-PIC043-2022-0...



HES-PIC043-2022-0...



HES-PIC043-2022-0...



HES-PIC043-2022-0...



HES-PIC043-2022-0...



HES-PIC043-2022-0...



HES-PIC043-2022-0...



HES-PIC043-2022-0...



HES-PIC043-2022-0...



HES-PIC043-2022-0...



HES-PIC043-2022-0...



HES-PIC043-2022-0...



HES-PIC043-2022-0...



HES-PIC043-2022-0...



HES-PIC043-2022-0...



HES-PIC043-2022-0...



HES-PIC043-2022-0...



HES-PIC043-2022-0...



HES-PIC043-2022-0...



HES-PIC043-2022-0...



HES-PIC043-2022-0...



HES-PIC043-2022-0...



HES-PIC043-2022-0...



HES-PIC043-2022-0...



HES-PIC043-2022-0...



HES-PIC043-2022-0...



HES-PIC043-2022-0...



HES-PIC043-2022-0...



HES-PIC043-2022-0...



HES-PIC043-2022-0...



HES-PIC043-2022-0...



HES-PIC043-2022-0...



HES-PIC043-2022-0...



HES-PIC043-2022-0...



HES-PIC043-2022-0...



HES-PIC043-2022-0...



HES-PIC043-2022-0...



HES-PIC043-2022-0...



HES-PIC043-2022-0...



HES-PIC043-2022-0...



HES-PIC043-2022-0...



HES-PIC043-2022-0...



HES-PIC043-2022-0...



HES-PIC043-2022-0...



HES-PIC043-2022-0...



HES-PIC043-2022-0...



HES-PIC043-2022-0...



HES-PIC043-2022-0...



HES-PIC043-2022-0...



HES-PIC043-2022-0...



HES-PIC043-2022-0...



HES-PIC043-2022-0...



HES-PIC043-2022-0...



HES-PIC043-2022-0...



HES-PIC043-2022-0...



HES-PIC043-2022-0...



HES-PIC043-2022-0...



HES-PIC043-2022-0...



HES-PIC043-2022-0...



HES-PIC043-2022-0...



HES-PIC043-2022-0...



HES-PIC043-2022-0...



HES-PIC043-2022-0...



HES-PIC043-2022-0...



HES-PIC043-2022-0...



HES-PIC043-2022-0...



HES-PIC043-2022-0...



HES-PIC043-2022-0...



HES-PIC043-2022-0...



HES-PIC043-2022-0...



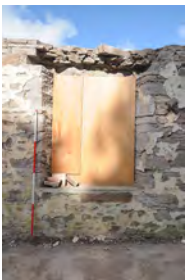
HES-PIC043-2022-0...



HES-PIC043-2022-0...



HES-PIC043-2022-0...



HES-PIC043-2022-0...



HES-PIC043-2022-0...



HES-PIC043-2022-0...



HES-PIC043-2022-0...



HES-PIC043-2022-0...



HES-PIC043-2022-0...



HES-PIC043-2022-0...



HES-PIC043-2022-0...



HES-PIC043-2022-0...



HES-PIC043-2022-0...



HES-PIC043-2022-0...



HES-PIC043-2022-0...



HES-PIC043-2022-0...



HES-PIC043-2022-0...



HES-PIC043-2022-0...



HES-PIC043-2022-0...



HES-PIC043-2022-0...



HES-PIC043-2022-0...



HES-PIC043-2022-0...



HES-PIC043-2022-0...



HES-PIC043-2022-0...



HES-PIC043-2022-0...



HES-PIC043-2022-0...



HES-PIC043-2022-0...



HES-PIC043-2022-0...



HES-PIC043-2022-0...



HES-PIC043-2022-0...



HES-PIC043-2022-0...



HES-PIC043-2022-0...



HES-PIC043-2022-0...



HES-PIC043-2022-0...



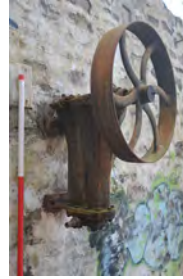
HES-PIC043-2022-0...



HES-PIC043-2022-0...



HES-PIC043-2022-0...



HES-PIC043-2022-0...



HES-PIC043-2022-0...



HES-PIC043-2022-0...



HES-PIC043-2022-0...



HES-PIC043-2022-0...



HES-PIC043-2022-0...



HES-PIC043-2022-0...



HES-PIC043-2022-0...



HES-PIC043-2022-0...



HES-PIC043-2022-0...



HES-PIC043-2022-0...



HES-PIC043-2022-0...



HES-PIC043-2022-0...



HES-PIC043-2022-0...



HES-PIC043-2022-0...



HES-PIC043-2022-0...



HES-PIC043-2022-0...



HES-PIC043-2022-0...



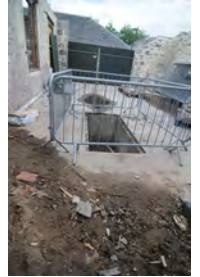
HES-PIC043-2022-0...



HES-PIC043-2022-0...



HES-PIC043-2022-0...



HES-PIC043-2022-0...



HES-PIC043-2022-0...



HES-PIC043-2022-0...



HES-PIC043-2022-0...



HES-PIC043-2022-0...



HES-PIC043-2022-0...



HES-PIC043-2022-0...



HES-PIC043-2022-0...



HES-PIC043-2022-0...



HES-PIC043-2022-0...



HES-PIC043-2022-0...



HES-PIC043-2022-0...



HES-PIC043-2022-0...



HES-PIC043-2022-0...



HES-PIC043-2022-0...



HES-PIC043-2022-0...



HES-PIC043-2022-0...



HES-PIC043-2022-0...



HES-PIC043-2022-0...



HES-PIC043-2022-0...



HES-PIC043-2022-0...



HES-PIC043-2022-0...



HES-PIC043-2022-0...



HES-PIC043-2022-0...



HES-PIC043-2022-0...



HES-PIC043-2022-0...



HES-PIC043-2022-0...



HES-PIC043-2022-0...



HES-PIC043-2022-0...



HES-PIC043-2022-0...



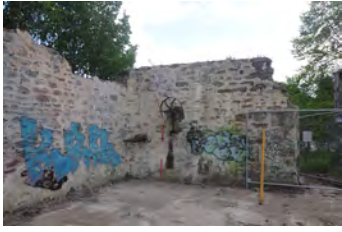
HES-PIC043-2022-0...



HES-PIC043-2022-0...



HES-PIC043-2022-0...



HES-PIC043-2022-0...



CFA ARCHAEOLOGY
www.cfa-archaeology.co.uk

HEAD OFFICE - Musselburgh

Old Engine House
Eskmills Park, Musselburgh
East Lothian, EH21 7PQ

t: +44 (0) 131 273 4380
e: enquiries@cfa-arch.co.uk

Leeds

Clayton Works Business Centre
Midland Road
Leeds, LS10 2RJ

t: +44 (0) 113 271 6060
e: yorkshire@cfa-arch.co.uk

Milton Keynes

Suite 11, Letchworth House
Chesney Wold, Bleak Hall
Milton Keynes, MK6 1NE

t: +44 (0) 1908 226 124
e: miltonkeynes@cfa-arch.co.uk

Carlisle

Warwick Mill Business Village
Warwick Bridge, Carlisle
Cumbria, CA4 8RR

t: +44 (0) 1228 564 531
e: cumbria@cfa-arch.co.uk

Sheffield

Office 5, Ecclesfield Business Centre
46 Stocks Hill, Ecclesfield
Sheffield, S35 9YT

t: +44 (0) 114 327 1108
e: sheffield@cfa-arch.co.uk

Leicester

Business Box
3 Oswin Road, Brailsford Industrial Estate
Leicester, LE3 1HR

t: +44 (0) 116 279 5156
e: leicestershire@cfa-arch.co.uk

Hertfordshire

Amwell House
9 Amwell Street, Hoddesdon
Hertfordshire, EN11 8TS

t: +44 (0) 845 017 9847
e: herts@cfa-arch.co.uk