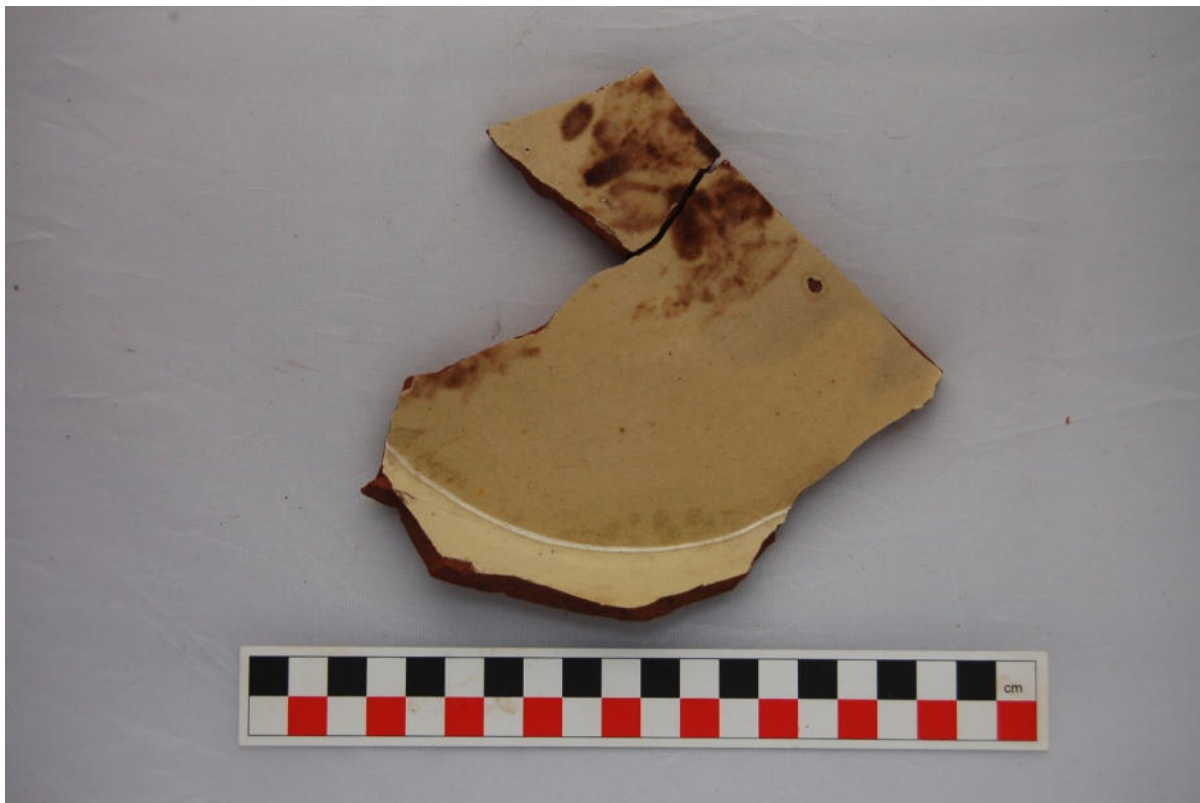


17-19 High Street, Fraserburgh, Aberdeenshire, AB43 9AP

Report on Archaeological Watching Brief

Aberdeenshire Council Planning Application APP/2020/0954



Moyra Simon

Cameron Archaeology

28 October 2021

CONTENTS

1	BACKGROUND	4
2	ARCHAEOLOGICAL BACKGROUND	5
3	WATCHING BRIEF	6
3.1	The Structure.....	6
3.2	The Groundworks	9
3.2.1	Trench 1.....	10
3.2.2	Trench 2.....	13
3.2.3	Trench 3.....	14
3.2.4	Trench 4.....	15
4	CONCLUSIONS.....	19
5	ACKNOWLEDGMENTS.....	19
6	REFERENCES	19
	APPENDIX 1 CONTEXTS	20
	APPENDIX 2 PHOTOGRAPHS	20

ILLUSTRATIONS

Front: Base of a redware bowl recovered from Trench 1

Illus 1	Location plan (Contains Ordnance Survey data © Crown copyright and database right 2021)	4
Illus 2	WNW facing elevation within the front existing retail space; facing ESE.	6
Illus 3	N-most hearth infilled with stone rubble within the ESE wall; facing ESE.	7
Illus 4	S-most hearth within the ESE wall; facing ESE.....	7
Illus 5	Sleeper walls exposed by removal of floorboards within the retail space fronting onto High Street; facing S.	8
Illus 6	Window (L) and doorway (R) with ashlar dressed surrounds in the rear wall of the earlier building; facing NE.	8
Illus 7	Working shot showing the modern cement block extension built onto the earlier granite structure of the ESE wall; facing ESE.....	9
Illus 8	Site plan showing proposed development with trenches marked in red (copyright NB Planning and Architecture).....	10
Illus 9	Section of drain located within Trench 1; facing E.....	11
Illus 10	Possible worked bone artefact recovered from Trench 1.	11
Illus 11	Selection of glass (top L) and ceramic sherds recovered from Trench 1.	12
Illus 12	Clay pipe bowl stamped with the maker's mark "BALME MILE END" recovered from Trench 1.....	12
Illus 13	Foundation of the N wall of the structure fronting onto the High Street, beneath the frame of a modern floor-to-ceiling window; facing N.	13
Illus 14	WNW facing section through the N wall of the structure fronting onto the High Street; facing ESE.	13
Illus 15	Working shot of Trench 3 showing the granite foundation of the N wall supporting an I-beam and window above; facing N.	14
Illus 16	Rear face of cut granite stones facing the N wall of the building revealed by removal of a rough foundation stone from beneath the I-beam; facing N.	14
Illus 17	Flint beach pebble recovered from Test Pit 1.	15
Illus 18	Plan of Trench 4 as observed during the Watching Brief. Test Pits are marked with dashed lines as 1 & 3 were completely removed and 2 partially removed by subsequent excavation.....	16

Illus 19 N Facing section of the sondage toward the E end of Trench 4.	17
Illus 20 Profile across the E end of Trench 4 (including sondage) following excavation of made ground on the S side of modern cement block wall.	18
Illus 21 Exterior glazed (A) and interior unglazed (B) sherds of green glazed medieval pottery of dark grey fabric.	19

SUMMARY

Moyra Simon of Cameron Archaeology carried out a watching brief over groundbreaking works on 02 August 2021 and 20 October 2021. Four trenches were cut which exposed some structural elements of the earlier parts of the building including the foundation of the N- most wall, two hearths and sleeper walls which had supported the internal floor. Though a quantity of domestic refuse was recovered, including two sherds of medieval pottery, no archaeological features were identified.

1 BACKGROUND

- 1.1 The site (Illus 1) is located on the S side of High Street, Fraserburgh. It is centred on NGR NJ 99732 67082, at 10-15m OD in the parish of Fraserburgh.
- 1.2 The work was commissioned by NB Planning and Architecture. An application APP/2020/0954 for repairs to a shop frontage was approved on 27 July 2020 with requirement for a watching brief over all groundbreaking works.
- 1.3 All the archaeological was carried out in the context of Scottish Planning Policy (SPP) Planning Advice Note (PAN 2/2011) and Historic Environment Policy Scotland (HEPS) which state that archaeological remains should be regarded as part of the environment to be protected and managed.



Illus 1 Location plan (Contains Ordnance Survey data © Crown copyright and database right 2021).

2 ARCHAEOLOGICAL BACKGROUND

The Historic Environment Record (HER) and Canmore (HES) were consulted online within 0.5km of the proposed development.

- 2.1 There are no Scheduled Monuments within 1km of the proposed development. The property to be converted are on High Street (formerly Back Street) a Tenement (HER NJ96NE0276), with ground floor retail unit. It is 2-storey with attic, of granite with a slate roof.
- 2.2 The historic core of Fraserburgh (HER NJ96NE0078); it was founded in 1546 as a burgh of barony of the Frasers of Philorth. The castle (NJ96NE0006) at Kinnaird Head was built by the Fraser family by 1570. By the 1590s a small harbour (NK06NW0008) was developed in the area known as Faithlie. In 1592 Faithlie was renamed Fraserburgh by a charter under King James VI. Sir Alexander Fraser was given permission to improve and govern the town as Lord Saltoun. Following a grant from the Scottish Parliament in 1595 the first college was erected by Alexander Fraser, although the college closed in the early 17th century, being used again only for a short period in 1647 when King's College, Aberdeen temporarily relocated following an outbreak of the plague. In 1601 Fraserburgh became a burgh of regality. Population varied with peaks in seasonal employment: in 1780 the population of the town was c.2000, of which only 1000 resided in the town. The railway station opened in 1865, but closed in 1965.
- 2.3 High Street is lined with tenements and shops. 12-14 High Street (HER NJ96NE0277) is a Corner property shown on the OS 1st edition map as two rectangular properties, the western one narrower than the eastern one. The OS 2nd edition map shows the property as one rectangular building. Currently, the ground floor is in use as a shop.
- 2.4 At the E end of the street is the marketplace with Market cross (HER NJ96NE0007), erected in the early 17th Century. In 1858 only the shaft remained and that had been moved from the east side of the square, where it once stood on the hexagonal basement, to the centre of the square. The former position could not be established. The supporting base for the cross was built in 1997 as part of the Fraserburgh Central Area improvements, when the position of the cross was moved. The shaft and upper part are old. The finial was replaced in 1988. The shaft bears the inscriptions 'LAS' and the date '1736'. The decorative finial to the cross bears the Royal Arms of Scotland on the North side surrounded by the insignia of the Order of St Andrew. On the South are the Royal Arms of the United Kingdom surrounded by the insignia of the Order of the Garter. The south of the shaft bears the burgh arms of Fraserburgh and the north the burgh arms of Faithlie.
- 2.5 At the E end of the street was the location of the Temperance fountain (HER NJ96NE0098), no longer in use as a fountain, erected in 1889. It stood originally at circa NJ 9979 6708, in the centre of what is now a busy roadway, but was relocated to circa NJ 9982 6706 in the 1960s. Described as a 'slim elaborate cast-iron column supported by wyvern scrolls which ones spouted water into granite basins directly beneath.' (Walker and Woodworth, 2015). It was originally topped by a lantern, now removed. It was intended to provide clean drinking water to the poorer classes, as an alternative to alcohol and for those who could not afford coffee or tea. The basins were infilled with concrete sometime after the fountain was relocated to prevent their use. It has recently been removed for restoration and to be relocated nearer where it had originally been sited.
- 2.6 At 2-6 Broad St is a house (HER NJ96NE0121) depicted on the OS 1st and 2nd edition maps. They show a building with frontage along Broad Street and gable end to High Street. Baillie Lewis Chalmers lived in the house when he married on 7 March 1824. Below three windows on the Broad Street frontage was a marriage stone, with carving of a monogram of interwoven letters and on each side a verse from the Old Testament Book of Proverbs 'The eyes of the Lord are in every place beholding the evil and the good'.

3 WATCHING BRIEF

Cameron Archaeology carried out a watching brief over groundbreaking works on 02 August 2021 and 20 October 2021.

3.1 The Structure

The area had been prepared prior to the arrival of an archaeologist by removal material covering the interior of the ESE walls of the existing retail space exposing two hearths (Illus 2).



Illus 2 WNW facing elevation within the front existing retail space; facing ESE.

The N-most hearth had been blocked with stone rubble (Illus 3), whilst the S-most retained internal brickwork (Illus 4) which would have supported a grate when the hearth was in use.



Illus 3 N- most hearth infilled with stone rubble within the ESE wall; facing ESE.



Illus 4 S-most hearth within the ESE wall; facing ESE.

Further preparation had entailed removal of floorboards from the N part of the existing retail space revealing rubble-built sleeper walls at approximately 1.15m intervals (Illus 5). There was no evidence of an internal wall between the two hearths suggesting that, if the room had been divided in an earlier phase of occupation, the division was constructed from timber rather than stone or brick.



Illus 5 Sleeper walls exposed by removal of floorboards within the retail space fronting onto High Street; facing S.

The front and rear retail spaces were separated by a granite wall. Though this is currently interior to the building, originally it was the exterior wall of the structure and was cut by a doorway (E) and window (W). The sill of the window had been removed prior to the watching brief. Both window and doorway were flared with a wider opening to the interior (approximately 1.2m to the exterior and 1.69 m on the interior) and were faced with granite ashlar (Illus 6).



Illus 6 Window (L) and doorway (R) with ashlar dressed surrounds in the rear wall of the earlier building; facing NE.

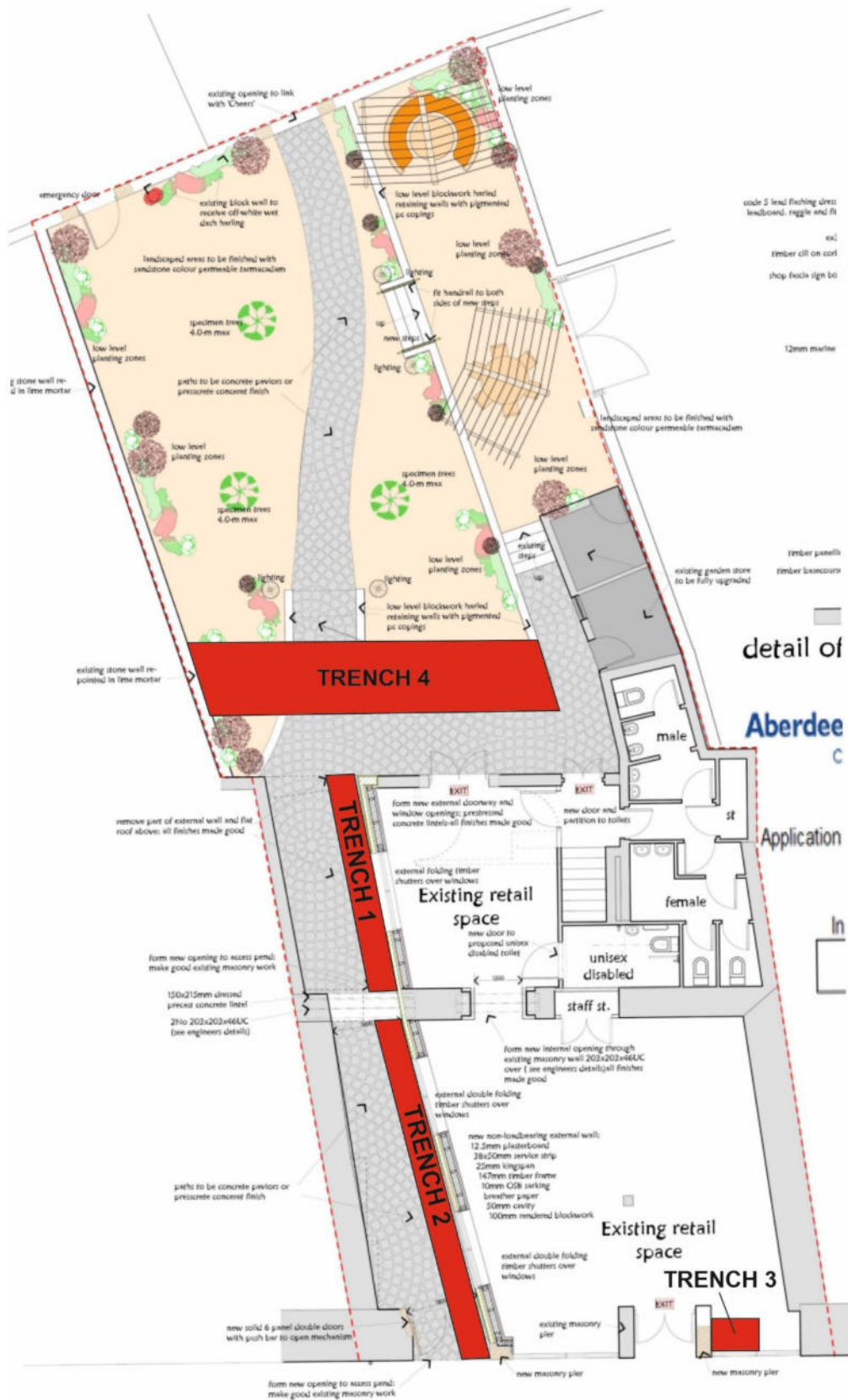
The extension to the earlier structure was visible in the ESE wall (Illus 7).



Illus 7 Working shot showing the modern cement block extension built onto the earlier granite structure of the ESE wall; facing ESE.

3.2 The Groundworks

During the watching brief four trenches were cut (Illus 8). Trench 1; 3.8m N-S, 0.6m E-W, 0.7m maximum depth and Trench 2; 5.8m N-S, 0.6m E-W, 0.3m maximum depth excavated on 02 August 2021; Trench 3; 0.7m N-S, 0.8m E-W, 0.3m maximum depth and Trench 4; 1.0m N-S, 8.2m E-W, maximum depth 0.7m excavated on 20 October 2021.



Illus 8 Site plan showing proposed development with trenches marked in red (copyright NB Planning and Architecture).

3.2.1 Trench 1

Trench 1 was situated in the rear of the existing retail space in an area which would have been external to the building at one time (Illus 8). It was cut through a modern concrete floor along the line of a drain. A ceramic drain lay beneath the concrete within a bed of sand-based hardcore (Illus 9).

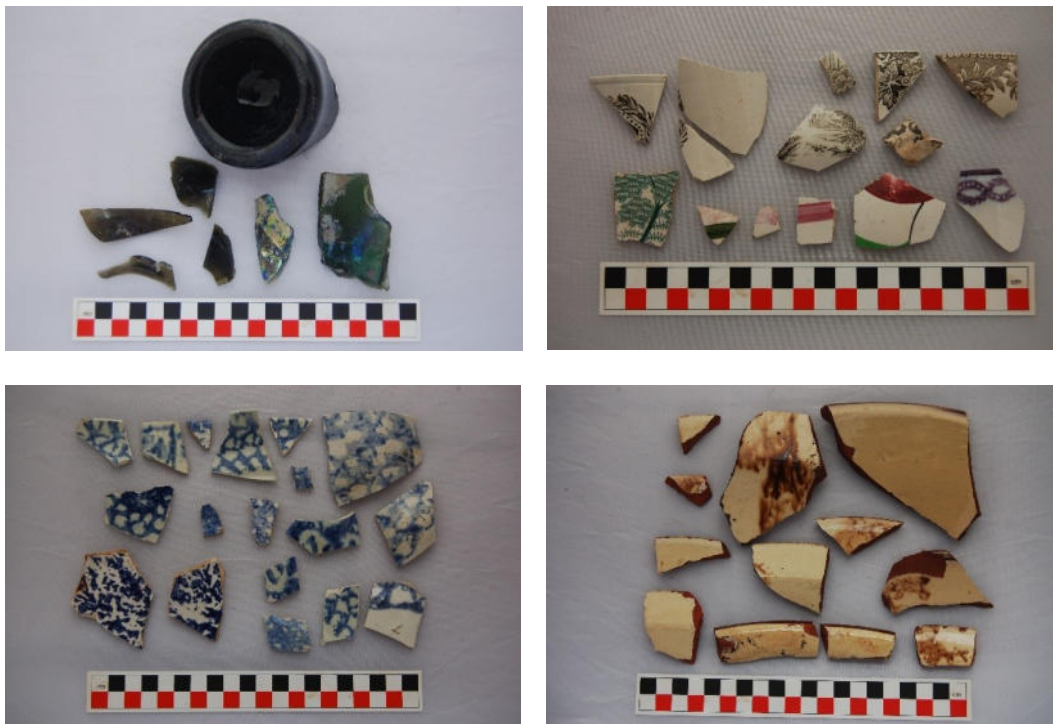


Illus 9 Section of drain located within Trench 1; facing E.

The remaining fill was dark brown compacted clay which showed evidence of disturbance. Building materials and domestic refuse was mixed through the fill. The domestic refuse included bird and animal bones, one of which may have been worked (Illus10), a significant quantity of glazed domestic ceramics, glass, ferrous objects (Illus 11) and a broken clay pipe bowl.



Illus 10 Possible worked bone artefact recovered from Trench 1.



Illus 11 Selection of glass (top L) and ceramic sherds recovered from Trench 1.

The clay pipe bowl was imprinted with the makers mark “BALME MILE END” (Illus 12); Balme were clay pipe manufacturers working in London during the 19th century (Higgins, 2004).



Illus 12 Clay pipe bowl stamped with the maker's mark “BALME MILE END” recovered from Trench 1.

3.2.2 Trench 2

Trench 2 was situated in the front area of existing retail space in the earlier phase of the building (Illus 8). The surface beneath the modern floorboards, between sleeper walls, was strewn with rubble and loose stones with a small quantity of domestic refuse including ceramic and glass sherds and a fragment of clay pipe stem. The fill of Trench 2 was hard compacted mid-orange clay. Foundations of the N wall of the structure truncated at ground level, but surviving to a depth of 0.3m were located to the N end of the trench (Illus 13 & 14) beneath an opening which had latterly housed a large floor-to-ceiling shop window.



Illus 13 Foundation of the N wall of the structure fronting onto the High Street, beneath the frame of a modern floor-to-ceiling window; facing N.



Illus 14 WNW facing section through the N wall of the structure fronting onto the High Street; facing ESE.

3.2.3 Trench 3

Trench 3 was situated adjacent to the N wall of the building next to an existing doorway (Illus 8). The only light source was a single arc lamp necessitating the use of flash light for all photographs. Prior to excavation the surface beneath the floorboards was strewn with building material including loose stones. The foundation of the N wall, constructed from rough granite stones, supported an I-beam which in turn supported a large window above (Illus 15).



Illus 15 Working shot of Trench 3 showing the granite foundation of the N wall supporting an I-beam and window above; facing N.

Some foundation stones were removed during excavation exposing the rear of straight cut granite stones used to face the exterior of the building (Illus 16).



Illus 16 Rear face of cut granite stones facing the N wall of the building revealed by removal of a rough foundation stone from beneath the I-beam; facing N.

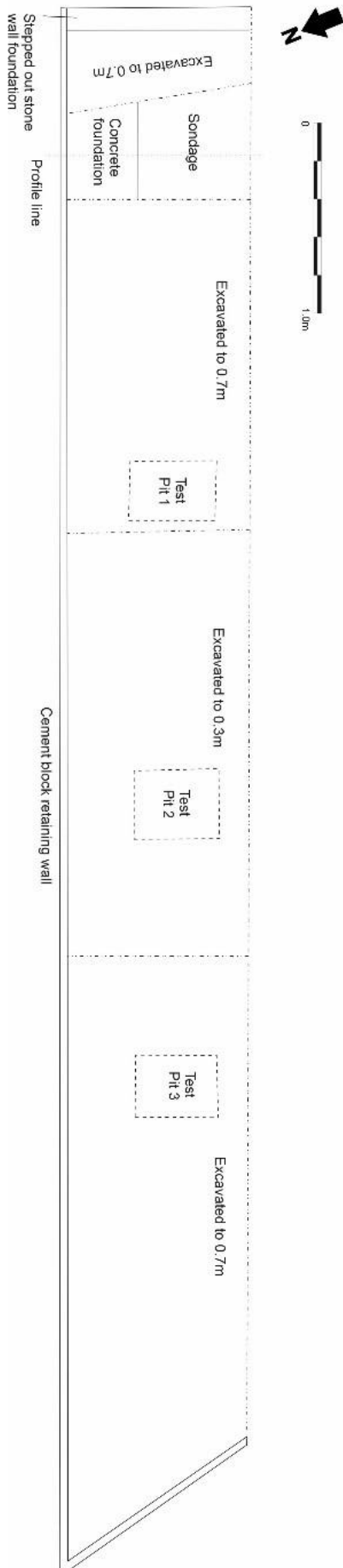
3.2.4 Trench 4

Trench 4 was located abutting a modern cement block wall in the garden S of the building (Illus 8). Initially 3 small test pits were dug to the required excavation depth of 0.7m exposing made ground. A piece of toffee coloured flint was recovered from Test Pit 1. It was quite weathered and polished suggesting it was a natural beach pebble rather than a worked stone tool or debitage (Illus 17).



Illus 17 Flint beach pebble recovered from Test Pit 1.

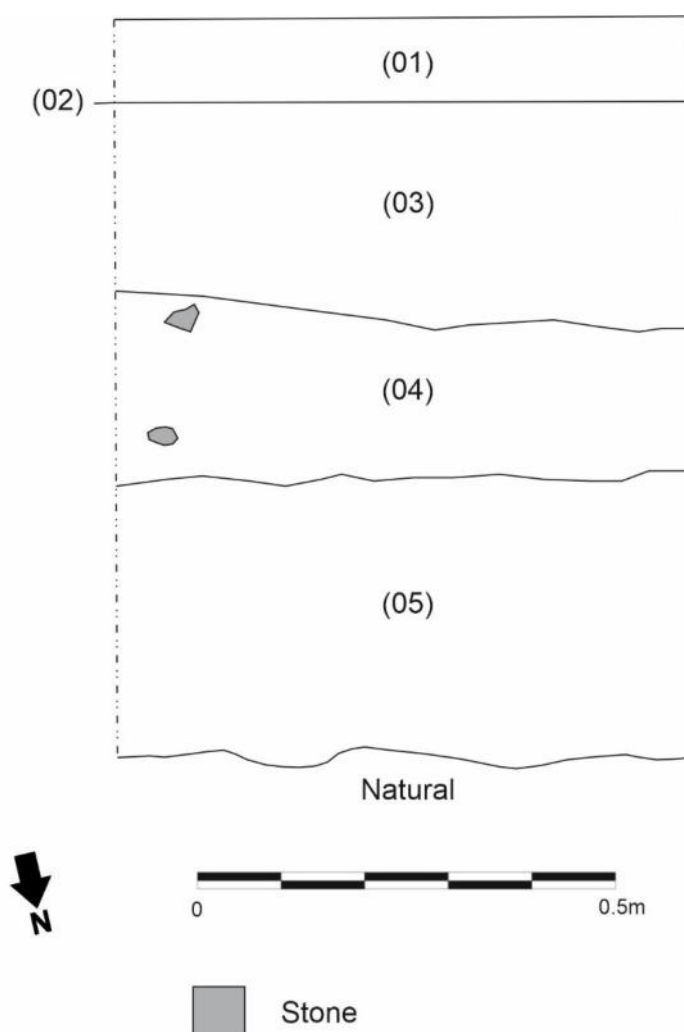
The test pits were extended to ascertain whether the made ground was consistent across the length of the trench (Illus 18).



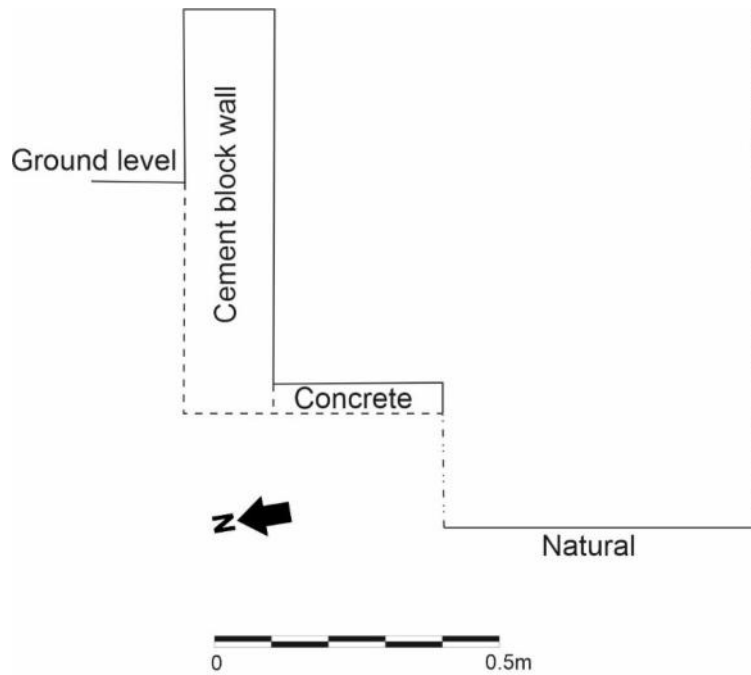
Illus 18 Plan of Trench 4 as observed during the Watching Brief. Test Pits are marked with dashed lines as 1 & 3 were completely removed and 2 partially removed by subsequent excavation.

A possible pit, a dark area of soil surrounded by what appeared to be lighter coloured natural, was located to the E end of Trench 4. However, on excavation it was shown to be part of the made ground. Along the length of the trench grey granite chippings (01), 0.1m deep, lay over blue plastic sheeting (02). This had been placed over dark brown loam (03) containing large quantities of building materials (broken brick, plaster, slate pieces etc.), plastic bottles and other modern refuse, sherds of 19th century pottery and mixed sherds of glass from vessels and windows. Patches of redeposited natural yellow clay mottled with brown loam (04) lay beneath (03), but did not extend across the entire trench. Gaps in this redeposited material gave the appearance of there being a pit present.

A sondage was cut through the possible pit at the E end of Trench 4. Redeposited natural yellow clay (04) partly covered grey loam (05) containing further mix of modern and 19th century sherds of pottery, and part of a clay pipe stem (Illus 19). Again, this suggests a possible further layer of made ground. It is likely that the cement block wall abutting Trench 4 to the N was constructed and the area S (encompassing the trench), filled in levelling the ground (Illus 20).



Illus 19 N Facing section of the sondage toward the E end of Trench 4.



Illus 20 Profile across the E end of Trench 4 (including sondage) following excavation of made ground on the S side of modern cement block wall.

Two pieces of medieval pottery were recovered from the sondage within Trench 4. The glaze and fabric of these sherds is very similar so it is likely they were part of the same vessel (Illus 21).



A.



B.

Illus 21 Exterior glazed (A) and interior unglazed (B) sherds of green glazed medieval pottery of dark grey fabric.

No archaeological features were identified in the areas of trench dug to the level required for the current groundworks (0.7m). The presence of layers of made ground throughout the trench indicates the whole area has been disrupted, therefore it is unlikely any archaeology survives.

4 CONCLUSIONS

Cameron Archaeology carried out a watching brief over groundbreaking works on 02 August 2021 and 20 October 2021. Four trenches were cut, two within the older structure fronting onto the High Street, one to the rear in an area which had been exterior to the building prior to construction of a modern extension and one in the rear garden area of the property. Some structural elements of the earlier building were exposed by the works including the foundation of the N wall fronting onto High Street, two hearths and sleeper walls which had supported the internal floor. An area of made ground was located to the exterior, S of the building. Though a quantity of domestic refuse was recovered, including two sherds of medieval pottery, no archaeological features were identified.

5 ACKNOWLEDGMENTS

Thanks to Nick Brown, NB Planning and Architecture for Twin Pillars Ltd for initiating this project and to Claire Herbert, Aberdeenshire Council Archaeology Service for her advice during this work. Many thanks to the contractors who hand dug all the trenches.

6 REFERENCES

Higgins, D. A. (2004). 'Appendix 2: The Clay Tobacco Pipes'. In G. Keevill (Ed.), *The Tower of London Moat: Archaeological Excavations 1995-9, Historic Royal Palaces Monograph No. 1*. Oxford Archaeology: Oxford. pp. 241-270.

Walker, D. W. & Woodworth (2015) In: D.W. Walker (Ed.) *The Buildings of Scotland. Aberdeenshire: North and Moray*. Yale University Press: London. pp. 203-204.

Cameron Archaeology
 45 View Terrace
 Aberdeen
 AB25 2RS
 01224 643020
 07581 181057
 cameronarch@btinternet.com
 www.cameronarchaeology.com

Company registration no 372223 (Scotland)
 VAT registration no 990 4373 00

APPENDIX 1 CONTEXTS

Context No.	Dimensions	Description
01	Full extent of trench, 0.1m deep	Grey granite chippings <0.03m
02	Full extent of trench, <1mm deep	Blue plastic sheet
03	Full extent of trench, 0.4m-0.6m deep	Dark brown sandy loam with mixed building debris, modern plastics, pottery and glass sherds. Made ground
04	Patches along full extent of trench, 0.15m-0.25m deep	Mottled yellow/orange redeposited natural clay mixed with brown loam with occasional building debris
05	Full extent of sondage, 0.35m deep	Grey sandy loam with mixed ceramic sherds and occasional building debris. Made ground/deisturbed

APPENDIX 2 PHOTOGRAPHS

Photograph ID	Direction Facing	Comments
DSC_7732	ESE	Existing retail space fronting onto High Street -NW facing elevation stripped back to stonework.
DSC_7733	ESE	Existing retail space fronting onto High Street -NW facing elevation stripped back to stonework.
DSC_7734	ESE	Existing retail space fronting onto High Street -NW facing elevation stripped back to stonework; with flash.
DSC_7735	ESE	Existing retail space fronting onto High Street -NW facing elevation stripped back to stonework N-most corner; with flash.
DSC_7736	ESE	Existing retail space fronting onto High Street -NW facing elevation stripped back to stonework N-most corner.
DSC_7737	ESE	Existing retail space fronting onto High Street -NW facing elevation stripped back to stonework with N- most hearth.

DSC_7738	ESE	Existing retail space fronting onto High Street -NW facing elevation stripped back to stonework with N-most hearth; with flash.
DSC_7739	ESE	Existing retail space fronting onto High Street -NW facing elevation stripped back to stonework mid-area.
DSC_7740	ESE	Existing retail space fronting onto High Street -NW facing elevation stripped back to stonework mid-area; with flash
DSC_7741	ESE	Existing retail space fronting onto High Street -NW facing elevation stripped back to stonework S-most hearth.
DSC_7742	ESE	Existing retail space fronting onto High Street -NW facing elevation stripped back to stonework S-most hearth; with flash.
DSC_7743	ESE	Existing retail space fronting onto High Street -NW facing elevation stripped back to stonework S-most hearth close up.
DSC_7744	ESE	Existing retail space fronting onto High Street -NW facing elevation stripped back to stonework S-most hearth close up; with flash.
DSC_7745	NE	Existing retail space fronting onto High Street -NW facing elevation stripped back to stonework with front shop window left.
DSC_7746	NE	Existing retail space fronting onto High Street -NW facing elevation stripped back to stonework with front shop window left; with flash.
DSC_7747	SE	Existing retail space fronting onto High Street -NW facing elevation stripped back to stonework.
DSC_7748	SE	Existing retail space fronting onto High Street -NW facing elevation stripped back to stonework; with flash.
DSC_7749	E	Existing retail space fronting onto rear garden (encompassing modern building extension) with Trench 1 cut through concrete raft- drain pipe exposed.
DSC_7750	ESE	Existing retail space fronting onto High Street -NW facing elevation stripped back to stonework- N-most hearth close up.
DSC_7751	ESE	Existing retail space fronting onto High Street -NW facing elevation stripped back to stonework- N-most hearth close up; with flash.
DSC_7752	ESE	Existing retail space fronting onto High Street -NW facing elevation stripped back to stonework- N-most hearth close up.
DSC_7753	ESE	Existing retail space fronting onto High Street -NW facing elevation stripped back to stonework- N-most hearth close up; with flash.
DSC_7754	ESE	Existing retail space fronting onto High Street -NW facing elevation stripped back to stonework- S-most hearth close up.

DSC_7755	ESE	Existing retail space fronting onto High Street -NW facing elevation stripped back to stonework- S-most hearth close up; with flash.
DSC_7756	ESE	Existing retail space fronting onto High Street -NW facing elevation stripped back to stonework- S-most hearth close up.
DSC_7758	ESE	Existing retail space fronting onto High Street -NW facing elevation stripped back to stonework- S-most hearth close up; with flash.
DSC_7759	N	Existing retail space fronting onto High Street looking across sleeper walls toward front shop window- top.
DSC_7760	N	Existing retail space fronting onto High Street looking across sleeper walls toward front shop window.
DSC_7761	N	Existing retail space fronting onto High Street looking across sleeper walls toward front shop window; with flash.
DSC_7762	S	Existing retail space fronting onto High Street looking across sleeper walls toward rear retail space.
DSC_7763	S	Existing retail space fronting onto High Street looking across sleeper walls toward rear retail space; with flash.
DSC_7764	N	Existing retail space fronting onto High Street remains of foundation of external N wall beneath modern window opening.
DSC_7765	N	Existing retail space fronting onto High Street remains of foundation of external N wall (L to R) beneath modern window opening; with flash.
DSC_7766	N	Existing retail space fronting onto High Street remains of foundation of external N wall (L to R) beneath modern window opening- wider frame shot.
DSC_7767	N	Existing retail space fronting onto High Street remains of foundation of external N wall (L to R) beneath modern window opening- wider frame shot; with flash
DSC_7768	N	Working shot existing retail space fronting onto rear garden (encompassing modern building extension) with Trench 1 part excavated.
DSC_7769	E	Working shot existing retail space fronting onto rear garden (encompassing modern building extension) with Trench 1 part excavated.
DSC_7770	E	Working shot existing retail space fronting onto rear garden (encompassing modern building extension) with Trench 1 part excavated.
DSC_7771	N	Working shot existing retail space fronting onto rear garden (encompassing modern building extension) with Trench 1 part excavated and section of drain in situ.
DSC_7772	N	Working shot existing retail space fronting onto rear garden (encompassing modern building extension) with Trench 1 part excavated and section of drain in situ.

DSC_7773	S	Trench 1 foundation of modern exterior wall exposed.
DSC_7774	S	Trench 1 foundation of modern exterior wall exposed.
DSC_7775		VOID
DSC_7776	N	Trench 1 foundation of rear wall of existing retail space fronting onto High Street- earlier exterior wall of shop prior to modern building extension.
DSC_7777	N	Trench 1 foundation of rear wall of existing retail space fronting onto High Street- earlier exterior wall of shop prior to modern building extension; with flash.
DSC_7778	N	Trench 1 foundation of rear wall of existing retail space fronting onto High Street- earlier exterior wall of shop prior to modern building extension.
DSC_7779	N	General working shot with Trench 1 centre front and Trench 2 extending to rear (with shovel) showing ashlar dressed surrounds of door and window (sill removed) openings.
DSC_7780	N	General working shot with Trench 1 centre front and Trench 2 extending to rear (with shovel) showing ashlar dressed surrounds of door and window (sill removed) openings; with flash.
DSC_7781	NE	General working shot showing ashlar dressed surrounds of door and window (sill removed) openings from existing rear retail space.
DSC_7782	NE	General working shot showing ashlar dressed surrounds of door and window (sill removed) openings from existing rear retail space; with flash.
DSC_7783	ESE	General working shot existing rear retail space showing modern cement block extension added to older structure.
DSC_7784	NW	General working shot existing rear retail space with modifications to older structure.
DSC_7785	NW	General working shot existing rear retail space with modifications to older structure; with flash.
DSC_7786		VOID
DSC_7787		VOID
DSC_7788	SE	Working shot showing relationship of S-most hearth to door and window openings into existing rear retail space (earlier exterior openings).
DSC_7789	SE	Working shot showing relationship of S-most hearth to door and window openings into existing rear retail space (earlier exterior openings); with flash.
DSC_7790	SSW	General shot looking from existing front retail space into existing rear retail space through modified window opening.

DSC_7791	SSW	General shot looking from existing front retail space into existing rear retail space through modified window opening; with flash.
DSC_7792	WNW	ESE facing section of S end of Trench 2 with floor of existing front retail space left in situ.
DSC_7793	WNW	ESE facing section of S end of Trench 2 with floor of existing front retail space left in situ; with flash.
DSC_7794	WNW	ESE facing section of S end of Trench 2 with floor of existing front retail space left in situ.
DSC_7795	WNW	ESE facing section of S end of Trench 2 with floor of existing front retail space left in situ; with flash.
DSC_7796	WNW	ESE facing section of S end of Trench 2 with floor of existing front retail space left in situ.
DSC_7797	ESE	WNW facing section of S end of Trench 2.
DSC_7798	ESE	WNW facing section of S end of Trench 2.
DSC_7799	ESE	WNW facing section of S end of Trench 2; with flash.
DSC_7800	N	Existing retail space fronting High Street S facing elevation of exterior wall after partial removal.
DSC_7801	N	Existing retail space fronting High Street S facing elevation of exterior wall after partial removal; with flash.
DSC_7802	ESE	Existing retail space fronting High Street WNW facing section cut through foundation of N wall beneath modern window.
DSC_7803	ESE	Existing retail space fronting High Street WNW facing section cut through foundation of N wall beneath modern window; with flash.
DSC_7804	WNW	Existing retail space fronting High Street ESE facing section cut through foundation of N wall beneath modern window.
DSC_7805	WNW	Existing retail space fronting High Street ESE facing section cut through foundation of N wall beneath modern window; with flash.
DSC_7806	WNW	Existing retail space fronting High Street ESE facing section cut through foundation of N wall beneath modern window.
DSC_7807	N	Shot along the length of Trench 2 within existing retail space fronting High Street.
DSC_7808	N	Shot along the length of Trench 2 within existing retail space fronting High Street.
DSC_7809	n/a	Green glass sherds from Trench 1- front.
DSC_7810	n/a	Green glass sherds from Trench 1- reverse.
DSC_7811	n/a	Mixed glass sherds from Trench 1.
DSC_7812	n/a	Brown glass Schweppes bottle sherd from Trench 1.

DSC_7813	n/a	Sponge decorated ware from Trench 1- front.
DSC_7814	n/a	Sponge decorated ware from Trench 1- reverse.
DSC_7815	n/a	Pearl ware and Willow pattern transfer decorated ceramic sherds from Trench 1- front.
DSC_7816	n/a	Pearl ware and Willow pattern transfer decorated ceramic sherds from Trench 1- reverse.
DSC_7817	n/a	Mixed decorated ceramic sherds from Trench 1- front.
DSC_7818	n/a	Mixed decorated ceramic sherds from Trench 1- reverse.
DSC_7819	n/a	Undecorated ceramic sherds from Trench 1- front.
DSC_7820	n/a	Undecorated ceramic sherds from Trench 1- reverse.
DSC_7821	n/a	Dark glazed earthenware sherds from Trench 1- front.
DSC_7822	n/a	Dark glazed earthenware sherds from Trench 1- reverse.
DSC_7823	n/a	Cream glazed redware rim sherds from Trench 1- front.
DSC_7824	n/a	Cream glazed redware rim sherds from Trench 1- reverse.
DSC_7825	n/a	Cream glazed redware sherd from Trench 1- front.
DSC_7826	n/a	Cream glazed redware sherd from Trench 1- reverse.
DSC_7827	n/a	Cream glazed redware matched base sherds from Trench 1- front.
DSC_7828	n/a	Cream glazed redware matched base sherds from Trench 1- reverse.
DSC_7829	n/a	Cream glazed redware base sherds from Trench 1- front.
DSC_7830	n/a	Cream glazed redware base sherds from Trench 1- reverse.
DSC_7831	n/a	Cream glazed redware body sherds from Trench 1- front.
DSC_7832	n/a	Cream glazed redware body sherds from Trench 1- reverse.
DSC_7833	n/a	Redware body sherds with internal cream glaze and external brown glaze from Trench 1- front.
DSC_7834	n/a	Redware body sherds with internal cream glaze and external brown glaze from Trench 1- reverse.
DSC_7835	n/a	Ferric objects from Trench 1.
DSC_7836	n/a	Animal/ bird bones from Trench 1- front.
DSC_7837	n/a	Animal/ bird bones from Trench 1- reverse.
DSC_7838	n/a	Possible worked bone from Trench 1- front.
DSC_7839	n/a	Possible worked bone from Trench 1- reverse.
DSC_7840	n/a	Partial kaolin clay pipe bowl with makers mark from Trench 1- outside.
DSC_7841	n/a	Partial kaolin clay pipe bowl with makers mark from Trench 1- interior.

DSC_7842	n/a	White clay marble from a Codd bottle from Trench 1.
DSC_7843	n/a	Decorated ceramic sherds from Trench 2- front.
DSC_7844	n/a	Decorated ceramic sherds from Trench 2- reverse.
DSC_7845	n/a	Green glass sherd from Trench 2- front.
DSC_7846	n/a	Green glass sherd from Trench 2- reverse.
DSC_7847	n/a	Kaolin clay pipe stem fragment from Trench 2.
DSC_7848	n/a	Kaolin clay pipe stem fragment from Trench 2.
DSC_8513	E	Trench 3 working shot of trench prior to commencement of excavation.
DSC_8514	E	Trench 3 working shot of trench prior to commencement of excavation; with flash.
DSC_8515	W	Trench 3 working shot of trench prior to commencement of excavation; with flash.
DSC_8516	NNE	Trench 3 working shot of base of N wall with boarded up window above metal plate and I beam above granite wall foundation; with flash.
DSC_8517	NNE	Trench 3 working shot of base of N wall with boarded up window above metal plate and I beam above granite wall foundation; with flash.
DSC_8518	NNE	Trench 3 working shot of base of N wall with boarded up window above metal plate and I beam above granite wall foundation overhead view; with flash.
DSC_8519	E	N-most hearth with rubble fill removed; with flash.
DSC_8520	NNE	Trench 3 cleared to required level with base of N wall with metal plate and I beam above granite wall foundation; with flash.
DSC_8521		VOID
DSC_8522		VOID
DSC_8523	NNE	Trench 3 cleared to required level with base of N wall with metal plate and I beam above granite wall foundation; with flash.
DSC_8524	NNE	Trench 3 cleared to required level with base of N wall with metal plate and I beam above granite wall foundation; with flash.
DSC_8525	NNE	Trench 3 cleared to required level with base of N wall with metal plate and I beam above granite wall foundation; with flash.
DSC_8526	E	Exterior S of building Test pit 3.
DSC_8527	E	Exterior S of building Test pit 2.
DSC_8528	E	Exterior S of building working shot Test pit 1.
DSC_8529	E	Working shot- Test pit 1 extended to become Trench 4 during excavation.

DSC_8530	E	Working shot- Test pit 1 extended to become Trench 4 during excavation with adjacent pathway on N side.
DSC_8531	E	Working shot- Test pit 1 extended to become Trench 4 during excavation with adjacent pathway on N side.
DSC_8532	S	Trench 4 E end possible feature showing as darker patch of soil.
DSC_8533	S	Trench 4 E end possible feature showing as darker patch of soil.
DSC_8534	E	Sondage cut in E end of Trench 4 with concrete wall foundation to L overlying redeposited mixed soil which had at first appeared to be a feature.
DSC_8535	SSW	NNE facing section through sondage in Trench 4 (horizontal and vertical ranging poles).
DSC_8536	SSW	NNE facing section through sondage in Trench 4 (horizontal ranging pole only).
DSC_8537	SSW	NNE facing section through sondage in Trench 4 (vertical ranging pole only)
DSC_8538	W	Working shot Trench 4 during excavation of W end exposing buried drain and modern plastic material mixed through fill.
DSC_8539	SSW	Working shot Trench 4 during excavation of W end exposing buried drain and modern plastic material mixed through fill.
DSC_8540	W	Trench 4 W end excavated to required level with exposed drain and redeposited natural surface (lighter yellow).
DSC_8541	E	Trench 4 2/3rds excavated to required level.
DSC_8605	n/a	Ceramic sherds from (03) Trench 4
DSC_8606	n/a	Ceramic sherds from (03) Trench 4 reverse
DSC_8607	n/a	Glass sherds from (03) Trench 4
DSC_8608	n/a	Flint pebble from (03) Trench 4
DSC_8609	n/a	Flint pebble from (03) Trench 4
DSC_8610	n/a	Flint pebble from (03) Trench 4
DSC_8611	n/a	Ceramic sherds and kaolin pipe stem from (05) Trench 4
DSC_8612	n/a	Ceramic sherds and kaolin pipe stem from (05) Trench 4 reverse
DSC_8613	n/a	Medieval pottery sherds from (05) Trench 4
DSC_8614	n/a	Medieval pottery sherds from (05) Trench 4 reverse



DSC_7732



DSC_7733



DSC_7734



DSC_7735



DSC_7736



DSC_7737



DSC_7738



DSC_7739



DSC_7740



DSC_7741



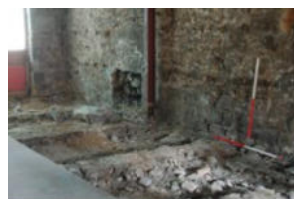
DSC_7742



DSC_7743



DSC_7744



DSC_7745



DSC_7746



DSC_7747



DSC_7748



DSC_7749



DSC_7750



DSC_7751



DSC_7752



DSC_7753



DSC_7754



DSC_7755



DSC_7756



DSC_7757



DSC_7758



DSC_7759



DSC_7760



DSC_7761



DSC_7762



DSC_7763



DSC_7764



DSC_7765



DSC_7766



DSC_7767



DSC_7768



DSC_7769



DSC_7770



DSC_7771



DSC_7772



DSC_7773



DSC_7774



DSC_7776



DSC_7777



DSC_7778



DSC_7779



DSC_7780



DSC_7781



DSC_7782



DSC_7783



DSC_7784



DSC_7785



DSC_7788



DSC_7789



DSC_7790



DSC_7791



DSC_7792



DSC_7793



DSC_7794



DSC_7795



DSC_7796



DSC_7797



DSC_7798



DSC_7799



DSC_7800



DSC_7801



DSC_7802



DSC_7803



DSC_7804



DSC_7805



DSC_7806



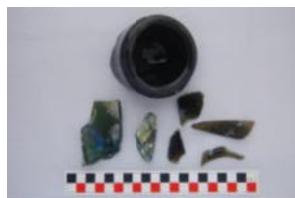
DSC_7807



DSC_7808



DSC_7809



DSC_7810



DSC_7811



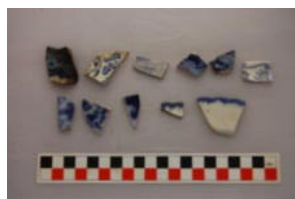
DSC_7812



DSC_7813



DSC_7814



DSC_7815



DSC_7816



DSC_7817



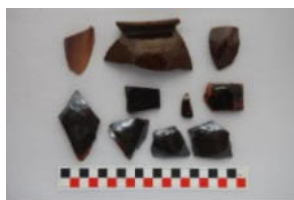
DSC_7818



DSC_7819



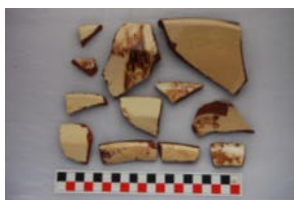
DSC_7820



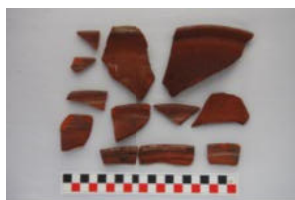
DSC_7821



DSC_7822



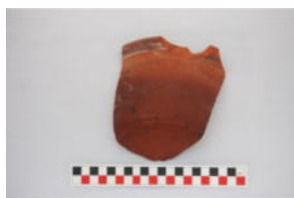
DSC_7823



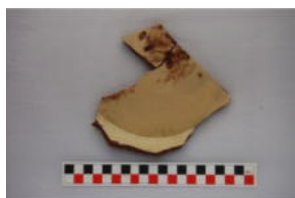
DSC_7824



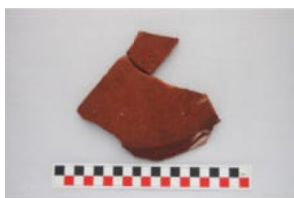
DSC_7825



DSC_7826



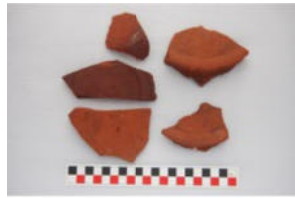
DSC_7827



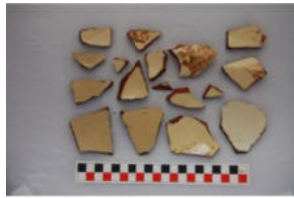
DSC_7828



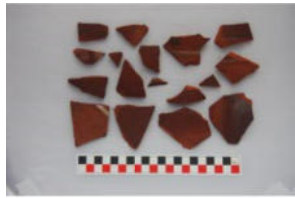
DSC_7829



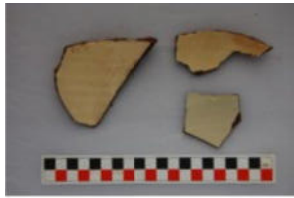
DSC_7830



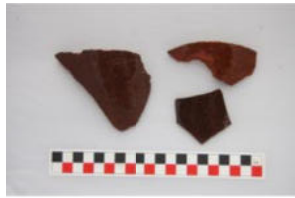
DSC_7831



DSC_7832



DSC_7833



DSC_7834



DSC_7835



DSC_7836



DSC_7837



DSC_7838



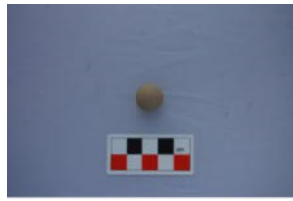
DSC_7839



DSC_7840



DSC_7841



DSC_7842



DSC_7843



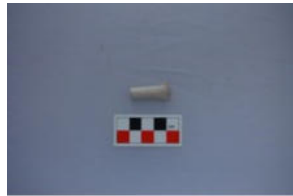
DSC_7844



DSC_7845



DSC_7846



DSC_7847



DSC_7848



DSC_8513



DSC_8514



DSC_8515



DSC_8516



DSC_8517



DSC_8518



DSC_8519



DSC_8520



DSC_8523



DSC_8524



DSC_8525



DSC_8526



DSC_8527



DSC_8528



DSC_8529



DSC_8530



DSC_8531



DSC_8532



DSC_8533



DSC_8534



DSC_8535



DSC_8536



DSC_8537



DSC_8538



DSC_8539



DSC_8540



DSC_8541



DSC_8605



DSC_8606



DSC_8607



DSC_8608



DSC_8609



DSC_8610



DSC_8611



DSC_8612



DSC_8613



DSC_8614