

Project Code: GWPK09
Date of report: September 2009
Client: Griffin Wind Farm Ltd



GRIFFIN WIND FARM, PERTH AND KINROSS

Results of an Archaeological Watching Brief on Engineers' Test Pits

Jamie Humble
MA(Hons)

PROJECT SUMMARY SHEET

<i>Client</i>	GRIFFIN WIND FARM LTD
<i>National Grid Reference</i>	NN 940 440
<i>Address</i>	KINROSS
<i>Parish</i>	LITTLE DUNKELD
<i>Council</i>	PERTH AND KINROSS
<i>Planning Application Ref No</i>	N/A
<i>NMRS No</i>	N/A
<i>Oasis No</i>	N/A
<i>SMR No</i>	N/A
<i>HB/SAM No</i>	N/A
<i>Listing Category</i>	N/A
<i>Project Manager</i>	CHRIS LOWE
<i>Text</i>	JAMIE HUMBLE
<i>Illustrations</i>	RICHARD CONOLLY
<i>Typesetting</i>	CAROLINE NORRMAN
<i>Fieldwork</i>	JAMIE HUMBLE
<i>Specialists</i>	N/A
<i>Schedule</i>	
<i>Fieldwork</i>	25-26 AUGUST 2009
<i>Report</i>	SEPTEMBER 2009

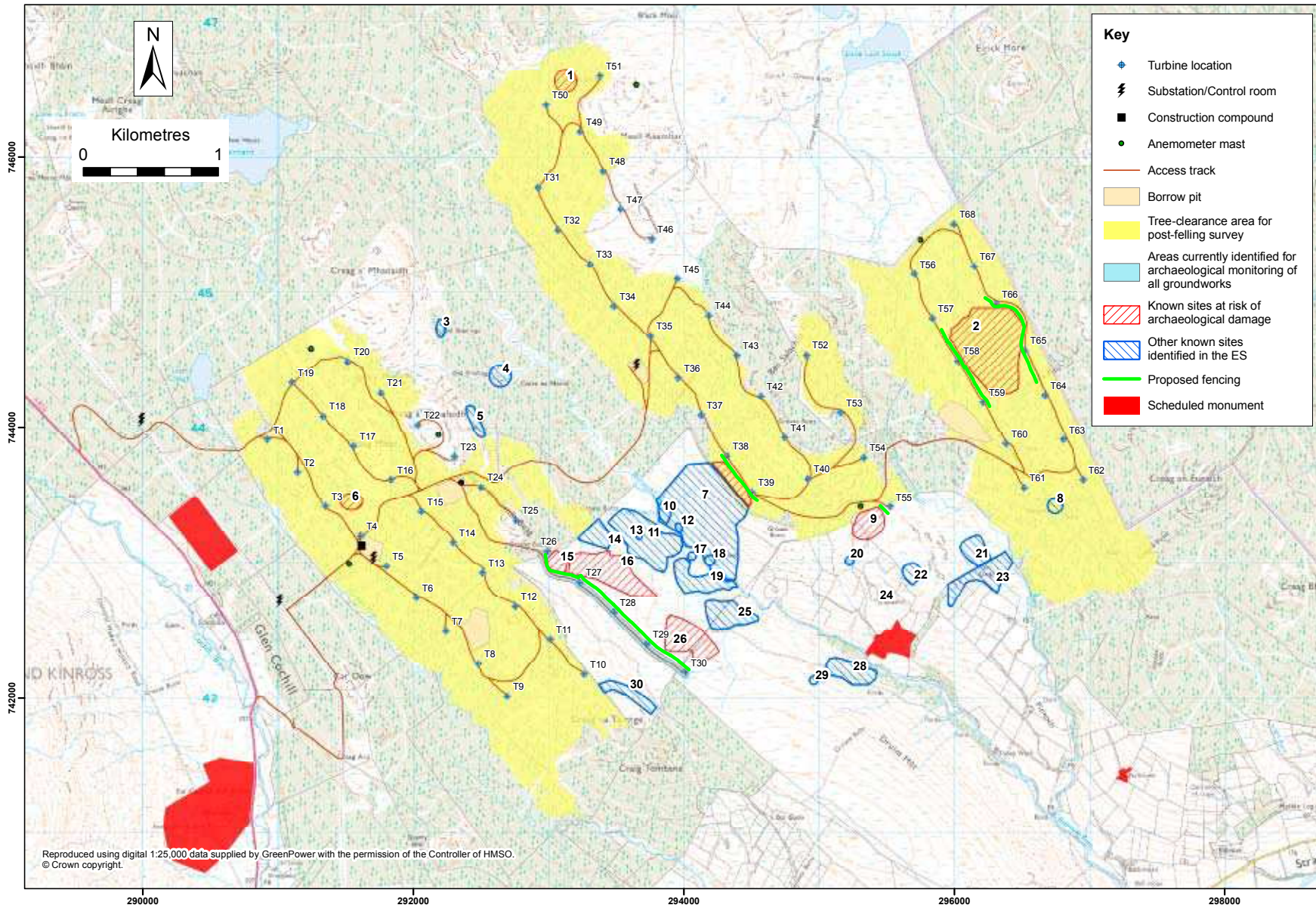
Signed off by:

Chris Lowe BA(Hons) MA PhD MIFA FSA Scot, Project Manager

Date:.....

CONTENTS

INTRODUCTION	1
METHODOLOGY	1
RESULTS AND DISCUSSION	1
MITIGATION	2
REFERENCES	2
APPENDIX 1 TRENCH REGISTER	3
APPENDIX 2 PHOTOGRAPHIC REGISTER (DIGITAL ONLY)	5



Illus 1
 Layout of wind farm

Griffin Wind Farm, Perth and Kinross

Results of an Archaeological Watching Brief on Engineers' Test Pits

by Jamie Humble

An archaeological watching brief was conducted over engineers' test pitting operations at Turbines 26 to 30 of the Griffin Wind Farm, Perth and Kinross. No archaeological features or artefacts were observed in any of the trial holes.

INTRODUCTION

This report presents the results of an archaeological watching brief, carried out on engineers' test pits excavated at Turbines 26–30 (Illustrations 1 & 2), in advance of the start of construction at the Griffin Wind Farm, Perth & Kinross.



Illus 2
General view of site

RESULTS AND DISCUSSION

The following presents a summary of the results. Full trench records can be found in Appendix 1. A record of digital photographs taken is listed in Appendix 2.

Five trial holes were excavated at each turbine location, one at the centre and four at the corners of a 19m by 19m square. The trial holes were intended to be up to 4m deep but often this depth could not be reached due to the sides of the trench collapsing or hard ground. The trial holes were located in a mix of firm dry ground covered with heather and boggy ground with moss and grass cover.

The topsoil in the test pits comprised up to 1m of humic, fibrous peat overlying an orange brown clayey sand, gravel and stone subsoil. In the boggy areas of the site overlying the clayey sands and gravels there was a blue grey sandy clay with frequent stone. This may be a result of post-depositional chemical weathering of the underlying clayey sands and gravels.

No features of archaeological interest were observed in any of the trial holes excavated.

Two shooting butts (Illustrations 3 & 4) were observed during the watching brief, located close to Turbine 26.

METHODOLOGY

The watching brief was intended to ensure that any archaeologically significant deposits threatened by engineers' test pitting operations were appropriately recorded.

The location and extent of excavations was determined by the requirements of the engineer. All trial holes were excavated by a back-acting machine fitted with a toothless bucket. The location of the trial holes was recorded using a hand held GPS handset.

No significant archaeological features or deposits were present to be recorded in any of the trial holes. No finds were collected; nor were any environmental samples taken.



Illus 3
Shooting butt by Turbine 26



Illus 4

Shooting butt by Turbine 26

- Shooting butt 1: NN 93023 43096
- Shooting butt 2: NN 92967 43089

Both structures were of dry-stone construction with a turf and stone bank on the uphill side. The turf bank means that the shooting butt is hard to see from the uphill side. Game would have been driven down the hill into the line of waiting guns.

MITIGATION

In line with the Archaeological Mitigation Plan (AMP), the two newly recorded shooting butts close to Turbine 26 will have to be protected from damage by fencing them off. If protection from damage is not possible then an appropriate programme of archaeological recording and excavation will be required.

REFERENCES

Headland Archaeology Ltd (2009), *Griffin Wind Farm: Archaeological Mitigation Plan (AMP), Written Scheme of Investigation for Archaeological Works.*

APPENDIX 1 TRENCH REGISTER

Trench	Dimensions	Depth	Deposits	Location
26.1	2m by 0.8m	2.5m	0.25m of peat topsoil Pale orange brown sand, gravel and stone	NN 92979 43081
26.2	2m by 0.8m	2.5m	0.25m of peat topsoil Pale orange brown clayey sand, gravel and stone	NN 92991 43096
26.3	2m by 0.8m	2.5m	0.25m of peat topsoil Pale orange brown sand, gravel and stone	NN 92994 43084
26.4	2m by 0.8m	2.5m	0.25m of peat topsoil Pale orange brown sand, gravel and stone	NN 93005 43077
26.5	2m by 0.8m	3m	0.25m of peat topsoil Pale orange brown clayey sand, gravel and stone	NN 92990 43067
27.1	2m by 0.8m	2.8m	0.2m of peat topsoil 1.6m Blue grey sandy clay and stone Orange brown clayey sand, gravel and stone	NN 93248 42844
27.2	2m by 0.8m	2.5m	0.2m of peat topsoil Orange brown clayey sand, gravel and stone	NN 93226 42929
27.3	2m by 0.8m	2.5m	0.6m of peat topsoil 0.3m Blue grey sandy clay and stone Orange brown clayey sand, gravel and stone	NN 93234 42846
27.4	2m by 0.8m	1.7m	0.2m of peat topsoil Orange brown clayey sand, gravel and stone	NN 93213 42842
27.5	2m by 0.8m	2.5m	0.5m of peat topsoil 0.7m Blue grey sandy clay and stone Orange brown clayey sand, gravel and stone	NN 93202 42856
28.1	2m by 0.8m	2.1m	0.9m of peat topsoil 0.2m Blue grey sandy clay and stone Orange brown clayey sand and stone	NN 93502 42625
28.2	2m by 0.8m	2.8m	0.3m of peat topsoil 0.7m Blue grey sandy clay and stone Orange brown sandy clay and stone	NN 93488 42616
28.3	2m by 0.8m	2.5m	0.7m of peat topsoil 0.3m Blue grey sandy clay Orange brown clayey sand, gravel and stone	NN 93486 42626
28.4	2m by 0.8m	2.5m	0.4m of peat topsoil 0.5m band of large stones and boulders in blue grey sandy clay matrix Orange brown clayey sand and stone	NN 93470 42634
28.5	2m by 0.8m	3m	0.4m of peat topsoil 0.7m Blue grey sandy clay and stone Orange brown clayey sand, gravel and stone	NN 93988 42649
29.1	2m by 0.8m	2.5m	0.9m of peat topsoil Blue grey sandy clay with frequent stone	NN 93745 42388
29.2	2m by 0.8m	2.7m	0.45m of peat topsoil Blue grey sandy clay with frequent stone	NN 93737 42373
29.3	2m by 0.8m	2.5m	0.2-0.3m of peat topsoil Blue grey sandy clay with frequent stone	NN 93730 42389
29.4	2m by 0.8m	3m	0.4m of peat topsoil Blue grey sandy clay with frequent stone	NN 93720 42387
29.5	2m by 0.8m	2.5m	0.3m of peat topsoil Blue grey sandy clay with frequent stone	NN 93732 42404
30.1	2m by 0.8m	4m	1.0m of peat topsoil 0.3m of pale grey clayey sand with frequent stone Orange brown sandy clay	NN 94027 42185

Trench	Dimensions	Depth	Deposits	Location
30.2	2m by 0.8m	2.6m	0.2-0.3m of peat topsoil 0.1-0.2m pale grey clayey sand with frequent stone Orange brown sandy clay	NN 94015 42169
30.3	2m by 0.8m	3.5	0.3-0.4m of peat topsoil 0.3m pale grey clayey sand with frequent stone Orange brown sandy clay	NN 94010 42182
30.4	2m by 0.8m	2.5m	0.1-0.2m of peat topsoil Orange brown sandy clay	NN 93995 42183
30.5	2m by 0.8m	3.2m	0.6m of peat topsoil 0.6m pale grey sandy clay with frequent large stone Orange brown sandy clay	NN 94006 42199

APPENDIX 2 PHOTOGRAPHIC REGISTER (DIGITAL ONLY)

Photo no.	Direction	Description
1	W	General view of site
2	W	General view of site
3	S	Location of Turbine 30
4	W	General view of site
5	W	Trial hole 30.3
6	W	Trial hole 30.1
7	NW	Trial hole 30.2
8	N	Trial hole 30.4
9	NW	Trial hole 30.5
10	S	Trial hole 29.3
11	S	Trial hole 29.1
12	SE	Trial hole 29.2
13	NE	General view of site
14	W	Trial hole 29.4
15	SE	General view of site
16	N	General view of site
17	W	General view of site
18	N	Trial hole 29.5
19	SE	Location of Turbine 29
20	E	Trial hole 28.3
21	W	Trial hole 28.1
22	NW	Trial hole 28.2
23	W	Trial hole 28.4
24	W	Trial hole 28.5
25	NW	Trial hole 27.3
26	NW	Trial hole 27.1
27	E	Trial hole 27.2
28	W	Trial hole 27.4
29	W	Trial hole 27.5
30	NW	Shooting butt 1
31	S	Shooting butt 1
32	N	Shooting butt 2
33	W	Shooting Butt 2
34	W	Trial hole 26.3
35	S	Trial hole 26.1
36	W	Trial hole 26.2
37	E	Trial hole 26.4