

GUARD ARCHAEOLOGY



Campbeltown Wastewater Quality Project Watching Brief Data Structure Report Project 3255

www.guard-archaeology.co.uk

Campbeltown Wastewater Quality Project

Watching Brief Data Structure Report

On behalf of: Black and Veatch

NGR: NR 71865 20845



Project Number: 3255

Project Manager: John Atkinson

Report by: Iraia Arabaolaza & Alan Hunter Blair

Illustrations: Fiona Jackson & Gillian McSwan

Approved by:

Date:

*This document has been prepared in accordance
with GUARD Archaeology Limited standard operating procedures.*

GUARD Archaeology Limited
52 Elderpark Workspace
100 Elderpark Street
Glasgow
G51 3TR

Tel: 0141 445 8800
Fax: 0141 445 3222
email: info@guard-archaeology.co.uk



www.guard-archaeology.co.uk

Contents

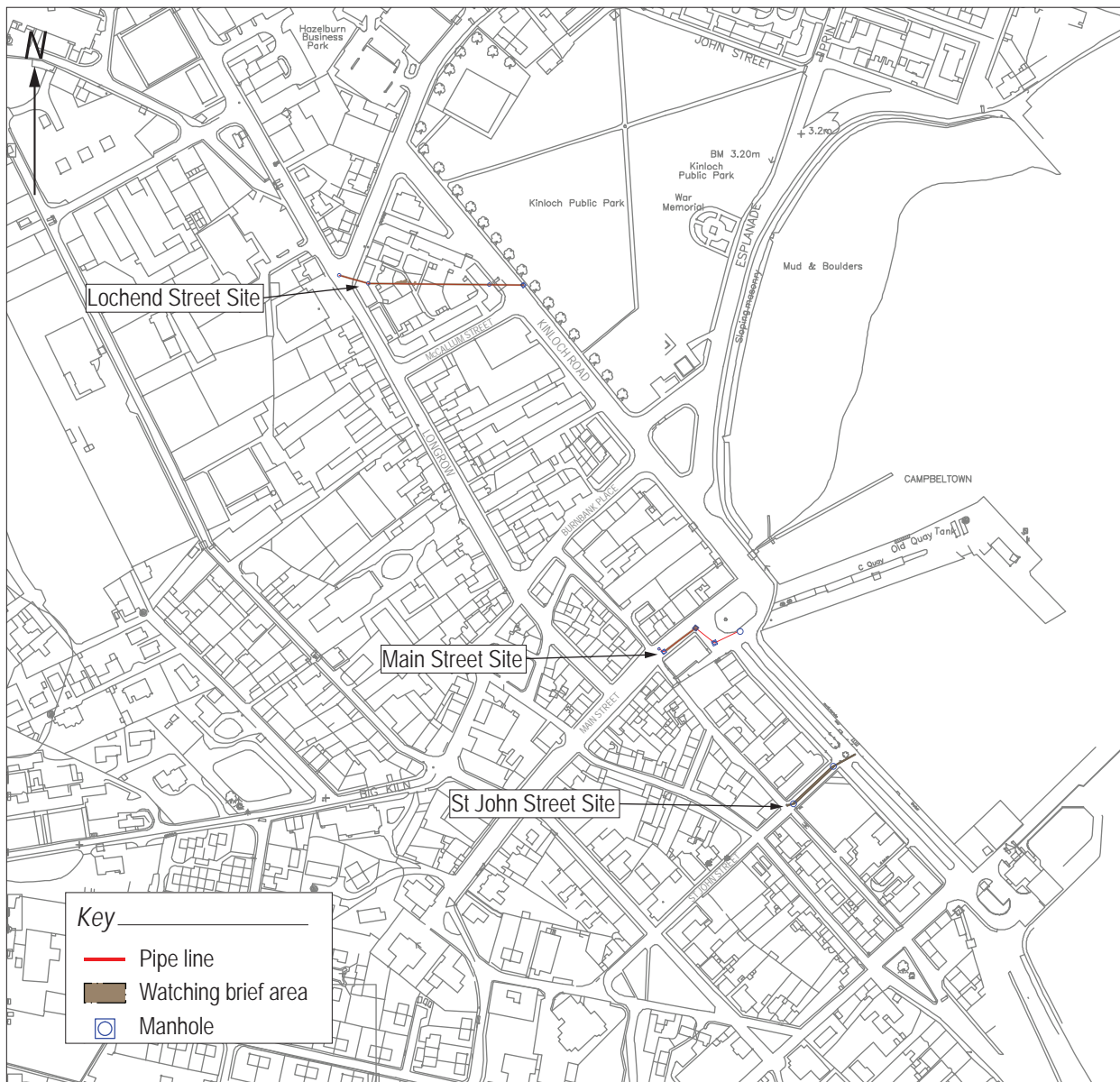
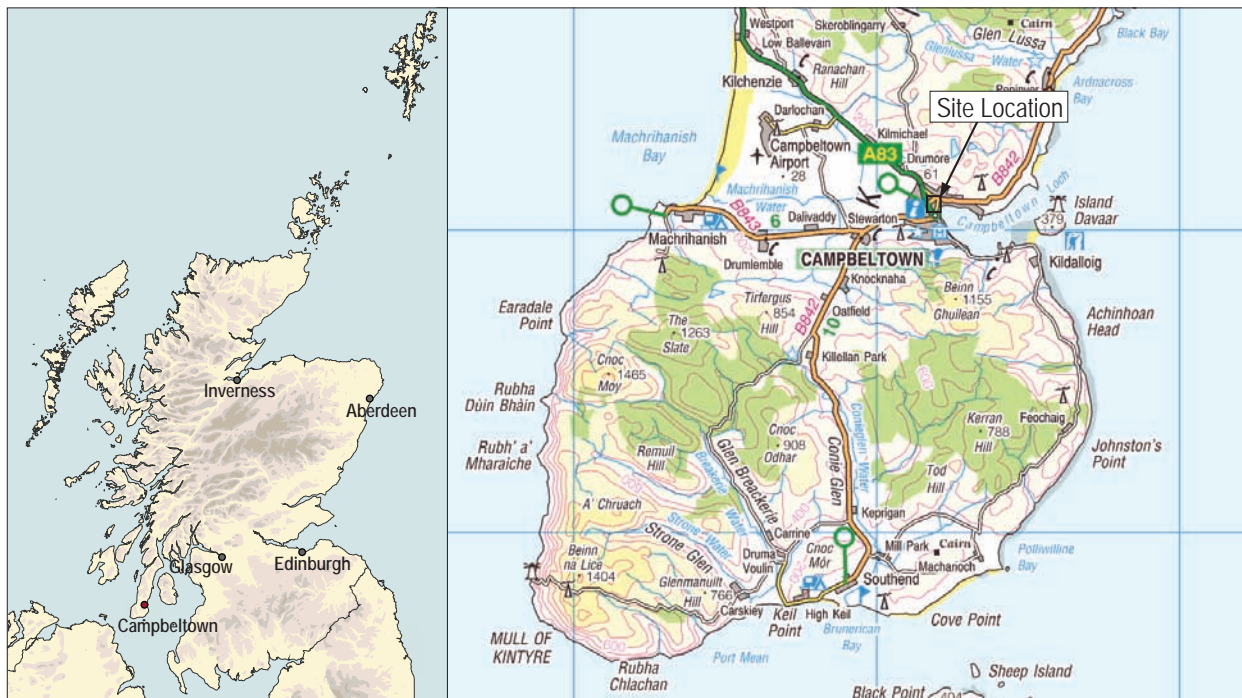
Executive Summary	5
Introduction	5
Site Location	5
Historical Background	5
Archaeological Potential	7
Aims and Objectives	7
Fieldwork Methodology	8
Results	8
Discussion	14
Recommendations	14
Acknowledgements	16
Appendices	18
Appendix A: Context Descriptions	18
Appendix B: Photographic Record	27
Appendix C: Drawing Register	31
Appendix D: Finds Register	31
Appendix E: Sample Register	33
Appendix F: Discovery And Excavation Scotland Entry	34

List of Figures

Figure 1: Site location	4
Figure 2: Plans from Lochend Street	9
Figure 3: Plans from Main Street	12
Figure 4: Plans from St Johns Street	15

List of Plates

Plate 1: Old Quay depicted on an extract from William Roy's Military Survey of Scotland published 1747-55	6
Plate 2: Campbeltown depicted on an extract from William Douglas' map published circa 1760	6
Plate 3: Campbeltown from an extract of George Langland's map of Argyllshire, published in 1801	6
Plate 4: Campbeltown Harbour from an extract of The Admiralty Charts of Scotland, published in 1840	6
Plate 5: Main Street shown on an extract from the Ordnance Survey large scale Scottish town plans, published 1865	6
Plate 6: Campbeltown depicted on an extract from the Ordnance Survey One-inch to the mile maps of Scotland - 2nd Edition, published 1896	6
Plate 7: Campbeltown depicted on an extract from the Great Reform Act Plans and Reports map, published 1832	7
Plate 8: Wall [009] and concrete floor (010), from the south-east	8
Plate 9: Building remains associated with the demolished Kinloch Distillery	8
Plate 10: Well 015, from the north-east	10
Plate 11: Brick structure 5009, from the south	10
Plate 12: Kinloch Distillery, depicted on an extract from the Ordnance Survey Large Scale Town Plans, published in 1865	10
Plate 13: Wall 016, from the north-west	11
Plate 14: Wall 042, from the north-east	11
Plate 15: Manhole 3 showing disturbance by numerous services, from the south.	11
Plate 16: Culvert 035 in manhole 3 from the north-west	11
Plate 17: Culvert 046 and mortar and cobbled surfaces 047 and 041, from the north-east	13
Plate 18: Sea wall 065, cobble 066 and degraded paved and mortar floor 067, from the south-west	13
Plate 19: Sea wall 065 from the north-west	13
Plate 20: Cobbled surface 079, brick partition/kerb 076 and paving 077 from the south-western	14



Key

- Pipe line
- Watching brief area
- Manhole

Figure 1:
Site location.

0 250 m

Reproduced by permission of Ordnance Survey on behalf of the Controller of Her Majesty's Stationery Office. All rights reserved. Licence number 100050699.

Executive Summary

- 1.1 An archaeological watching brief was carried out by GUARD Archaeology Limited, on behalf of Black and Veatch during pipe-laying works in Campbeltown, Argyll during sewer upgrade works. This was undertaken in accordance with Terms of Reference prepared by West of Scotland Archaeology Service (WoSAS). Features of archaeological significance were identified towards both ends of the study-area. To the south-east along Main St two walls, one relating to the Old Quay and the other an earlier shoreline were recorded together with other building remains and eighteenth century midden layers. A further two walls were recorded at St John St one forming part of the old quay and a one associated with a demolished building, possibly a blacksmiths known to have existed in this area. A well, walls and other minor elements associated with the nineteenth-century Kinloch Distillery were also observed to the north-west in Park Square.

Introduction

- 2.1 This data structure report sets out the results for the archaeological watching brief carried out during the Campbeltown Sewer Flood Relief Project, required to meet Planning Condition 8 and the archaeological specification set by WOSAS, archaeological advisers to the Argyll and Bute Council. The watching brief was conducted between late 2010 and August 2011.

Site Location

- 3.1 The development area requiring a watching brief comprising three areas, Main Street, St John Street and Park Square within Campbeltown, centered around NR 71865 20845, which is situated at the head of Campbeltown Loch towards the southern end of the Kintyre peninsula.

Historical Background

- 4.1 The site of the town was the original seat of the Scots Dalriadan kings, then bearing the name of Dalruadhain before the Kingdoms' seat of power was transferred to Dunadd.
- 4.2 The subsequent establishment of four ancient parishes, Kilkivan, Kilmichael, Kilkerran, and Kilchousland, were consolidated, under the name of Kinlochkerran, Ceann-loch or Lochhead, soon after the Reformation.
- 4.3 Campbeltown (name: NR 72 20) was founded by Archibald, 7th Earl of Argyll, who gave the town his name "Campbell's Town" and erected the castle of Lochhead (NR72SW 15) upon a site now occupied by the Castlehill Church in or about 1609, and simultaneously began to promote the settlement of Lowland incomers on ground nearby.
- 4.4 The settlement was formally erected a burgh of barony in 1667, and became a royal burgh in 1700. Little is known about the development of the early settlement. The earliest plan of the town dates from c 1760, by which time Earl Archibald's castle site had been cleared and redeveloped. The burgh was slow to develop, and even in the mid-eighteenth century had only one principle street, the wide market street known as High Street (now Main Street), with a series of minor thoroughfares between it and the Campbeltown Burn which ran roughly parallel to its north-west side, and ribbon development along Kirk Street to the south-east. Long Row to the north-west and parallel to Kirk Street at Shore Street and Bolgam Street by the harbour.
- 4.5 Elizabeth Tollemache, Duchess of Argyll prompted the building of the first harbour in the early 1700s. The harbour was of great importance to the burgh, and was enclosed by two quays by the mid-eighteenth century. What became known as the Old Quay near the foot of Main Street was begun in 1722, while the New Quay was started in 1754. On William Roy's Military Survey of Scotland Map published *circa* 1747-55 only Old Quay is represented (Plate 1). On William Douglas' plan published *circa* 1760, both quays are shown as being curvilinear, enclosing a D-shaped harbour, but by the second half of the nineteenth century, both were straight (Plates 2-3).

- 4.6 In the later nineteenth century, large areas of the foreshore were reclaimed from the sea, and developed, forming the modern Hall Street, Esplanade, and Kinloch Road. During this period Campbeltown established itself as an important centre for shipbuilding and Scotch whisky production, boasting no less than thirty four distilleries the town proclaimed itself “the whisky capital of the world”. The harbour was a busy fishing port its fishing fleet amounting to over 600 boats. A light railway linked the coal mines of the Machrihanish coalfield to the west with Campbeltown Harbour



Plate 1: Old Quay depicted on an extract from William Roy's Military Survey of Scotland published 1747-55

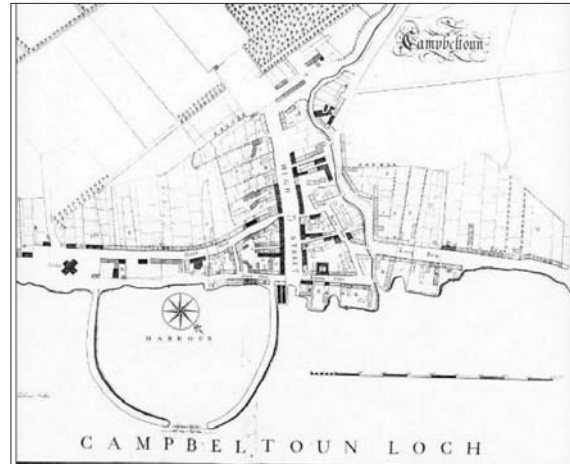


Plate 2: Campbeltown depicted on an extract from William Douglas' map published circa 1760



Plate 3: Campbeltown from an extract of George Langland's map of Argyllshire, published in 1801



Plate 4: Campbeltown Harbour from an extract of The Admiralty Charts of Scotland, published in 1840



Plate 5: Main Street shown on an extract from the Ordnance Survey large scale Scottish town plans, published 1865



Plate 6: Campbeltown depicted on an extract from the Ordnance Survey One-inch to the mile maps of Scotland - 2nd Edition, published 1896

Archaeological Potential

Main Street and Old Quay

- 5.1 The sewer upgrade along Main Street and in the vicinity of the Old Quay had the potential to reveal remains of early settlements within these areas. An earlier watching brief conducted by GUARD at the waterfront (Speller 1999) exposed a 6 m stretch of the Old Quay wall, dating to c 1722, at a depth of 1.5 m below the present-day surface (3.56 m OD). The western face and part of the core were exposed. Seven courses survived, giving a total surviving height of 1.5 m. The quay was constructed of granite, whinstone and sandstone, with an undressed rubble face. The facing wall of the quay was one stone thick (c.0.5 m wide). Bonding was of clay, slate and small pebble snecking. The Great Reform Act Plans and Reports map (1832) depicts the Old Quay wall around the north end of the sewage work (Plate 7)



Plate 7: Campbeltown depicted on an extract from the Great Reform Act Plans and Reports map, published 1832

Park Square/Lochend Street

- 5.2 At the corner between Longrow and Lochend Street the Ordnance Survey Map Six inch 1st edition (1843-1882) depicts the buildings for Kinloch distillery. Therefore the sewage works conducted in the Park end area had the potential to encounter these remains at its north-east side. All this area was reclaimed in the mid 19th century since the Great Reform Act Plans and Reports map of 1832 depict this area as part of the loch (Plate 7).

St John Street

- 5.3 As previously noted within the Written Scheme of Investigation, the areas of archaeological interest associated with St John Street lay between Hall Street and Shore Street. Hall Street was reclaimed from the sea in late nineteenth century and had the potential to reveal the original shore wall as well as eighteenth and nineteenth century buildings in the vicinity of Shore Street (Ordnance Survey large scale Scottish town plans, 1847-1895: Campbeltown 1865 CCLVII).

Aims and Objectives

- 6.1 The aims and objectives of the archaeological watching brief were to:
- establish the presence or absence of any archaeological remains during ground breaking works;
 - determine the character, extent and significance of any archaeological deposits encountered;
 - excavate and salvage any information possible from any significant features/sites encountered.

6.2 The objectives were therefore to:

- Conduct an archaeological watching brief (Figure 1), given the proximity of known archaeological remains, to establish the presence or absence of any archaeological remains, and their character, date and extent if surviving; determine the character, extent and significance of any archaeological deposits encountered; and excavate and salvage any information possible from any significant features encountered.
- Submit a report to data structure level for agreement to West of Scotland Archaeology Service (WOSAS), on completion of the watching brief and any resulting excavation works.

Fieldwork Methodology

- 7.1 The watching brief strategy included monitoring of all machine dug trenches during upgrade of sewer sections within Campbeltown and hand excavation and recording of any archaeological features encountered. Three sections of sewer upgrade required archaeological monitoring in the town: Main Street, St John Street and Park Square.
- 7.2 All significant archaeological features encountered were recorded. A full record of excavated features was made using a single context planning system using pro forma sheets, drawings and photographs. All archaeological features were photographed and drawn at an appropriate scale. All levels were tied into Ordnance Datum and the trenches accurately located with the National Grid.
- 7.3 All excavated feature fills were sampled, using bulk soil samples, for ecofactual and artefactual evidence.

Results

Park Square and Lochend Street (Figure 1 & 2 and Plates 8-12)

- 8.1 A large partially exposed rough cast concrete base [003 and 004] formed from sandstone fragments bound by a lime mortar was found below 1.5 m of demolition debris and landscaping deposits [002 and 001]. This appeared circular in plan and was sub-divided into two components by a slot trench [005].
- 8.2 Lying to the west of the concrete base a sandstone wall [009] and a concrete floor [010] forming a platform were found. The wall was built from red sandstone bound by lime mortar, aligned south-east to north-west and stood to a height of 1.6 m, this wall continued below the base of the trench.



Plate 8: Wall [009] and concrete floor (010), from the south-east



Plate 9: Building remains associated with the demolished Kinloch Distillery

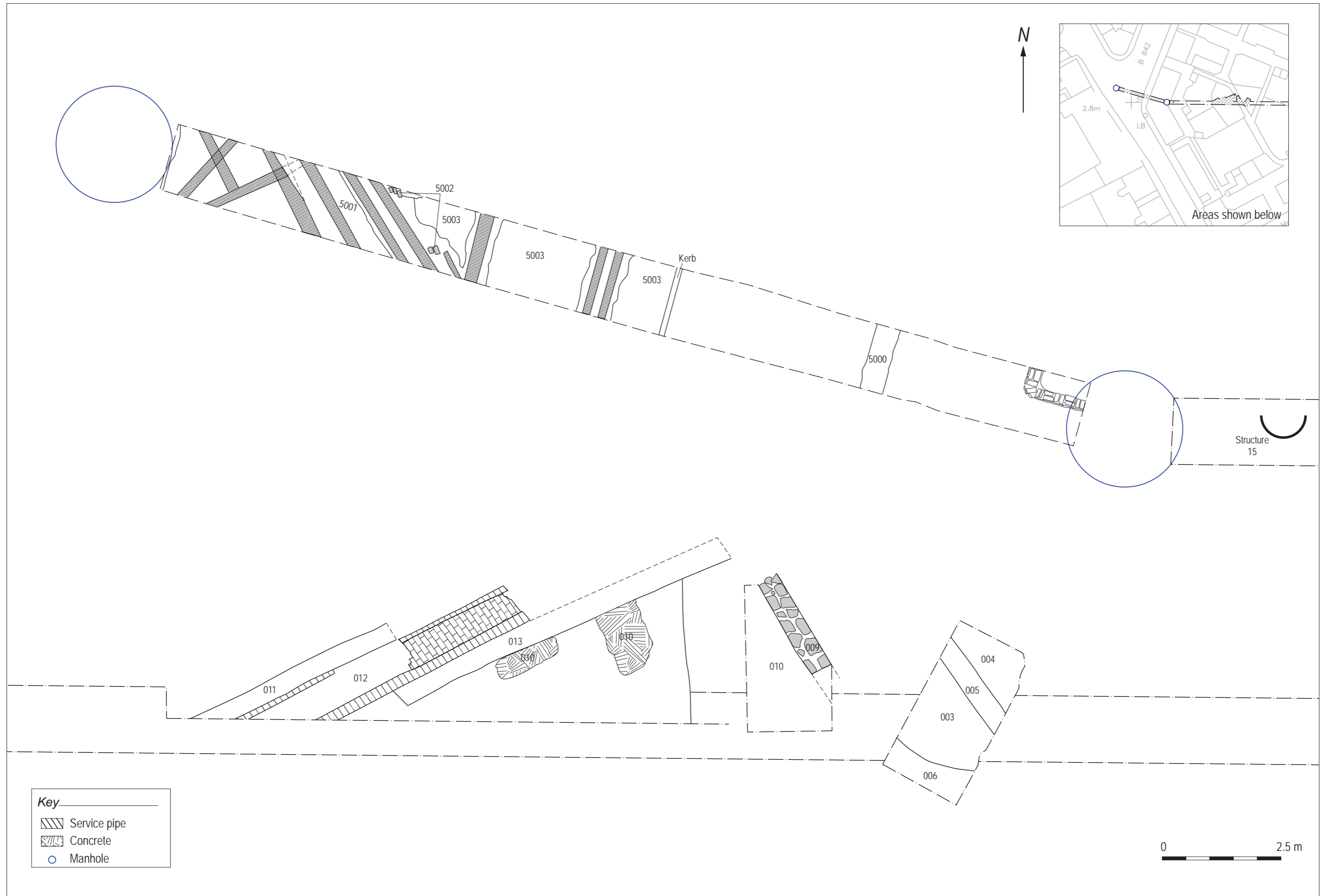


Figure 2: Plans from Lochend Street.

- 8.3 To the west of the platform further sandstone walls were recorded. Walls [011] and [013], wall [013] possibly a return of wall [009] to the south-west was found enclosing fragmentary remnants of concrete platform [010]. Wall [011] ran parallel to wall [013] at a distance of 0.9 m. Between these walls the remains of a brick surface [012] survived forming the remains of a corridor running between the walls. A further isolated remnant of a brick surface [014] was recorded to the west of these features.
- 8.4 A truncated brick built well [015] and a deep curvilinear brick structure [5009] were also unearthed during the Park Square works. The well built from mortar bound red unfrosted bricks measured 1 m in diameter and was excavated to a depth of 1.5 m. The curvilinear brick wall also built from red unfrosted brick was excavated to a depth of 0.8 m and was found with thin wooden planks lining the outside edge of the feature.



Plate 10: Well 015, from the north-east



Plate 11: Brick structure 5009, from the south

- 8.5 An extant red sandstone wall [5000] was visible forming a continuous circuit around the edge of Longrow and Lochend Street abutted by the pavement. This was built off a large concrete foundation [5008] and is assumed to be the remains of the external wall of Kinloch Distillery.
- 8.6 The ephemeral remains of a cobbled surface [5002] and a crude tarmac surface [5003]/[5007] found below the present tarmac road were recorded during the Lochend Street road crossing area of the works. This area was extremely disturbed by services.



Plate 12: Kinloch Distillery, depicted on an extract from the Ordnance Survey Large Scale Town Plans, published in 1865

Main Street (Figures 1 & 3 and Plates 13-17)

- 8.7 Much of the ground excavated here comprised infill deposits laid down to reclaim land during development of the harbour during the eighteenth and nineteenth centuries. A dark grey soil [022] was found towards the base of the trench containing large quantities of midden material

including numerous fragments of glass, pottery, leather items and animal bone fragments. This material probably accumulated as a result of rubbish being deposited along the shore line before the area was in-filled and extended to its present position. The survival of the midden would seem to suggest that it must have been deposited in an area where ingress of bay water did not occur.

- 8.8 Two substantial red sandstone walls were recorded along this part of the pipeline. The first wall [016] located towards the north-east end of the pipe trench was aligned north-east to south-west, built from quarried stone brought to course and bound by clay with occasional pinning stones. Occasional large boulders were incorporated into the fabric of the wall which was only visible in the south-east trench edge and survived to 7 courses in height and was recorded over a distance of 3 m (Plate 13).



Plate 13: Wall 016, from the north-west



Plate 14: Wall 042, from the north-east

- 8.9 The second wall [042] was again built from quarried sandstone with occasional large whinstone boulders incorporated into the lower courses of the wall. The wall was aligned north-west to south-east, was up to 0.6 m wide and was visible to a height of 1.12 m. The full depth of the wall was undetermined due to water flooding into the base of the trench during its removal.
- 8.10 Above wall [042] and extending to the north-east and south-west mortar and cobbled surfaces were recorded. Two mortar floors [030] and [032] were visible sandwiching what appeared to be an accumulation of trample [031] above the lower of the two mortar floors [032] these were abutted to the south-west by a cobbled surface [041] comprising beach cobbles bedded onto a thin layer of sand. The south-western extent of the cobbles was abutted by a further mortar floor [047].
- 8.11 Two culverts were recorded during the Main St works. The first culvert [035] was found in the trench excavated for manhole 3 and was truncated by numerous services. This was aligned north-west to south-east, built from red sandstone rubble bound by a pale brown lime mortar with gritty inclusions. No capstones were present but two walls survived each a single course of stone wide, and stood to three courses in height the culvert void measured 0.5 m² and was completely choked with a deposit of silt [038]. The walls of the culvert were found built partially over limestone slabs which formed the base of the culvert.



Plate 15: Manhole 3 showing disturbance by numerous services, from the south.



Plate 16: Culvert 035 in manhole 3 from the north-west

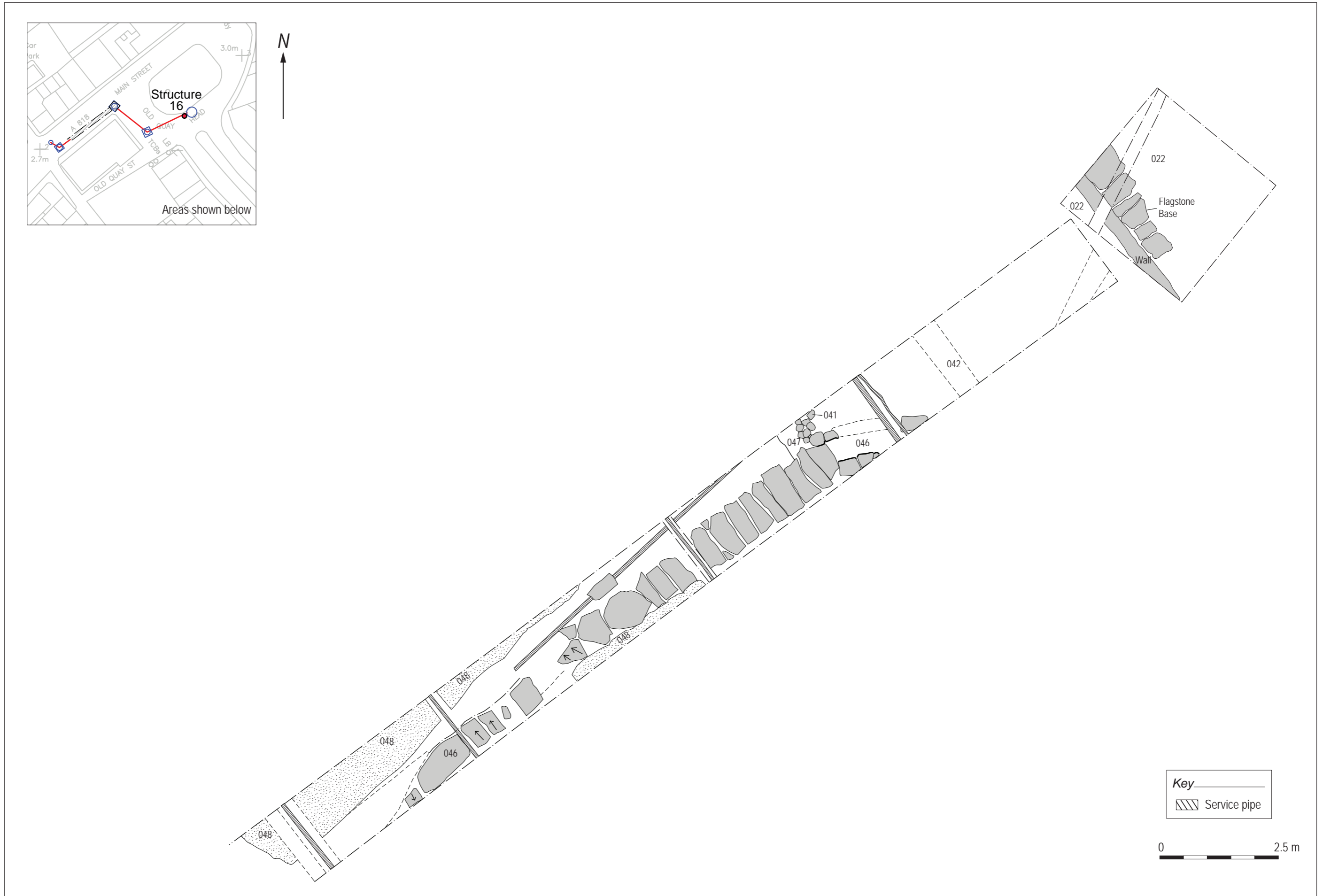


Figure 3: Plans from Main Street.

8.12 The second culvert [046] was aligned north-east to south-west and ran almost along the entire length of the trench between manholes 3 and 4, the culvert curved slightly towards the east at the north-eastern end and continued below the trench edge. This was built from red sandstone rubble bound by a pale brown lime mortar with gritty inclusions. Two walls each a single course of stone wide, stood four courses in height and were capped by sandstone or limestone slabs. The culvert void measured 0.56 m in height by 0.4 m wide and was again found completely choked by silt. The walls were built off limestone and red sandstone slabs which formed the base of the culvert. The capstones of the culvert protruded above a mortar floor [047] and [048] which was found either side of the culvert and appeared to be contemporary with it.



Plate 17: Culvert 046 and mortar and cobbled surfaces 047 and 041, from the north-east

St John St (Figures 1 & 4 and Plates 18-20)

8.13 A substantial red sandstone wall [065] bound by a lime mortar was recorded aligned north-west to south-east towards the southern end of St John St. This measured 2.06 m in length, 0.68 m widening at the wall base to 0.88 m wide and stood to a height of 1.9 m and was truncated by a modern service at its eastern end. The wall continued below the trench edge to the west. The construction was similar to wall [042] recorded during the Main Street phase of works and comprised large sandstone rubble poorly coursed with frequent pining and chocking stones filling voids between the larger stones. Remnants of lime mortar were visible bonding the wall though much of this appeared to have been eroded away.

8.14 Nineteenth century land reclamation infill deposits [057-064] containing pottery, glass and leather fragments were visible to the north of wall [065]. These overlay beach sands and gravels [073 and [074] which in turn overlay a stiff red natural clay [068] which was encountered inclining gently upwards towards the southern extent of the trench.

8.15 South of wall [065] at a distance of 5.8 m a further red sandstone wall [080] was encountered. This was aligned north-west to south-east built from roughly dressed quarried stone bound by lime mortar. A range of floor surfaces, greatly diminished due to truncation by modern service trenches, were encountered between these walls comprising a degraded paved and mortar floor [067] abutting a beach stone cobble floor [066], above a further beach stone cobble floor [079] covered by a deposit of coal dross [075] which yielded a fragment of slag small find number 059 suggesting possible metal working activity here (Plates 18-19). A truncated red brick wall or kerb [076] a single course wide built with unfrogged brick bound by lime mortar abutted the western extent of the cobbled surface [079], a degraded paved/mortar surface [077] lay to the west of the brick wall (Plate 20). A sequence of stratified mortar floors was recorded immediately to the north of sandstone wall [080]. This comprised a series of discontinuous laminated mortar surfaces each roughly 60 mm deep with frequent probable repairs made using red clay, the deposit as a whole measured 0.4 m deep. South of wall [080] a further sequence of cobbled and possible mortar surfaces, deposits [084-91] were recorded.

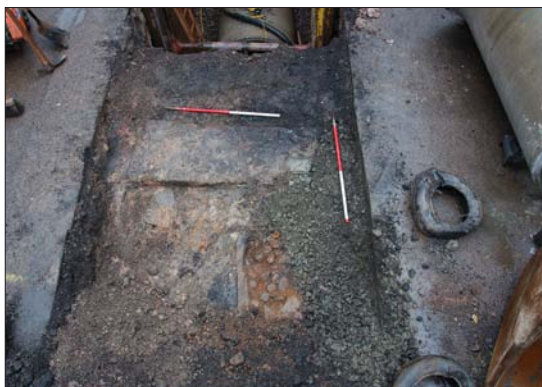


Plate 18: Sea wall 065, cobble 066 and degraded paved and mortar floor 067, from the south-west



Plate 19: Sea wall 065 from the north-west



Plate 20: Cobbled surface 079, brick partition/kerb 076 and paving 077 from the south-western

Discussion

- 9.1 The walls, well, concrete and brick founded structures recorded at Park Square are likely to be associated with the Kinloch Distillery, which was the oldest established in Campbeltown and formerly occupied this part of the study area. The distillery was built in 1823 and Lamb Colvill & Co. operated the license until 1919 when West Highland Malt Distilleries Ltd purchased it. In 1924 David MacCallum bought the distillery and shortly afterwards in 1926 it was closed. In 1928 the buildings were donated to the town and converted for use as housing. In 2007 the buildings were demolished except for the old distillery offices currently the Fiddlers Inn. For a long time previous to the distillery occupying the site had been used as Malt Houses, for the purpose of supplying malt to the numerous distillers who carried on their business on a small scale in the country round about. No features believed to be older than the nineteenth century were recorded during work here.
- 9.2 The walls recorded during the Main Street section of works are likely to be eighteenth century in date and are believed to represent part of the Old Quay wall and a contemporary sea wall both visible on George Langland's map of Argyllshire, published in 1801. Provisional assessment of midden deposits [022] from this area of excavations has revealed Scottish Post-Medieval Reduced Wares and large quantities of red wares, as well as eighteenth century wine bottles, leather and animal bones. The quay and sea walls were latterly subsumed during the nineteenth century as the harbour developed to its present position. The cobbled and mortar floors and culverts identified in this area are probably associated with the buildings depicted on the Ordnance survey map produced in 1896, which have since been demolished.
- 9.3 Further remains of the Old Quay wall were recorded in the St John St works along with stratified floor surfaces and a further wall which may represent building remains associated with a blacksmiths workshop known to have operated here and depicted as "Smithy" on the 1st edition Ordnance Survey map.

Recommendations

- 10.1 This archaeological watching brief in Campbeltown revealed a wide diversity of material and remains within the burgh including a substantial amount of evidence for the early sea defences of the town. It also revealed traces of life and business in Campbeltown from the early eighteenth century to the nineteenth century and as such has provided the potential to relate the story of how the burgh developed, its industries and people through time.
- 10.2 It is therefore recommended that a phase of post-excavation analysis of the remains and samples uncovered and publication of the results be conducted. This proposal will be drawn together in a post-excavation research design and costing for agreement with Black and Veatch on behalf of Scottish Water and WoSAS.
- 10.3 These recommendations are provided for guidance only. Final decisions on the nature and extent of any future archaeological work rest with WoSAS acting on behalf of the Planning Authority.

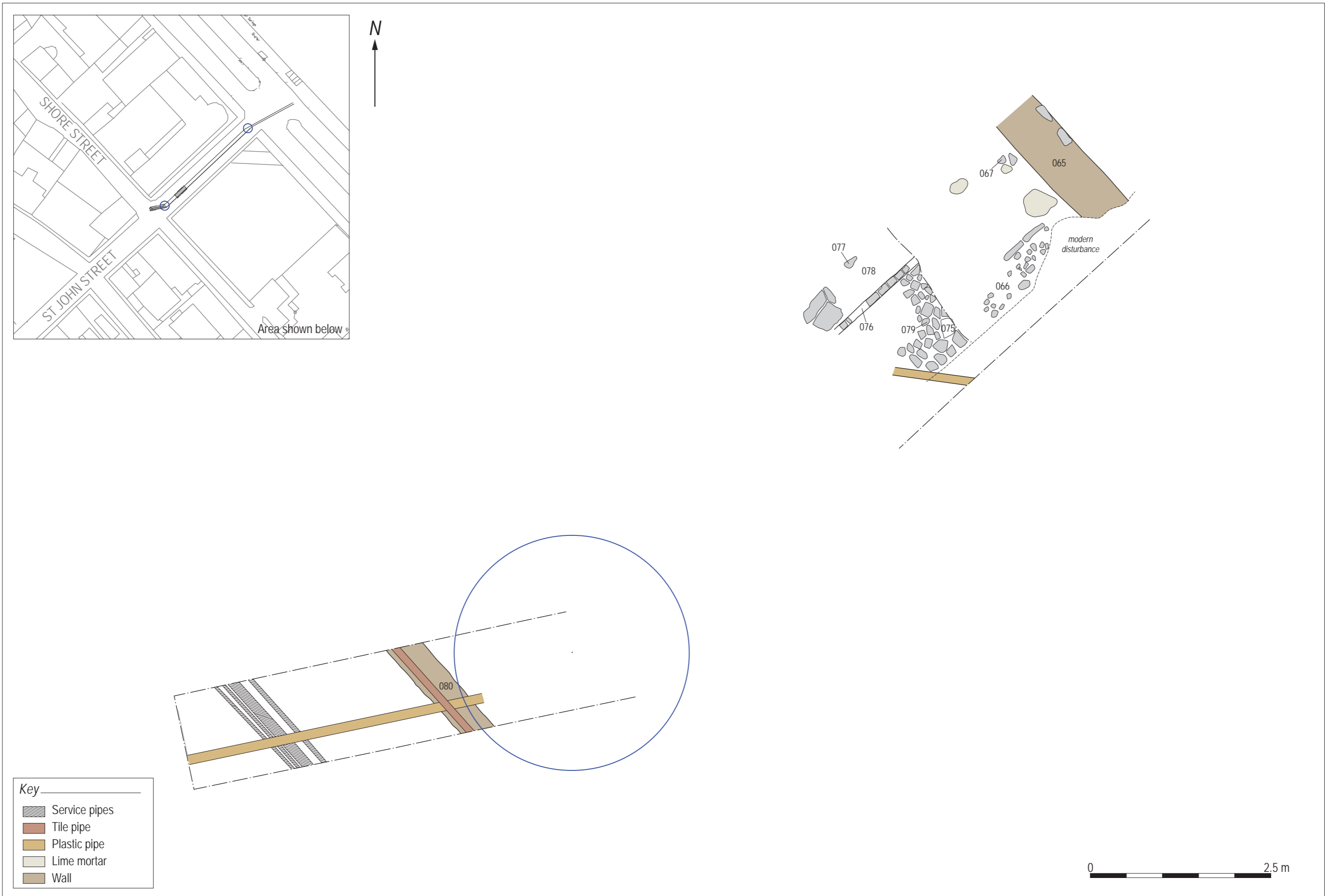


Figure 4: Plans from St Johns Street.

Acknowledgements

- 11.1 GUARD would like to thank Suzanne McAdam and the other members of the Black and Veatch team on site at Campbeltown for their advice and assistance. Technical and administrative support was provided from Aileen Maule, John Kiely and Jen Cochrane. The illustrations were produced by Gillian McSwan, who also desk top published this report. The project was managed for GUARD by John Atkinson.

**Campbeltown Wastewater
Quality Project
Watching Brief Data Structure Report**

Section 2: Appendices



www.guard-archaeology.co.uk

Appendices

Appendix A: Context Descriptions

Context	Area	Description	Dimensions				Above	Below
			Height (m)	Length (m)	Width (m)	Depth (m)		
001	Park Square	Deposit: A moist, firm, mid brown silt with frequent inclusions of demolished building debris. Interpreted as: Landscaping layer forming present ground surface.	-	-	-	0.45 – 1 m	002	-
002	Park Square	Deposit: A moist, firm pale brown sandy silt with frequent inclusions of angular medium sized stones. Interpreted as: Demolition debris.	-	-	-	1 m – 1.5 m	003	001
003	Park Square	Structure: Rough cast concrete with frequent inclusions of red sandstone and slate fragments bound by a pale grey brown lime mortar. Southern edge of the feature found with red sandstone rubble forming a crude curved kerb. In conjunction with 004 and 005 represents a feature associated with the demolished Kinloch distillery. Interpreted as: C19th building remnant associated with Kinloch Distillery.	-	1.6 (continued below trench edges)	0.95 (continued below trench edges)	0.26	007	002
004	Park Square	Structure: Rough cast concrete formed with frequent inclusions of red sandstone and slate fragments bound by a pale grey brown lime mortar. In conjunction with 003 and 005 represents a feature associated with the demolished Kinloch distillery. Interpreted as: C19th building remnant associated with Kinloch Distillery.	-	1.8 (continued below trench edges)	1.6 (continued below trench edges)	0.16	007	002
005	Park Square	Structure: Linear slot sub-dividing concrete platforms 003 and 004. Filled by a mid brown silt with inclusions of roof tile, coal and brick fragments with small rounded pebbles. Interpreted as: C19th building remnant associated with Kinloch Distillery.	-	1.9 (continued below trench edges)	0.46	0.1	007	002
006	Park Square	Deposit: A moist, firm, Black silt with frequent inclusions of pebbles and small coal fragments. Interpreted as: Possible floor surface C19th building remnant associated with Kinloch Distillery.	-	1.6 (continued below trench edges)	0.6 (continued below trench edges)	0.15	007	002
007	Park Square	Deposit: a moist, firm, orange brown clay with moderate inclusions of angular stones and ashy spreads. Interpreted as: Infill layer reclaimed land from Campbeltown Loch.	-	-	-	1.5	008	004
008	Park Square	Deposit: A moist, firm blue/grey clay with inclusions of limestone fragments. Interpreted as: Natural clay.	-	-	-	-	007	-
009	Park Square	Structure: Sandstone wall aligned south-east to north-west built with red sandstone rubble six courses in height two courses wide. Stone size 300 mm x 200 mm x 300 mm <> bound by a pale brown lime mortar. Abutted by concrete floor 010 to the south-west. Interpreted as: C19th wall associated with Kinloch Distillery.	1.6	3 (continued below trench edges)	0.44	-	007	002

Context	Area	Description	Dimensions				Above	Below
			Height (m)	Length (m)	Width (m)	Depth (m)		
010	Park Square	Structure: Concrete floor abutting the south-western edge of wall 009. Interpreted as: C19th building remnant associated with Kinloch Distillery.	-	2.9	1.6	0.05	-	002
011	Park Square	Structure: Sandstone wall built with red sandstone rubble, stone size 220 mm x 200 mm x 100 mm <> bound by a pale brown lime mortar. Aligned south-west to north-east abutted by brick floor 012 to the south-east. Interpreted as: C19th wall associated with Kinloch Distillery.	-	4.5 (continued below trench edges)	0.5	-	-	002
012	Park Square	Structure: Brick floor comprising red unfrogged brick laid on bed with yellow unfrogged brick laid on bed forming a border along either side of the floor, the whole bound by a degraded mortar. Brick size 250 mm x 110 mm x 60 mm. Interpreted as: Truncated C19th Brick floor forming a corridor between walls 011 and 013 associated with Kinloch Distillery.	-	5.5 (continued below trench edges)	0.9	0.06	007	002
013	Park square	Structure: Sandstone wall built with red sandstone rubble, stone size 220 mm x 180 mm x 70 mm <> bound by a pale brown lime mortar. Aligned south-west to north-east abutted by brick floor 012 to the north-west may represent a return of wall 009. Interpreted as: C19th wall associated with Kinloch Distillery.	-	7.5 (continued below trench edges)	0.5	-	007	002
014	Park Square	Structure: Brick floor remnant comprising yellow unfrogged brick laid on bed bound by a degraded mortar. Brick size 240 mm x 120 mm x 80 mm. Interpreted as: Truncated C19th Brick floor remnant associated with Kinloch Distillery.	-	1.45 (continued below trench edges)	0.85 (continued below trench edges)	0.08	-	002
015	Park Square	Structure: Truncated circular brick structure around 1 m in diameter, built with red unfrogged brick laid lengthways across the wall a single course wide, bound by mortar. Brick size 240 mm x 120 mm x 80 mm. Interpreted as: Truncated well associated with Kinloch Distillery.	-	1 diameter	-	1.5 (excavated)	008	002
016	Main St	Structure: Red sandstone wall, aligned north-east to south-west, built from quarried stone brought to course and bound by clay with occasional pinning stones. Occasional large boulders were incorporated into the fabric of the wall which was only visible in the south-east trench edge and survived to 7 courses in height. Interpreted as: Wall forming part of Old Quay.	1.55	3 (continued below trench edge)	Circa 0.5 but widened towards the base	-	-	029
017	Main St	Deposit: Modern tarmac forming present ground surface.	-	-	-	012	018/ -028	-
018	Main St	Deposit: A moist, firm, yellow brown sand with frequent inclusions of small rounded gravel. Interpreted as: Earlier road metal pre dating tarmac.	-	-	-	0.28-0.35	019	017

Context	Area	Description	Dimensions				Above	Below
			Height (m)	Length (m)	Width (m)	Depth (m)		
019	Main St	Deposit: A moist, firm orange brown sand with moderate inclusions of building debris, slate mortar and red sandstone fragments. Interpreted as: Infill layer.	-	-	-	0.45	021	018
020		Context unused	-	-	-	-	-	-
021	Main St	Deposit: A moist, firm, mid grey brown silty sand with frequent inclusions of small rounded stones. Interpreted as: Infill layer.	-	-	-	0.28-0.35	025	019
022	Main st	Deposit: a moist, firm, dark grey black sand with discontinuous lenses of silt. Moderate inclusions of large medium and small angular and rounded red sandstone and limestone fragments 300 mm<, slate and brick fragments and moderate inclusions of marine shell. Frequent finds of leather, pottery, glass and animal bone fragments were recovered from this layer. Interpreted as: Midden rich layer overlying the original seabed contaminated by a variety of infill deposits.	-	-	-	Up to 1.2 m	053	024
023		Context unused.	-	-	-	-	-	-
024	Main St	Deposit: A moist, firm, pale yellow sand devoid of conspicuous inclusions. Interpreted as: Infill layer	-	-	-	0.35-0.4	22	025
025	Main St	Deposit: A moist, firm, orange brown sand with frequent inclusions of small angular and rounded stones 120 mm< occasional animal bone and ceramic fragments. Interpreted as: Infill layer.	-	-	-	0.3	024	021
026	Main St	Deposit: Frequent sub-rounded and sub-angular stones forming a discrete dump towards the top of deposit 022 initially perceived as a possible structural feature closer examination suggested it was more likely dumped material. Interpreted as: Infill layer.	-	1.5	1	0.38	022	027
027	Main St	Deposit: A moist, firm, dark grey black silty sand with occasional shell fragments small stones and occasional pottery sherds. Interpreted as: Infill layer.	-	-	-	0.12	026	024
028	Main St	Deposit: a moist, firm, blue grey sand with frequent inclusions of small angular stones 60 mm<. Interpreted as: Road metal below tarmac.	-	-	-	0.2	029	017
029	Main St	Deposit: A moist, firm, reddish brown sand with frequent inclusions of sandstone fragments 60 mm< Truncated by services. Interpreted as: Road metal below limestone road metal 028.	-	-	-	0.22	030	028
030	Main St	Deposit: A moist, firm pale grey brown Lime mortar with moderate inclusions of small rounded stones 5 mm<. Truncated by services. Interpreted as: Mortar floor.	-	3.7	1.6 (continued below trench edge to west)	0.05	031	029

Context	Area	Description	Dimensions				Above	Below
			Height (m)	Length (m)	Width (m)	Depth (m)		
031	Main St	Deposit: A moist, firm, dark brown silty sand with moderate inclusions of charcoal flecks. Truncated by services. Interpreted as: Trample layer between mortar floors 030 and 032.	-	3.7	1.6 (continued below trench edge to west)	0.04	032	030
032	Main St	Deposit: A moist, firm pale grey brown Lime mortar with moderate inclusions of small rounded stones 5 mm<. Truncated by services. Interpreted as: Mortar floor.	-	3.7	1.6 (continued below trench edge to west)	0.05	033	031
033	Main St	Deposit: A moist, firm, mid grey brown sand with dark mottling. Moderate inclusions of charcoal flecks and medium sized angular stones. Truncated by services. Interpreted as: Infill layer possibly associated with a building part of which may comprise wall 042.	-	10	1.6 (continued below trench edge to west)	0.55	022	032
034	Main St	Deposit: A moist, firm, concreted, pale reddish brown lime mortar with frequent small red sandstone fragments 50 mm<. Interpreted as: Possibly a continuation of mortar floors 030 and 032 to the east of a service pipe although the interruption by the service pipe makes the relationship unclear.	-	-	-	0.15	033	034
035	Main St	Structure: A truncated culvert built from red sandstone rubble bound by a pale brown lime mortar with gritty inclusions. No capstones present, two walls remain each a single course of stone wide, stone size 650 mm x 350 mm x 300 mm<. Walls stand 3 courses in height ,culvert void 0.5 m ² Walls built occasionally off limestone slabs which form the base of the culvert. Interpreted as: C19th culvert.	0.5	3.5 (continued below trench edge to east and west)	1.25	-	033	039
036	Main St	Cut: Visible along the northern side of culvert 035 may be associated with modern services of which there were a plethora in this area.	-	N/A	N/A	0.5	022	040
037	Main St	Deposit: A moist, loose, orange brown mottled sand and gravel devoid of conspicuous inclusions. Interpreted as: Basal fill of culvert 035.	-	-	-	Up to 0.35	035	038
038	Main St	Deposit: a moist, soft, dark grey silt, devoid of conspicuous inclusions. Interpreted as: Upper fill of culvert 035.	-	-	-	Up to 0.35	037	039
039	Main St	Deposit: A moist, firm, dark orange brown sand and gravel with moderate inclusions of red sandstone and limestone fragments. Interpreted as: Backfill of service trenches.	-	-	-	0.7	038	028
040	Main St	Deposit: A moist, firm, mid orange brown sand and gravel with moderate inclusions of red sandstone and limestone fragments. Interpreted as: Infill layer.	-	-	-	0.52	022	039

Context	Area	Description	Dimensions				Above	Below
			Height (m)	Length (m)	Width (m)	Depth (m)		
041	Main St	Structure: Cobbled surface comprising small rounded beach stones, stone size 150 mm x 120 mm x 100 mm bedded into a thin layer of clean pale brown sand. Interpreted as: Cobbled surface.	-	4	1.65	0.2	033	029
042	Main St	Structure: Sandstone wall built with red sandstone rubble, stone size 450 mm x 500 mm x 170 mm< bound by a pale brown lime mortar. Aligned North-west to south-east. Interpreted as: C18th sea wall.	1.12	1.6 m (continued beneath trench edges to east and west)	0.60	-	022	033
043	Main St	Deposit: Same as 033.	-	-	-	-	-	-
044	Main St	Deposit: Same as 022.	-	-	-	-	-	-
045	Main St	Deposit: Same as 022.	-	-	-	-	-	-
046	Main St	A truncated culvert built from red sandstone rubble bound by a pale brown lime mortar with gritty inclusions. Two walls each a single course of stone wide, 0.35 m, stone size 450 mm x 350 mm x 300 mm<. Walls stand 4 courses in height and were capped by sandstone or limestone slabs, culvert void 0.56 m in height by 0.4 m wide. Walls built off limestone and red sandstone slabs which form the base of the culvert. Interpreted as: C19th culvert.	0.66	(continued below trench edges)	1.1	-	033	041
046b	Main St	Deposit: A moist, soft, dark grey silt devoid of conspicuous inclusions. Interpreted as: Fill of culvert 046	-	-	-	0.46	Within 046	Within 046
047	Main St	Deposit: A dry, firm, pale brown grey lime mortar with moderate inclusions of small grits and very occasional shell fragments and a layer of ashy trample with coal dross overlying it 0.05 m deep. Continued below trench edge to the west and abutted cobbles 041 to the north-east and culvert 046 to the east. Interpreted as: Mortar floor.	-	-	-	0.07	033	029
048	Main St	Deposit: A dry, firm, pale brown grey lime mortar with moderate inclusions of small grits. Continued below trench edge to the east and abutted culvert 046 to the west and east. Interpreted as: Mortar floor probably part of 047.	-	-	-	0.05	049	029
049	Main St	Deposit: A moist, firm dark brown silty sand with moderate inclusions of small angular and rounded stones, gravel and grits and occasional small coal and charcoal fragments. Interpreted as: Possible trample layer associated with building construction.	-	-	-	0.12	050	048
050	Main St	Deposit: A moist, firm, orange sand and gravel comprising small angular and rounded stones devoid of conspicuous inclusions. Interpreted as: Infill/levelling layer associated with building construction.	-	-	-	0.14	052	049

Context	Area	Description	Dimensions				Above	Below
			Height (m)	Length (m)	Width (m)	Depth (m)		
051	Main St	Deposit: A dry, firm, mid brown beach sand and gravel stone size 80 mm<. Interpreted as: Road metal below 028.	-	-	-	0.12-0.25	048	028
052	Main St	Deposit: A moist, firm, grey brown silty sandy clay with frequent red sandstone fragments, moderate slate fragments occasional lime mortar and marine shell fragments and small coal fragments. Pottery and animal bone fragments were recovered from this layer during excavation. Interpreted as: Infill layer.	-	-	-	0.3-0.4	022	050
053	Main St	Deposit: a moist, firm, dark grey brown silty sand with frequent small, medium rounded stones and gravels. Interpreted as: Beach sand and gravel.	-	-	-	0.35	054	022
054	Main st	Deposit: A moist, firm, orange brown clay with moderate inclusions of small and large limestone fragments. Interpreted as: Natural clay.	-	-	-	Up to 0.55	-	053
055	Main St	Deposit: A moist, firm, dark brown grey silty sand and gravel with frequent inclusions of small and medium 200 mm< sandstone fragments, moderate slate fragments and marine shell fragments occasional brick fragments. Interpreted as: Backfill of service trenches.	-	-	-	-	-	028
056	St John St	Deposit: Tarmac.	-	-	-	0.11	057	-
057	St John St	Deposit: A moist, firm silty sand with frequent sandstone rubble. Interpreted as: Infill layer.	-	-	-	0.25	058	057
058	St John St	Deposit: A moist, firm, black silt with ashy lenses. Interpreted as: Infill layer.	-	-	-	0.1- 0.15	059	057
059	St John St	Deposit: A moist, firm, mid to dark brown silt with frequent inclusions of ash and building debris, ceramic drain fragments and cobbles. Moderate inclusions of midden material, glass shell and ceramic fragments. Interpreted as: Infill layer.	-	-	-	0.25-0.35	060	058
060	St John St	Deposit: A moist, firm, black silt with ashy lenses. Interpreted as: Infill layer.	-	-	-	0.1	061	059
061	St John St	Deposit: A moist, firm, orange brown silt with frequent inclusions of cobbles. Interpreted as: Infill layer.	-	-	-	0.25-0.3	062	060
062	St John St	Deposit: A moist, firm, black silt with frequent rubble fragments and cobbles. Interpreted as: Infill layer.	-	-	-	1	063	061
063	St John St	Deposit: A moist, firm, grey clay. Interpreted as: Natural.	-	-	-	0.3	068	062
064	St John St	Deposit: Yellow sandstone fragments, red brick fragments and slate fragments. Interpreted as: Demolition debris forming infill layer.	-	-	-	0.27-0.5	060	059

Context	Area	Description	Dimensions				Above	Below
			Height (m)	Length (m)	Width (m)	Depth (m)		
065	St John St	Structure: Sandstone wall built with large red sandstone quarried rubble poorly coursed, stone size 720 mm x 480 mm x 380 mm< with frequent pinning and chocking stones filling voids between larger stones all bound by a pale brown lime mortar. Aligned North-west to south-east measured 2.06 m long x 0.68 m wide 0.88 m at wall base x 1.9 m in height. Interpreted as: C18 th sea wall.	1.9	2.06	0.68	-	068	057
066	St John St	Structure: Random beach cobbles bedded onto a layer of clean orange sand western edge of cobbles abuts a red sandstone kerb aligned north-south. Stone size 80 mm-220 mm Measured 1.4 m long x 0.6 m wide truncated x 0.22 m deep. Interpreted as: Cobbled surface.	-	1.4	0.6	0.22	075	057
067	St John St	Structure: A moist, firm, pale brown/ yellow lime mortar with areas of clay and occasional flat stones embedded into the top of the deposit, abuts cobbled surface 066 to the east. Measured 1 m long x 1.24 m wide x 0.06 m deep. Interpreted as: Degraded floor surface.	-	1	1.24	0.06	075	057
068	St John St	Deposit: A moist, firm, orange clay devoid of conspicuous inclusions. Interpreted as: Natural clay.	-	-	-	0.2+	-	063
069	St John St	Deposit: A moist, firm, orange sandy clay with moderate inclusions of small rounded and sub-rounded beach stone. Interpreted as: Redeposited natural possibly forming a floor repair.	-	-	-	0.15	070	057
070	St John St	Deposit: A moist, firm, pale brown silt with lenses of ash and coal. Interpreted as: Possible build up of trampled material.	-	-	-	0.1	071	069
071	St John St	Deposit: A moist, firm, dark orange/ brown sand with frequent inclusions of small rounded stones and shell fragments. Interpreted as: Levelling infill layer below floor surfaces south of sea wall 065.	-	-	-	0.48	072	070
072	St John St	Deposit: A pale brown/grey lime mortar. Interpreted as: Dumped material possibly associated with the construction of wall 065.	-	-	-	0.1	073	071
073	St John St	Deposit: A moist, firm, pale yellow/ brown sand with tiny shell fragments and occasional gravel. Interpreted as: Beach sand.	-	-	-	0.35	074	072
074	St John St	Deposit: A moist, firm, grey sand. Interpreted as: Lower layer of contaminated beach sand.	-	-	-	0.45	068	073
075	St John St	Deposit: A moist, firm, dark grey black silty sand with frequent coal fragments and ash. Measured 1.4 m l x 1 m w x 0.1 m d. Interpreted as: Trampled layer associated with blacksmith.	-	-	-	0.1	079	066

Context	Area	Description	Dimensions				Above	Below
			Height (m)	Length (m)	Width (m)	Depth (m)		
076	St John St	Structure: Orange/red unfrosted brick and red sandstone fragments a single course wide laid lengthways on bed forms a partition or kerb between floor deposits 077 and 079. Measured 1.6 m long x 0.1 m wide x 0.15 m in height.	-	-	-	0.15	071	067
077	St John St	Structure: Red sandstone rubble slabs laid on bed forms a rectilinear truncated remnant of paving. Stone size 380 mm x 300 mm x 100 mm. Measured 1.2 m long x 0.55 m wide x 0.1 m deep. Interpreted as: Paving remnant.	-	-	-	0.1	071	067
078	St John St	Deposit: A moist, firm, dark brown/grey silty sandy clay with moderate coal and ash. Measured 0.08 m deep. Interpreted as: Possible build up of trampled material.	-	-	-	0.08	071	077
079	St John St	Structure: Cobbled surface formed from rounded beach stone set into a pale brown re-deposited beach sand. Stone size 320 mm x 180 mm x 120 mm covers an area measuring 0.8 m long x 1.25 m wide x 0.12 m deep. Interpreted as: Cobbled floor.	-	-	-	0.12	071	075
080	St John St	Structure: Red sandstone wall built from quarried random stone brought roughly to course and bound by a pale brown lime mortar. Frequent pining and chocking stones, wall aligned north-west to south-east. Stone size 300 mm x 200 mm x 200 mm Measured 1.5 m long (excavated) x 0.45 m wide x 3 courses 0.5 m in height. Basal course protrudes 0.1 m from wall base. Interpreted as: Wall possibly associated with blacksmiths workshop.	0.5	1.5	0.45	-	068	Service pipe
081	St John St	Deposit: A moist, firm green grey gravel. Interpreted as: Road metal.	-	-	-	0.06	082	057
082	St John St	Deposit: A moist, firm orange compact gravel. Interpreted as: Road metal.	-	-	-	0.07	093	081
083	St John St	Deposit: A moist, firm, compact black coal dross layer. Interpreted as: Trample layer of coal dross.	-	-	-	0.08	084	082
084	St John St	Deposit: A moist, firm, pale brown lime mortar. Interpreted as: Mortar floor.	-	-	-	0.06	085	083
085	St John St	Structure: Medium and small beach cobbles 0.15 m < bedded onto clean sand deposit 086. Interpreted as: Cobbled surface.	-	-	-	0.15	086	084
086	St John St	Deposit: A moist, firm pale brown sand. Interpreted as: Bedding for cobbles 085.	-	-	-	0.15	087	085
087	St John St	Deposit: A moist, firm, dark brown silty sand and gravel. Interpreted as: Possible build up of trampled material.	-	-	-	0.1	088	086
088	St John St	Deposit: A pale brown sand with inclusions of pea gravel. Interpreted as: Possible floor surface.	-	-	-	0.07	089	087

Context	Area	Description	Dimensions				Above	Below
			Height (m)	Length (m)	Width (m)	Depth (m)		
089	St John St	Deposit: A moist, firm, dark brown silty sand with ash and charcoal. Interpreted as: Possible build up of trampled material.	-	-	-	0.06	090	088
090	St John St	Deposit: Pale brown lime mortar. Interpreted as: Possible mortar floor.	-	-	-	0.07	091	089
091	St John St	Deposit: A moist, firm grey/brown silt with frequent small rounded stones ash and charcoal. Interpreted as: Possible gravel floor.	-	-	-	0.12	092	91
092	St John St	Deposit: Beach sand and gravel with occasional sandstone fragments towards the base of this layer. Interpreted as: Possible infill levelling layer.	-	-	-	0.2	068	091
093	St John St	Deposit: A laminated deposit of discontinuous layers of lime mortar and pale brown clay, thin seams of black trample dividing layers horizontally. Interpreted as: Sequence of mortar floors with clay repairs.	-	-	-	0.4	-	082
5000	Lochend St	Structure: Extant sandstone wall built from red sandstone rubble and roughly dressed blocks bound by lime mortar. Low wall fronts onto Longrow and Lochend Street. Interpreted as: Wall associated with demolished Kinloch Distillery.	0.3	33	0.55	-	-	-
5001	Lochend St	Structure: Brick surface comprising red and yellow bricks laid on bed and set into a thin layer of concrete. Bricks measured 220 mm x 105 mm x 90 mm and stamped TOM HURL GLASGOW. Interpreted as: Possibly laid to mark position of services or repair to road after insertion of services.	-	2.3 (continues below trench to north and south)	0.88	0.105	Tarmac	5004
5002	Lochend St	Structure: Putative remnant of cobbled surface comprises rare whinstone setts set on end and bedded into a degraded layer of lime mortar 5006. Set size 270 mm x 150 mm x 100 mm. Interpreted as: Ephemeral remnant of cobbled surface.	-	-	-	-	5006	5003
5003	Lochend St	Deposit: A dry very compact layer of small stones 60mm< with occasional larger stones 400 mm< encased in a black bitumen. Larger stones appear towards the base of this layer. Interpreted as: Crude tarmac layer below existing tarmac and over and around cobbles 5002.	-	6	1.6 (continues beyond trench edges)	0.28	5002	Tarmac
5004	Lochend St	Deposit: A moist, loose grey brown orange gravel with moderate inclusions of brick fragments, tile fragments and occasional tarmac or fragments of deposit 5003. Interpreted as: Service trench backfill.	-	-	-	-	-	-
5005	Lochend St	Deposit: A moist, loose, orange yellow coarse sand and gravel towards base of pipe trench. Interpreted as: Natural beach gravel.	-	-	-	Up to 1.5	-	5004
5006	Lochend St	Deposit: A dry, firm, pale grey brown lime mortar with frequent inclusions of small round stones 4 mm<. Interpreted as: Bedding layer for cobbles 5002.	-	-	-	0.01	5005	5002

Context	Area	Description	Dimensions				Above	Below
			Height (m)	Length (m)	Width (m)	Depth (m)		
5007	Lochend St	Deposit: A dry, firm dark grey black layer of large stones 450 mm x 300 mm x 250 mm encased in bitumen graded by a similar layer with smaller stone 5003. Interpreted as: Earlier road surface.	-	5	1.6 (continues below trench edges)	0.35	5005	5003
5008	Lochend st	Structure: Concrete foundation for extant wall 5000.	0.21	33	1.23	-	-	5000
5009	Lochend St	Structure: Curvilinear brick structure built with red unfrogged brick laid on bed two courses wide bound by lime mortar. Brick size 200 mm x 120 mm x 80 mm. The outside edge of the feature was covered by vertically set narrow timber beams. Interpreted as: C19th building remnant associated with Kinloch Distillery.	0.8	2.6	0.3	-	-	-

Appendix B: Photographic Record

Digital Film No 1

No	Area	Description	From
1		Registration shot	
2	Park Square	General view of demolition debris	E
3	Park Square	General view of structures 003, 004, 005 and 006	SW
4	Park Square	General view of structures 003, 004, 005 and 006	W
5	Park Square	General view of structures 003, 004, 005 and 006	S
6	Park Square	E facing section across structures 003, 004, 005 and 006	E
7	Park Square	SE facing section through deposit 004	SE
8	Park Square	General working shot	S
9	Park Square	E facing section through deposits 001, 002, 006 and 007	E
10	Park Square	Wall 009 and concrete floor 010	NW
11-12	Park Square	Wall 009 and concrete floor 010	NE
13	Park Square	NE facing elevation of wall 009	E
14	Park Square	General view wall 009 and concrete floor 010	SE
15	Park Square	Extant building remains	NW
16	Park Square	General view of structures 011, 012 and 013	SW
17	Park Square	General view of structures 011, 012 and 013	N
18	Park Square	General view of structures 011, 012 and 013	NE
19+21	Park Square	General working shots	
22	Park Square	Brick floor remnant 014	S
23	Park Square	Brick floor remnant 014	SE
24-25	Park Square	Brick well 015	NE

Digital Film No 1b

No	Area	Description	From
1	-	Registration shot	-
2-3	Lochend St	General view of Lochend Street area	N
4-5	Lochend St	Wall 5000	S
6-9	Lochend St	Brick surface 5001	S
10-12	Lochend St	Brick surface 5001	N
13-14	Lochend St	General view hand digging to locate services	E
15-16	Lochend St	Cobbles 5002	SW
17-18	Lochend St	View of truncation by services	SE
19-20	Lochend St	View of truncation by services	E

No	Area	Description	From
21-23	Lochend St	General view Lochend St works	W
24-25	Lochend St	Natural gravel 5005 below deposit 5004	S
26-27	Lochend St	General view of deposit 5005 towards east end of trench	SW
28-29	Lochend St	Deposit 5007	S
30-35	-	Damage to vehicle	
36-37	Lochend St	Natural gravel 5005	W
38-39	Lochend St	Road deposits 5003 and 5007	N
40-47	-	Damage to van	-
48-49	Lochend St	General working shots	E
50-51	Lochend St	Wall footings 5008	SE
52-53	Lochend St	General working shots	-
54-56	Lochend St	Wall footings 5008	SE
57-59	Lochend St	Structure 5009	S

Digital Film No 2

No	Area	Description	From
1	-	Registration shot	-
2-5	Main Street	General views of Old Quay wall 016	W
6	Main Street	General view of Old Quay wall 016	N
7	Main Street	West facing section of pipe trench showing position of wall 016	W
8-9	Main Street	West facing section of pipe trench showing position of wall 016	NW
10	Main Street	Working shot	NW
11-15	Main Street	Wall 016 after further excavation of pipe trench	W
16	Main Street	View of deposit 022	N
17-18	-	View of vehicle damage	-
19	Main Street	General view of infill deposits	W
20	Main Street	General view of Main St works showing present position of Cross	S
21	Main Street	General view of infill deposits	W
22	Main Street	General view of Main st works	S
23-29	Main Street	General working shots	-
30-33	Main Street	East facing section through infill deposits	E
34-35	Main Street	West facing section through infill deposits	W
36-37	Main Street	Deposit 022 towards base of pipe trench	S
38-39	Main Street	General view of Main St works	NE
40-41	Main Street	West facing section through infill deposits	W
42-43	Main Street	Deposit 018 after removal of tarmac	WSW
44	Main Street	General view of services in pipe trench towards manhole 3	E

Digital Film No 3

No	Area	Description	From
1	-	Registration shot	-
2-3	Main Street	Deposit 022 at the end of pipe trench to manhole 3	E

Digital Film No 4

No	Area	Description	From
1	-	Registration shot	-
2-3	Main Street	General view of manhole 2 during insertion of sheet piles	E
4-5	Main Street	General view of manhole 2 during insertion of sheet piles	N
6-7	Main Street	General view during excavation of manhole 2 trench during excavation	SE
8-11	Main Street	Deposit 026 overlying deposit 022	W
12-13	Main Street	Deposit 026 overlying deposit 022	N
14-15	Main Street	Deposit 026 overlying deposit 022	E
16-17	Main Street	Midden rich layer 022 towards the base of manhole 2 trench	SE

Digital Film No 5

No	Area	Description	From
1	-	Registration shot	-
2-5	Main Street	South facing section manhole 3 trench	S
6-9	Main Street	North facing section manhole 3 trench	N
10-11	Main Street	View of services encountered in manhole 3 trench	SE
12-15	Main Street	North wall of culvert 035	E
16-19	Main Street	Culvert 035	NE
20-21	Main Street	Deposits 022 and 040 in manhole 3 trench	S
22-23	Main Street	Culvert 035	E
24-25	Main Street	Culvert 035	NE
26-27	Main Street	Culvert 035	N
28-29	Main Street	Culvert 035	NE
30-31	Main Street	Culvert 035 East facing section	E
32-33	Main Street	South facing section deposit 022	S
34-35	Main Street	Elevation of south wall of culvert 035	N
36-37	Main Street	General view during removal of tarmac pipe trench from manhole 3-4	N
38-39	Main Street	Mortar surfaces 030 and 032	E
40-42	Main Street	East facing section showing mortar surfaces 030 and 032	SE
43-44	Main Street	West facing section showing mortar surface 034	NW
45-46	Main Street	Cobble surface 041	E
47-48	Main Street	General view Main St works	N
49-51	Main Street	General working shots	-
52-56	Main Street	Wall 042	N
57-61	Main Street	Culvert 046	W
62	Main Street	Culvert 046 and cobbles 041	NE
63	Main Street	Culvert 046 and cobbles 041	E
64	Main Street	Culvert 046 and cobbles 041	NE
65-66	Main Street	Water Ingress in pipe trench between manholes 3 and 4	N
67	Main Street	General view during removal of wall 042	SW

Digital Film No 6

No	Area	Description	From
1	-	Registration shot	-
2-9	Main Street	Culvert 046, mortar floor 047 and cobbles 041	Ne
10-11	Main Street	East facing section showing disturbance by services	NE
12-13	Main Street	West facing section showing disturbance by ceramic drain	NW
14-15	Main Street	General view showing position of wall 042	W
16-17	Main Street	Deposit 022 towards base of trench	NW
18-19	Main Street	Road metal 028 below tarmac	N
20	Main Street	General view during removal of deposit 028	N
21-23	Main Street	Culvert 046	S
24-25	Main Street	Culvert 046	N
26-28	Main Street	Mortar floor 047	N
29-30	Main Street	Mortar floor 048	NE
31-34	Main Street	West facing section through mortar floor 048	W
35-38	Main Street	East facing section through mortar floor 047	E
39-40	Main Street	Truncation by service	S
41-44	Main Street	Culvert 046 and mortar floor 047	S
45-46	Main Street	East facing section showing mortar floor 047 overlying infill layer 052	E
47-48	Main Street	North facing section showing natural deposit 054	N
49	Main Street	Mortar floor 047 truncated by bt duct	N
50	Main Street	Mortar floor 047 truncated by bt duct	W
51-52	Main Street	East wall of culvert 046	E
53-54	Main Street	Deposit 022	S

No	Area	Description	From
55-56	Main Street	East facing section after removal of box shoring	E
57-58	Main Street	General view of Main St trench between manholes 3 and 4	NE

Digital Film No 7

No	Area	Description	From
1	-	Registration shot	-
2-3	Main Street	Culvert 046 capstones removed to accommodate bt duct	W
4-5	Main Street	Culvert 046 capstones removed to accommodate bt duct	S
6-7	Main Street	North facing section manhole 4 trench prior to insertion of pile shoring	N
8-9	Main Street	East facing section manhole 4 trench prior to insertion of pile shoring	E
10-11	Main Street	Deposit 022 towards base of trench	NW
12-13	Main Street	Deposit 053 manhole 4 trench	SW
14-15	Main Street	General view during excavation manhole 4 trench	E
16-17	Main Street	Pottery from manhole 4 trench	S
18-19	Main Street	Natural clay 054 at the base of manhole 4 trench	E
20-21	Main Street	General view of pipe trench between manholes 4 and 5	ENE

Digital Film No 8

No	Area	Description	From
1	St John St	Registration shot	
2	St John St	Manhole at junction of St John St and Hall St	SW
3	St John St	Pre ex of trench	SE
4	St John St	Deposit 056	SE
5	St John St	Deposit 057	SE
6	St John St	Leather shoe	
7	St John St	Deposits 056-061	SE
8	St John St	Deposits 056-059	SE
9	St John St	Deposits 056-059	SE
10	St John St	Deposits 064	SE
11	St John St	Deposits 056-059 and 064	SE
12	St John St	Deposit 064 in location context	SE
13	St John St	Deposits 056-059 and 064	SE
14	St John St	Deposit 064	SE
15	St John St	Relict service pipe	SE
16	St John St	Deposits 056-060	NW
17	St John St	Deposits 056-060 in location context	W
18-19	St John St	Sea wall 065, cobbles 066 and deposit 067	NW
20-21	St John St	Sea wall 065, cobbles 066 and deposit 067	SE
22-23	St John St	Sea wall 065, cobbles 066 and deposit 067	ESE
24-27	St John St	Sea wall 065	NE
28-31	St John St	Sea wall 065	N
32-33	St John St	Sea wall 065	NE
34-35	St John St	General view during removal of sea wall 065	N
36-37	St John St	View of deposits either side of sea wall 065	SE
38-39	St John St	Natural sand south of sea wall 065	SE
40-41	St John St	Southern extent of cobbles 066	SW
42-43	St John St	Floor deposits 075-079 associated with blacksmiths workshop	SW
44-45	St John St	Cobbles 079 after removal of deposit 075	SW
46-47	St John St	General view of the St John St works	NE
48-49	St John St	Sandstone wall 080	W
50-55	St John St	Floor surfaces and occupation horizons 081-082 south of wall 080	W
56-57	St John St	General view of Shore St and St John St	W
58-59	St John St	Part of deposit 093 showing mortar floor with clay repair north of wall 080	SE

Appendix C: Drawing Register

No	Area	Description	Scale
1	Park Square	Plan of concrete features 003, 004, 005, and 006	1:20
2	Park Square	Plan of wall 009 and concrete floor 010	1:20
3	Lochend St	Plan of features in Lochend St trench	1:50
4	Lochend St	SW facing section of features in Lochend St trench	1:50
5	Main St	Plan of features in manhole 3 trench	1:50
6	Main St	North facing section of features in Manhole 3 trench	1:50
7	Main St	East facing section of features in manhole 3 trench	1:50
8	Main St	Plan of culvert 035 in manhole 3 trench	1:50
9	Lochend St	Plan of concrete foundation 5008 for wall 5000	1:20
10	Lochend St	Plan of brick structure 5009	1:20
11	Main St	Plan of wall 042	1:20
12	Main St	Plan of features in Main St trench between manholes 3 and 4	1:50
13	Main St	East facing section through features in Main St trench between manholes 3 and 4	1:50
14	St John St	Plan of features towards the south end of the St John St trench	01:20:00
15	St John St	South-east facing section through deposits and sea wall 065	01:50:00
16	St John St`	North-west facing section through wall 080 and associated deposits	01:50:00

Appendix D: Finds Register

Sfno.	Area	Context No.	No. of Pieces	Material	Description	Additional Notes	Box
1	Main Street	022	1	Ceramic	Glazed	1 bodysherd	2
2	Main Street	025	1	Ceramic	Glazed	1 basesherd	2
3	Main Street	022	4	Ceramic	Glazed with blue decoration	2 rimsherds, 2 bodysherds	2
4	Main Street	022	2	Bone	Most likely animal	Appears sawed	4
5	Main Street	022	1	Metal	Square Nail	Fe?	3
6	Main Street	022	1	Leather	Fragment		fridge
7	Main Street	022	51	Ceramic	Mostly glazed. 12 unglazed	Glazed: 21 bodysherds, 11 base sherds (1 of is complete base), 7 rimsherds (1 of is complete bottle/jug finial, 1 of appears to be spout frag, And one of with complete handle) Unglazed: 6 body, 1 base, 5 rim	2
8	Main Street	025	15	Ceramic	Mostly glazed. 2 unglazed.	1 handle, 6 rimsherds, 2 basesherds, 4 bodysherds (2 of are unglazed)	2
9	Main Street	022	30	Bone	Most likely animal	1 of these is a tooth. Many bones appear to have been sawed	5
10	Main Street	022	1	Glass	Most likely animal	Possibly from bottle base	5
11	Main Street	022	3	Glass	Most likely animal	1 base frag, 1 body frag, 1 neck/finial frag. Poss all from same bottle?	5
12	Main Street	022	7	Ceramic	Most likely animal	1 rimsherd, 6 bodysherds	2
13	Main Street	022	3	Leather	Most likely animal	1 child's shoe, 2 other frags	fridge
14	Main Street	027	5	Ceramic	Most likely animal	4 bodysherds, 1 rimsherd	2
15	Main Street	031	3	Ceramic	Most likely animal	2 bodysherds, 1 rimsherd	2
16	Main St. Manhole 3	022	12	Ceramic	Most likely animal	9 bodysherds, 1 basesherd, 2 rimsherds (1 of is unglazed)	2
17	Main St. Manhole 3	022	2	Leather	Most likely animal	Larger sized fragments	fridge
18	Main St. Manhole 3	022	13	Glass	Most likely animal	Various bottle frags. 1 frag is a thinner, flat, iridescent/milky glass	5

Sfno.	Area	Context No.	No. of Pieces	Material	Description	Additional Notes	Box
19	Main St. Manhole 3	022	44	Bone	Most likely animal	< 10 are fish bone frags	4
20	Main St. Manhole 3	022	40	Ceramic	Most likely animal	22 bodysherds (1 of is unglazed), 7 basesherds, 9 rimsherds (1 of Unglazed)	2
21	Main St. S. of Wall (042)	022	14	Ceramic	see notes	11 bodysherds, 1 handle, 2 rimsherds (1 of unglazed)	2
22	Main Street	022	19	Bone	Most likely animal		4
23	Main Street	022	2	Glass	fragments		5
24	Main Street	052	2	Ceramic	see notes	1 rimsherd glazed inside only, 1 bodysherd glazed both sides	2
25	Main Street	052	1	Bone	Most likely animal		4
26	Main St. S. of Wall (042)	022	61	Bone	Most likely animal	Incl bag of crumbs containing ceramic, glass, & shell	4
27	Main St. S. of Wall (042)	022	131	Ceramic	see notes	25 rimsherds, 5 handles, 4 basesherds, 85 bodysherds Many decorative patterns match <033>. Incl bag of crumbs.	1
28	Main St. S. of Wall (042)	022	30	Glass	see notes	13 base frags, 11 body frags, 6 necks with finials. Incl bag of crumbs	5
29	Main St. S. of Wall (042)	022	15 approx	Leather	see notes	Numerous shoe frags. Many soles. (did not want to disturb for full count at this time)	fridge
30	Main St. S. of Wall (042)	022	5	Building Material			3
31	Main St. Manhole 4	022	7	Leather	see notes	All appear to be shoe frags. Some more obvious than others.	fridge
32	Main St. Manhole 4	022	11	Glass	see notes	9 base frags, 2 body frags, Incl bag of crumbs containing shell	5
33	Main St. Manhole 4	022	70	Ceramic	see notes	4 basesherds, 2 handles, 3 bodysherds with handle attachments 42 bodysherds. Many decorative patterns match <027>	2
34	Main St. Manhole 4	022	35	Bone	Most likely animal	Some bones appear to have cut marks. Incl bag of crumbs cont. shell	4
35	Main St. Manhole 4	022	4	Building Material			3
36	Manhome 4-5 Pipe Tr.	022	20	Glass	see notes	8 basesherds; 1 rimsherd+ neck; 11 bodysherds. Incl. A bag of crumbs.	5
37	Manhome 4-5 Pipe Tr.	022	44	Ceramic	multiple sherds	different vessels represented	1
38	Manhome 4-5 Pipe Tr.	022	10	Bone	Most likely animal	Incl bag of crumbs.	5
39	St. John Street	062	1	Ceramic	glazed vessel rim	18-19th C ?	
40	St. John Street	058	1	Clay	whole pipe		
41	St. John Street	059	64	Ceramic	glazed 18-19th century sherd		
42	St. John Street	059	4	Glass	Clear vessel sherd, base and body	18-19th C ?	
43	St. John Street	059	8	Organic	shell		
44	St. John Street	064	1	Glass	clear vessel body sherd	18-19th C ?	
45	St. John Street	064	1	Organic	leather strap		
46	St. John Street	064	5	Organic	cockle shells		
47	St. John Street	064	18	Ceramic	glazed 18-19th century sherd		

Sfno.	Area	Context No.	No. of Pieces	Material	Description	Additional Notes	Box
48	St. John Street	059	1	Bone	fish bone, unknown species		
49	St. John Street	059	19	Ceramic	glazed 18-19th century sherd		
50	St. John Street	Unstrat	1	Glass	"Hauthaway's Peerless Glass"	18-19th C ?	
51	St. John Street	058	3	Organic	Leather shoes		
52	St. John Street	058	2	Ceramic	Glazed 19th century sherd		
53	St. John Street	061	1	Bone	Animal unidentified		
54	St. John Street	061	30	Ceramic	Glazed 19th century sherd		
55	St. John Street	061	8	Glass	Base, body and neck sherds	18-19th C ?	
56	St. John Street	061	17	Ceramic	Glazed 18-19th century sherd		
57	St. John Street	061	7	Glass	Bottle sherds and lids	18-19th C ?	
58	St. John Street	076	1	Ceramic	Red-brick fragment		
59	St. John Street	075	1	Metal	Iron slag?		
60	St. John Street	075	1	Bone	unidentified bone		
61	Main St. S. of Wall (042)	022	1	Leather		Small strip	fridge
62	Main St. S. of Wall (042)	022	1	Plastic	plastic tubing	Appears to be like a tube for shielding larger diameter cables	3
63	Main St. S. of Wall (042)	022	1	Glass		Green, transparent, flat. Perhaps window glass?	5
64	Main St. Manhole 4	022	1	Ceramic		Lid fragment	2
65	Main Street	022	1	Ceramic		Bodysherd	2
66	Main Street	022	1	Glass		Possibly from bottle ?	5
67	Main Street	025	4	Bone	Most likely animal		4
68	Main St. S. of Wall (042)	022	2	Clay		clay pipe fragments	3
69	Main St. S. of Wall (042)	022	1	Glass		Possibly from bottle ?	5
70	Main Street	022	16	Shell	marine shells		3
71	Main Street	022	5	Wood		Stems and fragments of larger sticks found with bones from <009>	3
72	Main St. Manhole 4	022	1	Clay		Clay pipe	3
73	Main Street	022	1	Glass		Possibly from bottle ? 18-19th C ?	5

Appendix E: Sample Register

No	Description	Volume	Trench
1	Deposit 022	16	Main St
2	Deposit 027	4	Main St
3	Deposit 022 south of wall 042	4	Main St
4	Deposit 049	2	Main St
5	Deposit 022	3	Main St
6	Deposit 059	10	St John St
7	Deposit 075	10	St John St
8	Deposit 089	3	St John St

No	Description	Volume	Trench
9	Deposit 091	3	St John St
10	Deposit 083	0.5	St John St
11	Deposit 087	3	St John St

Appendix F: Discovery And Excavation Scotland Entry

LOCAL AUTHORITY:	Argyll and Bute
PROJECT TITLE/SITE NAME:	Campbeltown Sewer Flood Alleviation Works
PROJECT CODE:	3255
PARISH:	Campbeltown
NAME OF CONTRIBUTOR(S):	Alan Hunter Blair
NAME OF ORGANISATION:	GUARD
TYPE(S) OF PROJECT:	Watching Brief
NMRS NO(S):	
SITE/MONUMENT TYPE(S):	---
SIGNIFICANT FINDS:	---
NGR (2 letters, 6 figures)	NR 71865 20845
START DATE (this season)	29 November 2010
END DATE (this season)	9 May 2011
PREVIOUS WORK (incl. <i>DES</i> ref.)	
MAIN (NARRATIVE) DESCRIPTION: (May include information from other fields)	An archaeological watching brief was carried out by GUARD LTD. on behalf of Black and Veatch during pipe-laying works in Campbeltown along three sections of sewer upgrade. This was undertaken in accordance with Terms of Reference prepared by West of Scotland Archaeology Service (WoSAS). Features of archaeological interest were identified towards both ends of the study-area. To the south-east four walls, one relating to the Old Quay and two to an earlier shoreline were recorded along with eighteenth/nineteenth century building remains. A well, walls and other features associated with the nineteenth-century Kinloch Distillery were also observed to the north-west.
PROPOSED FUTURE WORK:	
SPONSOR OR FUNDING BODY:	Black and Veatch
CAPTION(S) FOR ILLUSTRS:	-
ADDRESS OF MAIN CONTRIBUTOR:	GUARD Archaeology Ltd. 52 Elderspark Workspace, 100 Elderspark Street, Glasgow G51 3TR
EMAIL ADDRESS:	info@guard-archaeology.co.uk
ARCHIVE LOCATION (intended/deposited)	Archive to be deposited in NMRS.

GUARD Archaeology Limited
52 Elderpark Workspace
100 Elderpark Street
Glasgow
G51 3TR

Tel: 0141 445 8800

Fax: 0141 445 3222

email: info@guard-archaeology.co.uk



www.guard-archaeology.co.uk